

RTV-X Hydraulic Conversion Kit Installation Instructions

- 1) Align the 2-port bracket with the vehicle using the two provided bolts. Install on the passenger's side of the vehicle frame, even with the top of the factory rear plate, with the bolts extending toward the rear of the vehicle (see Figure 1).
- 2) Tighten both bolts fully using 2 wrenches.
- 3) Raise the dump bed fully, making sure to set the dump bed safety lock in place (see Figure 2). Then, place the dump bed in float using the dump bed lever. This is done by pushing the dump bed lever all the way down – it should lock in position.
- 4) Loosen the hydraulic hose going to port B on the Transmission - it should be marked with yellow tape (see Figure 3). Remove the 90 degree fitting from this end of the hydraulic hose.
- 5) Take the end of the yellow hose where the 90 degree fitting was removed and attach it back to the same port on the transmission.
- 6) Remove the hydraulic hoses attaching to the 90 degree fittings on the dump bed cylinder.
- 7) Attach the yellow hose to the bottom port of the 2-port bracket installed in Step 2. Attach the white hydraulic hose to the top port of the 2-port bracket.
- 8) Install the provided hydraulic lines onto the dump bed cylinder (see Figure 4). The white hydraulic hose (30" long) goes to the top of the cylinder; the yellow hose (34" long) goes to the bottom of the cylinder.
- 9) **Make sure that all fittings and bolts are fully tightened prior to using the RTV-X Hydraulic Conversion Kit. For JIC Fittings, (see Figure 5) hand tighten until it touches, then use a wrench to tighten another 30 degrees. JIC FITTINGS CAN BE OVERTIGHTENED!**

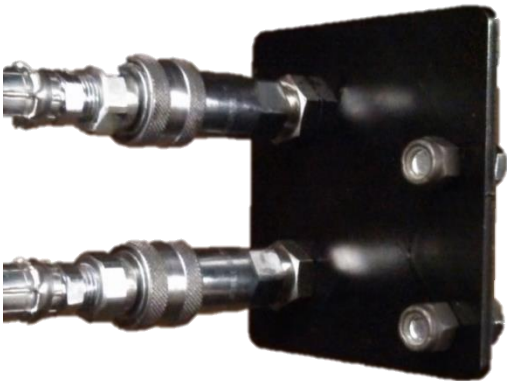


Figure 1

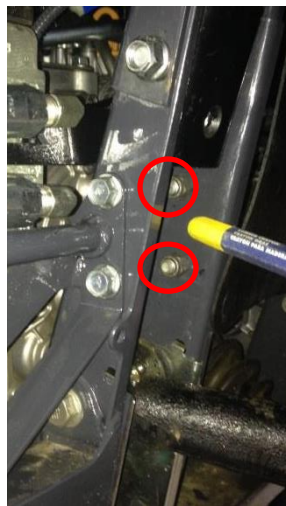


Figure 4

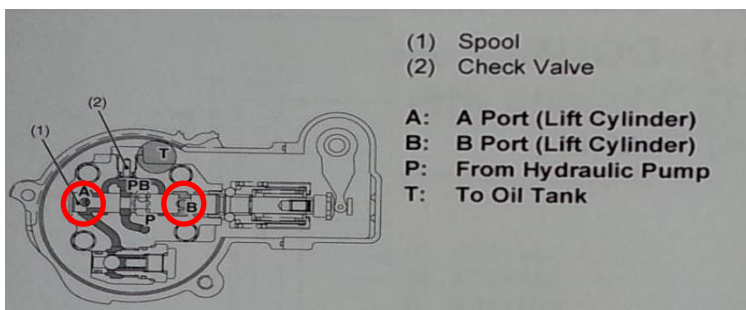


Figure 3



Figure 5

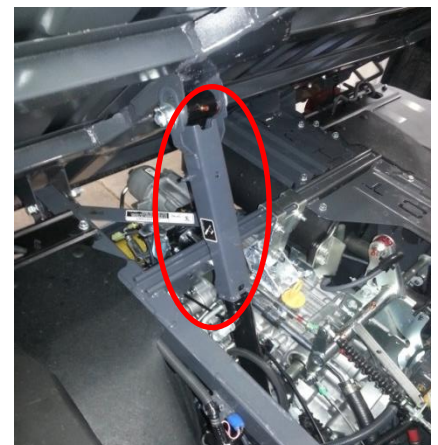


Figure 2