

ADHIKAANSH ACADEMY (IITJEE NEET IX X XI XII)

RUN BY:

DEEPAK SAINI SIR

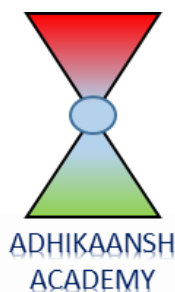
B.TECH, M.TECH (N.S.I.T. DELHI UNIVERSITY)

Ex. Faculty of

Resonance Kota, Career Point Kota

Aakash Institute Mumbai

BIOLOGY NOTES (CLASS 11TH)



FOR MORE FREE QUESTION
BANKS AND SAMPLE PAPER
WT'S UP ON : 7665186856

A Best Faculty Group in Meerut....

ADHIKAANSH  **ACADEMY**
IITJEE NEET IX X XI XII

सही समय और सही दिशा में कड़ी मेहनत, तो सफलता पक्की!

So why
to wait...



DIRECTOR
DEEPAK SAINI (DSA SIR)
B.TECH, M.TECH
NSIT DELHI UNIVERSITY

और **Class 11th** से ही शुरू करें,
Board के साथ-साथ,
NEET और **IITJEE** की तैयारी

Special Classes For Students Studying in std. 9th & 10th.

EX. FACULTY OF RESONANCE KOTA, AAKASH INSTITUTE MUMBAI
225/5, 1ST FLOOR, PANCHSHEEL COLONY, BEHIND PINNACLE TOWER, GARH ROAD, MEERUT. ☎ 8057870069
www.adhikanshiitjeemedical.com | adhikanshiitjeemedical@gmail.com

Take Dummy Admission
in Class 11th & Prepare For..

IITJEE & NEET

For Free Counselling &
Career Guidance contact on:

7665186856

CBSE Quick Revision Notes (Class-11 Biology)
CHAPTER-08 CELL: STRUCTURE AND FUNCTIONS

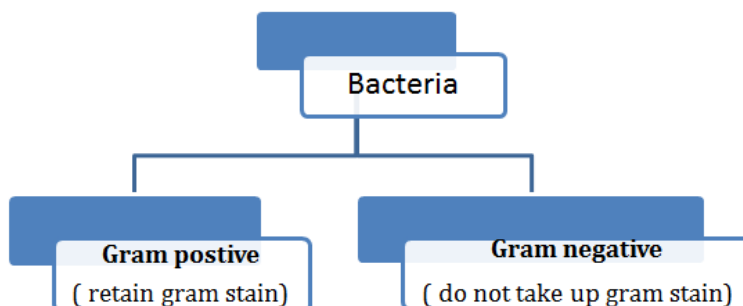
- Study of form, structure, and composition of cell is called **cytology**.
- Cell is the structural and functional unit of life. In unicellular organism (amoeba, paramecium, yeast bacteria) , single cell perform the all essential functions of life.
- In multicellular organism, different kinds of tissues perform different function and have division of labour.
- Melthias Schleiden and Theodore Schwann(1938) proposed the cell theory-
 - a. All living organisms are composed of cells and products of cells.
 - b. All cells arise from pre-existing cells.

Prokaryotic cells	
(i)	(i)
(ii) Cells are smaller in size.	(ii) Cells are larger in size.
(iii) Single chromosome is present.	(iii) More than one chromosome is present.
(iv) Membrane bound organelles are absent.	(iv) Membrane bound organelles are present.

Shape and size of cells varies greatly according to their position and function. Mycoplasma is the smallest cell and largest isolated cell is the ostrich egg. The shape of cell may be cuboid, columnar, polygonal, thread like or irregular.

Prokaryotic Cells

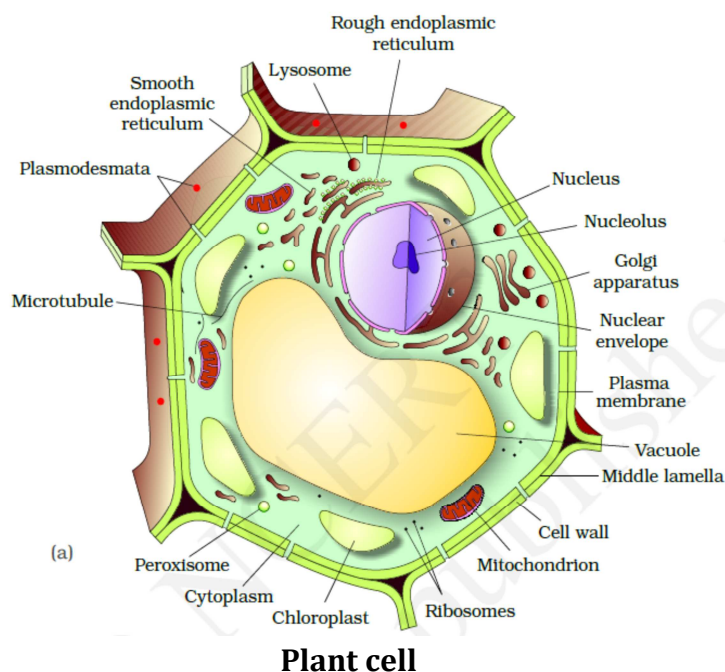
- Prokaryotic cells are represented by Bacteria, Blue green algae, Mycoplasma and PPLO. They multiply rapidly and vary in size greatly.
- Bacterial cells may be Bacillus (rod shaped), Coccus (spherical), Vibrio (comma-shaped) and Spirillum (spiral).
- All prokaryotic cells have cell wall surrounding the cell membrane except in Mycoplasma. Genetic material is naked.
- The plasmid DNA, in some bacteria provides some special features like resistance to antibiotic.
- Cell organelles like Mitochondria, Golgi bodies etc. are absent in prokaryotes. A specialized differentiated cell membrane called Mesosome is the characteristic of prokaryotes.
- In bacterial cell a chemically complex cell envelope is present, which consist of three layers. The outermost is Glycocalyx, middle one cell wall and inner innermost is the cell membrane.

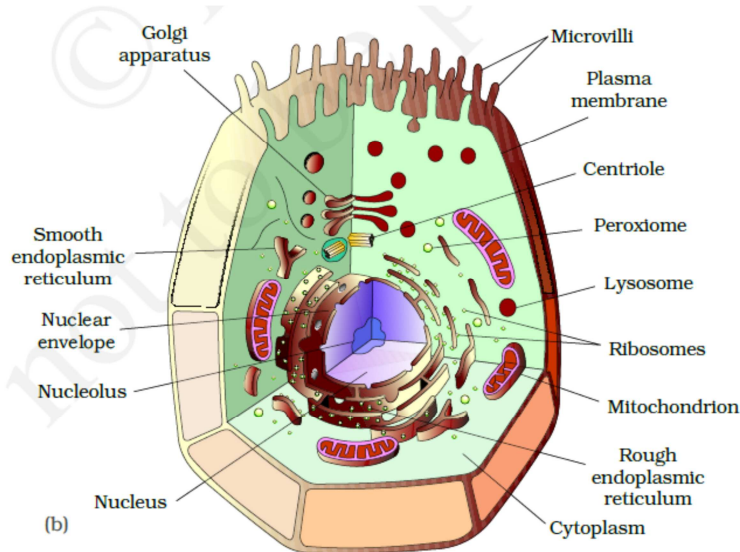


- Glycocalyx may be as loose sheath in some bacteria called **slime layer**. In some other bacteria Glycocalyx may be thick and tough called **capsule**.
- Plasma membrane is semi-permeable having mesosome in form of vesicles, tubules and lamellae. They help in cell wall formation, DNA replication and distribution to daughter cells.
- Motile bacterial cell contain flagella, which is composed of filament, hook and basal body. Pili and fimbriae are the other surface structure that help the bacteria in attach with host and other substance.
- In prokaryotes, ribosome are attached with cell membrane having two sub-units – 50S and 30S to form together 70S prokaryotic ribosomes.
- Ribosomes are site of protein synthesis. Ribosomes attached with mRNA to form a chain called polyribosomes.
- Reserved materials in prokaryotic cells are present in cytoplasm as cell inclusion bodies, which may contain phosphate, granules, glycogen granules etc.
- Gas vacuoles are found in blue green algae and purple and green photosynthetic bacteria.

Eukaryotic Cell

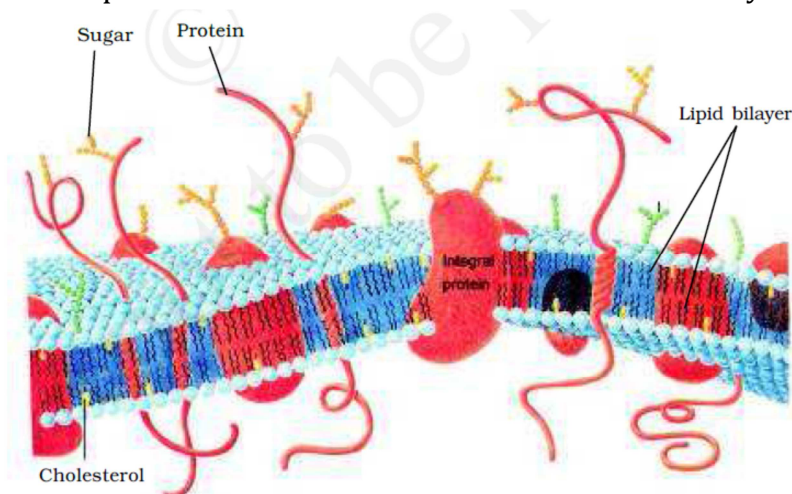
- ❖ Eukaryotic cells are present in Protista, plants, Animals and Fungi. Cytoplasm is divided into compartments due to presence of membrane bounded organelles.
- ❖ The cells contain well organized nucleus with nuclear membrane. The genetic materials are arranged in chromosomes.
- ❖ Plants cells differ in having cell wall, plastids and large central vacuole as compared to animal cells. Animal cells have centrioles, which are absent in plant cells.





Animal cell

- ❖ **Cell membrane** is composed of lipids and that are arranged in bilayer. A lipid component is mainly composed on phosphoglycerides. Later it was found that protein is also present in cell membrane. Ratio of protein and lipids varies in different cells.
- ❖ Membrane protein may be integral or peripheral. Integral protein remains buried in membrane but peripheral protein lies of surface.
- ❖ Singer and Nicholson (1972) proposed **fluid mosaic model**. According to this model the quasi-fluid nature of lipid enables lateral movement of within the bilayer of lipids.



- ❖ The main function of plasma membrane is the transport of molecules across it.

	Passive Transport
a. The transport involves an expenditure of energy by the cells.	a. The cells do not spend energy in passive transport.
b. It occurs against the concentration gradient.	b. It transport is always along the concentration gradient.
c. It is a rapid process.	c. It is comparatively slow process.

- ❖ The movement of water from higher concentration to lower concentration by diffusion is called **osmosis**.

- ❖ Cell wall is present in plant cells and fungi. Algae have cell wall made up of cellulose, galactans and minerals like calcium carbonate. In other plants it consists of cellulose, hemicellulose, pectin and proteins.
- ❖ Primary cell wall of young plant is capable of growth, which diminishes in mature cells. Secondary cell wall is formed on inner side of the cells.
- ❖ Plasmodesmata connect the cytoplasm of neighboring cells.
- ❖ Endomembrane system of cell includes endoplasmic reticulum, golgi complex, lysosomes and vacuoles.

❖ **Endoplasmic Reticulum** are the tubular scattered structure scattered in the cytoplasm.

(i) Rough endoplasmic reticulum bears ribosomes on its surface. RER is involved in protein synthesis and secretion.

(ii) Smooth endoplasmic reticulum does not bear ribosomes on its surface. SER is involved in lipid synthesis and steroidal hormones.

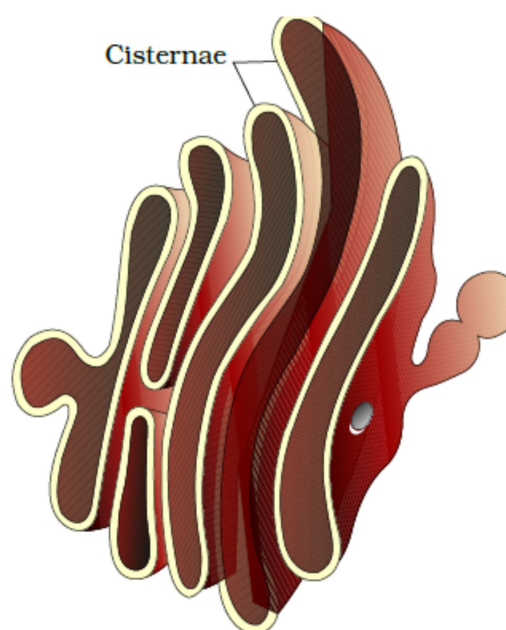
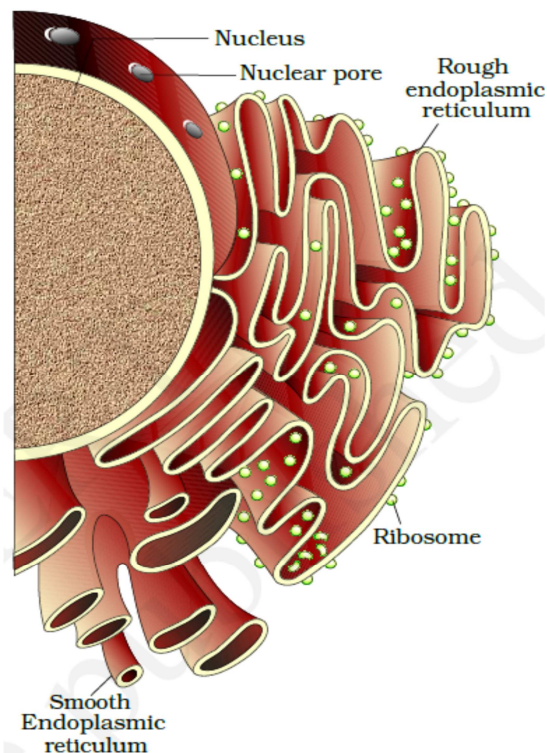
❖ **Golgi apparatus** was first observed by Camillo Golgi in 1898 near nucleus. They consist of many flat, disc-shaped sacs or cisternae stacked parallel to each other.

❖ Golgi apparatus performs the function of packaging of materials and its transportation. A number of proteins synthesized by ribosomes are modified in cisternae of golgi apparatus. Golgi apparatus is the site for synthesis of glycoproteins and glycolipids.

❖ Lysosomes are membrane bound vesicular structure formed by process of packaging in the Golgi apparatus. They are rich in hydrolytic enzymes- lipase, protease, carbohydrases active at acidic pH. These enzymes are capable of digesting carbohydrates, proteins, lipids and nucleic acids.

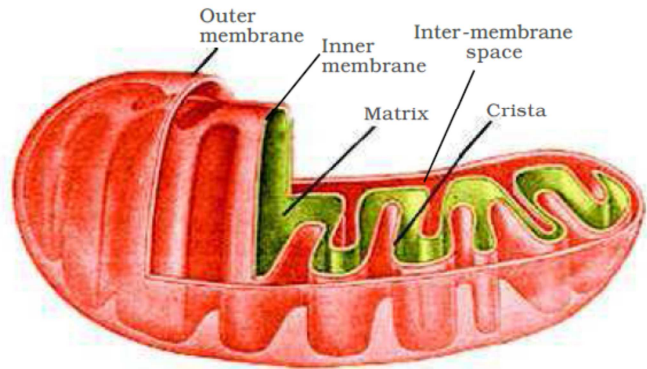
❖ **Vacuoles** are membrane bound space found in cytoplasm water, sap and excretory product bounded by single membrane. They form contractile vacuole and food vacuole in many organisms.

❖ **Mitochondria** double membrane bound structure with the outer membrane and inner membrane dividing its lumen in two compartments. The inner

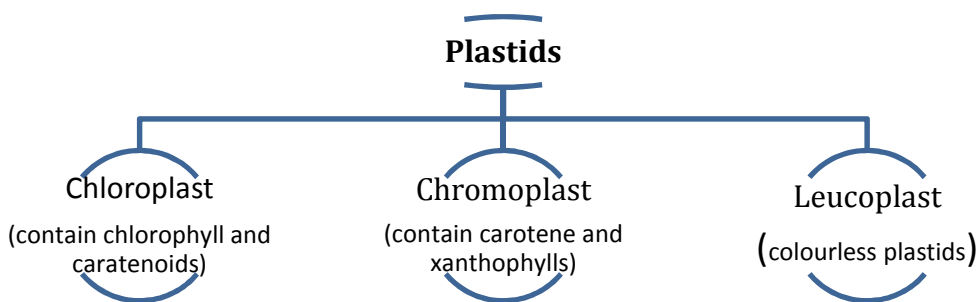


membrane forms a number of infoldings called **cristae** towards the matrix.

- ❖ Two membranes have own specific enzyme.
- ❖ Mitochondria are sites for aerobic respiration. They produce cellular energy in form of ATP so, they are called power house of the cells. The matrix of mitochondria also contain circular DNA molecules, a few RNA molecules, ribosomes and components of protein synthesis.

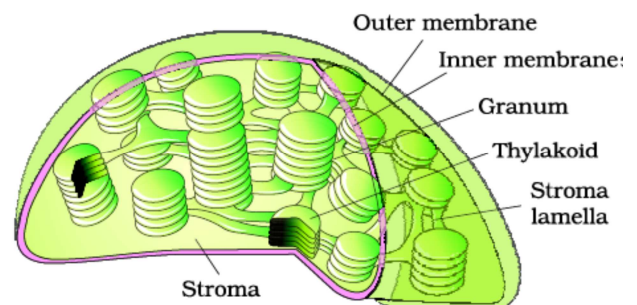


- ❖ **Plastids** are found only in plant cells and Eugleoids having specific pigments to provide colours to plants parts.



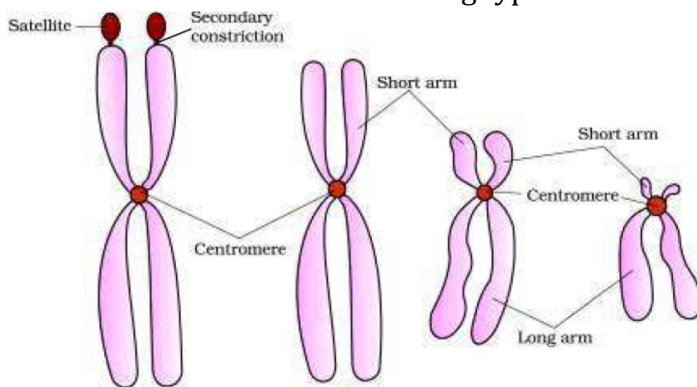
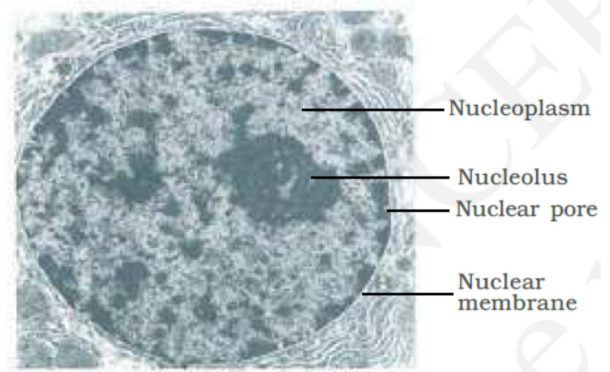
- ❖ Chloroplast contains chlorophyll that traps solar energy for photosynthesis. Chromoplast provides yellow, orange and red colours to different parts of plants.
- ❖ Leucoplasts are colourless plastids that store food, amyloplasts (carbohydrates), elaioplasts (oils) and aleuoplasts (proteins).
- ❖ Chloroplasts are double membrane structure. The space limited by inner membrane is called stroma. Thylakoids are present in stroma as stacks like the piles of coins called grana.

- ❖ Stroma contain enzyme for synthesis of protein and carbohydrates. Double strand circular DNA and ribosomes are also present in stroma.



- ❖ Ribosomes are granular structure of 80S.
- ❖ Centrosomes is an organelles containing two cylindrical structures called centrioles. Each centrioles is made up of 9 fibrils of tubulin protein. Central parts of centriole is called hub and peripheral fibrils are called spokes .
- ❖ **Nucleus** has highly extended, elaborate nucleoprotein fibres called chromatin, nuclear matrix and nucleoli. The outer membrane is continuous with endoplasmic reticulum and bears ribosomes.

- ❖ The chromatin materials change into chromosome during active cell division consists of DNA and histone proteins.
- ❖ Every chromosome has a primary constriction or the centromere, on the sides of which disc shaped kinetochores are present.
- ❖ On the basis of position of centromere chromosomes are of following types-



Metacentric Sub-metacentric Acrocentric Telocentric.

- ❖ Some chromosomes have non-staining secondary contraction at certain location. This give a small fragment called satellite.

**FOR MORE FREE QUESTION
BANKS AND SAMPLE PAPER
WT'S UP ON : 7665186856**

A Best Faculty Group in Meerut....

ADHIKAANSH ACADEMY
IITJEE NEET IX X XI XII

सही समय और सही दिशा में कड़ी मेहनत, तो सफलता पक्की!

*So why
to wait...*



DIRECTOR
DEEPAK SAINI (DSA SIR)
B.TECH, M.TECH
NSIT DELHI UNIVERSITY

**और Class 11th से ही शुरू करें,
Board के साथ-साथ,
NEET और IITJEE की तैयारी**

Special Classes For Students Studying in std. 9th & 10th.

EX. FACULTY OF RESONANCE KOTA, AAKASH INSTITUTE MUMBAI
225/5, 1ST FLOOR, PANCHSHEEL COLONY, BEHIND PINNACLE TOWER, GARH ROAD, MEERUT. ☎ 8057870069
www.adhikanshiitjeemedical.com | adhikanshiitjeemedical@gmail.com

**Take Dummy Admission
in Class 11th & Prepare For..**

IITJEE & NEET

**For Free Counselling &
Career Guidance contact on:**

7665186856