

Science (086)
Class X
Sample Question Paper 2022-23

Max. Marks: 80

Time Allowed: 3 hours

General Instructions:

- i. This question paper consists of 39 questions in 5 sections.
- ii. All questions are compulsory. However, an internal choice is provided in some questions. A student is expected to attempt only one of these questions.
- iii. **Section A** consists of 20 objective type questions carrying 1 mark each.
- iv. **Section B** consists of 6 Very Short questions carrying 02 marks each. Answers to these questions should in the range of 30 to 50 words.
- v. **Section C** consists of 7 Short Answer type questions carrying 03 marks each. Answers to these questions should in the range of 50 to 80 words
- vi. **Section D** consists of 3 Long Answer type questions carrying 05 marks each. Answer to these questions should be in the range of 80 to 120 words.
- vii. **Section E** consists of 3 source-based/case-based units of assessment of 04 marks each with sub-parts.

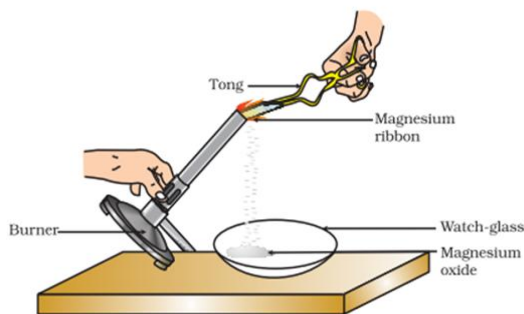
SECTION - A

Select and write one most appropriate option out of the four options given for each of the questions 1 – 20

Q. No	Questions	Marks
1	<p>The change in colour of the moist litmus paper in the given set up is due to</p> <div style="text-align: center;"> </div> <ol style="list-style-type: none"> i. presence of acid ii. presence of base iii. presence of H⁺(aq) in the solution iv. presence of Litmus which acts as an indicator <ol style="list-style-type: none"> (a) i and ii (b) Only ii (c) Only iii (d) Only iv. 	1
2	<p>In the redox reaction</p> $\text{MnO}_2 + 4\text{HCl} \rightarrow \text{MnCl}_2 + 2\text{H}_2\text{O} + \text{Cl}_2$ <ol style="list-style-type: none"> (a) MnO₂ is reduced to MnCl₂& HCl is oxidized to H₂O (b) MnO₂ is reduced to MnCl₂& HCl is oxidized to Cl₂ 	1

- (c) MnO_2 is oxidized to MnCl_2 & HCl is reduced to Cl_2
 (d) MnO_2 is oxidized to MnCl_2 & HCl is reduced to H_2O

3



Which of the following is the correct observation of the reaction shown in the above set up?

- (a) Brown powder of Magnesium oxide is formed.
 (b) Colourless gas which turns lime water milky is evolved.
 (c) Magnesium ribbon burns with brilliant white light.
 (d) Reddish brown gas with a smell of burning Sulphur has evolved.

1

4

With the reference to four gases CO_2 , CO , Cl_2 and O_2 , which one of the options in the table is correct?

Option	Acidic oxide	Used in treatment of water	Product of respiration	Product of incomplete combustion
(a)	CO	Cl_2	O_2	CO
(b)	CO_2	Cl_2	CO_2	CO
(c)	CO_2	O_2	O_2	CO_2
(d)	CO	O_2	CO_2	CO_2

1

5

On placing a copper coin in a test tube containing green ferrous sulphate solution, it will be observed that the ferrous sulphate solution

- (a) turns blue, and a grey substance is deposited on the copper coin.
 (b) turns colourless and a grey substance is deposited on the copper coin.
 (c) turns colourless and a reddish-brown substance is deposited on the copper coin.
 (d) remains green with no change in the copper coin.

1

6

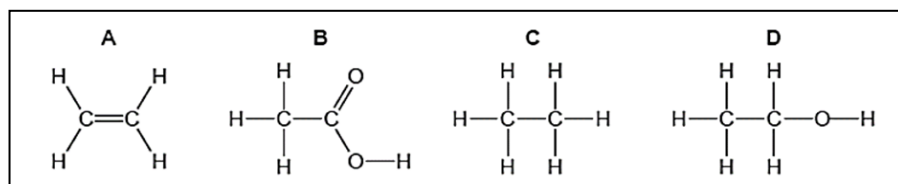
Anita added a drop each of diluted acetic acid and diluted hydrochloric acid on pH paper and compared the colors. Which of the following is the correct conclusion?

- (a) pH of acetic acid is more than that of hydrochloric acid.
 (b) pH of acetic acid is less than that of hydrochloric acid.
 (c) Acetic acid dissociates completely in aqueous solution.
 (d) Acetic acid is a strong acid

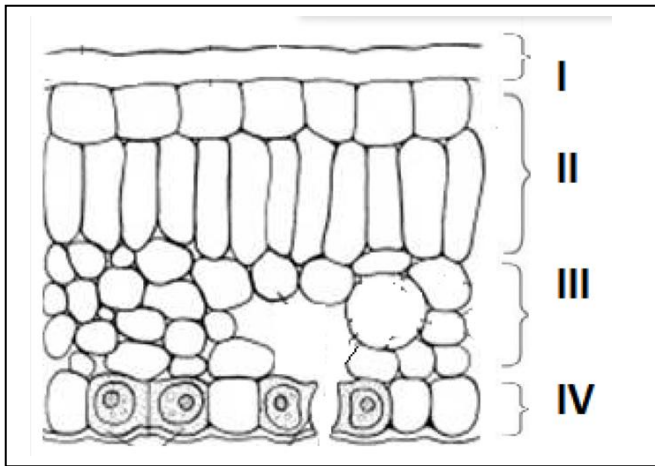
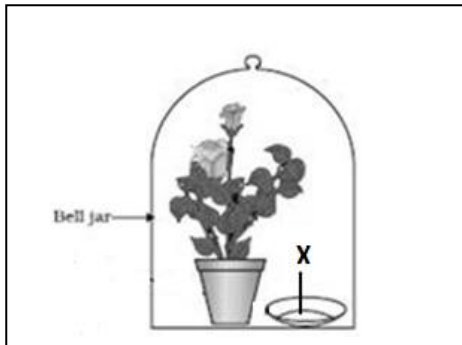
1

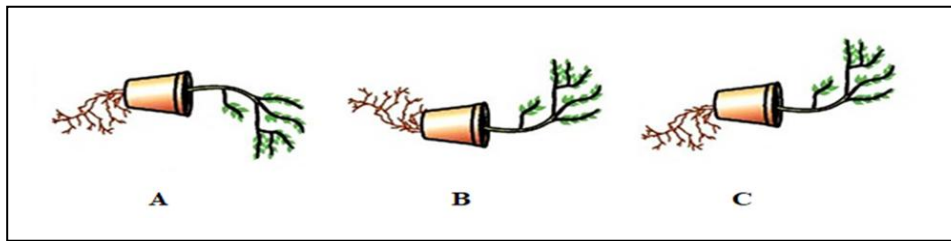
7

The formulae of four organic compounds are shown below. Choose the correct option



1

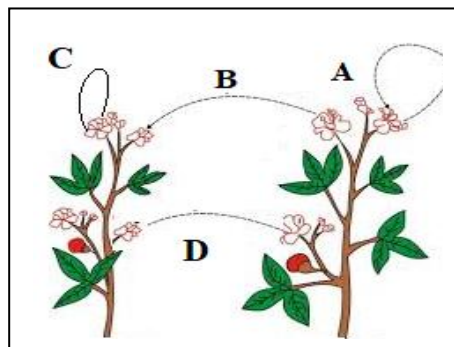
	<p>(a) A and B are unsaturated hydrocarbons</p> <p>(b) C and D are saturated hydrocarbons</p> <p>(c) Addition of hydrogen in presence of catalyst changes A to C</p> <p>(d) Addition of potassium permanganate changes B to D</p>	
8	<p>In the given transverse section of the leaf identify the layer of cells where maximum photosynthesis occurs.</p>  <p>(a) I, II</p> <p>(b) II, III</p> <p>(c) III, IV</p> <p>(d) I, IV</p>	1
9	<p>Observe the experimental setup shown below. Name the chemical indicated as 'X' that can absorb the gas which is evolved as a byproduct of respiration.</p>  <p>(a) NaOH</p> <p>(b) KOH</p> <p>(c) Ca (OH)₂</p> <p>(d) K₂CO₃</p>	1
10	<p>If a tall pea plant is crossed with a pure dwarf pea plant then, what percentage of F1 and F2 generation respectively will be tall?</p> <p>(a) 25%, 25%</p> <p>(b) 50%, 50%</p> <p>(c) 75%, 100%</p> <p>(d) 100%, 75%</p>	1
11	<p>Observe the three figures given below. Which of the following depicts tropic movements appropriately?</p>	1



- (a) B and C
- (b) A and C
- (c) B only
- (d) C only

12

The diagram shown below depicts pollination. Choose the options that will show a maximum variation in the offspring.



- (a) A, B and C
- (b) B and D
- (c) B, C and D
- (d) A and C

1

13

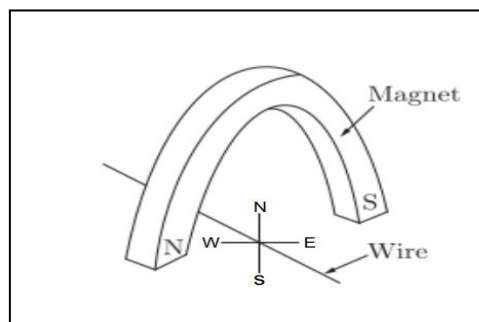
A complete circuit is left on for several minutes, causing the connecting copper wire to become hot. As the temperature of the wire increases, the electrical resistance of the wire

- (a) decreases.
- (b) remains the same.
- (c) increases.
- (d) increases for some time and then decreases .

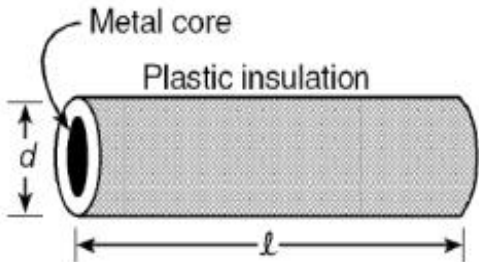
1

14

A copper wire is held between the poles of a magnet.

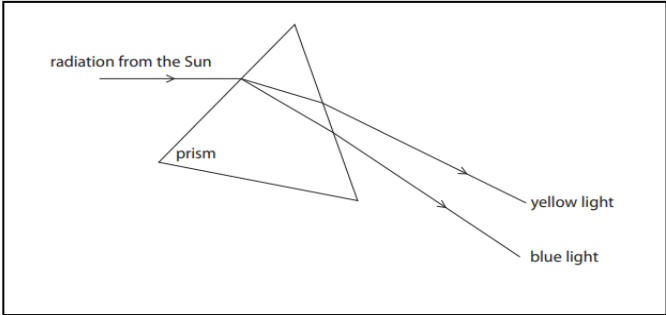


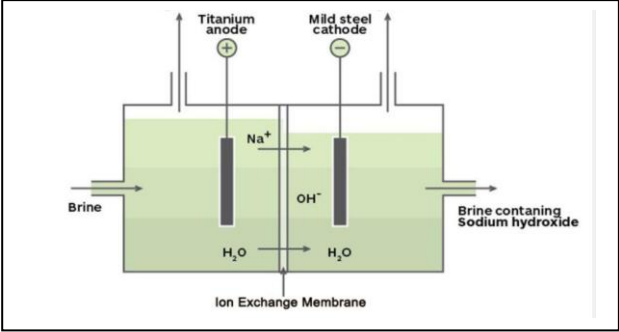
1

	The current in the wire can be reversed. The pole of the magnet can also be changed over. In how many of the four directions shown can the force act on the wire? (a) 1 (b) 2 (c) 3 (d) 4	
15	 <p>Plastic insulation surrounds a wire having diameter d and length l as shown above. A decrease in the resistance of the wire would be produced by an increase in the</p> <p>(a) length l of the wire (b) diameter d of the wire (c) temperature of the wire (d) thickness of the plastic insulation</p>	1
16	Which of the following pattern correctly describes the magnetic field around a long straight wire carrying current? (a) straight lines perpendicular to the wire. (b) straight lines parallel to the wire. (c) radial lines originating from the wire. (d) concentric circles centred around the wire.	1
<p>Q. no 17 to 20 are Assertion - Reasoning based questions. These consist of two statements – Assertion (A) and Reason (R). Answer these questions selecting the appropriate option given below: (a) Both A and R are true and R is the correct explanation of A (b) Both A and R are true and R is not the correct explanation of A (c) A is true but R is false (d) A is False but R is true</p>		
17	Assertion: Silver bromide decomposition is used in black and white photography. Reason: Light provides energy for this exothermic reaction.	1
18	Assertion: Height in pea plants is controlled by efficiency of enzymes and is thus genetically controlled. Reason: Cellular DNA is the information source for making proteins in the cell.	1
19	Assertion: Amphibians can tolerate mixing of oxygenated and deoxygenated blood. Reason: Amphibians are animals with two chambered heart	1
20	Assertion: On freely suspending a current – carrying solenoid, it comes to rest in Geographical N-S direction. Reason : One end of current carrying straight solenoid behaves as a North pole and the other end as a South pole, just like a bar magnet.	1

SECTION – B

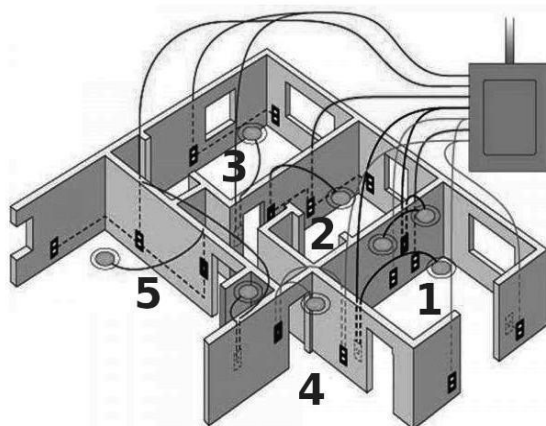
Q. no. 21 to 26 are very short answer questions.

21	<p>A clear solution of slaked lime is made by dissolving Ca(OH)_2 in an excess of water. This solution is left exposed to air. The solution slowly goes milky as a faint white precipitate forms. Explain why a faint white precipitate forms, support your response with the help of a chemical equation.</p> <p style="text-align: center;">OR</p> <p>Keerti added dilute Hydrochloric acid to four metals and recorded her observations as shown in the table given below:</p> <table border="1" data-bbox="516 489 1037 890"><thead><tr><th>Metal</th><th>Gas Evolved</th></tr></thead><tbody><tr><td>Copper</td><td>Yes</td></tr><tr><td>Iron</td><td>Yes</td></tr><tr><td>Magnesium</td><td>No</td></tr><tr><td>Zinc</td><td>Yes</td></tr></tbody></table> <p>Select the correct observation(s) and give chemical equation(s) of the reaction involved.</p>	Metal	Gas Evolved	Copper	Yes	Iron	Yes	Magnesium	No	Zinc	Yes	2
Metal	Gas Evolved											
Copper	Yes											
Iron	Yes											
Magnesium	No											
Zinc	Yes											
22	How is the mode of action in beating of the heart different from reflex actions? Give four examples.	2										
23	Patients whose gallbladder are removed are recommended to eat less oily food. Why?	2										
24	Name the substances other than water, that are reabsorbed during urine formation. What are the two parameters that decide the amount of water that is reabsorbed in the kidney?	2										
25	 <p>State the phenomena observed in the above diagram. Explain with reference to the diagram, which of the two lights mentioned above will have the higher wavelength?</p> <p style="text-align: center;">OR</p> <p>How will you use two identical prisms so that a narrow beam of white light incident on one prism emerges out of the second prism as white light? Draw the diagram.</p>	2										

26	A lot of waste is generated in neighborhood. However, almost all of it is biodegradable. What impact will it have on the environment or human health?	2
SECTION - C Q.no. 27 to 33 are short answer questions.		
27	<p>i)</p> $\textcircled{A} + \textcircled{BC} \longrightarrow \textcircled{AC} + \textcircled{B}$ <p>ii)</p> $\textcircled{AB} + \textcircled{CD} \longrightarrow \textcircled{AC} + \textcircled{BD}$ <p>Identify the types of reaction mentioned above in (i) and (ii). Give one example for each type in the form of a balanced chemical equation.</p>	3
28	<div style="text-align: center;">  </div> <p>(a) Identify the gasses evolved at the anode and cathode in the above experimental set up.</p> <p>(b) Name the process that occurs. Why is it called so?</p> <p>(c) Illustrate the reaction of the process with the help of a chemical equation.</p>	3
29	<p>The leaves of a plant were covered with aluminium foil, how would it affect the physiology of the plant?</p> <p style="text-align: center;">OR</p> <p>How is lymph an important fluid involved in transportation? If lymphatic vessels get blocked, how would it affect the human body? Elaborate.</p>	3
30	<p>Rohit wants to have an erect image of an object using a converging mirror of focal length 40 cm.</p> <p>(a) Specify the range of distance where the object can be placed in front of the mirror. Justify.</p> <p>(b) Draw a ray diagram to show image formation in this case.</p> <p>(c) State one use of the mirror based on the above kind of image formation.</p>	3
31	<p>(a) A lens of focal length 5 cm is being used by Debashree in the laboratory as a magnifying glass. Her least distance of distinct vision is 25 cm.</p> <p>(i) What is the magnification obtained by using the glass?</p> <p>(ii) She keeps a book at a distance 10 cm from her eyes and tries to read. She is unable to read. What is the reason for this?</p>	3

	(b) Ravi kept a book at a distance of 10 cm from the eyes of his friend Hari. Hari is not able to read anything written in the book. Give reasons for this?	
32	<p>A student fixes a white sheet of paper on a drawing board. He places a bar magnet in the centre and sprinkles some iron filings uniformly around the bar magnet. Then he taps gently and observes that iron filings arrange themselves in a certain pattern.</p> <p>(a) Why do iron filings arrange themselves in a particular pattern? (b) Which physical quantity is indicated by the pattern of field lines around the bar magnet? (c) State any two properties of magnetic field lines.</p> <p style="text-align: center;">OR</p> <p>A compass needle is placed near a current carrying wire. State your observations for the following cases and give reasons for the same in each case-</p> <p>(a) Magnitude of electric current in wire is increased. (b) The compass needle is displaced away from the wire.</p>	3
33	Why is damage to the ozone layer a cause for concern? What are its causes and what steps are being taken to limit this damage?	3
SECTION - D Q.no. 34 to 36 are Long answer questions.		
34	<p>Shristi heated Ethanol with a compound A in presence of a few drops of concentrated sulphuric acid and observed a sweet smelling compound B is formed. When B is treated with sodium hydroxide it gives back Ethanol and a compound C.</p> <p>(a) Identify A and C (b) Give one use each of compounds A and B. (c) Write the chemical reactions involved and name the reactions.</p> <p style="text-align: center;">OR</p> <p>(a) What is the role of concentrated Sulphuric acid when it is heated with Ethanol at 443 K. Give the reaction involved. (b) Reshu by mistake forgot to label the two test tubes containing Ethanol and Ethanoic acid. Suggest an experiment to identify the substances correctly? Illustrate the reactions with the help of chemical equations</p>	5
35	<p>(a) Why is it not possible to reconstruct the whole organism from a fragment in complex multicellular organisms? (b) Sexual maturation of reproductive tissues and organs are necessary link for reproduction. Elucidate.</p> <p style="text-align: center;">OR</p> <p>(a) How are variations useful for species if there is drastic alteration in the niches? (b) Explain how the uterus and placenta provide necessary conditions for proper growth and development of the embryo after implantation?</p>	5

36



5

The diagram above is a schematic diagram of a household circuit. The house shown in the above diagram has 5 usable spaces where electrical connections are made. For this house, the mains have a voltage of 220 V and the net current coming from the mains is 22A.

- What is the mode of connection to all the spaces in the house from the mains?
- The spaces 5 and 4 have the same resistance and spaces 3 and 2 have respective resistances of 20Ω and 30Ω . Space 1 has a resistance double that of space 5. What is the net resistance for space 5.
- What is the current in space 3?
- What should be placed between the main connection and the rest of the house's electrical appliances to save them from accidental high electric current?

SECTION - E

Q.no. 37 to 39 are case - based/data -based questions with 2 to 3 short sub - parts. Internal choice is provided in one of these sub-parts.







37

Two students decided to investigate the effect of water and air on iron object under identical experimental conditions. They measured the mass of each object before placing it partially immersed in 10 ml of water. After a few days, the object were removed, dried and their masses were measured. The table shows their results.

4

Student	Object	Mass of Object before Rusting in g	Mass of the coated object in g
A	Nail	3.0	3.15
B	Thin plate	6.0	6.33

- What might be the reason for the varied observations of the two students?
- In another set up the students coated iron nails with zinc metal and noted that, iron nails coated with zinc prevents rusting. They also observed that zinc initially acts as a physical barrier, but an extra advantage of using zinc is that it continues to prevent rusting even if the layer of zinc is damaged. Name this process of rust prevention and give any two other methods to prevent rusting.

	<p style="text-align: center;">OR</p> <p>(b) In which of the following applications of Iron, rusting will occur most? Support your answer with valid reason.</p> <div style="display: flex; justify-content: space-around; align-items: center;"> <div style="text-align: center;"> <p>A</p>  </div> <div style="text-align: center;"> <p>B</p>  </div> <div style="text-align: center;"> <p>C</p>  </div> <div style="text-align: center;"> <p>D</p>  </div> </div> <p>A - Iron Bucket electroplated with Zinc B - Electricity cables having iron wires covered with aluminium C - Iron hinges on a gate D - Painted iron fence</p>	
38	<p>Pooja has green eyes while her parents and brother have black eyes. Pooja's husband Ravi has black eyes while his mother has green eyes and father has black eyes.</p> <p>(a) On the basis of the above given information, is the green eye colour a dominant or recessive trait? Justify your answer.</p> <p>(b) What is the possible genetic makeup of Pooja's brother's eye colour?</p> <p>(c) What is the probability that the offspring of Pooja and Ravi will have green eyes? Also, show the inheritance of eye colour in the offspring with the help of a suitable cross.</p> <p style="text-align: center;">OR</p> <p>(d) 50% of the offspring of Pooja's brother are green eyed. With help of cross show how this is possible.</p>	4
39	<div style="display: flex; justify-content: space-around;">   </div> <p>The above images are that of a specialized slide projector. Slides are small transparencies mounted in sturdy frames ideally suited to magnification and projection, since they have a very high resolution and a high image quality. There is a tray where the slides are to be put into a particular orientation so that the viewers can see the enlarged erect images of the transparent slides. This means that the slides will have to be inserted upside down in the projector tray.</p> <p>To show her students the images of insects that she investigated in the lab, Mrs. Iyer brought a slide projector. Her slide projector produced a 500 times enlarged and inverted image of a slide on a screen 10 m away.</p>	4

- | | | |
|--|---|--|
| | <p>(a) Based on the text and data given in the above paragraph, what kind of lens must the slide projector have?</p> <p>(b) If v is the symbol used for image distance and u for object distance then with one reason state what will be the sign for $\frac{v}{u}$ in the given case?</p> <p>(c) A slide projector has a convex lens with a focal length of 20 cm. The slide is placed upside down 21 cm from the lens. How far away should the screen be placed from the slide projector's lens so that the slide is in focus?</p> | |
|--|---|--|

OR

- (c) When a slide is placed 15 cm behind the lens in the projector, an image is formed 3 m in front of the lens. If the focal length of the lens is 14 cm, draw a ray diagram to show image formation. (not to scale)

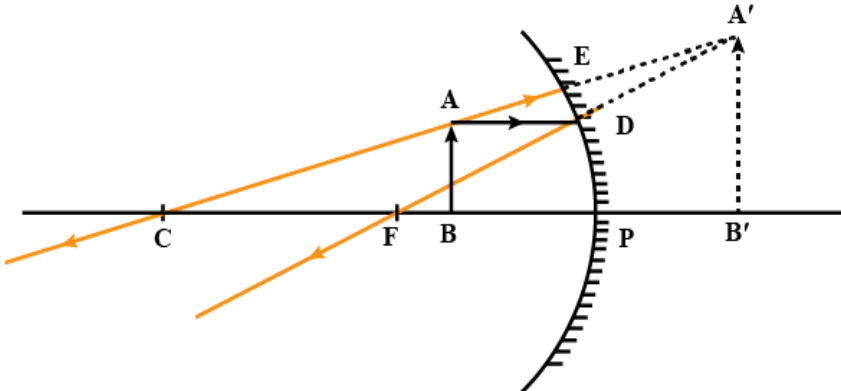
SCIENCE (086)
CLASS X
MARKING SCHEME (2022-23)

Q. No	Questions	Marks
SECTION – A		
1.	(c) Only iii	1
2.	(b) MnO_2 is reduced to MnCl_2 & HCl is oxidized to Cl_2	1
3.	(c) Magnesium ribbon burns with brilliant white light	1
4.	(b) CO_2 , Cl_2 , CO_2 , CO	1
5.	(d) Ferrous sulphate solution remains green with no change in the copper coin.	1
6.	(a) Only i	1
7.	(c) Addition of hydrogen in presence of catalyst changes A to C	1
8.	(b) II,III	1
9.	(b)	1
10.	(d)	1
11.	(d) C only	1
12.	(b) B and D	1
13.	(c) increases	1
14.	(b) 2 (Either North or South)	1
15.	(b) diameter d of the wire	1
16.	(d) The field consists of concentric circles centred around the wire.	1
17.	(c) A is true but R is false	1
18.	(a) Both A and R are true and R is the correct explanation of A	1
19.	(c) A is true but R is false	1
20.	(a) Both A and R are true and R is the correct explanation of A	1
SECTION – B		
21.	<p>Calcium hydroxide reacts with Carbon dioxide present in the atmosphere to form Calcium carbonate which results in milkiness/white ppt / Formation of Calcium carbonate (1mark)</p> <p>$\text{Ca(OH)}_2 + \text{CO}_2 \rightarrow \text{CaCO}_3 + \text{H}_2\text{O}$ (1mark)</p> <p style="text-align: center;">OR</p> <p>$\text{Fe} + \text{HCl} \rightarrow \text{FeCl}_2/ \text{FeCl}_3 + \text{H}_2$ (1mark) (No deduction for balancing/ states)</p> <p>$\text{Zn} + \text{HCl} \rightarrow \text{ZnCl}_2 + \text{H}_2$ - 1M</p>	2

22.	<table border="1"> <tbody> <tr> <td data-bbox="329 170 797 237">Beating of heart</td> <td data-bbox="797 170 1247 237">Reflex actions</td> </tr> <tr> <td data-bbox="329 237 797 310">Involuntary actions are the actions which are not controlled by our will.</td> <td data-bbox="797 237 1247 310">Reflex actions are the sudden action in response to something.</td> </tr> <tr> <td data-bbox="329 310 797 363">They do not need any kind of stimulus to work.</td> <td data-bbox="797 310 1247 363">They required stimulus for its action.</td> </tr> <tr> <td data-bbox="329 363 797 405">These actions are regulated by the brain.</td> <td data-bbox="797 363 1247 405">These actions are regulated by the spinal cord.</td> </tr> <tr> <td data-bbox="329 405 797 457">They do not involve skeletal muscle.</td> <td data-bbox="797 405 1247 457">They do involve skeletal muscle.</td> </tr> <tr> <td data-bbox="329 457 797 531">These actions are performed throughout one's life.</td> <td data-bbox="797 457 1247 531">These actions are produced in response to an event of an emergency.</td> </tr> <tr> <td data-bbox="329 531 797 573">This action may be quick or slow.</td> <td data-bbox="797 531 1247 573">Reflex actions are always quick.</td> </tr> </tbody> </table> <p data-bbox="906 615 1295 646" style="text-align: right;">Any four points ($\frac{1}{2} \times 4 = 2$ marks)</p>	Beating of heart	Reflex actions	Involuntary actions are the actions which are not controlled by our will.	Reflex actions are the sudden action in response to something.	They do not need any kind of stimulus to work.	They required stimulus for its action.	These actions are regulated by the brain.	These actions are regulated by the spinal cord.	They do not involve skeletal muscle.	They do involve skeletal muscle.	These actions are performed throughout one's life.	These actions are produced in response to an event of an emergency.	This action may be quick or slow.	Reflex actions are always quick.	2
Beating of heart	Reflex actions															
Involuntary actions are the actions which are not controlled by our will.	Reflex actions are the sudden action in response to something.															
They do not need any kind of stimulus to work.	They required stimulus for its action.															
These actions are regulated by the brain.	These actions are regulated by the spinal cord.															
They do not involve skeletal muscle.	They do involve skeletal muscle.															
These actions are performed throughout one's life.	These actions are produced in response to an event of an emergency.															
This action may be quick or slow.	Reflex actions are always quick.															
23.	Gallbladder stores bile which helps in emulsification of lipids (1mark). In the absence of stored bile, emulsification of fats will be negligible/ affected/ less (1mark) and thus fat digestion will be slow. Hence there are such diet restrictions.	2														
24.	Glucose, amino acids, salts (any 2, 1 mark each) and a major amount of water are selectively re-absorbed as the urine flows along the tube. The amount of water reabsorbed depends on how much excess water there is in the body (0.5 marks), and on how much of dissolved waste there is to be excreted (0.5marks)	2														
25.	<p data-bbox="329 1024 1287 1087">Dispersion- The splitting of white light into seven colours on passing through a prism. (1 mark)</p> <p data-bbox="329 1087 1287 1182">Velocity is directly proportional to wavelength given constant frequency. So yellow will have greater wavelength than blue as the velocity of yellow light is greater than blue. (0.5 + 0.5 mark)</p> <p data-bbox="792 1192 833 1224" style="text-align: center;">OR</p> <p data-bbox="329 1234 1287 1360">Angle of deflections of the two prisms need to be equal and opposite. While the first prism splits the light in the seven colours due to different angles of deflection, the second prism combines the spectrum along a single ray and the colours again combine to give white light as the emergent light. (1mark)</p> <div data-bbox="386 1381 1117 1665" style="text-align: center;"> <p>The diagram illustrates the dispersion and recombination of white light. A ray of white light enters an inverted prism labeled P₁ from the left. It is dispersed into a spectrum of colors, with red (R) at the top and violet (V) at the bottom. This spectrum then enters an upright prism labeled P₂. The rays are refracted such that they converge back into a single ray of white light. This recombined white light is projected onto a vertical screen on the right, labeled 'Screen'. The labels 'White light' are placed at the entry and exit points of the light rays.</p> </div> <p data-bbox="1206 1633 1295 1665" style="text-align: right;">(1mark)</p>	2														
26.	<p data-bbox="329 1749 1287 1843">Excess generation of biodegradable wastes can be harmful as - Its decomposition is a slow process leading to production of foul smell and gases. (1mark)</p> <p data-bbox="329 1843 1287 1877">It can be the breeding ground for germs that create unhygienic conditions.(1 mark)</p>	2														

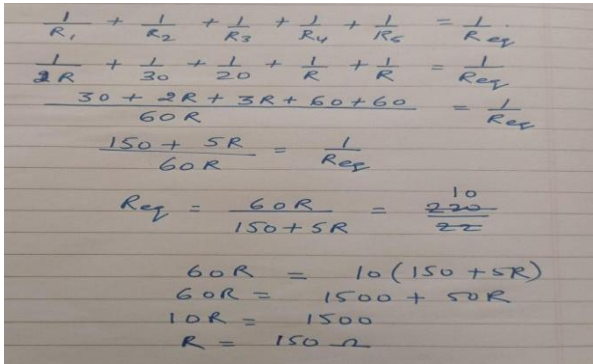
SECTION - C

Q.no. 27 to 33 are short answer questions.

27.	<p>i) Displacement - $\frac{1}{2}$ M</p> <ul style="list-style-type: none"> ● $\text{Fe(s)} + \text{CuSO}_4(\text{aq}) \rightarrow \text{FeSO}_4(\text{aq}) + \text{Cu(s)}$ (1 mark) ● $\text{Zn(s)} + \text{CuSO}_4(\text{aq}) \rightarrow \text{ZnSO}_4(\text{aq}) + \text{Cu(s)}$ ● $\text{Pb(s)} + \text{CuCl}_2(\text{aq}) \rightarrow \text{PbCl}_2(\text{aq}) + \text{Cu(s)}$ <p>(Any one of the reaction or other displacement reaction.)</p> <p>ii) Double displacement ($\frac{1}{2}$ mark)</p> <p>$\text{Na}_2\text{SO}_4(\text{aq}) + \text{BaCl}_2(\text{aq}) \rightarrow \text{BaSO}_4(\text{s}) + 2\text{NaCl}(\text{aq})$ (1 mark)</p> <p>(Any one of the reaction or other double displacement reaction.)</p>	3
28.	<p>(a) Anode: Chlorine; Cathode: Hydrogen</p> <p>(b) Chlor alkali process as the products obtained are alkali, chlorine gas and hydrogen gas</p> <p style="text-align: center;">Electric current</p> <p>(c) $2\text{NaCl}(\text{aq}) + 2\text{H}_2\text{O}(\text{l}) \xrightarrow{\text{Electric current}} 2\text{NaOH}(\text{aq}) + \text{Cl}_2(\text{g}) + \text{H}_2(\text{g})$</p>	3
29.	<p>No photosynthesis will occur so no glucose will be made. Also no respiration will take place as no Oxygen will be taken in. (1)</p> <p>No transpiration will occur so there would be no upward movement of water or minerals from the soil as there will be no transpirational pull.(1)</p> <p>Temperature regulation of leaf surface will be affected. (1)</p> <p style="text-align: center;">OR</p> <p>Lymph carries digested and absorbed fat from the intestine (1) and drains excess fluid from extracellular space back into the blood (1). Blockage of lymphatic system will lead to water retention and poor fat absorption in the body</p> <p style="text-align: right;">(1- any one)</p>	3
30.	<p>(a) The object has to be placed at a distance between 0 - 40 cm. This is because image is virtual, erect and magnified when the object is placed between F and P. (1mark)</p> <p>(b)</p>  <p>(1mark)</p> <p>(c) Used as shaving mirror or used by dentists to get enlarged image of teeth (any one use) (1mark)</p>	3

31.	<p>(a)</p> <p>Given, image distance = $v = -25$ cm, focal length = $f = 5$ cm, magnification = $m = ?$</p> <p>From lens formula, $\frac{1}{f} = \frac{1}{v} - \frac{1}{u} = \frac{1}{u} - \frac{1}{v} - \frac{1}{f}$</p> $\frac{1}{u} = \frac{1}{-25} - \frac{1}{5} = \frac{-1 - 5}{25} = \frac{-6}{25}$ <p>Object distance = $u = \frac{-25}{6}$ cm.</p> <p>We know that, $m = \frac{v}{u} = \frac{-25 \times 6}{-25} = 6$.</p> <p>(2 marks)</p> <p>(b) This is because the least distance of distinct vision is 25 cm. (1 mark)</p>	3
32.	<p>(a) When iron filings are placed in a magnetic field around a bar magnet, they behave like tiny magnets. The magnetic force experienced by these tiny magnets make them rotate and align themselves along the direction of field lines. (1 mark)</p> <p>(b) The physical property indicated by this arrangement is the magnetic field produced by the bar magnet. (1 mark)</p> <p>(c) Magnetic field lines never intersect, magnetic field lines are closed curves. (1 mark)</p> <p style="text-align: center;">OR</p> <p>(a) The deflection in the compass needle increases as Magnetic field of the current carrying conductor is directly proportional to current flowing through it. (1.5marks)</p> <p>(b) The deflection in the needle decreases as the magnetic field is inversely proportional to the perpendicular distance from the wire. (1.5marks)</p>	3
33.	<p>Damage to the ozone layer is a cause for concern because the ozone layer shields the surface of earth from harmful UV radiations from the sun which cause skin cancer in human beings.</p> <p>Synthetic chemicals like chlorofluorocarbons (CFCs) which are used as refrigerants and in the fire - extinguishers are the main reason for the depletion of the ozone layer.</p> <p>Steps taken to limit this damage - Many developing and developed countries have signed and are obeying the directions of UNEP (United Nations Environment Programme) to freeze or limit the production and usage of CFCs at 1986 levels. (1 x 3 = 3 marks)</p>	3
SECTION - D		
34.	<p>(a) A – Ethanoic acid/ Or any other carboxylic acid , C- Sodium salt of ethanoic acid/ any other carboxylic acid/ sodium ethanoate ($\frac{1}{2} + \frac{1}{2}$ mark)</p> <p>(b) Use of A- dil solution used as vinegar in cooking/ preservative in pickles (1mark)</p> <p>Use of B – making perfumes, flavoring agent (1 mark)</p> <p style="text-align: center;">Conc H_2SO_4</p> <p>(c) $CH_3COOH + C_2H_5OH \text{ -----} > CH_3COOC_2H_5 + H_2O$ (1mark)</p> <p>$CH_3COOC_2H_5 + NaOH \text{ -----} > CH_3COONa + C_2H_5OH$ (1mark)</p> <p style="text-align: center;">OR</p>	5

	<p>(a) Sulphuric acid acts as dehydrating agent (1mark) Conc H₂SO₄, 443K C₂H₅OH -----> C₂H₄ + H₂O (1mark)</p> <p>(b) By reaction with sodium carbonate/ bi carbonate 1M with the samples, ethanol will not react whereas ethanoic acid gives brisk effervescence (1mark) 2CH₃COOH + Na₂ CO₃ → 2CH₃COONa + H₂O+ CO₂</p> <p style="text-align: center;">OR</p> <p>CH₃COOH + NaHCO₃ → CH₃COONa + H₂O + CO₂ (1 mark)</p>	
35.	<p>(a) The reason is that many multi-cellular organisms are not simply a random collection of cells. Specialised cells are organised as tissues, and tissues are organised into organs, which then have to be placed at definite positions in the body. Therefore, cell-by-cell division would be impractical. (2 marks)</p> <p>(b) Sexual maturation of reproductive tissues is a necessary link for reproduction because of the need for specialised cell called germ-cells to participate in sexual reproduction. The body of the individual organism has to grow to its adult size, the rate of general body growth begins to slow down, reproductive tissues begin to mature. (1½ marks)</p> <p>A whole new set of changes in the appearance of the body takes place like change in body proportions, new features appear. This period during adolescence is called puberty.</p> <p>There are also changes taking place that are different between boys and girls. In girls, breast size begins to increase, with darkening of the skin of the nipples at the tips of the breasts. Also, girls begin to menstruate at around this time. Boys begin to have new thick hair growth on the face and their voices begin to crack. (1½ marks)</p> <p style="text-align: center;">OR</p> <p>(a) If the niche were drastically altered, the population could be wiped out. However, if some variations were to be present in a few individuals in these populations, there would be some chance for them to survive. Variation is thus useful for the survival of species over time. (2 marks)</p> <p>(b)</p> <ul style="list-style-type: none"> ● The lining of the uterus thickens and is richly supplied with blood to nourish the growing embryo. (½ mark) ● The embryo gets nutrition from the mother’s blood with the help of placenta. It is embedded in the uterine wall. (½ mark) ● It contains villi on the embryo’s side of the tissue. On the mother’s side are blood spaces, which surround the villi. (½ mark) ● This provides a large surface area for glucose and oxygen to pass from the mother to the embryo. The developing embryo will also generate waste substances which can be removed by transferring them into the mother’s blood through the placenta. (1 mark) ● The child is born as a result of rhythmic contractions of the muscles in the uterus. (½ mark) 	5

36.	<p>(a) All spaces are connected in parallel. (1mark)</p> <p>(b) Let Resistance of Space 5 and 4 be R ohms respectively (2marks)</p> <p>Resistance of Space 1 = 2 R ohms Resistance of Space 2 = 30 ohms Resistance of Space 3 = 20 ohms Current = 22 A V= 220 V Total Resistance= V/I</p> 	5
-----	--	---

SECTION - E

37.	<p>a) Rusting occurs in both A and B so there is an increase in mass. (1 mark)</p> <p>As the surface area of B is more, extent of rusting is more (1 mark)</p> <p>b) Galvanization -(1 mark)</p> <p>Oiling/ greasing/ painting/ alloying/ chromium plating or any other (any two ½ mark each) – (1 mark)</p> <p style="text-align: center;">OR</p> <p>b) C - Iron hinges on a gate - Iron is in contact with both atmospheric oxygen and moisture/ water vapour. (2 marks)</p>	4									
38.	<p>a. Yes, green eye colour is recessive (½ mark) as it will express only in homozygous condition (½ mark)</p> <p>b. BB, Bb (1 mark)</p> <p>c. bb*Bb (0.5mark)</p> <table border="1" data-bbox="367 1602 963 1801"> <tr> <td></td> <td>B</td> <td>b</td> </tr> <tr> <td>b</td> <td>Bb</td> <td>bb</td> </tr> <tr> <td>b</td> <td>Bb</td> <td>bb</td> </tr> </table> <p>Genetic cross - (1 mark) 50% of the offsprings can have green eye colour (0.5)</p>		B	b	b	Bb	bb	b	Bb	bb	4
	B	b									
b	Bb	bb									
b	Bb	bb									

OR

c. Brother is heterozygous(Bb) and wife is green(bb) - (1)
Wife bb*Bb brother

	B	b
b	Bb	bb
b	Bb	bb

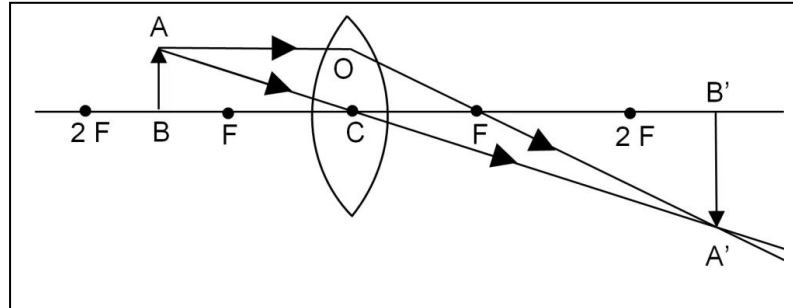
50% of the offsprings can have green eye colour as per the cross shown.(1 mark)

39.

- (a) Convex Lens (1mark)
(b) Negative as the image is real and inverted. (1mark)
(c) $1/f = 1/v - 1/u$
 $1/20 = 1/v - 1/-20$
 $1/v = 1/20 - 1/21$
 $= (21 - 20)/420$
 $= 1/420$
 $v = 420 \text{ cm}$ (2 marks)

OR

(c)



(2 marks)

4