

APPROXIMATELY 4.63 ACRES

10 S. 521 KINGERY HIGHWAY

GREAT BUILDER OPPORTUNITY

“FALLING WATER FIRST ADDITION SUBDIVISION”

BURR RIDGE, ILLINOIS



Land and Real Estate Advisors

Chris Tiedeman, Listing Agent

chris@landpartnersllc.com

847.370.9100

LAND PARTNERS, L.L.C.

3405 N. Kennicott Avenue, Suite A

Arlington Heights, Illinois 60004

Office: 847-394-8000

WWW.LANDPARTNERSLLC.COM



APPROXIMATELY 4.63 ACRES

10 S. 521 KINGERY HIGHWAY

GREAT BUILDER OPPORTUNITY

“FALLING WATER FIRST ADDITION SUBDIVISION”

BURR RIDGE, ILLINOIS



Land and Real Estate Advisors

Chris Tiedeman, Listing Agent

chris@landpartnersllc.com

847.370.9100

LAND PARTNERS, L.L.C.

3405 N. Kennicott Avenue, Suite A

Arlington Heights, Illinois 60004

Office: 847-394-8000

WWW.LANDPARTNERSLLC.COM



APPROXIMATELY 4.63 ACRES

10 S. 521 KINGERY HIGHWAY

GREAT BUILDER OPPORTUNITY

“FALLING WATER FIRST ADDITION SUBDIVISION”

BURR RIDGE, ILLINOIS

PROPERTY DETAILS:

PRICE: \$1,495,000

PRICE IMPROVEMENT \$1,099,000

LOCATION DESCRIPTION:

The site is located east of Route 83, south of 91st Street in Burr Ridge.

PROPERTY DESCRIPTION:

The property is zoned R2-B . Nice deep lots unique to many others in the subdivision community.

DETAILS:

Lots are approximately 30,000 square feet . The property is adjacent to the prestigious “Falling Water” Subdivision.

Additional information regarding buyer site improvement obligations available upon request.



Land and Real Estate Advisors


Chris Tiedeman, Listing Agent

chris@landpartnersllc.com

847.370.9100

LAND PARTNERS, L.L.C.

3405 N. Kennicott Avenue, Suite A
Arlington Heights, Illinois 60004

Office: 847-394-8000 

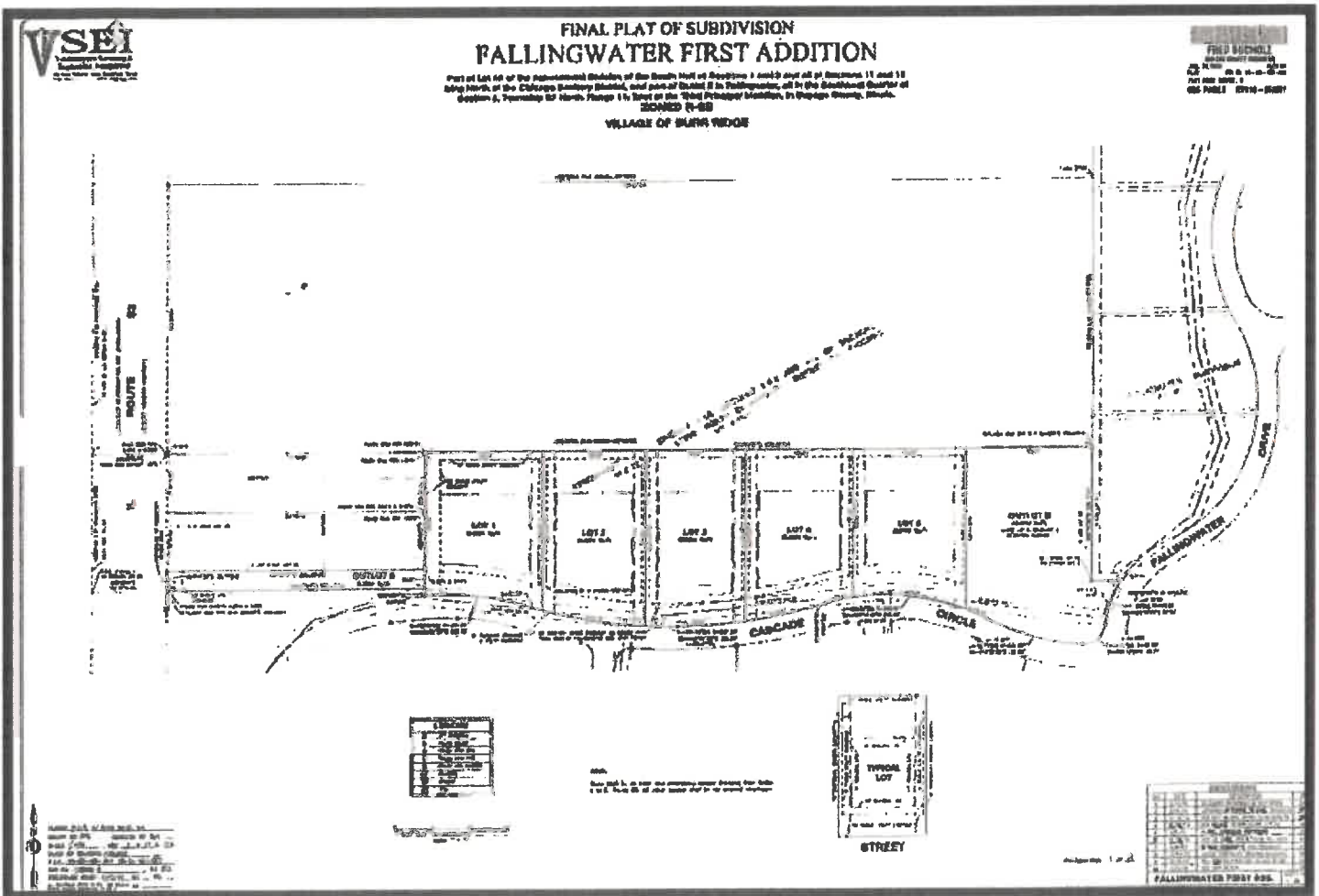
APPROXIMATELY 4.63 ACRES

10 S. 521 KINGERY HIGHWAY

GREAT BUILDER OPPORTUNITY

“FALLING WATER FIRST ADDITION SUBDIVISION”

BURR RIDGE, ILLINOIS



Land and Real Estate Advisors

Chris Tiedeman, Listing Agent

chris@landpartnersllc.com

847.370.9100

LAND PARTNERS, L.L.C.

3405 N. Kennicott Avenue, Suite A

Arlington Heights, Illinois 60004

Office: 847-394-8000

WWW.LANDPARTNERSLLC.COM



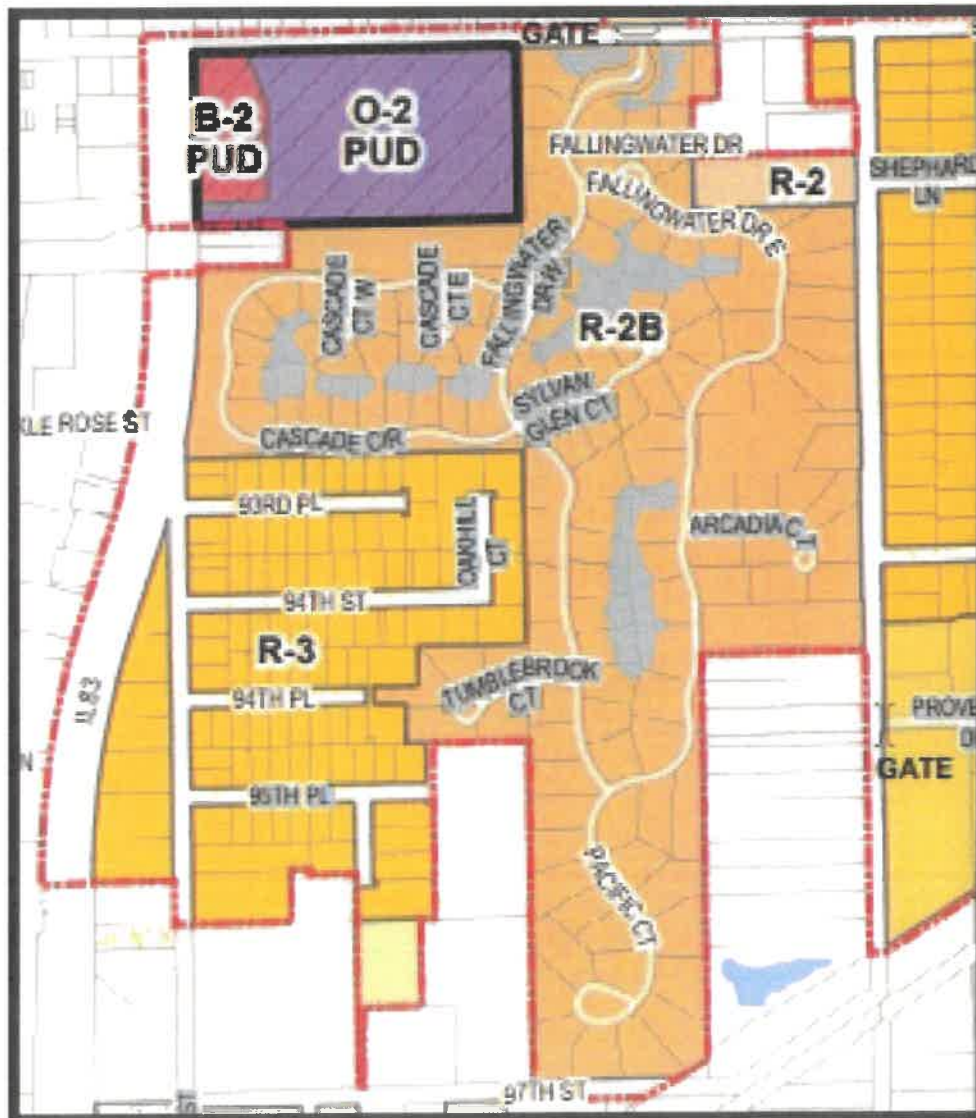
APPROXIMATELY 4.63 ACRES

10 S. 521 KINGERY HIGHWAY

GREAT BUILDER OPPORTUNITY

“FALLING WATER FIRST ADDITION SUBDIVISION”

BURR RIDGE, ILLINOIS



Land and Real Estate Advisors

Chris Tiedeman, Listing Agent

chris@landpartnersllc.com

847.370.9100

LAND PARTNERS, L.L.C.

3405 N. Kennicott Avenue, Suite A

Arlington Heights, Illinois 60004

Office: 847-394-8000

WWW.LANDPARTNERSLLC.COM

