

Choke City / Ah, LLC

jasonkennedy.los@gmail.com

806-751-0375

Sample 622-062023-012

THCa Hemp Flower

Batch/Lot # SB-2803006

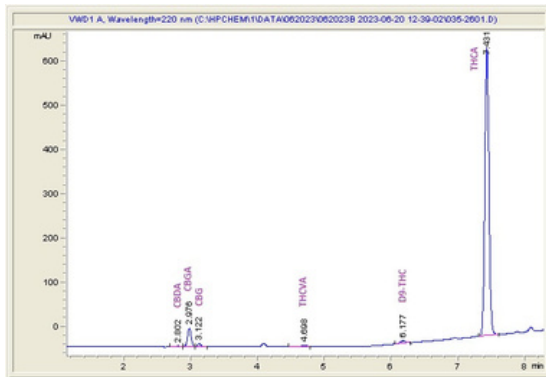
Sample Submitted: 06-20-2023; Report Date: 06-21-2023

Purple Skunk Berry THCa Hemp Flower

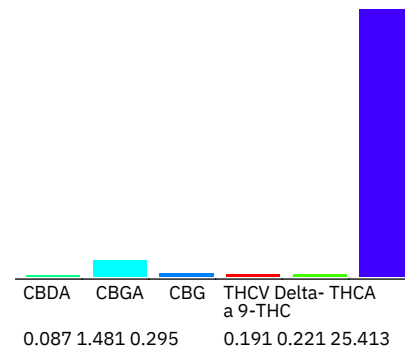
Batch/Lot # SB-2803006

Plant Material: Flower

Chromatogram



Cannabinoid Profile



Cannabinoid Profile by HPLC

0.22%

Delta-9-THC

0.00%

CBD

27.69%

Total Cannabinoids

| Cannabinoid | % wt | mg/g |
|-----------------------------|--------------|---------------|
| CBDA | 0.087 | 0.87 |
| CBGA | 1.481 | 14.81 |
| CBG | 0.295 | 2.95 |
| THCVa | 0.191 | 1.91 |
| Delta-9-THC | 0.221 | 2.21 |
| THCA | 25.41 | 254.13 |
| Total Cannabinoids | 27.69 | 276.9 |
| Calculated Total THC | 22.51 | 225.08 |
| Calculated CBD Yield | 0.08 | 0.76 |

Calculated Total THC = Delta-9-THC + 0.877 * THCA

Calculated Maximum CBD Yield = CBD + 0.877 * CBDA

Marin Analytics, LLC

250 Bel Marin Keys Blvd, Suite D4
Novato, CA 94949

833-321-TEST / info@marinanalytics.com

Sara Biancalana
Sara Biancalana
Chief Scientist