



Do not scale from this drawing, except for town planning purposes.
 Work to figured dimensions only.
 This drawing is the property of Brimelow McSweeney Architects and copyright is reserved by them.
 This drawing is issued on condition that it is not copied, used or disclosed by or to any unauthorised person without the prior written consent of Brimelow McSweeney Architects.
 The areas on the drawing have been measured directly from a CAD drawing and have no tolerances added or subtracted.
 The areas have been calculated in accordance with the Code of Measuring Practice, 6th Edition (2007) using the stated options N/A, G/A, GEA. They are approximate and relate to the likely areas of the building at the current state of the design. Any decisions to be made on the basis of these predictions, whether as to project viability, pre-letting, lease agreements and the like, should make allowance for the following:
 - Design development
 - Accurate site survey, site levels and dimensions need to be fully evaluated
 - Allowances for construction methods and building tolerances.
 - Local authority consents

rev date drawn by chkd description
 / 05.01.16 HY SH FIRST ISSUE

- KEY
-  Wall to be demolished
 -  Section to be demolished

status **FOR PLANNING**

BRIMELOW McSWEENEY ARCHITECTS 
 28 Great Queen Street, Covent Garden, London WC2B 5EL
 tel: 020 7831 7835 - fax: 020 7831 7839 - email: admin@brimelowmcsweeney.co.uk

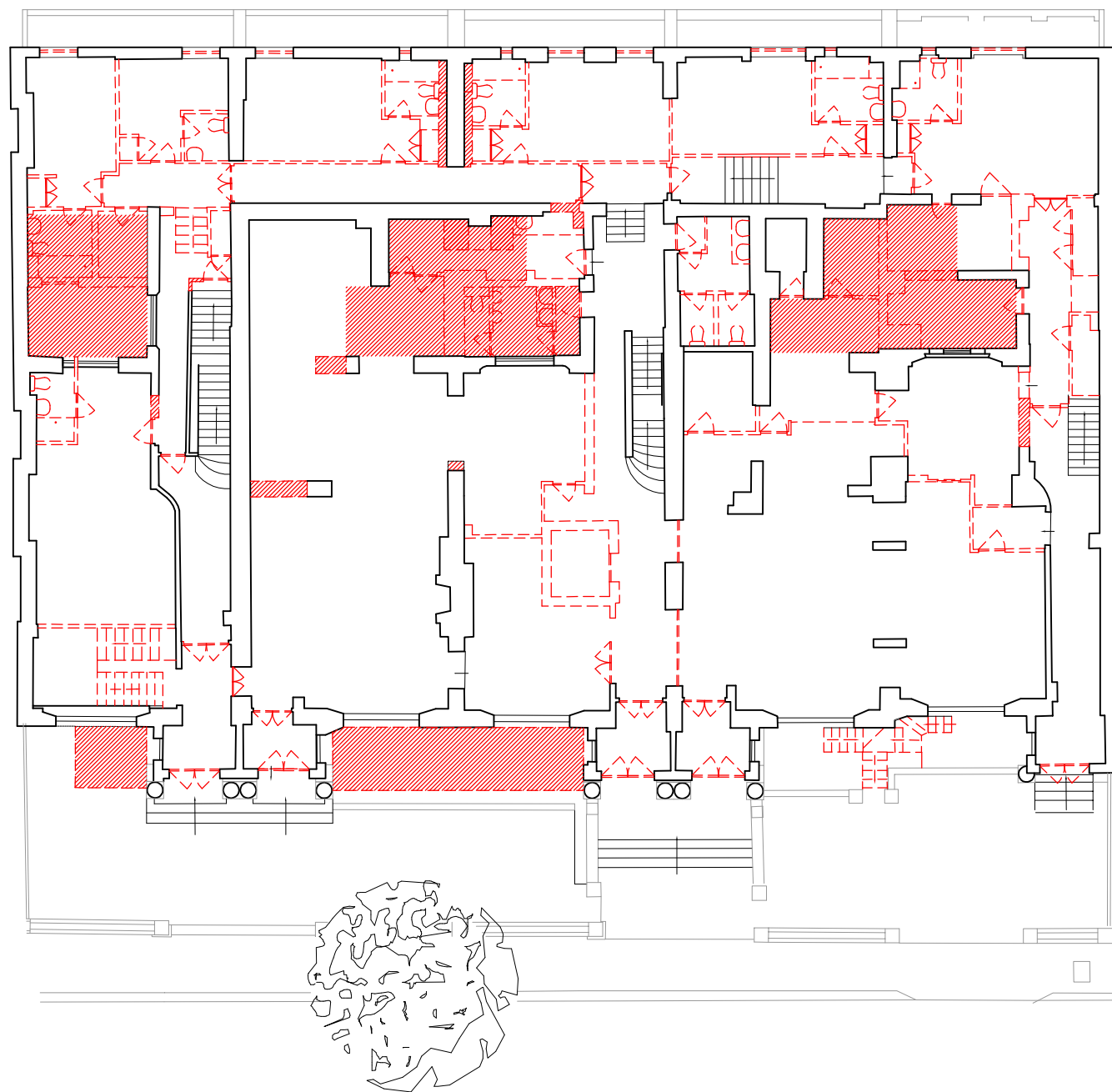
project
35 - 39 Leinster Gardens
 London W2 3AN

file
Demolition Lower Ground Floor Plan

scale	date	drawn
1:200@A3	05-01-16	HY
drawing no.	revision	
1422-0900	.	


Do not scale from this drawing, except for town planning purposes.
 Work to figured dimensions only.
 This drawing is the property of Brimelow McSweeney Architects and copyright is reserved by them.
 This drawing is issued on condition that it is not copied, used or disclosed by or to any unauthorised person without the prior written consent of Brimelow McSweeney Architects.
 The areas on the drawing have been measured directly from a CAD drawing and have no tolerances added or subtracted.
 The areas have been calculated in accordance with the Code of Measuring Practice, 6th Edition (2007) using the stated options N/A, GIA, GEA. They are approximate and relate to the likely areas of the building at the current state of the design. Any decisions to be made on the basis of these predictions, whether as to project viability, pre-felling, lease agreements and the like, should make allowance for the following:
 - Design development
 - Accurate site survey, site levels and dimensions need to be fully evaluated
 - Allowance for construction methods and building tolerances.
 - Local authority consents

rev date drawn by chkd description
 / 05.01.16 HY SH FIRST ISSUE



- KEY
- Wall to be demolished
 - Section to be demolished

status **FOR PLANNING**

**BRIMELOW
 McSWEENEY
 ARCHITECTS** 

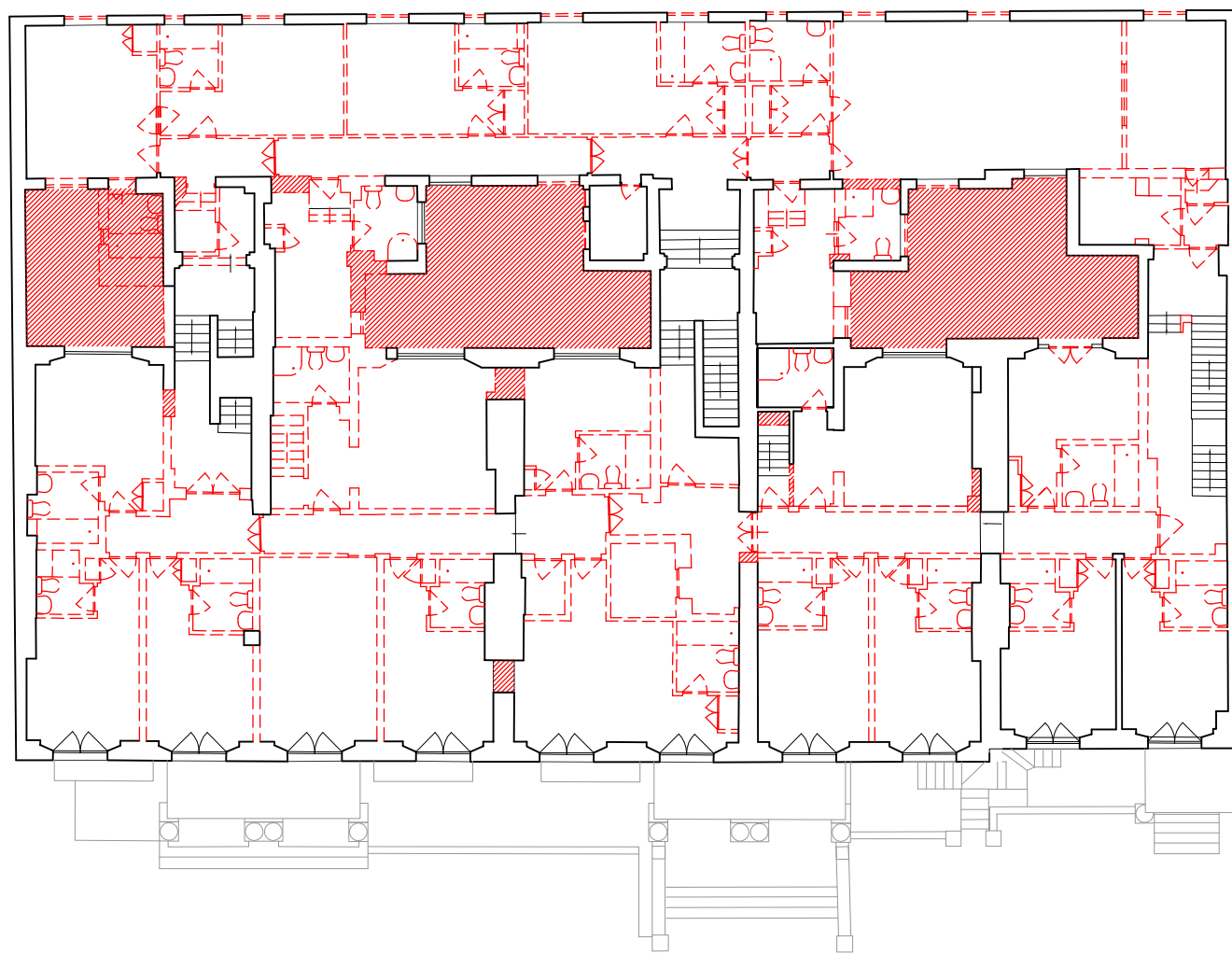
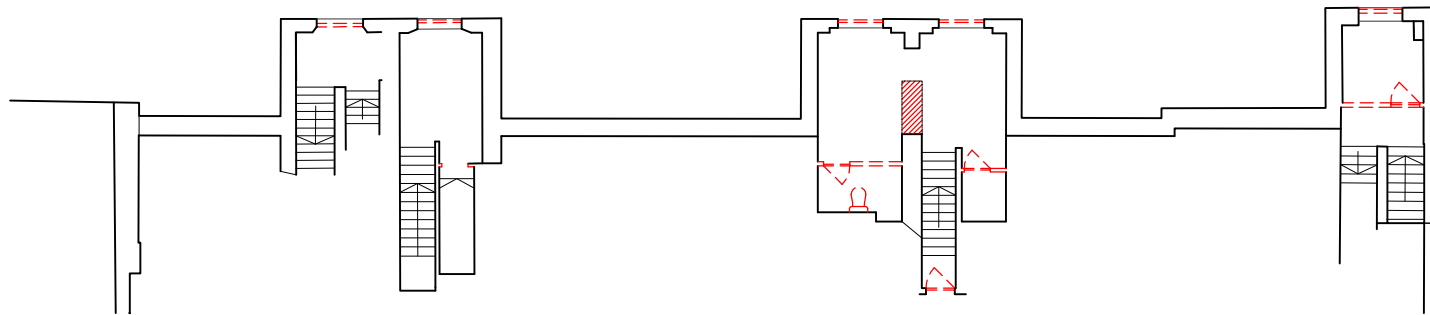
28 Great Queen Street, Covent Garden, London WC2B 5EL
 tel: 020 7831 7835 - fax: 020 7831 7839 - email: admin@brm-architects.co.uk

project
**35 - 39 Leinster Gardens
 London W2 3AN**

file
Demolition Ground Floor Plan

scale	date	drawn
1:200@A3	05-01-16	HY

drawing no.	revision
1422-0901	.



Do not scale from this drawing, except for town planning purposes.
 Work to figured dimensions only.
 This drawing is the property of Brimelow McSweeney Architects and copyright is reserved by them.
 This drawing is issued on condition that it is not copied, used or disclosed by or to any unauthorised person without the prior written consent of Brimelow McSweeney Architects.
 The areas on the drawing have been measured directly from a CAD drawing and have no tolerances added or subtracted.
 The areas have been calculated in accordance with the Code of Measuring Practice, 6th Edition (2007) using the stated options N/A, G/A, GEA. They are approximate and relate to the likely areas of the building at the current state of the design. Any decisions to be made on the basis of these predictions, whether as to project viability, pre-letting, lease agreements and the like, should make allowance for the following:
 - Design development
 - Accurate site survey, site levels and dimensions need to be fully evaluated
 - Allowance for construction methods and building tolerances.
 - Local authority consents


rev date drawn by chkd description
 / 05.01.16 HY SH FIRST ISSUE

KEY

— Wall to be demolished

▨ Section to be demolished

status **FOR PLANNING**

**BRIMELOW
 McSWEENEY
 ARCHITECTS** 

28 Great Queen Street, Covent Garden, London WC2B 5EL
 tel: 020 7831 7835 - fax: 020 7831 7839 - email: adm@brm-architects.co.uk

project
**35 - 39 Leinster Gardens
 London W2 3AN**

file
Demolition First Floor Plan

scale 1:200@A3 date 05-01-16 drawn HY

drawing no. 1422-0902 revision



Do not scale from this drawing, except for town planning purposes.
 Work to figured dimensions only.
 This drawing is the property of Brimelow McSweeney Architects and copyright is reserved by them.
 This drawing is issued on condition that it is not copied, used or disclosed by or to any unauthorised person without the prior written consent of Brimelow McSweeney Architects.
 The areas on the drawing have been measured directly from a CAD drawing and have no tolerances added or subtracted.
 The areas have been calculated in accordance with the Code of Measuring Practice, 6th Edition (2007) using the stated options N/A, G/A, GEA. They are approximate and relate to the likely areas of the building at the current state of the design. Any decisions to be made on the basis of these predictions, whether as to project viability, pre-felling, lease agreements and the like, should make allowance for the following:
 - Design development
 - Accurate site survey, site levels and dimensions need to be fully evaluated
 - Allowances for construction methods and building tolerances.
 - Local authority consents

rev	date	drawn by	chkd	description
/	05.01.16	HY	SH	FIRST ISSUE

- KEY
- Wall to be demolished
 - Section to be demolished

status **FOR PLANNING**

**BRIMELOW
McSWEENEY
ARCHITECTS**

28 Great Queen Street, Covent Garden, London WC2B 5EL.
 tel: 020 7831 7835 - fax: 020 7831 7839 - email: admin@brm-architects.co.uk

project
**35 - 39 Leinster Gardens
 London W2 3AN**

file
Demolition Second Floor Plan

scale	date	drawn
1:200@A3	05-01-16	HY

drawing no.	revision
1422-0903	.



Do not scale from this drawing, except for town planning purposes.
 Work to figured dimensions only.
 This drawing is the property of Brimelow McSweeney Architects and copyright is reserved by them.
 This drawing is issued on condition that it is not copied, used or disclosed by or to any unauthorised person without the prior written consent of Brimelow McSweeney Architects.
 The areas on the drawing have been measured directly from a CAD drawing and have no tolerances added or subtracted.
 The areas have been calculated in accordance with the Code of Measuring Practice, 6th Edition (2007) using the stated options N/A, G/A, GEA. They are approximate and relate to the likely areas of the building at the current state of the design. Any decisions to be made on the basis of these predictions, whether as to project viability, pre-letting, lease agreements and the like, should make allowance for the following:
 - Design development
 - Accurate site survey, site levels and dimensions need to be fully evaluated
 - Allowances for construction methods and building tolerances.
 - Local authority consents

rev date drawn by chkd description
 / 05.01.16 HY SH FIRST ISSUE

- KEY
- Wall to be demolished
 - Section to be demolished

status **FOR PLANNING**

BRIMELOW McSWEENEY ARCHITECTS 

28 Great Queen Street, Covent Garden, London WC2B 5EL
 tel: 020 7831 7835 - fax: 020 7831 7839 - email: admin@brm-architects.co.uk

project
**35 - 39 Leinster Gardens
 London W2 3AN**

file
Demolition Third Floor Plan



scale date drawn
 1:200@A3 05-01-15 HY

drawing no. revision
1422-0904 .



Do not scale from this drawing, except for town planning purposes.
 Work to figured dimensions only.
 This drawing is the property of Brimelow McSweeney Architects and copyright is reserved by them.
 This drawing is issued on condition that it is not copied, used or disclosed by or to any unauthorised person without the prior written consent of Brimelow McSweeney Architects.
 The areas on the drawing have been measured directly from a CAD drawing and have no tolerances added or subtracted.
 The areas have been calculated in accordance with the Code of Measuring Practice, 6th Edition (2007) using the stated options N/A, G/A, GEA. They are approximate and relate to the likely areas of the building at the current state of the design. Any decisions to be made on the basis of these predictions, whether as to project viability, pre-letting, lease agreements and the like, should make allowance for the following:
 - Design development
 - Accurate site survey, site levels and dimensions need to be fully evaluated
 - Allowances for construction methods and building tolerances.
 - Local authority consents

rev	date	drawn by	chkd	description
/	05.01.16	HY	SH	FIRST ISSUE

- KEY
-  Wall to be demolished
 -  Section to be demolished

status **FOR PLANNING**

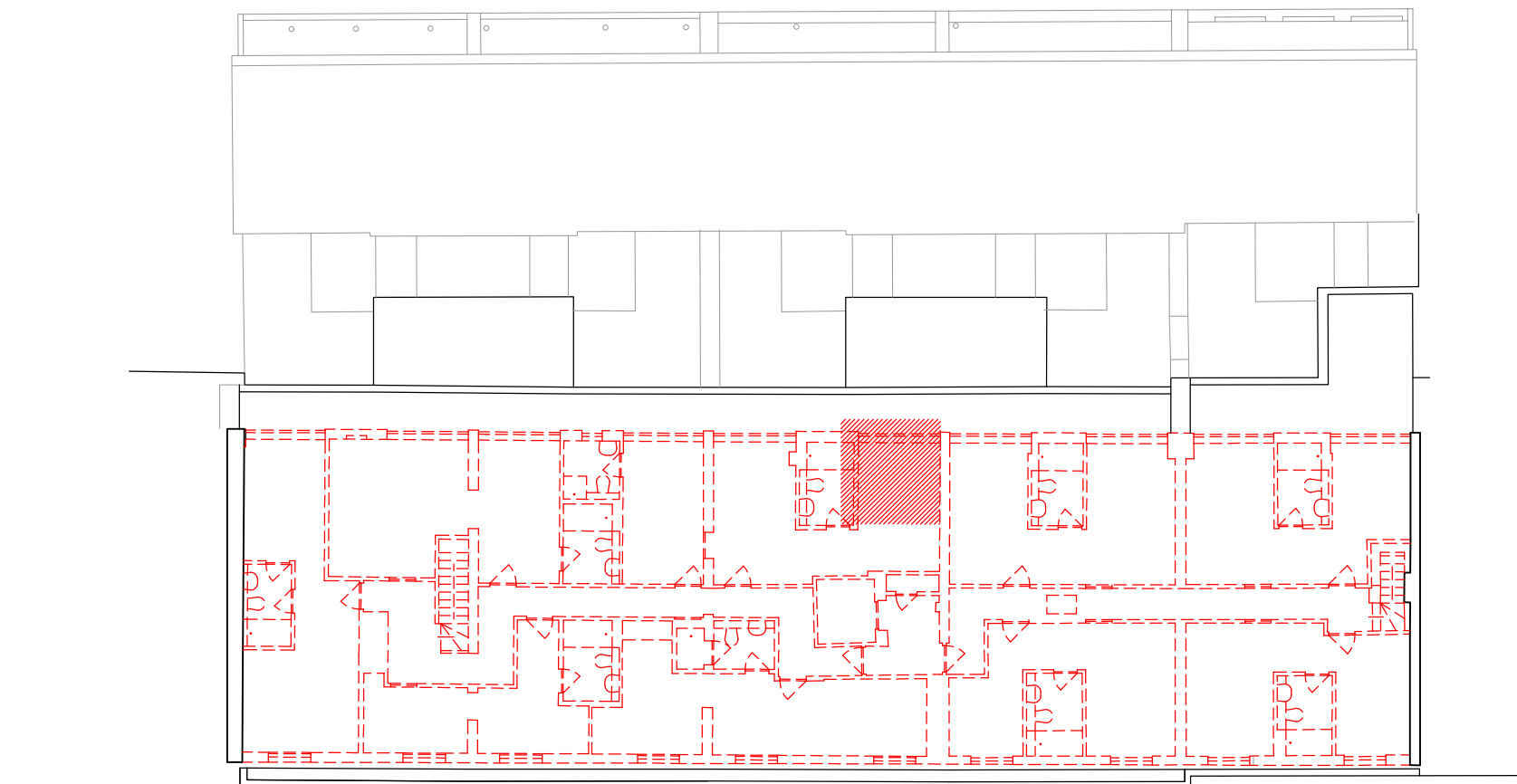
**BRIMELOW
 McSWEENEY
 ARCHITECTS** 
 28 Great Queen Street, Covent Garden, London WC2B 5EL
 tel: 020 7831 7835 - fax: 020 7831 7839 - email: admin@brim-architects.co.uk

project
**35 - 39 Leinster Gardens
 London W2 3AN**

file
Demolition Fourth Floor Plan

scale	date	drawn
1:200@A3	05-01-16	HY

drawing no.	revision
1422-0905	.




Do not scale from this drawing, except for town planning purposes.
 Work to figured dimensions only.
 This drawing is the property of Brimelow McSweeney Architects and copyright is reserved by them.
 This drawing is issued on condition that it is not copied, used or disclosed by or to any unauthorised person without the prior written consent of Brimelow McSweeney Architects.
 The areas on the drawing have been measured directly from a CAD drawing and have no tolerances added or subtracted.
 The areas have been calculated in accordance with the Code of Measuring Practice, 6th Edition (2007) using the stated options N/A, G/A, GEA. They are approximate and relate to the likely areas of the building at the current state of the design. Any decisions to be made on the basis of these predictions, whether as to project viability, pre-letting, lease agreements and the like, should make allowance for the following:
 - Design development
 - Accurate site survey, site levels and dimensions need to be fully evaluated
 - Allowances for construction methods and building tolerances.
 - Local authority consents

rev	date	drawn by	chkd	description
/	05.01.16	HY	SH	FIRST ISSUE

- KEY**
- Wall to be demolished
 - Section to be demolished

status **FOR PLANNING**

**BRIMELOW
McSWEENEY
ARCHITECTS** 

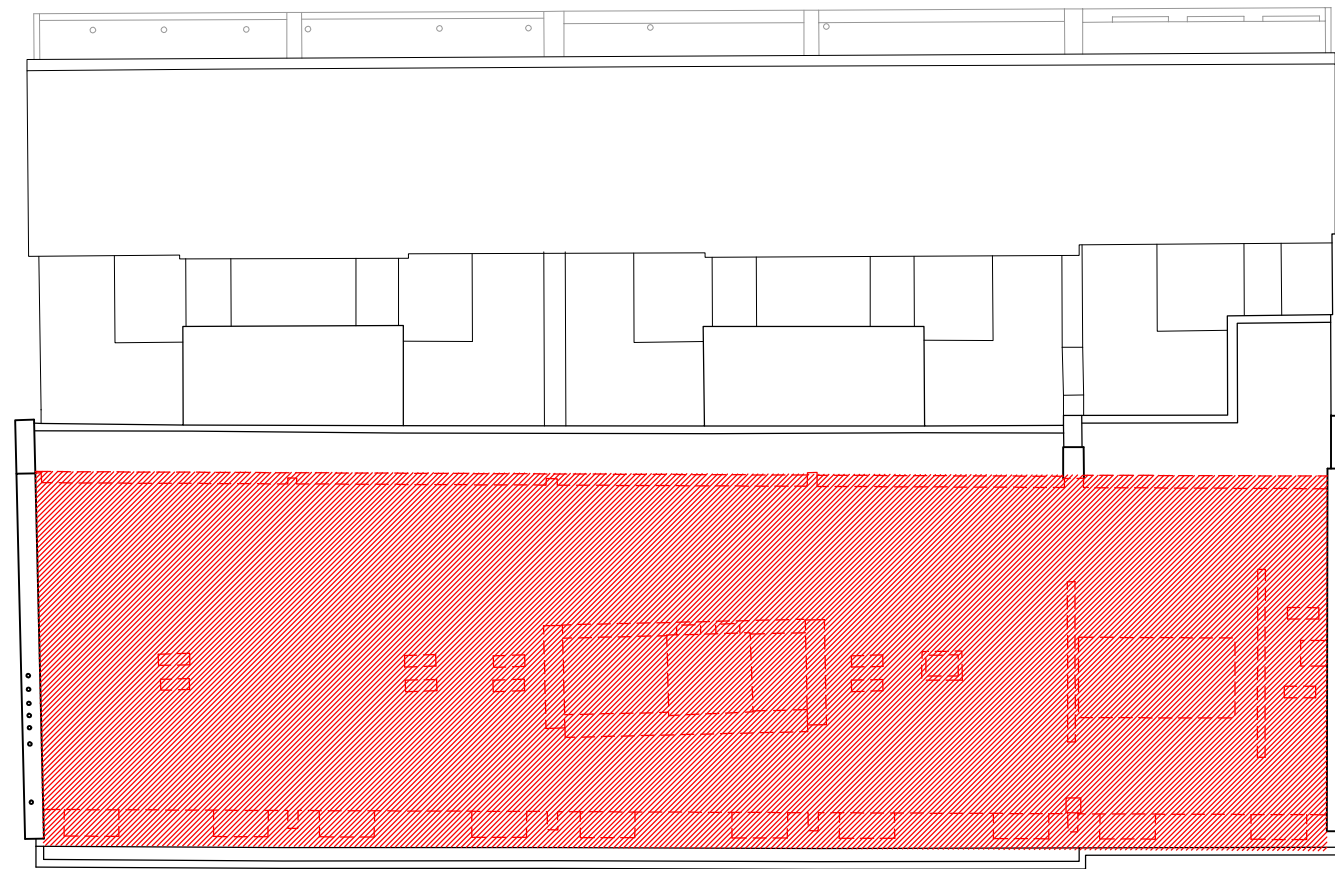
28 Great Queen Street, Covent Garden, London WC2B 5EL
 tel: 020 7831 7835 - fax: 020 7831 7839 - email: admin@brim-architects.co.uk

project
**35 - 39 Leinster Gardens
 London W2 3AN**

file
Demolition Fifth Floor Plan



scale	date	drawn
1:200@A3	05-01-16	HY

drawing no.	revision
1422-0906	.



Do not scale from this drawing, except for town planning purposes.
 Work to figured dimensions only.
 This drawing is the property of Brimelow McSweeney Architects and copyright is reserved by them.
 This drawing is issued on condition that it is not copied, used or disclosed by or to any unauthorised person without the prior written consent of Brimelow McSweeney Architects.
 The areas on the drawing have been measured directly from a CAD drawing and have no tolerances added or subtracted.
 The areas have been calculated in accordance with the Code of Measuring Practice, 6th Edition (2007) using the stated options N/A, G/A, GEA. They are approximate and relate to the likely areas of the building at the current state of the design. Any decisions to be made on the basis of these predictions, whether as to project viability, pre-felling, lease agreements and the like, should make allowance for the following:
 - Design development
 - Accurate site survey, site levels and dimensions need to be fully evaluated
 - Allowance for construction methods and building tolerances.
 - Local authority consents

rev	date	drawn by	chkd	description
/	05.01.16	HY	SH	FIRST ISSUE

- KEY**
-  Wall to be demolished
 -  Section to be demolished

status **FOR PLANNING**

**BRIMELOW
 McSWEENEY
 ARCHITECTS** 
 28 Great Queen Street, Covent Garden, London WC2B 5EL
 tel: 020 7631 7835 - fax: 020 7631 7839 - email: admin@brim-architects.co.uk

project
**35 - 39 Leinster Gardens
 London W2 3AN**

file
Demolition Roof Plan

scale	date	drawn
1:200@A3	05-01-16	HY

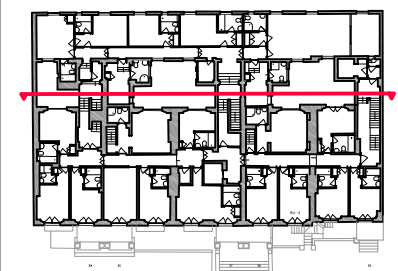
drawing no.	revision
1422-0907	.

Do not scale from this drawing, except for town planning purposes.
 Work to figured dimensions only.
 This drawing is the property of Brimelow McSweeney Architects and copyright is reserved by them.
 This drawing is issued on condition that it is not copied, used or disclosed by or to any unauthorised person without the prior written consent of Brimelow McSweeney Architects.
 The areas on the drawing have been measured directly from a CAD drawing and have no tolerances added or subtracted.
 The areas have been calculated in accordance with the Code of Measuring Practice, 6th Edition (2007) using the stated options N/A, G/A, GEA. They are approximate and relate to the likely areas of the building at the current state of the design. Any decisions to be made on the basis of these predictions, whether as to project viability, pre-letting, lease agreements and the like, should make allowance for the following:
 - Design development
 - Accurate site survey, site levels and dimensions need to be fully evaluated
 - Allowance for construction methods and building tolerances.
 - Local authority consents


rev date drawn by chkd description
 / 05.01.16 SH SH FIRST ISSUE



KEY
 ——— Wall to be demolished
 [Red Hatched Box]



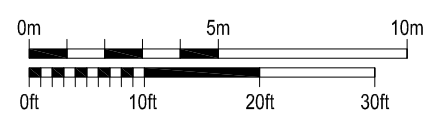
status **FOR PLANNING**

BRIMELOW McSWEENEY ARCHITECTS 
 28 Great Queen Street, Covent Garden, London WC2B 5EL
 tel: 020 7631 7835 - fax: 020 7631 7839 - email: admin@brim-architects.co.uk

project
35-39 Leinster Gardens
 London W2 3AN

file
Demolition Section BB

scale 1:200@A3 date 05-01-16 drawn KM
 drawing no. 1422-0910 revision /

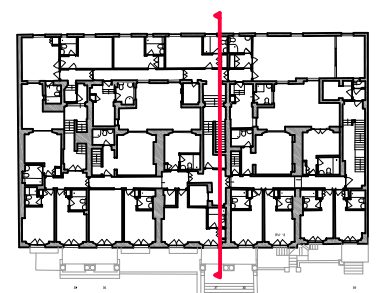




D:\m\0200w

Do not scale from this drawing, except for town planning purposes.
 Work to figured dimensions only.
 This drawing is the property of Brimelow McSweeney Architects and copyright is reserved by them.
 This drawing is issued on condition that it is not copied, used or disclosed by or to any unauthorised person without the prior written consent of Brimelow McSweeney Architects.
 The areas on the drawing have been measured directly from a CAD drawing and have no tolerances added or subtracted.
 The areas have been calculated in accordance with the Code of Measuring Practice, 6th Edition (2007) using the stated options N/A, G/A, GEA. They are approximate and relate to the likely areas of the building at the current state of the design. Any decisions to be made on the basis of these predictions, whether as to project viability, pre-letting, lease agreements and the like, should make allowance for the following:
 - Design development
 - Accurate site survey, site levels and dimensions need to be fully evaluated
 - Allowances for construction methods and building tolerances.
 - Local authority consents
 rev date drawn by chkd description
 / 05.01.16 SH SH FIRST ISSUE

KEY
 ——— Wall to be demolished
 ▨ Section to be demolished



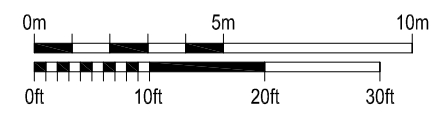
status **FOR PLANNING**

BRIMELOW McSWEENEY ARCHITECTS 
 28 Great Queen Street, Covent Garden, London WC2B 5EL
 tel: 020 7831 7835 - fax: 020 7831 7839 - email: admin@brim-architects.co.uk

project
35-39 Leinster Gardens
 London W2 3AN

title
Demolition Section FF

scale 1:200@A3	date 05-01-16	drawn KM
drawing no. 1422-0911	revision /	




Do not scale from this drawing, except for town planning purposes.
 Work to figured dimensions only.
 This drawing is the property of Brimelow McSweeney Architects and copyright is reserved by them.
 This drawing is issued on condition that it is not copied, used or disclosed by or to any unauthorised person without the prior written consent of Brimelow McSweeney Architects.
 The areas on the drawing have been measured directly from a CAD drawing and have no tolerances added or subtracted.
 The areas have been calculated in accordance with the Code of Measuring Practice, 6th Edition (2007) using the stated options N/A, GIA, GEA. They are approximate and relate to the likely areas of the building at the current state of the design. Any decisions to be made on the basis of these predictions, whether as to project viability, pre-felling, lease agreements and the like, should make allowance for the following:
 - Design development
 - Accurate site survey, site levels and dimensions need to be fully evaluated
 - Allowances for construction methods and building tolerances.
 - Local authority consents

rev date drawn by chkd description
 / 05.01.16 SH SH FIRST ISSUE



status **FOR PLANNING**

BRIMELOW McSWEENEY ARCHITECTS 

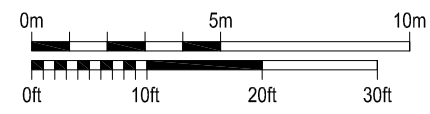
28 Great Queen Street, Covent Garden, London WC2B 5EL
 tel: 020 7831 7835 - fax: 020 7831 7839 - email: adm@brimelow-mcsweeney.co.uk

project
35-39 Leinster Gardens
 London W2 3AN

file
Demolition Front Elevation

scale 1:200@A3 date 05-01-16 drawn SH

drawing no. 1422-0912 revision /



04/10/2016



Do not scale from this drawing, except for town planning purposes.
 Work to figured dimensions only.
 This drawing is the property of Brimelow McSweeney Architects and copyright is reserved by them.
 This drawing is issued on condition that it is not copied, used or disclosed by or to any unauthorised person without the prior written consent of Brimelow McSweeney Architects.
 The areas on the drawing have been measured directly from a CAD drawing and have no tolerances added or subtracted.
 The areas have been calculated in accordance with the Code of Measuring Practice, 6th Edition (2007) using the stated options N/A, GIA, GEA. They are approximate and relate to the likely areas of the building at the current state of the design. Any decisions to be made on the basis of these predictions, whether as to project viability, pre-letting, lease agreements and the like, should make allowance for the following:
 - Design development
 - Accurate site survey, site levels and dimensions need to be fully evaluated
 - Allowances for construction methods and building tolerances.
 - Local authority consents

rev date drawn by chkd description
 / 05.01.16 SH SH FIRST ISSUE

status		
FOR PLANNING		
BRIMELOW McSWEENEY ARCHITECTS 		
<small>28 Great Queen Street, Covent Garden, London WC2B 5EL. tel: 020 7831 7835 - fax: 020 7831 7839 - email: admin@brim-architects.co.uk</small>		
project		
35-39 Leinster Gardens London W2 3AN		
title		
Demolition Rear Elevation		
scale	date	drawn
1:200@A3	05-01-16	SH
drawing no.	revision	
1422-0913	/	