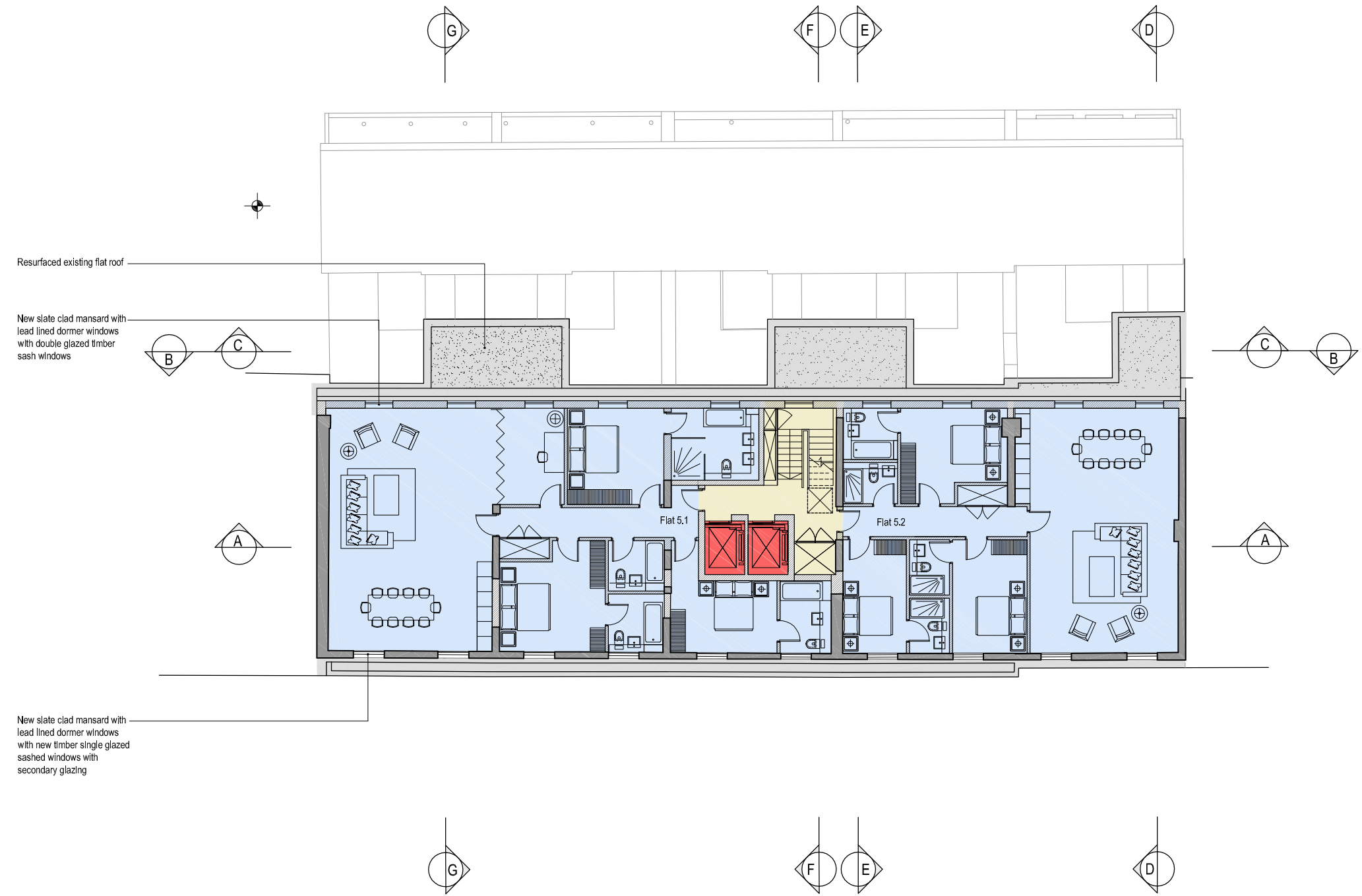


Do not scale from this drawing, except for town planning purposes.  
 Work to figured dimensions only.  
 This drawing is the property of Brimelow McSweeney Architects and copyright is reserved by them.  
 This drawing is issued on condition that it is not copied, used or disclosed by or to any unauthorised person without the prior written consent of Brimelow McSweeney Architects.  
 The areas on the drawing have been measured directly from a CAD drawing and have no tolerances added or subtracted.  
 The areas have been calculated in accordance with the Code of Measuring Practice, 6th Edition (2007) using the stated options N/A, G/A, GEA. They are approximate and relate to the likely areas of the building at the current state of the design. Any decisions to be made on the basis of these predictions, whether as to project viability, pre-felling, lease agreements and the like, should make allowance for the following:

- Design development
- Accurate site survey, site levels and dimensions need to be fully evaluated
- Allowances for construction methods and building tolerances.
- Local authority consents

rev	date	drawn by	chkd	description
/	22.09.14	SPD	SH	FIRST ISSUE
A	20.03.15	RK	SH	Minor Updates
B	27.03.15	RK	SH	Annotations Added and Address Corrected
C	08.05.15	RK	SH	Minor Amendments
D	09.12.15	RK	SH	Minor Amendments




Resurfaced existing flat roof

New slate clad mansard with lead lined dormer windows with double glazed timber sash windows

New slate clad mansard with lead lined dormer windows with new timber single glazed sashed windows with secondary glazing

status **FOR PLANNING**

**BRIMELOW McSWEENEY ARCHITECTS**   
 28 Great Queen Street, Covent Garden, London WC2B 5EL  
 tel: 020 7631 7835 - fax: 020 7631 7839 - email: admin@bm-architects.co.uk

project  
**35-39 Leinster Gardens  
 London W2 3AN**

file  
**Proposed Fifth Floor Plan**

scale	date	drawn
1:200@A3	26-09-14	SPD

drawing no.	revision
<b>1422-1126</b>	<b>D</b>

