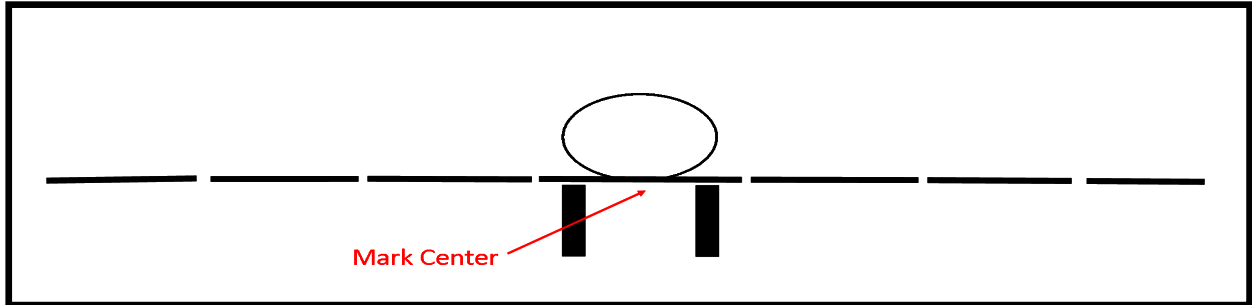




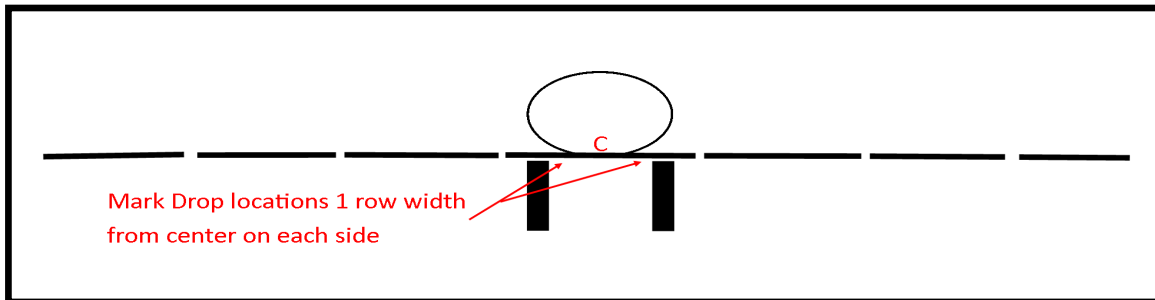
Prep: Make sure your primary boom sections are folded out exactly to 90 degrees a few degrees off will change the position of the drop drastically when using a tape measure from center.



MARK CENTER

Step 1: Find the center of the sprayer and mark it as center with a “C” if you are going every other row you will not have a drop in the center but you will have one a row width to either side.

Note: The simplest way is to count nozzle bodies and you can measure between the tires and or from end to end on the center boom in order to confirm center.



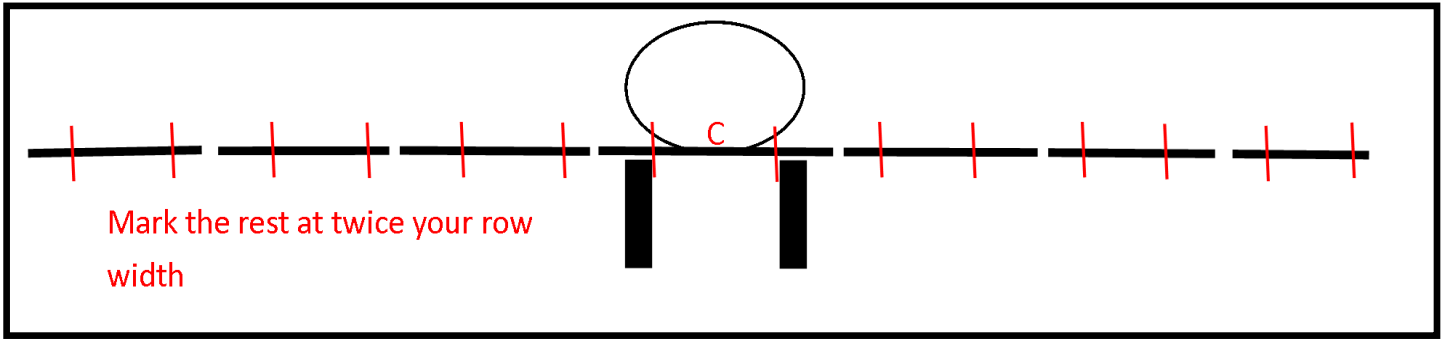
MARK DROPS LEFT AND RIGHT OF CENTER

Center + (1 X Row Width)

Step 2: Measure out from center a single row width each way and mark the boom.

Note: At this point you should have 2 drop locations marked twice your row width apart with a center mark in between.

[Click HERE for an example video.](#)

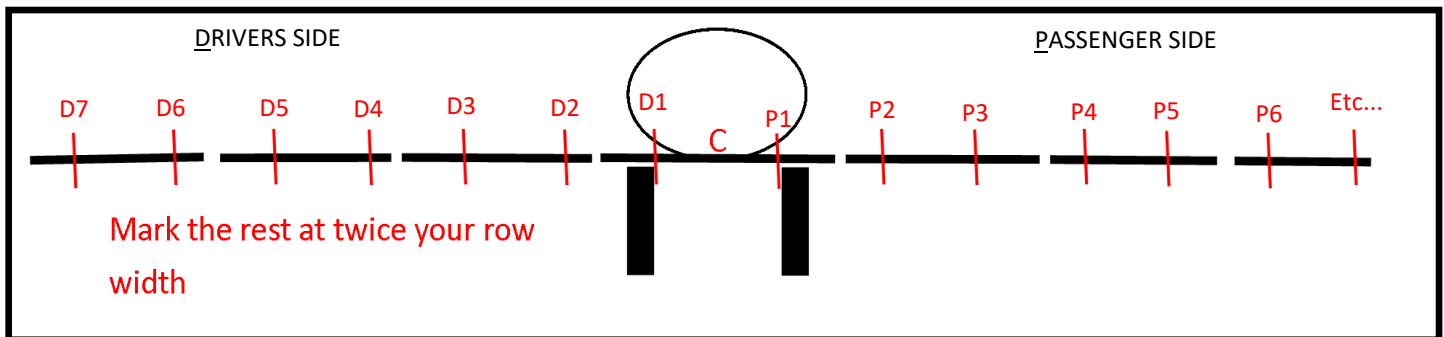


MARK THE REST OF THE BOOM

marked drop locations + (2 X Row Width)

Step 3: Continue marking the rest of the boom on (2 X row) width increments. If the wet boom is in good shape and properly aligned you can generally count nozzle bodies but check for accuracy with a tape.

Note: At this point you should have all drop locations marked .



NUMBER YOUR DROP LOCATIONS

Step 4: Use a chalk marker to number each drop location out from center and note P or D for drivers or passenger side.

EVALUATE DROP LOCATIONS

Step 5: Examine each of the marked locations. Keep in mind that the receivers will stay on when you remove the system so be sure they are not in the way of the nozzle body or spray pattern. The boom brackets are 3.75" wide. You will need room for the selected bracket on either side of your mark.

Keep spray pattern in mind. If the receiver is too close to your nozzle body it will need to be removed or you will need to add an offset or sub boom.

DON'T FORGET ABOUT THE SADDLE THAT YOUR BOOM RESTS IN WHEN FOLDED FOR TRANSPORT!!! (If a drop needs to be positioned where the saddle is you will need an offset.

Notes

Use the notes sheets to lay out details for us that are not easily conveyed in the video.

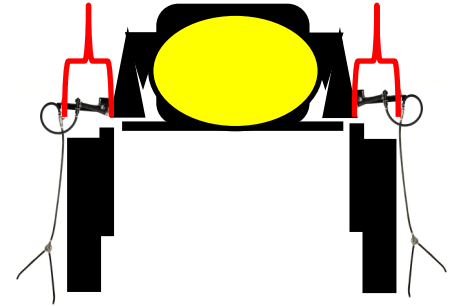
Take a Video with your Smart Phone

Step 5: Take a detailed video making sure you can see the markings on the boom and look under and over the boom. Narrating where you are on the boom the dimensions for U-bolts and explaining any other concerns is appreciated.

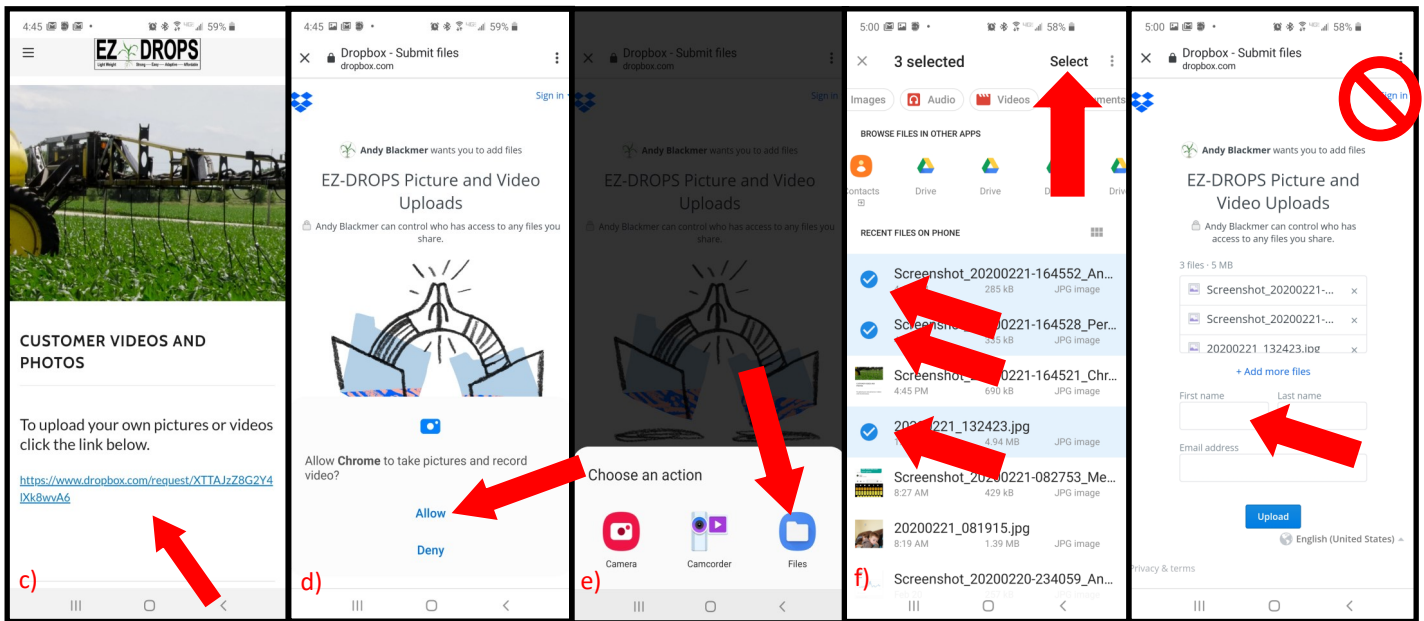
Step 6: Take a second video of it folded and folding if possible. I will need to know the distance out from the boom to the outside of the wheel when they are set for row crop operation.

NOTE: If you have steering axles and want to fold from the cab, I will need to have a shot that includes where the drop or drops over them need to be (if they are dead center over the wheel they don't need set out as far).

Please note this length on the worksheet at the end.

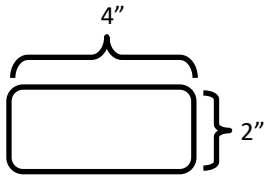


Upload to the EZ-Drops Website



- Go to www.ez-drops.com on the device that you recorded the video on.
- Navigate to the downloads page
- Click the link for customer videos and photos
- Grant permission
- Select from files or gallery
- Hold your finger on the files you want to select, once you have selected them all press "select" at the top of the screen.
- Finally Type your name and email in the blanks (no need to log in) and press "UPLOAD"
- Shoot me a text that they are uploaded.

EXAMPLE P3



Offset: 13" 18" or more " _____ "

Direct peg mount or receiver: Receiver for extension

Notes/additional drawing: need to extend 26" for wheels

Position: _____

Offset: 13" 18"

Direct peg mount or receiver:

Notes/additional drawing:

Position: _____

Offset: 13" 18"

Direct peg mount or receiver:

Notes/additional drawing:

Position: _____

Offset: 13" 18"

Direct peg mount or receiver:

Notes/additional drawing:

Position _____

Offset: 13" 18"

Direct peg mount or receiver:

Notes/additional drawing:

Position: _____

Offset: 13" 18"

Direct peg mount or receiver:

Notes/additional drawing:

Position: _____

Offset: 13" 18"

Direct peg mount or receiver:

Notes/additional drawing:

Position: _____

Offset: 13" 18"

Direct peg mount or receiver:

Notes/additional drawing:

Position _____

Offset: 13" 18"

Direct peg mount or receiver:

Notes/additional drawing:

Position: _____

Offset: 13" 18"

Direct peg mount or receiver:

Notes/additional drawing:

Position: _____

Offset: 13" 18"

Direct peg mount or receiver:

Notes/additional drawing:

Position: _____

Offset: 13" 18"

Direct peg mount or receiver:

Notes/additional drawing:

Position _____

Offset: 13" 18"

Direct peg mount or receiver:

Notes/additional drawing:

Position: _____

Offset: 13" 18"

Direct peg mount or receiver:

Notes/additional drawing:

Position: _____

Offset: 13" 18"

Direct peg mount or receiver:

Notes/additional drawing:

Position: _____

Offset: 13" 18"

Direct peg mount or receiver:

Notes/additional drawing:

Position _____

Offset: 13" 18"

Direct peg mount or receiver:

Notes/additional drawing:

Position: _____

Offset: 13" 18"

Direct peg mount or receiver:

Notes/additional drawing:

Position: _____

Offset: 13" 18"

Direct peg mount or receiver:

Notes/additional drawing:

Position: _____

Offset: 13" 18"

Direct peg mount or receiver:

Notes/additional drawing:

Position _____

Offset: 13" 18"

Direct peg mount or receiver:

Notes/additional drawing:

Position: _____

Offset: 13" 18"

Direct peg mount or receiver:

Notes/additional drawing:

Position: _____

Offset: 13" 18"

Direct peg mount or receiver:

Notes/additional drawing:

Position: _____

Offset: 13" 18"

Direct peg mount or receiver:

Notes/additional drawing:

Position _____

Offset: 13" 18"

Direct peg mount or receiver:

Notes/additional drawing:

Position: _____

Offset: 13" 18"

Direct peg mount or receiver:

Notes/additional drawing:

Position: _____

Offset: 13" 18"

Direct peg mount or receiver:

Notes/additional drawing:

Position: _____

Offset: 13" 18"

Direct peg mount or receiver:

Notes/additional drawing:

Position _____

Offset: 13" 18"

Direct peg mount or receiver:

Notes/additional drawing:

Position: _____

Offset: 13" 18"

Direct peg mount or receiver:

Notes/additional drawing:

Position: _____

Offset: 13" 18"

Direct peg mount or receiver:

Notes/additional drawing:

Position: _____

Offset: 13" 18"

Direct peg mount or receiver:

Notes/additional drawing:

Position _____

Offset: 13" 18"

Direct peg mount or receiver:

Notes/additional drawing:

Position: _____

Offset: 13" 18"

Direct peg mount or receiver:

Notes/additional drawing:

Position: _____

Offset: 13" 18"

Direct peg mount or receiver:

Notes/additional drawing:

Position: _____

Offset: 13" 18"

Direct peg mount or receiver:

Notes/additional drawing:

Position _____

Offset: 13" 18"

Direct peg mount or receiver:

Notes/additional drawing:

Position: _____

Offset: 13" 18"

Direct peg mount or receiver:

Notes/additional drawing:

Position: _____

Offset: 13" 18"

Direct peg mount or receiver:

Notes/additional drawing:

Position: _____

Offset: 13" 18"

Direct peg mount or receiver:

Notes/additional drawing:

Position _____

Offset: 13" 18"

Direct peg mount or receiver:

Notes/additional drawing:

Position: _____

Offset: 13" 18"

Direct peg mount or receiver:

Notes/additional drawing:

Position: _____

Offset: 13" 18"

Direct peg mount or receiver:

Notes/additional drawing:

Position: _____

Offset: 13" 18"

Direct peg mount or receiver:

Notes/additional drawing:

Position _____

Offset: 13" 18"

Direct peg mount or receiver:

Notes/additional drawing:

Position: _____

Offset: 13" 18"

Direct peg mount or receiver:

Notes/additional drawing:

Position: _____

Offset: 13" 18"

Direct peg mount or receiver:

Notes/additional drawing:

Position: _____

Offset: 13" 18"

Direct peg mount or receiver:

Notes/additional drawing: