

NW PORTLAND / PEARL DISTRICT DEVELOPMENT MAP

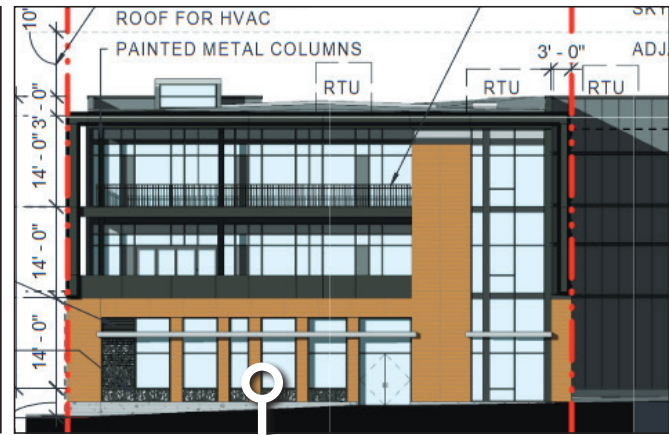
JAPANESE GARDEN

Portland Japanese Garden is preparing to convert the former Salvation Army White Shield Home in Wilamette Heights into an auxiliary campus for training sessions, lectures and workshops for landscapers. The property includes part of the main building erected before the Salvation Army acquired the site before World War I.



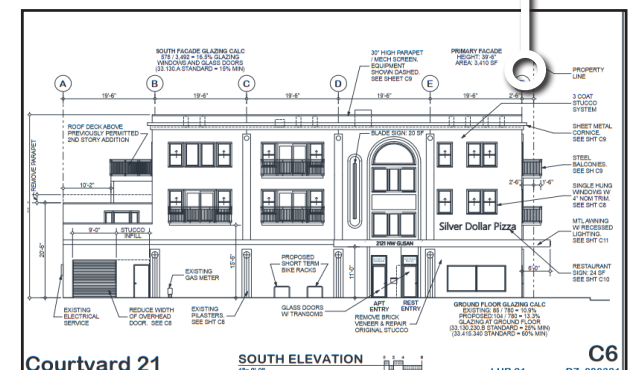
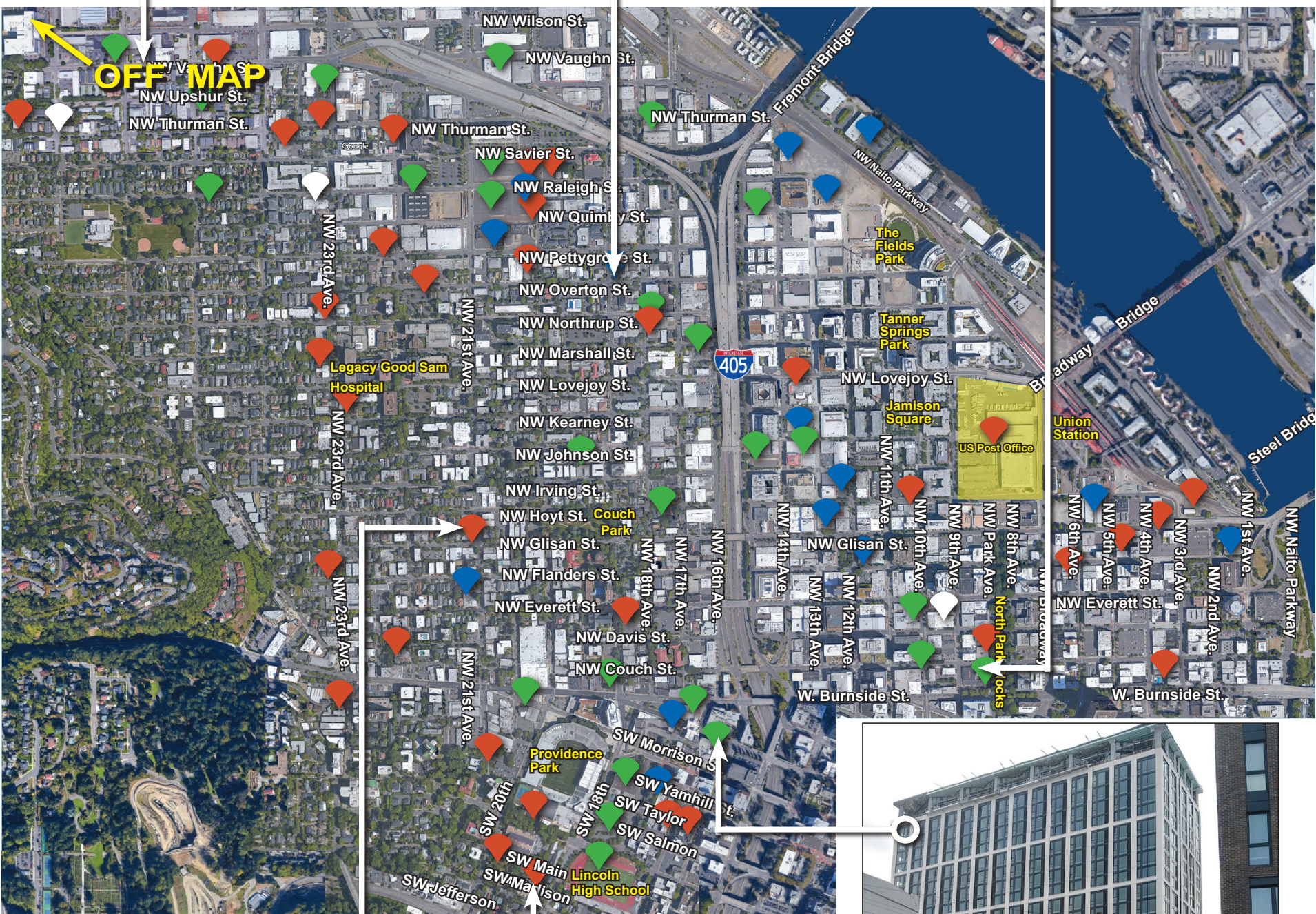
DOVE LEWIS

The Bureau of Development Services is seeking public comments by Jan. 4 on a three-story commercial building with underground parking with frontages on the 1900 block of Northwest Overton and Pettygrove streets. It is in an area covered by design review standards, which will be applied administratively in this case.



CHOICE CAMBRIA HOTEL

A virtual public hearing before the Design Commission is tentatively scheduled for Jan 27 for a six-story hotel necessitating the demolition of two early 20th century brick buildings. The design has been heavily criticized by the Pearl District Neighborhood Association and the Design Commission for failing to meet high expectations due to its prominent location on the North Park Blocks.



SILVER DOLLAR PIZZA

The Portland Landmarks Commission will hold a hearing Jan. 24 on a proposal to add two floors of apartments above a one-story 1940 commercial building at Northwest 21st and Glisan streets. The structure must satisfy design standards due to its location in the Alphabet Historic District.



MODERA MAIN

After a three-hour hearing, the City Council rejected the Goose Hollow Foothills League's appeal of Modera Main, a 17-story residential tower bordered by Southwest 19th, 20th, Main and Madison streets. The property is owned by the Multnomah Athletic Club, which is trading the land for 225 underground parking stalls for members' use below the structure.



ALTA ART TOWER

Construction of the 21-story ART Tower at 1510 SW Alder St. nears completion after two years in the works. It will have 314 apartment units and three levels of below-grade parking. Rents will start at \$1,800 a month and peak at \$8,410.

Proposed Under Review In Construction Other

For an interactive and continually updated version of this map, visit:
NextPortland.com
Also see the development map maintained by the Goose Hollow Foothills League:
goosehollow.org/images/GooseHollowDevelopmentMap.pdf