

MINI-SPLIT - FAN COIL UNIT SCHEDULE and MINI-SPLIT - HEAT PUMP CONDENSING UNIT SCHEDULE tables with columns for TAG, MFG, MODEL NUMBER, TYPE, COOLING, HEATING, ELECTRICAL, and COMMENTS. Includes general notes and key notes.

PACKAGED ROOFTOP HEAT-PUMP UNIT SCHEDULE table with columns for TAG, MANUFACTURER, MODEL NUMBER, NOMINAL CAPACITY, COOLING, REFRIGERANT, HEATING, SUPPLY FAN, ELECTRICAL, POWER EXHAUST, FILTER, UNIT, OPER, and REMARKS. Includes general notes and key notes.

DIFFUSER AND GRILLE SCHEDULE table with columns for TAG, MANUFACTURER, MODEL NUMBER, DESCRIPTION, FACE TYPE, FACE SIZE (INCHES), COLOR, and COMMENTS. Includes general notes and key notes.

EXHAUST FAN SCHEDULE table with columns for TAG, MANUFACTURER, MODEL NUMBER, LOCATION, DISCH, TYPE, DRIVE, AIR FLOW (CFM), SP (IN.WG.), FAN RPM, MAX MTR RPM, ELECTRICAL, UNIT SIZE (L*W*H"), OPER. WT. (LBS), and REMARKS. Includes general notes.

VENTILATION TABLE - BY SPACE table with columns for ROOM NAME, UNIT TAG, AREA (SF), OCCUPANCY, MAX COOLING AIR SUPPLY (CFM), SPACE CATEGORY, AIR SUPPLY TYPE, PEOPLE OUTDOOR AIR RATE (Rp), AREA OUTDOOR AIR RATE (Ra), MIN OUTDOOR AIR CFM, VENTILATION RATE (CFM/SF), MIN OUTDOOR R AIR CFM, CFM PER OCCUPAN CY, MIN OUTDOOR AIR CFM, and O.A. DESIGNED.

Authority Approval stamp for the State Architect, including identification number, reviewed for items, and date.



Contact information for CSDA Design Group: 889 N. Douglas Street, Suite 100, El Segundo, CA 90245. Phone: 310.821.9200. Website: www.csdesigngroup.com

Architect Stamp area for the project.

Consultant Information: TX ENGINEERING, 2866 Birch Ln., Pomona, CA 91767, (213) 503-2332.

Consultant Stamp from TX Engineering.

Project Owner Information: CORONA NORCO UNIFIED SCHOOL DISTRICT, 2820 Clark Ave., Norco, CA 92860, (951) 736-5000.

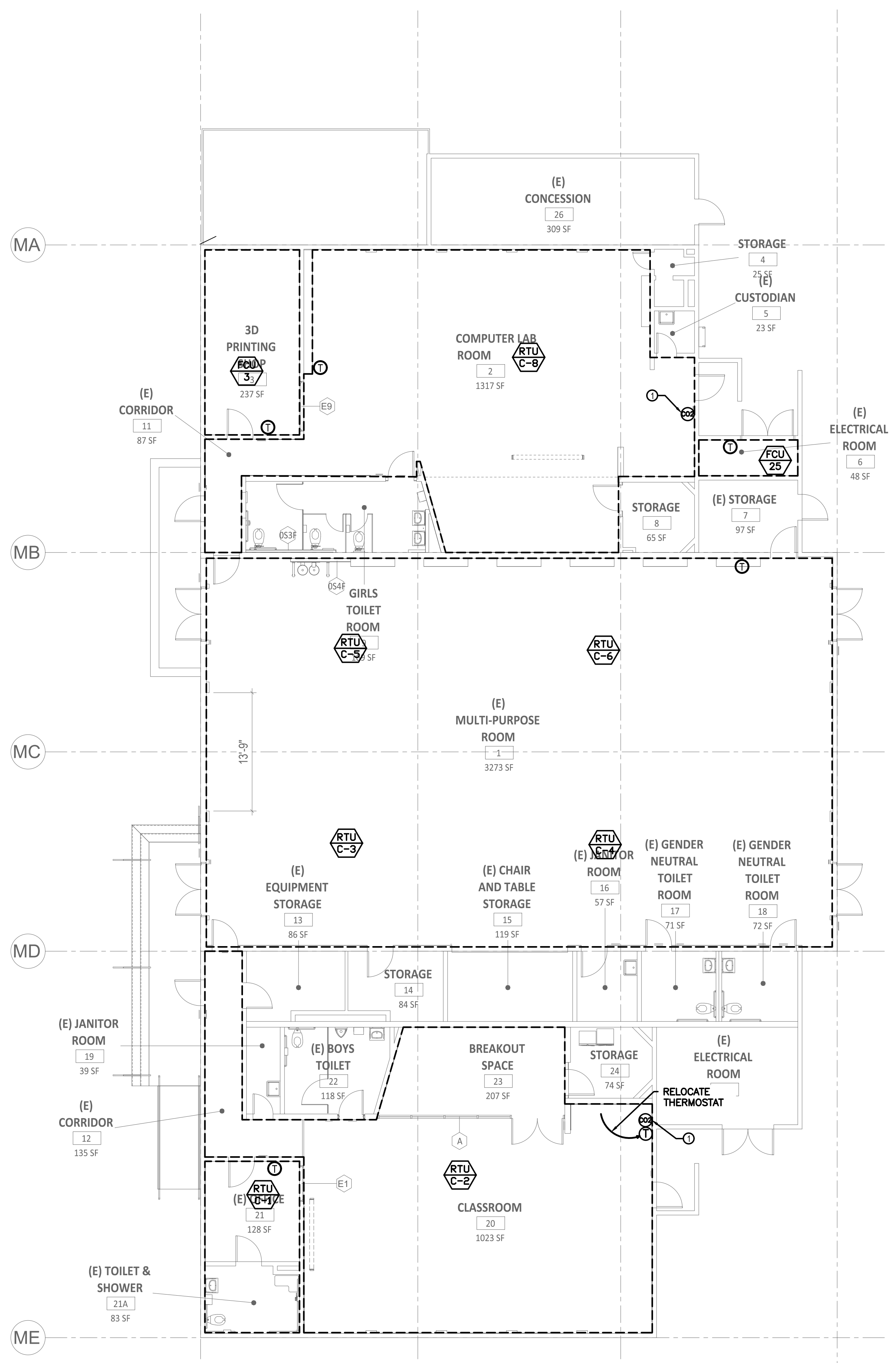
Project Name: CORONA FUNDAMENTAL INTERMEDIATE SCHOOL - MPR RENOVATION, 1230 S Main St., Corona, CA 92882.

Revision table with columns for MARK, DATE, and DESCRIPTION, showing changes to the drawings.

Project No: 22063.01

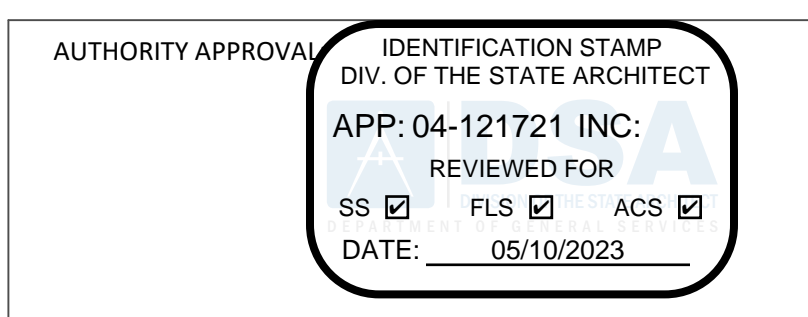
Sheet Title: MECHANICAL SCHEDULES

Sheet No: M-010



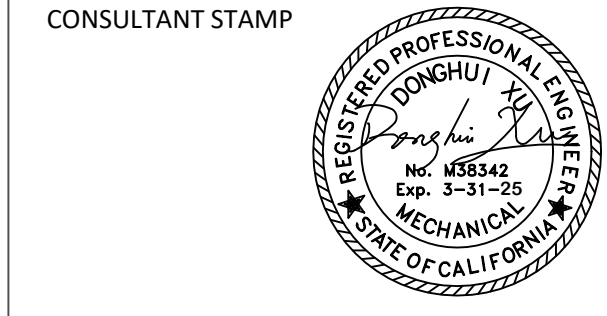
KEY NOTES:


1. PROVIDE NEW CO2 SENSOR, ECONOMIZER AND POWER EXHAUST TO EXISTING RTU.



CSDA DESIGN GROUP
 LISTEN COLLABORATE CREATE
 889 N. DOUGLAS STREET, SUITE 100
 EL SEGUNDO, CA 90245
 [T]: 310.821.9200
 www.csdadesigngroup.com

CONSULTANT:
TX ENGINEERING
 2866 BIRCH LN.
 POMONA, CA 91767
 (213) 503-2332



PROJECT OWNER:
CORONA NORCO UNIFIED SCHOOL DISTRICT

 2820 Clark Ave, Norco, CA 92860
 (951) 736-5000

PROJECT NAME:
**CORONA FUNDAMENTAL
 INTERMEDIATE SCHOOL - MPR
 RENOVATION**
 1230 S Main St, Corona, CA 92882

MARK	DATE	DESCRIPTION
	12/19/2022	DSA SUBMITTAL
	03/24/2023	DSA BACK-CHECK

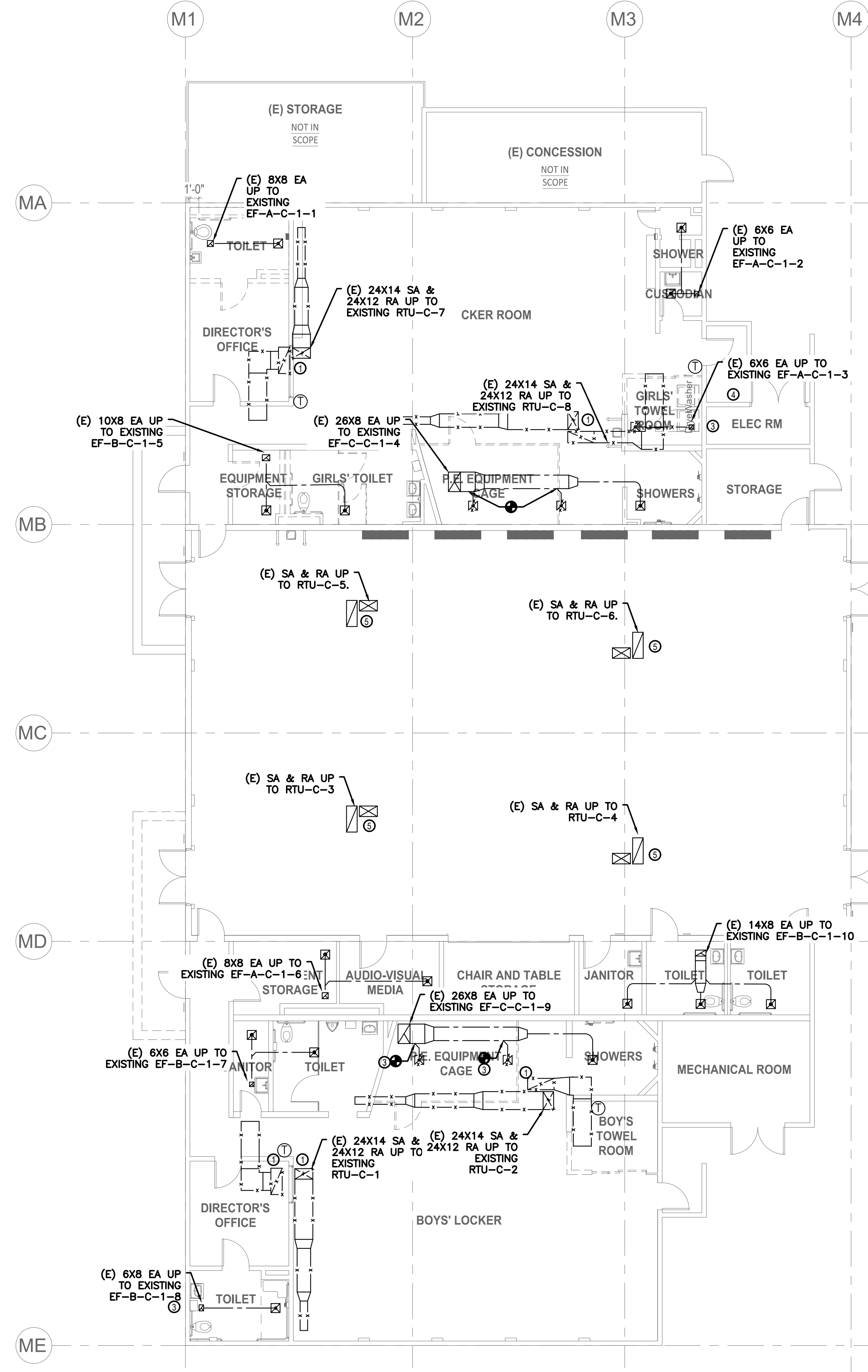
PROJECT NO.: **22063.01**

SHEET TITLE:
**MECHANICAL
 ZONING
 PLAN**

SHEET NO.: **M-101**

MECHANICAL FLOOR PLAN 1
 SCALE: 1/8" = 1'-0"

3/28/2023



SHEET NOTES:

- A. DEMOLISH DUCTWORK UP TO POINT OF DISCONNECT. CONFIRM WITH DISTRICT, SCHOOL, DESIGN TEAM PRIOR TO ANY DEMOLITION NOT SHOWN ON THE FLOOR PLAN.

KEY NOTES:

1. DEMOLISH EXISTING MECHANICAL UNIT, DUCTWORK, AND ITS ASSOCIATED ACCESSORIES SUCH AS THERMOSTAT.
2. NOT USED
3. DEMOLISH DUCTWORK UP TO POINT OF DISCONNECT. CAP AND SEAL OPENING
4. DEMOLISH DUCTWORK UP TO UNDERSIDE OF ROOF AND CAP FOR FUTURE
5. EXISTING DIFFUSER, GRILLE, DUCTWORK AND ITS ACCESSORIES TO REMAIN. CONTRACTOR TO CLEAN AND VERIFY CONDITION PRIOR TO RE-USE. PROVIDE CONNECTION TO NEW RTU.

AUTHORITY APPROVAL: IDENTIFICATION STAMP
 DIV. OF THE STATE ARCHITECT
 APP: 04-121721 INC.
 REVIEWED FOR: SS FLS ACS
 DATE: 05/10/2023

CSDA DESIGN GROUP

LISTEN COLLABORATE CREATE

889 N. DOUGLAS STREET, SUITE 100
 EL SEGUNDO, CA 90245
 [T]: 310.821.9200
 www.csdadesigngroup.com

ARCHITECT STAMP

CONSULTANT:

TX ENGINEERING

2866 BIRCH LN.
 POMONA, CA 91767
 (213) 503-2332

CONSULTANT STAMP

PROJECT OWNER:

CORONA NORCO UNIFIED SCHOOL DISTRICT



2820 Clark Ave, Norco, CA 92860
 (951) 736-5000

PROJECT NAME:

CORONA FUNDAMENTAL INTERMEDIATE SCHOOL - MPR RENOVATION

1230 S Main St, Corona, CA 92882

MARK DATE	DESCRIPTION
12/19/2022	DSA SUBMITTAL
03/24/2023	DSA BACK-CHECK

PROJECT NO.: **22063.01**

SHEET TITLE:
MECHANICAL DEMO PLAN

SHEET NO.: **M-111D**

SHEET NOTES:
A. PROVIDE DUCT LINER ON EXPOSED DUCTWORK. SEE SPEC FOR DUCT LINER SPECIFICATION.
B. PROVIDE REFRIGERANT PIPE SIZING PER MANUFACTURER'S RECOMMENDATIONS.
C. PROVIDE INSULATED DUCT ACCESS DOORS FOR ALL ACCESSORIES INSTALLED INSIDE DUCTWORK.
D. SEE DETAIL 1/M501 FOR DUCTED FCU DETAIL.
E. SEE DETAIL 5/M501 FOR DUCTWORK AND PIPING DETAIL.
F. SEE DETAIL 2/M501 FOR DUCT MOUNTED SUPPLY DIFFUSER DETAIL.

AUTHORITY APPROVAL: IDENTIFICATION STAMP
DIV. OF THE STATE ARCHITECT
APP: 04-121721 INC.
REVIEWED FOR:
SS FLS ACS
DATE: 05/10/2023

CSDA DESIGN GROUP

LISTEN COLLABORATE CREATE

889 N. DOUGLAS STREET, SUITE 100
EL SEGUNDO, CA 90245
[T]: 310.821.9200
www.csdadesigngroup.com

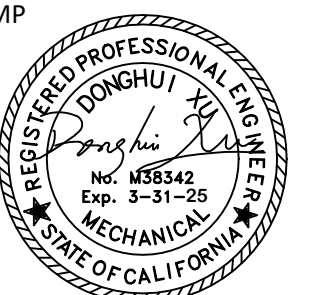
ARCHITECT STAMP

CONSULTANT:

TX ENGINEERING

2866 BIRCH LN.
POMONA, CA 91767
(213) 503-2332

CONSULTANT STAMP



PROJECT OWNER:

CORONA NORCO UNIFIED SCHOOL DISTRICT



2820 Clark Ave, Norco, CA 92860
(951) 736-5000

PROJECT NAME:

CORONA FUNDAMENTAL
INTERMEDIATE SCHOOL - MPR
RENOVATION

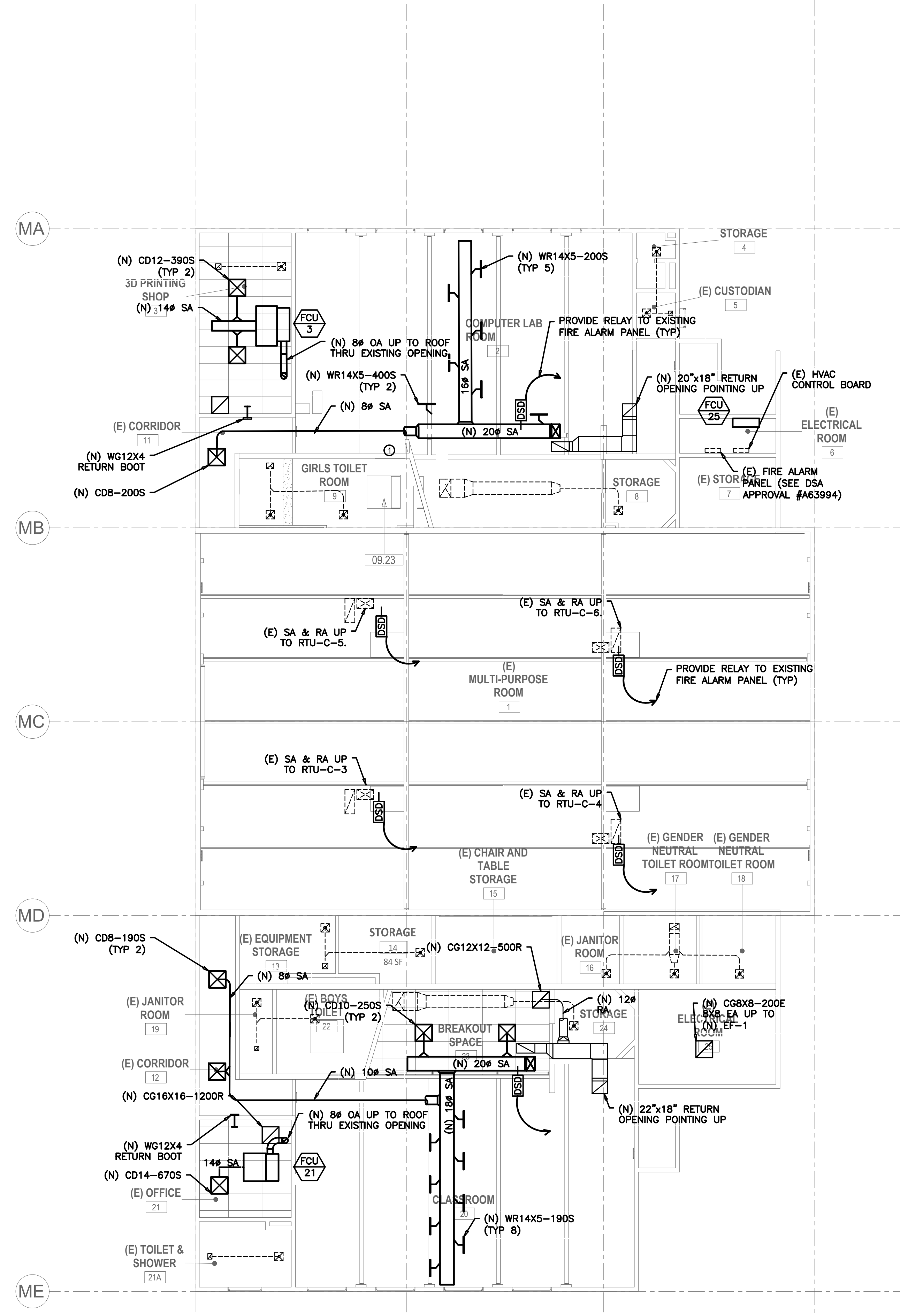
1230 S Main St, Corona, CA 92882

MARK DATE	DESCRIPTION
12/19/2022	DSA SUBMITTAL
03/24/2023	DSA BACK-CHECK

PROJECT NO.: 22063.01

SHEET TITLE:
**MECHANICAL
FLOOR
PLAN**

SHEET NO.:
M-111



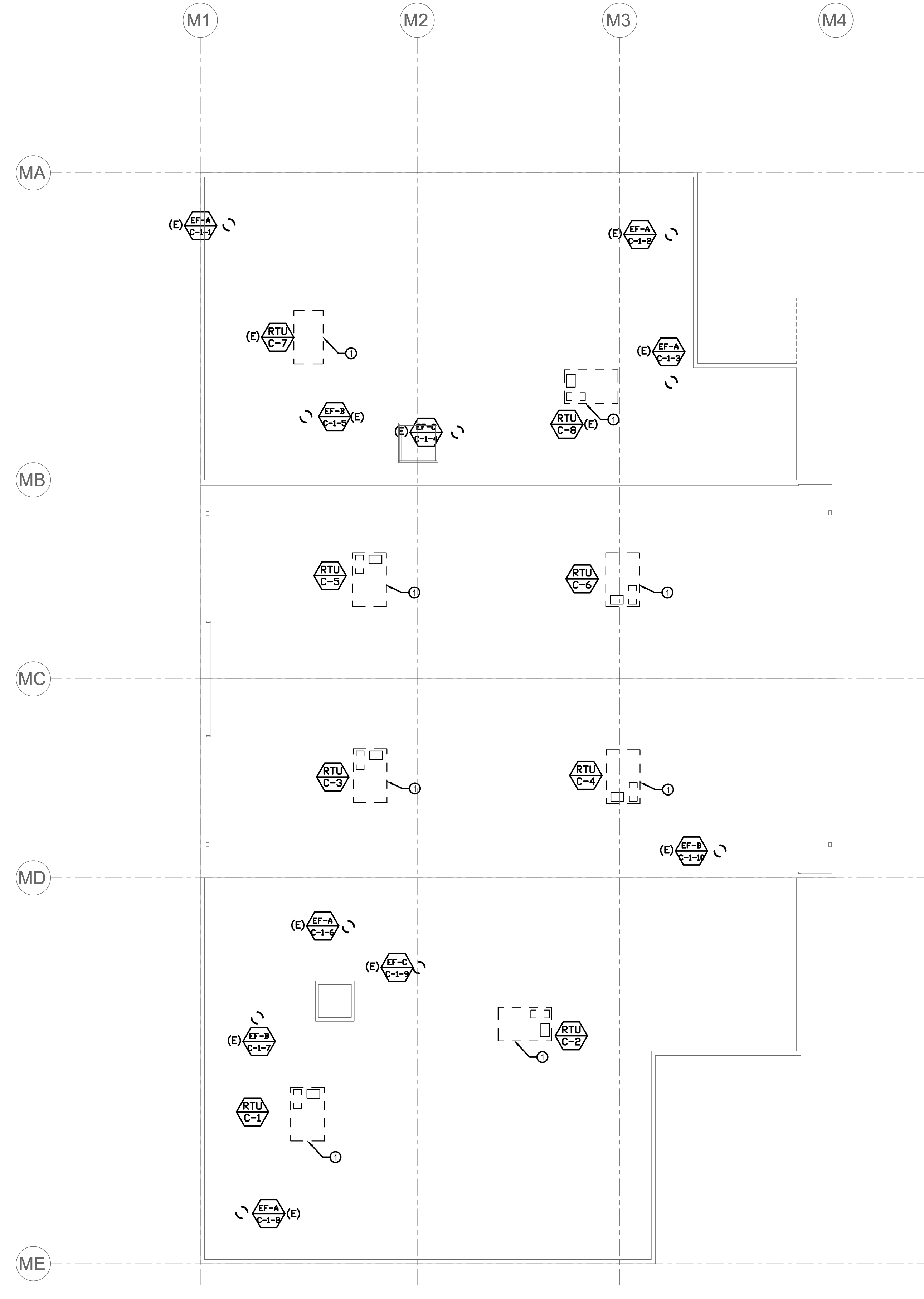
KEY NOTES:
1. PROVIDE DOOR LOUVER
2. CONTINUE DUCTWORK AND PROVIDE TRANSITION TO NEW EXHAUST GRILLE
3. LOCATED NEW I-VU NETWORK ROUTER.

MECHANICAL FLOOR PLAN-test **1**
SCALE: 1/8" = 1'-0"

3/29/2023

SHEET NOTES:

1. DEMOLISH EXISTING MECHANICAL UNIT AND CURBS. SEE M-111 FOR DUCTWORK DEMOLITION.



MECHANICAL ROOF DEMOLITION PLAN **1**

SCALE: 1/8" = 1'-0"

AUTHORITY APPROVAL IDENTIFICATION STAMP
DIV. OF THE STATE ARCHITECT
APP: 04-121721 INC:
REVIEWED FOR
SS FLS ACS
DATE: 05/10/2023



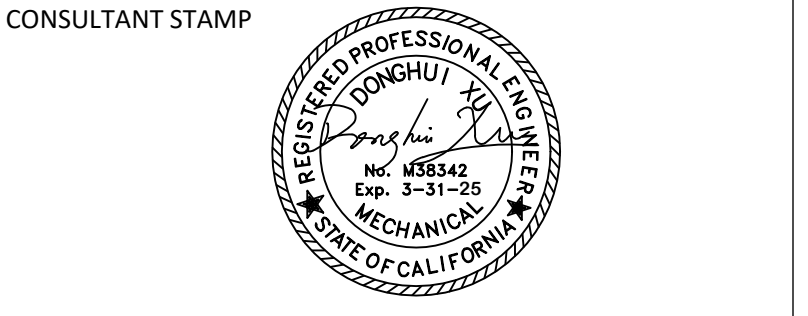
LISTEN COLLABORATE CREATE

889 N. DOUGLAS STREET, SUITE 100
EL SEGUNDO, CA 90245
(T): 310.821.9200
www.csdesigngroup.com

ARCHITECT STAMP



2866 BIRCH LN.
POMONA, CA 91767
(213) 503-2332



PROJECT OWNER:
CORONA NORCO UNIFIED SCHOOL DISTRICT



2820 Clark Ave, Norco, CA 92860
(951) 736-5000

PROJECT NAME:
**CORONA FUNDAMENTAL
INTERMEDIATE SCHOOL - MPR
RENOVATION**

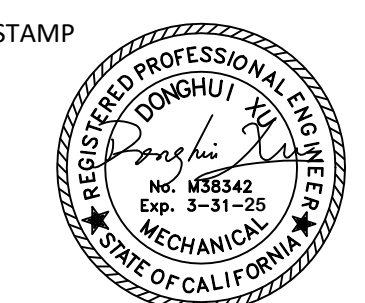
1230 S Main St, Corona, CA 92882

MARK	DATE	DESCRIPTION
	12/19/2022	DSA SUBMITTAL
	03/24/2023	DSA BACK-CHECK

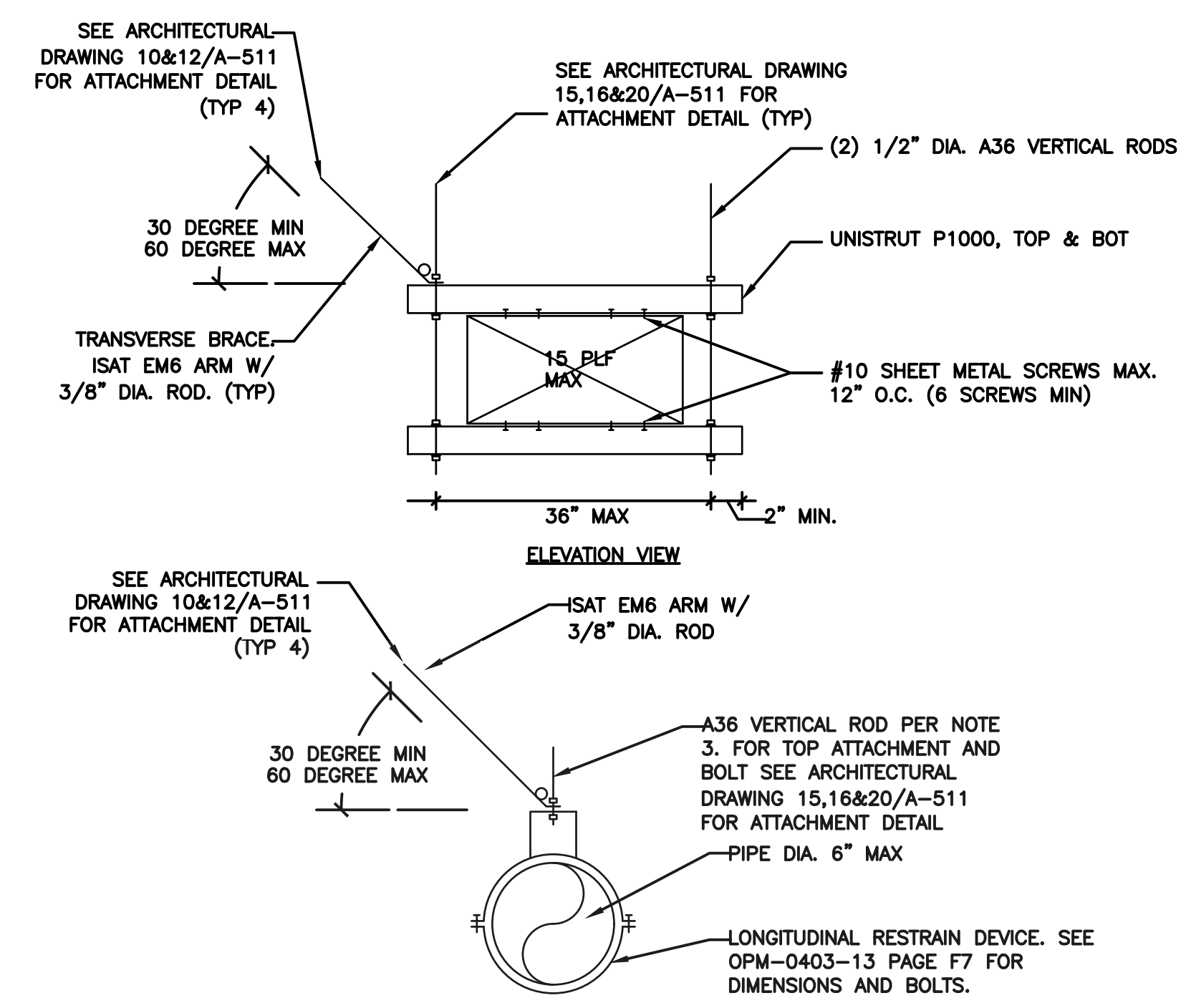
PROJECT NO.: **22063.01**

SHEET TITLE:
**MECHANICAL
ROOF
DEMO PLAN**

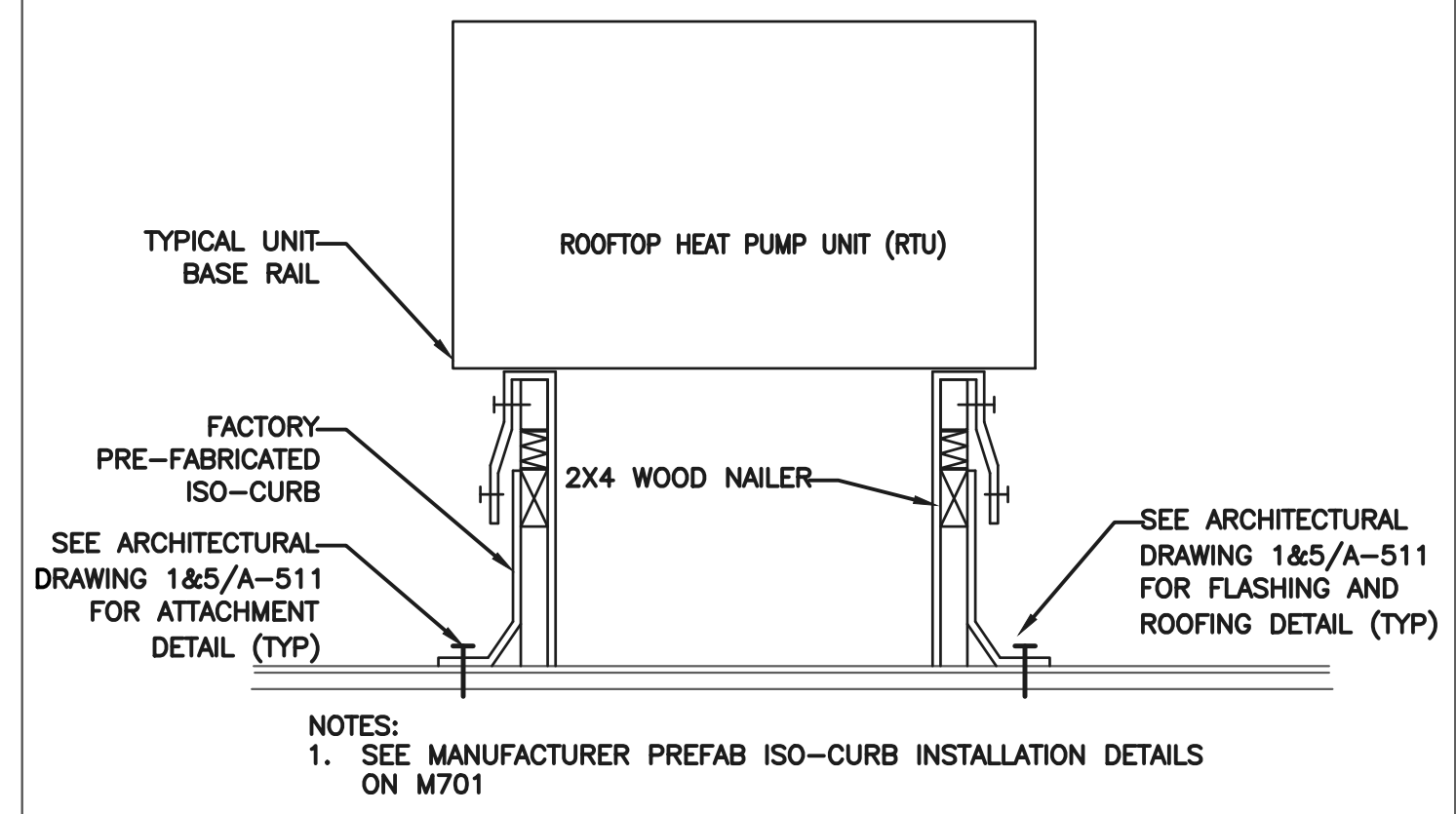
SHEET NO.:
M-112D



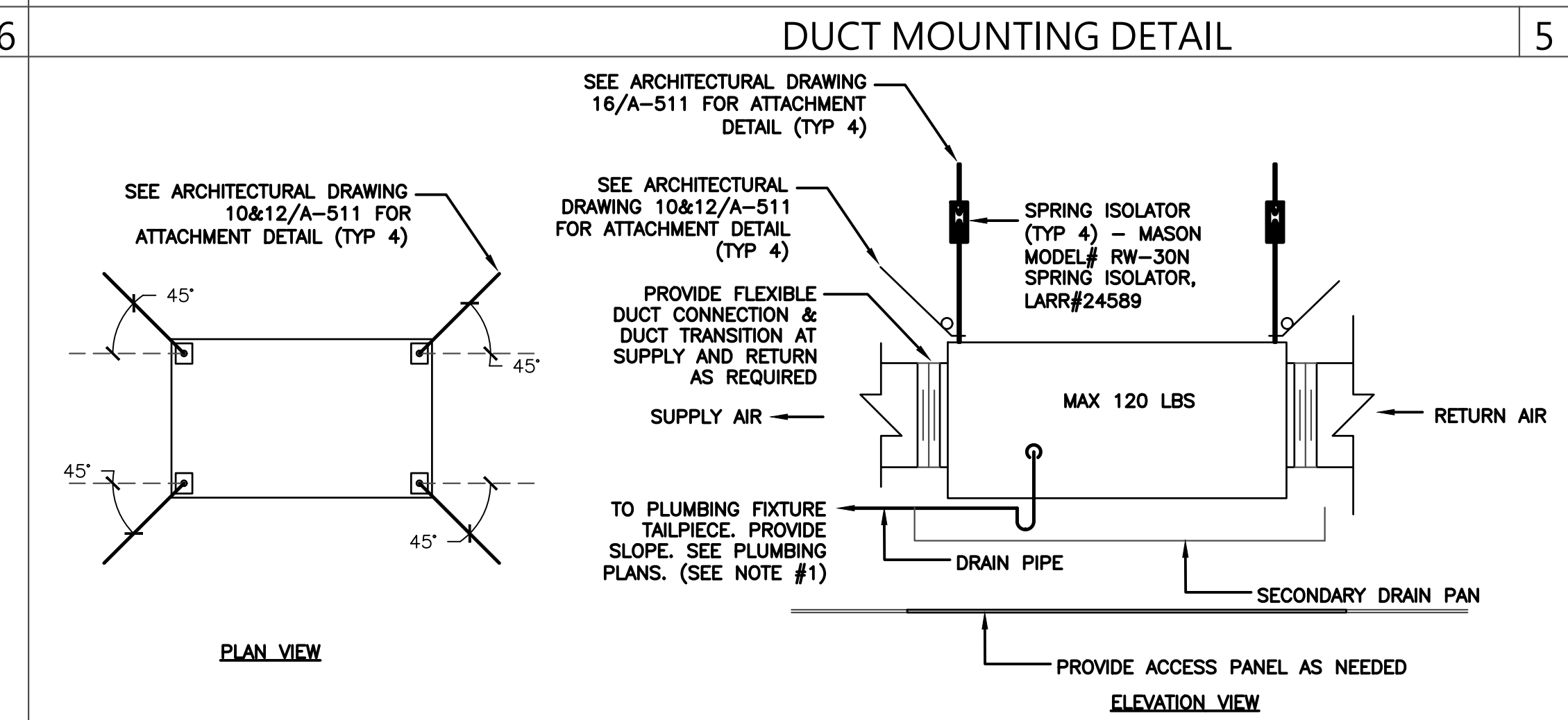
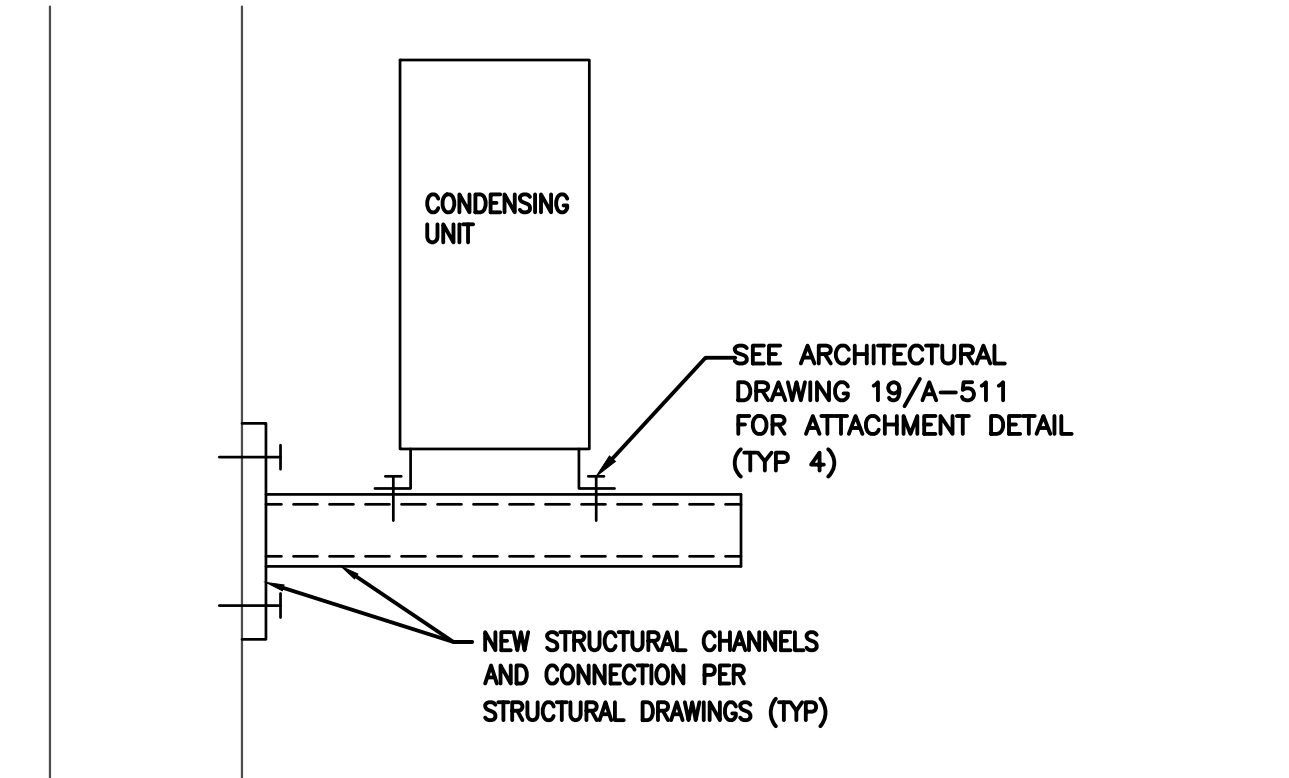
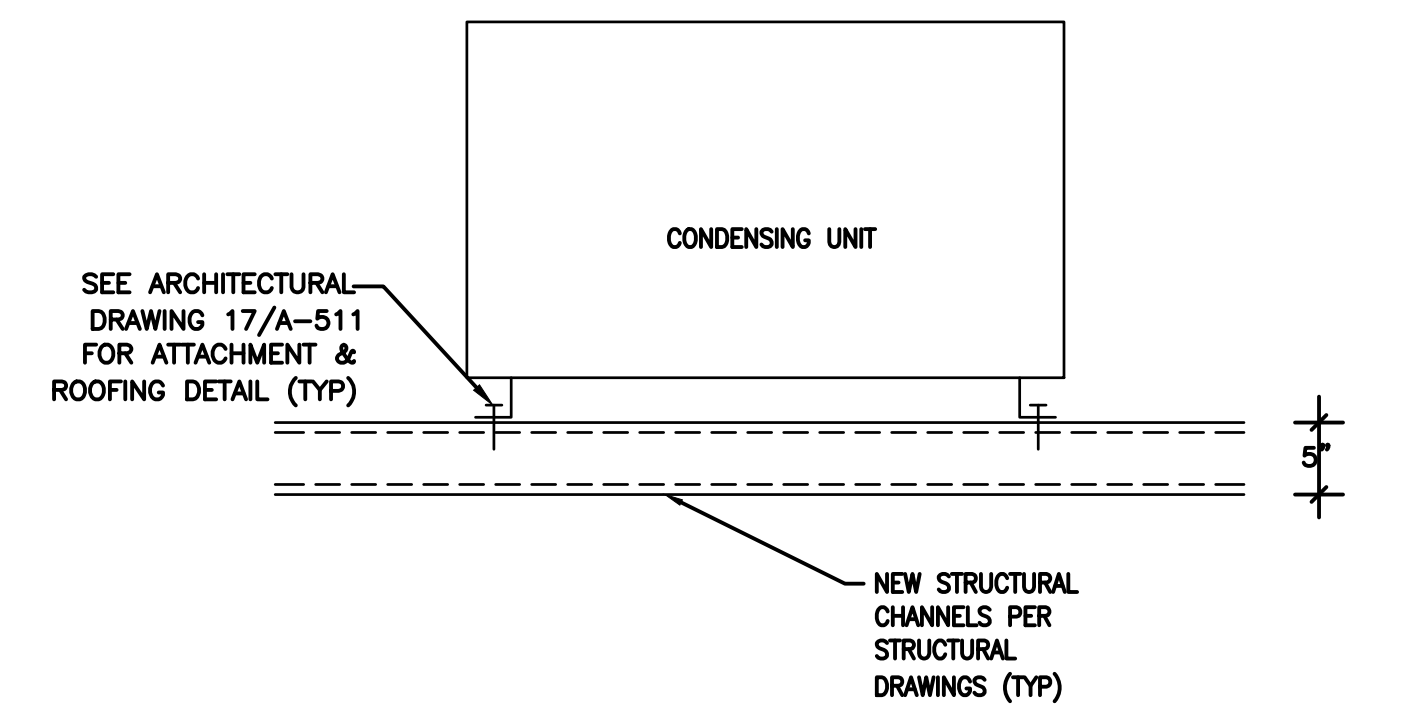
MARK	DATE	DESCRIPTION
	12/19/2022	DSA SUBMITTAL
	03/24/2023	DSA BACK-CHECK



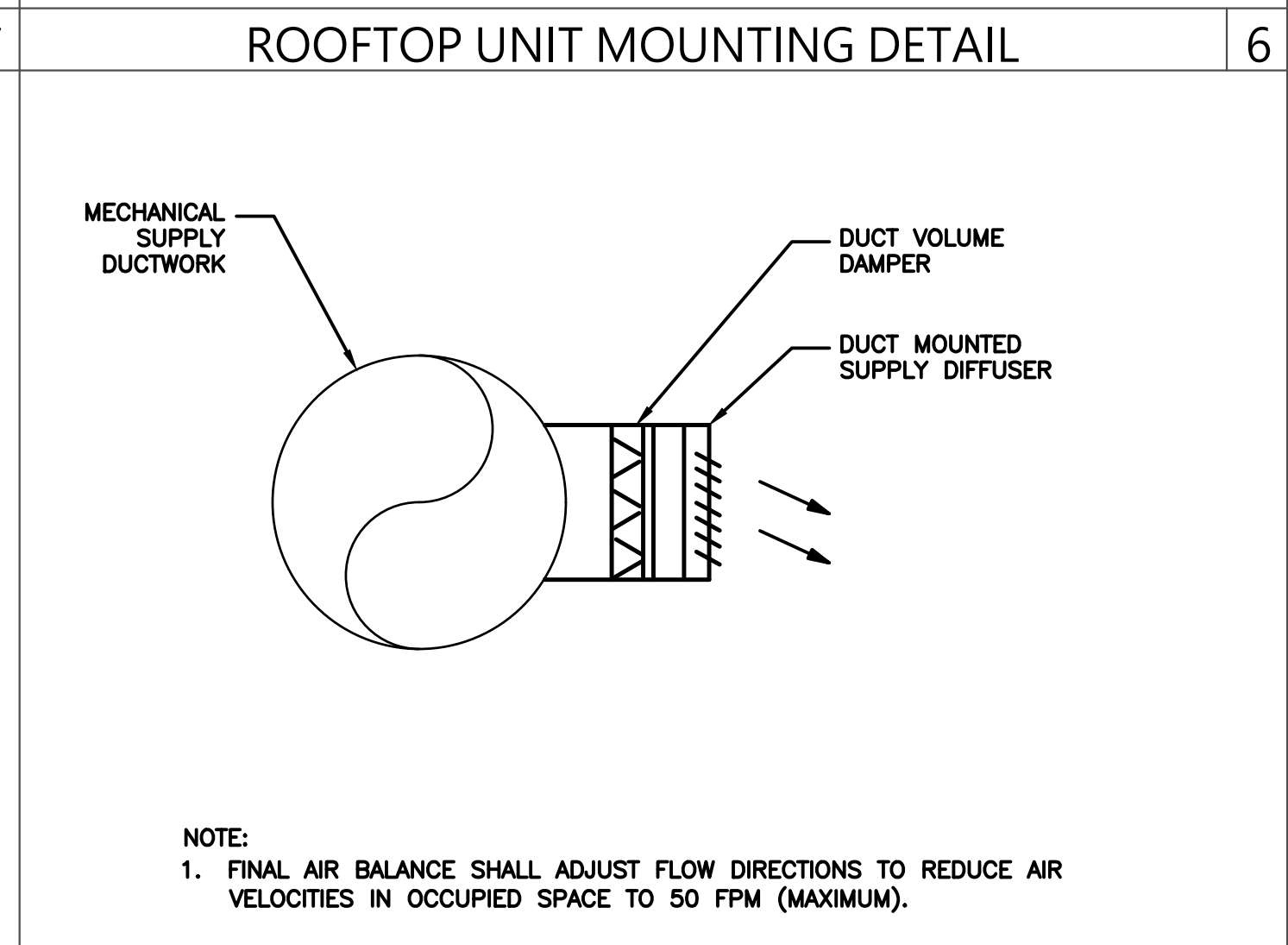
- NOTES:
 1. PROVIDE HANGERS AT EACH CHANGE OF DIRECTION AND MAXIMUM SPAN SHOULD BE 10'. ALTERNATE TRANSVERSE AND LONGITUDINAL BRACE AT EACH LOCATION.
 2. VERTICAL HANGERS AND DIAGONAL BRACES TO BE INSTALLER PER ISAT AND OPM-0403-13.
 3. PROVIDE 3/8" DIA. VERTICAL ROD FOR PIPE DIAMETER LESS THAN OR EQUAL TO 2". PROVIDE 1/2" DIA. VERTICAL ROD FOR PIPE DIAMETER BETWEEN 2-1/2" AND 3". PROVIDE 5/8" DIA. VERTICAL ROD FOR PIPE DIAMETERS LARGER OR EQUAL TO 5/8".



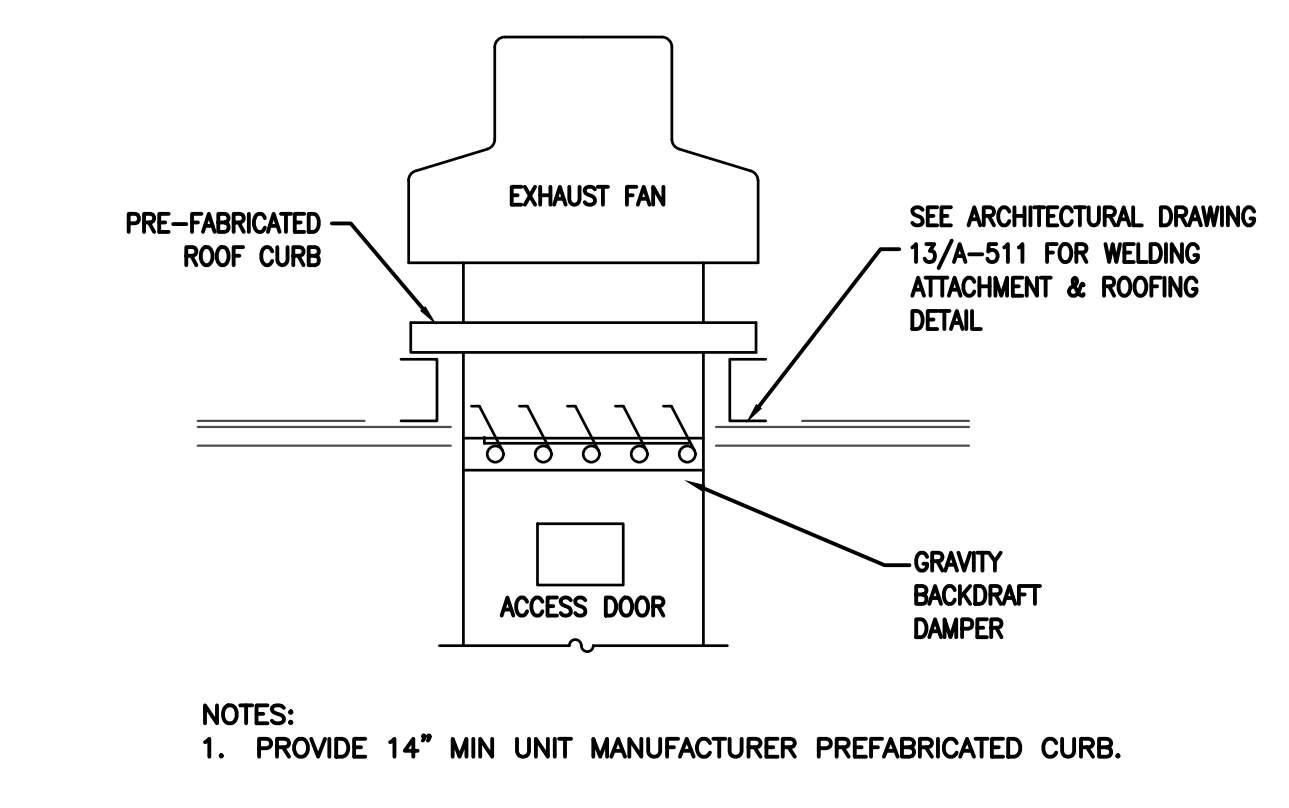
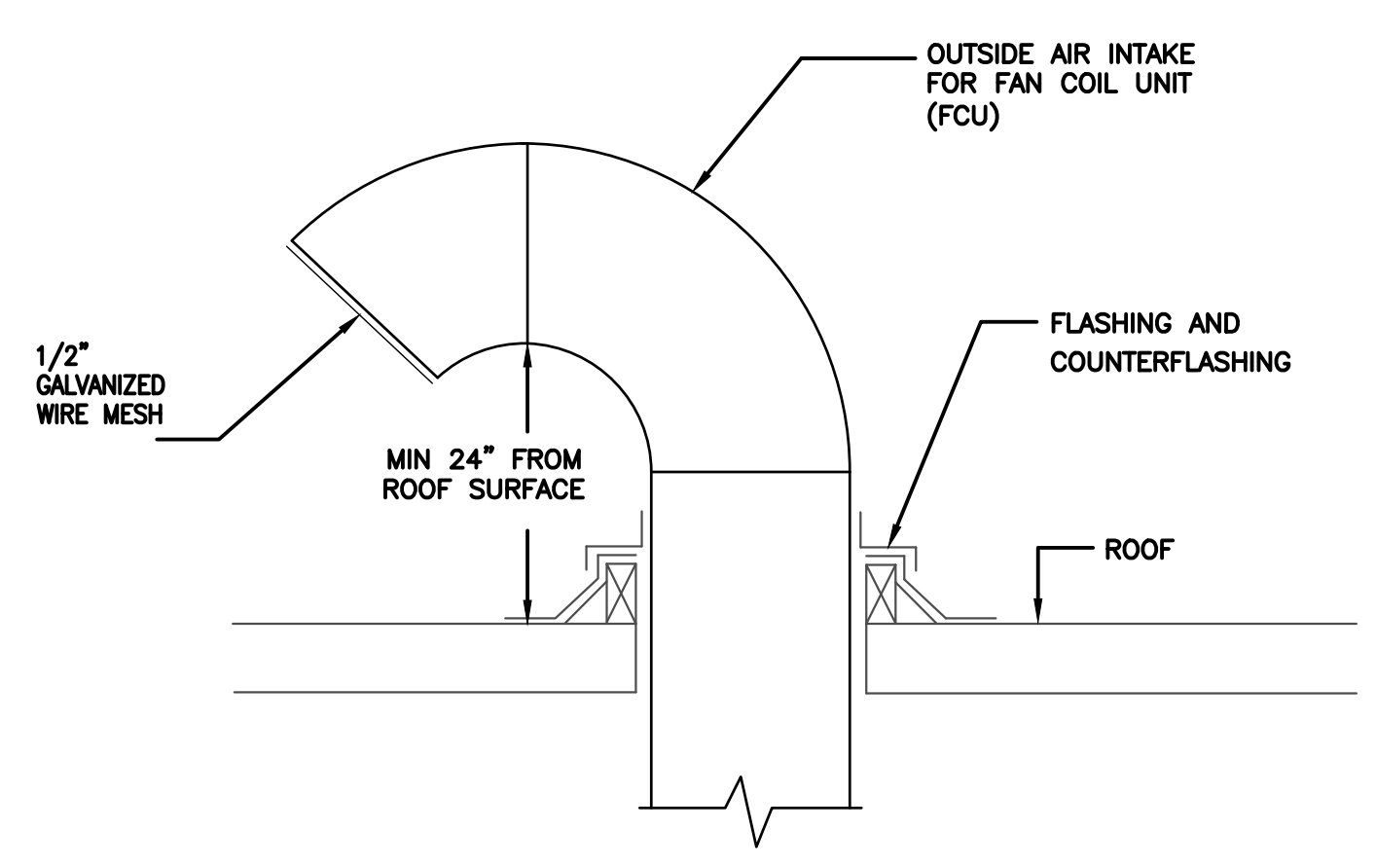
- NOTES:
 1. SEE MANUFACTURER PREFAB ISO-CURB INSTALLATION DETAILS ON M701



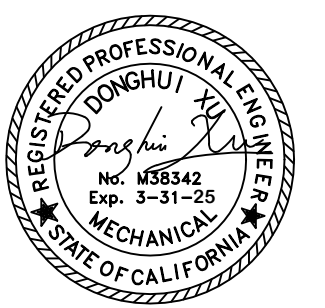
- NOTE:
 1. SEE PLUMBING DRAWINGS FOR CONDENSATE DRAIN SIZE AND ROUTING
 2. PROVIDE MOISTURE SENSOR
 3. PROVIDE CONDENSATE PUMP



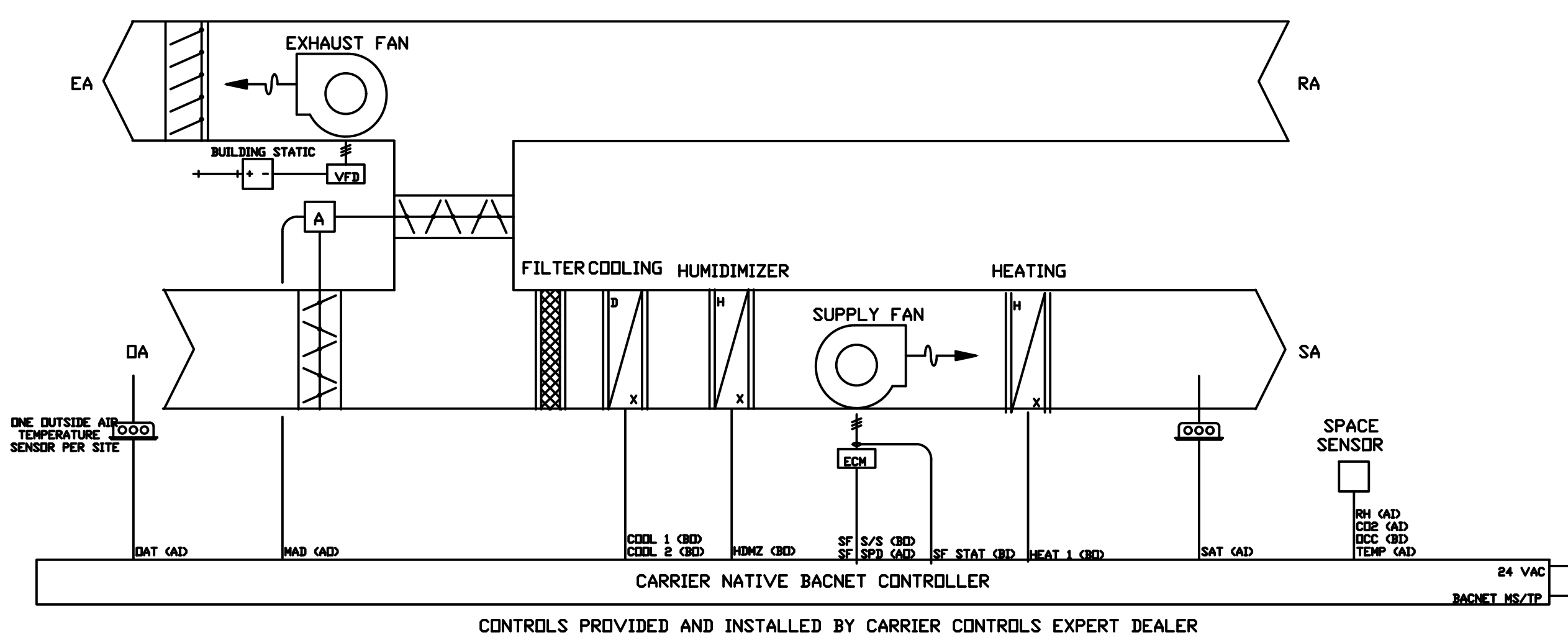
- NOTE:
 1. FINAL AIR BALANCE SHALL ADJUST FLOW DIRECTIONS TO REDUCE AIR VELOCITIES IN OCCUPIED SPACE TO 50 FPM (MAXIMUM).



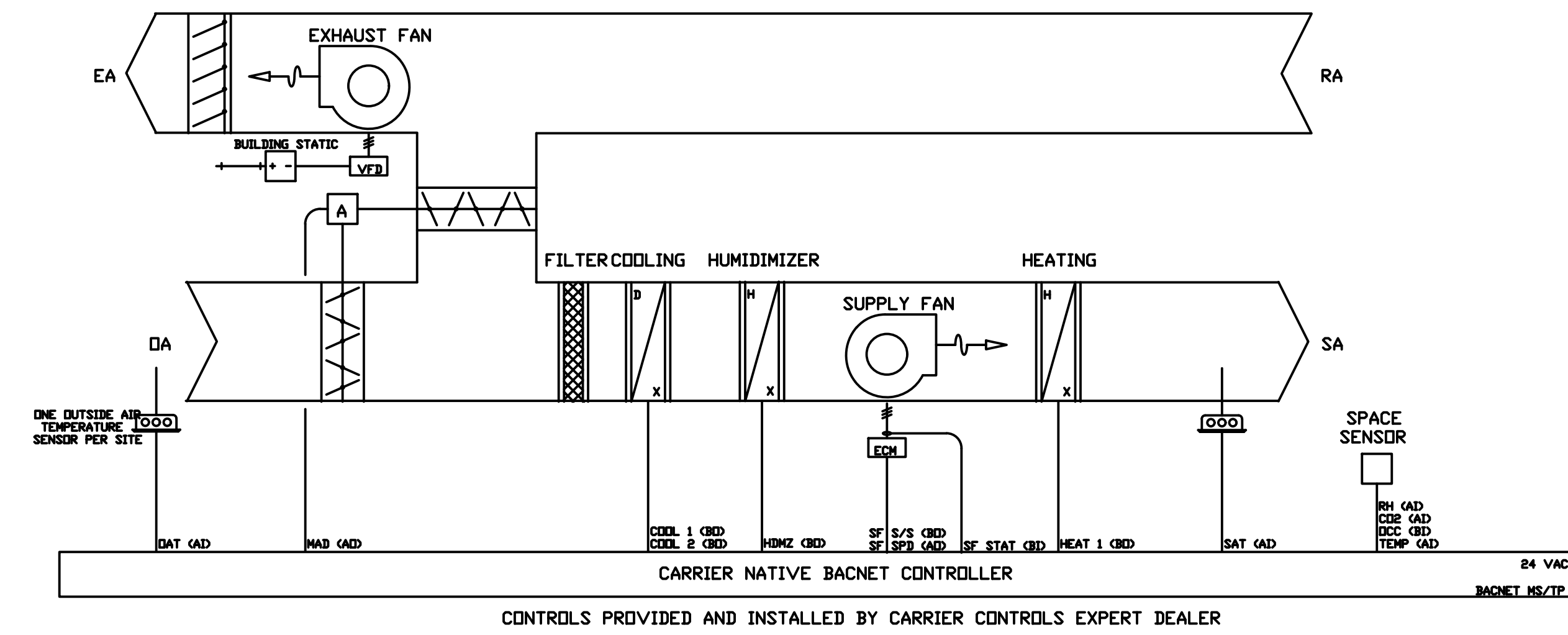
- NOTES:
 1. PROVIDE 14" MIN UNIT MANUFACTURER PREFABRICATED CURB.



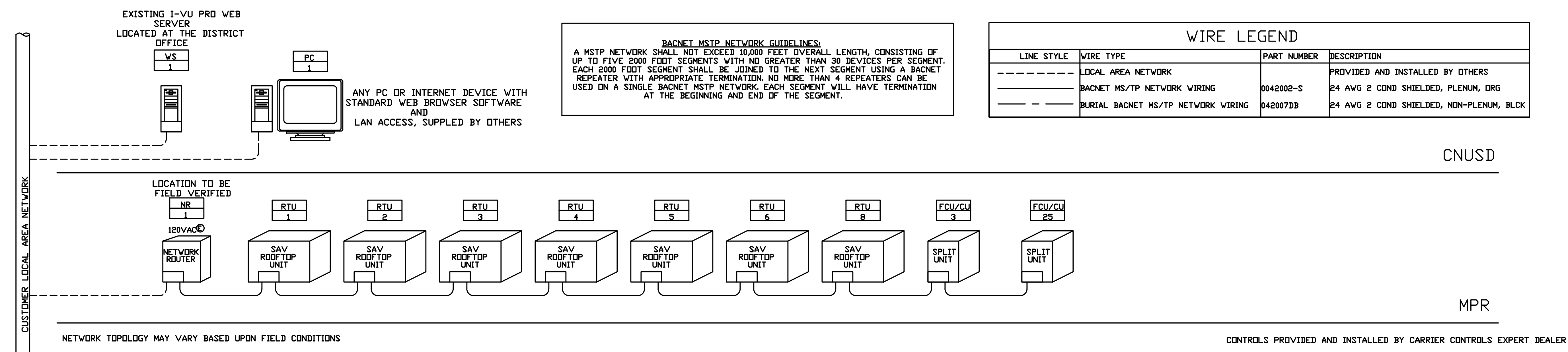
MARK	DATE	DESCRIPTION
	12/19/2022	DSA SUBMITTAL
	03/24/2023	DSA BACK-CHECK



RTU DETAIL (RTU-2 THRU RTU-6) 2



RTU DETAIL (RTU-C1 AND RTU-C8) 2



BACNET RISER DIAGRAM 1

5/28/2023

MicroMetl Date: _____ Weight: 347lbs (US) 157.4kg (Metric) Part Number: CRBV-SRT12GA-1112-P20
 Submitted to: RTU: _____ Approved by: _____ Notes: _____
 Vibration Isolation - Structurally Calculated Curb 21 Inches Tall / 11 Inch Curb Base, Full Perimeter, Non Insulated, With Power Exhaust Option . The Adjustable Deflection Spring Housing Meets California CBC, Seismic Requirements

REVISIONS:

REVISIONS:

MicroMetl Corporation Indianapolis, IN (916) 887-8822 Sparks, NV (888) 884-8822 Longview, TX (888) 248-4800

MicroMetl Date: _____ Weight: 347lbs (US) 157.4kg (Metric) Part Number: CRBV-SRT12GA-1112-P20
 Submitted to: RTU: _____ Approved by: _____ Notes: _____
 Vibration Isolation - Structurally Calculated Curb 21 Inches Tall / 11 Inch Curb Base, Full Perimeter, Non Insulated, With Power Exhaust Option . The Adjustable Deflection Spring Housing Meets California CBC, Seismic Requirements

CURB TO UNIT ATTACHMENT DETAIL

MicroMetl Corporation Indianapolis, IN (916) 887-8822 Sparks, NV (888) 884-8822 Longview, TX (888) 248-4800

MicroMetl Date: _____ Weight: 347lbs (US) 157.4kg (Metric) Part Number: CRBV-SRT12GA-1112-P20
 Submitted to: RTU: _____ Approved by: _____ Notes: _____
 Vibration Isolation - Structurally Calculated Curb 21 Inches Tall / 11 Inch Curb Base, Full Perimeter, Non Insulated, With Power Exhaust Option . The Adjustable Deflection Spring Housing Meets California CBC, Seismic Requirements

MicroMetl Corporation Indianapolis, IN (916) 887-8822 Sparks, NV (888) 884-8822 Longview, TX (888) 248-4800

MicroMetl Date: _____ Weight: 347lbs (US) 157.4kg (Metric) Part Number: CRBV-SRT12GA-1112-P20
 Submitted to: RTU: _____ Approved by: _____ Notes: _____
 Vibration Isolation - Structurally Calculated Curb 21 Inches Tall / 11 Inch Curb Base, Full Perimeter, Non Insulated, With Power Exhaust Option . The Adjustable Deflection Spring Housing Meets California CBC, Seismic Requirements

BASE CURB WELDING DETAILS

SUPPORT RAIL WELDING DETAILS

MicroMetl Corporation Indianapolis, IN (916) 887-8822 Sparks, NV (888) 884-8822 Longview, TX (888) 248-4800

MicroMetl Date: _____ Weight: 347lbs (US) 157.4kg (Metric) Part Number: CRBV-SRT12GA-1112-P20
 Submitted to: RTU: _____ Approved by: _____ Notes: _____
 Vibration Isolation - Structurally Calculated Curb 21 Inches Tall / 11 Inch Curb Base, Full Perimeter, Non Insulated, With Power Exhaust Option . The Adjustable Deflection Spring Housing Meets California CBC, Seismic Requirements

MicroMetl Corporation Indianapolis, IN (916) 887-8822 Sparks, NV (888) 884-8822 Longview, TX (888) 248-4800

MicroMetl Date: _____ Weight: 347lbs (US) 157.4kg (Metric) Part Number: CRBV-SRT12GA-1112-P20
 Submitted to: RTU: _____ Approved by: _____ Notes: _____
 Vibration Isolation - Structurally Calculated Curb 21 Inches Tall / 11 Inch Curb Base, Full Perimeter, Non Insulated, With Power Exhaust Option . The Adjustable Deflection Spring Housing Meets California CBC, Seismic Requirements

MicroMetl Corporation Indianapolis, IN (916) 887-8822 Sparks, NV (888) 884-8822 Longview, TX (888) 248-4800

AUTHORITY APPROVAL: IDENTIFICATION STAMP
 DIV. OF THE STATE ARCHITECT
 APP: 04-121721 INC. REVIEWED FOR
 SS [x] FLS [x] ACS [x]
 DATE: 05/10/2023

CSDA DESIGN GROUP
 LISTEN COLLABORATE CREATE

889 N. DOUGLAS STREET, SUITE 100
 EL SEGUNDO, CA 90245
 [T]: 310.821.9200
 www.csdesigndesigngroup.com

ARCHITECT STAMP

CONSULTANT:

TX ENGINEERING

2866 BIRCH LN.
 POMONA, CA 91767
 (213) 503-2332

CONSULTANT STAMP

PROJECT OWNER:
CORONA NORCO UNIFIED SCHOOL DISTRICT

2820 Clark Ave, Norco, CA 92860
 (951) 736-5000

PROJECT NAME:
CORONA FUNDAMENTAL INTERMEDIATE SCHOOL - MPR RENOVATION

1230 S Main St, Corona, CA 92882

MARK	DATE	DESCRIPTION
	12/19/2022	DSA SUBMITTAL
	03/24/2023	DSA BACK-CHECK

PROJECT NO.: **22063.01**

SHEET TITLE:
ISOCURB CUTSHEET

SHEET NO.:
M-701

NOTES: WELDING SPECIAL INSPECTION EXEMPT FOR SHEET METAL CURBS