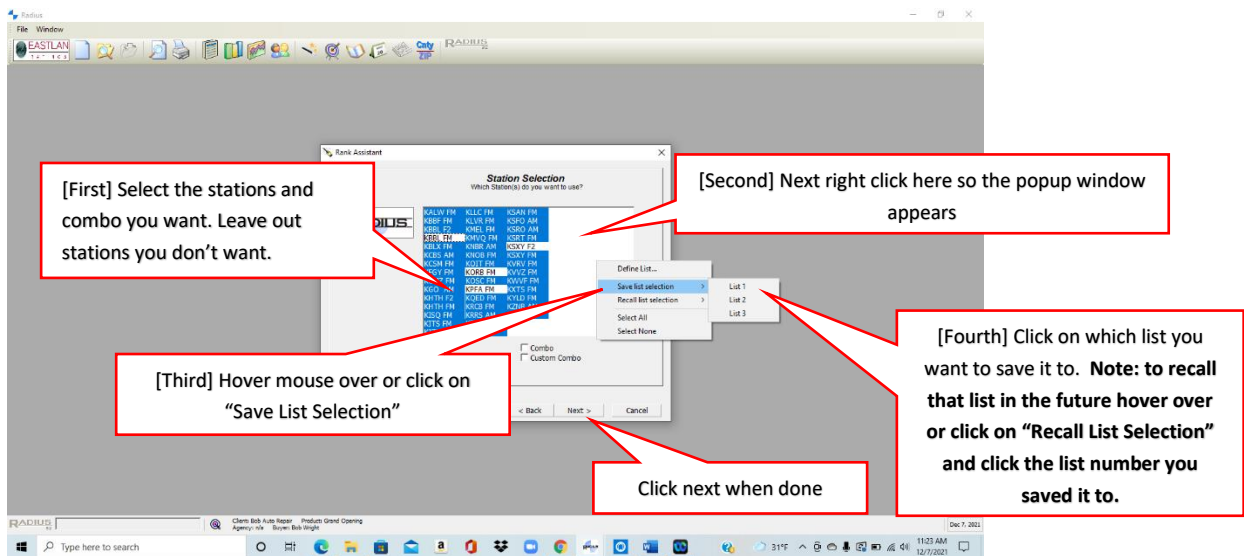




Create a custom “List Selection”: Start by selecting all the stations you want on the custom list, including your combo (do not select the individual stations that are part of your combo). Right click in the station selection box and then hover your mouse or click on “Save List Selection”. Then a popup window will appear where you can save it to one of three custom lists by clicking on that list number. Anytime you want to use that custom list, just right click on the Station Selection box, hover the mouse over or click on “Recall List Selection” and click on the saved list number. Then click next and proceed as normal. **PRO TIP: The custom List you created will be available in all the modules of Radius.**



Email support@eastlanratings.com or call 800-487-5010 if you need further help or training. Thank you for using Eastlan Ratings and Radius.