

Propét[®]

DIABETIC APPROVED FOOTWEAR





L CODE
L3216

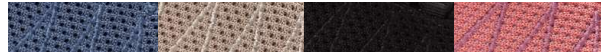
10 MM
DROP

Ortholite
certified foam insole

INDIGO - IN

TOUR KNIT
WAA112M
234500002

N (AA): 7-11, 12, 13
M (B) & W (D): 5-11, 12, 13
X (2E) & XX (4E): 6-11, 12, 13



DENIM - DEN SAND - SAN BLACK - BLK DARK PINK - DPI



L CODE
L3216

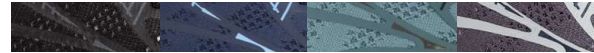
10 MM
DROP

Ortholite
certified foam insole

GREY / BERRY - GBY

PROPÉT ONE LT
WAA022M
235250004

N (AA): 7-11, 12, 13
M (B) & W (D): 5-11, 12, 13
X (2E) & XX (4E): 6-11, 12, 13



BLACK / GREY - BGR NAVY - NVY TEAL - TL LAVENDER / GREY - LAG



L CODE
L3216

10 MM
DROP

Ortholite
certified foam insole

GREY / PEACH - GPE

PROPÉT EC-5
WAA292M
235250011

N (AA): 7-11, 12, 13
M (B) & W (D): 5-11, 12, 13
X (2E) & XX (4E): 6-11, 12, 13



BLACK - BLK BLUE - BLU



L CODE
L3216

Scotchgard

vibram

Ortholite
certified foam insole

SKY BLUE - SKY

VISPER
WOA022M
235750003

M (B) & W (D): 5-11, 12, 13
X (2E) & XX (4E): 6-11, 12, 13



NAVY/MELON - NVM LIGHT GREY - LGR BLACK - BLK



TEAL/CORAL-TLC

PROPÉT ULTRA
WAA282M
235250001

N (AA): 7-11, 12, 13
M (B) & W (D): 5-11, 12, 13
X (2E) & XX (4E): 6-11, 12, 13



BLACK/GREY-BGR GREY/MINT-GMI GREY/PEACH-GPE LT GREY/SALMON-GSA DARK PINK/PURPLE-PUP



BLACK/GREY-BGR

PROPÉT ULTRA FX
WAA323M
2352500172

N (AA): 7-11, 12, 13
M (B) & W (D): 5-11, 12, 13
X (2E) & XX (4E): 6-11, 12, 13



TEAL/CORAL-TLC GREY/MINT-GMI



BLACK-BLK

PROPÉT B10
USHER
WAA282M
235000115

M (B) & W (D): 5-11, 12, 13, 14
X (2E) & XX (4E): 6-11, 12, 13, 14



MINT-MIN POWDER BLUE-PBL TAUPE-T

FOR OPTIMAL FOOT POSTURE & BALANCE ULTIMA SERIES

Designed for both men and women, the Ultima Series offers a combination of style, comfort, and unrivaled support. With its straight last design, The Ultima Series is designed to address the needs of individuals requiring enhanced foot posture and balance.

The straight last construction ensures a more natural and accommodating fit, catering to those with flatter arches or feet that are less curved, providing a spacious toe box and consistent width throughout the shoe. By offering a roomier fit, it eliminates unnecessary pressure points and allows your feet to relax and breathe comfortably.

The uniform width and shape promotes a well-aligned foot position, reducing the risk of overpronation or excessive inward rolling of the foot.





STRAIGHT LAST

WHITE/DENIM – WDE

ULTIMA
WAA302L
235750168

M (B), W (D), & X (2E) : 6–10, 11, 12, 13



GREY – GRY



STRAIGHT LAST

PINK – PIN

ULTIMA X
WAA312L
235550170

M (B), W (D), & X (2E) : 6–10, 11, 12, 13



BLACK – BLK GREY – GRY



STRAIGHT LAST

BLACK – BLK

ULTIMA STRAP
WAA303L
235750169

M (B), W (D), & X (2E) : 6–10, 11, 12, 13



WHITE – WHT



STRAIGHT LAST

BLACK – BLK

ULTIMA FX
WAA313L
235550171

M (B), W (D), & X (2E) : 6–10, 11, 12, 13



GREY – GRY



L CODE
L3216

BLACK - BLK

STABILITY WALKER
W2034
234750008

N (AA): 7-11, 12, 13
M (B), W (D), X (2E) &
XX (4E): 5-11, 12, 13



WHITE - WHT WHITE / LIGHT
BLUE - WLB WHITE / PINK
- WPI



L CODE
L3216

BLACK - B

STABILITY WALKER STRAP
W2035
234750009

N (AA): 7-11, 12, 13
M (B), W (D), X (2E) & XX
(4E): 5-11, 12, 13



WHITE - W



L CODE
L3216



BLACK - B

STANA
WAS012L
234750011

M (B): 5-10, 11, 12
W (D), X (2E) & XX (4E): 6-10, 11, 12



WHITE - W



SR TEST RESULTS

Oily/Wet: **0.48**
Greasy/Wet: **0.38**



L CODE
L3216

DENIM/WHITE - DMW

STABILITY FLY
WAA072M
234250010

N (AA): 7-11, 12, 13
M (B), W (D), X (2E)
& XX (4E): 5-11, 12, 13



BLACK/BERRY WHITE/SILVER
- BBY - WHS



BLACK / BERRY – BBY

STABILITY X
WAA032M
234250007

N (AA): 7–11, 12, 13
M (B) & W (D): 5–11, 12, 13
X (2E) & XX (4E): 6–11, 12, 13



BLACK – BLK LIGHT GREY – LGR



BLACK / BERRY – BBY

STABILITY X STRAP
WAA033M
234250006

N (AA): 7–11, 12, 13
M (B) & W (D): 5–11, 12, 13
X (2E) & XX (4E): 6–11, 12, 13



BLACK – BLK LIGHT GREY – LGR



BLACK / HOT PINK– BP

STABILITY STRIVE
WAA212M
234250012

N (AA): 7–11, 12, 13
M (B), W (D), X (2E) & XX (4E): 5–11, 12, 13



GREY / PURPLE– GRP



DENIM – DEN

SACHI
WCA072P
234500134

N (AA): 6–11
M (B), W (D), X (2E)XX (4E): 6–11, 12



BLACK – BLK SAND – SAN



L CODE
L3216

BLACK - BLK

TOUR WALKER STRAP
W3902
234000017

N (AA): 6-11, 12
M (B): 5-11, 12
W (D), X (2E), & XX (4E): 6-11, 12



SPORT WHITE NAVY - NVY WHITE - WHT WHITE / BLUE - WBL - SW



L CODE
L3216

BLACK - BLK

LIFEWALKER SPORT
WAA312L
234000112

N (AA): 6-11, 12
M (B): 5-11, 12
W (D), X (2E), & XX (4E): 6-11, 12



WHITE - WHT NAVY - NVY LIGHT GREY - LGR



L CODE
L3216

BLACK - BLK

LIFEWALKER SPORT FX
WAA073L
234000167

N (AA): 6-11, 12
M (B): 5-11, 12
W (D), X (2E), & XX (4E): 6-11, 12



WHITE - WHT



L CODE
L3216



SR BLACK - SB

WASHABLE WALKER
W3840
23425095

N (AA): 6-11
M (B), W (D), & X (2E): 5-11



SR WHITE - SWH



SR TEST RESULTS
Oily/Wet: **0.34**
Greasy/Wet: **0.32**



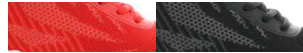
INSIDE ZIP



GREY – GRY

TRAVELBOUND HI
WAA006M
234250101

N (AA): 6–11, 12
M (B): 5–11, 12
W (D), X (2E), & XX (4E): 6–11, 12



RED – RED BLACK – BLK



BLACK – BLK

TRAVELBOUND DUO
WAA262M
23400062

N (AA): 6–11, 12
M (B): 5–11, 12
W (D), X (2E), & XX (4E): 6–11, 12



BLUE – BLU TAN – TAN GREY/MINT – GMI



ALL BLACK SMOOTH – AB

ONALEE
WAA003P
233500023

N (AA): 6–10, 11
M (B): 5–10, 11, 12
W (D), X (2E): 6–10, 11, 12
XX (4E): 6–10, 11, 12



BEIGE – BEI



WHITE ONYX – WOX

GOLDA
WCA053L
235250018

M (B), W (D), & X (2E): 6–11, 12



TEAK – TK BLACK – BLK GREY – GRY



BLACK - BLK

WILMA
WCA043P
235500024

M (B), W (D), X (2E) & XX (4E): 6-10, 11



BLACK - B

OLIVIA
WPRX25
235500025

M (B): 5-11, 12
W (D) & X (2E): 6-11, 12
XX (4E): 6-11



BONE - BO TAUPE - T BRONCO BROWN - BRO



BLACK - BLK

PEDWALKER 3
WPED3
235500152

M (B), W (D), X (2E) & XX (4E): 6-11, 12



BLACK - B

CUSH N FOOT
W0206
233750091

N (AA): 6-10
M (B), W (D), X (2E), & XX (4E): 6-11, 12



BURGUNDY CORDUROY - BCO STONE CORDUROY - BCO



BLACK - BLK

DANI ANKLE LACE
WBA062N
234250020

N (AA), M (B), W (D), X (2E), & XX (4E): 6-10, 11



BLACK - BLK

DANI MID
WBA005N
234500021

N (AA), M (B), W (D), X (2E), & XX (4E): 6-10, 11



BORDO - BDO NAVY - NVY DARK GREY - DGR



BLACK - BLK

DANI STRAP
WBA003N
234250022

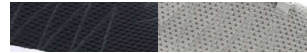
N (AA), M (B), W (D), X (2E), & XX (4E): 6-10, 11



NAVY - NVY

TOUR KNIT
MAA252M
234500028

M (D) & W (E): 7-12, 13, 15, 15, 16
X (3E) & XX (5E): 8-12, 13, 14, 15, 16



BLACK - BLK DARK GREY - DGR



CRIMSON / GREY - CGY

PROPÉT ONE
MAA102M
235250029

M (D) & W (E): 7-12, 13, 15, 15, 16
X (3E) & XX (5E): 8-12, 13, 14, 15, 16



BLACK / SILVER - BSV NAVY / GREY - NVG



NAVY / LIME - NLI

PROPÉT ONE LT
MAA022M
235250030

M (D) & W (E): 7-12, 13, 15, 15, 16
X (3E) & XX (5E): 8-12, 13, 14, 15, 16



BLACK / GREY - BGR GREY / BLUE - GRB DARK GREY / BURNT ORANGE - GOR



BLACK - BLK

VISP
MOA012M
236000086

M (D), X (3E) & XX (5E): 8-12, 13, 14, 15, 16



BLUE - BLU RED - RED OLIVE - OLV BLACK/WHITE - BLW



BLACK / GREY – BGR

PROPÉT ULTRA 267 M (D), W (E), X (3E) & XX (5E): 8–12, 13, 14, 15, 16, 17, 18
MAA322M
2355500083



NAVY / GREY-
NVG GUNSMOKE / GREY
– GUG



GREY – GRY

PROPÉT B10 USHER M (D), W (E), X (3E) & XX (5E): 8–11, 12, 13, 14, 15, 16
MAB012MM
23500082



BLACK – BLK



NAVY / GREY-NVG

PROPÉT ULTRA 267 FX M (D), W (E), X (3E) & XX (5E): 8–12, 13, 14, 15, 16, 17, 18
MAA322M
2355500083



BLACK / GREY
– BGR GUNSMOKE / GREY
– GUG



ALL BLACK – ABL

VIATOR HI M (D), W (E), X (3E) & XX (5E): 8–12, 13, 14, 15, 16
MAA112M
234750033



NAVY – NVY BLACK – BLK GREY / ORANGE – GOR

ULTIMA SERIES

FOR OPTIMAL FOOT POSTURE & BALANCE

With its straight last design, The Ultima Series is designed to address the needs of individuals requiring enhanced foot posture and balance.

The straight last construction ensures a more natural and accommodating fit. It caters to those with flatter arches or feet that are less curved, providing a spacious toe box and consistent width throughout the shoe. By offering a roomier fit, it eliminates unnecessary pressure points and allows your feet to relax and breathe comfortably.

Key advantages of the straight last design is the added stability it provides, the uniform width and shape promotes a well-aligned foot position, reducing the risk of overpronation or excessive inward rolling of the foot. This feature is especially beneficial for individuals with flat feet or those seeking additional support.



STRAIGHT LAST

BLACK – BLK

ULTIMA STRAP
MAA363L
235750088

M (B), W (E), X (3E), & XX (5E) : 8–12, 13, 14, 15, 16



WHITE – WHT



STRAIGHT LAST

BLACK – BLK

ULTIMA FX
MAA373M
235500087

M (B), W (E), X (3E), & XX (5E) : 8–12, 13, 14, 15, 16



NAVY – NVY



L CODE
L3221

BLACK – BLK

STABILITY WALKER
M2034
235000034

N (B): 9–12, 13, 15, 15, 16
M (D), W (E), X (3E) & XX (5E): 7–12, 13, 14, 15, 16, 17



WHITE – WHT **WHITE / TAUPE** **WHITE / NAVY**
 - WTT **- WN**



L CODE
L3221

CHOCO / BLACK NUBUCK
- CBN

STABILITY WALKER
M2034
235000036

M (D), W (E), X (3E) & XX (5E):
7–12, 13, 14, 15, 16, 17



GREY / BLACK NUBUCK – GBN



L CODE
L3221

BLACK – B

STABILITY WALKER STRAP
M2035
235000035

N (B): 9–12, 13, 15, 15, 16
M (D), W (E), X (3E) & XX (5E): 7–12, 13, 14, 15, 16, 17



WHITE – W



L CODE
L3221 

BLACK – BLK

STARR
MAS022L
235000058

M (D), W (E), X (3E) & XX (5E): 8–12, 13, 14, 15, 16



SR TEST RESULTS
Oily/Wet: **0.48**
Greasy/Wet: **0.38**

MEN'S DIABETIC FOOTWEAR



DARK GREY – DGR

STABILITY X
MAA012M
234500040

M (D), W (E), X (3E) & XX (5E): 7–12, 13, 14, 15, 16, 17



BLACK – BLK NAVY – NVY LT. GREY – LGR WHITE/ NAVY – WN



NAVY – NVY

STABILITY X STRAP
MAA013M
234500039

M (D), W (E), X (3E) & XX (5E): 7–12, 13, 14, 15, 16, 17



BLACK – BLK STONE/BLACK – STN LT. GREY – LGR WHITE/ NAVY – WN



DARK GREY /
LIGHT GREY – GG

STABILITY FLY
MAA032M
234500037

N (B): 9–12, 13, 15, 15, 16
M (D), W (E), X (3E) & XX (5E): 7–12, 13, 14, 15, 16, 17



NAVY / GREY – NVG BLACK – BLK



GREY / BLACK – GYB

STABILITY MID
MAA292P
234750030

M (D), W (E), X (3E) & XX (5E): 7–12, 13, 14, 15, 16, 17



BLACK / WHITE – BW



L CODE
L3221
Scotchgard
DUROCLOUD
FOAM

BLACK – BLK

KENJI
MCA152S
235000043

M (D), W (E), X (3E), & XX (5E): 8–12, 13, 14, 15, 16, 17, 18



GREY – GRY SAND – SAN



L CODE
L3221
DUROCLOUD
FOAM

BROWN – BR

KARSTEN
MCA132L
235000044

M (D), W (E), X (3E), & XX (5E): 8–12, 13, 14, 15, 16, 17, 18



BLACK – BLK



L CODE
L3221
DUROCLOUD
FOAM

BLACK – BLK

KADE
MCA043L
235000042

M (D), W (E), X (3E), & XX (5E): 8–12, 13, 14, 15, 16, 17, 18



CHOCOLATE – CHO



L CODE
L3222
DUROCLOUD
FOAM

ALL BLACK – ABL

KENTON
MCA005L
235500041

M (D), W (E), X (3E), & XX (5E): 8–12, 13, 14, 15, 16, 17, 18



BROWN – BR



NAVY - NVY

POMEROY
MCA082S
235500047

M (D), W (E), X (3E), & XX (5E): 8-12, 13, 14, 15, 16, 17, 18



TIMBER - TR



TIMBER - TR

PORTER
MCA023S
235500045

M (D), W (E), X (3E), & XX (5E): 8-12, 13, 14, 15, 16, 17, 18



BLACK - BLK



BLACK - BLK

PARKER
MCA033L
235250046

M (D), W (E), X (3E), & XX (5E): 8-12, 13, 14, 15, 16, 17, 18



BROWN - BR



L CODE
L3221

NAVY – NVY

LIFEWALKER SPORT
MAA272L
234250032

M (D), W (E), X (3E) & XX (5E):
7–12, 13, 14, 15, 16, 17, 18



L CODE
L3221

BLACK – BLK

SCANDIA STRAP
M5015
236250048

M (D), X (3E) & XX (5E): 7–12, 13, 14, 15



BLACK – BLK DARK GREY – DGR



L CODE
L3219

SPORT WHITE – SWL

LIFEWALKER STRAP
M3705
234250031

M (D), W (E), X (3E) & XX (5E):
7–12, 13, 14, 15, 16, 17, 18



WHITE – WHT BROWN – BR BLACK-BLK DARK GREY – DGR



L CODE
L3219

BROWN GRAIN – BR

VILLAGER
M4070
236000049

N (B): 9–12, 13, 14
M (D), W (E), X (3E) & XX (5E): 7–12, 13, 14, 15, 16, 17



BLACK GRAIN – B



L CODE
L3221

TAN - TAN

FINN
MCX022L
235750053

M (D), W (E), X (3E) & XX (5E): 8-12, 13, 14, 15



BLACK - BLK



L CODE
L3222 4"
HEIGHT

BLACK - BLK

FINDLEY
MCX012L
236250052

M (D), W (E), X (3E) & XX (5E): 8-12, 13, 14, 15



TAN - TAN



L CODE
L3221 

STONE - STN

FINN
MCX022S
23500050

M (D), W (E), X (3E) & XX (5E): 8-12, 13, 14, 15



TAN - TAN BLACK - BLK



L CODE
L3222 4"
HEIGHT 

DESERT CAMEL - DCA

FINDLEY
MCX012S
235250051

M (D), W (E), X (3E) & XX (5E): 8-12, 13, 14, 15



BLACK - BLK TAN - TAN STONE - STN



L CODE
L3221





CAMEL - CAM

COLEMAN
MXA003M
234500055

M (D), X (3E) & XX (5E): 8-12, 13, 14, 15, 16



BLACK - BLK



L CODE
L3221

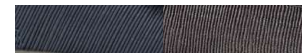




BLACK - B

CUSH N FOOT
M0202
23400003

M (D), X (3E) & XX (5E): 7-12, 13, 14, 15, 16



NAVY
CORDUROY
- NVC

SLATE
CORDUROY
- SLC



L CODE
L3219





BLACK SMOOTH /
NYLON - B

PEDWALKER 3
MPED3
235500057

M (D), X (3E), & XX (5E): 8-12, 13, 14, 15



BROWN - BRN

CONNELLY
M5503
236250075

M (D): 7-12, 13, 14, 15, 16
X (3E) & XX (5E): 8-12, 13, 14, 15, 16



GUNSMOKE /
ORANGE - GUO

CONNELLY STRAP
M5502
236250076

M (D): 7-12, 13, 14, 15, 16
X (3E) & XX (5E): 8-12, 13, 14, 15, 16



GUNSMOKE / ORANGE - GUO



BROWN - BRN ALL BLACK - ABL



BROWN / ORANGE - BOR

COOPER
MOA062M
236000077

M (D): 7-12, 13, 14, 15, 16
X (3E) & XX (5E): 8-12, 13, 14, 15, 16



GUNSMOKE / ORANGE - GUO

CONRAD
MOA052S
226500078

M (D): 7-12, 13, 14, 15, 16
X (3E) & XX (5E): 8-12, 13, 14, 15, 16



BLACK - BLK NAVY/LIME-NLI



BLACK - BLK

L CODE
L3222



BROWN/OLIVE – BOV

CORTLAND
MBA006C
237250084

M (D), X (3E) & XX (5E): 8–12, 13, 14, 15, 16



GUNSMOKE /
ORANGE – GUO

VEYMONT
MOA022S
238000082

M (D), X (3E) & XX (5E):
8–12, 13, 14, 15, 16



BLACK/GREY – BGR



BLACK / RED – BRD
GREY / BLUE – GRB



BLACK / RED – BRD

VERCORS
MOA002S
237000083

M (D), X (3E) & XX (5E): 8–12, 13, 14, 15, 16



GREY / BLUE – GRB
GREY / OLIVE – GRO



BLACK / ORANGE – BKO

VESTRIO
MOA042M
236250083

M (D), X (3E) & XX (5E):
8–12, 13, 14, 15, 16



BLACK / GREY – BGR
GREY / BLUE – GRB

MEN'S DIABETIC FOOTWEAR



GUNSMOKE / ORANGE – GUO

RIDGE WALKER
M3599
235250079

M (D), X (3E, W (3E) & XX (5E): 8–12, 13, 14, 15, 16



BROWN – BR BLACK – B GREY / BLUE – GRB



GREY / BLUE – GRB

RIDGE WALKER LOW
M3598
235000080

M (D), X (3E, W (3E) & XX (5E): 8–12, 13, 14, 15, 16



BLACK – B BROWN – BR GUNSMOKE / ORANGE – GUO



BLACK – BLK

RIDGE WALKER FORCE
MBA052L
235500081

M (D), X (3E, W (3E) & XX (5E): 8–12, 13, 14, 15, 16



BROWN – BR



SAND / BROWN – SAB

TRAVERSE
MBA042K
235250074

M (D), X (3E) & XX (5E): 8–12, 13, 14, 15, 16



GREY / BLACK – GRB BLACK / DARK GREY – BGR



BROWN CRAZY HORSE – BCH

CLIFF WALKER
M3188
236000068

M (D): 7–12, 13, 15, 15, 16
W (E), X (3E) & XX (5E): 8–12, 13, 14, 15, 16



BLACK – B BRONCO BROWN – BRO



BLACK – BLK

CLIFF WALKER
TALL STRAP
MBA033L
236250069

M (D): 7–12, 13, 15, 15, 16
W (E), X (3E) & XX (5E): 8–12, 13, 14, 15, 16



BLACK GRAIN – BLK

CLIFF WALKER
LOW STRAP
MBA023L
235750071

M (D): 7–12, 13, 15, 15, 16
W (E), X (3E) & XX (5E): 8–12, 13, 14, 15, 16



BROWN CRAZY HORSE – BCH



BLACK – B

CLIFF WALKER NORTH
M3187
236000070

M (D): 7–12, 13, 15, 15, 16
W (E), X (3E) & XX (5E): 8–12, 13, 14, 15, 16

We understand the importance of finding work boots that provide a perfect fit and superior comfort, which is why we offer a diverse range of sizes than other footwear providers. Our commitment to quality extends to meeting the stringent standards set by the ASTM (American Society for Testing and Materials).

All our work boots feature a composite toe with a crush rating of 75 pounds that provides exceptional protection without sacrificing comfort and have successfully passed the **ASTM F2412-11 and ASTM F2413-17 standards**, ensuring that our boots meet the requirements for impact resistance, compression resistance, and electrical hazard protection. (18KV resistance for 1 minute)

With our wide range of extended widths and sizes and a focus on comfort, you can confidently step into your workday knowing that our boots are designed to provide an optimal fit and minimize foot fatigue. Whether you work in construction, warehouse, industrial settings, or any other occupation that demands safety and comfort, our boots are built to exceed your expectations. Your feet deserve the best, and we're here to provide it.



L CODE
L3221

BLACK - BLK

SEELEY II
MAU012M
235750060

M (D), W (E), X (3E) & XX (5E): 8-12, 13, 14, 15, 16

SR TEST RESULTS
Oily/Wet: **0.94**
Greasy/Wet: **0.44**



L CODE
L3222

4"
HEIGHT

DARK GREY / BLACK - GYB

SEELEY HI
MAU022M
236250061

M (D), W (E), X (3E) & XX (5E): 8-12, 13, 14, 15



L CODE
L3222

HEIGHT
4" 1/2

GREY / BLUE – GRB

TRAVERSE WORK
MBU042K
235750045

M (D), X (3E) & XX (5E): 8–12, 13, 14, 15



BLACK / GREY – BGR



L CODE
L3222

HEIGHT
4"

BLACK – BLK

SHIELDWALKER
MBU002L
236250063

M (D) : 7–12, 13, 15, 15, 16
W (E) ,X (3E) & XX (5E): 8–12, 13, 14, 15, 16



L CODE
L3222

HEIGHT
4" 1/2

BROWN / ORANGE – BOR

SENTRY
MBU032M
236000062

M (D), X (3E) & XX (5E): 8–12, 13, 14, 15



BLACK – BLK



L CODE
L3222

HEIGHT
7"

BROWN / BLACK – BRB

BLIZZARD WORK
MBU005M
236000059

M (D): 7–12, 13, 14, 15, 16
X (3E), W (E), & XX (5E): 8–12, 13, 14, 15, 16



BROWN CRAZY HORSE - BCH

BLIZZARD ANKLE ZIP
M3786
225250065

M (D): 7-12, 13, 14, 15, 16
X (3E), W (E), & XX (5E): 8-12, 13, 14, 15, 16



BLACK - BLK



BROWN CRAZY HORSE - BCH

BLIZZARD TALL ZIP
MBA035L
236250064

M (D): 7-12, 13, 14, 15, 16
X (3E), W (E), & XX (5E): 8-12, 13, 14, 15, 16



BROWN CRAZY HORSE - BCH

BLIZZARD MID ZIP
M3792
225750066

M (D): 7-12, 13, 14, 15, 16
X (3E), W (E), & XX (5E): 8-12, 13, 14, 15, 16



BLACK - BLK



BROWN CRAZY HORSE - BCH

BLIZZARD MID LACE
M3789
235750067

M (D): 7-12, 13, 14, 15, 16
X (3E), W (E), & XX (5E): 8-12, 13, 14, 15, 16



BLACK - BLK



BLACK - BLK

TYLER
MBA003L
236500073

M (D), X (3E) & XX (5E): 8-12, 13, 14, 15



WALKING PRO
USX2300G
231100027

S, M, L, XL, XXL, & XXL



BLACK - BLK

TROY
MBA005L
236500072

M (D), X (3E) & XX (5E): 8-12, 13, 14, 15



CONTOUR PRO
ZORTHAP
231800028

Womens: 6-12, 13, 14, 15
Mens: 7-12, 13, 14, 15, 16, 17, 18

A CODE
5512