



Galilee Lutheran Church

WALKING WITH JESUS, SHARING GOD’S LOVE AND GRACE, SERVING ALL FAITHFULLY.



galileelc.org



(262) 691-2380



galilee@galileelc.org



N24W26430 Crestview Dr.
Pewaukee, WI 53072



Table of Contents

METeam	Page 2
Leadership Board.....	Page 3
Faith Formation.....	Pages 4-5
Godly Play & Compassion Care.....	Page 6
Partnerships.....	Pages 7-8
Music Ministry.....	Pages 9-10
August Memories.....	Pages 11-12
Family News.....	Page 13
Ministry & Staff.....	Page 14
Calendar.....	Page 15

A NEW MISSION STATEMENT FOR GALILEE

On page 3 of this month’s Galilean you will see that we have a new mission statement, thanks to the faithful work of our Leadership Board and METeam. LB President, Carl Spencer brings you up-to-date on all that has happened over the past month and where this now leads us in September. I want to offer here a few thoughts on our new mission statement and what it says to me about Galilee.

Walking with Jesus...

Much like the two walking the road to Emmaus when a stranger joins them (it was Jesus), we too are walking this journey of life as Jesus comes alongside us on the way. As we walk, as we listen, as we ask questions and discuss, we learn more and more about Jesus. At Galilee, we worship and learn day by day, bringing our questions and our faith as we seek to walk more closely with our Savior who shows us the way.

Sharing God’s Love and Grace...

The love and grace we receive from God in Jesus Christ is not ours alone. Galilee is a community where we share these gifts freely and generously. We proclaim God’s love in word and deed, knowing that it is our calling to bring the Good News to one another and to the world around us. No one is outside the scope of God’s love!

Serving All Faithfully

The compassion of Christ compels us to be at work in the world, serving as agents of God's hope, healing and restoration. With all that we have been given, we seek to serve Jesus through serving others:

"for I was hungry and you gave me food, I was thirsty and you gave me something to drink, I was a stranger and you welcomed me, I was naked and you gave me clothing, I was sick and you took care of me, I was in prison and you visited me." Then the righteous will answer him, "Lord, when was it that we saw you hungry and gave you food, or thirsty and gave you something to drink? And when was it that we saw you a stranger and welcomed you, or naked and gave you clothing? And when was it that we saw you sick or in prison and visited you?" And the king will answer them, "Truly I tell you, just as you did it to one of the least of these who are members of my family, you did it to me." (Matt 25:35-40)

Thank you for adopting this mission statement and for leaning into all that God has for you! I am excited to see where God leads you.

Pastor Jennifer

METeam September News

Just as the summer is winding down, the METeam is also winding down its work. In August the team attended two retreats with the Leadership Board to develop a new Mission Statement and to begin the work of developing visions for Galilee's future. In this work we were guided by the many thoughts and prayers that you have shared with us over the past months. With many prayers for God's continued guidance, the METeam then prepared a draft of the Ministry Site Profile (MSP) and sent it to the Leadership Board. The Leadership Board has been reviewing the statements prepared by the METeam as well as adding the information that they must provide—things like the compensation package that Galilee will offer our new pastor.



The METeam will have at least one more meeting in September following our receipt of the information from the Leadership Board. Our final step will be to formally present the MSP to the congregation, the Leadership Board, and to Bishop Paul Erickson at a Town Hall meeting which is tentatively set for Sunday, October 15. We hope you will be able to join us at this very important step in our call process. We will be confirming the date and time of the Town Hall meeting in the next few weeks. After the Town Hall meeting, the Call Committee, as appointed by the Leadership Board, will begin its process to seek and interview pastoral candidates for Galilee. The MSP will aid the Synod in selecting potential pastors for Galilee and will inform potential pastors about Galilee: who we are, where we believe God is leading us, and the strengths and talents we hope to find in our new pastor. We ask that you continue to pray for the METeam, the Leadership Board and the future Call Committee as we seek God's direction in finding our new Pastor.

September Update from the Leadership Board

July and August have been busy months for the Leadership Board. Here is what has been happening:

- Following the Leadership Retreat back in April it was clear that our Mission and Vision statements no longer reflected who Galilee is today. The more we tried to move things forward the more we realized that our understanding of who we are and who we want to be needed to be updated. We met with the METeam for two long evening meetings planned as a Mission and Vision retreat. At the first meeting on July 24th we spent the evening reviewing the steps the congregation has been taking in our call process: The importance and relevance of remembering our history, the information that is coming out of the surveys we've all been a part of and talking and listening to one another about our future. Our focus was on trying to create a new direction with a statement that was memorable and brief, yet focused on our relationships with God in Jesus Christ. We started to develop our thoughts and then spent a week to think and pray about our direction. We met again on July 30th and at that meeting we coalesced around a new mission statement, one to define what our purpose is, who we serve and how we serve. With approval from all attending we confirmed the following as our new Mission Statement:

“WALKING WITH JESUS. SHARING GOD’S LOVE AND GRACE. SERVING ALL FAITHFULLY.”

- With our new Mission Statement defined we went to work on the Vision Statement during our regular August Board meeting. The purpose of a vision statement is to bring meaning and realize God’s direction to the church, helping inspire us in our goals. After offering numerous thoughts, particularly about our desire to re-build our relationships in both our internal and external communities, we came together with the following Vision Statement:

“TO RE-ROOT OURSELVES IN THE PEWAUKEE COMMUNITY,
BUILDING PARTNERSHIPS THAT BRING BLESSINGS TO OUR NEIGHBORS,
WHILE STRENGTHENING OUR RELATIONSHIPS WITHIN GALILEE IN THE NAME OF JESUS”

- We still have a lot of work to do but with our new statements now defined we will be moving on to develop new goals that better match who we are (these will be coming in September). We’re going to be asking for your help in some areas so please pay particular attention over the next few weeks to announcements and other communications as we need to work with the METeam to complete the Ministry Site Profile (MSP). Our goal is to complete the MSP and have it in the congregation’s hands by October 1st. This will give us all time to review and confirm this work so that we are ready on October 15th to meet with the Bishop at a planned Town Hall type of meeting at Galilee to share who we are and what we are looking for in our next Pastor.

Our membership today is different than it was 20 years ago. Who we are as a congregation has changed. Our community in and around us has changed and how we want to participate with our community has changed. While, like many of you, I wish that this was a faster process I can say without question that I believe Galilee will be better having taken these steps. Many thanks go out to all of you for your participation. We’re making substantial strides and I think it’s safe to say it’s about to get pretty exciting!

Carl Spencer
President

Faith Formation

Isn't it nice to receive personal snail mail? In the stack of junk mail, a personal card or letter can be a ray of sunshine. Give hope and comfort. Make one feel loved or appreciated.

Join our Sunday School & Confirmation kids on September 10 as we create cards for Galilee members, college students, and residents at Legacy Assisted Living in Pewaukee. If you like to work with markers, stickers and fancy scissors, or have a knack for writing brief messages sharing God's love, this is the place for you to share your creative gifts!

We will begin in the sanctuary at 10:15 am with song and prayer before moving to the Gathering Place. Don't feel you have creative skills? While the cards are being created, you can address envelopes, write brief messages to insert in the cards, and affix postage. And get to know the other people at your table who are part of God's family.



Questions? Contact Jean Nelson at jeancyf@galileelc.org.



Confirmation resumes on September 10

Students in grades 7-8 and their parents can help with the service project until 10:45 am when they meet with Pastor Jennifer to talk about the new year. Students who will be confirmed in October are invited to participate in the service project in the Gathering Place.

SUNDAY SCHOOL CORNER

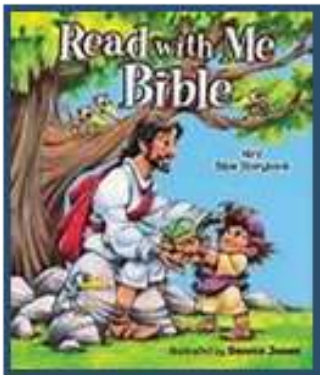


We are so excited to welcome everyone back to Sunday School on **September 10th**. We will gather at **10:15** in the sanctuary in order to kick off our Faith Formation year. Much like we ended in May, the Sunday School students and their families will be partnered with other members of our congregation to complete a service project in the Gathering Place. We hope everyone can join us. September 17th will be the first Sunday that students will gather in their classrooms with their teachers. We are looking forward to another wonderful Sunday School year.



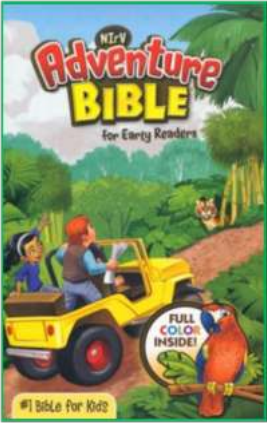
When a child is baptized, parents make a promise to place the Word of God in the hands of their child. Galilee promises to support parents as they help their child grow in the Christian faith and life. It is important that an age-appropriate Bible is shared.

Children entering 5K will receive a “Read with Me Bible (NIRV Bible Storybook). This version gives parents the opportunity to read to their children from a selection of 105 best-loved Bible stories in a version that uses simpler words and shorter sentences. As children become more proficient in reading, they can read the stories to a younger sibling, a family pet, or even a favorite stuffed animal.



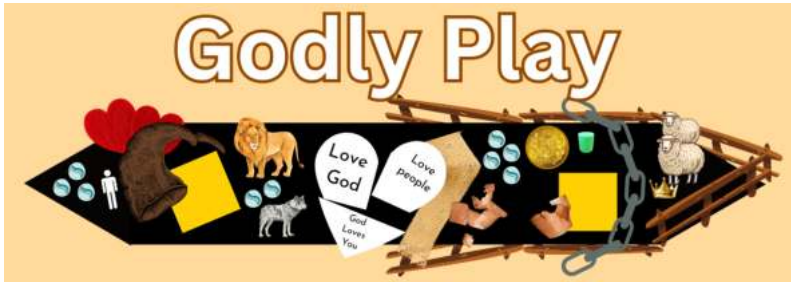
Students entering 1st grade will receive a copy of the Whirl Story Bible, Lectionary Edition. Stories in this version correspond to the lessons each week. Which also match the lessons read in worship each weekend.

Third graders will receive the Adventure Bible for Early Readers. Written at a 3rd grade reading level, this Bible includes information about life in ancient days, close-up looks at amazing people of the Bible, hands-on activities, interesting facts, and great verses to memorize, plus book introductions, a dictionary, and color maps.



Students in Confirmation, grades 7-8, will receive the colaborate Lutheran Student Bible. Geared for grades 6-12, this Bible helps “bring the story of God to life for teenagers with interactive graphics, interesting facts, and insightful commentary.”

Please pray for these children and their parents, that God will give them a love of reading God’s Word and the desire to know more about God’s story and their place in the story.



**Godly Play Fall Schedule -
Volunteers Needed**

Godly Play will return to a weekly schedule starting on **September 10th** during Sunday's service. Godly Play program provides support to young families.

Godly Play is a twenty minute interactive Bible story time for children ages 3-10. Students begin the service with their families and are dismissed to Godly Play after the Children's Word. Students will return to the Sanctuary in time for communion with their family. This gives the children a Bible story at their level and it gives parents an opportunity to concentrate on the readings and sermon. Godly Play helps bring in and retain young families at Galilee.

In order for Godly Play to be successful, we need story tellers and assistants. Story tellers present the stories to the children using wooden and felt pieces and scripts provided for you. Assistants are there to provide support. There is training documentation available. You can go on U-tube and search on Godly Play to see videos of people telling Godly Play stories. We can also arrange training sessions.

Even if you are only available for one Sunday, please sign-up. If we all sign-up for one Sunday, the year will be covered. You will get as much out of the time as the children do. We need YOU.

We plan to hold Godly Play weekly during the Sunday service starting September 10th.

To review training material and to sign-up to help, please go to SignUPGenius <https://www.signupgenius.com/go/30e0d4caca923a0f49-godly3>

For questions about Godly Play, contact Susan Olson, 414-690-0676 or olsonmsusan@gmail.com.

Please prayerfully consider this opportunity. Thank you.

Compassion Care

Loss & Living Gathering: Tuesday, September 19 | 3:00 p.m.

Please join us in the Narthex on August 15th at 3:00 p.m. We listen, share, comfort and support each other through the loss process, even though our losses may be different. The Gathering is not limited to the loss of a loved one but includes any loss that affects us emotionally or physically. This could be a loss of a job, the move to a new location, the loss of a dream, a pet, a relationship, a material or physical loss, retirement or a life change. We care for each other, understand and give support. Your faith and insight may have a profound impact on our journey of healing. If you know of someone who might benefit from this living with loss, please invite them to join us.



If you have any questions, please contact Barb Barthel at 262-691-0711.

Partnerships



WHETHER YOU ARE A STUDENT OR A TEACHER, **BRING YOUR BACKPACK, IPAD, LAPTOP OR BRIEFCASE AND RECEIVE A BLESSING AND A TAG FOR YOUR BACKPACK. TAGS IN ENGLISH AND SPANISH WILL ALSO BE GIVEN TO STUDENTS AT LA CASA DE ESPERANZA SCHOOL IN WAUKESHA.**



We will be providing **backpacks, school supplies** and **socks** to our young friends in El Salvador.



If you would like to help out please put a check payable to Galilee in an envelope in the offering plate during the month of September. (Note El Salvador on the check and envelope) Thank you for your consideration! This is a wonderful gracious way for you to be involved in the El Salvador Ministry.



HEALING PRAYER

HEALING PRAYER WILL BE OFFERED DURING HOLY COMMUNION AT WORSHIP SERVICES ON SEPTEMBER 2 & 3.

A graphic showing two hands cupping a red heart.A logo for Pewaukee Food Pantry featuring a basket of food and waves.

PEWAUKEE
FOOD PANTRY

An illustration of various food items like cans of tuna, soups, and pasta.

September 2 & 3

NOISY OFFERING WEEKEND

September 2 & 3

A graphic with a green background, falling gold coins, and a hand dropping a coin into a slot.



2023 FAMILY RIDE RUN WALK
MILES FOR HOPE



QR CODE TO REGISTER
FOR THE EVENT

Outreach For Hope 16th Annual Family Ride Run Walk | Saturday, Sept. 30 Registration is Open

We are excited to tell you about this year's Family Ride Run Walk, our annual event that brings us all together as supporters of Outreach for Hope! This year's theme is *"Miles for Hope"*, the idea that we are all stronger when we go together. Our goal is to help fundraise \$160K for grants to ministries serving neighborhoods experiencing material poverty in the Greater Milwaukee Synod, ELCA - including Galilee's Urban Partner St. Paul's in Milwaukee and Hope Center in Waukesha.

To kick things off, Team Galilee is available for you to register as a bike rider (road or trail ride), 5K fun runner, 2-mile walker, fellowship only participant, virtual rider or volunteer. **There is no registration fee – just pay as you can.** Each family member who registers by 9/25 will receive a free Event T-shirt, Boxed Lunch and Fundraising Page.

Team Galilee will be participating at the Cory Municipal Park site in Dousman. To register + learn more visit OFHRRW.org or contact Jeff Dohlby or Deb Kohler.

To donate on-line go to Team Galilee Fundraising Page.



QR CODE FOR TEAM GALILEE
FUNDRAISING PAGE

Music Ministry

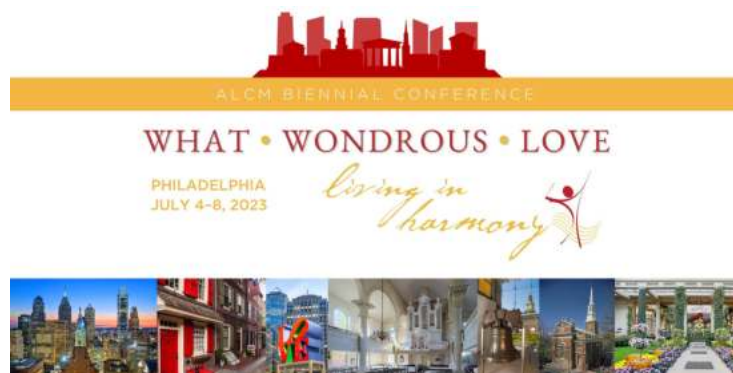


Singers & Ringers, **JOIN US Wednesday, September 6, 2023** from **6:00 p.m. - 7:30 p.m.** for our first information session and gathering for vocal choir and bell choir. **NEW THIS YEAR** is our **Young Artist Series**. This series is an opportunity for our youngest students up to college aged students to be involved in music ministry at Galilee once each quarter. If you or someone you know is interested, *please join us at the information session and gathering on September 6th for more information.*



DeBlaey's Attend ALCM What Wondrous Love - Biennial Conference

In July Ron and I attended the ALCM Biennial conference in Philadelphia. What is ALCM? ALCM stands for Association of Lutheran Church Musicians. This organization is a service and professional organization dedicated to strengthening the ministry of worship and music in the Lutheran church.



This years theme: **What Wondrous Love** was described in this way on the ALCM website:

"Each time the church gathers to pray and sing, we hear the wondrous story of God's divine love revealed in Christ—a love that is deep, broad, high, amazing, and steadfast, that builds up and binds everything together in perfect harmony. Love is our greatest commandment and the source of our song. Or, as the hymnist exclaims: "what wondrous love is this!"

An iconic sculpture of the word "love" stands in the central plaza of a city designed so that its colonial residents and the area's indigenous peoples could live together in harmony. Like the vision of its founder, William Penn, the city's name was the product of peaceful coexistence between two Greek words: Philos (loving) alongside adelphoi (siblings). Philadelphia.

This biennial conference of the Association of Lutheran Church Musicians invites us—through worship, lectures, workshops, and making music together—into deeper reflection about the what, wonder, and love of which the church sings.

We found ourselves in a group of humans who fully embodied this commandment of Christ to "Love" each other. We began and ended each day with a focus on and through worship with one another. The workshops where we dug deeper into our intentional worship not only with each other but with YOU the congregations we serve were filled with learning and leaning into discussions of faith, love, and longing for the possibilities of future days. We covered topics like: A Sacred Trust: Nurturing Healthy Pastor-Cantor Relationships, Choral Conducting and Communication: Full of Grace, Seasoned with Salt, Getting Out of the Rut: Ideas for Introducing a New Song to Young Singers, Composition and Arranging, Handbell Techniques: The Body Is the Instrument, Improvisation: Drawing from Many Streams: Musical Styles in Today's Hymnody, Leading Assembly Song: Band-Led and Contemporary Song, Leading Assembly Song: Organ Emphasis, Music that Makes Community, Percussion Techniques, Technology and Worship just to name a few.

This coupled with tours of the Wanamaker Organ, the Kimmel Center along with the churches where we worshiped made for a long but spiritually fulfilling day.

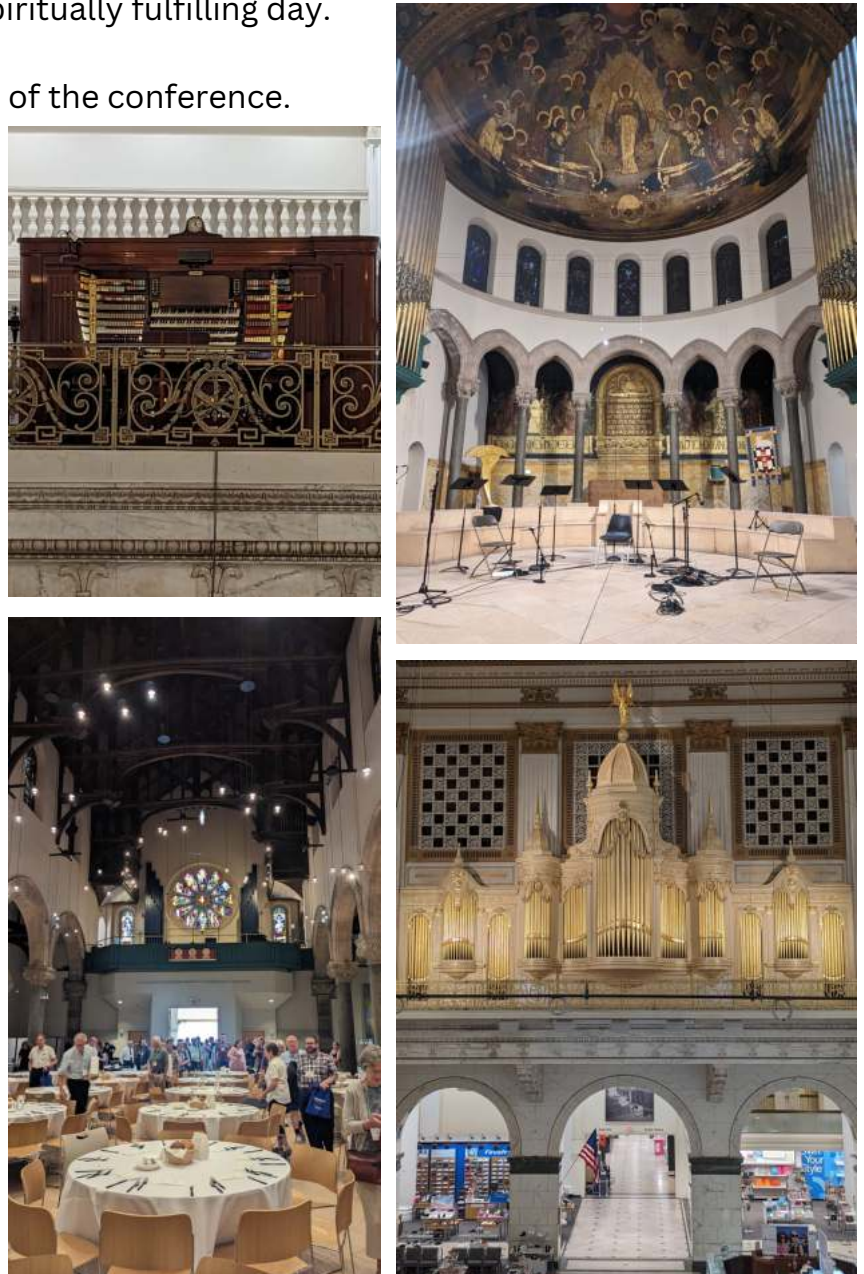
And these are only "some" of the highlights of the conference.

It was "Lovely" always and in all ways.

I can't wait for the next one, 2025!

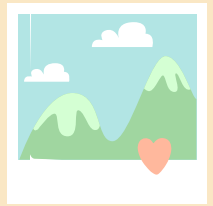
Peace, Love, Joy, and MUSIC!

Patricia





August MEMORIES



Inspired by our just completed book study on **"Unclobber - Rethinking Our Misuse of the Bible on Homosexuality"** by Colby Martin, a small group of Galileans went to Milwaukee's LGBT Community Center to view the "This Is Trans" portrait exhibit. One of the staff members, Ricardo (pictured on left), spent a great deal of time talking with us, sharing his own story and how the Center supports members of the LGBTQIA+ community.

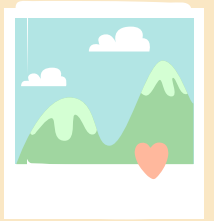


"WHY NOT TIE KNOT?"





August MEMORIES



SCHOOL SUPPLIES
DONATED FOR LA
CASA DE ESPERANZA
SCHOOL IN
WAUKESHA.



WELCOMING OF
NEW MEMBERS



OUTDOOR WORSHIP & CHURCH PICNIC



September Birthdays

- | | | | | |
|--------------------|-------------------|-----------------------|--------------------|----------------------|
| 1 Joan Liu | 6 Kristine Reilly | 12 Kirsten Gahan | 20 Carol Gust | 25 Ruth O'Malley |
| 1 Audrey Schultz | 7 Karen Buelow | 12 Travis Austin | 22 John Gahan | 25 Mary Beth Tornehl |
| 1 Tyler Kiser | 7 Jodie Ro | 13 Linda Kowalewski | 22 Dylan Falter | 26 Mark Glover |
| 2 Talia Piotrowski | 7 Mango Htoo | 14 Carl Spencer | 22 Jill Plesh | 26 Scott Wille |
| 2 Diana Conway | 7 Charles Opie | 15 Beverly Piotrowski | 22 Mariah Glover | 27 Landon Lukomski |
| 4 Nadia Mag | 8 Shee Ro | 15 Thomas Liu | 22 Tess Glover | 28 Michael Olson |
| 4 Ellen Piotrowski | 9 Susan Katt | 16 Patricia Alters | 23 Timothy Graham | 28 Emma Keziah |
| 4 Nick Riegert | 11 Isabelle Barth | 19 Paul Hintze | 23 Judith Corlett | 28 George Slavsky |
| 5 William Keziah | 11 Natalie Barth | 20 Carol Raschka | 24 Thomas Drover | 30 Sarah Spencer |
| 5 Adam Immel | 11 Paw May | 20 Miranda Winkelman | 25 Diane Praeger | |
| 5 Alan Arzberger | 12 Mark Johnson | 20 Tina Sherman | 25 Michael Feldman | |

Prayer Needs

Please keep in your prayers - Patricia Alters, Joal Brinkman, Karen Buelow, Tom Buelow, Jessica Connolly, Judy Corcoran, Judy Corlett, Bev Coshun, Oretha Dueno, Rosalie Finlayson, Donna Frederick, Donna Grorud, Cylie Harris, Paul Hintze Jr., Tilly Johnson, Bill Koehn, Margo Krumnow, Heidi Mag, Ray Mansker, Norma Mielke, Michael Mielke, Helen Mueller, Harper N., Carol Puestow, John Ruf, Cori Ryta, Ken Ryta, Maureen Schwartz, Olivia Taylor, Vi Tremaine, Jim Williams, and Penny Williams.



- Mike Anderson
- Andrew Connolly
- Jeremy Fossier
- Tim Gilestad
- Bill Groth
- Benjamin Maske
- Morgan Mosher
- Andrew Richardson

Are you or someone you know in need of prayer? Simply contact the church office at (262) 691-2380 or email galilee@galileelc.org with your prayer requests.

Ministry & Staff

Ministry Staff

Pastor: Rev. Jennifer Arnold, Interim, email: pastorjennifer@galilleelc.org

Director of Children, Youth & Family Ministry: Jean Nelson, email: jeancyf@galilleelc.org

Director of Music & Worship Accompanist: Patricia DeBlaey, email: patricia@galilleelc.org

Choir Accompanist: Jean Nelson, email: jeancyf@galilleelc.org

Financial Administrative Assistant: Karen Streit, email: finance@galilleelc.org

Office Coordinator: Samantha Scantlin, email: galilee@galilleelc.org

Church office is open Monday–Thursday 8:30-4:30pm

Ministry Coordinators

WELCOMING

Hospitality - Susan Keller & Vivian Dethloff | susieqz2@aol.com & dethloff5@gmail.com

Connecting - Sara Schroeder | tyme4party@yahoo.com

EQUIPPING

Worship & Arts - Diana Conway | dlmc@milwpc.com

Faith Formation - Children | Stephanie Barth | smkey1@hotmail.com

Faith Formation - Confirmation | Doug Dehler | doug6582@yahoo.com

Faith Formation - Adult Education | Bill Braunschweig | bbraunschweig1@gmail.com

Administration - Building & Grounds | Nicholas Riegert | riegs4@sbcglobal.net

Administration - Church Office & HR | Kathy Taylor | htmachine@centurytel.net

Godly Play - Sue Olson | olsonmsusan@gmail.com

SENDING

Partnerships & Global-Gifting - Mary Winter | marywinter1322@gmail.com

Compassion Care - Open

Columbarium - Bill Braunschweig | bbraunschweig1@gmail.com

Leadership Board Members, 2023

Carl Spencer - President | cspencer@digicorp-inc.com

Josh Prins - Vice President | josh.prins@gmail.com

Steve Dethloff - Secretary | dethloff5@gmail.com

Terri Drover - Member at large | terdrover@sbcglobal.net

Mary Dehler - Member at large | biddymarka@gmail.com

Andrea Smith - Treasurer | andreamsmith3@wi.rr.com

SEPTEMBER

SUN

MON

TUE

Wed

THU

FRI

SAT

27	28	29	30	31	1	2
<p><u>9a</u> Worship Service</p> <p><u>11a</u> Church Picnic</p> <p><u>6p</u> Al-Anon/Alateen - Fellow</p>	<p><u>7:30p</u> AA - Fellowship Hall</p>	<p><u>10:30a</u> Test Scheduling</p>	<p><u>8p</u> AA - Room 41</p> <p><u>8p</u> Boy Scouts Troop 87 - Fe</p>	<p>Office Closed</p> <p><u>12p</u> 12 Step Group - Room</p>	<p><u>7:30a</u> Men's Bible Study - F</p> <p><u>5p</u> Worship Service</p>	<p><u>7:30a</u> Men's Bible Study - F</p> <p><u>5p</u> Worship Service</p>
<p>3</p> <p><u>9a</u> Worship Service</p> <p><u>6p</u> Al-Anon/Alateen - Fellow</p>	<p>4</p> <p><u>7:30p</u> AA - Fellowship Hall</p>	<p>5</p> <p><u>6p</u> Information Session & G</p>	<p>6</p> <p><u>8p</u> AA - Room 41</p> <p><u>8p</u> Boy Scouts Troop 87 - Fe</p>	<p>7</p> <p>Office Closed</p> <p><u>12p</u> 12 Step Group - Room</p>	<p>8</p> <p><u>8a</u> Women's Bible Study - G</p> <p><u>5p</u> Worship Service</p>	<p>9</p> <p><u>8a</u> Women's Bible Study - G</p> <p><u>5p</u> Worship Service</p>
<p>10</p> <p>God's work. Our hands. Sun</p> <p>Intergenerational service pr</p> <p>Sunday School</p> <p><u>9a</u> Worship Service</p> <p><u>6p</u> Al-Anon/Alateen - Fellow</p>	<p>11</p> <p><u>7:30p</u> AA - Fellowship Hall</p>	<p>12</p>	<p>13</p> <p><u>11:30a</u> "Go Getters" Service</p> <p><u>8p</u> AA - Room 41</p> <p><u>8p</u> Boy Scouts Troop 87 - Fe</p>	<p>14</p> <p>Office Closed</p> <p><u>12p</u> 12 Step Group - Room</p>	<p>15</p> <p>Office Closed</p> <p><u>12p</u> 12 Step Group - Room</p>	<p>16</p> <p><u>7:30a</u> Men's Bible Study - F</p> <p><u>5p</u> Worship Service</p>
<p>17</p> <p>Sunday School</p> <p><u>9a</u> Worship Service</p> <p><u>6p</u> Al-Anon/Alateen - Fellow</p>	<p>18</p> <p><u>1p</u> Knitters & Crocheters - C</p> <p><u>7:30p</u> AA - Fellowship Hall</p>	<p>19</p> <p><u>3p</u> Loss & Living Gathering.</p>	<p>20</p>	<p>21</p>	<p>22</p>	<p>23</p> <p><u>8a</u> Women's Bible Study - G</p> <p><u>5p</u> Worship Service</p>
<p>24</p> <p>Sunday School</p> <p><u>9a</u> Worship Service</p>	<p>25</p> <p><u>7:30p</u> AA - Fellowship Hall</p>	<p>26</p>	<p>27</p>	<p>28</p>	<p>29</p>	<p>30</p>

Galilee Lutheran Church

N24W26430 Crestview Dr.
Pewaukee, WI 53072

Galilee Lutheran Church | (262) 691-2380 | www.GalileeLC.org



Galilee's monthly calendar is now available on our website. Go to <https://galileelc.org> and click on 'More' at the top of the page, then 'Church calendar' in the drop-down menu.

Join us for Worship
Saturdays at 5:00 pm
Sundays at 9:00 am

Sunday School, Confirmation
&
Adult Education
Sundays at 10:15 am



Galilee Life: Be in it!



Evangelical Lutheran Church in America
God's work. Our hands.