



## KNOWLEDGE SHARING FROM INSIDE AND OUTSIDE THE INDUSTRY

Since the beginning of the year, we participated in some events that provided valuable learnings from inside and outside the industry.

Here's a quick summary of our takeaways.

Overall, the knowledge sharing drove home the importance of the following:

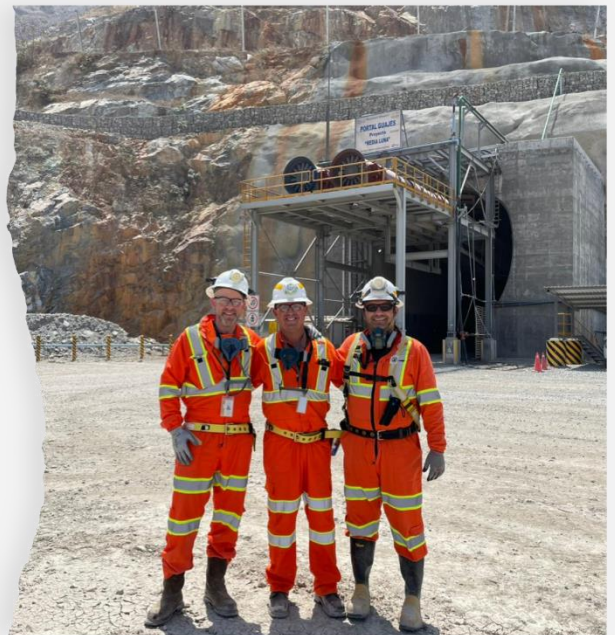
- **Early design planning, project management planning, and regulatory engagement**
- **Operational readiness and BEV program auditing for continuous improvement**
- **Keeping up to date on and incorporating the latest technology updates and improvements**

As more and more mines are committing to BEV projects, mine sites are seeing firsthand how many moving parts need to be in place for everything to run smoothly. At MPL, we're ramping up our **project planning and documentation** and **BEV program auditing** services to support your site on its journey.

### Workplace Safety North – Symposium on Battery Electric Vehicle Safety in Mines

In February, we presented alongside Torex Gold at Workplace Safety North's Symposium on Battery Electric Vehicle Safety in Mines. Our presentation covered big picture safety considerations at their Media Luna site in Guerrero, Mexico. This site is implementing BEV equipment as the core fleet.

During the same event, Agnico Eagle shared lessons learned from recent BEV equipment fires. These lessons learned drove home the importance of having a well thought out **battery management plan across the entire lifecycle**, especially storage, transportation, and end of life. Knowledge sharing on incidents and near misses is so important to the future of BEV implementations. Many thanks to Agnico Eagle for sharing.



A Visit to Torex Gold's Media Luna Mine Site

Symposium proceedings can be found [here](#)

## International Battery Seminar

In March, we attended the International Battery Seminar in Orlando, FL. This event showcases the latest battery technology developments across industries. The presentations had a strong focus on automotive and e-bike applications and battery storage. While the applications discussed were outside of mining, the considerations are similar.

We came away with valuable knowledge on:

- The importance of supply chain management and qualified battery suppliers.
- Key safety features related to the chemistry, design, manufacturing, and final assembly.
- Full lifecycle battery management (performance, maintenance, handling, storage, transportation, end-of-life)
- Emergency response planning (fire safety, rescue team, local fire department)



Further information on the seminar can be found [here](#)

To continue to stay on top of the latest industry knowledge and to ensure we provide the most up-to-date services to our clients, MPL is planning to attend the following events:

[Mining Transformed](#), May 28–29 in Sudbury, Ontario

[Canadian Mining Expo](#), June 5–6 in Timmins, Ontario

[MINExpo](#), September 24–26 in Las Vegas, Nevada

[The Battery Show North America](#), October 7-10 in Detroit, Michigan

### ABOUT

Mayhew Performance LTD. (MPL) specializes in battery electric vehicles and renewable energy and provides technical and operational expertise to deliver exceptional results in collaboration with global mining clients such as Discovery Silver, Glencore, Kinross Gold, Torex Gold, and many others. Founder Mike Mayhew is a subject matter expert in battery technology, operational readiness, implementation, and performance with over 30 years of mining experience. Most notably, he was a pioneer in developing the first 40-tonne battery electric haulage truck from design to site implementation. This unique and practical expertise has enabled MPL to establish a proven track record of supporting and validating BEV programs at all stages.

MPL services include BEV studies, project planning and documentation, BEV program audits, operational readiness, battery management, risk management, health and safety and mine due diligence.

Email: [mike@mayhewformance.com](mailto:mike@mayhewformance.com)

Mobile: 705-923-6298

Web: [www.mayhewperformance.com](http://www.mayhewperformance.com)

