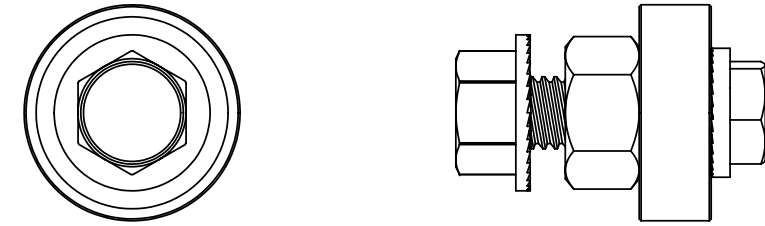
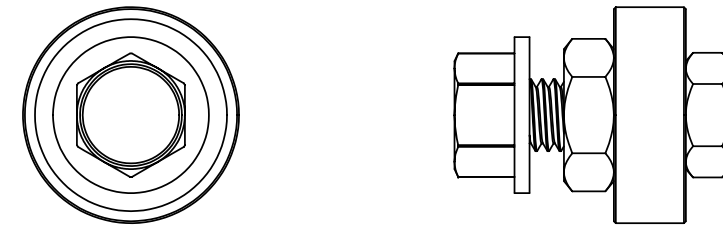


TOP AND SIDE BEARINGS



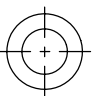
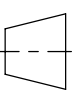
LOWER BEARINGS



SIDE GUIDE BEARINGS INSTALLATION INSTRUCTIONS:

1. INSTALL BEARING ASSEMBLY FINGER TIGHT.
2. USING (2) 9/16" WRENCHES, LOOSEN NUT 1/2 TURN.
3. USING WRENCH, PULL HEAD OF BOLT TOWARDS CRS RAIL.
4. TIGHTEN LOWER NUT.

THIS PROCEDURE WILL PREVENT THE BEARING FROM WALKING AWAY FROM THE RAIL AND WILL ALLOW FOR A PRELOAD OF THE BEARING.

TOLERANCES +/- UNLESS OTHERWISE SPECIFIED		MACHINING	WELDING	FABRICATING	FINISH REQUIREMENTS	USED ON REFERENCE MACHINE/DRAWING:
	DECIMAL	.03, .005	.13	.06		
	ANGLE					
THE INFORMATION CONTAINED IN THIS DRAWING IS THE SOLE PROPERTY OF PRECISION PLASMA LLC. ANY REPRODUCTION IN PART OR WHOLE WITHOUT WRITTEN PERMISSION IS PROHIBITED.						
 	SCALE:	1:2	SIZE: B	DATE	NAME	MATERIAL:
	UNITS:	INCHES	DRAWN	7/15/17	RWC	
	SOLIDS (Y/N):	Y	CHECKED			
PRECISION PLASMA LLC.	TITLE:	MAGNUM 7 GANTRY KIT			DRAWING NUMBER:	REV.
					MAGNUM 7	SHEET 1 OF 1