

Ebook / Catalog

PENN DECKS



High Quality. Affordable Pricing.

BUILD | PRICE | ONLINE

Who We Are

Here at Penn Decks, we strive to deliver the highest quality at the most affordable price for our customers. It is our goal for any of our services to bring people together and enjoy their beautiful home that we created together. Everyone that works on your project shares the same interest.

Owner Operated - Every Job

Our Services

- New Construction Decks
 - Deck Replacements
- Deck Renovations & Resurfacing
- Deck Footings & Piers Installation
 - Deck Repair
- Interlocking Paver Patios
 - Stamp Concrete

Certified Pro Platinum Installers

Serving
Lehigh Valley, PA | Pocono, PA | Philadelphia Areas

We are the original Penn Decks and NOT affiliated with any other company using the Penn name.

Deck Building Learning Information

Learn about deck building and how we install decks in Lehigh Valley and Philadelphia.

Our installations and recommendations are "best practices" from years of experience.

Contact us anytime with questions about your existing deck and new deck project.

Deck Ledger Flashing

Is the first step to building a deck. Installing the deck ledger to a properly flashed building wall.



We flash and waterproof the building wall with a self adhering rubber membrane in a 4-part flashing system. This is a 100% waterproof barrier to protect your homes wall from water intrusion, rot and damage. We remove the siding where the ledger is to be installed, we apply a 16-inch wide rubber membrane to the area, we then install and bolt the ledger board, we then apply another 6-inch wide rubber membrane folded over the ledger board as counter flashing, this is completed by a preformed vinyl or metal cap installed over the counter flashing and ledger board for a safe and water tight ledger connection.

Deck Substructure

Deck substructures and framing come in many different sizes and shapes to fit your needs. A high quality deck substructure is critical for safety and the lifespan of the deck.



Our deck framing exceeds code minimum and are very rigid, giving you peace of mind the deck will be safe and last for years.

The ledger is properly connected to the building wall, we use 1/2" diameter through bolts for the strongest beam and rail post connections, every wood member is secured with metal connector brackets, all outer joists and rim boards are doubled with additional rail post bracing and plate for superior strength.

Joist Tape

Protects the top of the joist, beam, and rim joist from developing rot and wood decay. Acts as a barrier between the wood and galvanized metal such as joist hangers and decking screws.



Extend The Life Of Your Deck

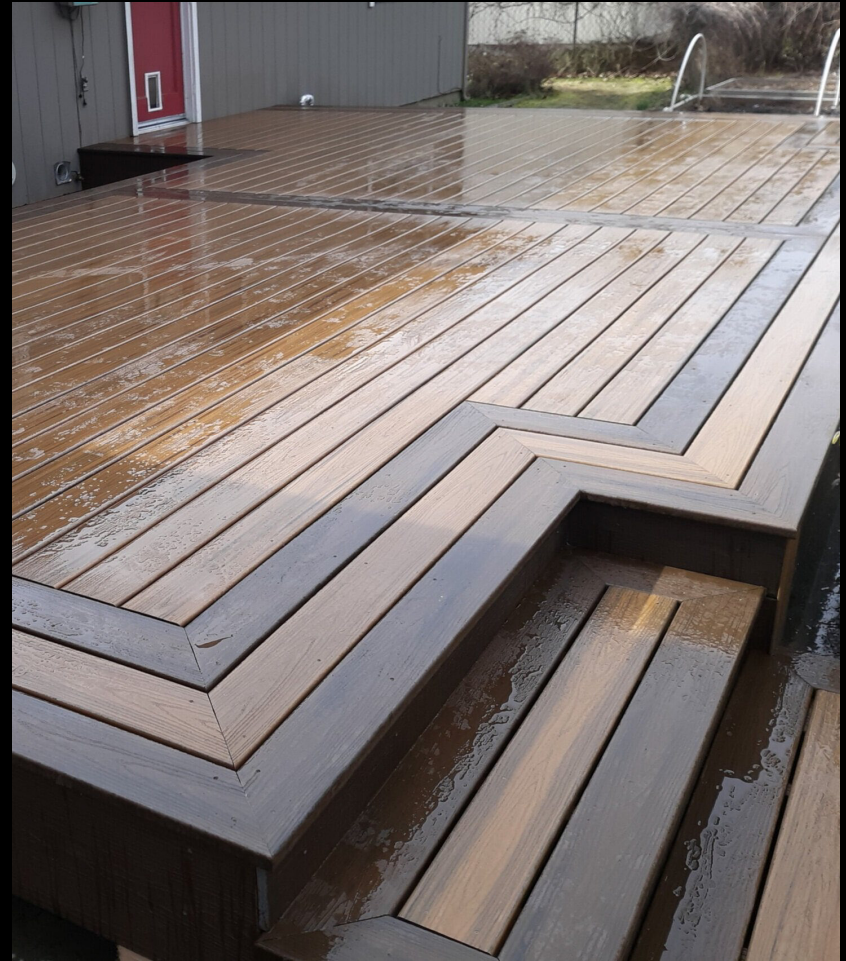
We recommend installing protective joist tape before installing the deck floor. Today's composite materials are designed to last 25-years, so should the substructure supporting it.

Steps

Can be built in many different ways. Our favorites are the picture framed steps which is included in every staircase we build. We also offer a double picture framed installation.



Picture framed steps included in every job.



Double picture frame steps option.

Deck Floor

Can be installed in many different patterns. All of our deck edges are picture framed. Picture framing deck edges with a 1-inch reveal also protects the fascia board on the deck sides from future warping and bowing.



Picture Frame Deck Edges



Breaker Boards "aka" Butt Boards

We recommend and include hidden fasteners for every installation. Deck floors installed using hidden fasteners provide a clean, pleasing appearance without compromising the composite deck board shell and capping.

Deck Fascia

Is used to finish the deck sides, stair sides and stair riser. Deck fascia can be the same color as the deck floor or different color to add a customized look. Fascia boards come in 8-inch width and 12-inch width.



Correct Fascia Installation with 1/2" decking overhang

Completing your deck with fascia adds a complete finished look to the deck. We recommend the deck floor extend further out from the deck edge to protect the fascia below. Approved fascia fasteners are used to compensate for expansion and contraction of the fascia boards.

Deck Railing

Are an integral part of any deck and required for all decks over 24-inches in height. Many styles and color options to choose from that are child and pet proof, and provide safety while defining the deck area for low decks.



Crown Top Railing w/ Aluminum Balusters



Drink Rail Options

Deck railing are available in many styles, shapes and colors from multiple manufacturers. From composite railing, to composite mixed with aluminum balusters, to aluminum railing with horizontal cable and tempered glass infills. Railings should be code compliant for safety and installed to withstand 200 pounds of force, this requires proper framing, additional cross blocking, plates and bolting when building the substructure.

Deck Lighting

Can compliment any outdoor space. Outdoor lighting is low-voltage and powered through a standard receptacle with the use of a low-voltage transformer. Deck lights are available for post caps, post sleeves, stair risers and recessed in the deck floor.



Deck Stair Lights



Post and Rail Lights

Deck Drainage

Can double the outdoor space when decks are at least 4 feet high, ideal for a ground floor patio or sitting area, outdoor bar/kitchen, enclosed shed under the deck or an under deck storage area to keep things dry.



Deck Drainage Trough



Add Dry Space Below The Deck

The benefits of an under deck drainage system is 3-fold. A properly installed drainage systems doubles the outdoor space, protects the deck substructure by keeping it dry - adding years of life to the substructure and allows you to add electrical features such as a ceiling fan, TV and audio protected from the elements.

Deck Footings

Are the most important part of a deck. We provide 3 approved and code compliant footings options for your deck



Typical Concrete Pier



Helical Screw Pile



Diamond Pier System

It is important to calculate tributary area of the deck to determine the correct size, spacing and width of the deck footings/piers. We install 3 types of footings for a deck.

Penn Decks has recieved permit approval from Barry Isett & Associates for the installation and use of Diamond Piers.

FAQ'S

What is your warranty?

We warranty our work for 3-years.

Composite decking manufactures provide additional warranties that cover the products installed for stain and fade.

Composite decking manufacturers will also provide a labor warranty in the event a board or rail component requires changing for certified installers.

As a certified installer, we submit all product warranties on your behalf when the work is completed.

What form of payment & How does it work?

Cash, personal checks, credit cards (Visa, Mastercard, Discover 3.75% processing fee, Amex 4.25% processing fee).

Estimate is emailed to you, simply sign the estimate and give us the okay, and we'll prepare a contract for you.

Deposit is collected for special order material or on the day we start work, 2nd and/or 3rd payments are collected during and/or following job completion.

How long does it take to finish my deck?

A deck with a standard design (rectangle or square) averages 100 square feet a day for completion, so a 400 square foot deck will take 4 days, steps can add 2 days to the project lifecycle depending on the length and design of the stairs/landings.

Do I need a permit and how is it obtained?

Deck resurfacing and deck floor replacements generally do not require a permit.

Any new construction deck higher than 30 inches from the ground does require permits.

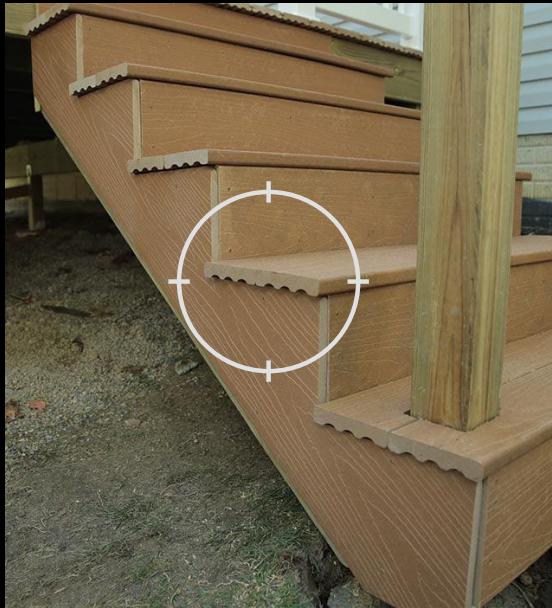
When permits are required, we will prepare and submit all necessary drawings and applications to the local municipality on your behalf. A couple of signatures may be required on your end.

Do I need to be home while you work?

No, you do not need to be home, we all have to work. We only need an active power outlet or cord from your garage and access to a water spigot.

What Not To Do When Building A Deck

We've compiled some valuable information for your deck learning experience



Unfinished Stairs - Exposed Edges

Unfinished stair sides is a cheap, fast and easy way for contractors to get out of the job quickly. Unsightly composite stair edges exposed to the elements will eventually swell, split and discolor.



Uncut Stair Fascia Sides

Uncut stair fascia sides is another cheap, fast and easy way to finish stairs and you may as well save the money on the material if your installer will use this method. Uncut stair fascia sides will trap debris, ice and pool water in the stair corners causing major damage to the integrity of the new stairs and the fascia board to push away.



Correct Stair Finishes

This is what a properly finished step should look like. This is an open step finish, it provides material expansion, water and debris runoff and a professionally installed appearance.

Deck Fascia - The Right And Wrong Way



Correct Fascia Installation with 1/2" decking overhang



Incorrect Fascia Installation set even with top of deck

Completing your deck with fascia will add cost to the deck. Having the fascia installed correctly is important. We recommend the deck floor extend further out from the deck edge and protect the fascia below (photo on the left). Installers should never set the fascia flush with the top of the deck floor, this does save a significant amount of time during the framing and decking installation but soon after installation, debris and ice will warp, bow and break the fascia from the deck sides (photo on the right). There is a recommended specification to install fascia flush with the top of the deck floor to hide the deck edges without picture frame but very few installers follow the manufacturer recommendations on this and just screw it in place.

Deck Floor - The Right And Cheap Way



Correct Deck Board Installation with Hidden Fastener



Incorrect Deck Board Installation - Top Screws

Completing your deck with hidden fasteners is the right way to install composite decking. We recommend the deck floor be installed with manufacturer approved hidden fasteners (photo on the left). Installers should never use decking screws to install composite decking, top screws will crack the composite shell and capping, the screw will leave a mushroom at the surface causing water to settle in the screw head and leave a bumpy surface (photo on the right), top screwing composite decking voids much of the warranty when not using approved fasteners and predrilling.

Deck Edges - The Right and Wrong Way



Incorrect Deck Edge Installation



Correct Deck Edge Installation

Sometimes you get what you pay for and sometimes you don't get what you think you paid for. We're surprised as to how many of the top marketed deck installers in our area post photos (left photo) of finished projects and we see this type of poor installation with unfinished edges. Ask your deck installer if the deck edges will be picture framed and professionally finished. If it becomes an extra charge, something isn't right. All of the deck floors we install include a finished picture framed edge with the right material to finish the edge!

PENN DECKS

We hope the information provided helps you with your deck project for the best installation possible.

Drop us a line anytime for installation services and questions.

We're happy to help!