

**REPORT  
PRE-DEMOLITION ASBESTOS  
AND LEAD PAINT SURVEY  
LOS ANGELES CITY  
DEPARTMENT OF  
RECREATION AND PARKS -  
EL SERENO RECREATION  
CENTER  
4721 KLAMATH STREET  
LOS ANGELES,  
CALIFORNIA**

**URS JOB No.  
29405516.10000  
OCTOBER 4, 2011**





October 4, 2011

Mr. David Attaway  
Environmental Supervisor  
Los Angeles City Department of Recreation and Parks  
221 N Figueroa Street  
Los Angeles, California 90012  
david.attaway@lacity.org

**SUBJECT: PRE DEMOLITION ASBESTOS, LEAD PAINT, AND HAZARDOUS  
MATERIALS ASSESSMENT  
EL SERENO RECREATION CENTER COMMUNITY BUILDING  
4721 KLAMATH STREET  
LOS ANGELES, CA  
URS PROJECT NO. 29405516**

Dear Mr. Attaway:

URS is pleased to submit this report for the above-referenced site. We appreciate the opportunity to provide environmental services to the Los Angeles City Department of Recreation and Parks. Please contact us at (213) 996-2200 if you have any questions or require further assistance.

Very truly yours,

**URS CORPORATION AMERICAS**

A handwritten signature in black ink that reads 'DB Stott'.

Debra B. Stott, P.G., REA  
Principal Geologist

**TABLE OF CONTENTS**

<b><u>SECTION</u></b>	<b><u>PAGE</u></b>
<b>1.0 INTRODUCTION</b> .....	<b>1-1</b>
1.1 Site Background.....	1-1
1.2 Objectives and Scope of Work .....	1-1
1.2.1 Task 1 - Review of Previous Studies .....	1-1
1.2.2 Task 2 - Asbestos-Containing Materials Survey .....	1-1
1.2.3 Task 3 - Lead-Based Paint Survey.....	1-2
1.2.4 Task 4 - Polychlorinated Biphenyl Survey .....	1-2
1.2.5 Task 5 - Hazardous Materials/Chemical Survey .....	1-2
1.2.6 Task 6 - Report .....	1-2
<b>2.0 PRE-DEMOLITION SURVEY</b> .....	<b>2-1</b>
2.1 Building Description.....	2-1
2.2 Pre-Demolition Asbestos Survey .....	2-1
2.3 Pre-Demolition Lead-Based Paint Survey .....	2-2
2.4 Pre-Demolition Polychlorinated Biphenyl Survey .....	2-3
2.5 Pre-Demolition Hazardous Materials/Chemical Survey.....	2-3
<b>3.0 CONCLUSIONS AND RECOMMENDATIONS</b> .....	<b>3-1</b>
3.1 Asbestos-Containing Materials.....	3-1
3.2 Lead-Based Paint .....	3-1
3.3 Polychlorinated Biphenyls .....	3-2
3.4 Hazardous Materials/Chemicals .....	3-2
<b>4.0 LIMITATIONS</b> .....	<b>4-3</b>
<b>5.0 REFERENCES</b> .....	<b>5-1</b>

# Pre-Demolition Asbestos and Lead Paint Survey

---

## Tables

Table 1	Summary of Asbestos Sampling Results
Table 2	Summary of Lead-Based Paint Sampling Results
Table 3	Asbestos Bulk Sampling Data Sheets
Table 4	Lead-Based Paint Bulk Sampling Data Sheets

## Figures

Figure 1	Site Location Map
Figure 2	Asbestos Sampling Locations
Figure 3	Lead-Based Paint Sampling Locations

## Appendices

Appendix A	Photographs
Appendix B	Asbestos Laboratory Analytical Reports and Chain-of-Custody Records
Appendix C	Lead Paint Laboratory Analytical Reports and Chain-of-Custody Records

# **Pre-Demolition Asbestos and Lead Paint Survey**

---

## **1.0 INTRODUCTION**

URS Corporation (URS) has prepared this report for a pre-demolition survey for asbestos-containing materials (ACM), lead-based paint (LBP), polychlorinated biphenyls (PCBs), and hazardous materials on behalf of the Los Angeles City Department of Recreation and Parks for the Community Building at the El Sereno Recreation Center located at 4721 Klamath Street in Los Angeles, California (Site) (Figure 1). A small office structure across the terrace is associated with the Community Building.

The pre-demolition survey consisted of a review of available building information, visual inspection of the building, visual inspection of lighting ballasts, and sampling and laboratory analysis of bulk samples of suspect building materials. The objectives of the pre-demolition survey were to observe, locate, and evaluate the condition of suspected ACM, LBP, and PCBs before demolition of the building. The survey objectives also included a visual survey for hazardous materials and/or chemicals.

Tables 1 and 2 provide a summary of the ACM and LBP sampling results. The bulk asbestos sampling data are provided in Table 3 and bulk LBP sampling data are provided in Table 4. Site photographs are included in Appendix A. Laboratory results and chain-of-custody records are provided in Appendices B and C.

### **1.1 SITE BACKGROUND**

The Community Building that is the subject of this survey is located at 4721 Klamath Street in Los Angeles, California. The building is part of the El Sereno Recreation Center and will be demolished in preparation for possible redevelopment. The Community Building has been closed to the public for a number of years and is currently being used as a park maintenance equipment storage area.

### **1.2 OBJECTIVES AND SCOPE OF WORK**

The objectives of the pre-demolition survey were to assess the building for the potential presence of ACM, LBP, PCBs, and hazardous materials/chemicals. To meet these objectives, the following scope of work was conducted:

#### **1.2.1 Task 1 - Review of Previous Studies**

URS was not provided with any previous asbestos or lead-based paint studies of the building. URS was provided with copies of plans for the Community Building.

#### **1.2.2 Task 2 - Asbestos-Containing Materials Survey**

The following tasks were performed as part of the ACM survey:

- ◆ A walk-through of the building was conducted to assess homogeneous areas of suspected ACM;
- ◆ Bulk samples of friable and non-friable suspect ACM were collected for laboratory analysis. Minimal intrusive sampling techniques, such as cutting existing carpet to locate floor coverings and cutting into walls to sample materials, were used in this survey. Small incisions were made in closets, behind doors, or other inconspicuous locations to assess the presence of suspect ACM.

## **Pre-Demolition Asbestos and Lead Paint Survey**

---

Repair of the ceiling tiles, walls and other materials where sampling occurred was not included in the scope of work. The suspect ACM was assessed based on the type, condition, and location of each sample; and

- ◆ The samples, accompanied by a chain-of-custody form, were submitted to a laboratory for analysis of asbestos content. The laboratory was certified by the American Industrial Hygiene Association (AIHA) and participates in the National Voluntary Laboratory Accreditation Program (NVLAP).

### **1.2.3 Task 3 - Lead-Based Paint Survey**

The following tasks were performed as part of the LBP survey:

- ◆ A walk-through of the building was conducted to assess areas of suspected LBP based on United States Environmental Protection Agency (EPA) guidelines;
- ◆ Bulk samples of suspect LBP were collected for laboratory analysis in accordance with United States Department of Housing and Urban Development (HUD) Guidelines for the Evaluation and Control of Lead-Based Paint Hazards in Housing (June 1995). Repair of areas damaged during sampling was not included in the scope of work; and
- ◆ The samples, accompanied by a chain-of-custody form, were submitted to a laboratory for analysis of lead. The laboratory was certified by the American Industrial Hygiene Association (AIHA) and participates in the Environmental Lead Laboratory Accreditation Program (ELLAP).

### **1.2.4 Task 4 - Polychlorinated Biphenyl Survey**

The following task was performed as part of the PCB survey:

- ◆ Between 10 and 20 percent of the lighting ballasts were visually examined. The inspector dismantled the light fixtures in order to check them for the “PCB-free” label required on ballasts not containing PCBs. The results of the visual inspection were recorded in field notes.

### **1.2.5 Task 5 - Hazardous Materials/Chemical Survey**

The following task was performed as part of the hazardous materials/chemical survey:

- ◆ A walk-through of the building and associated structures was conducted to identify the presence of cans and containers suspected of containing hazardous materials. Locations of suspect containers were recorded in field notes.

### **1.2.6 Task 6 - Report**

This report was produced to summarize the investigation methodology, field activities, laboratory testing procedures, results, and conclusions and recommendations for future actions. The report also contains diagrams showing sampling locations, photographs, and tables detailing the locations, condition, and estimated quantity of confirmed ACM, LBP, PCBs, and other hazardous materials and/or chemicals.

## **2.0 PRE-DEMOLITION SURVEY**

### **2.1 BUILDING DESCRIPTION**

Built in late 1949, the Community Building is a single-story, wood frame stucco structure totaling approximately 3,850 square feet. Inside the building are two restrooms, a craft room, six storage rooms, a kitchen area, an auditorium area with a stage, a water heater closet, and an equipment room. A small separate wood frame structure identified as the “office” structure and measuring approximately 13 feet by 9 feet is located across the terrace from the Community Building. The roof of the Community Building extends over the terrace. The floors of the building and office are concrete slab-on-grade. The roof system is a multi-ply tar/felt membrane applied to a wood deck. The mineral cap sheet is also used as the flashing felt along the parapet and equipment curbs. The multi-ply tar/felt roof is in poor condition.

The roof of the Community Building is supported by painted steel beams. The forced air heating system is located in the equipment room (the office has no heating system). The heating ductwork is covered with an asbestos insulation material. The ceiling and walls are insulated with fiberglass materials. The exterior walls consist of painted stucco and corrugated asbestos cement boards and the interior walls of the Community Building are constructed with wood/metal studs and plaster with painted skim coat material. Floor surfaces in the restrooms are covered with ceramic tiles. The auditorium, equipment, and craft room floors are covered with 12-inch by 12-inch vinyl tiles. The kitchen and office floors are covered with 9-inch by 9-inch vinyl tiles. The ceilings in the storerooms/closets and restrooms are covered with painted drywall materials. The ceilings in the auditorium and equipment storage room are covered with 1-foot by 1-foot ceiling tiles. Fiberglass insulation materials were observed on the hot water lines attached to the hot water heater.

### **2.2 PRE-DEMOLITION ASBESTOS SURVEY**

Mr. Ronald Miller of URS conducted a pre-demolition ACM survey of the buildings on August 19, 2011. Mr. Miller is a CAC in the State of California (Certification No 92-0470) with the credentials required by the Asbestos Hazard Emergency Response Act (AHERA). The survey followed EPA guidelines (EPA, 1985). Each room was evaluated and samples were collected of accessible homogeneous materials used in the insulation, ceilings, walls and floors. Potentially friable and non-friable ACM were visually identified and samples were collected for analysis. Bulk samples of each type of suspect building material were collected and placed in sample bags that were labeled with the time, date, location, and condition of each sample. Chain-of-custody forms were completed and accompanied the samples to the laboratory. Sample locations were recorded on facility sketch maps.

The samples were submitted to AmeriSci Los Angeles Laboratory (AmeriSci) for analysis of asbestos content by Polarized Light Microscopy (PLM) (Method EPA-600/R-93/116) as described in “The Interim Method for Determination of Asbestos in Bulk Insulation Samples” (EPA, December 1982). The PLM method utilizes the optical properties of minerals to identify the selected constituent. The use of this method enables identification of the type and the percentage of asbestos in a given sample. The asbestos detection limit of the PLM method is 0.1 percent (0.1%) by volume. The EPA National Emission Standards for Hazardous Air Pollutants (NESHAP) regulation recognizes a material containing greater

## **Pre-Demolition Asbestos and Lead Paint Survey**

---

than 1 percent (>1%) asbestos as ACM; however, in the State of California materials containing greater than 0.1 % asbestos are considered to be ACM. For a building material to be considered non-ACM in the State of California, all of the suspect homogeneous bulk samples collected must have tested negative (<0.1%) for asbestos. For a building material to be considered an ACM, only one sample must have tested positive (>0.1%) for asbestos.

URS collected a total of 84 bulk samples from the Community Building and office. The sample locations are shown on Figure 2 and the analytical results of the survey are summarized in Table 1. Table 3 summarizes the asbestos bulk sampling data such as the location of the sample, the type of material sampled, condition, and the percentage of asbestos found in the sample. Asbestos laboratory analytical results and chain-of-custody records are included as Appendix B.

The following building materials are considered ACM:

- ◆ Transite vent pipes located on the roof;
- ◆ Roofing mastic
- ◆ Transite panels located on the exterior of the Community Building and office;
- ◆ Stucco material located on the exterior of the Community Building and office;
- ◆ 9-inch by 9-inch salmon-colored vinyl floor tiles and mastic located in the office;
- ◆ Cove base mastic material located throughout the building;
- ◆ White insulation material covering the heating ventilation air-conditioning (HVAC) ducting located in the mechanical room; and
- ◆ 9-inch by 9-inch green vinyl floor tiles located in the kitchen area.

No other asbestos was detected in the remaining samples collected from the exterior or interior of the building.

### **2.3 PRE-DEMOLITION LEAD-BASED PAINT SURVEY**

URS performed a pre-demolition LBP survey at the Community Building on August 19, 2011 to assess the degree, presence, location, and type of LBP hazards. The survey was conducted by Mr. Ron Miller, State of California Department of Health Services Certified Lead-Based Paint Inspector/Assessor # 5228 (IA).

Bulk paint samples were collected in accordance with HUD Guidelines and were used to identify LBP materials for worker protection and waste disposal. The sampling instruments were decontaminated after each use. The sampler wore gloves to collect the samples and spray-misted the area before scraping the paint. The paint was scraped from the surface of the interior or exterior building components, and the chips were placed in plastic sample bags that were labeled with the date, time, and location. Chain-of-custody forms were completed and accompanied the samples to the laboratory. The samples were submitted to AmeriSci Los Angeles Laboratory (AmeriSci) for analysis of lead content by atomic absorption (AA) in accordance with EPA Method 7420/3050, and NIOSH Method 7082 (modified). Bulk



## **Pre-Demolition Asbestos and Lead Paint Survey**

---

paint samples containing concentrations greater than 100 parts per million (ppm) lead (0.01 percent by weight) are considered to be LBP.

URS collected 31 bulk paint samples from the Community Building and office. The sample locations are shown on Figure 3, and the analytical results of the survey are summarized in Table 2. Table 4 summarizes the LBP sampling data such as the sample number, the location of the sample, the type of material sampled, condition, and the lead concentration found in each sample. Laboratory analytical results and chain-of-custody records are included as Appendix C.

The following building components are considered to contain LBP:

- ◆ Tan paint located on the exterior of the building including the office;
- ◆ Tan paint located on the exterior wood wall by the tennis court;
- ◆ Tan paint located on the exterior wood trim materials including the office;
- ◆ Tan paint located on the window frames and sill materials including the office;
- ◆ Tan paint located on the interior wall trim by the door and window materials including the office;
- ◆ Off-white paint located on the interior walls of the building;
- ◆ Off-white trim paint located on the interior of the building;
- ◆ Yellow ceramic tiles located on the walls of the men's bathroom;
- ◆ Pink ceramic tiles located on the walls of the women's restroom;
- ◆ Light green paint located on the kitchen wall;
- ◆ White paint located on the metal "I" beams supporting the roofing system; and
- ◆ Off-white paint located on the walls of the men's and women's restrooms.

Interior and exterior paint containing less than 400 ppm of lead does not pose a lead hazard to the workers during the time of demolition activities. However, the interior and exterior paints containing greater than 400 ppm of lead may pose a hazard to the workers and will require special handling during removal. As long as the paint is adhered, no special disposal is required.

### **2.4 PRE-DEMOLITION POLYCHLORINATED BIPHENYL SURVEY**

URS performed a pre-demolition PCB survey at the building on August 19, 2011. Mr. Miller examined a total of 10 lighting ballasts in the building by dismantling the lighting unit in order to check the ballasts for the "PCB-free" label required on ballasts not containing PCBs. Nine of the ballasts inspected had the "PCB-free" label on the fixture. One of the ballasts inspected in the kitchen area did not have the "PCB-free" label on the fixture.

### **2.5 PRE-DEMOLITION HAZARDOUS MATERIALS/CHEMICAL SURVEY**

A pre-demolition hazardous materials/chemical survey was conducted at the building on August 19, 2011. During the survey, Mr. Miller observed small containers of cleaning products, paint, lubricants, hydraulic fluids and oils. Three mercury thermostat switches were observed attached to the walls inside the

## **Pre-Demolition Asbestos and Lead Paint Survey**

---

building. According to Department of Recreation and Parks personnel, arrangements will be made to have the containers of cleaning products, oil, paints, hydraulic fluid, and lubricants removed and disposed of prior to demolition. The mercury switches can be removed by the demolition contractor.

## **3.0 CONCLUSIONS AND RECOMMENDATIONS**

### **3.1 ASBESTOS-CONTAINING MATERIALS**

Friable ACM was found in the white insulation material covering the HVAC ducting located in the equipment room. Non-friable ACM was found in the transite vent pipes located on the roof, roofing mastic, exterior transite panels, exterior stucco material, 9-inch by 9-inch salmon-colored vinyl floor tiles and mastic located in the office, the cove base mastic material located throughout the building, and 9-inch by 9-inch green vinyl floor tiles located in the kitchen area.

However, this does not necessarily mean that the health of the occupants is currently endangered. If ACM remains in good condition and is not disturbed, exposures to asbestos are expected to be negligible. However, when ACM deteriorates, or is disturbed or damaged, such as during renovation or demolition operations, asbestos fibers may be released creating a potential health hazard for building occupants and construction personnel. The materials were observed to be in reasonably good condition.

URS recommends the following:

- ◆ Remove and dispose of ACM prior to demolition using a licensed abatement contractor in accordance with federal, State, and local regulations and ordinances;
- ◆ Prepare bid documents and specifications for the renovation project to control the project and ensure lawful removal techniques are used; and
- ◆ Have a third party provide renovation oversight to document that the contractor complies with the specifications, proper protective equipment is used, and proper disposal procedures are followed.

In addition to these recommendations, the following precautions should be taken prior to repair or maintenance activities involving less than 100 square feet of ACM:

- ◆ Do not cut, sand, or drill materials containing asbestos;
- ◆ Prior to initiating maintenance and renovation activities that would disturb the ACM, thoroughly wet the area to prevent possible release into the air;
- ◆ Remove dust with a high-efficiency particulate air (HEPA) vacuum or wet wipe with disposable towels; and
- ◆ Follow federal, State, and local regulations for proper disposal of ACM.

### **3.2 LEAD-BASED PAINT**

Elevated concentrations of lead were found in the interior and exterior paints of the building and office structure. The painted surfaces are in poor to good condition and the paint is flaking or peeling in many locations on the building. The lead concentrations of the paints ranged from 340 to 70,000 mg/kg. If the LBP is removed from the building substrate, then testing of the lead should be performed prior to disposal. Subcontractors should be aware of LBP locations, the hazards of LBP, and proper handling/cleaning techniques.

## **Pre-Demolition Asbestos and Lead Paint Survey**

---

The presence of LBP does not necessarily mean that the health of the occupants is endangered. If the LBP remains in good condition and is not disturbed, exposures to lead are expected to be negligible. However, when LBP deteriorates, or is disturbed or damaged, such as during demolition or renovation operations, lead dust may be released, creating potential health hazards for building occupants and maintenance personnel.

URS recommends the following:

- ◆ The LBP on the exterior of the building and office structure that is in good condition does not need to be abated prior to demolition. However, flaking or peeling LBP should be removed by a licensed lead abatement contractor and disposed following federal, State, and local regulations. LBP may be disposed as construction debris as long as it remains on the substrate;
- ◆ The demolition contractor should implement precautions to comply with OSHA 29 CFR 1926.62, Lead in Construction; and
- ◆ Dispose of all painted building materials as construction debris and do not permit the demolition contractor to recycle the painted wood in accordance with federal, State, and local regulations for the proper disposal of LBP.

In addition to the above-mentioned recommendations, the following precautions should be taken prior to any repair or maintenance activities that would disturb LBP:

- ◆ Do not cut, sand, or drill materials containing LBP;
- ◆ Prior to initiating demolition activities that would disturb the LBP, wet the area to prevent possible release into the air;
- ◆ Remove dust with HEPA vacuum or wet wipe with disposable towels; and
- ◆ Follow federal, State, and local regulations for proper disposal of LBP.

### **3.3 POLYCHLORINATED BIPHENYLS**

Of the 10 lighting ballasts inspected at the building, 9 had the “PCB-free” label. Therefore, less than ten percent of the lighting ballasts are expected to contain PCBs. One of the ballasts inspected on the interior of building from the kitchen area did not have the “PCB-free” label on the fixture. Lighting ballasts without labels should be considered PCB containing unless there is documentation that the lights were installed after 1979 when the use of PCBs was banned in the United States.

### **3.4 HAZARDOUS MATERIALS/CHEMICALS**

Small containers of cleaners, oil, paint, and lubricants were identified in the storage areas of the building. Three mercury thermostats were observed attached to the interior walls. The Department of Recreation and Parks facility personnel would remove the cleaners and other hazardous materials before the building is demolished. The mercury switches can be removed by the demolition contractor.

### **4.0 LIMITATIONS**

This pre-demolition report has been prepared for the exclusive use of Los Angeles City Department of Recreation and Parks. The conclusions in this report are professional opinions based on the indicated data described in this report. They are intended only for the purpose, the location, and the project indicated. The survey for ACM, LBP, PCBs, and other hazardous materials was intended to provide data sufficient for the purpose of renovation/demolition of the Community Building at the El Sereno Recreation Center at 4721 Klamath Street in Los Angeles, California. Buried or otherwise inaccessible ACM and LBP may not have been identified. The interpretations and conclusions contained in this report are based on the expertise and experience of URS in conducting similar assessments at similar sites. In preparing this report, URS has relied, in part, on findings from prior consultants. Accordingly, URS accepts no responsibility for any deficiency, misstatements, or inaccuracy contained in this report that may result from misstatements, inaccuracies, omissions, misrepresentations, or fraudulent information provided in the referenced reports.

Changes in applicable standards may occur as a result of legislation or the broadening of knowledge. Accordingly, the findings of this report may be invalidated, wholly or in part, by changes beyond our control. Opinions and judgments expressed herein, which are based on our understanding and interpretation of current regulatory standards, should not be construed as legal opinions.

URS' objective is to perform our work with care, exercising the customary thoroughness and competence of environmental and engineering consulting professionals, in accordance with the standard for professional services for a national consulting firm at the time these services are provided. It is important to recognize that even the most comprehensive scope of services may fail to detect all environmental liabilities on a particular site.

# **Pre-Demolition Asbestos and Lead Paint Survey**

---

## **5.0 REFERENCES**

- California Code of Regulations, Title 8, Chapter 3.2, Subchapter 2, Article 2.5, Registration-Asbestos-related Work. Section 341.6, Registration Requirements.
- California Code of Regulations, Title 8, Chapter 3.2, Subchapter 2, Article 2.5, Registration-Asbestos-related Work. Section 341.9, Notification to the Division-Asbestos Related Work.
- California Code of Regulations, Title 8, Section 1529, Asbestos, and associated Appendices.
- U.S. Department of Labor: OSHA, U. S. Occupational Safety and Health Administration – General Industry Standard. Chapter XVII. Asbestos. 29 CFR 1910.1001. June 1986; Amended, September 1988.
- U.S. Department of Labor: OSHA Regulation. 29 CFR 1910.134 – Respiratory Protection Standard. June, 1974.
- U.S. Department of Labor: OSHA, U. S. Occupational Safety and Health Administration– Construction Industry Asbestos Standard. Chapter XVII. Asbestos. 29 CFR 1910.1101, 1994.
- USEPA, 1984. U.S. Environmental Protection Agency. National Emission Standards for Hazardous Air Pollutants. 40 CFR 61. April 5, 1984.
- USEPA, 1985. U.S. Environmental Protection Agency. Asbestos in buildings: Simplified sampling scheme for surfacing materials. Washington DC: USEPA. EPA 560/5-85-030A. ("Pink Book")
- USEPA, 1985. U.S. Environmental Protection Agency. Guidance for controlling asbestos-containing materials in buildings. Washington DC: EPA 560/5-85-024. ("Purple Book")
- USEPA, 1986. U.S. Environmental Protection Agency. A guide to respiratory protection for the asbestos abatement industry. Washington DC: EPA 560/OPTS-86-001.
- USEPA, 1987. U.S. Environmental Protection Agency. Asbestos Abatement Projects; Worker Protection, Final Rule. 40 CFR 763. February 1987, Revised July 1, 1997.
- USEPA, 1987. U.S. Environmental Protection Agency. Asbestos-Containing Materials in Schools; Final Rule and Notice. 40 CFR 763. Federal Register, October 30, 1987, Revised July 1, 1997.
- USEPA, 1988. EPA Study of Asbestos-Containing Materials in Public Buildings: A Report to Congress. February, 1988.
- USEPA, 1989. Asbestos Ban and Phaseout Rule. 40 CFR 763.160 to 763.179. Federal Register, July 12, 1989.
- USEPA, 1989. Transmission Electron Microscopy Asbestos Laboratories: Quality Assurance Guidelines. Washington DC: EPA 560/5-90-002.

## **Pre-Demolition Asbestos and Lead Paint Survey**

---

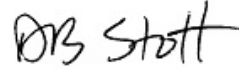
Should you have any questions or comments, please do not hesitate to contact Ron at (714) 835-6886.

Respectfully submitted,

**URS CORPORATION**



Ronald Miller, CAC, REA  
California Certified Asbestos Consultant



Debra Stott  
Project Manager

## **Tables**



**TABLE 1**  
**SUMMARY OF ASBESTOS SAMPLING RESULTS**  
**EL SERENO RECREATION CENTER COMMUNITY BUILDING**  
**LOS ANGELES, CALIFORNIA**

<i>Material</i>	<i>Location</i>	<i>Sample numbers</i>	<i>Survey Results</i>
Rolled Roofing materials/felt	Roof	A1, A2, A4, A5, A6	No Asbestos Detected
<b>Roof Mastic</b>	<b>Roof</b>	<b>A3</b>	<b>4% and 5% chrysotile</b>
<b>Transite Pipe</b>	<b>Roof</b>	<b>A10</b>	<b>20% chrysotile</b>
<b>Rolled Roofing over storage room</b>	<b>Roof</b>	<b>A7, A8, A9</b>	<b>5% chrysotile</b>
Ceiling Insulation	Ceiling	A11	No Asbestos Detected
<b>Transite siding</b>	<b>Exterior</b>	<b>A12, A15</b>	<b>20% chrysotile</b>
<b>Stucco Exterior</b>	<b>Exterior</b>	<b>A13, A16</b>	<b>Trace - &lt; 1% tremolite</b>
Stucco Barrier Paper	Exterior	A14, A17	No Asbestos Detected
Rolled Roofing materials	Office	A18, A19, A20	No Asbestos Detected
<b>Salmon VFT and mastic</b>	<b>Office</b>	<b>A21, A22, A23</b>	<b>3% chrysotile</b>
Plaster w skim coat	Office	A24, A25	No Asbestos Detected
Drywall Material	Office	A26, A27	No Asbestos Detected
<b>Cove base w mastic</b>	<b>Office</b>	<b>A28,</b>	<b>Trace - &lt; 1% tremolite</b>
<b>Transite Panel ½ inch</b>	<b>Office</b>	<b>A29</b>	<b>20% chrysotile</b>
<b>Transite Panel 1/8 inch</b>	<b>Office</b>	<b>A30</b>	<b>20% chrysotile</b>
Exterior Stucco	Exterior	A31-A37	No Asbestos Detected
Window Putty	Windows	A38, A39, A40, A55	No Asbestos Detected
White 12x12 Ceiling tiles w holes	Inside	A41, A42, A43	No Asbestos Detected
White 12x12 Ceiling tiles w slots	Inside	A44, A45, A46	No Asbestos Detected
White 12x12 Ceiling tiles solid	Inside	A47, A48, A49	No Asbestos Detected
Stage Curtain – high, side window	Inside	A50, A51	No Asbestos Detected
Tan 12 x 12 VFT and mastic	Inside	A52, A53, A54	No Asbestos Detected
Plaster w skim coat	Inside	A56-A60	No Asbestos Detected
Brown cove base	Inside	A61-A63,	No Asbestos Detected
<b>9x9 Green VFT w mastic</b>	<b>Inside</b>	<b>A64, A65,A66</b>	<b>3% chrysotile</b>
Grey Fiber at electrical panel	Inside	A67	No Asbestos Detected
Pink counter Top	Inside	A68	No Asbestos Detected
Black mastic on tile	Inside	A69,	No Asbestos Detected
12x12 ceiling tile mastic	Inside	A70, A71, A72	No Asbestos Detected
Drywall Material	Inside	A73,	No Asbestos Detected
Drywall Material w black paper	Inside	A74, A75, A76	No Asbestos Detected
<b>White HVAC duct covering</b>	<b>Inside</b>	<b>A77, A78, A79</b>	<b>60% Chrysotile</b>
Drywall Backer Board	Inside	A80-A84	No Asbestos Detected

**BOLD indicates asbestos detected**

**TABLE 2**  
**SUMMARY OF LEAD SAMPLING RESULTS**  
**EL SERENO RECREATION CENTER COMMUNITY BUILDING**  
**LOS ANGELES, CALIFORNIA**

<i>Community Building</i>	<i>Sample Numbers</i>	<i>Survey Results (ppm)</i>
Tan Paint Located on the Exterior of the Building	L1, L2, L3, L4 L5	<b>340 to 22,000</b>
Tan Paint Located on the Exterior of the office structure	L6, L7	<b>810 to 6,400</b>
Tan Paint on wood wall near tennis court	L8, L9	<b>350 to 580</b>
Tan Paint on trim canopy	L10	<b>14,000</b>
Tan paint on window sill	L11	<b>8,500</b>
Tan paint on office window sill	L13	<b>35,000</b>
Tan paint on building trim over auditorium door	L12	<b>52,000</b>
Tan interior paint office structure	L15, L16	<b>5,200 to 9,300</b>
Tan paint on office structure trim	L14	<b>70,000</b>
Off white Interior paint	L17-L22	<b>480 to 2,900</b>
Pink Tile Women's restroom	L23	<b>860</b>
Yellow Tile Men's restroom	L24, L25	<b>4,400 to 7,400</b>
Off white/pink paint women's restroom	L26	<b>6,400</b>
Off white paint Men's restroom	L27	<b>5,200</b>
Green paint kitchen	L28	<b>5,200</b>
White paint steel beam	L29, L30	<b>2,300 to 7,400</b>
White paint interior hall	L31	<b>5,900</b>

PPM - parts per million

## TABLE 3 ASBESTOS BULK SAMPLING DATA SHEETS

Project: El Sereno Community Building  
 Address: 4721 Klamath Street  
 Los Angeles, California

Sheet 1 of 22  
 Date Sampled: August 19, 2011

Industrial Hygienist and California Certified  
 Asbestos Consultant and No: Ron Miller, Cert. # 92-0470  
 Job No.: 29405516.10000

Floor	Sample Number	Material Sampled	Sample Location	Material			Photo	Quantity	Results
				Friable	Condition	Accessibility			
Ext.	A-1	Rolled Roofing Material	Locker Room Roof	Yes <input type="checkbox"/> No <input checked="" type="checkbox"/>	Good <input type="checkbox"/> Fair <input type="checkbox"/> Poor <input checked="" type="checkbox"/>	High <input type="checkbox"/> Med <input type="checkbox"/> Low <input checked="" type="checkbox"/>	Yes <input type="checkbox"/> No <input checked="" type="checkbox"/>		No Asbestos Detected
Ext.	A-2	Roofing Felt Material	Locker Room Roof	Yes <input type="checkbox"/> No <input checked="" type="checkbox"/>	Good <input type="checkbox"/> Fair <input type="checkbox"/> Poor <input checked="" type="checkbox"/>	High <input type="checkbox"/> Med <input type="checkbox"/> Low <input checked="" type="checkbox"/>	Yes <input type="checkbox"/> No <input checked="" type="checkbox"/>		No Asbestos Detected
Ext.	A-3	Roofing Mastic Material	Locker Room Roof	Yes <input type="checkbox"/> No <input checked="" type="checkbox"/>	Good <input type="checkbox"/> Fair <input type="checkbox"/> Poor <input checked="" type="checkbox"/>	High <input type="checkbox"/> Med <input type="checkbox"/> Low <input checked="" type="checkbox"/>	Yes <input type="checkbox"/> No <input checked="" type="checkbox"/>		4% Chrysotile

## TABLE 3 ASBESTOS BULK SAMPLING DATA SHEETS

Project: El Sereno Community Building  
 Address: 4721 Klamath Street  
 Los Angeles, California

Sheet 2 of 22  
 Date: August 19, 2011

Industrial Hygienist and California Certified  
 Asbestos Consultant and No: Ron Miller, Cert. # 92-0470  
 Job No.: 29405516.10000

Floor	Sample Number	Material Sampled	Sample Location	Material			Photo	Quantity	Results
				Friable	Condition	Accessibility			
Ext.	A-4	Rolled Roofing Material	Auditorium Roof	Yes <input type="checkbox"/> No <input checked="" type="checkbox"/>	Good <input type="checkbox"/> Fair <input type="checkbox"/> Poor <input checked="" type="checkbox"/>	High <input type="checkbox"/> Med <input type="checkbox"/> Low <input checked="" type="checkbox"/>	Yes <input type="checkbox"/> No <input checked="" type="checkbox"/>		No Asbestos Detected
Ext.	A-5	Roofing Felt Material	Auditorium Roof	Yes <input type="checkbox"/> No <input checked="" type="checkbox"/>	Good <input type="checkbox"/> Fair <input type="checkbox"/> Poor <input checked="" type="checkbox"/>	High <input type="checkbox"/> Med <input type="checkbox"/> Low <input checked="" type="checkbox"/>	Yes <input type="checkbox"/> No <input checked="" type="checkbox"/>		No Asbestos Detected
Ext.	A-6	Roofing Mastic Material	Auditorium Roof	Yes <input type="checkbox"/> No <input checked="" type="checkbox"/>	Good <input type="checkbox"/> Fair <input type="checkbox"/> Poor <input checked="" type="checkbox"/>	High <input type="checkbox"/> Med <input type="checkbox"/> Low <input checked="" type="checkbox"/>	Yes <input type="checkbox"/> No <input checked="" type="checkbox"/>		No Asbestos Detected
N/A	A-7	Rolled Roofing Material	Storage Room Roof	Yes <input type="checkbox"/> No <input checked="" type="checkbox"/>	Good <input type="checkbox"/> Fair <input type="checkbox"/> Poor <input checked="" type="checkbox"/>	High <input type="checkbox"/> Med <input type="checkbox"/> Low <input checked="" type="checkbox"/>	Yes <input type="checkbox"/> No <input checked="" type="checkbox"/>		No Asbestos Detected

## TABLE 3 ASBESTOS BULK SAMPLING DATA SHEETS

Project: El Sereno Community Building  
 Address: 4721 Klamath Street  
 Los Angeles, California

Sheet 3 of 22  
 Date: August 19, 2011

Industrial Hygienist and California Certified  
 Asbestos Consultant and No: Ron Miller, Cert. # 92-0470  
 Job No.: 29405516.10000

Floor	Sample Number	Material Sampled	Sample Location	Material			Photo	Quantity	Results
				Friable	Condition	Accessibility			
Ext.	A-8	Roofing Felt Material	Storage Room Roof	Yes <input type="checkbox"/> No <input checked="" type="checkbox"/>	Good <input type="checkbox"/> Fair <input type="checkbox"/> Poor <input checked="" type="checkbox"/>	High <input type="checkbox"/> Med <input type="checkbox"/> Low <input checked="" type="checkbox"/>	Yes <input type="checkbox"/> No <input checked="" type="checkbox"/>		No Asbestos Detected
Ext.	A-9	Roofing Mastic Material	Storage Room Roof	Yes <input type="checkbox"/> No <input checked="" type="checkbox"/>	Good <input type="checkbox"/> Fair <input type="checkbox"/> Poor <input checked="" type="checkbox"/>	High <input type="checkbox"/> Med <input type="checkbox"/> Low <input checked="" type="checkbox"/>	Yes <input type="checkbox"/> No <input checked="" type="checkbox"/>		5% Chrysotile
Ext.	A-10	Transite Vent Pipe (4-inch)	Roof	Yes <input type="checkbox"/> No <input checked="" type="checkbox"/>	Good <input checked="" type="checkbox"/> Fair <input type="checkbox"/> Poor <input type="checkbox"/>	High <input type="checkbox"/> Med <input type="checkbox"/> Low <input checked="" type="checkbox"/>	Yes <input type="checkbox"/> No <input checked="" type="checkbox"/>		20% Chrysotile
N/A	A-11	Ceiling Insulation Material	Roof	Yes <input checked="" type="checkbox"/> No <input type="checkbox"/>	Good <input type="checkbox"/> Fair <input type="checkbox"/> Poor <input checked="" type="checkbox"/>	High <input type="checkbox"/> Med <input type="checkbox"/> Low <input checked="" type="checkbox"/>	Yes <input type="checkbox"/> No <input checked="" type="checkbox"/>		No Asbestos Detected

## TABLE 3 ASBESTOS BULK SAMPLING DATA SHEETS

Project: El Sereno Community Building  
 Address: 4721 Klamath Street  
 Los Angeles, California

Sheet 4 of 22  
 Date: August 19, 2011

Industrial Hygienist and California Certified  
 Asbestos Consultant and No: Ron Miller, Cert. # 92-0470  
 Job No.: 29405516.10000

Floor	Sample Number	Material Sampled	Sample Location	Material			Photo	Quantity	Results
				Friable	Condition	Accessibility			
Ext.	A-12	Transite Siding Material	Exterior Wall the Auditorium	Yes <input type="checkbox"/> No <input checked="" type="checkbox"/>	Good <input checked="" type="checkbox"/> Fair <input type="checkbox"/> Poor <input type="checkbox"/>	High <input type="checkbox"/> Med <input type="checkbox"/> Low <input checked="" type="checkbox"/>	Yes <input type="checkbox"/> No <input checked="" type="checkbox"/>		20% Chrysotile
Ext.	A-13	Exterior Stucco Material	Exterior Wall the Auditorium	Yes <input type="checkbox"/> No <input checked="" type="checkbox"/>	Good <input checked="" type="checkbox"/> Fair <input type="checkbox"/> Poor <input type="checkbox"/>	High <input checked="" type="checkbox"/> Med <input type="checkbox"/> Low <input type="checkbox"/>	Yes <input type="checkbox"/> No <input checked="" type="checkbox"/>		Trace <1% Chrysotile
Ext.	A-14	Exterior Stucco Barrier Paper	Exterior Wall the Auditorium	Yes <input type="checkbox"/> No <input checked="" type="checkbox"/>	Good <input checked="" type="checkbox"/> Fair <input type="checkbox"/> Poor <input type="checkbox"/>	High <input type="checkbox"/> Med <input type="checkbox"/> Low <input checked="" type="checkbox"/>	Yes <input type="checkbox"/> No <input checked="" type="checkbox"/>		No Asbestos Detected
Ext.	A-15	Transite Panel	Exterior Wall the Auditorium	Yes <input type="checkbox"/> No <input checked="" type="checkbox"/>	Good <input checked="" type="checkbox"/> Fair <input type="checkbox"/> Poor <input type="checkbox"/>	High <input type="checkbox"/> Med <input type="checkbox"/> Low <input checked="" type="checkbox"/>	Yes <input type="checkbox"/> No <input checked="" type="checkbox"/>		20% Chrysotile

## TABLE 3 ASBESTOS BULK SAMPLING DATA SHEETS

Project: El Sereno Community Building  
 Address: 4721 Klamath Street  
 Los Angeles, California

Sheet 5 of 22  
 Date: August 19, 2011

Industrial Hygienist and California Certified  
 Asbestos Consultant and No: Ron Miller, Cert. # 92-0470  
 Job No.: 29405516.10000

Floor	Sample Number	Material Sampled	Sample Location	Material			Photo	Quantity	Results
				Friable	Condition	Accessibility			
Ext.	A-16	Exterior Stucco Material	Roof	Yes <input type="checkbox"/> No <input checked="" type="checkbox"/>	Good <input checked="" type="checkbox"/> Fair <input type="checkbox"/> Poor <input type="checkbox"/>	High <input checked="" type="checkbox"/> Med <input type="checkbox"/> Low <input type="checkbox"/>	Yes <input type="checkbox"/> No <input checked="" type="checkbox"/>		No Asbestos Detected
Ext.	A-17	Exterior Stucco Barrier Paper	Roof	Yes <input type="checkbox"/> No <input checked="" type="checkbox"/>	Good <input checked="" type="checkbox"/> Fair <input type="checkbox"/> Poor <input type="checkbox"/>	High <input type="checkbox"/> Med <input type="checkbox"/> Low <input checked="" type="checkbox"/>	Yes <input type="checkbox"/> No <input checked="" type="checkbox"/>		No Asbestos Detected
Ext.	A-18	Rolled Roofing Material	Office Structure Roof	Yes <input type="checkbox"/> No <input checked="" type="checkbox"/>	Good <input type="checkbox"/> Fair <input type="checkbox"/> Poor <input checked="" type="checkbox"/>	High <input type="checkbox"/> Med <input type="checkbox"/> Low <input checked="" type="checkbox"/>	Yes <input type="checkbox"/> No <input checked="" type="checkbox"/>		No Asbestos Detected
Ext.	A-19	Roofing Felt Paper	Office Structure Roof	Yes <input type="checkbox"/> No <input checked="" type="checkbox"/>	Good <input type="checkbox"/> Fair <input type="checkbox"/> Poor <input checked="" type="checkbox"/>	High <input type="checkbox"/> Med <input type="checkbox"/> Low <input checked="" type="checkbox"/>	Yes <input type="checkbox"/> No <input checked="" type="checkbox"/>		No Asbestos Detected

## TABLE 3 ASBESTOS BULK SAMPLING DATA SHEETS

Project: El Sereno Community Building  
 Address: 4721 Klamath Street  
 Los Angeles, California

Sheet 6 of 22  
 Date: August 19, 2011

Industrial Hygienist and California Certified  
 Asbestos Consultant and No: Ron Miller, Cert. # 92-0470  
 Job No.: 29405516.10000

Floor	Sample Number	Material Sampled	Sample Location	Material			Photo	Quantity	Results
				Friable	Condition	Accessibility			
Ext.	A-20	Roofing Mastic Material	Office Structure Roof	Yes <input type="checkbox"/> No <input checked="" type="checkbox"/>	Good <input type="checkbox"/> Fair <input type="checkbox"/> Poor <input checked="" type="checkbox"/>	High <input type="checkbox"/> Med <input type="checkbox"/> Low <input checked="" type="checkbox"/>	Yes <input type="checkbox"/> No <input checked="" type="checkbox"/>		No Asbestos Detected
Int.	A-21	9-inch by 9-inch Salmon Vinyl Floor Tiles and Mastic	Office Structure Floor	Yes <input type="checkbox"/> No <input checked="" type="checkbox"/>	Good <input type="checkbox"/> Fair <input checked="" type="checkbox"/> Poor <input type="checkbox"/>	High <input checked="" type="checkbox"/> Med <input type="checkbox"/> Low <input type="checkbox"/>	Yes <input type="checkbox"/> No <input checked="" type="checkbox"/>		Tile = 3% Chrysotile Mastic = 3% Chrysotile
Int.	A-22	9-inch by 9-inch Salmon Vinyl Floor Tiles and Mastic	Office Structure Floor	Yes <input type="checkbox"/> No <input checked="" type="checkbox"/>	Good <input type="checkbox"/> Fair <input checked="" type="checkbox"/> Poor <input type="checkbox"/>	High <input checked="" type="checkbox"/> Med <input type="checkbox"/> Low <input type="checkbox"/>	Yes <input type="checkbox"/> No <input checked="" type="checkbox"/>		Tile = 3% Chrysotile Mastic = 3% Chrysotile
Int.	A-23	9-inch by 9-inch Salmon Vinyl Floor Tiles and Mastic	Office Structure Floor	Yes <input type="checkbox"/> No <input checked="" type="checkbox"/>	Good <input type="checkbox"/> Fair <input checked="" type="checkbox"/> Poor <input type="checkbox"/>	High <input checked="" type="checkbox"/> Med <input type="checkbox"/> Low <input type="checkbox"/>	Yes <input type="checkbox"/> No <input checked="" type="checkbox"/>		Tile = 3% Chrysotile Mastic = 3% Chrysotile



## TABLE 3 ASBESTOS BULK SAMPLING DATA SHEETS

Project: El Sereno Community Building  
 Address: 4721 Klamath Street  
 Los Angeles, California

Sheet 7 of 22  
 Date: August 19, 2011

Industrial Hygienist and California Certified  
 Asbestos Consultant and No: Ron Miller, Cert. # 92-0470  
 Job No.: 29405516.10000

Floor	Sample Number	Material Sampled	Sample Location	Material			Photo	Quantity	Results
				Friable	Condition	Accessibility			
Int.	A-24	Wall Plaster with Skim Coat Material	Office Structure Wall	Yes <input type="checkbox"/> No <input checked="" type="checkbox"/>	Good <input type="checkbox"/> Fair <input checked="" type="checkbox"/> Poor <input type="checkbox"/>	High <input checked="" type="checkbox"/> Med <input type="checkbox"/> Low <input type="checkbox"/>	Yes <input type="checkbox"/> No <input checked="" type="checkbox"/>		No Asbestos Detected
Int.	A-25	Wall Plaster with Skim Coat Material	Office Structure Wall	Yes <input type="checkbox"/> No <input checked="" type="checkbox"/>	Good <input type="checkbox"/> Fair <input checked="" type="checkbox"/> Poor <input type="checkbox"/>	High <input checked="" type="checkbox"/> Med <input type="checkbox"/> Low <input type="checkbox"/>	Yes <input type="checkbox"/> No <input checked="" type="checkbox"/>		No Asbestos Detected
Int.	A-26	Drywall Material	Office Structure Wall	Yes <input type="checkbox"/> No <input checked="" type="checkbox"/>	Good <input type="checkbox"/> Fair <input checked="" type="checkbox"/> Poor <input type="checkbox"/>	High <input checked="" type="checkbox"/> Med <input type="checkbox"/> Low <input type="checkbox"/>	Yes <input type="checkbox"/> No <input checked="" type="checkbox"/>		No Asbestos Detected
Int.	A-27	Drywall Material	Office Structure Wall	Yes <input type="checkbox"/> No <input checked="" type="checkbox"/>	Good <input type="checkbox"/> Fair <input checked="" type="checkbox"/> Poor <input type="checkbox"/>	High <input checked="" type="checkbox"/> Med <input type="checkbox"/> Low <input type="checkbox"/>	Yes <input type="checkbox"/> No <input checked="" type="checkbox"/>		No Asbestos Detected

## TABLE 3 ASBESTOS BULK SAMPLING DATA SHEETS

Project: El Sereno Community Building  
 Address: 4721 Klamath Street  
 Los Angeles, California

Sheet 8 of 22  
 Date: August 19, 2011

Industrial Hygienist and California Certified  
 Asbestos Consultant and No: Ron Miller, Cert. # 92-0470  
 Job No.: 29405516.10000

Floor	Sample Number	Material Sampled	Sample Location	Material			Photo	Quantity	Results
				Friable	Condition	Accessibility			
Int.	A-28	Cove Base with Mastic	Office StructureWall	Yes <input type="checkbox"/> No <input checked="" type="checkbox"/>	Good <input type="checkbox"/> Fair <input checked="" type="checkbox"/> Poor <input type="checkbox"/>	High <input checked="" type="checkbox"/> Med <input type="checkbox"/> Low <input type="checkbox"/>	Yes <input type="checkbox"/> No <input checked="" type="checkbox"/>		Cove = No Asbestos Detected Mastic = Trace <1% Tremolite
Ext.	A-29	Transite Panel 1/2-inch Material	Exterior Wall of the Office Structure	Yes <input type="checkbox"/> No <input checked="" type="checkbox"/>	Good <input checked="" type="checkbox"/> Fair <input type="checkbox"/> Poor <input type="checkbox"/>	High <input checked="" type="checkbox"/> Med <input type="checkbox"/> Low <input type="checkbox"/>	Yes <input type="checkbox"/> No <input checked="" type="checkbox"/>		20% Chrysotile
Ext.	A-30	Transite Panel 1/8-inch Material	Exterior Wall of the Office Structure	Yes <input type="checkbox"/> No <input checked="" type="checkbox"/>	Good <input checked="" type="checkbox"/> Fair <input type="checkbox"/> Poor <input type="checkbox"/>	High <input checked="" type="checkbox"/> Med <input type="checkbox"/> Low <input type="checkbox"/>	Yes <input type="checkbox"/> No <input checked="" type="checkbox"/>		20% Chrysotile
Ext.	A-31	Exterior Stucco Material	Exterior Wall of the Building	Yes <input type="checkbox"/> No <input checked="" type="checkbox"/>	Good <input checked="" type="checkbox"/> Fair <input type="checkbox"/> Poor <input type="checkbox"/>	High <input checked="" type="checkbox"/> Med <input type="checkbox"/> Low <input type="checkbox"/>	Yes <input type="checkbox"/> No <input checked="" type="checkbox"/>		No Asbestos Detected

## TABLE 3 ASBESTOS BULK SAMPLING DATA SHEETS

Project: El Sereno Community Building  
 Address: 4721 Klamath Street  
 Los Angeles, California

Sheet 9 of 22  
 Date: August 19, 2011

Industrial Hygienist and California Certified  
 Asbestos Consultant and No: Ron Miller, Cert. # 92-0470  
 Job No.: 29405516.10000

Floor	Sample Number	Material Sampled	Sample Location	Material			Photo	Quantity	Results
				Friable	Condition	Accessibility			
Ext.	A-32	Exterior Stucco Material	Exterior Wall of the Building	Yes <input type="checkbox"/> No <input checked="" type="checkbox"/>	Good <input checked="" type="checkbox"/> Fair <input type="checkbox"/> Poor <input type="checkbox"/>	High <input checked="" type="checkbox"/> Med <input type="checkbox"/> Low <input type="checkbox"/>	Yes <input type="checkbox"/> No <input checked="" type="checkbox"/>		No Asbestos Detected
Ext.	A-33	Exterior Stucco Material	Exterior Wall of the Building	Yes <input type="checkbox"/> No <input checked="" type="checkbox"/>	Good <input checked="" type="checkbox"/> Fair <input type="checkbox"/> Poor <input type="checkbox"/>	High <input checked="" type="checkbox"/> Med <input type="checkbox"/> Low <input type="checkbox"/>	Yes <input type="checkbox"/> No <input checked="" type="checkbox"/>		No Asbestos Detected
Ext.	A-34	Exterior Stucco Material	Exterior Wall of the Building	Yes <input type="checkbox"/> No <input checked="" type="checkbox"/>	Good <input checked="" type="checkbox"/> Fair <input type="checkbox"/> Poor <input type="checkbox"/>	High <input checked="" type="checkbox"/> Med <input type="checkbox"/> Low <input type="checkbox"/>	Yes <input type="checkbox"/> No <input checked="" type="checkbox"/>		No Asbestos Detected
N/A	A-35	Exterior Stucco Material	Exterior Wall of the Building	Yes <input type="checkbox"/> No <input checked="" type="checkbox"/>	Good <input checked="" type="checkbox"/> Fair <input type="checkbox"/> Poor <input type="checkbox"/>	High <input checked="" type="checkbox"/> Med <input type="checkbox"/> Low <input type="checkbox"/>	Yes <input type="checkbox"/> No <input checked="" type="checkbox"/>		No Asbestos Detected

## TABLE 3 ASBESTOS BULK SAMPLING DATA SHEETS

Project: El Sereno Community Building  
 Address: 4721 Klamath Street  
 Los Angeles, California

Sheet 10 of 22  
 Date: August 19, 2011

Industrial Hygienist and California Certified  
 Asbestos Consultant and No: Ron Miller, Cert. # 92-0470  
 Job No.: 29405516.10000

Floor	Sample Number	Material Sampled	Sample Location	Material			Photo	Quantity	Results
				Friable	Condition	Accessibility			
Ext.	A-36	Exterior Stucco Material	Exterior Wall of the Building	Yes <input type="checkbox"/> No <input checked="" type="checkbox"/>	Good <input checked="" type="checkbox"/> Fair <input type="checkbox"/> Poor <input type="checkbox"/>	High <input checked="" type="checkbox"/> Med <input type="checkbox"/> Low <input type="checkbox"/>	Yes <input type="checkbox"/> No <input checked="" type="checkbox"/>		No Asbestos Detected
Ext.	A-37	Exterior Stucco Material	Exterior Wall of the Building	Yes <input type="checkbox"/> No <input checked="" type="checkbox"/>	Good <input checked="" type="checkbox"/> Fair <input type="checkbox"/> Poor <input type="checkbox"/>	High <input checked="" type="checkbox"/> Med <input type="checkbox"/> Low <input type="checkbox"/>	Yes <input type="checkbox"/> No <input checked="" type="checkbox"/>		No Asbestos Detected
Ext.	A-38	Window Putty material	Exterior Wall of the Building	Yes <input type="checkbox"/> No <input checked="" type="checkbox"/>	Good <input checked="" type="checkbox"/> Fair <input type="checkbox"/> Poor <input type="checkbox"/>	High <input checked="" type="checkbox"/> Med <input type="checkbox"/> Low <input type="checkbox"/>	Yes <input type="checkbox"/> No <input checked="" type="checkbox"/>		No Asbestos Detected
N/A	A-39	Window Putty material	Exterior Wall of the Building	Yes <input type="checkbox"/> No <input checked="" type="checkbox"/>	Good <input checked="" type="checkbox"/> Fair <input type="checkbox"/> Poor <input type="checkbox"/>	High <input checked="" type="checkbox"/> Med <input type="checkbox"/> Low <input type="checkbox"/>	Yes <input type="checkbox"/> No <input checked="" type="checkbox"/>		No Asbestos Detected

## TABLE 3 ASBESTOS BULK SAMPLING DATA SHEETS

Project: El Sereno Community Building  
 Address: 4721 Klamath Street  
 Los Angeles, California

Sheet 11 of 22  
 Date: August 19, 2011

Industrial Hygienist and California Certified  
 Asbestos Consultant and No: Ron Miller, Cert. # 92-0470  
 Job No.: 29405516.10000

Floor	Sample Number	Material Sampled	Sample Location	Material			Photo	Quantity	Results
				Friable	Condition	Accessibility			
Ext.	A-40	Window Putty Material	Exterior Wall of the Building	Yes <input type="checkbox"/> No <input checked="" type="checkbox"/>	Good <input type="checkbox"/> Fair <input type="checkbox"/> Poor <input checked="" type="checkbox"/>	High <input type="checkbox"/> Med <input type="checkbox"/> Low <input checked="" type="checkbox"/>	Yes <input type="checkbox"/> No <input checked="" type="checkbox"/>		No Asbestos Detected
Ext.	A-41	White 12-inch by 12-inch Ceiling Tiles (holes)	Ceiling of the Building	Yes <input checked="" type="checkbox"/> No <input type="checkbox"/>	Good <input type="checkbox"/> Fair <input type="checkbox"/> Poor <input checked="" type="checkbox"/>	High <input type="checkbox"/> Med <input type="checkbox"/> Low <input checked="" type="checkbox"/>	Yes <input type="checkbox"/> No <input checked="" type="checkbox"/>		No Asbestos Detected
Ext.	A-42	White 12-inch by 12-inch Ceiling Tiles (holes)	Ceiling of the Building	Yes <input checked="" type="checkbox"/> No <input type="checkbox"/>	Good <input type="checkbox"/> Fair <input type="checkbox"/> Poor <input checked="" type="checkbox"/>	High <input checked="" type="checkbox"/> Med <input type="checkbox"/> Low <input type="checkbox"/>	Yes <input type="checkbox"/> No <input checked="" type="checkbox"/>		No Asbestos Detected
N/A	A-43	White 12-inch by 12-inch Ceiling Tiles (holes)	Ceiling of the Building	Yes <input checked="" type="checkbox"/> No <input type="checkbox"/>	Good <input type="checkbox"/> Fair <input type="checkbox"/> Poor <input checked="" type="checkbox"/>	High <input type="checkbox"/> Med <input type="checkbox"/> Low <input checked="" type="checkbox"/>	Yes <input type="checkbox"/> No <input checked="" type="checkbox"/>		No Asbestos Detected

## TABLE 3 ASBESTOS BULK SAMPLING DATA SHEETS

Project: El Sereno Community Building  
 Address: 4721 Klamath Street  
 Los Angeles, California

Sheet 12 of 22  
 Date: August 19, 2011

Industrial Hygienist and California Certified  
 Asbestos Consultant and No: Ron Miller, Cert. # 92-0470  
 Job No.: 29405516.10000

Floor	Sample Number	Material Sampled	Sample Location	Material			Photo	Quantity	Results
				Friable	Condition	Accessibility			
Ext.	A-44	White 12-inch by 12-inch Ceiling Tiles (Slots)	Ceiling of the Building	Yes <input type="checkbox"/> No <input checked="" type="checkbox"/>	Good <input type="checkbox"/> Fair <input type="checkbox"/> Poor <input checked="" type="checkbox"/>	High <input checked="" type="checkbox"/> Med <input type="checkbox"/> Low <input type="checkbox"/>	Yes <input type="checkbox"/> No <input checked="" type="checkbox"/>		No Asbestos Detected
Ext.	A-45	White 12-inch by 12-inch Ceiling Tiles (Slots)	Ceiling of the Building	Yes <input type="checkbox"/> No <input checked="" type="checkbox"/>	Good <input type="checkbox"/> Fair <input type="checkbox"/> Poor <input checked="" type="checkbox"/>	High <input checked="" type="checkbox"/> Med <input type="checkbox"/> Low <input type="checkbox"/>	Yes <input type="checkbox"/> No <input checked="" type="checkbox"/>		No Asbestos Detected
Ext.	A-46	White 12-inch by 12-inch Ceiling Tiles (Slots)	Ceiling of the Building	Yes <input type="checkbox"/> No <input checked="" type="checkbox"/>	Good <input type="checkbox"/> Fair <input type="checkbox"/> Poor <input checked="" type="checkbox"/>	High <input checked="" type="checkbox"/> Med <input type="checkbox"/> Low <input type="checkbox"/>	Yes <input type="checkbox"/> No <input checked="" type="checkbox"/>		No Asbestos Detected
N/A	A-47	White 12-inch by 12-inch Ceiling Tiles (Solid)	Ceiling of the Building	Yes <input checked="" type="checkbox"/> No <input type="checkbox"/>	Good <input type="checkbox"/> Fair <input type="checkbox"/> Poor <input checked="" type="checkbox"/>	High <input checked="" type="checkbox"/> Med <input type="checkbox"/> Low <input type="checkbox"/>	Yes <input type="checkbox"/> No <input checked="" type="checkbox"/>		No Asbestos Detected

## TABLE 3 ASBESTOS BULK SAMPLING DATA SHEETS

Project: El Sereno Community Building  
Address: 4721 Klamath Street  
Los Angeles, California

Sheet 13 of 22  
Date: August 19, 2011

Industrial Hygienist and California Certified  
Asbestos Consultant and No: Ron Miller, Cert. # 92-0470  
Job No.: 29405516.10000

Floor	Sample Number	Material Sampled	Sample Location	Material			Photo	Quantity	Results
				Friable	Condition	Accessibility			
Ext.	A-48	White 12-inch by 12-inch Ceiling Tiles (solid)	Ceiling of the Building	Yes <input checked="" type="checkbox"/> No <input type="checkbox"/>	Good <input type="checkbox"/> Fair <input type="checkbox"/> Poor <input checked="" type="checkbox"/>	High <input checked="" type="checkbox"/> Med <input type="checkbox"/> Low <input type="checkbox"/>	Yes <input type="checkbox"/> No <input checked="" type="checkbox"/>		No Asbestos Detected
Ext.	A-49	White 12-inch by 12-inch Ceiling Tiles (solid)	Ceiling of the Building	Yes <input checked="" type="checkbox"/> No <input type="checkbox"/>	Good <input type="checkbox"/> Fair <input type="checkbox"/> Poor <input checked="" type="checkbox"/>	High <input checked="" type="checkbox"/> Med <input type="checkbox"/> Low <input type="checkbox"/>	Yes <input type="checkbox"/> No <input checked="" type="checkbox"/>		No Asbestos Detected
Ext.	A-50	Stage Curtin Material (high)	Stage Area	Yes <input checked="" type="checkbox"/> No <input type="checkbox"/>	Good <input type="checkbox"/> Fair <input type="checkbox"/> Poor <input checked="" type="checkbox"/>	High <input checked="" type="checkbox"/> Med <input type="checkbox"/> Low <input type="checkbox"/>	Yes <input type="checkbox"/> No <input checked="" type="checkbox"/>		No Asbestos Detected
N/A	A-51	Side Window Curtain (high)	Interior Wall	Yes <input checked="" type="checkbox"/> No <input type="checkbox"/>	Good <input type="checkbox"/> Fair <input type="checkbox"/> Poor <input checked="" type="checkbox"/>	High <input checked="" type="checkbox"/> Med <input type="checkbox"/> Low <input type="checkbox"/>	Yes <input type="checkbox"/> No <input checked="" type="checkbox"/>		No Asbestos Detected

## TABLE 3 ASBESTOS BULK SAMPLING DATA SHEETS

Project: El Sereno Community Building  
 Address: 4721 Klamath Street  
 Los Angeles, California

Sheet 14 of 22  
 Date: August 19, 2011

Industrial Hygienist and California Certified  
 Asbestos Consultant and No: Ron Miller, Cert. # 92-0470  
 Job No.: 29405516.10000

Floor	Sample Number	Material Sampled	Sample Location	Material			Photo	Quantity	Results
				Friable	Condition	Accessibility			
Ext.	A-52	Tan 12-inch by 12-inch Vinyl Floor Tiles and Mastic	Inside	Yes <input type="checkbox"/> No <input checked="" type="checkbox"/>	Good <input type="checkbox"/> Fair <input type="checkbox"/> Poor <input checked="" type="checkbox"/>	High <input checked="" type="checkbox"/> Med <input type="checkbox"/> Low <input type="checkbox"/>	Yes <input type="checkbox"/> No <input checked="" type="checkbox"/>		No Asbestos Detected
Ext.	A-53	Tan 12-inch by 12-inch Vinyl Floor Tiles and Mastic	Inside	Yes <input type="checkbox"/> No <input checked="" type="checkbox"/>	Good <input type="checkbox"/> Fair <input type="checkbox"/> Poor <input checked="" type="checkbox"/>	High <input checked="" type="checkbox"/> Med <input type="checkbox"/> Low <input type="checkbox"/>	Yes <input type="checkbox"/> No <input checked="" type="checkbox"/>		No Asbestos Detected
Ext.	A-54	Tan 12-inch by 12-inch Vinyl Floor Tiles and Mastic	Inside	Yes <input type="checkbox"/> No <input checked="" type="checkbox"/>	Good <input type="checkbox"/> Fair <input type="checkbox"/> Poor <input checked="" type="checkbox"/>	High <input checked="" type="checkbox"/> Med <input type="checkbox"/> Low <input type="checkbox"/>	Yes <input type="checkbox"/> No <input checked="" type="checkbox"/>		No Asbestos Detected
N/A	A-55	Window Putty Material	Exterior Window	Yes <input type="checkbox"/> No <input checked="" type="checkbox"/>	Good <input checked="" type="checkbox"/> Fair <input type="checkbox"/> Poor <input type="checkbox"/>	High <input checked="" type="checkbox"/> Med <input type="checkbox"/> Low <input type="checkbox"/>	Yes <input type="checkbox"/> No <input checked="" type="checkbox"/>		No Asbestos Detected



## TABLE 3 ASBESTOS BULK SAMPLING DATA SHEETS

Project: El Sereno Community Building  
 Address: 4721 Klamath Street  
 Los Angeles, California

Sheet 15 of 22  
 Date: August 19, 2011

Industrial Hygienist and California Certified  
 Asbestos Consultant and No: Ron Miller, Cert. # 92-0470  
 Job No.: 29405516.10000

Floor	Sample Number	Material Sampled	Sample Location	Material			Photo	Quantity	Results
				Friable	Condition	Accessibility			
Ext.	A-56	Wall Plaster and Skim Coat Material	Interior Wall	Yes <input type="checkbox"/> No <input checked="" type="checkbox"/>	Good <input checked="" type="checkbox"/> Fair <input type="checkbox"/> Poor <input type="checkbox"/>	High <input checked="" type="checkbox"/> Med <input type="checkbox"/> Low <input type="checkbox"/>	Yes <input type="checkbox"/> No <input checked="" type="checkbox"/>		No Asbestos Detected
Ext.	A-57	Wall Plaster and Skim Coat Material	Interior Wall	Yes <input type="checkbox"/> No <input checked="" type="checkbox"/>	Good <input checked="" type="checkbox"/> Fair <input type="checkbox"/> Poor <input type="checkbox"/>	High <input checked="" type="checkbox"/> Med <input type="checkbox"/> Low <input type="checkbox"/>	Yes <input type="checkbox"/> No <input checked="" type="checkbox"/>		No Asbestos Detected
Ext.	A-58	Wall Plaster and Skim Coat Material	Interior Wall	Yes <input type="checkbox"/> No <input checked="" type="checkbox"/>	Good <input checked="" type="checkbox"/> Fair <input type="checkbox"/> Poor <input type="checkbox"/>	High <input checked="" type="checkbox"/> Med <input type="checkbox"/> Low <input type="checkbox"/>	Yes <input type="checkbox"/> No <input checked="" type="checkbox"/>		No Asbestos Detected
N/A	A-59	Wall Plaster and Skim Coat Material	Interior Wall	Yes <input type="checkbox"/> No <input checked="" type="checkbox"/>	Good <input checked="" type="checkbox"/> Fair <input type="checkbox"/> Poor <input type="checkbox"/>	High <input checked="" type="checkbox"/> Med <input type="checkbox"/> Low <input type="checkbox"/>	Yes <input type="checkbox"/> No <input checked="" type="checkbox"/>		No Asbestos Detected

## TABLE 3 ASBESTOS BULK SAMPLING DATA SHEETS

Project: El Sereno Community Building  
 Address: 4721 Klamath Street  
 Los Angeles, California

Sheet 16 of 22  
 Date: August 19, 2011

Industrial Hygienist and California Certified  
 Asbestos Consultant and No: Ron Miller, Cert. # 92-0470  
 Job No.: 29405516.10000

Floor	Sample Number	Material Sampled	Sample Location	Material			Photo	Quantity	Results
				Friable	Condition	Accessibility			
Ext.	A-60	Wall Plaster and Skim Coat Material	Interior Wall	Yes <input type="checkbox"/> No <input checked="" type="checkbox"/>	Good <input type="checkbox"/> Fair <input type="checkbox"/> Poor <input checked="" type="checkbox"/>	High <input checked="" type="checkbox"/> Med <input type="checkbox"/> Low <input type="checkbox"/>	Yes <input type="checkbox"/> No <input checked="" type="checkbox"/>		No Asbestos Detected
Ext.	A-61	Brown Cove Base Material	Interior Wall	Yes <input type="checkbox"/> No <input checked="" type="checkbox"/>	Good <input type="checkbox"/> Fair <input type="checkbox"/> Poor <input checked="" type="checkbox"/>	High <input checked="" type="checkbox"/> Med <input type="checkbox"/> Low <input type="checkbox"/>	Yes <input type="checkbox"/> No <input checked="" type="checkbox"/>		No Asbestos Detected
Ext.	A-62	Brown Cove Base Material	Interior Wall	Yes <input type="checkbox"/> No <input checked="" type="checkbox"/>	Good <input type="checkbox"/> Fair <input type="checkbox"/> Poor <input checked="" type="checkbox"/>	High <input checked="" type="checkbox"/> Med <input type="checkbox"/> Low <input type="checkbox"/>	Yes <input type="checkbox"/> No <input checked="" type="checkbox"/>		No Asbestos Detected
N/A	A-63	Brown Cove Base Material	Interior Wall	Yes <input type="checkbox"/> No <input checked="" type="checkbox"/>	Good <input type="checkbox"/> Fair <input type="checkbox"/> Poor <input checked="" type="checkbox"/>	High <input checked="" type="checkbox"/> Med <input type="checkbox"/> Low <input type="checkbox"/>	Yes <input type="checkbox"/> No <input checked="" type="checkbox"/>		No Asbestos Detected

## TABLE 3 ASBESTOS BULK SAMPLING DATA SHEETS

Project: El Sereno Community Building  
 Address: 4721 Klamath Street  
 Los Angeles, California

Sheet 17 of 22  
 Date: August 19, 2011

Industrial Hygienist and California Certified  
 Asbestos Consultant and No: Ron Miller, Cert. # 92-0470  
 Job No.: 29405516.10000

Floor	Sample Number	Material Sampled	Sample Location	Material			Photo	Quantity	Results
				Friable	Condition	Accessibility			
Ext.	A-64	9-inch by 9-inch Green Vinyl Floor Tiles and Mastic	Kitchen Floor	Yes <input type="checkbox"/> No <input checked="" type="checkbox"/>	Good <input type="checkbox"/> Fair <input checked="" type="checkbox"/> Poor <input type="checkbox"/>	High <input checked="" type="checkbox"/> Med <input type="checkbox"/> Low <input type="checkbox"/>	Yes <input type="checkbox"/> No <input checked="" type="checkbox"/>		Tile = 3% Chrysotile Mastic = Trace <1% Chrysotile
Ext.	A-65	9-inch by 9-inch Green Vinyl Floor Tiles and Mastic	Kitchen Floor	Yes <input type="checkbox"/> No <input checked="" type="checkbox"/>	Good <input type="checkbox"/> Fair <input checked="" type="checkbox"/> Poor <input type="checkbox"/>	High <input checked="" type="checkbox"/> Med <input type="checkbox"/> Low <input type="checkbox"/>	Yes <input type="checkbox"/> No <input checked="" type="checkbox"/>		Tile = 3% Chrysotile Mastic = Trace <1% Chrysotile
Ext.	A-66	9-inch by 9-inch Green Vinyl Floor Tiles and Mastic	Kitchen Floor	Yes <input type="checkbox"/> No <input checked="" type="checkbox"/>	Good <input type="checkbox"/> Fair <input checked="" type="checkbox"/> Poor <input type="checkbox"/>	High <input checked="" type="checkbox"/> Med <input type="checkbox"/> Low <input type="checkbox"/>	Yes <input type="checkbox"/> No <input checked="" type="checkbox"/>		Tile = 3% Chrysotile Mastic = Trace <1% Chrysotile
N/A	A-67	Gray Fibrous Sheet Material (electrical panel)	Electric Panel	Yes <input type="checkbox"/> No <input checked="" type="checkbox"/>	Good <input checked="" type="checkbox"/> Fair <input type="checkbox"/> Poor <input type="checkbox"/>	High <input checked="" type="checkbox"/> Med <input type="checkbox"/> Low <input type="checkbox"/>	Yes <input type="checkbox"/> No <input checked="" type="checkbox"/>		No Asbestos Detected

## TABLE 3 ASBESTOS BULK SAMPLING DATA SHEETS

Project: El Sereno Community Building  
 Address: 4721 Klamath Street  
 Los Angeles, California

Sheet 18 of 22  
 Date: August 19, 2011

Industrial Hygienist and California Certified  
 Asbestos Consultant and No: Ron Miller, Cert. # 92-0470  
 Job No.: 29405516.10000

Floor	Sample Number	Material Sampled	Sample Location	Material			Photo	Quantity	Results
				Friable	Condition	Accessibility			
Ext.	A-68	Pink Counter Top	Kitchen Counter Top	Yes <input type="checkbox"/> No <input checked="" type="checkbox"/>	Good <input checked="" type="checkbox"/> Fair <input type="checkbox"/> Poor <input type="checkbox"/>	High <input checked="" type="checkbox"/> Med <input type="checkbox"/> Low <input type="checkbox"/>	Yes <input type="checkbox"/> No <input checked="" type="checkbox"/>		No Asbestos Detected
Ext.	A-69	Black Mastic	Kitchen Area	Yes <input type="checkbox"/> No <input checked="" type="checkbox"/>	Good <input type="checkbox"/> Fair <input type="checkbox"/> Poor <input checked="" type="checkbox"/>	High <input checked="" type="checkbox"/> Med <input type="checkbox"/> Low <input type="checkbox"/>	Yes <input type="checkbox"/> No <input checked="" type="checkbox"/>		No Asbestos Detected
Ext.	A-70	12-inch by 12-inch Ceiling Tile Mastic	Ceiling of Building	Yes <input type="checkbox"/> No <input checked="" type="checkbox"/>	Good <input type="checkbox"/> Fair <input type="checkbox"/> Poor <input checked="" type="checkbox"/>	High <input type="checkbox"/> Med <input type="checkbox"/> Low <input checked="" type="checkbox"/>	Yes <input type="checkbox"/> No <input checked="" type="checkbox"/>		No Asbestos Detected
N/A	A-71	12-inch by 12-inch Ceiling Tile Mastic	Ceiling of Building	Yes <input type="checkbox"/> No <input checked="" type="checkbox"/>	Good <input type="checkbox"/> Fair <input checked="" type="checkbox"/> Poor <input type="checkbox"/>	High <input type="checkbox"/> Med <input type="checkbox"/> Low <input checked="" type="checkbox"/>	Yes <input type="checkbox"/> No <input checked="" type="checkbox"/>		No Asbestos Detected

## TABLE 3 ASBESTOS BULK SAMPLING DATA SHEETS

Project: El Sereno Community Building  
 Address: 4721 Klamath Street  
 Los Angeles, California

Sheet 19 of 22  
 Date: August 19, 2011

Industrial Hygienist and California Certified  
 Asbestos Consultant and No: Ron Miller, Cert. # 92-0470  
 Job No.: 29405516.10000

Floor	Sample Number	Material Sampled	Sample Location	Material			Photo	Quantity	Results
				Friable	Condition	Accessibility			
Ext.	A-72	12-inch by 12-inch Ceiling Tile Mastic	Ceiling of Building	Yes <input type="checkbox"/> No <input checked="" type="checkbox"/>	Good <input checked="" type="checkbox"/> Fair <input type="checkbox"/> Poor <input type="checkbox"/>	High <input type="checkbox"/> Med <input type="checkbox"/> Low <input checked="" type="checkbox"/>	Yes <input type="checkbox"/> No <input checked="" type="checkbox"/>		No Asbestos Detected
Ext.	A-73	Drywall Material	Storage Area Under the Stage	Yes <input type="checkbox"/> No <input checked="" type="checkbox"/>	Good <input type="checkbox"/> Fair <input type="checkbox"/> Poor <input checked="" type="checkbox"/>	High <input checked="" type="checkbox"/> Med <input type="checkbox"/> Low <input type="checkbox"/>	Yes <input type="checkbox"/> No <input checked="" type="checkbox"/>		No Asbestos Detected
Ext.	A-74	Drywall Material with Black Paper	Storage Area Under the Stage	Yes <input type="checkbox"/> No <input checked="" type="checkbox"/>	Good <input type="checkbox"/> Fair <input type="checkbox"/> Poor <input checked="" type="checkbox"/>	High <input checked="" type="checkbox"/> Med <input type="checkbox"/> Low <input type="checkbox"/>	Yes <input type="checkbox"/> No <input checked="" type="checkbox"/>		No Asbestos Detected
N/A	A-75	Drywall Material with Black Paper	Storage Area Under the Stage	Yes <input type="checkbox"/> No <input checked="" type="checkbox"/>	Good <input checked="" type="checkbox"/> Fair <input type="checkbox"/> Poor <input type="checkbox"/>	High <input checked="" type="checkbox"/> Med <input type="checkbox"/> Low <input type="checkbox"/>	Yes <input type="checkbox"/> No <input checked="" type="checkbox"/>		No Asbestos Detected

## TABLE 3 ASBESTOS BULK SAMPLING DATA SHEETS

Project: El Sereno Community Building  
Address: 4721 Klamath Street  
Los Angeles, California

Sheet 20 of 22  
Date: August 19, 2011

Industrial Hygienist and California Certified  
Asbestos Consultant and No: Ron Miller, Cert. # 92-0470  
Job No.: 29405516.10000

Floor	Sample Number	Material Sampled	Sample Location	Material			Photo	Quantity	Results
				Friable	Condition	Accessibility			
Ext.	A-76	Drywall Material with Black Paper	Storage Area Under the Stage	Yes <input type="checkbox"/> No <input checked="" type="checkbox"/>	Good <input type="checkbox"/> Fair <input type="checkbox"/> Poor <input checked="" type="checkbox"/>	High <input checked="" type="checkbox"/> Med <input type="checkbox"/> Low <input type="checkbox"/>	Yes <input type="checkbox"/> No <input checked="" type="checkbox"/>		No Asbestos Detected
Ext.	A-77	White Fibrous HVAC Duct Covering Material	Mechanical Room	Yes <input checked="" type="checkbox"/> No <input type="checkbox"/>	Good <input type="checkbox"/> Fair <input type="checkbox"/> Poor <input checked="" type="checkbox"/>	High <input checked="" type="checkbox"/> Med <input type="checkbox"/> Low <input type="checkbox"/>	Yes <input type="checkbox"/> No <input checked="" type="checkbox"/>		60% Chrysotile
Ext.	A-78	White Fibrous HVAC Duct Covering Material	Mechanical Room	Yes <input checked="" type="checkbox"/> No <input type="checkbox"/>	Good <input type="checkbox"/> Fair <input checked="" type="checkbox"/> Poor <input type="checkbox"/>	High <input checked="" type="checkbox"/> Med <input type="checkbox"/> Low <input type="checkbox"/>	Yes <input type="checkbox"/> No <input checked="" type="checkbox"/>		60% Chrysotile
N/A	A-79	White Fibrous HVAC Duct Covering Material	Mechanical Room	Yes <input checked="" type="checkbox"/> No <input type="checkbox"/>	Good <input type="checkbox"/> Fair <input checked="" type="checkbox"/> Poor <input type="checkbox"/>	High <input checked="" type="checkbox"/> Med <input type="checkbox"/> Low <input type="checkbox"/>	Yes <input type="checkbox"/> No <input checked="" type="checkbox"/>		60% Chrysotile

## TABLE 3 ASBESTOS BULK SAMPLING DATA SHEETS

Project: El Sereno Community Building  
 Address: 4721 Klamath Street  
 Los Angeles, California

Sheet 21 of 22  
 Date: August 19, 2011

Industrial Hygienist and California Certified  
 Asbestos Consultant and No: Ron Miller, Cert. # 92-0470  
 Job No.: 29405516.10000

Floor	Sample Number	Material Sampled	Sample Location	Material			Photo	Quantity	Results
				Friable	Condition	Accessibility			
Ext.	A-80	Drywall Backer Board Material	Interior Wall	Yes <input type="checkbox"/> No <input checked="" type="checkbox"/>	Good <input type="checkbox"/> Fair <input type="checkbox"/> Poor <input checked="" type="checkbox"/>	High <input checked="" type="checkbox"/> Med <input type="checkbox"/> Low <input type="checkbox"/>	Yes <input type="checkbox"/> No <input checked="" type="checkbox"/>		No Asbestos Detected
Ext.	A-81	Drywall Backer Board Material	Interior Wall	Yes <input type="checkbox"/> No <input checked="" type="checkbox"/>	Good <input checked="" type="checkbox"/> Fair <input type="checkbox"/> Poor <input type="checkbox"/>	High <input checked="" type="checkbox"/> Med <input type="checkbox"/> Low <input type="checkbox"/>	Yes <input type="checkbox"/> No <input checked="" type="checkbox"/>		No Asbestos Detected
Ext.	A-82	Drywall Backer Board Material	Interior Wall	Yes <input type="checkbox"/> No <input checked="" type="checkbox"/>	Good <input type="checkbox"/> Fair <input type="checkbox"/> Poor <input checked="" type="checkbox"/>	High <input checked="" type="checkbox"/> Med <input type="checkbox"/> Low <input type="checkbox"/>	Yes <input type="checkbox"/> No <input checked="" type="checkbox"/>		No Asbestos Detected
N/A	A-83	Drywall Backer Board Material	Interior Wall	Yes <input type="checkbox"/> No <input checked="" type="checkbox"/>	Good <input checked="" type="checkbox"/> Fair <input type="checkbox"/> Poor <input type="checkbox"/>	High <input checked="" type="checkbox"/> Med <input type="checkbox"/> Low <input type="checkbox"/>	Yes <input type="checkbox"/> No <input checked="" type="checkbox"/>		No Asbestos Detected

## TABLE 3 ASBESTOS BULK SAMPLING DATA SHEETS

Project: El Sereno Community Building  
 Address: 4721 Klamath Street  
 Los Angeles, California

Sheet 22 of 22  
 Date: August 19, 2011

Industrial Hygienist and California Certified  
 Asbestos Consultant and No: Ron Miller, Cert. # 92-0470  
 Job No.: 29405516.10000

Floor	Sample Number	Material Sampled	Sample Location	Material			Photo	Quantity	Results
				Friable	Condition	Accessibility			
Ext.	A-84	Drywall Material Backer Board Material	Interior Wall	Yes <input type="checkbox"/> No <input checked="" type="checkbox"/>	Good <input type="checkbox"/> Fair <input type="checkbox"/> Poor <input checked="" type="checkbox"/>	High <input checked="" type="checkbox"/> Med <input type="checkbox"/> Low <input type="checkbox"/>	Yes <input type="checkbox"/> No <input checked="" type="checkbox"/>		No Asbestos Detected



## TABLE 4 LEAD BULK SAMPLING DATA SHEETS

Project: El Sereno Community Building  
 Address: 4721 Klamath Street  
 Los Angeles, California

Sheet 1 of 8

Date: August 19, 2011

Industrial Hygienist and California Certified  
 Lead Based Paint Consultant and No: Ron Miller, Cert. # 5228  
 Job No.: 29405516.10000

Unit	Sample Number	Material Sampled	Sample Location	Material			Photo	Quantity	Results (ppm)
				Flaking	Condition	Accessibility			
CB	L-1	Tan Exterior Wall Paint	Exterior Wall	Yes <input checked="" type="checkbox"/> No <input type="checkbox"/>	Good <input type="checkbox"/> Fair <input type="checkbox"/> Poor <input checked="" type="checkbox"/>	High <input checked="" type="checkbox"/> Med <input type="checkbox"/> Low <input type="checkbox"/>	Yes <input checked="" type="checkbox"/> No <input type="checkbox"/>		17,000
CB	L-2	Tan Exterior Wall Paint	Exterior Wall	Yes <input checked="" type="checkbox"/> No <input type="checkbox"/>	Good <input type="checkbox"/> Fair <input type="checkbox"/> Poor <input checked="" type="checkbox"/>	High <input checked="" type="checkbox"/> Med <input type="checkbox"/> Low <input type="checkbox"/>	Yes <input type="checkbox"/> No <input checked="" type="checkbox"/>		22,000
CB	L-3	Tan Exterior Wall Paint	Exterior Wall	Yes <input checked="" type="checkbox"/> No <input type="checkbox"/>	Good <input type="checkbox"/> Fair <input type="checkbox"/> Poor <input checked="" type="checkbox"/>	High <input checked="" type="checkbox"/> Med <input type="checkbox"/> Low <input type="checkbox"/>	Yes <input checked="" type="checkbox"/> No <input type="checkbox"/>		1,100

## TABLE 4 LEAD BULK SAMPLING DATA SHEETS

Project: El Sereno Community Building  
 Address: 4721 Klamath Street  
 Los Angeles, California

Sheet 2 of 8  
 Date: August 19, 2011

Industrial Hygienist and California Certified  
 Lead Based Paint Consultant and No: Ron Miller, Cert. # 5228  
 Job No.: 29405516.10000

Unit	Sample Number	Material Sampled	Sample Location	Material			Photo	Quantity	Results (ppm)
				Flaking	Condition	Accessibility			
CB	L-4	Tan Exterior Wall Paint	Exterior Wall	Yes <input checked="" type="checkbox"/> No <input type="checkbox"/>	Good <input type="checkbox"/> Fair <input type="checkbox"/> Poor <input checked="" type="checkbox"/>	High <input checked="" type="checkbox"/> Med <input type="checkbox"/> Low <input type="checkbox"/>	Yes <input checked="" type="checkbox"/> No <input type="checkbox"/>		340
CB	L-5	Tan Exterior Wall Paint	Exterior Wall	Yes <input checked="" type="checkbox"/> No <input type="checkbox"/>	Good <input type="checkbox"/> Fair <input type="checkbox"/> Poor <input checked="" type="checkbox"/>	High <input checked="" type="checkbox"/> Med <input type="checkbox"/> Low <input type="checkbox"/>	Yes <input type="checkbox"/> No <input checked="" type="checkbox"/>		6,400
CB	L-6	Tan Exterior Wall Paint	Exterior Wall of the Office structure	Yes <input checked="" type="checkbox"/> No <input type="checkbox"/>	Good <input type="checkbox"/> Fair <input type="checkbox"/> Poor <input checked="" type="checkbox"/>	High <input checked="" type="checkbox"/> Med <input type="checkbox"/> Low <input type="checkbox"/>	Yes <input type="checkbox"/> No <input checked="" type="checkbox"/>		810
CB	L-7	Tan Exterior Wall Paint	Exterior Wall of the Office Structure	Yes <input checked="" type="checkbox"/> No <input type="checkbox"/>	Good <input type="checkbox"/> Fair <input type="checkbox"/> Poor <input checked="" type="checkbox"/>	High <input checked="" type="checkbox"/> Med <input type="checkbox"/> Low <input type="checkbox"/>	Yes <input type="checkbox"/> No <input checked="" type="checkbox"/>		3,600

## TABLE 4 LEAD BULK SAMPLING DATA SHEETS

Project: El Sereno Community Building  
 Address: 4721 Klamath Street  
 Los Angeles, California

Sheet 3 of 8  
 Date: August 19, 2011

Industrial Hygienist and California Certified  
 Lead Based Paint Consultant and No: Ron Miller, Cert. # 5228  
 Job No.: 29405516.10000

Unit	Sample Number	Material Sampled	Sample Location	Material			Photo	Quantity	Results (ppm)
				Flaking	Condition	Accessibility			
CB	L-8	Tan Paint on Wood Wall	Exterior Wood Wall by the tennis court	Yes <input checked="" type="checkbox"/> No <input type="checkbox"/>	Good <input type="checkbox"/> Fair <input type="checkbox"/> Poor <input checked="" type="checkbox"/>	High <input checked="" type="checkbox"/> Med <input type="checkbox"/> Low <input type="checkbox"/>	Yes <input checked="" type="checkbox"/> No <input type="checkbox"/>		350
CB	L-9	Tan Paint on Wood Wall	Exterior Wood Wall by the tennis court	Yes <input checked="" type="checkbox"/> No <input type="checkbox"/>	Good <input type="checkbox"/> Fair <input type="checkbox"/> Poor <input checked="" type="checkbox"/>	High <input checked="" type="checkbox"/> Med <input type="checkbox"/> Low <input type="checkbox"/>	Yes <input type="checkbox"/> No <input checked="" type="checkbox"/>		580
CB	L-10	Tan Paint on Trim Canopy	Wood Trim Canopy	Yes <input checked="" type="checkbox"/> No <input type="checkbox"/>	Good <input type="checkbox"/> Fair <input type="checkbox"/> Poor <input checked="" type="checkbox"/>	High <input checked="" type="checkbox"/> Med <input type="checkbox"/> Low <input type="checkbox"/>	Yes <input type="checkbox"/> No <input checked="" type="checkbox"/>		14,000
CB	L-11	Tan Paint on Window Sill	Window Sill	Yes <input checked="" type="checkbox"/> No <input type="checkbox"/>	Good <input type="checkbox"/> Fair <input type="checkbox"/> Poor <input checked="" type="checkbox"/>	High <input checked="" type="checkbox"/> Med <input type="checkbox"/> Low <input type="checkbox"/>	Yes <input type="checkbox"/> No <input checked="" type="checkbox"/>		8,500

## TABLE 4 LEAD BULK SAMPLING DATA SHEETS

Project: El Sereno Community Building  
 Address: 4721 Klamath Street  
 Los Angeles, California

Sheet 4 of 8  
 Date: August 19, 2011

Industrial Hygienist and California Certified  
 Lead Based Paint Consultant and No: Ron Miller, Cert. # 5228  
 Job No.: 29405516.10000

Unit	Sample Number	Material Sampled	Sample Location	Material			Photo	Quantity	Results (ppm)
				Flaking	Condition	Accessibility			
CB	L-12	Tan Paint on the Building Trim	Wood Trim over the Auditorium Door	Yes <input checked="" type="checkbox"/> No <input type="checkbox"/>	Good <input type="checkbox"/> Fair <input type="checkbox"/> Poor <input checked="" type="checkbox"/>	High <input checked="" type="checkbox"/> Med <input type="checkbox"/> Low <input type="checkbox"/>	Yes <input checked="" type="checkbox"/> No <input type="checkbox"/>		52,000
CB	L-13	Tan Paint on Window Sill	Window Sill on the Office Structure	Yes <input checked="" type="checkbox"/> No <input type="checkbox"/>	Good <input type="checkbox"/> Fair <input type="checkbox"/> Poor <input checked="" type="checkbox"/>	High <input checked="" type="checkbox"/> Med <input type="checkbox"/> Low <input type="checkbox"/>	Yes <input type="checkbox"/> No <input checked="" type="checkbox"/>		35,000
CB	L-14	Tan Paint on the Building Trim	Wood Trim on the Office Structure	Yes <input checked="" type="checkbox"/> No <input type="checkbox"/>	Good <input type="checkbox"/> Fair <input type="checkbox"/> Poor <input checked="" type="checkbox"/>	High <input checked="" type="checkbox"/> Med <input type="checkbox"/> Low <input type="checkbox"/>	Yes <input type="checkbox"/> No <input checked="" type="checkbox"/>		70,000
CB	L-15	Tan Paint on the Interior Wall and Trim	Interior Wall of the Office Structure	Yes <input checked="" type="checkbox"/> No <input type="checkbox"/>	Good <input type="checkbox"/> Fair <input type="checkbox"/> Poor <input checked="" type="checkbox"/>	High <input checked="" type="checkbox"/> Med <input type="checkbox"/> Low <input type="checkbox"/>	Yes <input type="checkbox"/> No <input checked="" type="checkbox"/>		9,300

## TABLE 4 LEAD BULK SAMPLING DATA SHEETS

Project: El Sereno Community Building  
 Address: 4721 Klamath Street  
 Los Angeles, California

Sheet 5 of 8  
 Date: August 19, 2011

Industrial Hygienist and California Certified  
 Lead Based Paint Consultant and No: Ron Miller, Cert. # 5228  
 Job No.: 29405516.10000

Unit	Sample Number	Material Sampled	Sample Location	Material			Photo	Quantity	Results (ppm)
				Flaking	Condition	Accessibility			
CB	L-16	Tan Paint on the Interior Wall and Trim	Interior Wall of the Office Structure	Yes <input checked="" type="checkbox"/> No <input type="checkbox"/>	Good <input type="checkbox"/> Fair <input type="checkbox"/> Poor <input checked="" type="checkbox"/>	High <input checked="" type="checkbox"/> Med <input type="checkbox"/> Low <input type="checkbox"/>	Yes <input checked="" type="checkbox"/> No <input type="checkbox"/>		5,200
CB	L-17	Off-White Paint on the Interior Trim	Auditorium Wall	Yes <input checked="" type="checkbox"/> No <input type="checkbox"/>	Good <input type="checkbox"/> Fair <input type="checkbox"/> Poor <input checked="" type="checkbox"/>	High <input checked="" type="checkbox"/> Med <input type="checkbox"/> Low <input type="checkbox"/>	Yes <input type="checkbox"/> No <input checked="" type="checkbox"/>		2,900
CB	L-18	Off-White Paint on the Interior Trim	Auditorium Wall	Yes <input checked="" type="checkbox"/> No <input type="checkbox"/>	Good <input type="checkbox"/> Fair <input type="checkbox"/> Poor <input checked="" type="checkbox"/>	High <input checked="" type="checkbox"/> Med <input type="checkbox"/> Low <input type="checkbox"/>	Yes <input type="checkbox"/> No <input checked="" type="checkbox"/>		2,800
CB	L-19	Off-White Paint on the Interior Trim	Wall Trim	Yes <input checked="" type="checkbox"/> No <input type="checkbox"/>	Good <input type="checkbox"/> Fair <input type="checkbox"/> Poor <input checked="" type="checkbox"/>	High <input checked="" type="checkbox"/> Med <input type="checkbox"/> Low <input type="checkbox"/>	Yes <input type="checkbox"/> No <input checked="" type="checkbox"/>		2,900

## TABLE 4 LEAD BULK SAMPLING DATA SHEETS

Project: El Sereno Community Building  
 Address: 4721 Klamath Street  
 Los Angeles, California

Sheet 6 of 8  
 Date: August 19, 2011

Industrial Hygienist and California Certified  
 Lead Based Paint Consultant and No: Ron Miller, Cert. # 5228  
 Job No.: 29405516.10000

Unit	Sample Number	Material Sampled	Sample Location	Material			Photo	Quantity	Results (ppm)
				Flaking	Condition	Accessibility			
CB	L-20	Off-White Paint on the Interior Wall	Interior Wall	Yes <input checked="" type="checkbox"/> No <input type="checkbox"/>	Good <input type="checkbox"/> Fair <input type="checkbox"/> Poor <input checked="" type="checkbox"/>	High <input checked="" type="checkbox"/> Med <input type="checkbox"/> Low <input type="checkbox"/>	Yes <input checked="" type="checkbox"/> No <input type="checkbox"/>		1,800
CB	L-21	Off-White Paint on the Interior Wall	Interior Wall	Yes <input checked="" type="checkbox"/> No <input type="checkbox"/>	Good <input type="checkbox"/> Fair <input type="checkbox"/> Poor <input checked="" type="checkbox"/>	High <input checked="" type="checkbox"/> Med <input type="checkbox"/> Low <input type="checkbox"/>	Yes <input type="checkbox"/> No <input checked="" type="checkbox"/>		480
CB	L-22	Off-White Paint on the Interior Wall	Interior Wall	Yes <input checked="" type="checkbox"/> No <input type="checkbox"/>	Good <input type="checkbox"/> Fair <input type="checkbox"/> Poor <input checked="" type="checkbox"/>	High <input checked="" type="checkbox"/> Med <input type="checkbox"/> Low <input type="checkbox"/>	Yes <input type="checkbox"/> No <input checked="" type="checkbox"/>		630
CB	L-23	Pink Ceramic Tile	Women's Restroom	Yes <input type="checkbox"/> No <input checked="" type="checkbox"/>	Good <input checked="" type="checkbox"/> Fair <input type="checkbox"/> Poor <input type="checkbox"/>	High <input checked="" type="checkbox"/> Med <input type="checkbox"/> Low <input type="checkbox"/>	Yes <input type="checkbox"/> No <input checked="" type="checkbox"/>		860

## TABLE 4 LEAD BULK SAMPLING DATA SHEETS

Project: El Sereno Community Building  
 Address: 4721 Klamath Street  
 Los Angeles, California

Sheet 7 of 8

Date: August 19, 2011

Industrial Hygienist and California Certified  
 Lead Based Paint Consultant and No: Ron Miller, Cert. # 5228  
 Job No.: 29405516.10000

Unit	Sample Number	Material Sampled	Sample Location	Material			Photo	Quantity	Results (ppm)
				Flaking	Condition	Accessibility			
CB	L-24	Yellow Ceramic Tile	Men's Restroom	Yes <input type="checkbox"/> No <input checked="" type="checkbox"/>	Good <input checked="" type="checkbox"/> Fair <input type="checkbox"/> Poor <input type="checkbox"/>	High <input checked="" type="checkbox"/> Med <input type="checkbox"/> Low <input type="checkbox"/>	Yes <input checked="" type="checkbox"/> No <input type="checkbox"/>		7,400
CB	L-25	Yellow Ceramic Tile	Men's Restroom	Yes <input type="checkbox"/> No <input checked="" type="checkbox"/>	Good <input checked="" type="checkbox"/> Fair <input type="checkbox"/> Poor <input type="checkbox"/>	High <input checked="" type="checkbox"/> Med <input type="checkbox"/> Low <input type="checkbox"/>	Yes <input type="checkbox"/> No <input checked="" type="checkbox"/>		4,400
CB	L-26	Off-White/Pink Paint in the Women's Restroom	Women;s Restroom	Yes <input checked="" type="checkbox"/> No <input type="checkbox"/>	Good <input type="checkbox"/> Fair <input type="checkbox"/> Poor <input checked="" type="checkbox"/>	High <input checked="" type="checkbox"/> Med <input type="checkbox"/> Low <input type="checkbox"/>	Yes <input type="checkbox"/> No <input checked="" type="checkbox"/>		6,400
CB	L-27	Off-White Paint in the Men;s restroom	Men's Restroom	Yes <input checked="" type="checkbox"/> No <input type="checkbox"/>	Good <input type="checkbox"/> Fair <input type="checkbox"/> Poor <input checked="" type="checkbox"/>	High <input checked="" type="checkbox"/> Med <input type="checkbox"/> Low <input type="checkbox"/>	Yes <input type="checkbox"/> No <input checked="" type="checkbox"/>		5,200

## TABLE 4 LEAD BULK SAMPLING DATA SHEETS

Project: El Sereno Community Building  
 Address: 4721 Klamath Street  
 Los Angeles, California

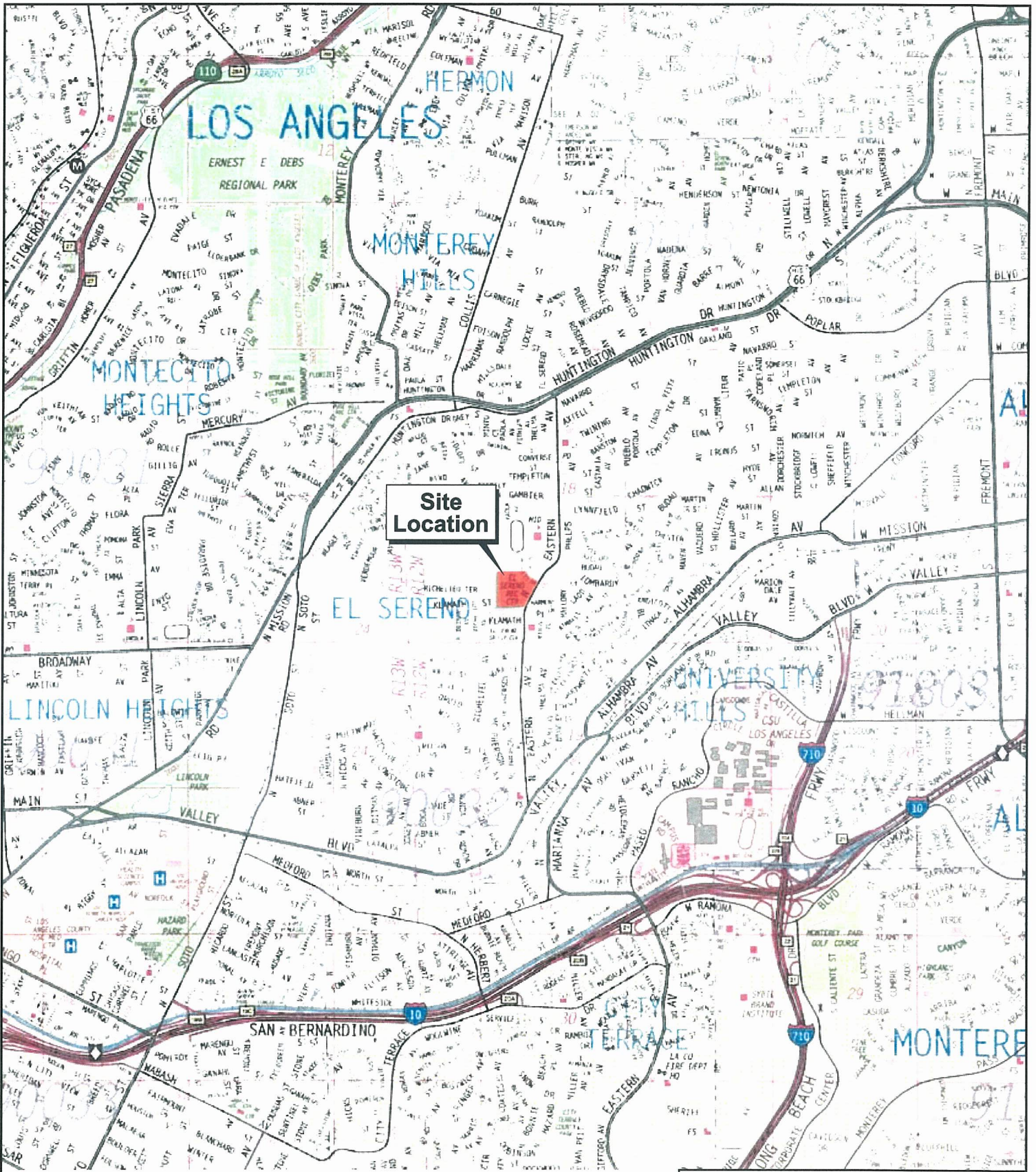
Sheet 8 of 8  
 Date: August 19, 2011

Industrial Hygienist and California Certified  
 Lead Based Paint Consultant and No: Ron Miller, Cert. # 5228  
 Job No.: 29405516.10000

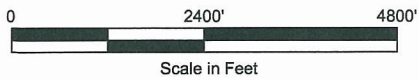
Unit	Sample Number	Material Sampled	Sample Location	Material			Photo	Quantity	Results (ppm)
				Flaking	Condition	Accessibility			
CB	L-28	Light Green Paint on the Kitchen Wall	Kitchen Wall	Yes <input checked="" type="checkbox"/> No <input type="checkbox"/>	Good <input type="checkbox"/> Fair <input type="checkbox"/> Poor <input checked="" type="checkbox"/>	High <input checked="" type="checkbox"/> Med <input type="checkbox"/> Low <input type="checkbox"/>	Yes <input checked="" type="checkbox"/> No <input type="checkbox"/>		5,200
CB	L-29	White Paint on the Steel "I" Beam	Steel Roof Support Beam	Yes <input type="checkbox"/> No <input checked="" type="checkbox"/>	Good <input checked="" type="checkbox"/> Fair <input type="checkbox"/> Poor <input type="checkbox"/>	High <input type="checkbox"/> Med <input type="checkbox"/> Low <input checked="" type="checkbox"/>	Yes <input type="checkbox"/> No <input checked="" type="checkbox"/>		2,300
CB	L-30	White Paint on the Steel "I" Beam	Steel Roof Support Beam	Yes <input type="checkbox"/> No <input checked="" type="checkbox"/>	Good <input checked="" type="checkbox"/> Fair <input type="checkbox"/> Poor <input type="checkbox"/>	High <input type="checkbox"/> Med <input type="checkbox"/> Low <input checked="" type="checkbox"/>	Yes <input type="checkbox"/> No <input checked="" type="checkbox"/>		7,400
CB	L-31	White Paint on Wall	Interior Hallway by the Stage Area	Yes <input checked="" type="checkbox"/> No <input type="checkbox"/>	Good <input type="checkbox"/> Fair <input type="checkbox"/> Poor <input checked="" type="checkbox"/>	High <input checked="" type="checkbox"/> Med <input type="checkbox"/> Low <input type="checkbox"/>	Yes <input type="checkbox"/> No <input checked="" type="checkbox"/>		5,900



## **Figures**



Source: Thomas Bros. Maps, Los Angeles Street Guide, 2009.



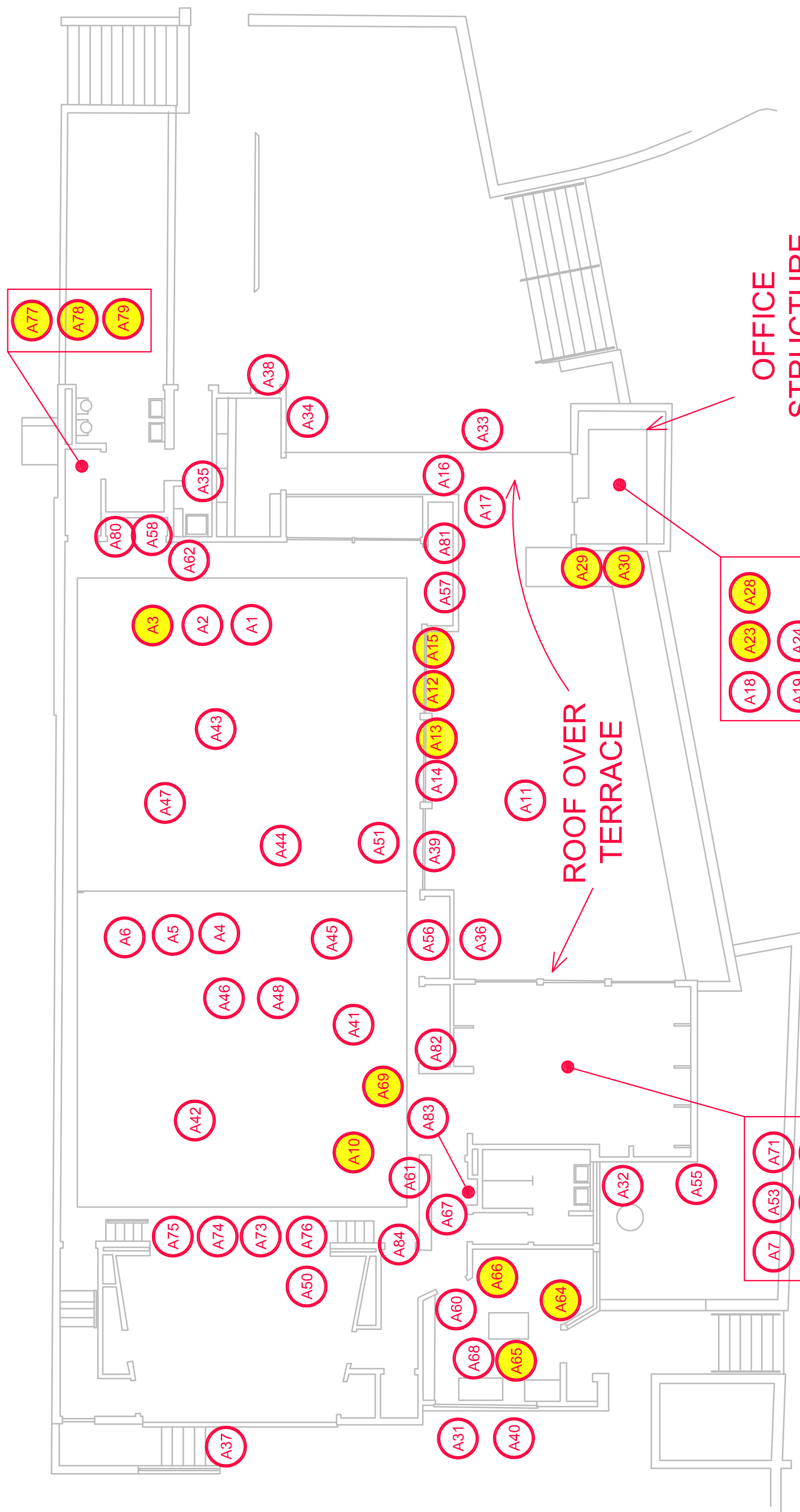
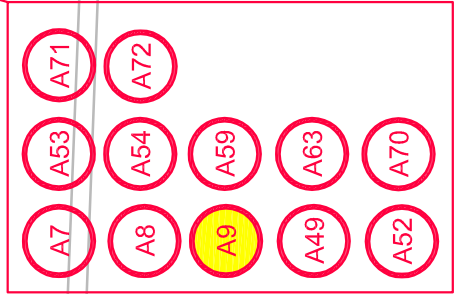
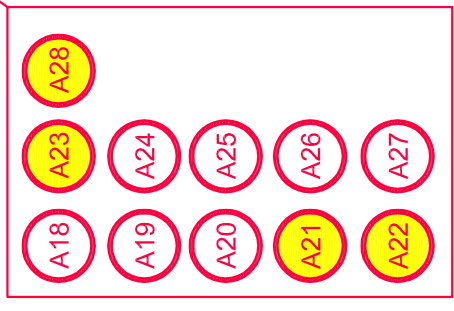
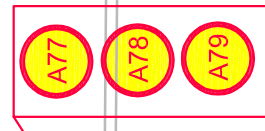
Scale in Feet



**URS**

**LOCATION MAP  
EL SERENO RECREATION CENTER  
4721 KLAMATH ST.  
LOS ANGELES CALIFORNIA**

Proj. No.: 29405516	Date: SEPTEMBER 2011
Project: LOS ANGELES CITY DEPARTMENT OF RECREATION AND PARKS	Figure: 1



 YELLOW INDICATES  
ASBESTOS DETECTED

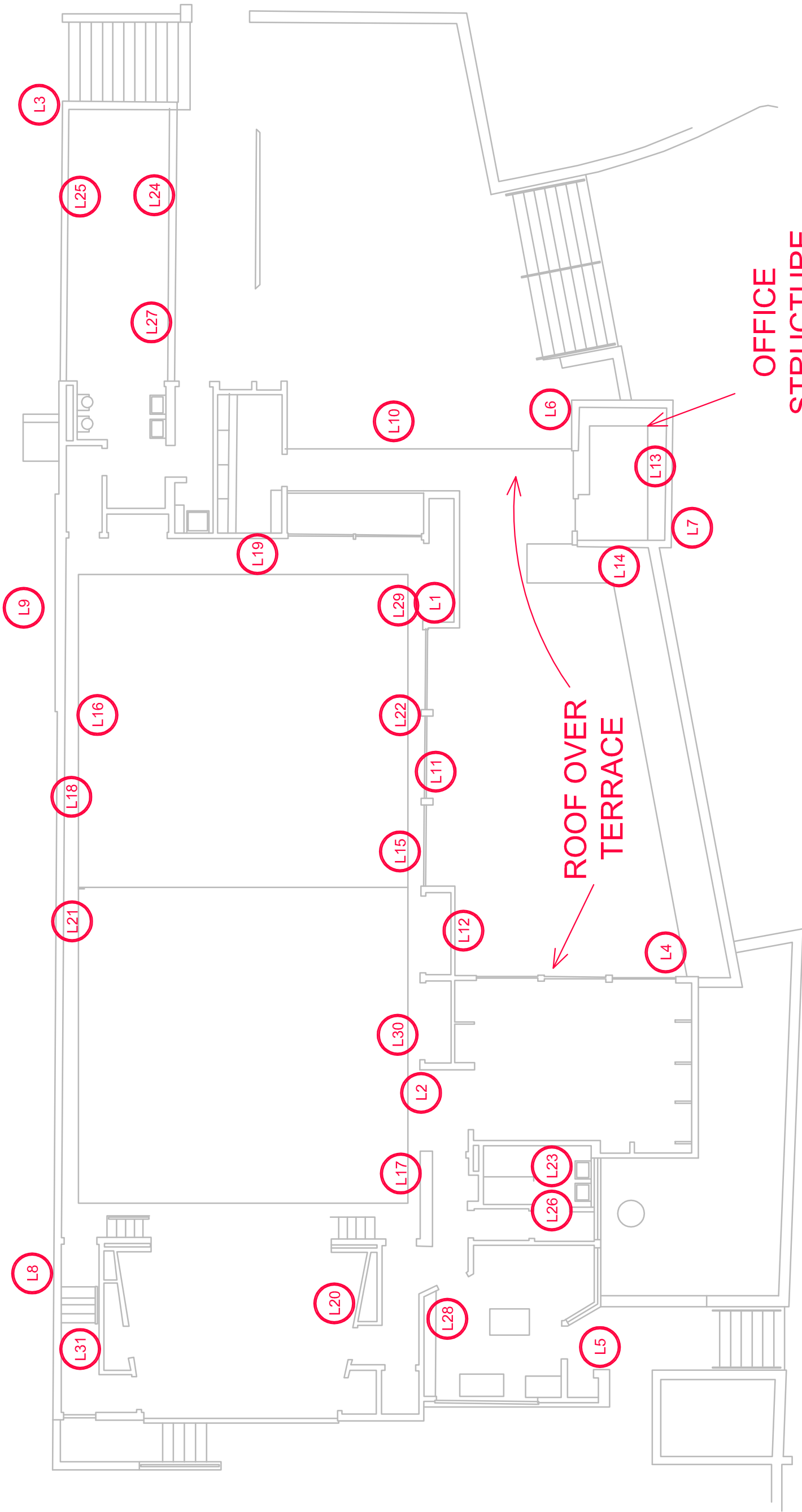


EL SERENO RECREATION CENTER  
COMMUNITY BUILDING  
ASBESTOS BULK SAMPLING LOCATIONS

Proj. No.: 29405516 Date: SEPTEMBER 2011

Project: DEPT. OF RECREATION AND PARKS Figure:  
CITY OF LOS ANGELES 2

NOT TO SCALE



EL SERENO RECREATION CENTER  
COMMUNITY BUILDING  
LEAD-BASED PAINT BULK  
SAMPLING LOCATIONS

Proj. No.: 29405516

Date: SEPTEMBER 2011

Project: DEPT. OF RECREATION AND PARKS  
CITY OF LOS ANGELES

Figure:

3

NOT TO SCALE

## **Appendix A**

### **Photographs**



**Photograph 1:** View of the 9-inch by 9-inch asbestos containing vinyl floor tiles located in the “office” structure at the Community Building.



**Photograph 2:** View of the non-asbestos containing 12-inch by 12-inch vinyl floor tiles located in the auditorium and craft room of the Community Building.



**Photograph 3:** View of the asbestos containing insulation material located on the HVAC ducting in the mechanical room of the Community Building.



**Photograph 4:** View of the Community Building located at the El Sereno Recreation Center.



**Photograph 5:** View of the corrugated asbestos cement board material located on the lower section of the "office" structure at the Community Building.



**Photograph 6:** View of the corrugated asbestos cement board material located on the exterior of the Community Building.





**Photograph 7:** View of the asbestos- containing roofing mastic material located on the roof of the Community Building.

## **Appendix B**

### **Asbestos Laboratory Analytical Reports and Chain-of-Custody Records**



AMERISCI

**AmeriSci Los Angeles**

24416 SOUTH MAIN STREET • SUITE 308

CARSON, CA 90745

TEL: (310) 834-4868 • FAX: (310) 834-4772

*EL Sereno*

August 26, 2011

URS Corporation / Santa Ana  
Attn: RA Miller  
2020 East First Street  
Suite 400  
Santa Ana, CA 92705

RE: URS Corporation / Santa Ana  
Job Number 911081743  
P.O. # LAC Parks  
LA. City Park; Asbestos

Dear RA Miller:

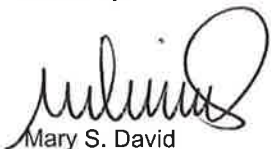
Enclosed are the results for polarized light microscopy analysis (PLM) of the following URS Corporation / Santa Ana samples received at AmeriSci on Tuesday, August 23, 2011, for a 5 day turnaround:

A1, A2, A3, A4, A5, A6, A7, A8, A9, A10, A11, A12, A13, A14, A15, A16, A17, A18, A19, A20, A21, A22, A23, A24, A25, A26, A27, A28, A29, A30, A31, A32, A33, A34, A35, A36, A37, A38, A39, A40, A41, A42, A43, A44, A45, A46, A47, A48, A49, A50, A51, A52, A53, A54, A55, A56, A57, A58, A59, A60, A61, A62, A63, A64, A65, A66, A67, A68, A69, A70, A71, A72, A73, A74, A75, A76, A77, A78, A79, A80, A81, A82, A83, A84

The 84 samples contained in Ziplock Bags were shipped to AmeriSci via Federal Express 8757 0987 4000. These samples were prepared and analyzed according to the EPA Interim Method (EPA 600/M4-82-020 per 40 CFR 763, subpt F, App. A). The samples were evaluated for homogeneity by low power stereomicroscopy. Asbestos fibers were identified by PLM and dispersion staining through the determination of the required optical properties including: morphology, color, pleochroism, refractive indices, birefringence, extinction and sign of elongation. The required analytical information, analysis results, analyst signature and laboratory identification is contained in the Analyst's Report.

This report relates ONLY to the sample analysis expressed as percent asbestos. The CV for this analysis is expected to range from 0.3 to 1.2, depending on the quantity of analyte present. AmeriSci assumes no responsibility for customer supplied data such as "sample type", "location", or "area sampled". This report must not be used to claim product endorsement by AmeriSci, NVLAP or any agency of the U. S. Government. The National Institute of Standards and Technology Accreditation AmeriSci appreciates this opportunity to serve your organization. Please contact us for any further assistance or with any questions.

Sincerely,



Mary S. David  
Client Services Manager



**AmeriSci Los Angeles**

24416 S. Main Street, Ste 308  
Carson, California 90745  
TEL: (310) 834-4868 • FAX: (310) 834-4772

## PLM Bulk Asbestos Report

URS Corporation / Santa Ana  
Attn: RA Miller  
2020 East First Street  
Suite 400  
Santa Ana, CA 92705

**Date Received** 08/23/11  
**Date Examined** 08/26/11  
**RE:** LA. City Park; Asbestos

**AmeriSci Job #** 911081743  
**P.O. #** LAC Parks  
**Page** 1 of 18

Client No. / HGA	Lab No.	Asbestos Present	Total % Asbestos
A1 <b>Location:</b> Rolled Roofing Material	911081743-01	No	NAD (by CVES) by Raymundo Orozco on 08/26/11
<b>Analyst Description:</b> Black, Heterogeneous, Fibrous, Bulk Material			
<b>Asbestos Types:</b>			
<b>Other Material:</b> Cellulose 30 %, Non-fibrous 70 %			
A2 <b>Location:</b> Roofing Felt	911081743-02	No	NAD (by CVES) by Raymundo Orozco on 08/26/11
<b>Analyst Description:</b> Black, Homogeneous, Fibrous, Bulk Material			
<b>Asbestos Types:</b>			
<b>Other Material:</b> Cellulose 60 %, Non-fibrous 40 %			
A3 <b>Location:</b> Mastic Roof	911081743-03	Yes	4 % (by CVES) by Raymundo Orozco on 08/26/11
<b>Analyst Description:</b> Black, Homogeneous, Non-Fibrous, Bulk Material			
<b>Asbestos Types:</b> Chrysotile 4.0 %			
<b>Other Material:</b> Non-fibrous 96 %			
A4 <b>Location:</b> Rolled Roofing Material	911081743-04	No	NAD (by CVES) by Raymundo Orozco on 08/26/11
<b>Analyst Description:</b> Black, Heterogeneous, Fibrous, Bulk Material			
<b>Asbestos Types:</b>			
<b>Other Material:</b> Fibrous glass 10 %, Non-fibrous 90 %			
A5 <b>Location:</b> Roofing Felt	911081743-05	No	NAD (by CVES) by Raymundo Orozco on 08/26/11
<b>Analyst Description:</b> Black, Heterogeneous, Fibrous, Bulk Material			
<b>Asbestos Types:</b>			
<b>Other Material:</b> Cellulose 60 %, Non-fibrous 40 %			

# PLM Bulk Asbestos Report

LA. City Park; Asbestos

Client No. / HGA	Lab No.	Asbestos Present	Total % Asbestos
A6 Location: Roofing Mastic	911081743-06	No	NAD (by CVES) by Raymundo Orozco on 08/26/11
<b>Analyst Description:</b> Black, Heterogeneous, Fibrous, Bulk Material <b>Asbestos Types:</b> <b>Other Material:</b> Cellulose 10 %, Non-fibrous 90 %			
A7 Location: Rooled Roofing Material	911081743-07	No	NAD (by CVES) by Raymundo Orozco on 08/26/11
<b>Analyst Description:</b> Black, Heterogeneous, Fibrous, Bulk Material <b>Asbestos Types:</b> <b>Other Material:</b> Fibrous glass 10 %, Non-fibrous 90 %			
A8 Location: Roofing Felt	911081743-08	No	NAD (by CVES) by Raymundo Orozco on 08/26/11
<b>Analyst Description:</b> Black, Heterogeneous, Fibrous, Bulk Material <b>Asbestos Types:</b> <b>Other Material:</b> Cellulose 40 %, Non-fibrous 60 %			
A9 Location: Roofing Mastic	911081743-09	Yes	5 % (by CVES) by Raymundo Orozco on 08/26/11
<b>Analyst Description:</b> Black, Homogeneous, Non-Fibrous, Bulk Material <b>Asbestos Types:</b> Chrysotile 5.0 % <b>Other Material:</b> Non-fibrous 95 %			
A10 Location: Transite Pipe 4-Inch	911081743-10	Yes	20 % (by CVES) by Raymundo Orozco on 08/26/11
<b>Analyst Description:</b> Grey, Homogeneous, Fibrous, Cementitious, Bulk Material <b>Asbestos Types:</b> Chrysotile 20.0 % <b>Other Material:</b> Non-fibrous 80 %			
A11 Location: Ceiling Insulation	911081743-11	No	NAD (by CVES) by Raymundo Orozco on 08/26/11
<b>Analyst Description:</b> Grey, Homogeneous, Non-Fibrous, Bulk Material <b>Asbestos Types:</b> <b>Other Material:</b> Fibrous glass 90 %, Non-fibrous 10 %			

Client Name: URS Corporation / Santa Ana

**PLM Bulk Asbestos Report**

LA. City Park; Asbestos

Client No. / HGA	Lab No.	Asbestos Present	Total % Asbestos
A12	911081743-12	Yes	20 %
Location: Transite Siding			(by CVES) by Raymundo Orozco on 08/26/11
Analyst Description: Grey, Homogeneous, Fibrous, Cementitious, Bulk Material			
Asbestos Types: Chrysotile 20.0 %			
Other Material: Non-fibrous 80 %			
A13	911081743-13	Yes	Trace (<1 %)
Location: Stucco Exterior			(by CVES) by Raymundo Orozco on 08/26/11
Analyst Description: Grey/Green, Homogeneous, Non-Fibrous, Cementitious, Bulk Material			
Asbestos Types: Chrysotile <1. %			
Other Material: Non-fibrous 100 %			
A14	911081743-14	No	NAD
Location: Stucco Barrier Paper			(by CVES) by Raymundo Orozco on 08/26/11
Analyst Description: Black, Heterogeneous, Fibrous, Bulk Material			
Asbestos Types:			
Other Material: Cellulose 60 %, Non-fibrous 40 %			
A15	911081743-15	Yes	20 %
Location: Transite Panel			(by CVES) by Raymundo Orozco on 08/26/11
Analyst Description: Grey, Homogeneous, Fibrous, Cementitious, Bulk Material			
Asbestos Types: Chrysotile 20.0 %			
Other Material: Non-fibrous 80 %			
A16	911081743-16	No	NAD
Location: Stucco Material			(by CVES) by Raymundo Orozco on 08/26/11
Analyst Description: Grey, Homogeneous, Non-Fibrous, Cementitious, Bulk Material			
Asbestos Types:			
Other Material: Non-fibrous 100 %			
A17	911081743-17	No	NAD
Location: Stucco Barrier Paper			(by CVES) by Raymundo Orozco on 08/26/11
Analyst Description: Black, Heterogeneous, Fibrous, Bulk Material			
Asbestos Types:			
Other Material: Cellulose 60 %, Non-fibrous 40 %			

Client Name: URS Corporation / Santa Ana

**PLM Bulk Asbestos Report**

LA. City Park; Asbestos

Client No. / HGA	Lab No.	Asbestos Present	Total % Asbestos
A18	911081743-18	No	NAD
Location: Rolled Roofing Material			(by CVES) by Raymundo Orozco on 08/26/11
Analyst Description: Black, Homogeneous, Fibrous, Bulk Material			
Asbestos Types:			
Other Material: Fibrous glass 10 %, Non-fibrous 90 %			
A19	911081743-19	No	NAD
Location: Roofing Paper			(by CVES) by Raymundo Orozco on 08/26/11
Analyst Description: Black, Heterogeneous, Fibrous, Bulk Material			
Asbestos Types:			
Other Material: Cellulose 60 %, Non-fibrous 40 %			
A20	911081743-20	No	NAD
Location: Roofing Mastic			(by CVES) by Raymundo Orozco on 08/26/11
Analyst Description: Black, Homogeneous, Non-Fibrous, Bulk Material			
Asbestos Types:			
Other Material: Cellulose 5 %, Non-fibrous 95 %			
A21	911081743-21L1	Yes	3 %
Location: 9-Inch x 9-Inch Salmon VFT w/ Mastic			(by CVES) by Raymundo Orozco on 08/26/11
Analyst Description: Beige, Homogeneous, Non-Fibrous, Floor Tile			
Asbestos Types: Chrysotile 3.0 %			
Other Material: Non-fibrous 97 %			
A21	911081743-21L2	Yes	3 %
Location: 9-Inch x 9-Inch Salmon VFT w/ Mastic			(by CVES) by Raymundo Orozco on 08/26/11
Analyst Description: Black, Homogeneous, Non-Fibrous, Mastic			
Asbestos Types: Chrysotile 3.0 %			
Other Material: Non-fibrous 97 %			
A22	911081743-22L1	Yes	3 %
Location: 9-Inch x 9-Inch Salmon VFT w/ Mastic			(by CVES) by Raymundo Orozco on 08/26/11
Analyst Description: Gold, Homogeneous, Non-Fibrous, Floor Tile			
Asbestos Types: Chrysotile 3.0 %			
Other Material: Non-fibrous 97 %			

# PLM Bulk Asbestos Report

LA. City Park; Asbestos

Client No. / HGA	Lab No.	Asbestos Present	Total % Asbestos
A22	911081743-22L2 Location: 9-Inch x 9-Inch Salmon VFT w/ Mastic	Yes	3 % (by CVES) by Raymundo Orozco on 08/26/11
<b>Analyst Description:</b> Black, Homogeneous, Non-Fibrous, Mastic <b>Asbestos Types:</b> Chrysotile 3.0 % <b>Other Material:</b> Non-fibrous 97 %			
A23	911081743-23L1 Location: 9-Inch x 9-Inch Salmon VFT w/ Mastic	Yes	3 % (by CVES) by Raymundo Orozco on 08/26/11
<b>Analyst Description:</b> Beige, Homogeneous, Non-Fibrous, Floor Tile <b>Asbestos Types:</b> Chrysotile 3.0 % <b>Other Material:</b> Non-fibrous 97 %			
A23	911081743-23L2 Location: 9-Inch x 9-Inch Salmon VFT w/ Mastic	Yes	3 % (by CVES) by Raymundo Orozco on 08/26/11
<b>Analyst Description:</b> Black, Homogeneous, Non-Fibrous, Mastic <b>Asbestos Types:</b> Chrysotile 3.0 % <b>Other Material:</b> Non-fibrous 97 %			
A24	911081743-24 Location: Plaster w/ Skim Coat	No	NAD (by CVES) by Raymundo Orozco on 08/26/11
<b>Analyst Description:</b> Beige, Homogeneous, Non-Fibrous, Cementitious, Bulk Material <b>Asbestos Types:</b> <b>Other Material:</b> Non-fibrous 100 %			
A25	911081743-25 Location: Plaster w/ Skim Coat	No	NAD (by CVES) by Raymundo Orozco on 08/26/11
<b>Analyst Description:</b> Beige, Homogeneous, Non-Fibrous, Cementitious, Bulk Material <b>Asbestos Types:</b> <b>Other Material:</b> Non-fibrous 100 %			
A26	911081743-26 Location: Drywall Material	No	NAD (by CVES) by Raymundo Orozco on 08/26/11
<b>Analyst Description:</b> Beige/Brown, Heterogeneous, Fibrous, Bulk Material <b>Asbestos Types:</b> <b>Other Material:</b> Cellulose 10 %, Non-fibrous 90 %			



# PLM Bulk Asbestos Report

LA. City Park; Asbestos

Client No. / HGA	Lab No.	Asbestos Present	Total % Asbestos
A27 <b>Location:</b> Drywall Material	911081743-27	No	NAD (by CVES) by Raymundo Orozco on 08/26/11
<b>Analyst Description:</b> Black, Homogeneous, Fibrous, Bulk Material <b>Asbestos Types:</b> <b>Other Material:</b> Cellulose 10 %, Non-fibrous 90 %			
A28 <b>Location:</b> Cove Base w/ Mastic	911081743-28L1	No	NAD (by CVES) by Raymundo Orozco on 08/26/11
<b>Analyst Description:</b> Black, Homogeneous, Fibrous, Cove Base <b>Asbestos Types:</b> <b>Other Material:</b> Non-fibrous 100 %			
A28 <b>Location:</b> Cove Base w/ Mastic	911081743-28L2	Yes	Trace (<1 %) (by CVES) by Raymundo Orozco on 08/26/11
<b>Analyst Description:</b> Brown, Homogeneous, Non-Fibrous, Mastic <b>Asbestos Types:</b> Tremolite <1. % <b>Other Material:</b> Fibrous Talc 2 %, Non-fibrous 98 %			
A29 <b>Location:</b> Transite Panel 1/2-Inch	911081743-29	Yes	20 % (by CVES) by Raymundo Orozco on 08/26/11
<b>Analyst Description:</b> Grey, Homogeneous, Fibrous, Cementitious, Bulk Material <b>Asbestos Types:</b> Chrysotile 20.0 % <b>Other Material:</b> Non-fibrous 80 %			
A30 <b>Location:</b> Transite Panel 1/8-Inch	911081743-30	Yes	20 % (by CVES) by Raymundo Orozco on 08/26/11
<b>Analyst Description:</b> Grey, Homogeneous, Fibrous, Cementitious, Bulk Material <b>Asbestos Types:</b> Chrysotile 20.0 % <b>Other Material:</b> Non-fibrous 80 %			
A31 <b>Location:</b> Exterior Stucco Material	911081743-31	No	NAD (by CVES) by Raymundo Orozco on 08/26/11
<b>Analyst Description:</b> Green/Grey, Homogeneous, Non-Fibrous, Cementitious, Bulk Material <b>Asbestos Types:</b> <b>Other Material:</b> Non-fibrous 100 %			

# PLM Bulk Asbestos Report

LA. City Park; Asbestos

Client No. / HGA	Lab No.	Asbestos Present	Total % Asbestos
A32	911081743-32	No	NAD
<p><b>Location:</b> Exterior Stucco Material</p> <p><b>Analyst Description:</b> Green/Grey, Homogeneous, Non-Fibrous, Cementitious, Bulk Material</p> <p><b>Asbestos Types:</b></p> <p><b>Other Material:</b> Non-fibrous 100 %</p>			<p>(by CVES)</p> <p>by Raymundo Orozco</p> <p>on 08/26/11</p>
A33	911081743-33	No	NAD
<p><b>Location:</b> Exterior Stucco Material</p> <p><b>Analyst Description:</b> Green/Grey, Homogeneous, Non-Fibrous, Cementitious, Bulk Material</p> <p><b>Asbestos Types:</b></p> <p><b>Other Material:</b> Non-fibrous 100 %</p>			<p>(by CVES)</p> <p>by Raymundo Orozco</p> <p>on 08/26/11</p>
A34	911081743-34	No	NAD
<p><b>Location:</b> Exterior Stucco Material</p> <p><b>Analyst Description:</b> Green/Grey, Homogeneous, Non-Fibrous, Cementitious, Bulk Material</p> <p><b>Asbestos Types:</b></p> <p><b>Other Material:</b> Non-fibrous 100 %</p>			<p>(by CVES)</p> <p>by Raymundo Orozco</p> <p>on 08/26/11</p>
A35	911081743-35	No	NAD
<p><b>Location:</b> Exterior Stucco Material</p> <p><b>Analyst Description:</b> Green/Grey, Homogeneous, Non-Fibrous, Cementitious, Bulk Material</p> <p><b>Asbestos Types:</b></p> <p><b>Other Material:</b> Non-fibrous 100 %</p>			<p>(by CVES)</p> <p>by Raymundo Orozco</p> <p>on 08/26/11</p>
A36	911081743-36	No	NAD
<p><b>Location:</b> Exterior Stucco Material</p> <p><b>Analyst Description:</b> Green/Grey, Homogeneous, Non-Fibrous, Cementitious, Bulk Material</p> <p><b>Asbestos Types:</b></p> <p><b>Other Material:</b> Non-fibrous 100 %</p>			<p>(by CVES)</p> <p>by Raymundo Orozco</p> <p>on 08/26/11</p>
A37	911081743-37	No	NAD
<p><b>Location:</b> Exterior Stucco Material</p> <p><b>Analyst Description:</b> Grey/Green, Homogeneous, Non-Fibrous, Cementitious, Bulk Material</p> <p><b>Asbestos Types:</b></p> <p><b>Other Material:</b> Non-fibrous 100 %</p>			<p>(by CVES)</p> <p>by Raymundo Orozco</p> <p>on 08/26/11</p>

# PLM Bulk Asbestos Report

LA. City Park; Asbestos

Client No. / HGA	Lab No.	Asbestos Present	Total % Asbestos
A38 <b>Location:</b> Window Putty	911081743-38	<b>No</b>	NAD (by CVES) by Raymundo Orozco on 08/26/11
<b>Analyst Description:</b> Beige, Homogeneous, Non-Fibrous, Bulk Material			
<b>Asbestos Types:</b>			
<b>Other Material:</b> Non-fibrous 100 %			
A39 <b>Location:</b> Window Putty	911081743-39	<b>No</b>	NAD (by CVES) by Raymundo Orozco on 08/26/11
<b>Analyst Description:</b> Beige, Homogeneous, Non-Fibrous, Bulk Material			
<b>Asbestos Types:</b>			
<b>Other Material:</b> Non-fibrous 100 %			
A40 <b>Location:</b> Window Putty	911081743-40	<b>No</b>	NAD (by CVES) by Raymundo Orozco on 08/26/11
<b>Analyst Description:</b> Beige, Homogeneous, Non-Fibrous, Bulk Material			
<b>Asbestos Types:</b>			
<b>Other Material:</b> Non-fibrous 100 %			
A41 <b>Location:</b> White 12"x12" Ceiling Tiles (Holes)	911081743-41	<b>No</b>	NAD (by CVES) by Raymundo Orozco on 08/26/11
<b>Analyst Description:</b> Beige/Brown, Homogeneous, Fibrous, Bulk Material			
<b>Asbestos Types:</b>			
<b>Other Material:</b> Cellulose 90 %, Non-fibrous 10 %			
A42 <b>Location:</b> White 12"x12" Ceiling Tiles (Holes)	911081743-42	<b>No</b>	NAD (by CVES) by Raymundo Orozco on 08/26/11
<b>Analyst Description:</b> Beige/Brown, Homogeneous, Fibrous, Bulk Material			
<b>Asbestos Types:</b>			
<b>Other Material:</b> Cellulose 90 %, Non-fibrous 10 %			
A43 <b>Location:</b> White 12"x12" Ceiling Tiles (Holes)	911081743-43	<b>No</b>	NAD (by CVES) by Raymundo Orozco on 08/26/11
<b>Analyst Description:</b> Beige/Brown, Homogeneous, Fibrous, Bulk Material			
<b>Asbestos Types:</b>			
<b>Other Material:</b> Cellulose 90 %, Non-fibrous 10 %			

# PLM Bulk Asbestos Report

LA. City Park; Asbestos

Client No. / HGA	Lab No.	Asbestos Present	Total % Asbestos
A44	911081743-44 Location: White 12"x12" Ceiling Tiles (Slats)	No	NAD (by CVES) by Raymundo Orozco on 08/26/11
<b>Analyst Description:</b> Beige/Brown, Homogeneous, Fibrous, Bulk Material <b>Asbestos Types:</b> <b>Other Material:</b> Cellulose 90 %, Non-fibrous 10 %			
A45	911081743-45 Location: White 12"x12" Ceiling Tiles (Slats)	No	NAD (by CVES) by Raymundo Orozco on 08/26/11
<b>Analyst Description:</b> Beige/Brown, Homogeneous, Fibrous, Bulk Material <b>Asbestos Types:</b> <b>Other Material:</b> Cellulose 90 %, Non-fibrous 10 %			
A46	911081743-46 Location: White 12"x12" Ceiling Tiles (Slats)	No	NAD (by CVES) by Raymundo Orozco on 08/26/11
<b>Analyst Description:</b> Beige/Brown, Homogeneous, Fibrous, Bulk Material <b>Asbestos Types:</b> <b>Other Material:</b> Cellulose 90 %, Non-fibrous 10 %			
A47	911081743-47 Location: White 12"x12" Ceiling Tiles (Solid)	No	NAD (by CVES) by Raymundo Orozco on 08/26/11
<b>Analyst Description:</b> Beige/Brown, Homogeneous, Fibrous, Bulk Material <b>Asbestos Types:</b> <b>Other Material:</b> Cellulose 90 %, Non-fibrous 10 %			
A48	911081743-48 Location: White 12"x12" Ceiling Tiles (Solid)	No	NAD (by CVES) by Raymundo Orozco on 08/26/11
<b>Analyst Description:</b> Beige/Brown, Homogeneous, Fibrous, Bulk Material <b>Asbestos Types:</b> <b>Other Material:</b> Cellulose 90 %, Non-fibrous 10 %			
A49	911081743-49 Location: White 12"x12" Ceiling Tiles (Solid)	No	NAD (by CVES) by Raymundo Orozco on 08/26/11
<b>Analyst Description:</b> Beige/Brown, Homogeneous, Fibrous, Bulk Material <b>Asbestos Types:</b> <b>Other Material:</b> Cellulose 90 %, Non-fibrous 10 %			

**PLM Bulk Asbestos Report**

LA. City Park; Asbestos

<b>Client No. / HGA</b>	<b>Lab No.</b>	<b>Asbestos Present</b>	<b>Total % Asbestos</b>
A50 <b>Location:</b> Stage Curtain (High)	911081743-50	<b>No</b>	NAD (by CVES) by Raymundo Orozco on 08/26/11
<b>Analyst Description:</b> Beige, Homogeneous, Fibrous, Bulk Material			
<b>Asbestos Types:</b>			
<b>Other Material:</b> Cellulose 90 %, Non-fibrous 10 %			
A51 <b>Location:</b> Side Window Curtain (High)	911081743-51	<b>No</b>	NAD (by CVES) by Raymundo Orozco on 08/26/11
<b>Analyst Description:</b> Beige, Homogeneous, Fibrous, Bulk Material			
<b>Asbestos Types:</b>			
<b>Other Material:</b> Cellulose 80 %, Synthetic fibers 10 %, Non-fibrous 10 %			
A52 <b>Location:</b> Tan 12"x12" VFT w/ Mastic	911081743-52L1	<b>No</b>	NAD (by CVES) by Raymundo Orozco on 08/26/11
<b>Analyst Description:</b> Beige, Homogeneous, Non-Fibrous, Floor Tile			
<b>Asbestos Types:</b>			
<b>Other Material:</b> Non-fibrous 100 %			
A52 <b>Location:</b> Tan 12"x12" VFT w/ Mastic	911081743-52L2	<b>No</b>	NAD (by CVES) by Raymundo Orozco on 08/26/11
<b>Analyst Description:</b> Black, Homogeneous, Non-Fibrous, Mastic			
<b>Asbestos Types:</b>			
<b>Other Material:</b> Cellulose 2 %, Non-fibrous 98 %			
A53 <b>Location:</b> Tan 12"x12" VFT w/ Mastic	911081743-53L1	<b>No</b>	NAD (by CVES) by Raymundo Orozco on 08/26/11
<b>Analyst Description:</b> Beige, Homogeneous, Non-Fibrous, Floor Tile			
<b>Asbestos Types:</b>			
<b>Other Material:</b> Non-fibrous 100 %			
A53 <b>Location:</b> Tan 12"x12" VFT w/ Mastic	911081743-53L2	<b>No</b>	NAD (by CVES) by Raymundo Orozco on 08/26/11
<b>Analyst Description:</b> Black, Homogeneous, Non-Fibrous, Mastic			
<b>Asbestos Types:</b>			
<b>Other Material:</b> Cellulose 3 %, Non-fibrous 97 %			

# PLM Bulk Asbestos Report

LA. City Park; Asbestos

Client No. / HGA	Lab No.	Asbestos Present	Total % Asbestos
A54 <b>Location:</b> Tan 12"x12" VFT w/ Mastic	911081743-54L1	<b>No</b>	NAD (by CVES) by Raymundo Orozco on 08/26/11
<b>Analyst Description:</b> Beige, Homogeneous, Non-Fibrous, Floor Tile			
<b>Asbestos Types:</b>			
<b>Other Material:</b> Non-fibrous 100 %			
A54 <b>Location:</b> Tan 12"x12" VFT w/ Mastic	911081743-54L2	<b>No</b>	NAD (by CVES) by Raymundo Orozco on 08/26/11
<b>Analyst Description:</b> Black, Homogeneous, Non-Fibrous, Mastic			
<b>Asbestos Types:</b>			
<b>Other Material:</b> Cellulose 2 %, Non-fibrous 98 %			
A55 <b>Location:</b> Window Putty	911081743-55	<b>No</b>	NAD (by CVES) by Raymundo Orozco on 08/26/11
<b>Analyst Description:</b> Grey, Homogeneous, Non-Fibrous, Bulk Material			
<b>Asbestos Types:</b>			
<b>Other Material:</b> Non-fibrous 100 %			
A56 <b>Location:</b> Plaster w/ Skim Coat Material	911081743-56	<b>No</b>	NAD (by CVES) by Raymundo Orozco on 08/26/11
<b>Analyst Description:</b> Beige, Homogeneous, Non-Fibrous, Cementitious, Bulk Material			
<b>Asbestos Types:</b>			
<b>Other Material:</b> Non-fibrous 100 %			
A57 <b>Location:</b> Plaster w/ Skim Coat Material	911081743-57	<b>No</b>	NAD (by CVES) by Raymundo Orozco on 08/26/11
<b>Analyst Description:</b> Beige, Homogeneous, Non-Fibrous, Cementitious, Bulk Material			
<b>Asbestos Types:</b>			
<b>Other Material:</b> Non-fibrous 100 %			
A58 <b>Location:</b> Plaster w/ Skim Coat Material	911081743-58	<b>No</b>	NAD (by CVES) by Raymundo Orozco on 08/26/11
<b>Analyst Description:</b> Beige, Homogeneous, Non-Fibrous, Cementitious, Bulk Material			
<b>Asbestos Types:</b>			
<b>Other Material:</b> Non-fibrous 100 %			

Client Name: URS Corporation / Santa Ana

**PLM Bulk Asbestos Report**

LA. City Park; Asbestos

<b>Client No. / HGA</b>	<b>Lab No.</b>	<b>Asbestos Present</b>	<b>Total % Asbestos</b>
A59	911081743-59	<b>No</b>	NAD
<b>Location:</b> Plaster w/ Skim Coat Material			(by CVES) by Raymundo Orozco on 08/26/11
<b>Analyst Description:</b> Beige, Homogeneous, Non-Fibrous, Cementitious, Bulk Material			
<b>Asbestos Types:</b>			
<b>Other Material:</b> Non-fibrous 100 %			
A60	911081743-60	<b>No</b>	NAD
<b>Location:</b> Plaster w/ Skim Coat Material			(by CVES) by Raymundo Orozco on 08/26/11
<b>Analyst Description:</b> Beige, Homogeneous, Non-Fibrous, Cementitious, Bulk Material			
<b>Asbestos Types:</b>			
<b>Other Material:</b> Non-fibrous 100 %			
A61	911081743-61L1	<b>No</b>	NAD
<b>Location:</b> Brown Cove Base Material			(by CVES) by Raymundo Orozco on 08/26/11
<b>Analyst Description:</b> Beige, Homogeneous, Non-Fibrous, Cementitious, Cove Base			
<b>Asbestos Types:</b>			
<b>Other Material:</b> Non-fibrous 100 %			
A61	911081743-61L2	<b>No</b>	NAD
<b>Location:</b> Brown Cove Base Material			(by CVES) by Raymundo Orozco on 08/26/11
<b>Analyst Description:</b> Brown, Homogeneous, Non-Fibrous, Mastic			
<b>Asbestos Types:</b>			
<b>Other Material:</b> Wollastonite 3 %, Non-fibrous 97 %			
A62	911081743-62L1	<b>No</b>	NAD
<b>Location:</b> Brown Cove Base Material			(by CVES) by Raymundo Orozco on 08/26/11
<b>Analyst Description:</b> Black, Homogeneous, Non-Fibrous, Cove Base			
<b>Asbestos Types:</b>			
<b>Other Material:</b> Non-fibrous 100 %			
A62	911081743-62L2	<b>No</b>	NAD
<b>Location:</b> Brown Cove Base Material			(by CVES) by Raymundo Orozco on 08/26/11
<b>Analyst Description:</b> Brown, Homogeneous, Non-Fibrous, Mastic			
<b>Asbestos Types:</b>			
<b>Other Material:</b> Wollastonite 4 %, Non-fibrous 96 %			

# PLM Bulk Asbestos Report

LA. City Park; Asbestos

Client No. / HGA	Lab No.	Asbestos Present	Total % Asbestos
A63 <b>Location:</b> Brown Cove Base Material	911081743-63L1	No	NAD (by CVES) by Raymundo Orozco on 08/26/11
<b>Analyst Description:</b> Black, Homogeneous, Non-Fibrous, Cove Base			
<b>Asbestos Types:</b>			
<b>Other Material:</b> Non-fibrous 100 %			
A63 <b>Location:</b> Brown Cove Base Material	911081743-63L2	No	NAD (by CVES) by Raymundo Orozco on 08/26/11
<b>Analyst Description:</b> Brown, Homogeneous, Non-Fibrous, Mastic			
<b>Asbestos Types:</b>			
<b>Other Material:</b> Wollastonite 2 %, Non-fibrous 98 %			
A64 <b>Location:</b> 9-Inch x 9-Inch Green VFT w/ Mastic	911081743-64L1	Yes	3 % (by CVES) by Raymundo Orozco on 08/26/11
<b>Analyst Description:</b> Green, Homogeneous, Non-Fibrous, Floor Tile			
<b>Asbestos Types:</b> Chrysotile 3.0 %			
<b>Other Material:</b> Non-fibrous 97 %			
A64 <b>Location:</b> 9-Inch x 9-Inch Green VFT w/ Mastic	911081743-64L2	Yes	Trace (<1 %) <sup>1</sup> (by CVES) by Raymundo Orozco on 08/26/11
<b>Analyst Description:</b> Black, Homogeneous, Non-Fibrous, Mastic			
<b>Asbestos Types:</b> Chrysotile <1. %			
<b>Other Material:</b> Non-fibrous 100 %			
A65 <b>Location:</b> 9-Inch x 9-Inch Green VFT w/ Mastic	911081743-65L1	Yes	3 % (by CVES) by Raymundo Orozco on 08/26/11
<b>Analyst Description:</b> Black, Homogeneous, Non-Fibrous, Floor Tile			
<b>Asbestos Types:</b> Chrysotile 3.0 %			
<b>Other Material:</b> Non-fibrous 97 %			
A65 <b>Location:</b> 9-Inch x 9-Inch Green VFT w/ Mastic	911081743-65L2	Yes	Trace (<1 %) <sup>1</sup> (by CVES) by Raymundo Orozco on 08/26/11
<b>Analyst Description:</b> Black, Homogeneous, Non-Fibrous, Mastic			
<b>Asbestos Types:</b> Chrysotile <1. %			
<b>Other Material:</b> Non-fibrous 100 %			



# PLM Bulk Asbestos Report

LA. City Park; Asbestos

Client No. / HGA	Lab No.	Asbestos Present	Total % Asbestos
A66 <b>Location:</b> 9-Inch x 9-Inch Green VFT w/ Mastic	911081743-66L1	<b>Yes</b>	3 % (by CVES) by Raymundo Orozco on 08/26/11
<b>Analyst Description:</b> Green, Homogeneous, Non-Fibrous, Floor Tile			
<b>Asbestos Types:</b> Chrysotile 3.0 %			
<b>Other Material:</b> Non-fibrous 97 %			
A66 <b>Location:</b> 9-Inch x 9-Inch Green VFT w/ Mastic	911081743-66L2	<b>Yes</b>	Trace (<1 %) <sup>1</sup> (by CVES) by Raymundo Orozco on 08/26/11
<b>Analyst Description:</b> Black, Homogeneous, Non-Fibrous, Mastic			
<b>Asbestos Types:</b> Chrysotile <1. %			
<b>Other Material:</b> Non-fibrous 100 %			
A67 <b>Location:</b> Gray Fibrous Sheet Material (Elec Panel)	911081743-67	<b>No</b>	NAD (by CVES) by Raymundo Orozco on 08/26/11
<b>Analyst Description:</b> Grey, Heterogeneous, Fibrous, Bulk Material			
<b>Asbestos Types:</b>			
<b>Other Material:</b> Cellulose 90 %, Non-fibrous 10 %			
A68 <b>Location:</b> Pink Counter Top	911081743-68	<b>No</b>	NAD (by CVES) by Raymundo Orozco on 08/26/11
<b>Analyst Description:</b> Brown/Pink, Heterogeneous, Fibrous, Bulk Material			
<b>Asbestos Types:</b>			
<b>Other Material:</b> Cellulose 60 %, Non-fibrous 40 %			
A69 <b>Location:</b> Black Mastic On Tile (Only)	911081743-69L1	<b>No</b>	NAD (by CVES) by Raymundo Orozco on 08/26/11
<b>Analyst Description:</b> White, Homogeneous, Non-Fibrous, Ceramic Tile			
<b>Asbestos Types:</b>			
<b>Other Material:</b> Non-fibrous 100 %			
<b>Comment:</b> Black Mastic Not Found			

# PLM Bulk Asbestos Report

LA. City Park; Asbestos

Client No. / HGA	Lab No.	Asbestos Present	Total % Asbestos
A69	911081743-69L2 Location: Black Mastic On Tile (Only)	No	NAD (by CVES) by Raymundo Orozco on 08/26/11
<b>Analyst Description:</b> Grey, Homogeneous, Non-Fibrous, Cementitious, Grout <b>Asbestos Types:</b> <b>Other Material:</b> Non-fibrous 100 %			
A69	911081743-69L3 Location: Black Mastic On Tile (Only)	No	NAD (by CVES) by Raymundo Orozco on 08/26/11
<b>Analyst Description:</b> Grey, Homogeneous, Non-Fibrous, Cementitious, Cementitious Material <b>Asbestos Types:</b> <b>Other Material:</b> Non-fibrous 100 %			
A70	911081743-70 Location: 1-FT x 1-FT Ceiling Tile Mastic	No	NAD (by CVES) by Raymundo Orozco on 08/26/11
<b>Analyst Description:</b> Brown, Homogeneous, Non-Fibrous, Bulk Material <b>Asbestos Types:</b> <b>Other Material:</b> Non-fibrous 100 %			
A71	911081743-71 Location: 1-FT x 1-FT Ceiling Tile Mastic	No	NAD (by CVES) by Raymundo Orozco on 08/26/11
<b>Analyst Description:</b> Brown, Homogeneous, Non-Fibrous, Bulk Material <b>Asbestos Types:</b> <b>Other Material:</b> Non-fibrous 100 %			
A72	911081743-72 Location: 1-FT x 1-FT Ceiling Tile Mastic	No	NAD (by CVES) by Raymundo Orozco on 08/26/11
<b>Analyst Description:</b> Brown, Homogeneous, Non-Fibrous, Bulk Material <b>Asbestos Types:</b> <b>Other Material:</b> Non-fibrous 100 %			
A73	911081743-73 Location: Drywall Material	No	NAD (by CVES) by Raymundo Orozco on 08/26/11
<b>Analyst Description:</b> Beige/Brown, Heterogeneous, Fibrous, Bulk Material <b>Asbestos Types:</b> <b>Other Material:</b> Cellulose 10 %, Non-fibrous 90 %			

# PLM Bulk Asbestos Report

LA. City Park; Asbestos

Client No. / HGA	Lab No.	Asbestos Present	Total % Asbestos
A74	911081743-74	No	NAD
<p><b>Location:</b> Drywall Material w/ Black Paper</p> <p><b>Analyst Description:</b> Brown/Black, Heterogeneous, Fibrous, Bulk Material</p> <p><b>Asbestos Types:</b></p> <p><b>Other Material:</b> Cellulose 20 %, Non-fibrous 80 %</p>			<p>(by CVES) by Raymundo Orozco on 08/26/11</p>
A75	911081743-75	No	NAD
<p><b>Location:</b> Drywall Material w/ Black Paper</p> <p><b>Analyst Description:</b> Beige/Brown, Heterogeneous, Fibrous, Bulk Material</p> <p><b>Asbestos Types:</b></p> <p><b>Other Material:</b> Cellulose 10 %, Non-fibrous 90 %</p>			<p>(by CVES) by Raymundo Orozco on 08/26/11</p>
A76	911081743-76	No	NAD
<p><b>Location:</b> Drywall Material w/ Black Paper</p> <p><b>Analyst Description:</b> Black/Brown, Homogeneous, Fibrous, Bulk Material</p> <p><b>Asbestos Types:</b></p> <p><b>Other Material:</b> Cellulose 10 %, Non-fibrous 90 %</p>			<p>(by CVES) by Raymundo Orozco on 08/26/11</p>
A77	911081743-77	Yes	60 %
<p><b>Location:</b> White Fibrous HVAC Duct Covering</p> <p><b>Analyst Description:</b> Grey, Heterogeneous, Fibrous, Bulk Material</p> <p><b>Asbestos Types:</b> Chrysotile 60.0 %</p> <p><b>Other Material:</b> Cellulose 5 %, Non-fibrous 35 %</p>			<p>(by CVES) by Raymundo Orozco on 08/26/11</p>
A78	911081743-78	Yes	60 %
<p><b>Location:</b> White Fibrous HVAC Duct Covering</p> <p><b>Analyst Description:</b> Grey, Heterogeneous, Fibrous, Bulk Material</p> <p><b>Asbestos Types:</b> Chrysotile 60.0 %</p> <p><b>Other Material:</b> Cellulose 5 %, Non-fibrous 35 %</p>			<p>(by CVES) by Raymundo Orozco on 08/26/11</p>
A79	911081743-79	Yes	60 %
<p><b>Location:</b> White Fibrous HVAC Duct Covering</p> <p><b>Analyst Description:</b> Grey, Heterogeneous, Fibrous, Bulk Material</p> <p><b>Asbestos Types:</b> Chrysotile 60.0 %</p> <p><b>Other Material:</b> Cellulose 5 %, Non-fibrous 35 %</p>			<p>(by CVES) by Raymundo Orozco on 08/26/11</p>

# PLM Bulk Asbestos Report

LA. City Park; Asbestos

Client No. / HGA	Lab No.	Asbestos Present	Total % Asbestos
A80 Location: Drywall (Backer Board)	911081743-80	No	NAD (by CVES) by Raymundo Orozco on 08/26/11
<b>Analyst Description:</b> Beige/Brown, Heterogeneous, Fibrous, Bulk Material <b>Asbestos Types:</b> <b>Other Material:</b> Cellulose 10 %, Non-fibrous 90 %			
A81 Location: Drywall Material (Backer Board)	911081743-81	No	NAD (by CVES) by Raymundo Orozco on 08/26/11
<b>Analyst Description:</b> Beige/Brown, Heterogeneous, Fibrous, Bulk Material <b>Asbestos Types:</b> <b>Other Material:</b> Cellulose 10 %, Non-fibrous 90 %			
A82 Location: Drywall Material (Backer Board)	911081743-82	No	NAD (by CVES) by Raymundo Orozco on 08/26/11
<b>Analyst Description:</b> Beige/Brown, Heterogeneous, Fibrous, Bulk Material <b>Asbestos Types:</b> <b>Other Material:</b> Cellulose 10 %, Non-fibrous 90 %			
A83 Location: Drywall Material (Backer Board)	911081743-83	No	NAD (by CVES) by Raymundo Orozco on 08/26/11
<b>Analyst Description:</b> Beige/Brown, Heterogeneous, Fibrous, Bulk Material <b>Asbestos Types:</b> <b>Other Material:</b> Cellulose 10 %, Non-fibrous 90 %			
A84 Location: Drywall Material (Backer Board)	911081743-84	No	NAD (by CVES) by Raymundo Orozco on 08/26/11
<b>Analyst Description:</b> Beige/Brown, Heterogeneous, Fibrous, Bulk Material <b>Asbestos Types:</b> <b>Other Material:</b> Cellulose 10 %, Non-fibrous 90 %			

Client Name: URS Corporation / Santa Ana

# PLM Bulk Asbestos Report

LA. City Park; Asbestos

---

## Reporting Notes:

(1) Trace amount of asbestos (<1%) suspected to be inseparable contamination from adjacent layer.

Analyzed By: Raymundo Orozco *RO*; Date Analyzed: 8/26/2011 *8/26/11*

\*NAD = no asbestos detected; Detection Limit <1%; Reporting Limits: CVES = 1%, 400 Pt Ct = 0.25%, 1000 Pt Ct = 0.1%; NA = not analyzed; NA/PS = not analyzed / positive stop; NVA = No Visible Asbestos; PLM (polarized light microscopy) Bulk Asbestos Analysis by EPA 600/M4-82-020 per 40 CFR 763 (NVLAP Lab #200346-0, CA ELAP lab #2322); Note: PLM is not consistently reliable in detecting asbestos in floor coverings and similar NOB materials. TEM is currently the only method that can be used to determine if this material can be considered or treated as non-asbestos-containing in New York State (also see EPA Advisory for floor tile, FR 59, 146, 38970, 8/1/94). NIST Accreditation requirements mandate that this report must not be reproduced except in full with the approval of the laboratory. This PLM report relates ONLY to the items tested.

Reviewed By: *[Signature]* *8/26/11*



# Asbestos, Lead Analysis Chain of Custody

**AMERISCI LOS ANGELES**  
 24416 S Main St. Suite 308  
 Carson, CA 90745  
 Phone (310) 834-4868  
 Fax (310) 834-4772

AMERISCI JOB #:  
911081743

COMPANY: <b>URS Corp</b>	ADDRESS: <b>2020 E First St</b>	P.O.#: <b>LAC Park</b>					
PROJECT INFORMATION	ANALYSIS TYPE	TURNAROUND TIME					AIR FILTER
		RUSH	24 HR	48 HR	72 HR	5 DAY	INFORMATION:
JOB NAME: <b>LA City Park</b>	ASBESTOS TEM AHERA						MCE
JOB NUMBER:	ASBESTOS PLM BULK						PC
JOB MANAGER: <b>RJ Miller</b>	ASBESTOS PCM AIR						25 mm
JOB DESCRIPTION: <b>Asbestos</b>	ASBESTOS PLM 1000 P.C.						37 mm
	LEAD AIR						0.45 um
	LEAD WIPE						0.80 um
	LEAD PAINT / SOLID						TEMP:
	OTHER:						OTHER:

INITIAL RESULTS DELIVERY:  FAX  EMAIL  VERBAL  MAIL ONLY

REPORTS TO: **RJ Miller** PHONE: **714 835 6885**

INVOICE TO: **RJ Miller** FAX: **714 667 7147**

COMMENTS: **RJ Miller 2 @ Cox.net** EMAIL: **RJ.MILLER@COX.NET**

PAGER/CELL: **714 747 8757**

RETURN SAMPLES Yes

SAMPLE ID	SAMPLE LOCATION	START TIME	STOP TIME	TOTAL TIME X	LITERS /MIN.	TOTAL VOLUME	AREA SQUARE FT
A1	Roller Roofing Material						
A2	Roofing Felt						
A3	Roofing Mastix						
A4	Roller Roofing Material						
A5	Roofing Felt						
A6	Roofing Mastix						
A7	Roller Roofing Material						
A8	Roofing Felt						
A9	Roofing Mastix						
A10	Trussing Pipe 4-inch						
A11	Ceiling Insulation						
A12	Trussing Siding						
A13	Stucco Exterior						
A14	Stucco Barrier Paper						
A15	Trussing Panel						
A16	Stucco Material						
A17	Stucco Barrier Paper						
A18	Roller Roofing Material						
A19	Roofing Paper						
A20	Roofing Mastix						

SAMPLED BY: <b>RJ Miller</b>	DATE/TIME: <b>8-19-11</b>	RECEIVED BY:	DATE/TIME:
RELINQUISHED BY:	DATE/TIME:	RECEIVED BY:	DATE/TIME:
RELINQUISHED BY:	DATE/TIME:	RECEIVED IN LAB BY: <b>Pissarai Jones</b>	DATE/TIME: <b>8/29/11 @ 8:50</b>

Asbestos, Environmental Chemistry and Microbiology Analysis

Boston Los Angeles New York Richmond

Page of

Page of



# Asbestos, Lead Analysis Chain of Custody

**AMERISCI LOS ANGELES**  
 24416 S Main St. Suite 308  
 Carson, CA 90745  
 Phone (310) 834-4868  
 Fax (310) 834-4772

AMERISCI JOB #:  
911081743

COMPANY: <b>IRS Corp</b>	ADDRESS: <b>2020 E First St</b>	P.O.#: <b>LAC Park</b>						
PROJECT INFORMATION	ANALYSIS TYPE	TURNAROUND TIME					AIR FILTER INFORMATION:	
		RUSH	24 HR	48 HR	72 HR	5 DAY		
B NAME: <b>A. City Park</b>	ASBESTOS TEM AHERA						MCE	
B NUMBER:	ASBESTOS PLM BULK						PC	
B MANAGER: <b>RJ Miller</b>	ASBESTOS PCM AIR						25 mm	
B DESCRIPTION: <b>Asbestos</b>	ASBESTOS PLM 1000 P.C.						37 mm	
	LEAD AIR						0.45 um	
	LEAD WIPE						0.80 um	
	LEAD PAINT / SOLID						TEMP:	
	OTHER:						OTHER:	

TOTAL RESULTS DELIVERY:  FAX  EMAIL  VERBAL  MAIL ONLY

RETURN SAMPLES YES

REPORTS TO: **RJ Miller** PHONE: **714 835 6885**

VOICE TO: **RJ Miller** FAX: **714 667 7147**

COMMENTS: **RJ Miller 2 @ Cox. wot** EMAIL: **RJ.MILLER@COX.COM**

PAGER/CELL: **714 747 8752**

SAMPLE ID	SAMPLE LOCATION	START TIME	STOP TIME	TOTAL TIME X	LITERS / MIN.	TOTAL VOLUME	AREA SQUARE FT
A 21	9-inch x 8-inch Salses	UFT	UFT				
A 22							
A 23							
A 24	Plaster w/ skin coat						
A 25							
A 26	Drywall material						
A 27							
A 28	Cave Beam w/ mortar						
A 29	Tressita panel 1/2 inch						
A 30	Tressita panel 1/8 inch						
A 31	EXTERIOR STUCCO MATERIAL						
A 32							
A 33							
A 34							
A 35							
A 36							
A 37							
A 38	Window putty						
A 39							
A 40							

SAMPLER BY: <b>RJ Miller</b>	DATE/TIME: <b>8-19-11</b>	RECEIVED BY:	DATE/TIME:
RELINQUISHED BY:	DATE/TIME:	RECEIVED BY:	DATE/TIME:
RELINQUISHED BY:	DATE/TIME:	RECEIVED IN LAB BY: <b>Pissaman Jones</b>	DATE/TIME: <b>8/29/11 @ 8:50</b>



Asbestos, Lead Analysis Chain of Custody

AMERISCI LOS ANGELES  
 24416 S Main St. Suite 308  
 Carson, CA 90745  
 Phone (310) 834-4868  
 Fax (310) 834-4772

AMERISCI JOB #:  
 911081743

COMPANY: IRS Corp ADDRESS: 2020 E First St P.O.#: LAC Park

PROJECT INFORMATION	ANALYSIS TYPE	TURNAROUND TIME					AIR FILTER INFORMATION:	
		RUSH	24 HR	48 HR	72 HR	5 DAY		
B NAME: <u>A. City Park</u>	ASBESTOS TEM AHERA							MCE
B NUMBER:	ASBESTOS PLM BULK							PC
B MANAGER: <u>RJ Miller</u>	ASBESTOS PCM AIR							25 mm
B DESCRIPTION: <u>Asbestos</u>	ASBESTOS PLM 1000 P.C.							37 mm
	LEAD AIR							0.45 um
	LEAD WIPE							0.80 um
	LEAD PAINT / SOLID							TEMP:
	OTHER:							OTHER:

TOTAL RESULTS DELIVERY:  FAX  EMAIL  VERBAL  MAIL ONLY RETURN SAMPLES YES

REPORTS TO: RA Miller PHONE: 714 835 6885

VOICE TO: RA Miller FAX: 714 667 7147

COMMENTS: RAMILLER2@cox.net EMAIL: RAMILLER2@cox.net

PAGER/CELL: 714 747 8753

SAMPLE ID	SAMPLE LOCATION	START TIME	STOP TIME	TOTAL TIME X	LITERS /MIN.	TOTAL VOLUME	AREA SQUARE FT
A 41	white 12" x 12" ceiling tiles						
A 42							
A 43							
A 44							
A 45							
A 46							
A 47							
A 48							
A 49							
A 50	stage curtains (High)						
A 51	side window curtains (High)						
A 52	Tan 12" x 12" UFF w/moist						
A 53							
A 54							
A 55	Window putty						
A 56	Plaster w/ skin coat material						
A 57							
A 58							
A 59							
A 60							

LABELED BY: R Miller DATE/TIME: 8-15-11 RECEIVED BY: \_\_\_\_\_ DATE/TIME: \_\_\_\_\_

RELINQUISHED BY: \_\_\_\_\_ DATE/TIME: \_\_\_\_\_ RECEIVED BY: \_\_\_\_\_ DATE/TIME: \_\_\_\_\_

RELINQUISHED BY: \_\_\_\_\_ DATE/TIME: \_\_\_\_\_ RECEIVED IN LAB BY: Pissamay Jones DATE/TIME: 8/16/11 @ 8:50





Asbestos, Lead Analysis Chain of Custody

AMERISCI LOS ANGELES  
 24416 S Main St. Suite 308  
 Carson, CA 90745  
 Phone (310) 834-4868  
 Fax (310) 834-4772

AMERISCI JOB #:  
 911081743

COMPANY: IRS Corp ADDRESS: 2020 E First St P.O.#: LAC Park

PROJECT INFORMATION	ANALYSIS TYPE	TURNAROUND TIME					AIR FILTER INFORMATION:	
		RUSH	24 HR	48 HR	72 HR	5 DAY		
B NAME: <u>A. City Park</u>	ASBESTOS TEM AHERA							MCE
B NUMBER:	ASBESTOS PLM BULK							PC
B MANAGER: <u>R. J. Miller</u>	ASBESTOS PCM AIR							25 mm
B DESCRIPTION: <u>Asbestos</u>	ASBESTOS PLM 1000 P.C.							37 mm
	LEAD AIR							0.45 um
	LEAD WIPE							0.80 um
	LEAD PAINT / SOLID							TEMP:
	OTHER:							OTHER:

TOTAL RESULTS DELIVERY:  FAX  EMAIL  VERBAL  MAIL ONLY RETURN SAMPLES YES

REPORTS TO: R. J. Miller PHONE: 714 835 6885

VOICE TO: R. J. Miller FAX: 714 667 7147

REMARKS: R. J. Miller 2 @ Cox.net EMAIL: RAMILLER@COX.NET

PAGER/CELL: 714 747 8757

SAMPLE ID	SAMPLE LOCATION	START TIME	STOP TIME	TOTAL TIME X	LITERS /MIN.	TOTAL VOLUME	AREA SQUARE FT
A61	Brown Cove Base Material						
A62							
A63							
A64	9-inch x 9-inch Glass UF 5 / Mastix						
A65							
A66							
A67	gray Fibrous Sheet Material (Electrol)						
A68	Pink Constat Tap						
A69	Black Mastix on tile (only)						
A70	1-Ft x 1-Ft ceiling tile Mastix						
A71							
A72							
A73	Drywall Material						
A74	Drywall Material w/ Black Paper						
A75							
A76							
A77	White Fibrous Home Duct Covering						
A78							
A79							
A80	Drywall (Book Board)						

ACQUIRED BY: R. J. Miller DATE/TIME: 8-19-11 RECEIVED BY: \_\_\_\_\_ DATE/TIME: \_\_\_\_\_

RELINQUISHED BY: \_\_\_\_\_ DATE/TIME: \_\_\_\_\_ RECEIVED BY: \_\_\_\_\_ DATE/TIME: \_\_\_\_\_

RELINQUISHED BY: \_\_\_\_\_ DATE/TIME: \_\_\_\_\_ RECEIVED IN LAB BY: Pissavai Jones DATE/TIME: 8/24/11 @ 8:50

Asbestos, Environmental Chemistry and Microbiology Analysis



# Asbestos, Lead Analysis Chain of Custody

**AMERISCI LOS ANGELES**  
 24416 S Main St. Suite 308  
 Carson, CA 90745  
 Phone (310) 834-4868  
 Fax (310) 834-4772

AMERISCI JOB #:  
911081743

COMPANY: IRS Corp ADDRESS: 2020 E First St P.O.#: LAC Park

PROJECT INFORMATION	ANALYSIS TYPE	TURNAROUND TIME					AIR FILTER INFORMATION:
		RUSH	24 HR	48 HR	72 HR	5 DAY	
B NAME: <u>A. City Park</u>	ASBESTOS TEM AHERA						MCE
B NUMBER:	ASBESTOS PLM BULK						PC
B MANAGER: <u>RJ Miller</u>	ASBESTOS PCM AIR						25 mm
B DESCRIPTION: <u>ASB-5T5S</u>	ASBESTOS PLM 1000 P.C.						37 mm
	LEAD AIR						0.45 um
	LEAD WIPE						0.80 um
	LEAD PAINT / SOLID						TEMP:
	OTHER:						OTHER:

RESULTS DELIVERY:  FAX  EMAIL  VERBAL  MAIL ONLY RETURN SAMPLES YES

REPORTS TO: RAMILLER PHONE: 714 835 6885

VOICE TO: RAMILLER FAX: 714 667 7147

COMMENTS: RAMILLER2 @ Cox.net EMAIL: RAMILLER2@Cox.net

PAGER/CELL: 714 747 8752

SAMPLE ID	SAMPLE LOCATION	START TIME	STOP TIME	TOTAL TIME X	LITERS / MIN.	TOTAL VOLUME	AREA SQUARE FT
<u>A81</u>	<u>Drywall Metaling (Back of Board)</u>						
<u>A82</u>							
<u>A83</u>							
<u>A84</u>							

PREPARED BY: R Miller DATE/TIME: 8-19-11 RECEIVED BY: \_\_\_\_\_ DATE/TIME: \_\_\_\_\_

RELINQUISHED BY: \_\_\_\_\_ DATE/TIME: \_\_\_\_\_ RECEIVED BY: \_\_\_\_\_ DATE/TIME: \_\_\_\_\_

RELINQUISHED BY: \_\_\_\_\_ DATE/TIME: \_\_\_\_\_ RECEIVED IN LAB BY: Pikarini Jones 8/29/11 @ 8:50 DATE/TIME: \_\_\_\_\_

## **Appendix C**

### **Lead Laboratory Analytical Reports and Chain-of-Custody Records**



**AmeriSci Los Angeles**

24416 SOUTH MAIN STREET • SUITE 308

CARSON, CA 90745

TEL: (310) 834-4868 • FAX: (310) 834-4772

August 29, 2011

URS Corporation / Santa Ana  
Attn: Ron Miller  
2020 East First Street  
Suite 400  
Santa Ana, CA 92705

RE: URS Corporation / Santa Ana  
Job Number 411081562  
P.O. #  
LA City Park; Lead Paint

Dear Ron Miller :

Enclosed are the results for lead analysis of the following URS Corporation / Santa Ana sample(s) received at AmeriSci on August 23, 2011, for a 5 day turnaround:

L1, L2, L3, L4, L5, L6, L7, L8, L9, L10, L11, L12, L13, L14, L15, L16, L17, L18, L19, L20, L21, L22, L23, L24, L25, L26, L27, L28, L29, L30, L31

The 31 sample(s) contained in Ziplock Bags were shipped to AmeriSci via Federal Express 8757 0987 4000. The sample(s) were received in Good condition. The sample(s) were prepared and analyzed as indicated on the attached analytical report.

Table I represents a summary of the analysis results. Unless otherwise specified, all quality control data met acceptance criteria.

This report relates ONLY to the sample analysis expressed as lead in ppm (mg/kg). AmeriSci assumes no responsibility for customer supplied data such as "sample location" or "area of collection". Complete analytical documentation is archived and available upon written request. This report must not be reproduced except in full without the written approval of the laboratory.

AmeriSci appreciates this opportunity to serve your organization. Please contact us for any further assistance or questions.

Sincerely,

A handwritten signature in black ink, appearing to read "Mary S. David".

Mary S. David  
Client Services Manager



**AmeriSci Los Angeles**

24416 S. Main Street, Ste 308  
Carson, California 90745  
TEL: (310) 834-4868 • FAX: (310) 834-4772

AmeriSci Job #: 411081562

Date Received: 08/23/11

Date Analyzed: 08/29/11

**Lead Analysis Results**

Paint

EPA Method 3050B/7000B

**URS Corporation / Santa Ana**

Santa Ana, CA

Job Site: LA City Park; Lead Paint

AmeriSci # 411081562	Client Number	Sample Location	% Lead (w/w)	Lead Content (mg/kg = ppm)
01	L1	Exterior Tan Paint	1.7	17,000
02	L2	Exterior Tan Paint	2.2	22,000
03	L3	Exterior Tan Paint	0.11	1,100
04	L4	Exterior Tan Paint	0.034	340
05	L5	Exterior Tan Paint	0.64	6,400
06	L6	Exterior Tan Paint	0.081	810
07	L7	Exterior Tan Paint	0.36	3,600
08	L8	Tan Paint On Wood Wall	0.035	350
09	L9	Tan Paint On Wood Wall	0.058	580
10	L10	Tan Paint Trim Canopy	1.4	14,000
11	L11	Tan Paint Window Sill	0.85	8,500
12	L12	Tan Paint Trim	5.2	52,000
13	L13	Tan Paint Trim Window Sill	3.5	35,000
14	L14	Tan Paint Trim	7.0	70,000
15	L15	Tan Paint Interior Wall Trim Paint	0.93	9,300
16	L16	Tan Paint Interior Wall Trim Paint	0.52	5,200
17	L17	Off-White Trim Paint Interior Auditorium	0.29	2,900
18	L18	Off-White Trim Paint Interior Auditorium	0.28	2,800
19	L19	Off-White Trim Paint	0.29	2,900
20	L20	Off-White Wall Paint	0.18	1,800
21	L21	Off-White Wall Paint	0.048	480
22	L22	Off-White Wall Paint	0.063	630
23	L23	Pink Ceramic Tile	0.086	860
24	L24	Yellow Ceramic Tile	0.74	7,400

AmeriSci Reporting Limit is 0.01%, or 100mg/kg prior to any dilutions due to high analyte concentrations or matrix interferences. AmeriSci does not correct sample results by the blank value. All analytical batch data met quality control criteria unless otherwise noted. CA ELAP No. 2322. AIHA Lab No. 100530.

Reviewed by: 

Analyzed by:   
Dennis S. Liu



**AmeriSci Los Angeles**

24416 S. Main Street, Ste 308  
Carson, California 90745  
TEL: (310) 834-4868 • FAX: (310) 834-4772

AmeriSci Job #: 411081562

Date Received: 08/23/11

Date Analyzed: 08/29/11

**Lead Analysis Results**

Paint

EPA Method 3050B/7000B

**URS Corporation / Santa Ana**


Santa Ana, CA

Job Site: LA City Park; Lead Paint

AmeriSci # 411081562	Client Number	Sample Location	% Lead (w/w)	Lead Content (mg/kg = ppm)
25	L25	Yellow Ceramic Tile	0.44	4,400
26	L26	Off-White / Pink Paint W. Room	0.12	1,200
27	L27	Off-White Paint Men's Room	0.64	6,400
28	L28	L. Green Kitchen Wall Paint	0.52	5,200
29	L29	White Paint Steel " I " Beam	0.23	2,300
30	L30	White Paint Steel " I " Beam	0.74	7,400
31	L31	White Wall Paint	0.59	5,900

AmeriSci Reporting Limit is 0.01%, or 100mg/kg prior to any dilutions due to high analyte concentrations or matrix interferences. AmeriSci does not correct sample results by the blank value. All analytical batch data met quality control criteria unless otherwise noted. CA ELAP No. 2322. AIHA Lab No. 100530.

Reviewed by: 

Analyzed by:   
Dennis S. Liu



Asbestos, Lead Analysis Chain of Custody

AMERISCI LOS ANGELES  
 24416 S Main St. Suite 308  
 Carson, CA 90745  
 Phone (310) 834-4868  
 Fax (310) 834-4772

AMERISCI JOB #: 411081562

COMPANY: <b>URS Corp</b>	ADDRESS: <b>2020 E First St</b>	P.O.#: <b>LAC Park</b>
PROJECT INFORMATION	ANALYSIS TYPE	TURNAROUND TIME
		RUSH 24 HR 48 HR 72 HR 5 DAY
JOB NAME: <b>LA City Park</b>	ASBESTOS TEM AHERA	AIR FILTER INFORMATION:
JOB NUMBER:	ASBESTOS PLM BULK	MCE
JOB MANAGER: <b>RA Miller</b>	ASBESTOS PCM AIR	PC
JOB DESCRIPTION: <b>Lead - Paint</b>	ASBESTOS PLM 1000 P.C.	25 mm
	LEAD AIR	37 mm
	LEAD WIPE	0.45 um
	LEAD PAINT / SOLID	0.80 um
	OTHER:	TEMP:
		OTHER:

INITIAL RESULTS DELIVERY:  FAX  EMAIL  VERBAL  MAIL ONLY

REPORTS TO: **RA Miller** PHONE: **714 835 6886**

INVOICE TO: **RA Miller** FAX: **714 667 7147**

COMMENTS: **RA Miller 2 @ Cox. dot** EMAIL: **RAMILLER2@COX.**

PAGER/CELL: **714 747 8757**

SAMPLE ID	SAMPLE LOCATION	START TIME	STOP TIME	TOTAL TIME X	LITERS / MIN.	TOTAL VOLUME	AREA SQUARE FT
L1	Exterior Tad Paint						
L2							
L3							
L4							
L5							
L6	Exterior Tad Paint						
L7							
L8	Tad Paint on wood wall						
L9							
L10	Tad Paint trim canopy						
L11	Tad Paint window sill						
L12	Tad Paint trim						
L13	Tad Paint trim window sill						
L14	Tad Paint trim						
L15	Tad Paint Interior wall/trim Paint						
L16							
L17	off-white trim Paint Interior Auditorium						
L18							
L19	off-white trim Paint						
L20	off-white wall Paint						

SAMPLED BY: **RA Miller** DATE/TIME: **8-15-11** RECEIVED BY: \_\_\_\_\_ DATE/TIME: \_\_\_\_\_

RELINQUISHED BY: \_\_\_\_\_ DATE/TIME: \_\_\_\_\_ RECEIVED BY: \_\_\_\_\_ DATE/TIME: \_\_\_\_\_

RELINQUISHED BY: \_\_\_\_\_ DATE/TIME: \_\_\_\_\_ RECEIVED IN LAB BY: **Pissarai Jones** 8/29/11 @ 8:50 DATE/TIME: \_\_\_\_\_

Asbestos, Environmental Chemistry and Microbiology Analysis

