

Mobile App

1 DOWNLOAD THE APP

The Alarm.com app for phone and tablet is available for free download on [Google Play Store](#) and [Apple App Store](#).

You can also control and monitor your system using your Apple Watch, Apple TV, Amazon Fire TV, Amazon Echo and Google Home.



2 NAVIGATE THE DASHBOARD

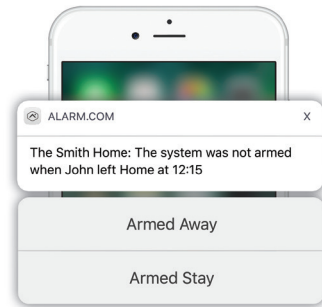
View and control your system from the palm of your hand with the easy-to-navigate Dashboard. Arm and Disarm your panel, adjust Lights, Locks, Thermostats and Garage Doors.*

*These services are only available on certain plans. Please contact your security dealer for more information.

3 ENABLE NOTIFICATIONS

Click Notifications to enable Push Notifications. You can also add or manage your push, text and email notifications on-the-go.

A System Not Armed notification will remind you if you forget to arm you system when you're away from home.



4 ACTIVATE GEO-SERVICES

Enable automatic rules and alerts based on your phone's location through Geo-Services.

Be alerted if you've left home without arming your system, pause video recordings for privacy, and have your thermostat adjust when you're approaching home.

Geo-Services > Toggle to ON > Draw Geo-Fence on your Online Account

TIP: TWO-FACTOR AUTHENTICATION

Add an extra layer of security to protect access to your system. Whenever you sign into your system from a new or untrusted device, you'll have to enter both your password and a code sent to your mobile phone.

Online Account > Settings > Login Information > Two-Factor Authentication



605-339-0575

www.foss-avi.com

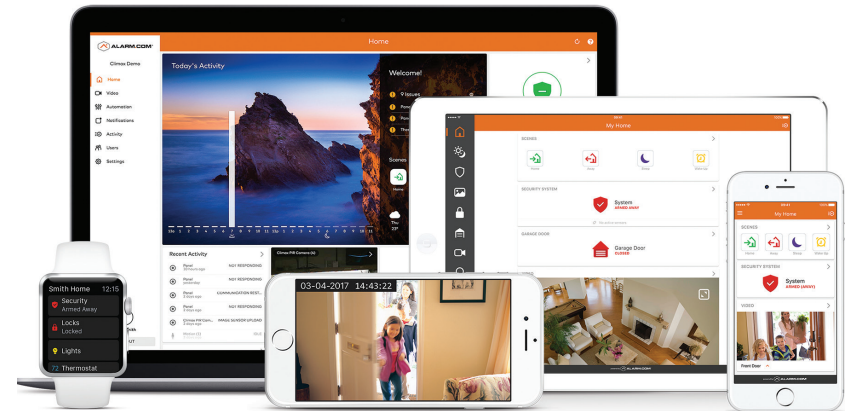
Your Authorized Alarm.com Partner



Getting Started

with Smarter Home Security

powered by  **ALARM.COM**



LOGIN INFORMATION

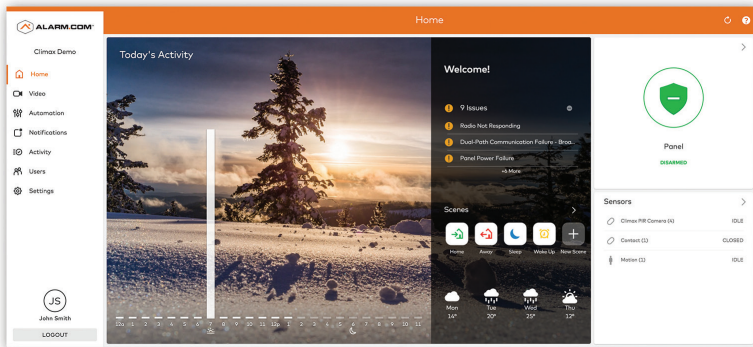
Username: _____

Password: _____

Online Account

1 LOG IN AT www.alarm.com/login

Log in using the username/password provided by your installer to manage and view your system from the Homepage.



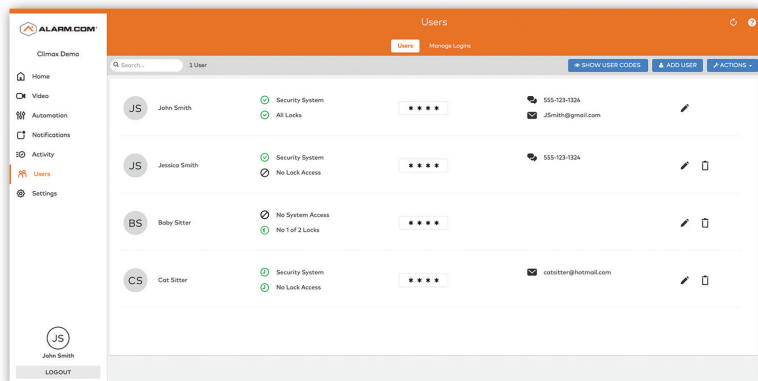
2 SET UP USER CODES

Set up user codes for your family members, friends, dog walker, nanny or anyone who has access to arm/disarm your panel.

Users > Add New User

Also assign user-specific access, permanent or temporary, to selected access points (security system, locks, etc.) for a specific date and time range.

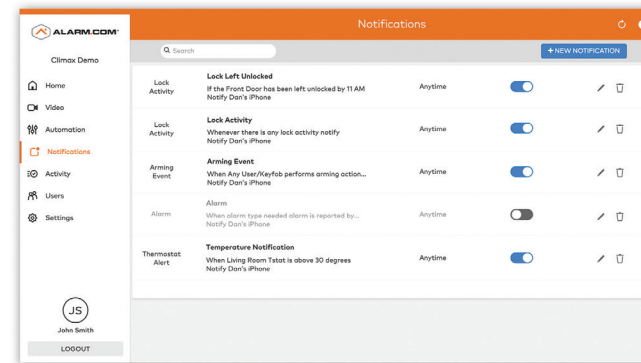
Users > Actions > Add Temporary User



3 CONFIGURE NOTIFICATIONS

Receive real-time alerts (text, email or push) due to a system occurrence, such as the system reporting an alarm, if someone forgets to arm the system, or if a door is left open. You can also add and manage notifications from the Alarm.com Mobile App.

Notifications > + New Notification > Select default or customise your own > + Add Recipient > Save Notification



4 ENABLE GEO-SERVICES

Create Geo-Fences to enable location-based rules and alerts that automatically adjust your home's settings. Geo-Services uses the location of your smartphone to detect when you're leaving or approaching your home. You must first enable location services in the Mobile App before configuring Geo-Services on the Alarm.com website.

Settings > Geo-Services > + Add a Fence > Position the pin to the desired area

