

G. B. PERFIN STUDY GROUP

NEWS-LETTER

No. 45 June 1963

Subscription 10/- per annum.

PRESIDENT: C.Jennings, Esq.,  
SEC/EDITOR: R.Bowman, Esq.,  
PACKET.SUP: J.Rucklidge, Esq.,  
LIBRARIAN: G. Holden, Esq.,  
EDITOR: V. Terry, Esq.,  
CAT.EDITOR: B.C.Tomkins, Esq.,

New Member. No. 74, J.B. Gay,

Lapsed Membership. No. 50, I.C.G. Campbell

-----

We have heard that our President has not been too well and was taken into hospital for a spell and in consequence all correspondence and work will be delayed by 7 or 8 weeks, so please bear with Mr. Jennings at this time.

I am sure I am penning all your thoughts and wishes when I say, "Mr. Jennings please hurry and get back to full health and working strength for your own and everyone else's sake."

—

NEWS ITEMS

It was good to hear recently that Mr. Tomkins our Catalogue Editor gave a display of Perfins to the Wisbeck (Cambs) Philatelic Society which was well received and resulted in the new member Mr. Gay joining our ranks. Many thanks to Mr Tomkins for this effort and many welcomes to Mr. Gay.

If anyone else either gives displays or enters competitions or exhibitions please let us hear from you.

You will no doubt have noted that some of the Group have at last started writing in so it is now up to the rest of you to do likewise how about it ?

Mr. Fetta (No. 38) and Mr. Regnier (No. 26) wrote to us recently and a point they mention raises an interesting question I think.

The Question:- "What does our Group study, 1) All stamps with holes, 2) Just designs denoting firms, councils etc. or 3) Those that suit us. I wonder which ?

The points that made me ask this question are those.

Mr. Fetta writes:

Recently I ran across reference to perfin on early British postal cards; the article said that those perforations were used as a cancelling device - an orb used in London, an arrow in Liverpool, etc. Was this actually a cancelling device: or was it a perfin as understood by the club ? In any case I'd like more information on these and would like to buy examples of the various types known. I'd also like to buy examples of perforated wrappers (used for newspapers, etc.).

The other letter, from\_ Mr. Regnier, answers Mr. Collison's query in the February News Letter, and is this:-

The query by Mr. Collison, it looks' to be not a perfin, but a punched stamp, our own Kodak Co. does that here. We mail in films and the Co. punches the receiving date through the tag, which is returned with the pictures. I have thrown away a lot of these as not true perfins but damaged stamps. I could be wrong in Collison's case.

Thank you Mr. Regnier.

Mr. Carr tells me that he is hoping to arrange another auction when he is settled at a permanent adress in London, so please start sorting your material in readiness. We will all try and ensure that there is sufficient time lapse between the opening and closing dates in future.

DON'T FORGET TO MAKE USE OF YOUR LIBRARY, YOUR EXCHANGE PACKET AND YOUR PENS TO SUPPLY NEWS MATERIALS FOR FUTURE ISSUES PLEASE!!!

'B' INDENTITIES

B	H	9	(5½)	Centre de Cereales, London
B	H	11	(4½)	1 Burge & Co Ltd, London E.C.3 2 Butterworth & Co.Ltd. London 3. J.W. Benson, London, W.1.
B	H	13	(6)	Centro de Cereales, London
B	H	13	(6½)	B.W. Blydenstein & Co., London
B	H	14	(6½)	Centro de Cereales, London
B	H	15	(9½)	Blackie & Son Ltd. Glasgow
B	H	24	(13½)	Joseph Brennan & Sons Ltd. Bradford
BA	H	13,10	(6)	Wm. Brown Atkinson & Co.Ltd. Hull
B.A./C.	2H	13,10/8	(5½)	British Automatic Co.
BASS	H	13,10,10,10	(4½)	)
BASS	H	14,10,10,10	(5)	) Bass, Ratcliff and
BASS	H	15,8,9,9	(4½,3½)	) Gretton Limited
BAT	H	17,16,10	(11½)	British American Tobacco Co. Ltd., London
BB	H	11,11	(4½)	) Baring Brothers & Co.,
BB	H	14,14	(6)	) London
BB	H	14,14	(5½)	Bary Brothers, Liverpool
BB/B	2H	11,11,11	(4½)	Bridlington Borough Council
BBC	2H	14,14,8	(5)	Beeston Boiler Company Beeston, Notts
BB/CF	2H	13,13/8,8	(5½/6)	) Burgoyne Burbidge & Co.Ltd,
BB/CF	2H	13,13/8,8	(4½)	) (Chemists Friend)
BB/CF	2H	15,15/9,8	(5½)	) London E.8
B.B/Co	2H	15,15/16,10,8	(5/5½)II	Baker, Baker & Co. Bristol
BB/E	2H	14,14/10	(5)	Bargue Belge Pour L'Etrange London.
B.B./H.	2H	13,13/15	(6)	Baretein Brothers Ltd.Manchester
BBK	H	11,11,9	(4½)	)
BBK	S	13,13,9	(4½)	)
B/BK	2H	11/11,9	(4½)	) Barclays Bank Limited
B/BK	2H	14/14,9	(5½)	)
BB/L	2H	11,11/5	(4½)	Bradstreet's British Ltd. London, E.C.4.
B.B/Ld	2H	13,13/7,7	(5½)	Brown Brothers (Aircraft) Ltd. London, E.C.3.
BB/MCo	2H	14,14/15,8,4	(5)	The Birmingham Battery and
BB/MCo	2H	11,11/11,7,4	(4½)	Metal Co. Ltd., Birmingham
B.B/STE	2H	11,11/9,6,9	(4½)	Borough of Bury St. Edmunds Suffolk.

BC	H	11,7	(4½)	Borough of Camberwell, London
Also used by the Corporations of:-				Bacup (Yorks) Bexhill-on-Sea
				(Sussex) Blackburn (Lancs)
				Blackpool (Lancs) Barking (Essex)
				Bexley (Kent) Bebington (Yorks)
				Brighouse (Yorks) Bradford (Yorks)
				Brighton (Sussex) and Bristol.
BC	H	12,9	(4½)	Batley Corporation, Yorkshire
BC	H	13,8	(5½)	1)Blackpool Corporation
				2)Burnley Corporation
BC	H	14,10	(7)	Birkenhead Corporation
BC	H	15,8	(5½)	Blackpool Corporation
B.C.	H	12,10	(8½)	Blackpool Corporation
B.C.	S	13,8	(6)	Barrow in Furness Corporation
B.C.	H	11,7	(4½)	County Borouhh of Barrow in Furness
B/C	2H	11/7	(4½)	West of England Bacon Company
BC/BC	2H	14,8/14,8	(5½)	Bury County Borough Corporation
B.C.C.	H	14,8,8	(6)	Bath City Corporation
B/CC	2H	11/7,7	(4½)	Berkshire County Council
BC/Ld	2H	14,8/7,7	(5)	Borax Consolidated Ltd, London EC2
B/Co	2H	11/12,7,4	(4½)	1)Victor Blagden & Co.Ltd. Lon.EC2
				2)Burrell & Co. London E.14
				3)Brickwoods & Co. Portsmouth
				4)Batger & Co. Ltd. London, E.1
B&Co..	H	14,16,8,4	(5)	Boring & Co.Ltd. London W.C.2
B/&Co	3H	15/14/8,8	(5/5/4½)	H.H. & S. Budgett & Co.Ltd. Bristol
BCo/M	2H	11,7,4/11	(4½)	Baxendale & Co.Ltd. Manchester
BCS	H	11,7,9	(4½)	Burnley Co-operation Society
BCS	H	13,8,11	(5½)	Blyth Co-operative Society Ltd.
				Northumberland
BCS/Ld	2H	11,7,9/5,6	(4½)	Birmingham Co-operative Society
				Limited
BC/Y	2H	14,8/8	(5)	Bradford Corporation, Yorkshire
BD	H	11,9	(4½)	Brooker Dore & Co.Ltd. London EC3
BDC	H	11,9,7	(4½)	Basildon Development Corp. Essex
BD/CS	2H	11,9/7,9	(5)	Bury District Co-operative Society
				Lancs.
B/D/H	3H	12/8/9	(4½)	) The British Drug Houses Ltd.
B/D/H	3H	11/9/10	(4½)	) London, W.1.
B.D/ER	2H	13,11/13,12	(5½) III	Barry Docks & Railway Company

BE	H	13,10	(5)		British Engine Boiler & Electrical Insurance Co.
B.E.	H	13,10	(5½)		British Empire Exhibition 1924-25 Wembley
BE/A	2H	11,9/8	(4½)		The British Engineers Association London, S. W. 1.
BE/L	2H	15,10,18	(5½)		Benjamin Electric Co. Ltd. London.
BFC	H	13,8,3	(4½)		The Beeston Foundry Co. Ltd. Beeston, Notts.
B&F/L	2H	11,12,7/6	(4½)	Ia	Barclay & Fry (Printers) London.
BG	H	11,9	(4½)		Borough of :- Greenwich, Gateshead, Bethnal Green (London E.2) and Guildford (Surrey)
B.G.C	H	14,10,8	(5)		Bradford Gas Co., Bradford, Yorks.
B.G/Co	2H	14,10/8,4	(5)		Budenberg Gauge Co. Ltd., Manchester
BG/IC	2H	11,9/4,7	(4½)		British General Insurance Company.
BH	H	11,10	(4½)	_	Brompton Hospital, London, S.W.3.
B/H	2H	15/11	(5½)		Bourne & Hollingsworth Limited, London; W.1.
B&H	H	11,12,10	(4½)	Ia	1) Buck & Hicknan Ltd., London, E.1 2) Boosey & Hawkes Ltd. London.
B&H	H	13,13,11	(5½)	III	Bourne & Hollingsworth Limited, London, W.1.
BH/C	2H	11,10/7	(4½)		Burnley Hospitals Committee
B/HMC	2H	11/10,11,7	(4½)		Bow Group Hospital Management Committee, London, E.3.
BH/UDC	2H	11,10/8,9,7	(4½)		Brierly Hill Urban District Council, Worcester.
BIRK/BECK	S	12,4,11,9/12,9,8,9		)	Birbeck Bank Limited,
BIRK/BECK	2H	13,5,12,10/13,10,9,10		)	London
BJ/CoLd	2H	10,6/7,4,6,6	(4½)		Brown Jenkins & Co. Ltd., London EC3
B&J/M	2H	14,14,7/15	(5)	III )	Barlow and Jones Limited,
B&J/M	2H	11,12,6/11	(4½)	Ia )	Manchester.
BLA/KEY	2H	13,7,10/10,10,7	(5½)		Blakey's Boot Protectors Ltd., London.
BL/Co	2H	11,6/7,4	(4½)		Dexter's Leather Co. Limited, London, E.C.2.
B.L/&Co.	2H	13,7/13,8,6	(5½)	III	Baylis Lewis & Company.
BL/HMC	2H	11,6/10,11,7	(4½)		Brighton & Lewes Hospital Management Committee.
BL/W	2H	11,6/12	(4½)		Burgess, Ledward Co. Ltd. Manchester
B.M.	S	13,15	(6)		Bank of Montreal, London.
B/MA	2H	14/15,11	(5)		British Medical Ass. London, W.C.1.

B.M/C.°.	S	13,15/8,6	(5½/6)		Bradford Manufacturing Co. Bradford, Yorks.
B.M/&Co.	2H	13,17/12,8,6	(4½)		Brunner Mond & Co., Northwich
BME	H	13,15,10	(5½)		Brit. Metal Engraving Co. Ltd, Twickenham, Middlesex.
BM/I	2H	11,11/4	(4½)		British Merchants Incorporated Ltd. London.
B&M/Ld	2H	11,12,11/6,6	(4½)		Bryant and May Ltd., London.
BM/P	2H	11,11/8	(4½)		British Mexican Petroleum. Co. Ltd., London, E.C.3.
BM/R	2H	13,15/12	(5½)		Breson & Merthyr Railway
BNCR	H	13,13,8,11	(4)		Belfast & Northern Counties Railway
B/N	2H	11/11	(4½)		British Northern Shipping Agency Ltd; , London, E.C.3.
BN/&H	2H	14,13/14,12	(4½)	III	Borough, Nicholson & Hall Ltd.
BN/&H	2H	14,13/14,12	(5)	III	Leek, Staffs.
BN/SA	2H	11,11/9,8	(4½)		Latus Linsley & Co. (London) Ltd. London E.C.3.
		Believed to be:-			British Nylon Spinners Association
B/NU	2H	14/13,10	(5)		Banco National Ultramarino London, E.C.2.
B.N.Z	H	13,13,9	(5)		Bank of New Zealand, London.
B/OF/E	3H	11/8,7/9	(4½/4/4½)		Borough of Enfield, Middlesex.
BOS	H	14,10,10	(5)	)	
B.O.S	H	14,10,10	(4½)	)	Barry, Ostlere and Shepherd,
B.O.S	H	14,10,10	(5)	)	London.
B/O/S	3H	14/10/10	(6)	)	
BP	H	11,8	(5)		Burns Philip & Co. Ltd., London.
B&P	H	11,12,8	(4½)	Ia	Beck & Pollitzer, London, S.E.1
B&P	H	13,13,10	(5½)	III	Brown & Polsen Ltd. Norwich.
BPB	S	14,10,14	(4½)		Burbidge, Pritchard & Bartleet London.
BP/&Co	2H	14,10,10/8,6	(5½)	I	Barclay, Perkins & Co. Ltd., London
BP/D	2H	13,10/11	(5½)	)	Boots Pure Drug Co.
BP/D	2H	15,10/12	(5½)	)	Nottingham
BP/M	2H	15,10/13	(6,5½/5½)		Birmingham Post and Mail
BP/M	2H	11,8/11	(4½)		Bridgend Paper Mills Ltd. Bridgend, Glamorgan.
BQ	H	14,13	(5)		Bernard Quaritch Ltd., London.
BR	H	11,10	(4½)		Boake Roberts & Co. Ltd., Buckhurst Hill, Essex.
B.R	H	14,11	(5)		Barry Railway

BRCo./Ld	2H	13,12,8,6/7,7	(5)	)	The Belfast Ropework Co. Ltd.
BRCo/Ld	2H	13,12,8,5/7,7	(4½)	)	Belfast
BR/DC	2H	11,10/9,7	(4½)		Battle Rural District Council
BS	H	11,9	(4½)		British & Foreign Bible Society London
B&S	S	13,13,11	(5½)	III	Bradford & Sons Ltd., Yeovil
BSA	H	11,9,8	(4½)	)	Birmingham Small Arms
BSA	H	13,10,10	(4½)	)	Company Limited
B&S/Ld	2H	13,12,10/7,6	(4½)	IIIa	Bemrose and Sons Ltd., Derby
BS/HMC	2H	11,9/10,11,7	(4½)		Bermondsey & Southwark Hospital Management Committee London
BSN	H	15,10,13	(5½)	)	Bristol Steam Navigation Co.
BSN	S	14,14,13	(5½)	)	Limited, Bristol.
BS/&N	2H	15,10/14,13	(5)		Beecroft Sons & Nicholson London, W.1.
B/SS	2H	11/9,9	(4½)		The Booth Steamship Co. Ltd., Liverpool.
BSS/Co	2H	14,10,10/8,6	(5)		" " " "
B.T	H	15,8	(5½)		Brown and Tawse Ltd., Dundee
B&T	H	15,14,7	(4½, 4, 4½)	I	Butler & Tanner Ltd., London
BT/C	2H	13,7/8	(5½)		Burton on Trent Corporation
B.T.H	2H	13/7,11	(5½)	)	British Thompson Houston
B/TH	2H	14/7,12	(5)	)	Company
B/TH	2H	15/7,12	(7)	)	Limited
BW	H	11,12	(4½)	)	Burroughs and Company
B/W	2H	11/12	(4½)	)	London
BW/A	2H	15,13/10	(6)		Bank of British West Africa London, E.C.
BW/A	2H	12,11,7	(6½)		Bank of West Africa
BW/Co	2H	14,17/9,6	(5)		The Britannic Works Co. Ltd., Ilford, Essex.
BW/&Co	2H	13,14/12,8,6	(4½)	IIIa	) Burroughs Wellcome Co. Ltd,
BW/&C°	2H	14,15/14,8,6	(4½)	I	) Dartford, Kent
BX	H	11,9	(4½)		British Xylonite Ltd., London
BX/C	2H	11,9/7	(4½)		Buxton Corporation, Derbyshire.

PERFINS USED BY LOCAL GOVERNMENT OFFICES

Compiled by R. Bowman

INTRODUCTION

The following listing is an attempt to record all the known information on perfins used by Local Government Offices.

As far as possible the listing will be done alphabetically under the name of the main town included in the title of the council, and a few notes on the history, geography etc., of the area will be included.

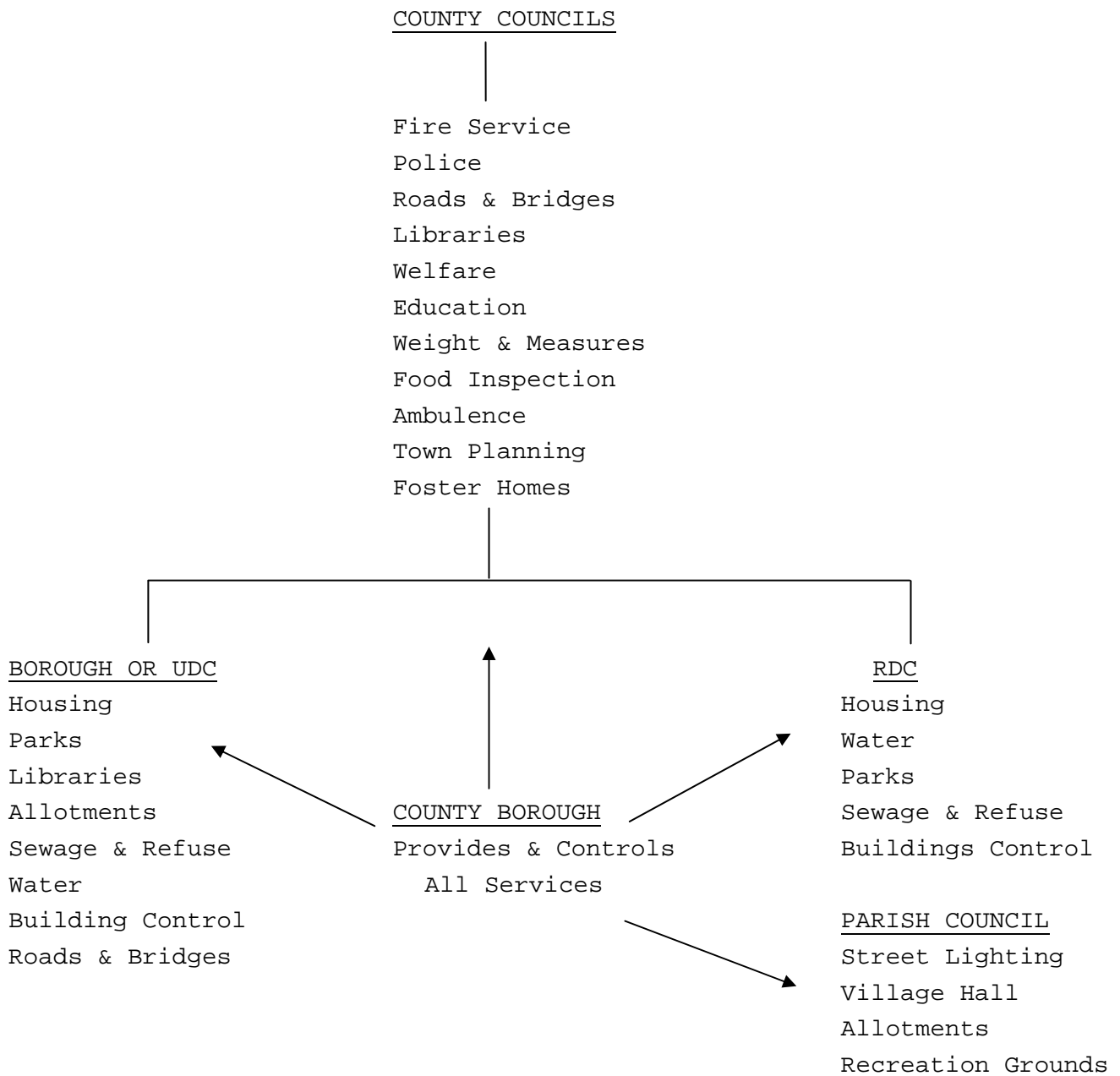
Following the main heading, the status of the council will be given in brackets in accordance with the code below, and following that will be the county in which the town is situated.

STATUS CODE

C	.....	County Council
CB	.....	County Borough Council
B	.....	Borough Council
UDC	.....	Urban District Council
RDC	.....	Rural District Council



MAJOR RESPONSIBILITIES OF COUNCILS



## TYPES OF COUNCIL

### 1) COUNTY COUNCIL

Although Great Britain has been divided into counties or shires for hundreds of years it was not until 1880 that county councils were first set up to manage local affairs.

The members of the council are elected, but only two thirds are elected by the inhabitants of the county. The other third, who are called Aldermen, are elected by the Councillors themselves.

The council controls all the major services in most areas of the country, (see Fig.1), and in addition to the local rates paid by householders, it received grants from the National Government.

### 2) COUNTY BOROUGH

Is a borough which is large enough to control all its own services and has, therefore, the powers of a county and borough together (See Fig. 1)

The composition of the council is identical with that of a county and members are elected in the same manner.

The head of the county borough council has the special title of Mayor, whereas the head of a county council is entitled Chairman.

### 3) BOROUGH COUNCIL

A borough council is a corporation body and its members are elected in a similar manner to those of a county and county borough. Its head also has the title of Mayor.

Boroughs are incorporated by Royal Charter and usually come into being when an Urban District Council which considers itself large enough petitions the Crown.

The borough in greater London are normally termed Municipal Boroughs or Metropolitan Boroughs.

### 4) URBAN DISTRICT COUNCIL

An urban district council usually governs a collection of smallish towns and has all its members elected by the inhabitants. It is responsible for the same services as a borough (See Fig.1) but unlike a borough the head of an Urban District council has the title Chairman, and its members are all Councillors

### 5) RURAL DISTRICT COUNCIL

This council normally governs a number of villages and is usually an area which is sub-divided into Parishes which have their own councils. Thus in the government of a rural district three councils may be involved, the county council, the urban district and parish council.

Members of urban district and parish councils have the same titles and are elected in a similar manner to urban district councils.

1.1 ABERDARE (UDC) GLAMORGAN

Aberdare is a coal mining district in Wales with a population of 41,000 and lies in a picturesque valley through which the river Cynon flows. The origin of the town is uncertain although it is mentioned in a document as early as 1203.

Perfins:	(i)	AU/DC	2H	8,8/9,7	(4½)
	(ii)	A.U/DC	2H	8,7/9,7	(4½)

Perfins have been in use for approximately 30 years and are obtained from Joseph Sloper & Co.

Die (i) is currently used and values are: 2d and 3d only

1.2 ACCRINGTON (B) LANCASHIRE

A pleasant town of approximately 41,000 people situated in the north eastern section of Lancashire close to the Lake District.

The town has varied industries including, Engineering, Coal Mining, Cotton Weaving, Printing and Dyeing.

Perfin:	AC	H	10,7	(5½)
---------	----	---	------	------

How long perfins have been in use is unknown but they are obtained from Slopers.

Current values perforated:- ½d, 1d, 1½d, 2d, 2½d, 3d, 4½d, 6d, 1/-

1.3 ACTON (B) MIDDLESEX

A Municipal Borough in outer London having a population of some 64,800.

Its industries are mainly connected with the motor car and aircraft industries.

Perfin:	AC	H	10,7	(5½)
---------	----	---	------	------

Period of use is unknown but are supplied by Slopers.

Current values: ½d, 1½d, 2d, 2½d, 3d, 4½d, 6d, 1/-

1.4 AIREBOROUGH (UDC)

The present council came into being when in 1937 it incorporated the village of Guiseley, Hawkesworth, Rawdon and Yeadon.

The district has strong links with Ancient Britain, most of the names of the townships being derived from the Celtic EA (Water), DON (a hill) AIRE (Bright)

Present day population is 27,600 with wool being the main industry.

Perfin:	AU/DC	2H	8,7/9,7	(4½)
---------	-------	----	---------	------

Perfins are obtained from Messers Slopers and were first introduced about 1950.

Current values: 1d, 1½d, 2d, 3d, 1/-.

1.5 ASHTON-UNDER-LYNE (B) LANCASHIRE

Ashton-under-Lyne lies six miles east of Manchester and first received its name during Saxon times when it was known as Eshton or Eston from the Ash Trees so revered by Saxons.

Incorporated as a Borough in 1847 it has a present day population of 51,400.

Perfin: AU/LC 2H 8,8/6,7 (4½)

Perfins have been in use for over 20 years and are obtained from Slopers.

Current values:- 1½d, 2d, 2½d, 3d