

The Perfin Society Bulletin

THE SOCIETY'S OFFICERS

PRESIDENT	J. S. Nelson
SECRETARY/ TREASURER/ AUCTIONEER	J.M Rucklidge H. Skinner
BULLETIN ED.	Mrs M.R. Smith
CATALOGUE ED.	W.R. Gault
LIBRARIAN/	Maurice Harp
PUBLICATIONS	John Donner
PACKET SUPT.	Dave Hill

BULLETIN No:- 258 Subscription £4 (UK); £6 (abroad/surface); £7 (abroad/air)

<u>CONTENTS</u>	<u>PAGE</u>
<u>Society Information</u> ;-Cat, of Sloper Prov.; Library Update;	2-4
Membership Changes; Visit to Sloper-Checkpoint Ltd.	5
Members' Queries.	6
<u>Members' Comments On Previous Articles</u> ;- Copestake etc.;	7-8
Additional Curates Society.	14
Sloper Perforating Machines Sold for Purchasers' Own Use.	9-13
(Dave Hill)	
Thames Valley Water - Perfin TWA & TW. (Alan Briggs)	13
Perfins on the British Empire Ex. Stamps. (John Nelson)	15-17
Perfin '34'. (Brian Smith + Rosemary Smith)	16
Deliberate Pin Removal. (Roy Gault)	18-19
New Identities.	20-24
Auction No.3 (1992)	12 Pages.
Library List	8 Pages.
Worksheet (Wembley Stamps)	2 Pages.

SOCIETY INFORMATION

Editorial

I have had a bumper bundle of material sent in over the last two months. Don't tell Michael I've told you but he says we have a good bank balance so I am putting out extra pages. If I wrote to you as a contributor and you" expected your efforts in this issue but it is not there, I have had to reshuffle articles and some have had to be left until next time.

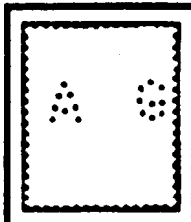
There are quite a few pleas for information this month and I had wondered at the wisdom of putting in too many queries. However, if you are looking for one thing you might as well look for others at the same time. So as soon as it rains and you have to come in from the garden, settle down with your perfins and look to see if you can contribute to the current research.

Catalogue of "Slopers' Wartime Provisionals".

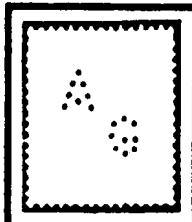
Roy Gault has made a start with this new catalogue. I have seen the introduction and the first section - letter 'A'¹ - and it is a very professional piece of work. The next page shows an example (reduced to A5 size from the original A4) of part of the 'A' section. The idea of the catalogue is to consider in detail the perfins produced by Slopers by strikes from more than one die. Up to three illustrations of actual stamps are given to show the typical positional variations that can be expected. Often, of course, these provisionals are somewhat scarce and known only from a few examples.

When the catalogue is complete Roy expects there to be at least 600 different provisional dies which will mean a catalogue of about 120 pages. For each die there will be included all known details of users, dates, issues etc. together with the Sloper 'manuscript' ledger entries.

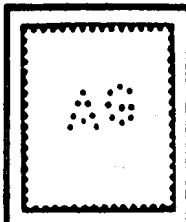
Roy proposes to offer these first nine pages at a special price of 50p, including postage, to allow interested members to examine the pages. This would give Roy some idea of possible demand. Orders should be sent to the Publications Officer, not to Roy.



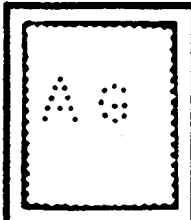
A2460.03p



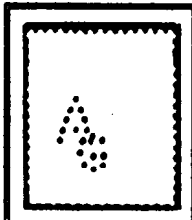
See also A2460.05p (Large A)



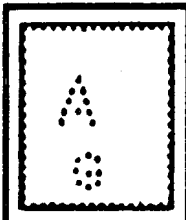
Identity - unknown
 Issue(s) - R 1d, 2½d, 3d
 Postmark/Dates - unknown
 V.Lint - unrecorded Tilles - A246.1a(Prov)
 Sloper m/s ledger entries for AG (1-1)
 1. A F Gagniere & Co.
 2. Alfred Goslet & Co. 3. Graham & Co.



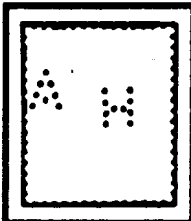
A2460.05p



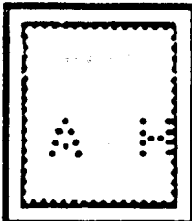
See also A2460.03p (Small A)



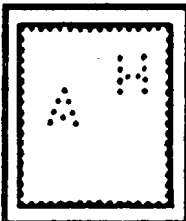
Identity - unknown
 Issue(s) - Q 1d, 6d
 Postmark/Dates - unknown
 V.Lint - 3.7.6 Tilles - unrecorded
 Sloper m/s ledger entries for AG (1-1)
 1. A F Gagniere & Co.
 2. Alfred Goslet & Co. 3. Graham & Co.



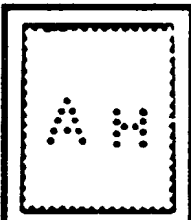
A2710.01ap



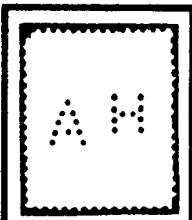
See also A2710.08p (Large A)



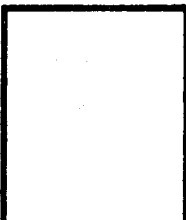
Identity - unknown
 Issue(s) - R 2½d
 Postmark/Dates - unknown
 V.Lint - unrecorded Tilles - A271.1a(Prov)
 Sloper m/s ledger entry for AH (1-1)
 1. Archbishop's House.



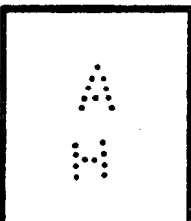
A2710.08p



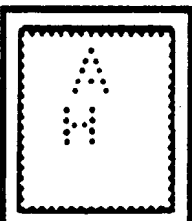
See also A2710.01ap (Small A)



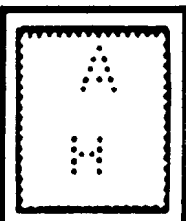
Identity - unknown
 Issue(s) - Q 2½d R 1d
 Postmark/Dates - unknown
 V.Lint - unrecorded Tilles - unrecorded
 Sloper m/s ledger entry for AH (1-1)
 1. Archbishop's House.



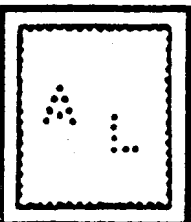
A2745.03p



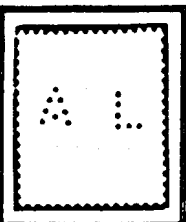
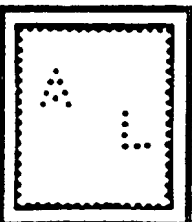
Note - These may be extreme examples of A2710.08p (see above)



Identity - unknown
 Issue(s) - Q 1d, 2½d
 Postmark/Dates - unknown
 V.Lint - unrecorded Tilles - unrecorded
 Sloper m/s ledger - unrecorded



A3510.02ap



Identity - unknown
 Issue(s) - R 2½d, 3d
 Postmark/Dates - unknown
 V.Lint - unrecorded Tilles - A351.2a(Prov)
 Sloper m/s ledger entry for AL (1-1)
 1. Arbuthnot Latham & Co.

Perfin Library Update Maurice Harp.

The Perfin Society Library has now been transferred from sunny Dorset to rainy Walton. Geoff Longbottom our former librarian has made a sterling effort to sort the library out and it is now in a better state than it has been for several years. The next stage is now relatively simple and that is to produce a listing of what is in the library so that the society members know what to ask for.

My plans for the library are three fold:-

- 1) Produce a simplified listing of catalogues, handbooks and journals currently available. (Enclosed with this issue.)
- 2) Produce an overall index for the Perfin Abstracts. The index produced in 1982 covered only about half of the abstracts.
- 3) Restart the regular issue of Perfin Abstracts to produce a complete listing of all articles, handbooks and catalogues.

For the newer members of the society the Perfin Abstracts was issued in 1982 by Brian Birch and contained a comprehensive list of all material in the library at that date. Copies are available still from the publications officer and is highly recommended as a means of finding that elusive article.

An overall index has never been produced but I would hope to have one available in the next few weeks. Later the abstracts will be revived to bring the listing up to date but in the meantime as a stop gap a simplified listing will be produced.

To all members I would urge you to use your library - it's truly amazing what is available. I would also ask any member who may be holding library material to return it so that I can find out exactly what we have.

Perfins on 2d Blues

BURKHART BEER has sent an addition to the 2d Blue listing.

N1400.01 N.F.R/&C° Pl.15 13,8,13/14,8,6 4½mm (III)

This die is a new find since the Tilles catalogue and was first illustrated in Edwards. Does anyone have an identity for this perfin?

MEMBERSHIP CHANGES

New Members

BJARNT K.
BRUNELL B.R.
BURRIDGE A.C.E.

CHEAH S.H.
FREDERICKS MRS.D.L.
GRIER DR.J.P.

KNOL A. H W

MORGAN R.L.

TAYLOR MRS.A.R
VOORENN.J.

Re-instatement

THACKER LOEVE TURNER

Died

SCARBER

* * * * *

Visit to J.Sloper Checkpoint Ltd.

Dave Hill has been in touch with Peter Rooke of J. Sloper Checkpoint Ltd. He has ascertained that there is the chance of a tour round their works at Reading.

Would anyone who is interested in such a visit drop a line to Dave (address on Pg. 1) and he will make arrangements if the numbers make it a viable proposition.

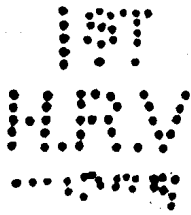
* * * * *

MEMBERS' WANTS

TORD LAGERWALL is wanting an identified cover, trade card, receipt etc from The Skefco Ball Bearing Co. Ltd., London, with perfin 'S' Cat. No. S0010.04. Tord would buy or exchange - contact him direct if you can help.

* * * * *

MEMBERS' QUERIES



The die illustrated is from a ½d EVII, postmark MY 29 06, sent in by DOUGLAS WYLIE. The first two lines are very clear and leave no room for doubt. The bottom line consists of (probably) 5 very small letters, one of which may be an 'O' and the last one definitely is an 'S'. When he tried a comparison with the illustration of H6250.01 in Edwards he found that the match was perfect for the 'H, R & V' and the 'T' matches the leg of the 'L'.

Can anyone solve the mystery?

* * * * *



These two illustrations are from an advertising folder for the Season 1907-08 from The Bell Organ and Piano Co. Ltd. The literature states that the Office and the Factories were at GUELPH, ONTARIO with Branch Warerooms at Toronto, London, 49 Holborn Viaduct, and Sydney N.S.W. The company were makers of "Bell Pianos", "Bell Organs", "The Bellonian Auto-Pneumatic Organ" and "The Bellonian Piano Player".



MICHAEL RUCKLIDGE noticed the similarity between the bell of Design 0010.01 and the bell of Fig.2, which was on the back of the advertising folder. If this rings a bell with anyone (pardon the pun) and you have a cover; more details of the firm or know anything about the perfin, please write directly to Michael.

* * * * *

MEMBERS' COMMENTS ON PREVIOUS ARTICLES

COPESTAKE, HUGHES, CRAMPTON, & CO. Bulletin 257/11

This article has produced quite a few comments. My own comment is that I was incorrect saying that C3195 (Fig.14) was not identified. This is in fact identified as Copestake, Hughes, Crampton & Co.

TONY LLEWELLYN EDWARDS agrees with Roy that the box was not meant to obliterate 'MOORE'. The only proof seems to be the reference in Jennings'. He feels the C3130 (Fig.11) would make a better effort at removing 'MOORE'.

(Editor:- Mike Hemsall in his article in Bulletin 177 made a good case for C3130 being identified with Copestake, Hughes, Crampton, & Co. This has not been picked up in Tomkins but perhaps it has not been accepted.)

DAVID SCOTT notes that the box would have to be a larger rectangle to cover the word 'CRAMPTON' and as his perfin is on a stamp with underprint as Fig.3, the box only covers ..'N & C'

Tony adds that perfin dies C1290.02a (CC/&Co); C1295 (C.C/&Co.); 1300.01 (CC/C^oL^d); and 1380.02 (CC/L) (Poko) which are all identified with this firm should be mentioned. He has also sent photocopies of two commercial overprints used by this firm for their receipt stamps. Fig. 1 is the 1d lilac (circa 1881) with "Copestake & Co./LONDON" at the top and a "£" sign at the bottom. Fig.2 is the 1d EVII with "Received" at the top and "for Copestake & Co/LONDON" at the bottom. My apologies for the lack of clarity of the overprints.



Fig.1



Fig.2

David wonders about the nature of the business of Copestake a Co. Both he and Tony note the 'NPB' cancellations on these stamps. From Mike Hemsall (Bulletin 177) it is obvious that 'out of London' postmarks are prevalent, particularly that of Manchester.

John Nelson, in his article 'SC - The First Perfin' - in Bulletin 234 Page 3, tells us that in 1867 Copestake, Moore, Crampton & Co were "Drapers' Warehousemen". Presumably the 'NPB' cancellations were on orders sent out to small drapers up and down the country and the 'out-of-town' postmarks from their reps. As Manchester was the centre of the cotton trade at that time it is quite feasible that Copestakes either had an office there or, more likely, a permanent buyer for merchandise. I would be grateful if anyone can dig out any solid facts about the history of this firm.

BILL TURNEY (Canada), DAVID SCOTT, IAN BROWN and HARRY SKINNER have confirmed the dual security on the 1d Venetian Red (SG166), 1½d Plate 3 (SG51) and the 2d Blue Plate 15 (SG46) but I have not heard from anyone with a 3d Rose Plate 20 (SG143). Tony Edwards has added another to the list - a 1d lilac Die II, first introduced 12th Dec 1881 but by its' colour Tony thinks it is a much later printing.

Turning to the perfins as Figures 11 to 15 in Bulletin 257, David Scott, Ian Burns and Gary Shayler give the following information:-

Fig.12 is on 3d lilac (SG191) and ½d blue (SG187) - the 3d has a cancel which looks like GPO in a circle.

Fig.15 is on many 1d lilacs with London postmarks 1881 to 1894 and one a Birmingham postmark. A ½d orange Jubilee (SG197) postmark London 7-7-93 and 1½d Jubilee (SG198) cancel 'G.P.O. DEPO'.

Many thanks to everyone who responded and it is not too late to send new information.

* * * *

EXCHANGE:-DAVID ANDERSEN

will send 100 Australian Official perfins on different issues (OS/NSW, OS, G/NSW, VG etc) in exchange for 50 different world revenues (fiscals) with or without perfins OR 30 different GB overprints.

SLOPER PERFORATING MACHINES SOLD for PURCHASERS' OWN USE

From Dave Hill.

I am studying Sloper's records of machines sold - Books 10,11,12, 13 and 16. These were, or could be, used for stamps. Members who can answer any of the queries please write to me, Dave Hill, at my address on Page 1. Compilers of the Foreign Perfin Catalogues should note the information on their perfins otherwise it will go unrecorded. I will send copies of the relevant foreign entries to such specialists upon receipt of a S.A.E. stating your particular country of interest.

The illustrations are not as good as I would have liked them to be but some are on brown card and others on white file cards.

Machine No.65121 (N)

This perfin is not known on stamps, I think. Delivered to McCorquodale & Co Ltd, Glasgow Cl but they were not the users as they asked that Slopers name be omitted from the machine. Perhaps it is known on foreign stamps?

Machine No.65010 (P)

Delivered to the same firm, this appears to be P0010.21, the identity is not known. With what postmarks is it known?

Machine No.65155 (S.C.S)

Delivered to the Co-op in Manchester, S1775.01. Have members postmarked copies which may reveal the Co-op Society, to give us the identity?.

Machine No.65176 (ENIT)

Delivered to the Italian State Tourist Dept., 16 Waterloo Place, Regent Street, London SW1. E3240.01 - a new identity but what do the initials ENIT stand for?

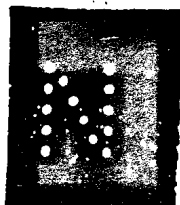
Machine No.65403 (PW/M)

Delivered to Belman & Son Ltd., Birmingham but as Slopers name was omitted they were not the user. Was the user someone in Birmingham? P5170.01 2x3 dies.

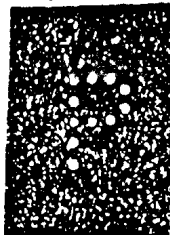
Machine No.65523 (I.N./&/S.Ltd)

Delivered to Knight & Forster, Bradford but not the user. Again was the user someone in Bradford? 11840.01.

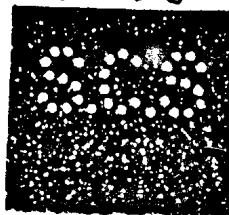
65121



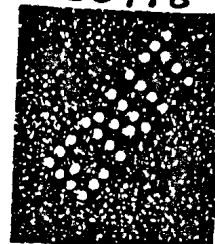
65010



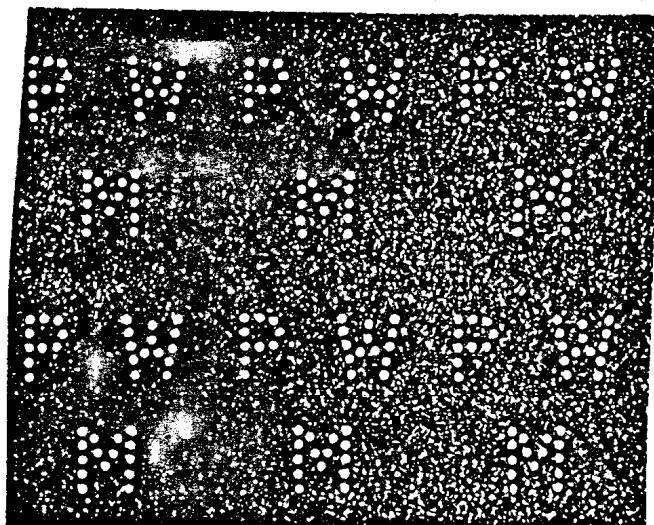
65155



65176



65403



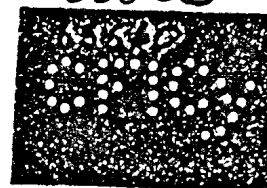
65559



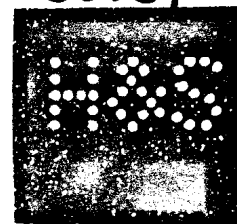
65523



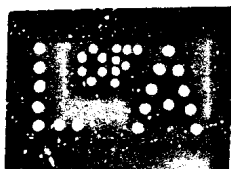
65560



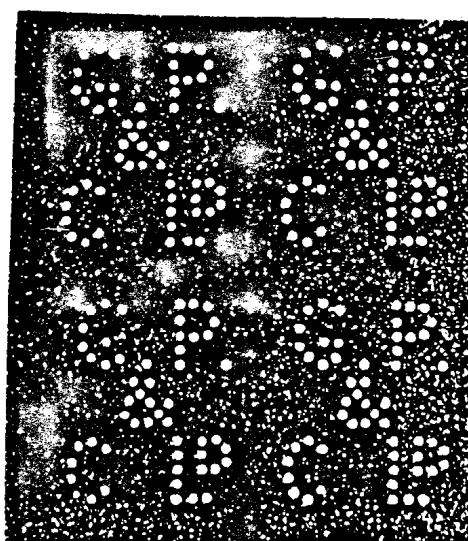
65739



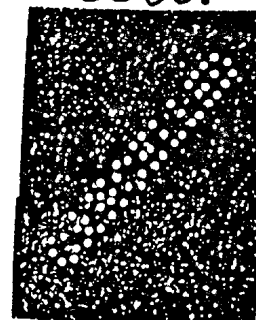
65798



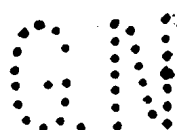
65841



65851



65799



Machine No.65559 & 65560 (HMC & CFICy)

Similar to machine No.63771, I have not got the ledger with this machine. Perfins not known? Delivered to Blythe Green, Jourdain & Co., Export Dept. Are they known on foreign stamps?

Machine No.65739 (H&S)

Delivered to R. Bentzien & Co., Liverpool. H6350.13. Does this provide any clues to the user?

Machine No.65798 (LofA)

Perfin not known on stamps, delivered to League of Audiences, 30 Duke Street, St. James, London SW1. What was it used for?

Machine No.65799 (G.N)

Perfin not known on G.B. stamps, machine is a hand clip usually used for skins - sometimes for documents. Sent to Augusto L. Ortiz c/o Mr. Gilberto Marchena, Galle Ancha, Ostrabanda, Curacao, Dutch West Indies. Is it known on their stamps?

Machine No.65841 (G.P./&/CL^d)

G3960.01 delivered to Geo. Hartley & Sons, Manchester but not the user. Does the postmark evidence confirm the user is the same as G3960.02? 2x2 dies.

Machine No.65851 (CANCELLED)

Not a perfin, delivered to the Crown Agents for St. Lucia. Is it known on their stamps?

Machine No.65946 (EL)

Very similar to E2560.02 which is known as this user but this machine was delivered to Electrolux, Madrid for Spanish stamps. Is it known on Spanish stamps?

Machine No.66510 (E./S.C.)

Perfin not known, delivered to Davis & Soper Ltd., EC3. Is it known on foreign stamps? 2x2 dies.

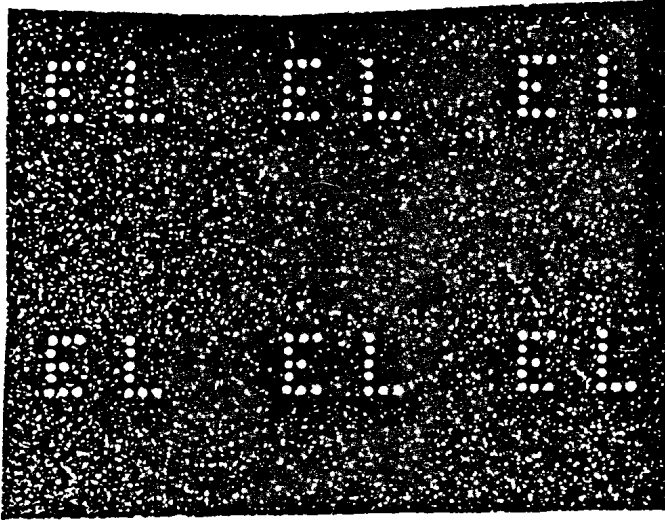
Machine No.66572 (LH)

L2760.02 delivered to Messageries Hachette, 3 La Belle Sauvage Yard, Ludgate Hill, London EC4. New identity. Does the LH stand for Ludgate Hill? Does anyone know anything about the firm - did they have other offices? 2 dies.

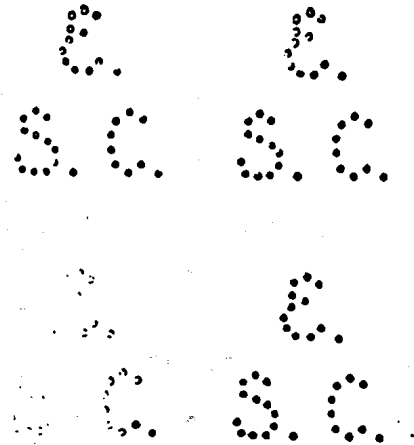
Machine No. 66610 (HB/&C)

Not H0530.02b. Delivered to Wood & Palmer, London EC4 but not user. Known on foreign stamps?

65946



66510



66572



66610



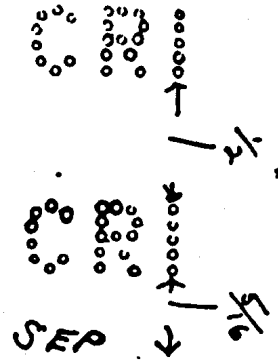
66613



66717



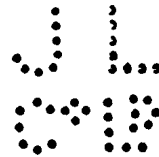
66658



66736



66739



Machine No.66613 (CR/I)

Delivered to G.Hendrick, 45 Rue Washington, Bruxelles. Known on Belgian stamps?

Machine No.66717 (0)

Delivered to Donegal County Council for insurance stamps. Is it known on postage stamps? 10 dies.

Machine No.66658 (CRI)

Delivered as 66613 - is it known on Belgian stamps? 2 dies.

Machine No.66736 (CS)

Not C6760.02. Delivered to Win. Blackwood & Sons Ltd., Edinburgh. Known on foreign stamps? 2x3 dies.

Machine No.66739 (JL/C°L^d)

Delivered to J.Lyons s Co.Ltd., London W. Not intended for stamps. 4 dies.

THAMES VALLEY WATER AUTHORITY PERFIN "TWA" AND "TW" Alan Briggs.

Whilst soaking off some Machins on piece, as I peeled away what I thought were 3 x TWA perfined stamps on the one piece, two 1p and one 20p black (SG1469), I saw that only the 1p stamps were TWA, the 20p being perfined TW only. There was no identity or postmark on the piece and I presumed that they were Thames Water Authority.

A further 20p black (SGX959) has also been found with TW only. In both cases the holes in the TW match exactly with those in the TW of TWA: almost as if the A pin had been removed.

Checking through recent Bulletins I find that in No.247 (Aug.'99 Page 19) Michael Rucklidge had confirmed at Sloper's Works the existence of this TW perfin now catalogued as T4910.02. It would seem that stocks of 1p stamps perfined with the original TWA die had been used along with 20p stamps perfined with the new die to make up the new Postal Rate of 22p effective from 15-9-90.

From Ed.

It is a great pity the stamps were soaked from the piece even though there was no identity, postmark or date. At least it shows the two dies were used by the same user. From memory the only similar item I have is a 13p Machin NR/BR (N2730.02) and a 1p

Machin NR (N2710.06) on one piece. Having an identified cover for Norton, Rose, Botterell & Roche with perfin 2730.02 I safely identified 2710.06 with the same firm - albeit after some parting, of the ways of the former partners.

It would be interesting to find out if other members have different dies used by the same firm on the one envelope or piece. (Not a collection of illegally used perfins) Do please write in if you have other examples.

"ADDITIONAL CURATES SOCIETY" Bulletin 256/12.

Diagonal "A/C/S" Perfin (A1460)

From DAVID SCOTT:- "The Additional Curates Society was founded in about 1839, and was established in order to raise money through commercial enterprises, to pay for curates in Church of England parishes who could not otherwise afford them. In the early years I am told that profits were made from importing tea, but now their principal activity is printing. Their income is derived from their printing presses which until recent weeks (April 1992) were in Washwood Heath, Birmingham, but have now moved on to the Fort Dunlop estate in Birmingham. Until very recently they printed the monthly community newspaper for Mosley. I think the administrative office is in London".

MIKE BAVIN sent this photocopy from "Additions-Corrections for THE CLERGY LIST 1900". He also notes that in 1906 the address of the Additional Curates Society was Great Smith St., London SW. This confirms my belief that someone will find an answer to our questions.

Presented by the Committee of the Additional Curates Society to their late Assistant Secretary.

REGISTRY FOR CURATES,

**Curacies, Temporary Duty, and Titles
for Holy Orders.**

RELIABLE SUNDAY HELP PROVIDED ON APPLICATION.

ARUNDEL HOUSE, VICTORIA EMBANKMENT, W.C.

Open Daily, 10 to 4. (Except Mondays.)

Saturdays, 10 to 1.

Subscription (3 months), 1s.

A Small Fee due when an Engagement is formed.

Address:—

Rev. R. MACKRELL, M.A., Registrar.

PERFINS ON THE COMMEMORATIVE STAMPS OF THE 1924 and 1925
BRITISH EMPIRE EXHIBITION

John Nelson.

I have recently had brought to my notice a short section on perfins which is to be found in 'The Lion Roars at Wembley' by Donald R. Knight and Alan D. Sabey. The subject of the book is the 1924 and 1925 British Empire Exhibition and in it the authors focus much attention on the special stamps which were issued to commemorate the Exhibition.

These were the 1d scarlet and 1½d brown bearing the date 1924, issued on 23rd April 1924 and which were reissued on 9th May 1925 with the year date on the printing dies changed to 1925. The stamps were withdrawn from sale on 19th December 1925 by which time almost the whole printing order of 17 million stamps had been sold.

The following is an extract from the book of the section relative to perfins:-

" Perfins (Security initials of firms)

A number of firms decided to use the special stamps and had their initials perforated into the stamps for security purposes. The following have been identified but there are probably others :-

A B C	Aerated Bread Company
A C F/&Co	A.C. Fincken and Co. Ltd., Watford
C B	Coope Brothers
F.P.	Frederick Penberthy
F.G.	Frank Godden Ltd.
H W/L	H. Williamson, London
J D W/M	J.D. Williams & Co. (Wholesalers), Manchester
J S/& Co	James Simpson and Co. Ltd. Grosvenor Road, London
M W/Co	Marconi Wireless Company
M W & C	Mappin Webb and Company
P.B.L.	Scottish Provident Institution Mutual Assurance
S & B/Ld	The Wall Papers Manufacturers Ltd. Smith Brothers, Leeds or Spillers and Bakers Ltd.
W & S	Waterlow and Sons also Wilkins and Sons Ltd., Tiptree, .Essex

Perfins seen but not identified

DM D.S. GLC K&C M&S S&W SML “

It seems to me that although this listing has several apparent shortcomings it is a most useful foundation on which, with the assistance of members of the Society, a more comprehensive and updated review could be compiled. It is hardly for me to suggest this as an exercise that might be undertaken by someone else (perhaps one with more specialist knowledge than I of the perfins of the KGV period) so with the approval of the Editor I am having a go at it myself.

Accompanying this Bulletin is a survey form which you are invited to complete. What I have done is to list the twenty perfins mentioned in the book, leaving some space at the end for you to add any dies not included. If there is not enough room for all your new ones, please put these on a separate sheet using the same column format.

On your survey form please make any corrections to the first column particularly as to the addition or deletion of stops. In the second column you should insert the die number which appears in the Society's Illustrated Catalogue or a specification in the form utilised in the Tomkins Catalogue. Tick in the appropriate centre boxes the stamps bearing each die which you possess or positively know to exist.

The last column is for further information, if any, such as postmark details and identities. Only include identities which you can personally verify and not those you have taken from the Society's lists or have copied from other sources.

Even if you only have one example of a Wembley perfin do please send me your completed survey form. There is no need to write a covering letter. All information will be collated for future publication but returns will not be acknowledged unless you so request or either of us should wish to raise any query

* * * * *

PERFIN "34" Rosemary Smith

In the June '89 Bulletin (No.240) I identified a new die 34 (Num.0270.04) used by Sheppy Glue A Chemical Works Ltd., Mark Lane, London E.C.3. BRIAN SMITH has sent a very interesting photocopy relating to this company. The item is a pictorial advertising postcard (with perfin) showing one aspect of the Glue & Chemical Works. The subsidiary is called 'The Bone Crushing Company Ltd' and Brian points out that not only do they use the number in their address for the perfin but they named one of their products after the road - Fed on "MARK LANE" Cakes - Supplied only by The Bone Crushing Company Ltd

* * * * *

POST CARD.



34 Mark Lane,
London, E.C.

Dear Sir,

We thank you very much for your order, which we put in hand at once. We hope for further instructions from you soon, and are.

Yours truly,

The Bone Crushing Company,
Limited.

Mr. D. Williams,

Upper Lye,

Aymestrey,

Hereford.



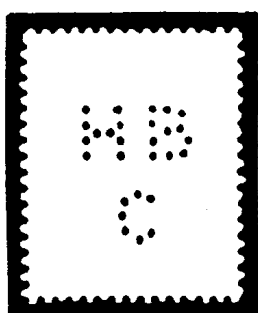
Feed on "Mark Lane" Cakes

Supplied only by The Bone Crushing Company Ltd

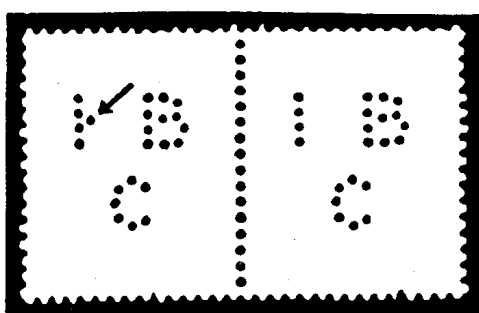
DELIBERATE PIN REMOVAL – THE ONES THAT GOT AWAY! Roy Gault

The removal of pins from a perforating head is a cheap way of producing a 'new' perfin from an old die. On occasions only *some* of the pins were removed to form the new pattern. This was the case when the Cadbury Brothers perfin C.B/B (C0530.01) was modified to become an unsightly C.S/B (C6835.01) on the formation of Cadbury Schweppes. On other occasions *all* the pins forming a particular letter have been removed. Such was the approach adopted when the various Area Health Authorities dropped the word Area from their title, Slopers simply removed the letter 'A' from the perfin dies involved.

Fortunately for us this process of pin removal has not always been carried out with 100% efficiency, in that the odd pin has sometimes been left in and now sticks out like a 'sore thumb'. These occurrences must be quite rare for since becoming catalogue editor in 1989, only three such examples have been brought to my attention. My thanks go to all concerned.

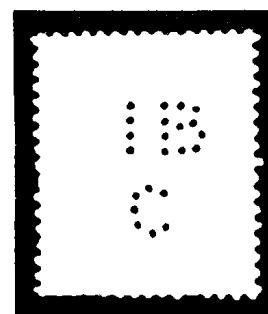


H0470.01A



I0091.01

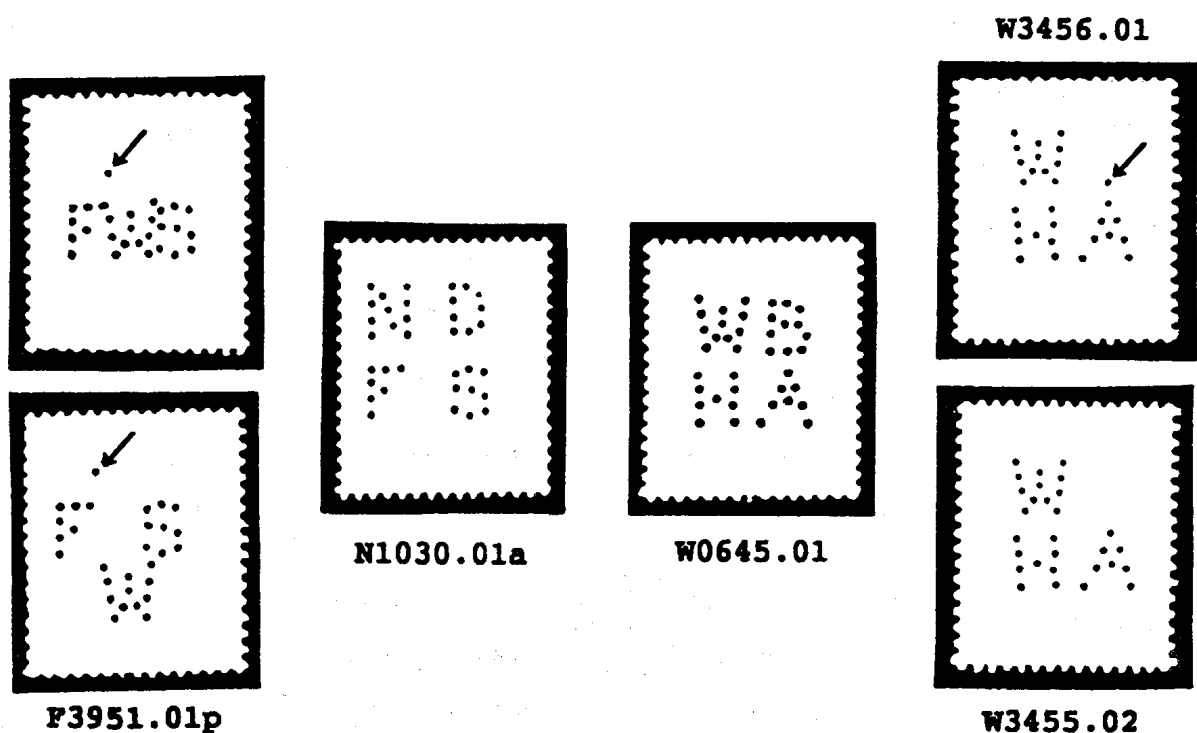
I0090.01



I0090.01a

The first was from Arthur Smith in the form of a delightful pair on GVI dark colour issue. The perfin itself is IB/C (I0090.01), but the extra pin in the left hand perfin gives the game away - it was once HB/C. H0470.01A with the *right* hand portion of the 'H' removed matches Arthur's pair in every detail. Interestingly, the illustration for IB/C (I0090.01a) is also a good match against this HB/C die but with the *left* hand portion of the 'H' removed. As confirmation, the Sloper 'manuscript' ledger has the instructions 'Alter HB/C (a 12 headed die) alongside the IB/C entry for Islington Corporation.

Another example from the wartime 'emergency' period is the known provisional FS/W (F3950.01p). Eric Whitehead and Keith Sears have both reported examples on GVI light colour issues with an extra hole above the F. An exhaustive search through the Illustrated catalogue produced an excellent fit with the perfin ND/FS (renumbered N1030.01a). This time, however, the entry in the Sloper 'manuscript' ledger is not quite so helpful. The instructions '1-1-12' against FS/W (Fore Street Warehouse Co.) have been crossed out, presumably because a better solution had been adopted. After all, one strike from the modified ND/FS die and another for the 'W' would be much quicker than three separate strikes of single letters.



Lastly, a modern example has been reported by John Bonney and Harry Skinner on QEII decimal Machins. Slopers have confirmed that the die WB/HA (W0645.01) used to perfin stamps for the West Birmingham Health Authority was modified by the removal of the 'B' to form W/HA (W3455.02). As in the previous two cases, a pin has been left behind producing another nice perfin variety.

I would be pleased to hear from anyone who can add more details regarding issues, dates etc. or even better, further examples.

NEW IDENTITIES submitted to the CATALOGUE EDITOR. Roy Gault

B0010.33	B	15	5½	Barclay & Son, Manufacturers of Wax Sperm & other Candles & Oil Merchants, ... South Audley St., late Regent St., London.	B
C5930.04	CP/&C ^o	8,10/14,8,4	4½ I	Carter Page & Co. (Seeds, plants etc), London Wall, London E.C.	H
J2710.01	J.F/B	7,8/14	5	Joseph Fordred, Millinery, Ladies Tailor etc., Birmingham.	F.
J5030.04	JL/&S	7,7/12,10	4½ IIIa	John Lupton & Son, Wine & Spirit Merchants and Wholesale Bottlers, Cheapside, Bradford (Leeds & Leith).	F.
<u>L0020.01b</u>	LA	6,6	4½	Law Accident Insurance Soc. Ltd. 63 Broadway, Stratford E15.	R
P3350.01	P.N.B	11,14,15	5½	Patent Nut 4 Bolt Co., B'ham.	B.F.
S7090.01	S&T	11,13,7	5½ III	Shelton & Tibbitts, Printers & Stationers, High St., Ely, Cambs.	E.
T1050.01	T&C ^o /L	7,14,8,4/7	5 I	Towers & Co. Ltd., West Smithfield, London E.C.	I.
14120.01	TS/&C ^o	7,10/12,8,6	4½ IIIa	Thomas Salt & Co. Ltd., Burton-on-Trent.	I.
<u>From Tord Laerwall</u>					
L1430.01	AC/S	10.8/10	5	Alex Cowan S Sons Ltd., 24/25 Upper Thames St., London EC4	I.
A2607.01	AG/P	10,10/10	5	Anglo-Guinea Produce Co. Ltd., 33 & 35 Eastcheap, London EC3.	I.
A3210.02	AJ/&C ^o	10,7/12,8,6	4½ IIIa	2. Adolph Jacobs & Co. Ltd., Bradford.	I.
A4600.01	APM	10,10,5	4	Charles Morgan & Co. Ltd., (Allied Paper Makers), London.	I.
B0010.60	B	18	10	Becker & Co. Ltd., 64 Cannon St., London EC.	I.
B0180.01	B.A/&C ^o .	13,10/12,8,6	4½ IIIa	Wm. Brown, Atkinson & Co., Hull.	E.
B1285.01	BCC/L ^{td}	15,8,8/7,5,7	5½/4½	Broomhill Coal Co. Ltd., Newcastle-on-Tyne.	E.
B1410.01	BC/L ^d	12,8/7,7	4½	Barrus & Cullen Ltd., 35, 36, 37 Upper Thames St., London EC4.	I.

Tord Laaerwall continued

C4810.02ap	CM	7,11	4½	Charles Morgan & Co. Ltd., Paper Makers, London.	R
C6770.04	C.S	10,12	8	Cherry & Smalldridge Ltd., Seville Works, Dublin. Paper Merchants, Mfg Stationers, Printers, ... Mustard Manufacturers.	F.
D401S.01	D.R	11,12	4½	Dessen, Roll Ltd., 6/8 Lime St. Square, London EC3.	I.
E0770.03	E&C ^o .	10,13.10,6	5½ III	Elkington & Co. Ltd., Birmingham.	I.
E2700.01	E.L/L ^d	10,7/7,6	4½	Edward Lloyd Ltd., Salisbury Court, London EC.	I.
E4430.01	ESS/L ^{td}	10,10,10/7,5,7	5½	Edward Saunders & Son Ltd., London EC.	F.
G4720.01	G&S/L ^{td}	10,14,10/7,5,7	4 I	Greenhalgh & Shaw Ltd., Bolton	M
H0370.07	H.B	11,14	4	Hollway Bros., Jeffrey's Square, St. Mary Ave., London EC.	A
I2360.01	IS/L	5,12/7	5½	Irvin & Sellers, Bootle, L'pool.	E.
J0960.01	JS/S.S	7,13/12,10	4½ IIIa	James Burness & Sons, Leadenhall St., London.	E.
N.B. Alter spelling of J0960.02 to read Burness.					
J4130.01	JIJ/IC ^o .	9,5.9/12.9,6	4½ IIIa	John I. Jacobs & Co. Ltd., St. Helen's Place, London EC3.	M
M5360.01	MS/T	11,9/6	4½	Morreau, Spiegelberg & Thompson I.M.O Ltd., Manchester.	I.M.O
S0010.27	S	11	5½	Joseph Sankey & Sons Ltd.. Bilston.	I.
S0210.02	SAH	10,10,12	4	S A Hart, Steamship Broker, Palmeston Buildings, London EC;	E.
(Printed Hart. Ulander & Co., Leadenhall St., London EC handstamped over).					
W6000.01	W..P/L ^{td} ..	15,10/7,5,8	6	Waxed-Papers Ltd., Nunhead, London SE15.	I.
W6290.01	W.R/&Co.	15,13/14,10,6	5 III	Wigham Richardson & Co.. Iron Ship Builders, Newcastle-on-Tyne.	B.

From Bert Johnson

B0890.01	B.B ^{rs..}	15,15,10,9	4½	Benecke Freres, 62 Bishopgate St., London EC.	A
L1190.03	L/&C ^o	7/14,8,4	4½	Latham & Co. Ltd., Tue Brook, Liverpool.	I.

From Eric Whitehead

B1965.01	BD/C	13,11/7	5½	I.C.I (Dyestuffs) Ltd., Huddersfield.	Q
B4930.01	B&M/L ^{td}	13,12,15/7,5,7	4½ IIIa	Bryant & May Ltd.	F.
B6010.01	BQ	14,13	5	Bernard QUARITCH Ltd., Bookseller I. 11 Grafton St., New Bond St., W1.	
C7980.01	CURRIE	8,10,11,11,5,10	4½	James Currie & Co., (Managers), The Leith Hull & Hamburg Steam Packet Co. Ltd.	F.
F1300.01	F.E.G	8,10,10	4½	Ø F E Gaddum, Manchester.	A
M0010.49	M	13	12½	Legge & Miller, Solicitors, Houghton-le-Spring.	F.
M5560.01	MT	15,7	4½	M Thalmessinger & Co., Stock & Share Brokers, 10 S 11 Austin Friars, London EC.	P.
T1016.02	T&Co.	7,13,8,8	5½ III	Turner & Co., 6 Dale St., Liverpool.	B.

From Roy Gault

B4740.01p	B/M	11/11	4½	British Merchants Inc. Ltd., 32 Lime St., London EC3	R.
C0580.01p	C/BC	7/11,7	4½	Borough Treasurer, Guildhall, Cambridge.	R.
E0310.02p	E/BC	9/11,7	4½	Borough of Edmonton, N9.	R.
E1730.02p	E/G	9/9	4½	Evans, Gadd & Co. Ltd., Exeter.	R.
S2040.01p	S/D	9/9	4½	S & L Deyong Ltd.	R

From Dave Hill

G0360.01a	GB	9,11	4½	2. Grimshaw, Baxter and J.J. Elliott Ltd., 29/37 Goswell Rd., London EC1.	R.
L0030.01	L&A	7,14,10	5 III	Lawn & Alder Ltd., Merchants & Colonial Agents, Cross St. and Kirby St., Hatton Garden, London.	I.
L4320.01	LOP	6,8,8	4½	Lubricating Oil Pool, 178 Bothwell St., Glasgow.	R.

From Peter Wood

B5630.04	B&P	14,14,10	5 I	Beck & Pollitzer, Universal House, London SE1.	
----------	-----	----------	-----	---	--

From Stephen Steere

R1350.01 R/DC 10/9,7 4½ Ø Rother BC (Bexhill Pmks)

The following new identities and confirmations are from Stephen Steere and have been taken from Sloper's Official Ledgers. The number(s) in brackets is the number of dies in the perforating head - (m x n) indicating n rows of m dies each.

A0010.02M	A	8	4½	3. Asprey & Co. Ltd.	(12x1)
				4. Askeys Premier Biscuit Co. Ltd.	
A0010.03	A	8	4½	Asprey & Co. Ltd. (Roll die)	(---)
A0410.06	AB	8,11	4½	Allison Bros. Ltd.	(1)
A0760.01	AB/L ^{td}	8,11/6,5,6	4½	2. Arthur Bray Ltd.	(1)
A1010.05M	AC	10,7	5½	3. Abingdon Corporation.	(12x1)
A1215.01	AC/L ^{td}	8,7/6,5,6	4½	Associated Carways Ltd.	(---)
A1300.03	A/&C ^o	8/12.7,5	4½ Ia	1. S Allcock & Co. Ltd.	(1)
				2. Wm. Angus & Co. Ltd.	
A1420.01	ACS	8,7.9	4½	Addlestone & District Industrial Co-operative Society Ltd.	(1)
A1610.01	AD	8,9	4½	2. Amalgamated Dairies	(1)
A1820.01	AD/WB	8,9/13,11	4½	Accrington Water Board	(1)
A1990.03	AEC	8,9,7	4½	Associated Equipment Co. Ltd.	(1)
A1990.06	AEC	8,9,7	4½	American Express Co. Ltd.	(1)
A2060.01	AE/E	8,9/9	4½	A E Evans & Co. Ltd.	(1)
A2350.01	AF/PL	8,7/8,6	4½	Acme Flooring Co. Ltd.	(1)
A2460.01aM	AG	8,9	4½	A Gagniere & Co. Ltd.	(12x1)
A2745.02	A/H	7/10	4½	Archbishops House (Roll die)	(1)
A2829.01	AHF	8,10,7	4½	A H Fuller Ltd.	(---)
A3540.01	A/L	8/6	4½	2. Arbuthnot Latham & Co. Ltd.	(1)
A3660.01	ALM	8,6,11	4½	Assoc'd Lead Mfrs. Ltd (London)	(---)
A3695.01	A/L/M	8/6/11	4½	Assoc'd Lead Mfrs. Ltd (Rolls)	(---)
A3870.01	AM/C	8,11/7	4½	Associated Manufacturers Ltd.	(1)
A4330.02	AOA	8,8,8	4½	A O Aldwinckle & Co. Ltd.	(1)
A4460.02a	AP	8,8	4½	Anglo Portuguese Bank Ltd.	(---)
A4460.02M	AP	8,8	4½	3. Amalgamated Press Ltd.	(12x1)
A4460.04M	AP	8,8	4½	1. Associated Press of GB	(12x1)
				2. Appollinaris Co. Ltd.	
				3. Anglo Portuguese Bank Ltd.	
A4590.01	AP/L ^d	8,8/6,6	4½	Automobile Palace	(1)
A4728.01	AR/B	8,10/11	4½	A R Barton & Co.	

(1)
A5000.01a ASC 8,9,7 4½ Albion Sugar Co. Ltd. (1)

A5350.01a	ATC	8,6,75,4½,4½		1. A T Chown & Co. Ltd	(1)
				2. Alliance Trading Co.	
A5540.03bM	AU/DC	8,8/9,7	4½	1. Aberdare UDC	(12x1)
				2. Aireborough UDC	
A55S0.01aM	AU/LC	8,8/6,7	4½	Ashton under Lyne Corpn.	(12x1)
B0010.04M	B	11,9	4½	12. Brotherton & Co. Ltd.	(12x1)
				13. Brouchs Ltd.	
				14. Fredk. Boehm Ltd.	
				15. Birt Potter & Hughes Ltd.	
				16. S H Benson Ltd.	
				17. J W Baird & Co. Ltd.	
B0060.01	BA	11,8	4½	2. Boyes & Anger Ltd.	(1)
B0300.01	BAX	11,8,9	4½	Baxters Leather Co. Ltd.	(1)
B0510.01bM	BB/B	11,11/11	4½	Bridlington BC	(12x1)
B0580.01	BB/CL	11,11/7,6	4½	Brook Bond & Co. Ltd.	(1)
B0740.03M	B/B ^k	11/11,9	4½	Barclays Bank Ltd.	(12x1)
B07S0.02M	BB/L	11,11/6	4½	Butterfield Bros. Ltd.	(12x1)

Note: The above die is currently illustrated as B0750.02p - this is to be renumbered B0750.02M in the forthcoming update and a new illustration provided for B0750.02p.

B1110.03AM	BC	11,7	4½	7 A J Burrows Clements Winch & Sons	
				8. Brereton Collieries	

Also Add the following BCs

Camberwell, Brighton County, Brighthouse, Blackpool County, Blackburn County, Bexhill, Bermondsey, and Beckenham.

and the following Corporations

Bristol City & County, Bradford City, Bebington, Bacup, Barnes, and Bangor.

B1170.02M	B/C	11/7	4½	4. Broadway Congregational	
				Friendly Society (Rolls)	(6)
B1180.04	B&C	11,12,74	½ Ia	Brentnall (Cleland Ltd.	(1)
B1220.01	BCC	11,7,7	4½	Buckinghamshire CC	(1)
B1320.01	BC/B	11,7/9	4½	British Central Electrical Co Ltd	(1)
B1380.01	BC/L	11,7/6	4½	Borax Consolidated Ltd.	(1)
B1440.01	BC/M	11,7/11	4½	1. Domewood Park Estates	(1)
				2. British Cork Mills Ltd.	

An answer to one of Stephen's queries on page 7 of Bulletin 257.

<u>C4973.01</u>	CM/CS	7,11/7,9	4½	Central Midlands Co-op Society.	W.
				Modified from GM/CS	C3389.01

THE PERFIN SOCIETY

SURVEY OF PERFINS ON THE COMMEMORATIVE STAMPS OF THE
1924 AND 1925 BRITISH EMPIRE EXHIBITION

Die	Illustrated Cat. No. or Society specification	1924		1925		Pmks., identities and remarks
		1d	1½d	1d	1½d	
ABC						
ACF/&Co						
CB						
DM						
D.S.						
F.G.						
F.P.						
GLC						
HW/L						
JDW/L						
JS/&Co						
K&C						
MW&C						
MW/Co						
M&S						

