

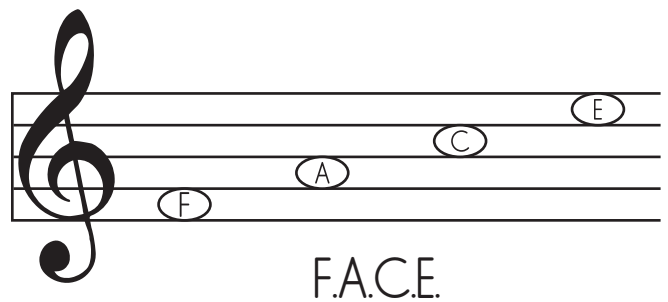
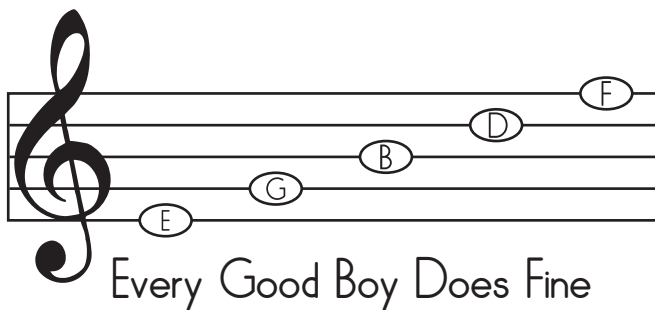
# *Reading Music:* THE BASICS

## The Treble Clef

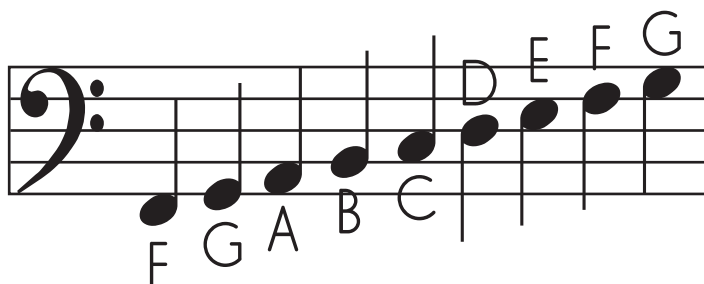


On the piano, the treble clef is played with the right hand. Notes can either sit on or above a staff line.

Here's a simple way to remember which notes sit on or in between the staff lines:

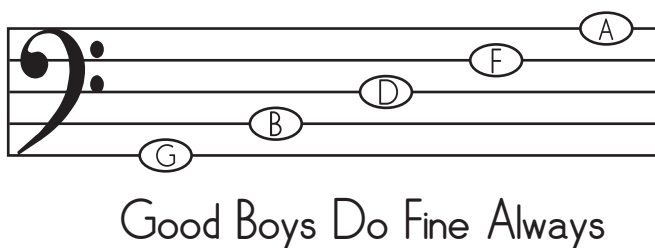


## The Bass Clef



On the piano, the bass clef is played with the left hand. Notes can either sit on or above a staff line.

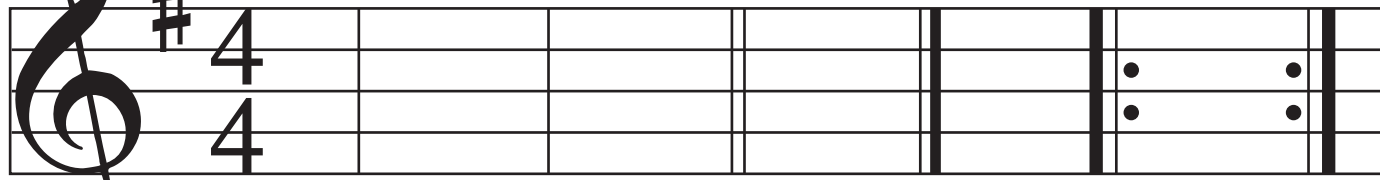
Here's a simple way to remember which notes sit on or in between the staff lines:



# Reading Music: MUSIC VOCAB

Treble Clef

Key Signature: a series of sharp or flat symbols placed at the beginning of the staff.  
If a note is marked sharp or flat in the key signature, it will always be played as so throughout the song.



Standard Double End Begin Repeat End Repeat

Measure [Bar]: segment of beats defined by the time signature.  
Above are some different types of bar-lines.

Time Signature: used to tell how many beats are in each measure and which note value gets one beat.

## Basic Note Value and Rests



Sixteenth Notes




Eighth Notes



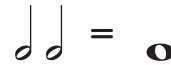

Quarter Notes  
[1 beat]



Half Notes




Whole Note



Rest: an interval of silence represented by a symbol which tells how long the rest lasts.  
Below are examples of different lengths of rests.



1/16 1/8 1/4 1/2 1