



BASE PRICES

ELEVATION

<u>Floor Plan</u>	<u>Style</u>	<u>Sq.Ft.</u>	<u>Base Price</u>	<u>A</u>	<u>B</u>	<u>C</u>
AVALON 3 Bedroom 2 full bath	Ranch	2120	\$555,900	BASE	\$10,000	\$17,000
AVALON II 3 Bedroom 2 -1/2 bath Optional 3 bedroom	Ranch	2212	\$568,900	BASE	\$10,000	\$17,000
			\$1,990.00			
BUCKLEY 4 Bedroom	Colonial	2480	\$554,900	BASE	\$3,000	\$7,000
HAMPTON 4 Bedroom Optional Tile Shower with Seat (no Tub)	Colonial	2487	\$554,900	BASE	\$3,000	\$7,000
			\$0			
HARTWELL 4 Bedroom Standard 1st Floor Laundry Optional 2nd Floor Laundry minus 15 sq.ft.	Colonial	2705	\$589,900	BASE	\$4,000	\$6,000
					Optional 3-1/2 Bath Floor Plan	\$9,900
					Optional Sunroom	\$ 22,500
RALEIGH 4 Bedroom Standard 2nd Floor Laundry Optional Master Bath w/Tub	Colonial	2870	\$584,900	BASE	\$3,000	\$13,000
			\$2,950			
HARPER 3 Bedroom 1st Floor Main Bedroom	Cape Cod	2484	\$557,900	BASE	\$3,000	\$5,000
HARPER 4 Bedroom 1st Floor Main Bedroom Optional Master Bath Deluxe Shower	Cape Cod	2653	\$567,900	BASE	\$3,000	\$5,000
			\$ 950		Optional 3-1/2 Bath Floor Plan	\$ 9,900

Base Prices subject to change without notice or obligation.

Effective Date: 1.30.2024



Call/Text: 734.564.5154
staceypardikes.com





Standard Features

Community Features

- Protective Restrictive Covenants
- Underground Utilities. Municipal Water & Sewer
- Highly Sought South Lyon Community Schools
- "Estate-Size" - Home Sites
- Asphalt Road with Concrete Curbs & Sidewalks

Construction Features

- 3 Car Side Entry Garage - Included
- 7'-10" Poured Concrete Basement Walls
- 10 Year Basement Waterproof System & Warranty
- 4 Sided Brick on 1st Floor (per Plan). Address Stone
- I - Joists & "Structural Gold" Sub-Floor System
- *Tyvek*® House or equal
- Maintenance Free Exterior with Aluminum
- Wrapped Trim & Fascia Boards, Vinyl Overhangs
- Glued and Screwed Sub-Floors

Exterior Features

- Elegantly Detailed Traditional Elevations
- *IKO*® - 30 Year Dimensional Shingles
- Concrete Driveways and Walks
- Two Weather Resistant Electrical Outlets
- 150 AMP Electric Service
- Two Exterior Water Spigots
- Completely Drywalled Garage
- Gutters & Downspouts

Interior Features

- 9' Ceilings – First Floor
- Beautiful Architectural 4 - 1/2" Base Molding
- Large 2 - 3/4" Case Molding around Doors
- Cased Thru-way at 1st Floor
- Gas Fireplace with Marble Surround & Mantle
- 3-1/4" Plank x 3/4" Pre-Finished Solid Oak Flooring in Foyer, Powder Room, Kitchen & Nook
- *Remier*® Stain Resistant Carpet and 8 LB Padding
- 12" x 24" Ceramic Tile Floor in Laundry Room
- 2 Panel Smooth Interior Doors w/Lever Style Handles
- *Sherwin Williams*® Interior Paint
- Builder Light Fixture Package & Door Chime
- Overhead Bedroom Ceiling Lights
- Total of 4 - Phone and Cable Outlets
- Protective Smoke & Carbon Monoxide Detectors
- Nova-Ply Closet Shelves with Hanging Rods per plan
- Prepared for Gas or Electric Dryer with Vent
- Prepped for Garage Door Opener

Energy Saving Features

- *Nelsons* Patented 2 - Step "Energy Seal" Process
- *Bryant*® 96.2% Efficiency Furnace w/ECM Motor
- *Programmable Thermostat*
- *Bryant*® Central Air and *Bryant*® Humidifier
- "Pella" Windows with Low E Glass/Argon Gas
- R-38 Attic/R-13 Wall Insulation/Min 4" Bsmt Blanket
- Fully Insulated Steel Entry Doors
- High Efficiency 50 Gallon Water Heater

Kitchen Features

- Vast Selection of *Aristokraft*® Cabinets.
- Granite Countertop with 4" Backsplash
- Undermount Stainless Steel Sink
- *Moen*® Kitchen Sink Faucet with Pull-Out Sprayer
- 1/3 HP *ISE*® Garbage Disposal
- Gas Line or 220V for Range
- Waterline for Ice maker
- Kitchen Exhaust Vented to Outside

Bathroom Features

- Granite Countertops with Self Rimming Sinks
- *Delta*® Single Lever Faucets
- Pedestal Sink @ Powder Room
- Full Length Mirror at Bath Vanities
- Luxurious Soaking Tub @ Master Bath (per plan)
- Full Ceramic Tile Shower @ Master Bath
- Bath Tub with Ceramic Tile Walls @ Main Bath
- Ceramic Tile Floors in Main & Master Bathrooms
- Bathroom Vent Fans

Our Most Popular Optional Features

- Rough In For Future Basement Bath
- Cabinet Enclosed or Free Standing Utility Tub
- Ceiling Fan Preps & Recessed Lights
- Oak railing and metal spindles 2nd floor staircase
- Double Oven/Cooktop Kitchen Layout
- Insulated and Finished Drywall in Garage
- 8' - 10" Poured Basement Foundation Wall

1.13.2022

Proudly Built By:

Sales and Marketing By:



Call/Text: 734.564.5154
staceypardikes.com



Standard Features are subject to change without notice or obligation.

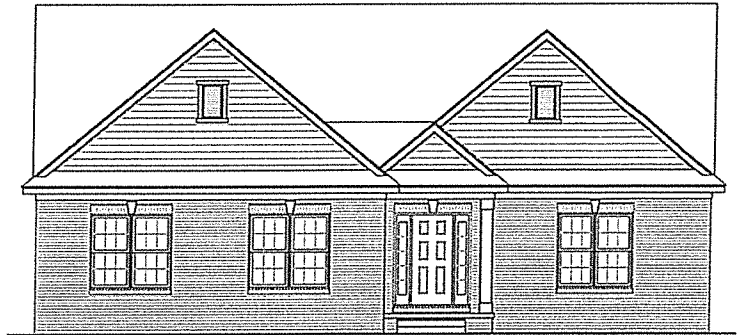
www.staceypardikes.com



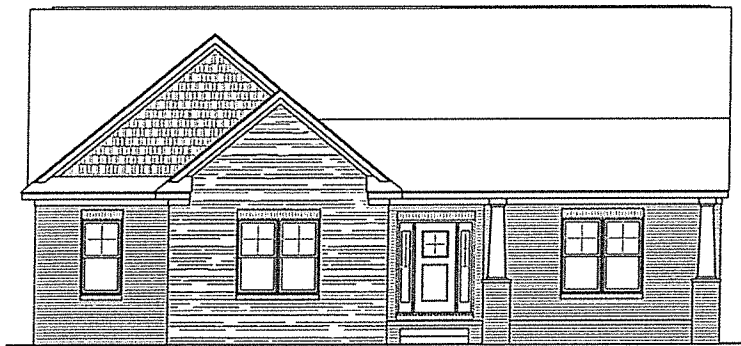
HASENCLEVER FARMS

The Avalon

3 Bedroom Ranch
2,120 sq. ft.



ELEVATION - A



ELEVATION - B

Proudly Built By:



Sales & Marketing By:



Call/Text: 734.564.5154
staceypardikes.com



ELEVATION - C

Prices, plans and specifications are subject to change without notice or obligation. Renderings are an artist's conception and may vary in construction.



HASENCLEVER FARMS

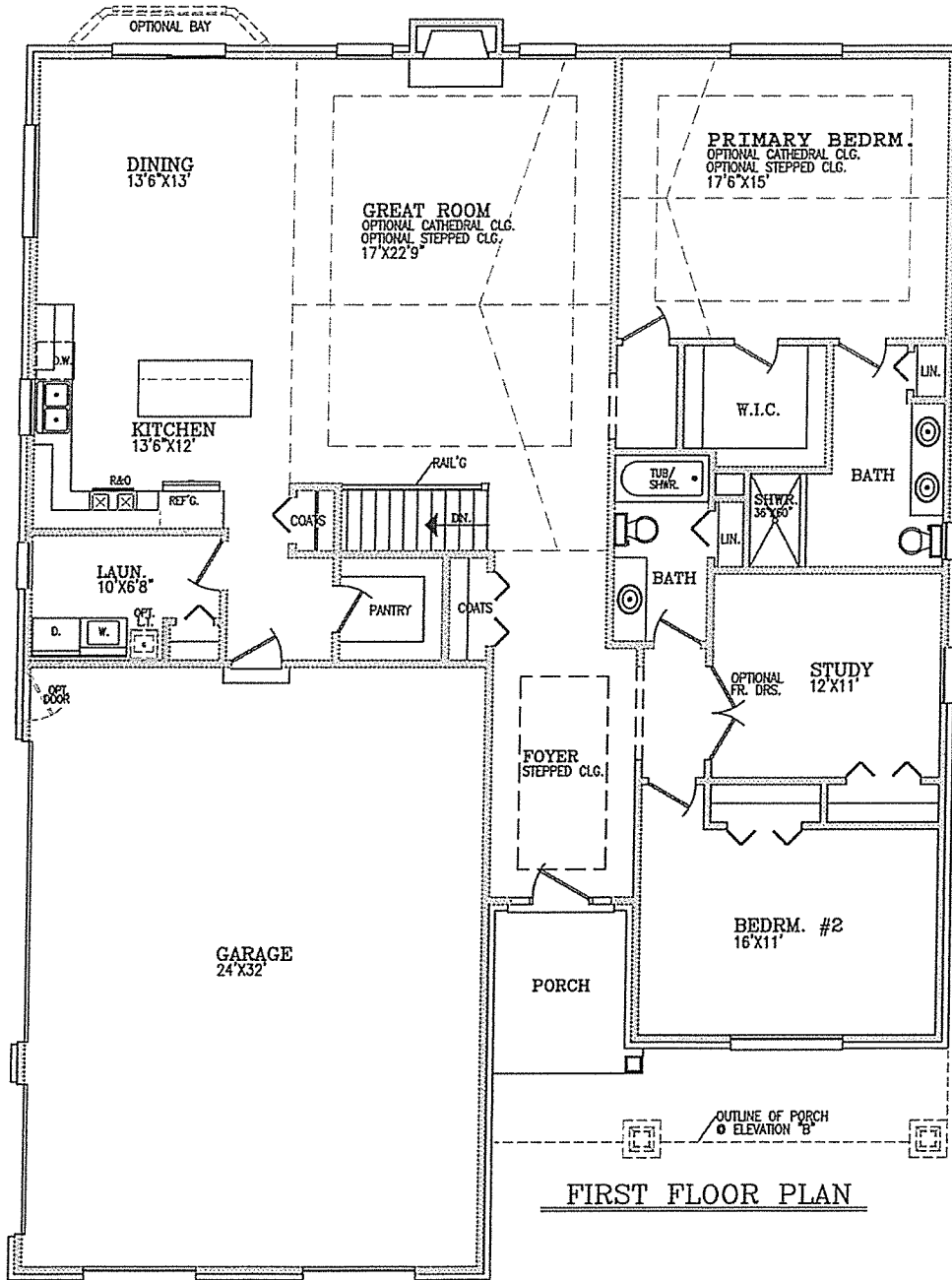
The Avalon

3 Bedroom Ranch
2,120 Sq. Ft.

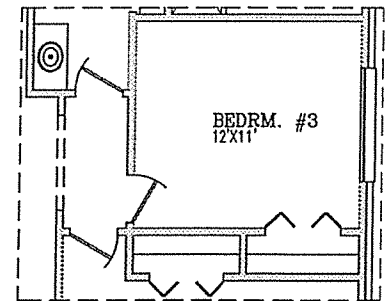
Proudly Built By:



JDM
BUILDING COMPANY LLC.



FIRST FLOOR PLAN



OPTIONAL BEDRRM #3

Sales & Marketing By:



Call/Text: 734.564.5154
staceypardikes.com

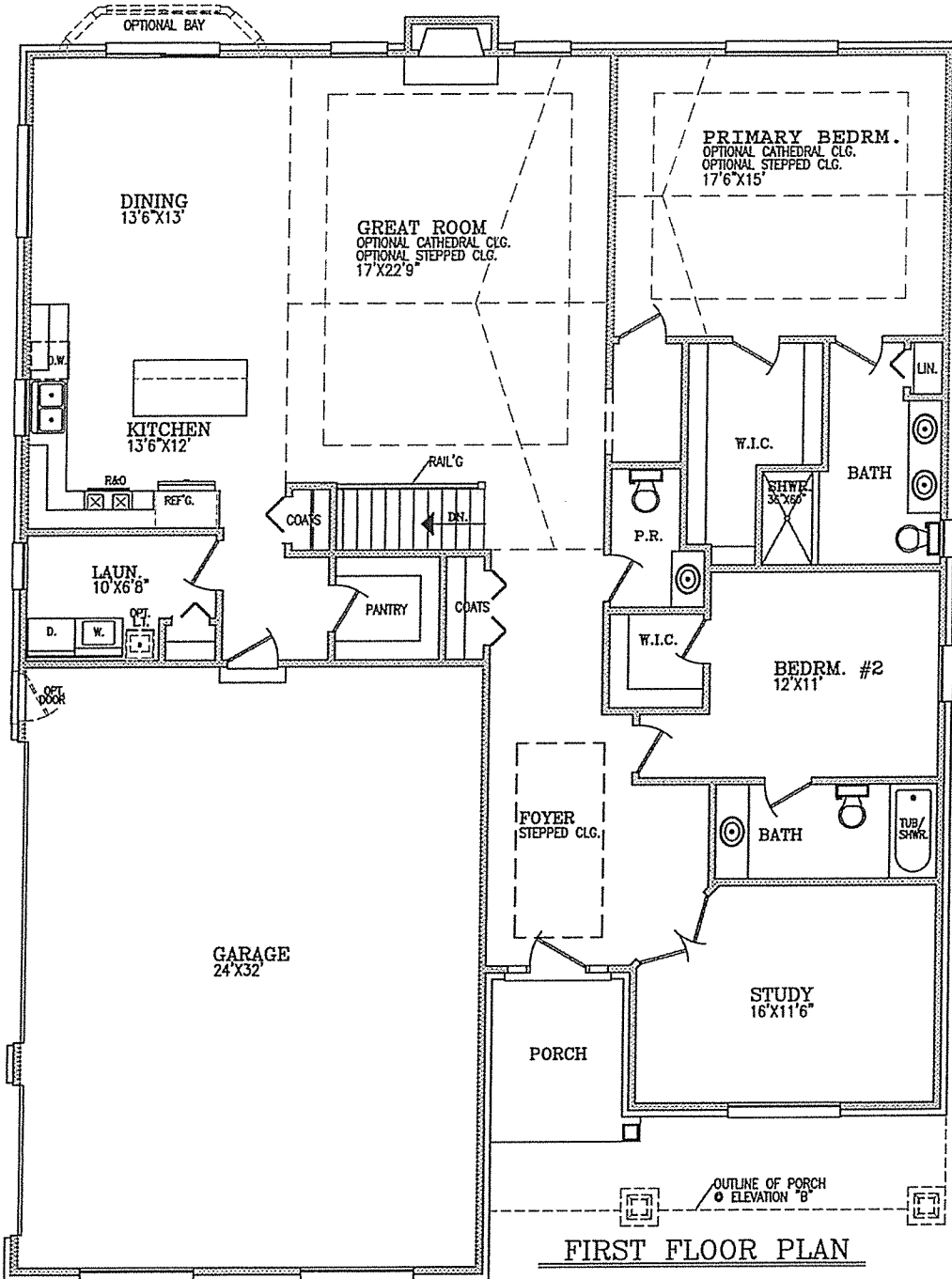




**HASENCLEVER
FARMS**

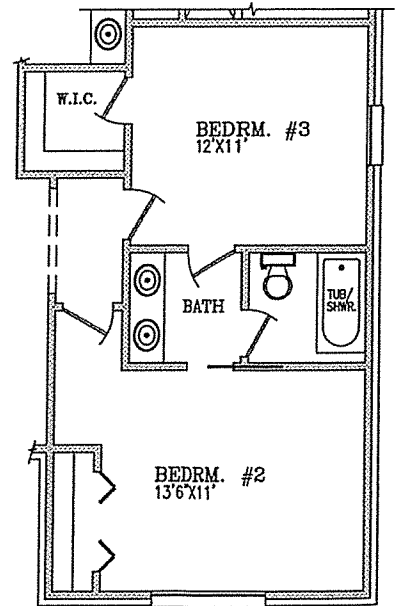
The Avalon 2

3 Bedroom Ranch
2,212 Sq. Ft.



FIRST FLOOR PLAN

Proudly Built By:



OPTIONAL BEDROOM #3

Sales & Marketing By:



Stacy Pardikes, ABR, PSA, PPS
REALTOR®
Cell/Text: 734.564.5154
staceypardikes.com





HASENCLEVER FARMS

The Buckley 4 Bedroom Colonial

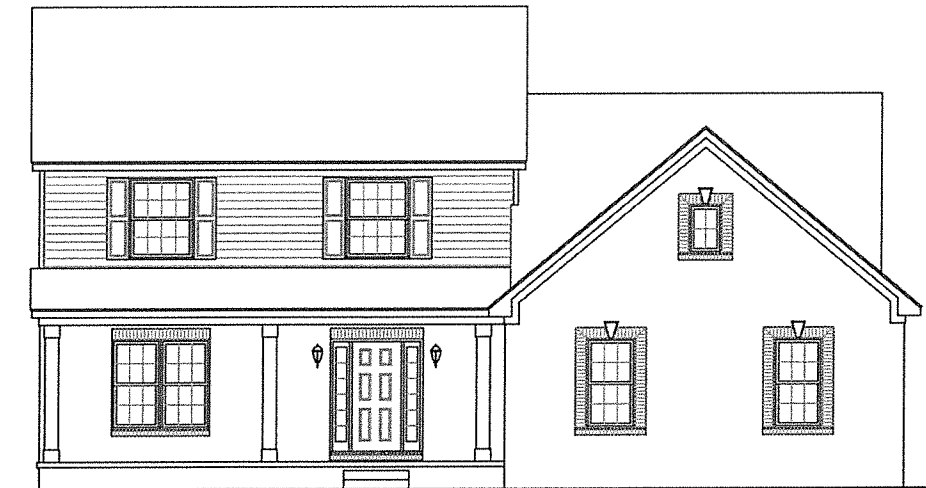


ELEVATION - A

Proudly Built By:



BUILDING COMPANY LLC.

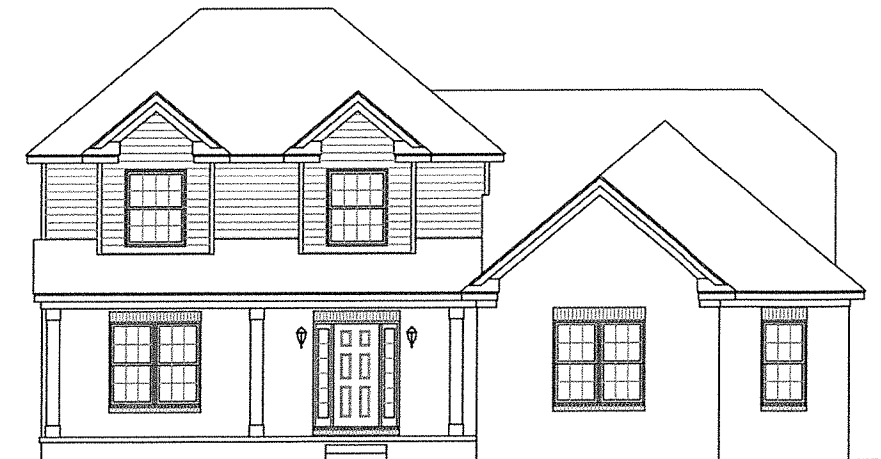


ELEVATION - B

Sales & Marketing By:



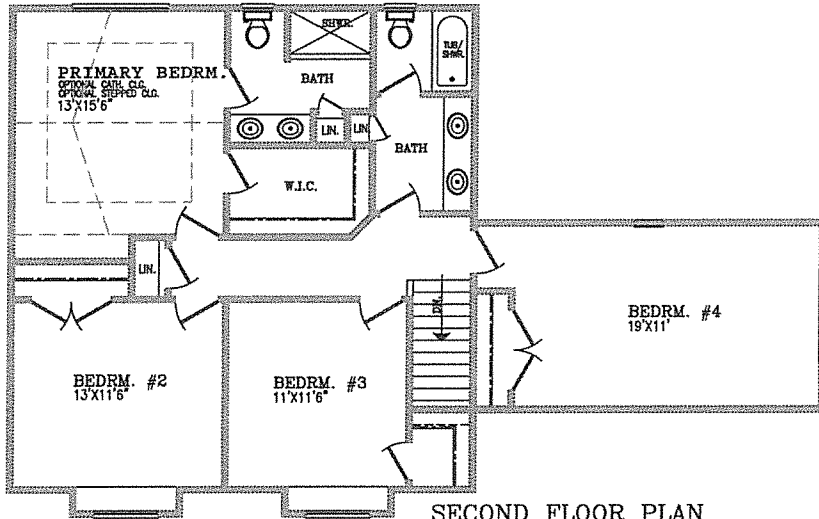
Call/Text: 734.564.5154
staceypardikes.com



ELEVATION - C



HASENCLEVER FARMS

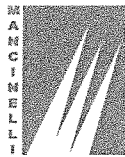


SECOND FLOOR PLAN

The Buckley

4 Bedroom Colonial
2,480 Sq. Ft.

Proudly Built By:

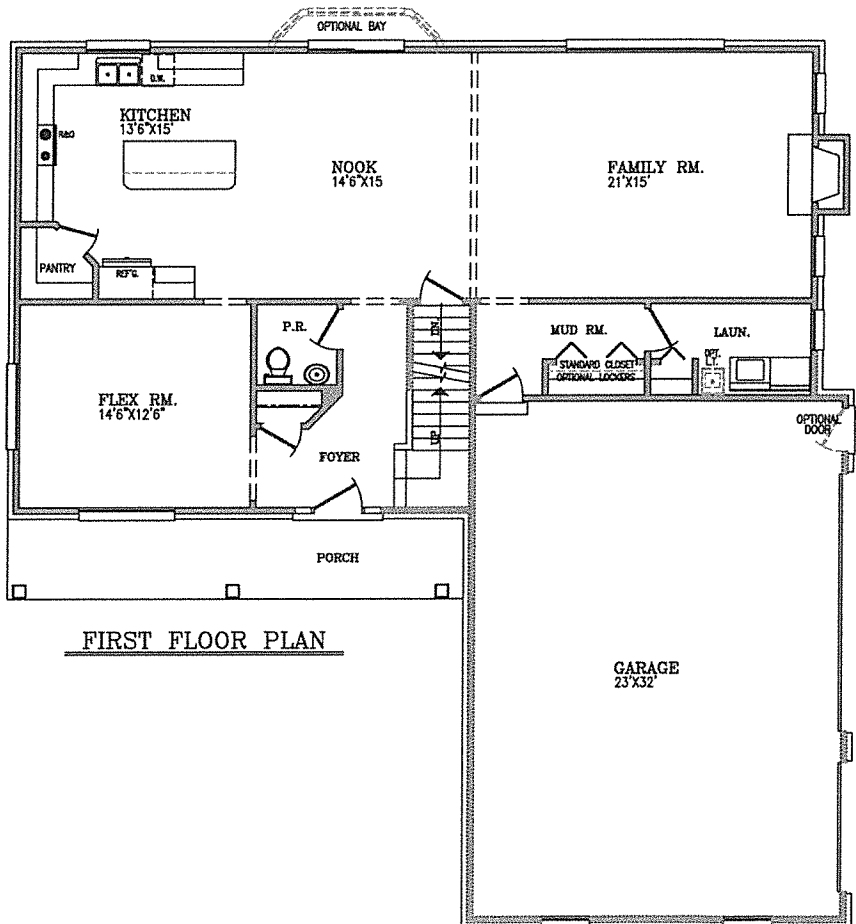


JDM
BUILDING COMPANY LLC.

Sales & Marketing By:



Call/Text: 734.564.5154
staceypardikes.com



FIRST FLOOR PLAN



HASENCLEVER FARMS

The Hampton

4 Bedroom Colonial

2,487 sq. ft.



ELEVATION - A



ELEVATION - B

Proudly Built By:

CANZANO
Building Companies



Sales & Marketing By:



Call/Text: 734.564.5154
staceypardikes.com



ELEVATION - C

Prices, plans and specifications are subject to change without notice or obligation. Renderings are an artist's conception and may vary in construction.

The Hampton

4 Bedroom Colonial

2,487 Sq. Ft.



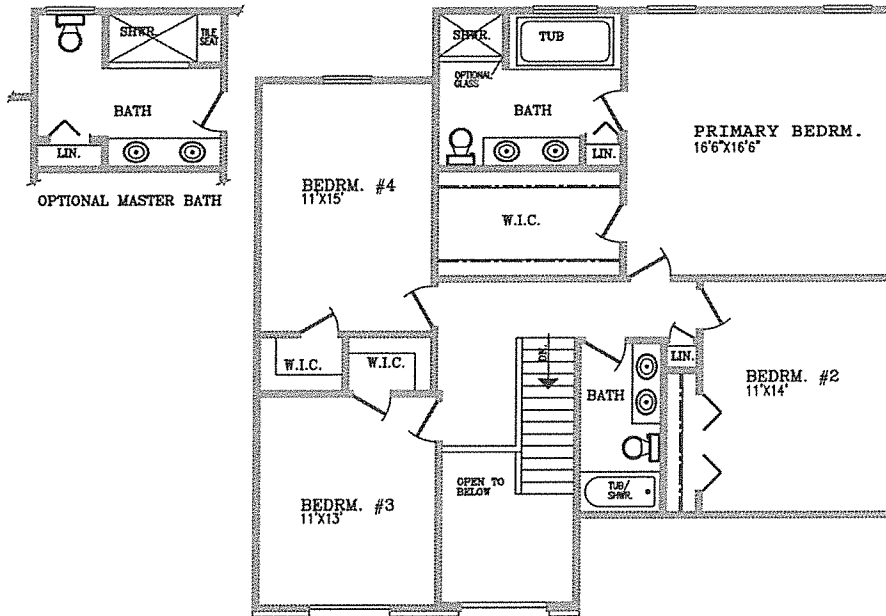
HASENCLEVER FARMS

Proudly Built By:

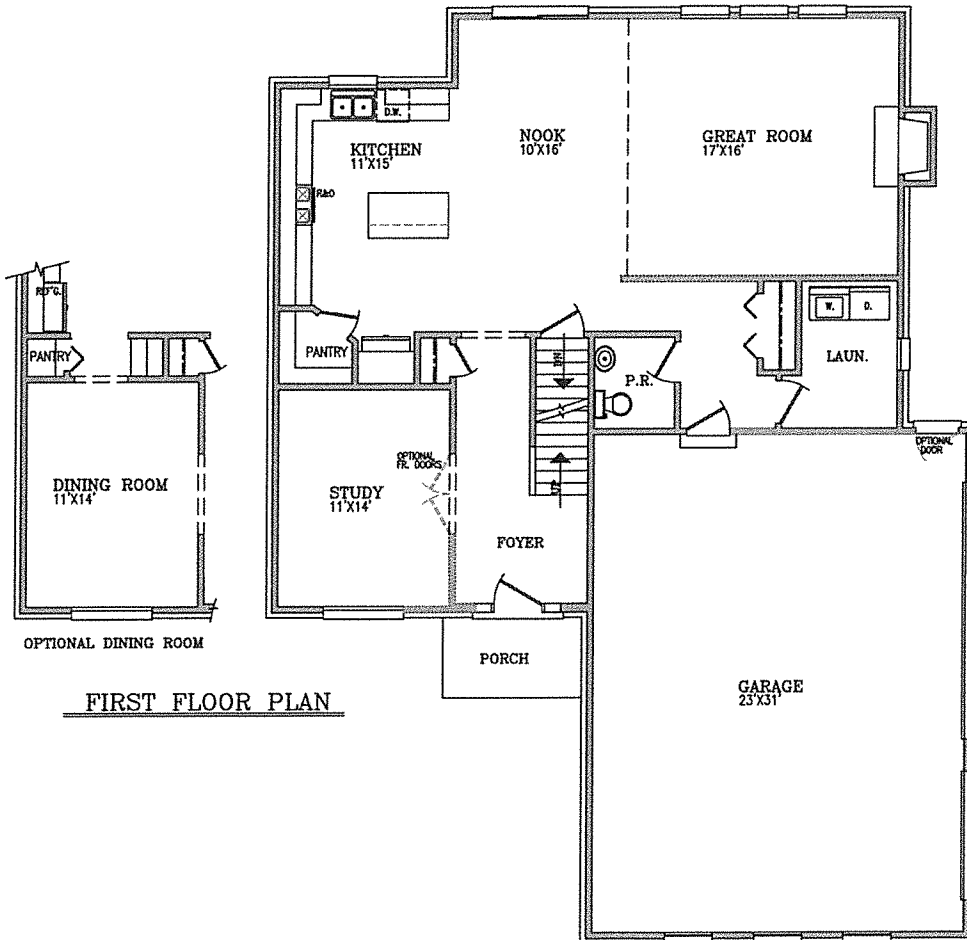
CANZANO
Building Companies



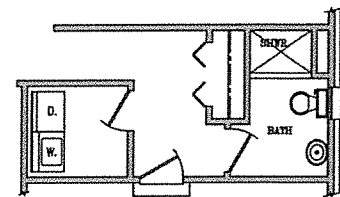
BUILDING COMPANY LLC.



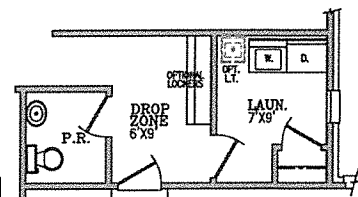
SECOND FLOOR PLAN



FIRST FLOOR PLAN



OPTIONAL FULL BATH



OPTIONAL DROP ZONE

Sales & Marketing By:



Call/Text: 734.564.5154
staceypardikes.com





HASENCLEVER FARMS

The Hartwell

4 Bedroom Colonial

(1st floor laundry)

2,705 Sq. Ft.

(add 180 Sq. Ft. for optional Sunroom)



ELEVATION - A



ELEVATION - B

Proudly Built By:



Building Companies



BUILDING COMPANY LLC.

Sales & Marketing By:



Call/Text: 734.564.5154
staceypardikes.com

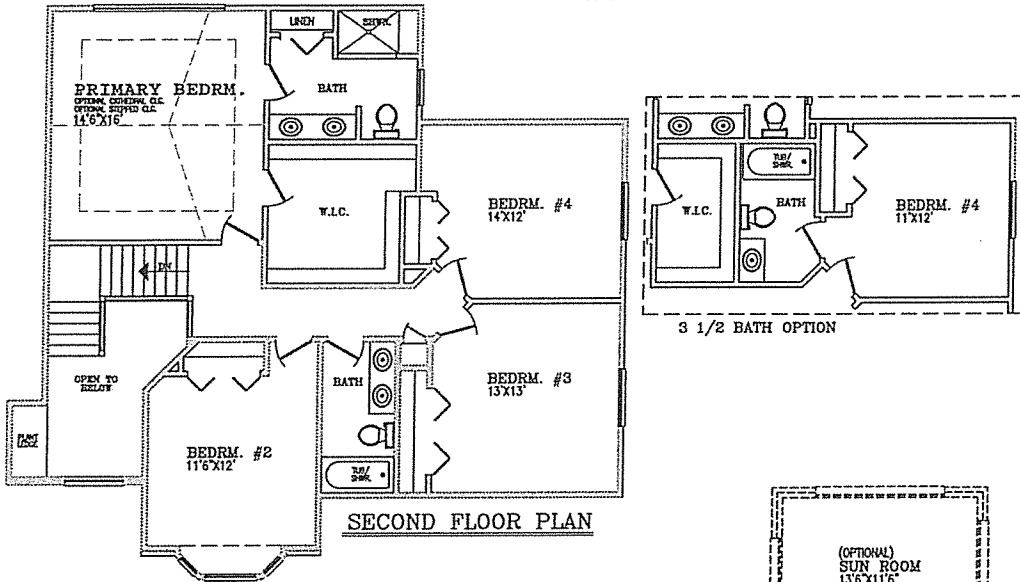


ELEVATION - C

Prices, plans and specifications are subject to change without notice or obligation. Renderings are an artist's conception and may vary in construction.



HASENCLEVER FARMS



The Hartwell
 4 Bedroom Colonial
 (1st floor laundry)
 2,705 Sq. Ft.
 (add 180 Sq. Ft. for optional Sunroom)

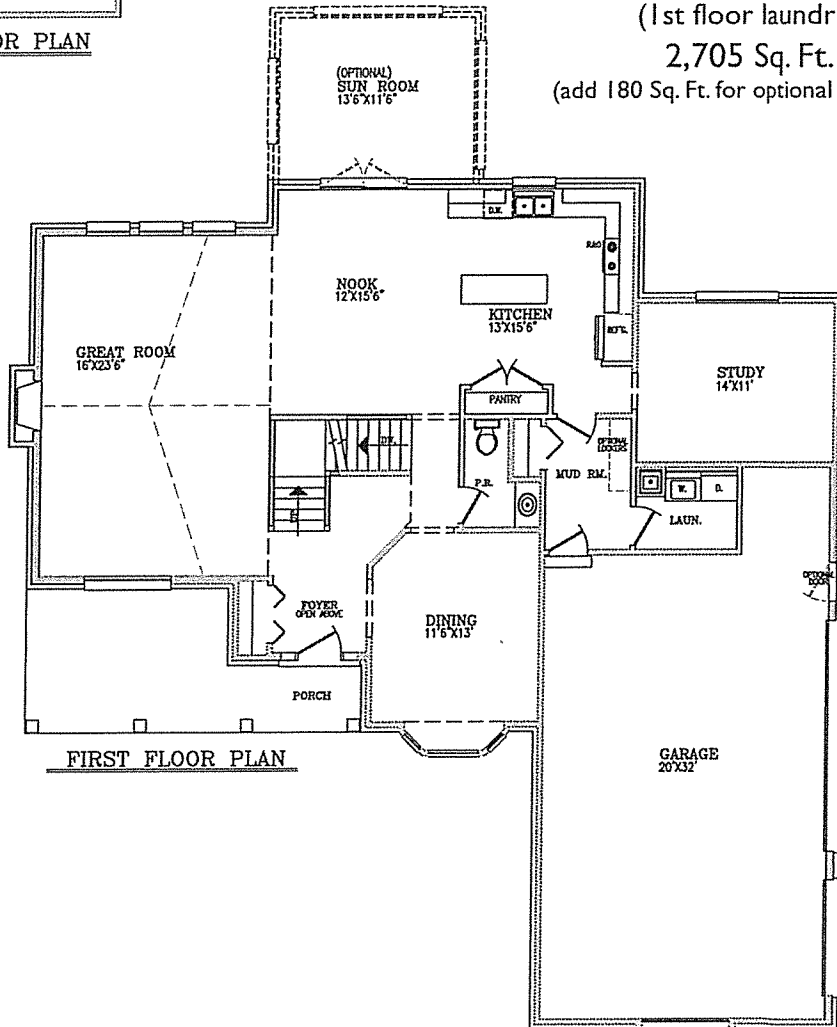
Proudly Built By:
CANZANO
 Building Companies



Sales & Marketing By:



Call/Text: 734.564.5154
 staceypardikes.com

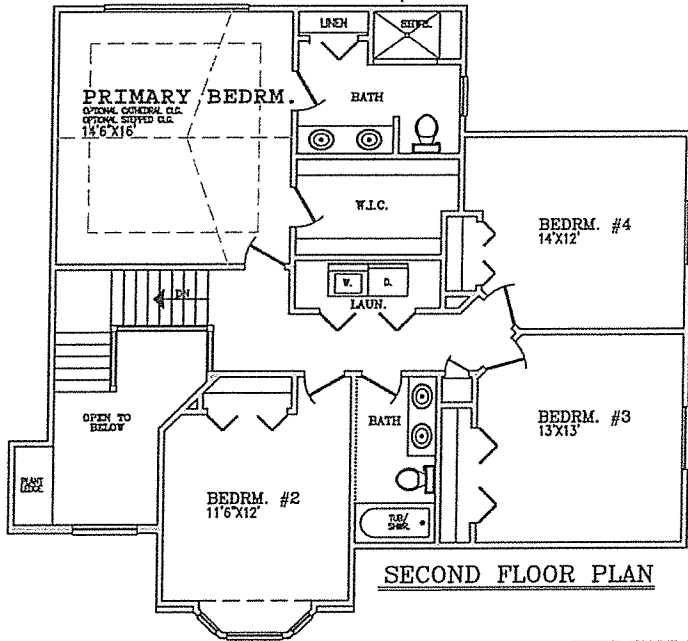




HASENCLEVER FARMS

The Hartwell

4 Bedroom Colonial (2nd floor laundry)
2,690 Sq. Ft.
(add 180 Sq. Ft. for optional Sunroom)



SECOND FLOOR PLAN

Proudly Built By:



Building Companies

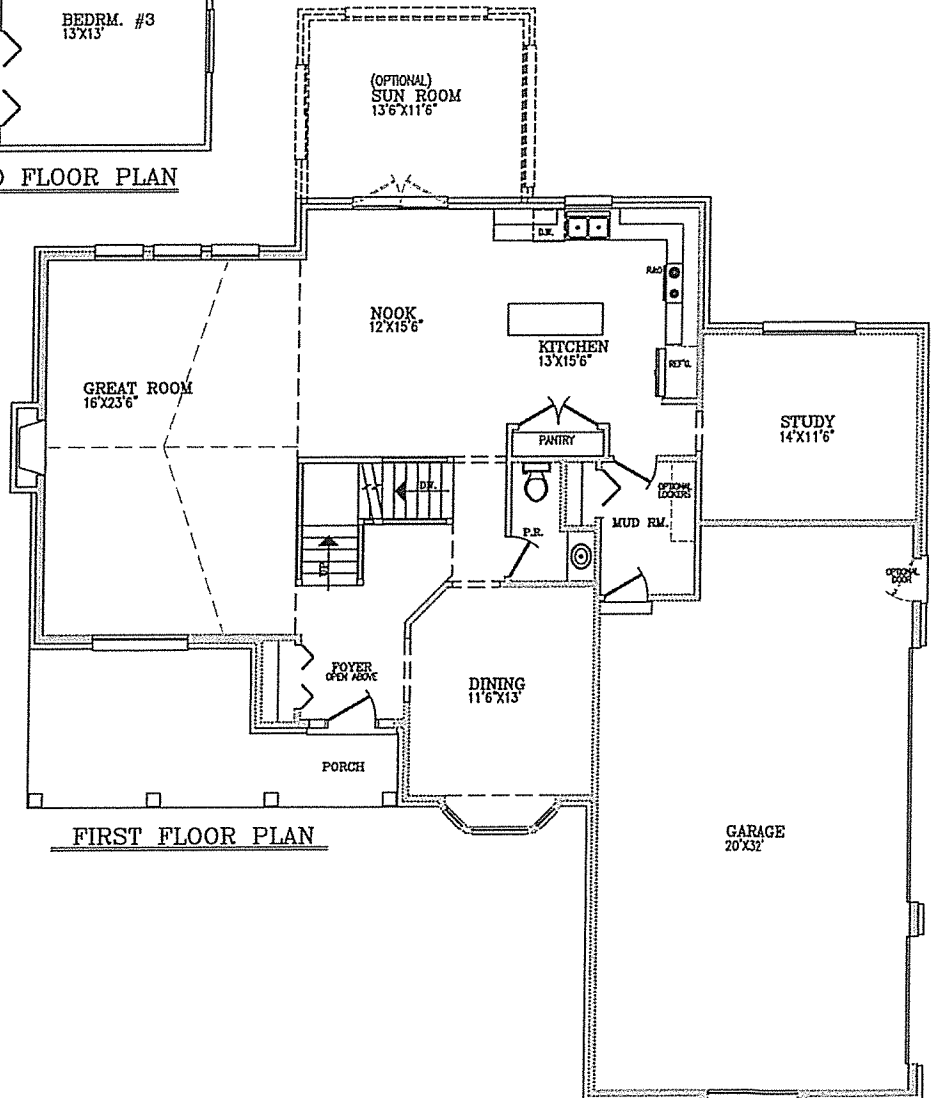


BUILDING COMPANY LLC.

Sales & Marketing By:



Call/Text: 734.564.5154
staceypardikes.com



FIRST FLOOR PLAN



HASENCLEVER FARMS

The Raleigh
4 Bedroom Colonial
(1st or 2nd floor laundry)
2,870 Sq. Ft.



ELEVATION - A



ELEVATION - B

Proudly Built By:

CANZANO
Building Companies



Sales & Marketing By:



Call/Text: 734.564.5154
staceypardikes.com



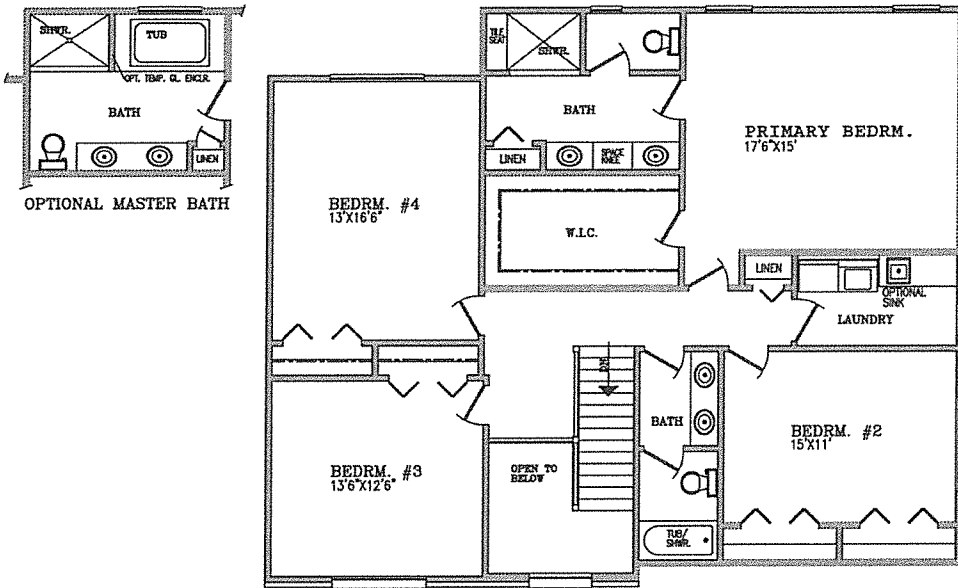
ELEVATION - C



HASENCLEVER FARMS

The Raleigh

4 Bedroom Colonial
(2nd floor laundry)
2,870 Sq. Ft.



SECOND FLOOR PLAN

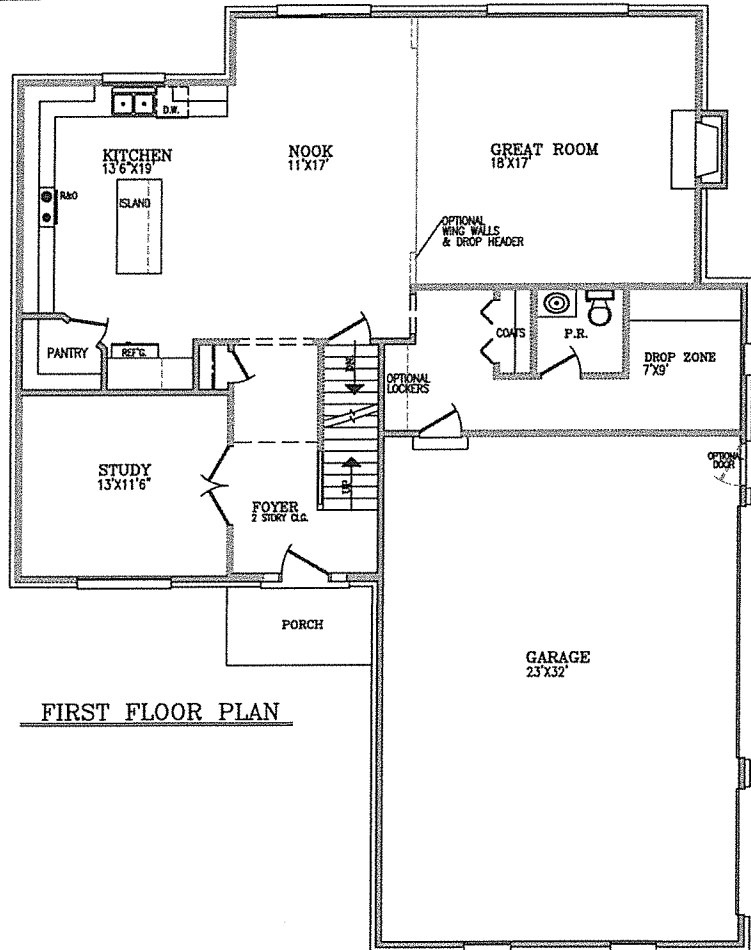
Proudly Built By:



Sales & Marketing By:



Call/Text: 734.564.5154
staceypardikes.com



FIRST FLOOR PLAN

Deer Haven
at Hasenclever Farms

HASENCLEVER
FARMS



ELEVATION - A

The Harper

First Floor Master

3 or 4 Bedroom

2,484 sq. ft - 2,653 sq.ft



ELEVATION - B

Proudly Built By:



Sales & Marketing By:



Call/Text: 734.564.5154
staceypardikes.com



ELEVATION - C



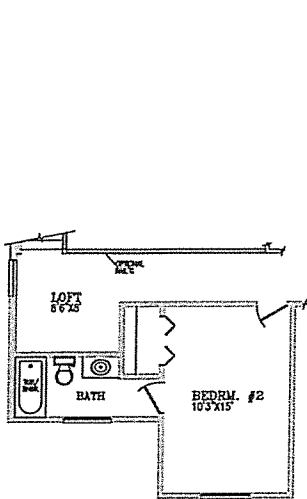
HASENCLEVER FARMS

The Harper

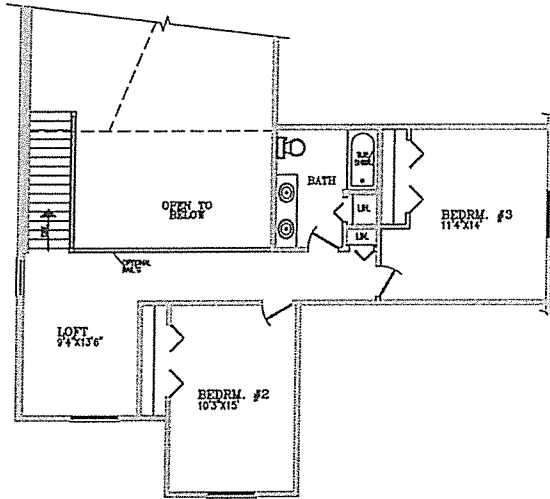
First Floor Master

3 or 4 Bedroom

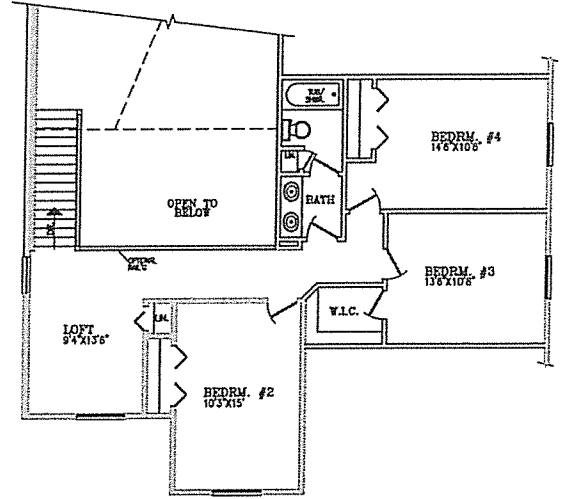
2,484 sq. ft - 2,653 sq.ft



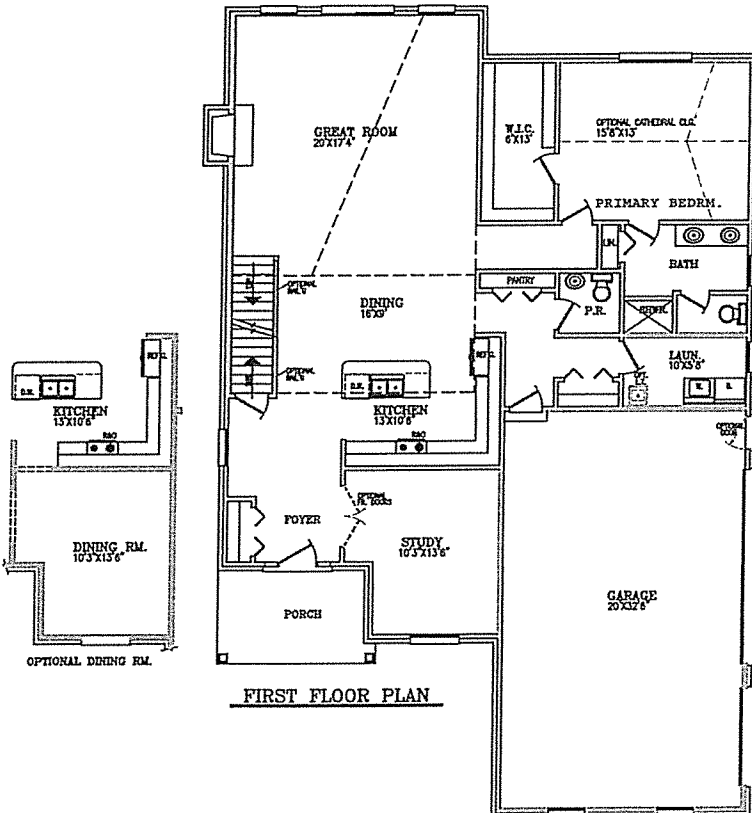
OPTIONAL 3 1/2 BATH



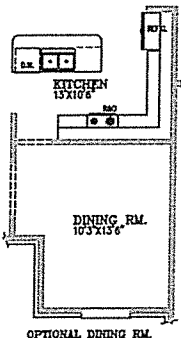
SECOND FLOOR PLAN



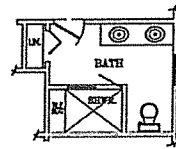
SECOND FLOOR PLAN
4 Bedroom Option



FIRST FLOOR PLAN



OPTIONAL DINING RM.



OPTIONAL MASTER BATH
DELUXE SHOWER

Proudly Built By:



Sales & Marketing By:



Call/Text: 734.564.5154
staceypardikes.com



LOT PREMIUM PRICING

<u>LOT #</u>	<u>LOT FEATURE</u>	<u>LOT PREMIUM</u>
1	lot will only fit Hampton, Raleigh, Harper	\$5,000
2	WOODED/DETENTION POND	\$10,000
3	WOODED/DETENTION POND	\$7,500
4	WOODED/DETENTION POND	SOLD
5	WOODED/DETENTION POND	SOLD
7	CORNER LOT	SOLD
8	HAMPTON SPEC	SOLD
9	WOODED/DETENTION POND	SOLD
10	WOODED/DETENTION POND	SOLD
12	WOODED/DETENTION POND	SOLD
14	WOODED/DETENTION POND	SOLD
15	PARTIAL DAYLIGHT	SOLD
37	WOODED	SOLD
38	WOODED	SOLD
40	WOODED	SOLD
41	WOODED	SOLD
42	WOODED	SOLD
43	WOODED	SOLD
44	WOODED	SOLD
46	WOODED	SOLD
47	WOODED	SOLD
48	WOODED	SOLD
49	WOODED	SOLD
50	HARPER SPEC	\$7,500

2/15/2024

Garage Orientation & Sump Pump are Pre-Determined and Cannot Be Changed

Lot Premiums and Availablity are subject to change without notice or obligation

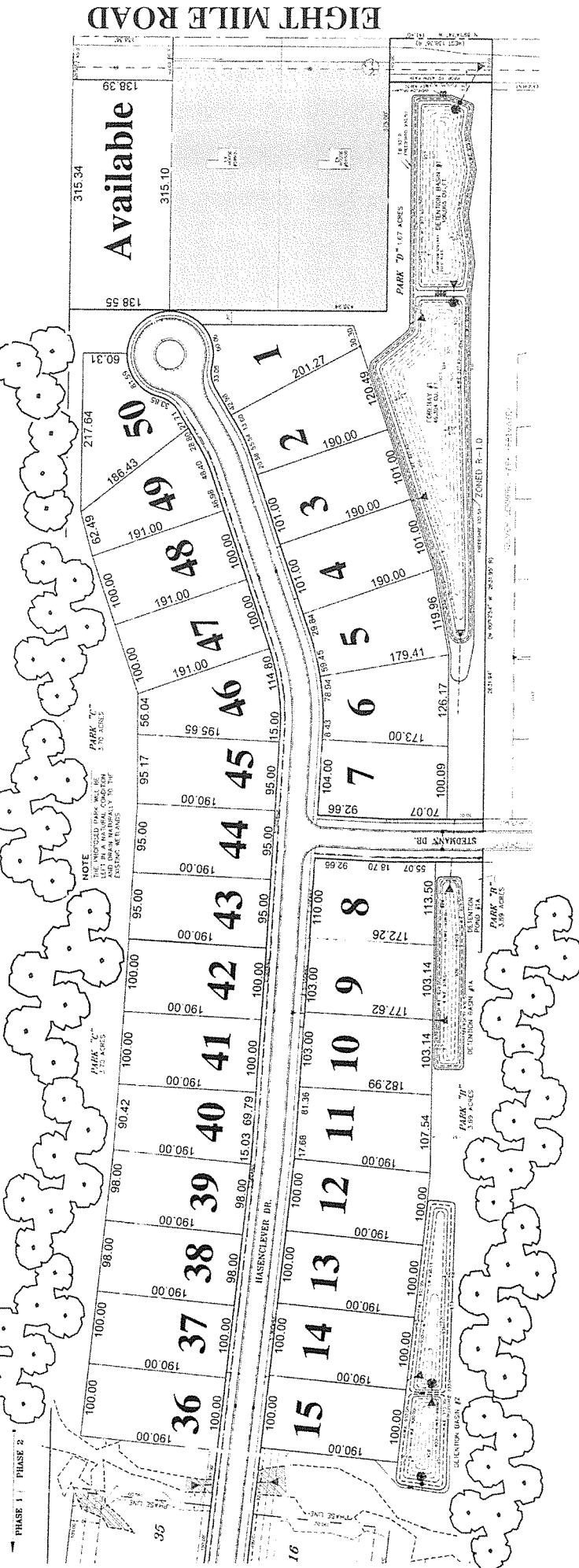
FOR MORE INFORMATION CONTACT Stacey Pardikes 734.564.5154

www.staceypardikes.com

Hasenclever Farms - Phase 2



NO SCALE



OPTIONAL FEATURE PRICING



	Avalon	Avalon 2	Bucklev	Hampton	Harper	Hartwell	Raleigh
Garage Service Door with 4'x4' Concrete Pad	1,198	1,198	1,198	1,198	1,198	1,198	1,198
Cathedral Ceiling in Master Bedroom / Great Room	1,450	1,450	1,450	1,450	1,450	1,450	na
Step Ceiling in Great Room	1,950	1,950	na	na	na	na	na
Step Ceiling in Master Bedroom	1,950	1,950	1,950	NA	1,950	1,950	NA
Double Oven with Cooktop Kitchen Layout in Cabinets Includes 220V Line for Double Oven, Gas Line for Cooktop and Installation of Purchaser Supplied Cooktop and Double Oven	na	na	tbd	tbd	tbd	tbd	tbd
Installation of Purchaser's Supplied Chimney Hood Fan (must select if adding to kitchen)	300	300	300	300	300	300	300
Bayed Doorwall in Nook with 2 Side Windows	2,895	2,895	2,895	na	na	2,895	na
Optional Lockers/Drop Zone	na	na	2,495	2,495	na	2,495	2,495
Drain for Sink in Basement	415	415	415	415	415	415	415
Two Piece Basement Bath Prep in Std Location	2,075	2,075	2,075	2,075	2,075	2,075	2,075
Three Piece Basement Bath Prep in Std Location	2,475	2,475	2,475	2,475	2,475	2,475	2,475
Free Standing Utility Tub in Laundry Room	1,005	1,005	1,005	1,005	1,005	1,005	1,005
Free Standing Utility Tub in Basement	1,150	1,150	1,150	1,150	1,150	1,150	1,150
Cabinet Enclosed Utility Tub with Granite Countertop	2,675	2,675	2,675	2,675	2,675	2,675	2,675
48" Pivot/Panel Shower Door(Chrome Finish/Clear Glass)@MstrBath	1,800	1,800	1,800	1,800	1,800	1,800	1,800
By-Pass Shower Door (Chrome Finish w/Clear Glass) available only @ Main Hall Bath (Tub/Shower Combo)	970	970	970	970	970	970	970
Ceiling Fan Prep with dual control wiring at Flat Ceiling -- each	150	150	150	150	150	150	150
Ceiling Fan Prep with dual control wiring at Vaulted/Cathedral Ceiling - each	230	230	230	230	230	230	230
Installation of Purchaser's Supplied Ceiling Fan - each	150	150	150	150	150	150	150
Installation of Purchaser's Supplied Ceiling Fan @ Cathedral or Vaulted Ceiling	250	250	250	250	250	250	250
Wet Location Recessed Light at new opening -- each	235	235	235	235	235	235	235
Recessed Light LED Soft White at existing opening - each	135	135	135	135	135	135	135
Recessed Light LED Soft White at NEW opening - each	165	165	165	165	165	165	165
Recessed Light at Vaulted or 2 Story Ceiling	185	185	185	185	185	185	185
Add a Switch (usually required when adding recess lights)	70	70	70	70	70	70	70
Add an Interior Plug -(Garage Plugs \$125.00)	70	70	70	70	70	70	70
Basement plug on existing circuit (\$225.00 on separate circuit)	175	175	175	175	175	175	175
Add Outlet for Car Charger in Garage	695	695	695	695	695	695	695
Cabinets Above Washer & Dryer (2-W3030) - Std Selection Only	tbd	tbd	tbd	tbd	tbd	tbd	tbd
Glass Door(s) in Study - Painted Single Door \$1400	1,950	1,950	1,950	1,950	1,950	1,400	1,950
Upgrade 2 nd Floor Stairway to Oak Railing & Metal Spindles	na	na	2,195	2,195	4,900	475	2,295
Increase Concrete Driveway to 20 feet wide	2,420	2,420	2,420	2,420	2,420	2,420	2,420
8'-10" Poured Basement Walls	8,450	8,800	6,800	6,575	7,800	7,520	6,950
Two Tone Paint - Trim Semi Gloss White & White Ceiling	1,200	1,200	1,400	1,400	1,300	1,400	1,400
Two Tone Paint - Wall Color - Flat Paint Only	1,800	1,800	2,200	2,200	1,900	2,400	2,400
Insulate Remaining Areas of 3 Car Garage (R-19 Ceiling)	1,995	1,995	1,995	1,995	1,995	1,995	1,995
Sand & Finish Drywall Standard 3 Car Garage(Ready to Prime/Paint)	1,200	1,200	1,200	1,200	1,200	1,200	1,200
Upgrade to 16' x 7' & 8' x 7' Insulated Garage Door	1,750	1,750	1,750	1,750	1,750	1,750	1,750
Oil Rubbed Bronze Door Hinges & Lever Door Handles	450	450	550	550	550	550	550
Oil Rubbed Bronze Lighting Fixture Package	1,200	1,200	1,600	1,600	1,600	1,800	1,800
Oil Rubbed Bronze Plumbing Fixture Throughout	2,490	2,490	2,490	2,490	2,490	2,490	2,490
Cabinet W/Granite Countertop in LIEU of Pedestal Sink @ Powder Room	1,900	1,900	1,900	1,900	1,900	1,900	1,900

Base Prices subject to change without notice or obligation.
 Current Optional Prices will be Applied at Time of Building Agreement or Change Order
 Effective Date 10.30.2023



Call/Text: 734.564.5154
 staceypardikes.com

