

Nozzel Connection Table

Conn.	Size	Type	Description
N1	ø 12"	ANSI 150# - Carbon steel	Make-Up/Pumped Returns
N2	ø 1/2"	NPT - Carbon steel	Pressure Gauge and Transducer
N3	ø 2"	ANSI 150# - Carbon steel	Vent
N4	ø 1/2"	NPT - Carbon steel	Level Column
N5	ø 1/2"	NPT - Carbon steel	Level Column
N6	ø 1/2"	NPT - Carbon steel	Seimens HP Level Control
N7	ø 1/2"	NPT - Carbon steel	Seimens LP Level Control
N8	ø 1-1/2"	ANSI 300# - Carbon steel	Safety Relief Valve
N9	ø 3"	ANSI 150# - Carbon steel	Condensate Return
N10	ø 3"	ANSI 150# - Carbon steel	Condensate Return
N11	ø 3"	ANSI 150# - Carbon steel	Steam Injection Sparge tube
N12	ø 3/4"	NPT - Carbon steel	Chemical Injection
N13	ø 3/4"	NPT - Carbon steel	Chemical Injection
N14	ø 2"	NPT - Carbon steel	Tank Drain
N15	ø 2"	NPT - Carbon steel	Pump Suction
N16	ø 2"	NPT - Carbon steel	Pump Suction
N17	ø 2"	NPT - Carbon steel	Pump Suction
N18	ø 2"	NPT - Carbon steel	Pump Suction (spare)
N19	ø 2"	NPT - Carbon steel	Over Flow
N20	ø 3/4"	NPT - Carbon steel	Thermometer
N21	ø 2"	NPT - Carbon steel	HP Trap Return
N22	ø 2"	NPT - Carbon steel	Vacuum Breaker
N23	ø 4"	Butt Weld - Carbon steel	Pumped Return
N24	ø 2"	NPT - Carbon steel	Make-Up
N25	ø 2"	NPT - Carbon steel	Pump Discharge
N26	ø 2"	NPT - Carbon steel	Pump Discharge
N27	ø 2"	NPT - Carbon steel	Pump Discharge
N28	ø 2"	NPT - Carbon steel	Pump Discharge (spare)

ENGINEER:

PROJECT:

CLIENT/CUSTOMER:

PAGE DESCRIPTION:


MODEL #:

WORK ORDER #:

SCALE: 1:50 DWG SIZE: B SHEET: 1 OF 2

DRAWN BY: KEENAN KELLY DATE: 21/12/2017

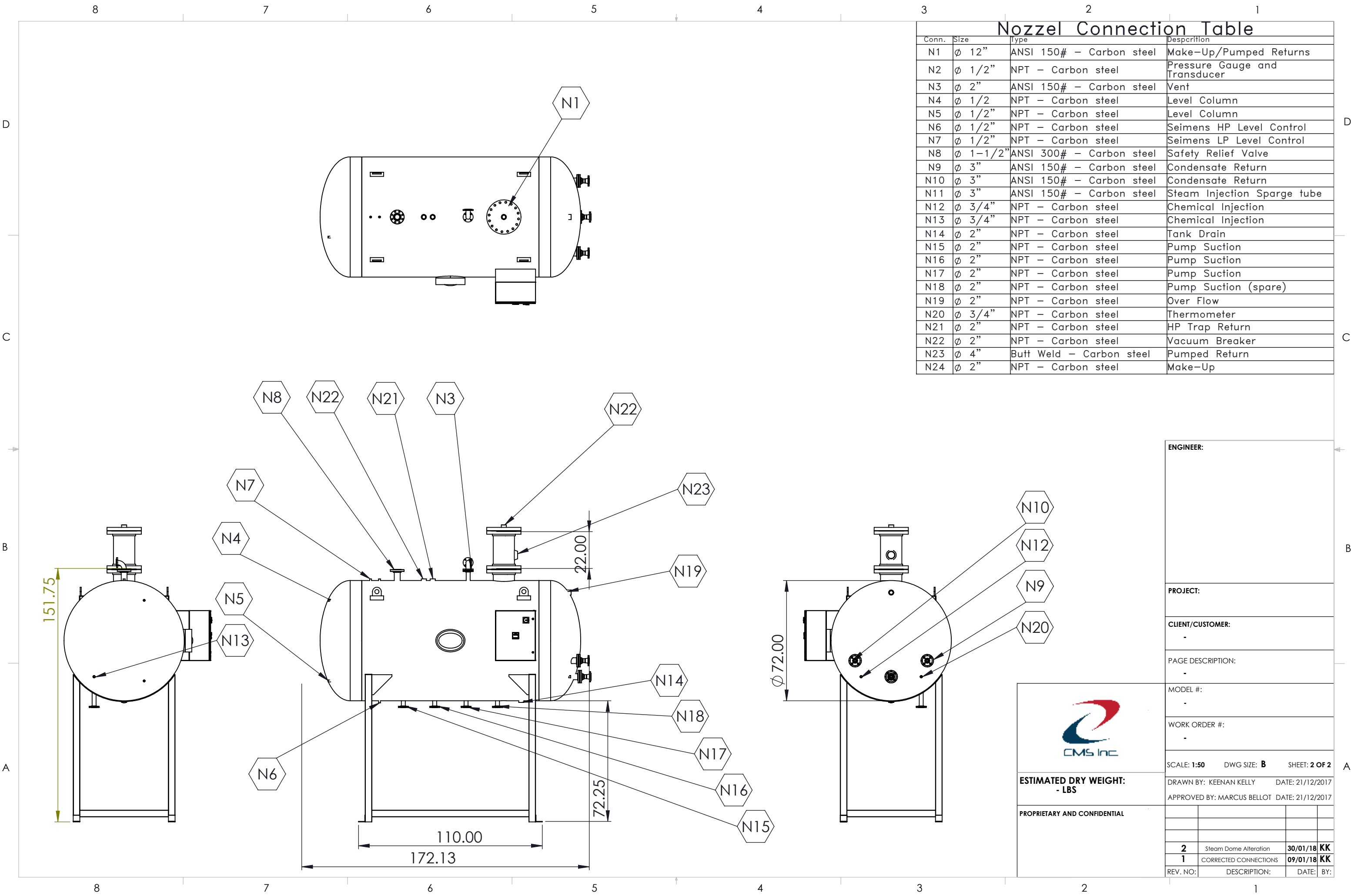
APPROVED BY: MARCUS BELLOT DATE: 21/12/2017



ESTIMATED DRY WEIGHT:
- LBS

PROPRIETARY AND CONFIDENTIAL

2	Steam Dome Alteration	30/01/18	KK
1	CORRECTED CONNECTIONS	09/01/18	KK
REV. NO:	DESCRIPTION:	DATE:	BY:



Nozzel Connection Table

Conn.	Size	Type	Description
N1	Ø 12"	ANSI 150# - Carbon steel	Make-Up/Pumped Returns
N2	Ø 1/2"	NPT - Carbon steel	Pressure Gauge and Transducer
N3	Ø 2"	ANSI 150# - Carbon steel	Vent
N4	Ø 1/2"	NPT - Carbon steel	Level Column
N5	Ø 1/2"	NPT - Carbon steel	Level Column
N6	Ø 1/2"	NPT - Carbon steel	Seimens HP Level Control
N7	Ø 1/2"	NPT - Carbon steel	Seimens LP Level Control
N8	Ø 1-1/2"	ANSI 300# - Carbon steel	Safety Relief Valve
N9	Ø 3"	ANSI 150# - Carbon steel	Condensate Return
N10	Ø 3"	ANSI 150# - Carbon steel	Condensate Return
N11	Ø 3"	ANSI 150# - Carbon steel	Steam Injection Sparge tube
N12	Ø 3/4"	NPT - Carbon steel	Chemical Injection
N13	Ø 3/4"	NPT - Carbon steel	Chemical Injection
N14	Ø 2"	NPT - Carbon steel	Tank Drain
N15	Ø 2"	NPT - Carbon steel	Pump Suction
N16	Ø 2"	NPT - Carbon steel	Pump Suction
N17	Ø 2"	NPT - Carbon steel	Pump Suction
N18	Ø 2"	NPT - Carbon steel	Pump Suction (spare)
N19	Ø 2"	NPT - Carbon steel	Over Flow
N20	Ø 3/4"	NPT - Carbon steel	Thermometer
N21	Ø 2"	NPT - Carbon steel	HP Trap Return
N22	Ø 2"	NPT - Carbon steel	Vacuum Breaker
N23	Ø 4"	Butt Weld - Carbon steel	Pumped Return
N24	Ø 2"	NPT - Carbon steel	Make-Up

ENGINEER:

PROJECT:

CLIENT/CUSTOMER:

PAGE DESCRIPTION:

MODEL #:

WORK ORDER #:

SCALE: 1:50 DWG SIZE: B SHEET: 2 OF 2

DRAWN BY: KEENAN KELLY DATE: 21/12/2017

APPROVED BY: MARCUS BELLOT DATE: 21/12/2017



**ESTIMATED DRY WEIGHT:
- LBS**

PROPRIETARY AND CONFIDENTIAL

REV. NO:	DESCRIPTION:	DATE:	BY:
2	Steam Dome Alteration	30/01/18	KK
1	CORRECTED CONNECTIONS	09/01/18	KK