

COO Creators
Of Objects



Creators of Objects

29 Connell Court, Unit 15
Etobicoke, Ontario
M8Z 5T7

info@creatorsofobjects.com
416.988.1462
creatorsofobjects.com
@creatorsofobjects

Photography by Creators of Objects unless noted.

Creators of Objects is the collaborative studio project of Jonathan deSwaaf and Joanne Byrne. At Creators of Objects we explore the connection between art and design to make beautiful objects that are as functional as they are sculptural. We create strangely familiar forms that are both futuristic and nostalgic. Decades of combined knowledge and experiences inform and guide our studio practice and the works we produce.

Experimenting with texture, tactility, transparency, tone, saturation, reflectivity, light transmission and a multitude of forms lead us to discover infinite relationships between shapes, colours and surfaces. Weight and structure interplay, and material quality invites you to touch.

Our collection includes production pieces of furniture and accessories and one-of-a-kind site specific works. All pieces are made one by one in our Toronto studio.

THE CREATORS

JOANNE BYRNE



JOANNE@CREATORSOFOBJECTS.COM

During my childhood I loved watching my grandmother paint in her seaside flat. We would find creative things to do together like smashing open slate rocks found on the banks of a local ravine to find the fossil treasures within.

A latchkey kid, I was out in the wild all day exploring nature and inventing fantastical stories while tucked away between the tall grass and trees. I have always been keen to experiment with found items and find new purposes for them.

The experimental arts program at art college led to even more discovery and new ways of viewing things, and then to studying industrial design to combine my love of art with designing objects.

There's just not enough time in one life to turn all the sketches into realities... but I'm going to try.

My education in Fine Arts, Anthropology and Industrial Design, has allowed me to weave my passions together, and to design and create never-before-seen things. I co-founded Creators of Objects to transform ideas into tactile things, to invent and construct, to surprise and delight.

Our studio creates sculptures that find purpose and interaction in the lives of humans. We want the pieces created here to be loved and valued by their end users and to be passed down through generations with a story.

JONATHAN DE SWAAF



JONATHAN@CREATORSOFOBJECTS.COM

THE STUDIO


This is our creative playground. A place where we conceive, design, prototype and produce unique pieces that delight, challenge norms, provoke curiosity, and a place to make never-before-seen objects that blur the lines between sculpture and furniture.

Our studio is continually evolving to meet the needs of current projects and ideas, filled with an array of tools, templates, moulds and raw materials. We are an organized laboratory for testing and problem-solving, and are ready to get messy when the project demands.

The studio is a small-scale factory for production of Creators of Objects collections of furniture and accessories as well as select custom contract pieces and collaborations.

It is an amazing experience to watch raw materials arrive, then leave, transformed into beautiful, one-of-a-kind pieces.



A collage of various resin samples. In the top left, a red semi-circle and a yellow rectangular piece. Below them, a large, textured, light green circular piece. To the right, a large, smooth, pinkish-red circular piece. In the center, several rectangular pieces of resin in shades of brown and orange, some with handwritten numbers like '420-93-5' and '110-08-8'. On the left, a large, textured, light blue rectangular piece. At the bottom, a dark green rectangular piece and a yellow circular piece.

Resin takes on any shape, texture and colour,
offering endless possibilities.

PROCESS

Every object we design and create begins with discussion, assessment and a plan. Our hands are our primary tool, assisted by templates, 3D models and renderings of sketches and concepts.

A variety of materials are used based on suitability for each specific piece and the requirements of each form we sculpt. Often an original prototype in finished form must be made in order to make our moulds.

Our pieces start with our hands and are finished by hand. In between, we find, adapt and utilize fabrication techniques to suit the production of that object. Our design aesthetic is to present forms that have been conceived and made with a human touch.

The objects we create are sculpted and shaped in a slow and meaningful way to arrive at the final design. We then go into production with technical precision tools, moulds and casting equipment. Each cast piece goes through a long and loving process of being finished by hand.

The result is a consistent product which at the same time is unique and beautiful.

We call this future analog.



TEXTURAL

A balance of textural and smooth surfaces
invites tactile interaction.



COLLECTION

GHOST WRITER



One of our first experiments with resin started here. Each home we visited would have stacks of art and design books displayed as accessories, so why not make them sculptural?

We took imprint moulds from linen bound books and cast them in various colours of tinted resin. The result was a curious ghostly object that is exciting to place on shelves or stack on tables.

The GHOST WRITER collection comprises six ghost books:

ATLAS, TOME, PICTURE BOOK, SKETCHBOOK, MEMOIR and TEXTBOOK.

These books were selected for their dimensions and cover textures. As a set they all stack together into a beautiful sculpture or stand alone as a single focal object.

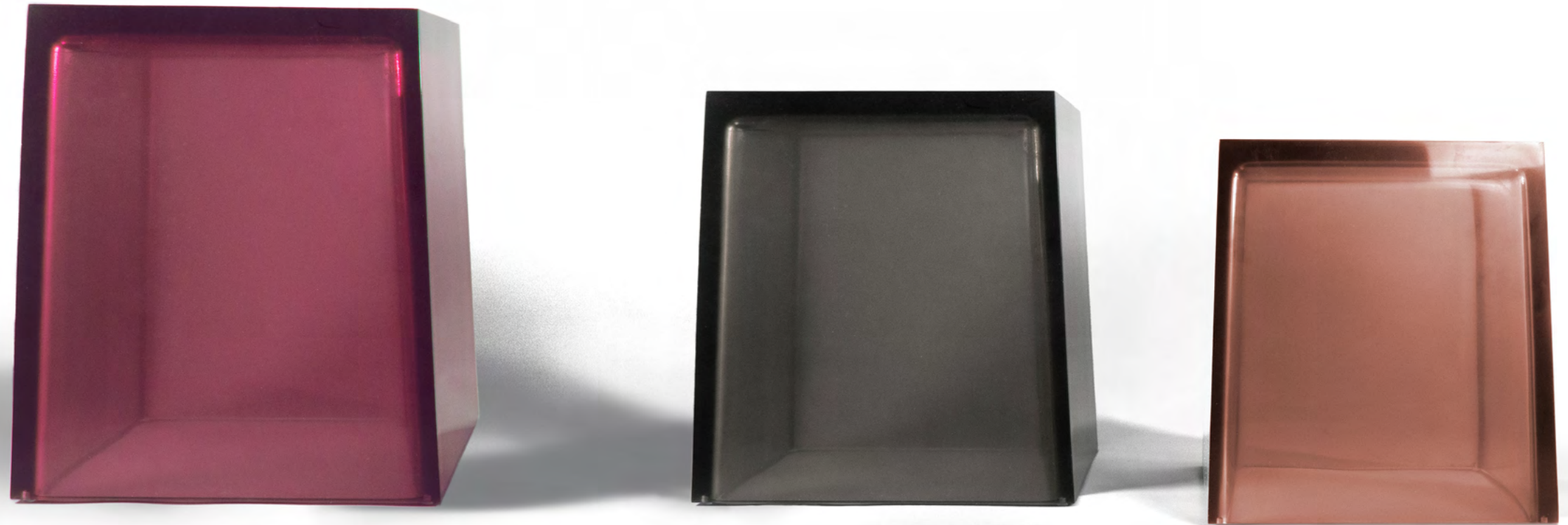


GAMMA TABLE

While playing around with vintage cameras from the 1970's, we were inspired by their flashcubes, a playful little form tragically designed for single use.

With the disposable flash as a departure point, we minimized and scaled up the shape to arrive at the GAMMA table.

This seamless table provides a beautiful splash of light diffusing colour in interior environments. Our version of a classic cube combines a slight upward taper with crisp exterior edges and rounded interior corners that capture a focused line of light. Offered in three different sizes. Perfect as side tables or groupings.





THE FORMS

FORMS are a set of playful, small architectural sculptures that can be grouped and stacked or sit as a lone focal object. We felt that a series of small resin pieces would be a fun way to explore the way light and colour are diffused through different shapes and at the same time make something that is pleasant to place in an environment.

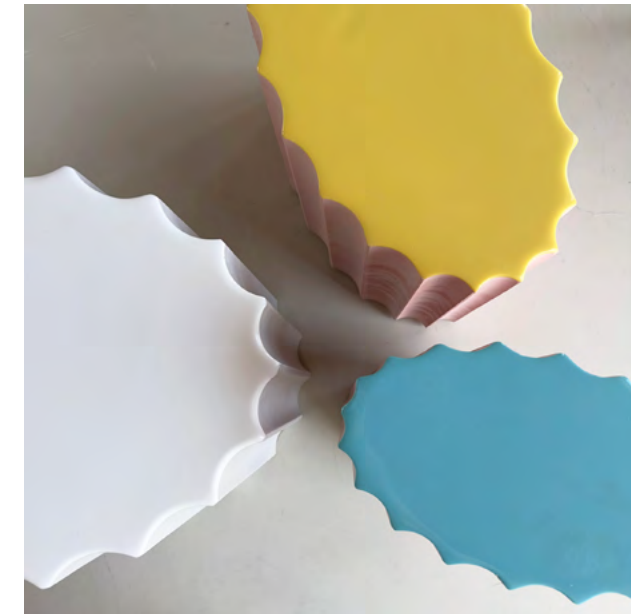
This is the perfect place to play on a small scale. New FORMS are continually added to this collection.





Photo by Margaret Mulligan

ION TABLES



Our own version of a classic form. This contemporary artifact is made with an additive process casting method using our own recipe of recycled glass powder and resin which gives the surface a subtle, sparkly quality.

With an oval footprint, the ION tables have a unique scaled fluting as they wrap around the shape. The addition of a solid, glossy, polished top of tinted resin adds a contrast of texture and colour. We make this table in three sizes and many colour combinations. ION is perfect as an accent table, or grouped to form an interesting coffee table.



Photo by Margaret Mulligan

SWEETSPOT CATCHALL

Candy for interiors.

Inspired by the iconic Rockets candy, we sculpted the SWEETSPOT catchall into a perfect circular form with a shallow bowl and beveled lower edge. The perfect target for easy to misplace items and treasured objects, fruit, candy or anything you need a spot for.





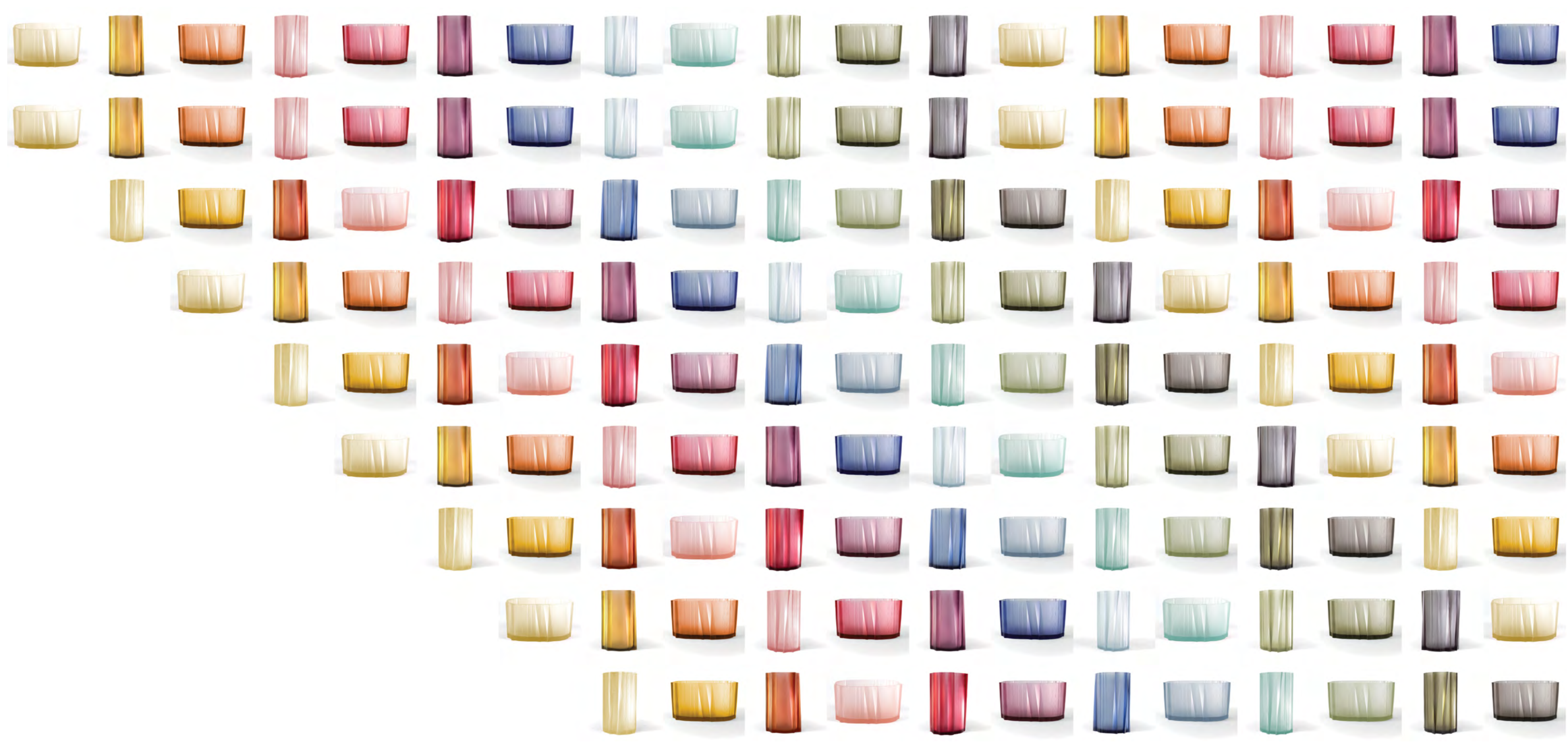
PAPER PLANES VESSELS

“My grandmother would make small sculptures from materials like packaging that were otherwise destined for the bin. She showed me that paper, used boxes, foil and fiber were building materials to sculpt into anything I wanted.”

– Joanne Byrne

Beginning as delicate paper sculptures created by bending and folding paper into peaks, bumps and creases, we take impression moulds which allow the cast resin piece to retain the soft, tactile surface of paper, resulting in a beautifully foggy exterior surface that bends and blurs light as it passes through the shaped outer forms. Reproducing the paper model in resin transforms the original fragile paper shapes into rigid usable vessels.





SCULPTURAL WALL ART

Art is an opportunity to be precise and also spontaneous. We explore moments and objects frozen in time and the impressions left behind. We create three dimensional snapshots and colourize them into modern artifacts.

Our studio offers a collection of bas relief and textured artwork for wall display. Each composition utilizes a range of topographies, techniques, recipes and ingredients including natural gypsums, recycled glass, fibre, precious metals, resin, silicone and pigments.







OORT TABLES

These smooth, rounded tables were inspired by the Oort Cloud — a theoretical cloud of icy planetesimals that encircle our solar system. We imagined these colourful objects being gently eroded over eons, as they travel amongst the cloud.

After a year of experimenting, we perfected our methodology to create these futuristic forms. OORT are created in our Toronto studio using the process of rotocasting where resin is added layer by layer from the inside with rotation to build up structure and colour depth, using as little material as possible. The process takes many days, and while the exterior forms are measured and polished, the interiors tell the story of its creation.

A universe captured in resin.





Dreams of outer space and the multitude of objects floating within its vastness, through intangible scales of time. Opportunity for any possible thing to occur, any shape in any size. If a perfect cube or cylinder were born into this nursery of infinite possibilities what would emerge over time?





CURATED

COLOUR



everything is
candy

