

Hospital Capacity System

Bed Configurator Training | June 2022

oregoncapacity.com

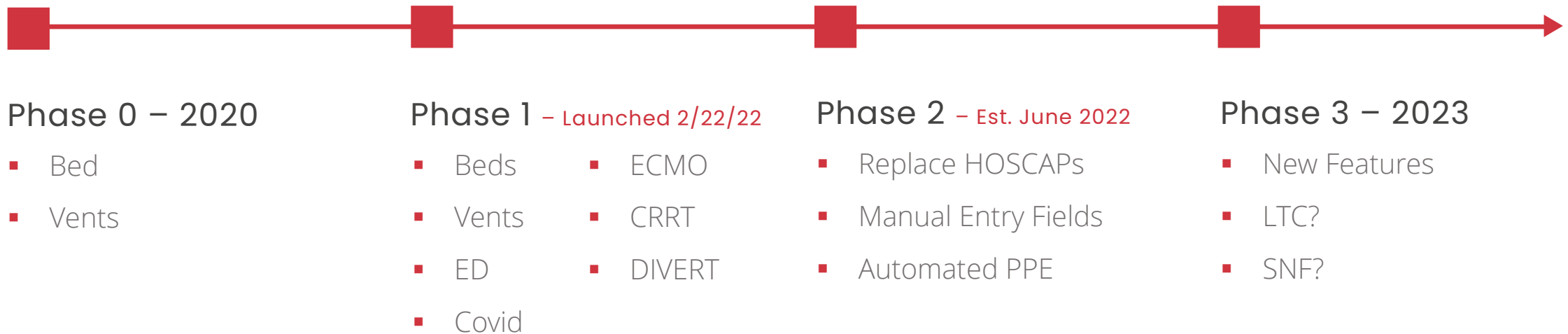


Agenda

- About Apprise & Relationship with OHA
- OCS Scope and Timeline
- Governance of OCS
- LIVE Bed Configurator Overview
- Coming Soon – June Release & Roadmap
- Upcoming Trainings

Project Scope

Develop a statewide capacity and critical resource system that will provide near-time actionable data to support better state-wide coordination and replace the state's current system



Oregon Steering Committee

Region 1

- OHSU Hospital
- Legacy Hospital
- Providence

Region 2

- Salem Health Hospital

Region 3

- PeaceHealth Sacred Heart Medical Center

Region 5

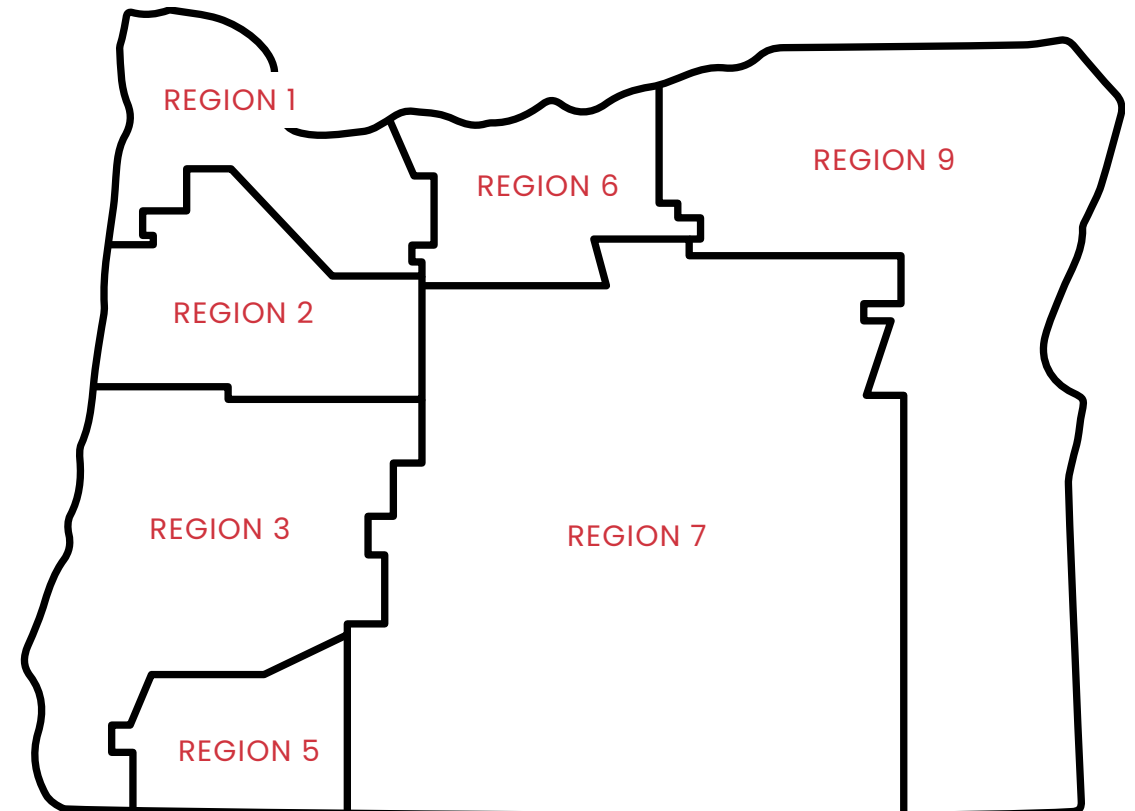
- Asante Rogue Regional

Region 7

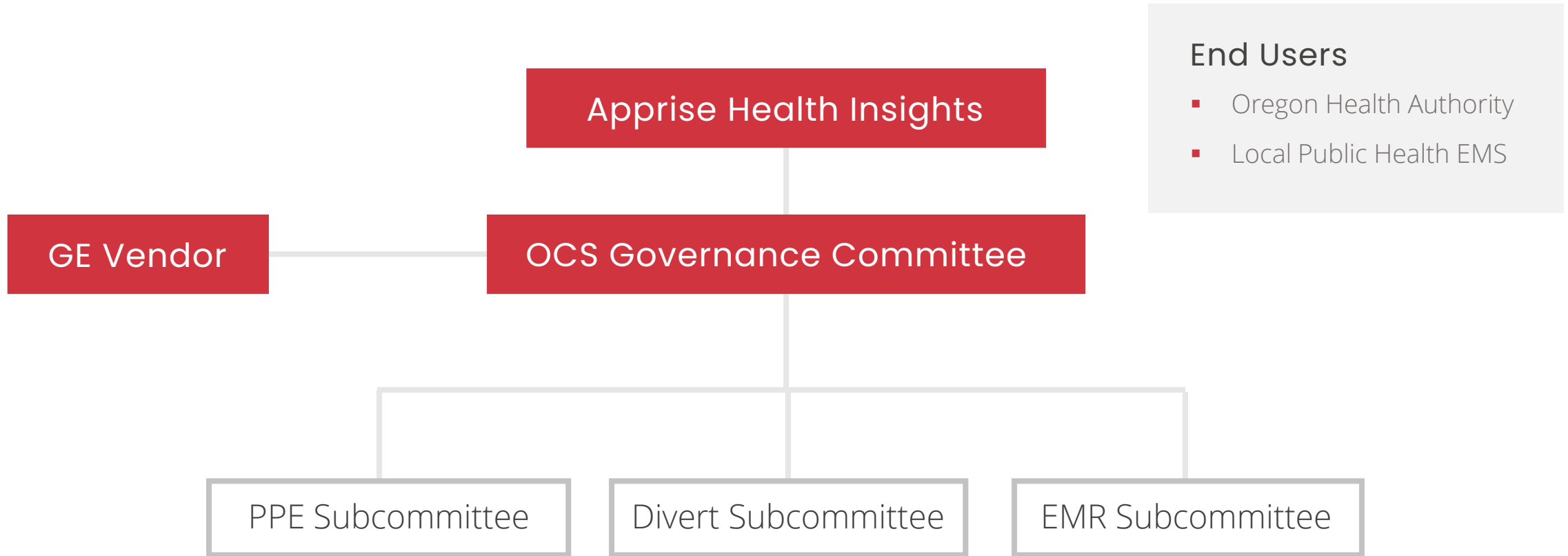
- St. Charles Medical Center

Region 9

- Grande Ronde Hospital



Governance



Live System Overview

oregoncapacity.com



Coming Soon

June Release

oregoncapacity.com



OCS Roadmap

OCS Version	Release Date	Item	Description	Funding
3.0	June 2022	Divert Feature	Column to display multiple divert categories as well as reasons for divert. Includes configurator for each system to enter when on divert.	Future 1
		PPE Module	Module displaying status of PPE across 12 categories. Includes manual PPE input tool as well as automated file submission option.	PPE
		New hierarchy for region 1	Additional hierarchy for region 1 specifically to group facilities by their sub-region within Portland.	Support
3.1	Q3 2022	Surge Status indicator	Alert icon to appear next to facility name to indicate if facility has any surge beds active. Potential to include two phases of surge beds active (white) and surge beds active and exceeding a specified occupancy (orange).	Future 2
		Updated Hallway Bed handling	Update OCS logic to always exclude hallway beds from capacity.	Support
		Manual Input Module	Module to manually track additional fields in OCS (e.g. legacy fields from HOSCAPs). Includes utility for admin users to add new fields for tracking.	Legacy Replacement
		Export to XLS	Ability for users to download snapshot of current data on tile into an excel spreadsheet.	Future 2

Trainings and Resources

- Resource Website: <https://oregoncapacity.com/training>
- June 13th or 14th Training: PPE Configurator
- June 14th or 15th Training: Divert Status & EMS View
- June 20th or 21st Training: Help Desk Process & FAQ
- June 27th or 28th Training: Open Forum Before GO LIVE

These webcasts are open to all OCS end users, and we encourage you to share this information with your team. In addition, we will record these trainings and make them available for future use. Additional trainings may be added.



View Only Access OCS

- Request View-Only Access Form

<https://oregoncapacity.com/request-ocs-access>

All accounts are organizational based accounts. Prior to our July launch we will move to individual accounts, and we will use this form as our first phase of creating individual accounts. In addition, access will only be given to current employees within hospitals, health systems, county, state and local municipalities, and EMS/911.



OCS User Levels

- Hospital OCS Primary Contacts: Onboarding Process
- Various Organizational Security Groups

Input Tool / Configurator	Purpose
Unit Capacity Configurator	Configure staffed bed capacity by unit Track inventory of vents, CCRT and ECMO Track activation and de-activation of surge beds
Divert Input Tool	Track hospital diversion status
PPE Input Tool	Track PPE inventory status
Manual Input Forms	Update various manual fields at the request of Apprise/OHA



Subscribe to OCS Notices



To join a specific user mailing list, please send an email from your work email account. Your email will be added to the distribution list accordingly. Please only subscribe to a distribution list directly related to your current place of employment. All requests will be reviewed, and you will receive a confirmation email once added.

If you are part of the following user group, send an email to...

- **EMS/911:**
OCS-EMS911-SUBSCRIBE-REQUEST@LIST.APPRISEHEALTHINSIGHTS.COM
- **COUNTIES:**
OCS-COUNTY-SUBSCRIBE-REQUEST@LIST.APPRISEHEALTHINSIGHTS.COM
- **HOSPITAL:**
OCS-HOSPITAL-SUBSCRIBE-REQUEST@LIST.APPRISEHEALTHINSIGHTS.COM
- **OHA:**
OCS-OHA-SUBSCRIBE-REQUEST@LIST.APPRISEHEALTHINSIGHTS.COM