

# Hospital Capacity System

*System Overview | January, 2023*

[oregoncapacity.com](http://oregoncapacity.com)



# Agenda

- About Apprise & Relationship with OHA
- OCS Scope and Timeline
- Governance of OCS
- Data Handling and Access
- LIVE Walkthrough of OCS
- Upcoming Trainings

# Apprise Background and Programs

## Data Collection

---

### INFOH

Hospital inpatient and outpatient discharge data (quarterly)

### AHA Survey

(annual)

### ★ Capacity System

(real-time)

### Databank

Utilization and financial data (monthly)

### Audited Financial Statements

(annual)

### Salary.com

Salary survey (annual)

## Data Purchases & Downloads

---

### Demographic Data

ACS & Claritas

### Alteryx Spatial

Geospatial data

### Healthcare Cost Report Information System (HCRIS)

Hospital Medicare cost reports downloads

### AHA Annual Survey

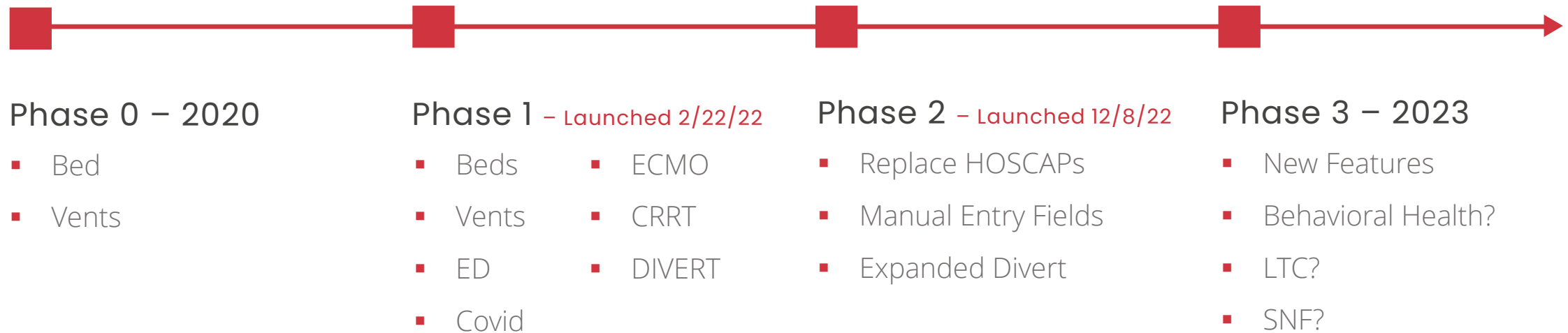
National comparison files downloads

### CMS/AHRQ Hospital Compare

Medicare certified hospital quality and cost data downloads

# Project Scope

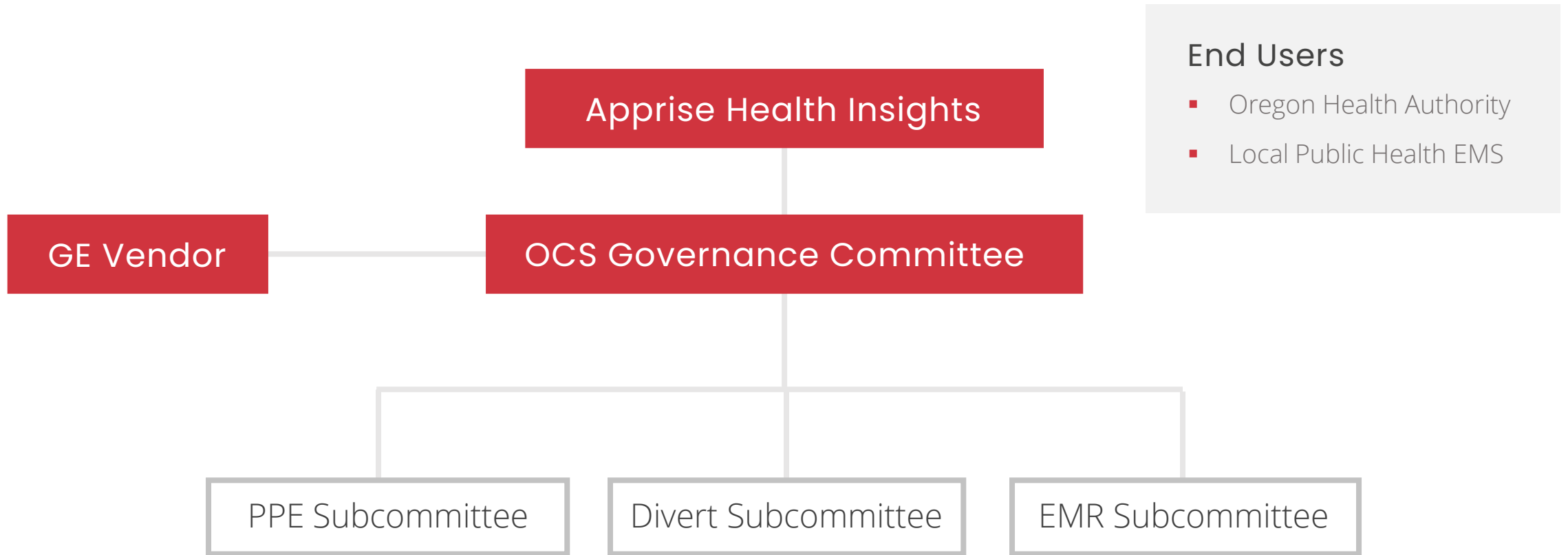
Develop a statewide capacity and critical resource system that will provide near-time actionable data to support better state-wide coordination and replace the state's current system



# Governance Principles

- Mission critical stakeholder table
- Policy development, consistency first
- Feature prioritization
- Decision making authority
- Agency and Private Sector Relationship Management
- Post-Launch oversight and evaluation

# Governance



# Governance Committee

## Region 1

- OHSU Hospital
- Legacy Hospital
- Providence

## Region 2

- Salem Health Hospital

## Region 3

- PeaceHealth Sacred Heart Medical Center

## Region 5

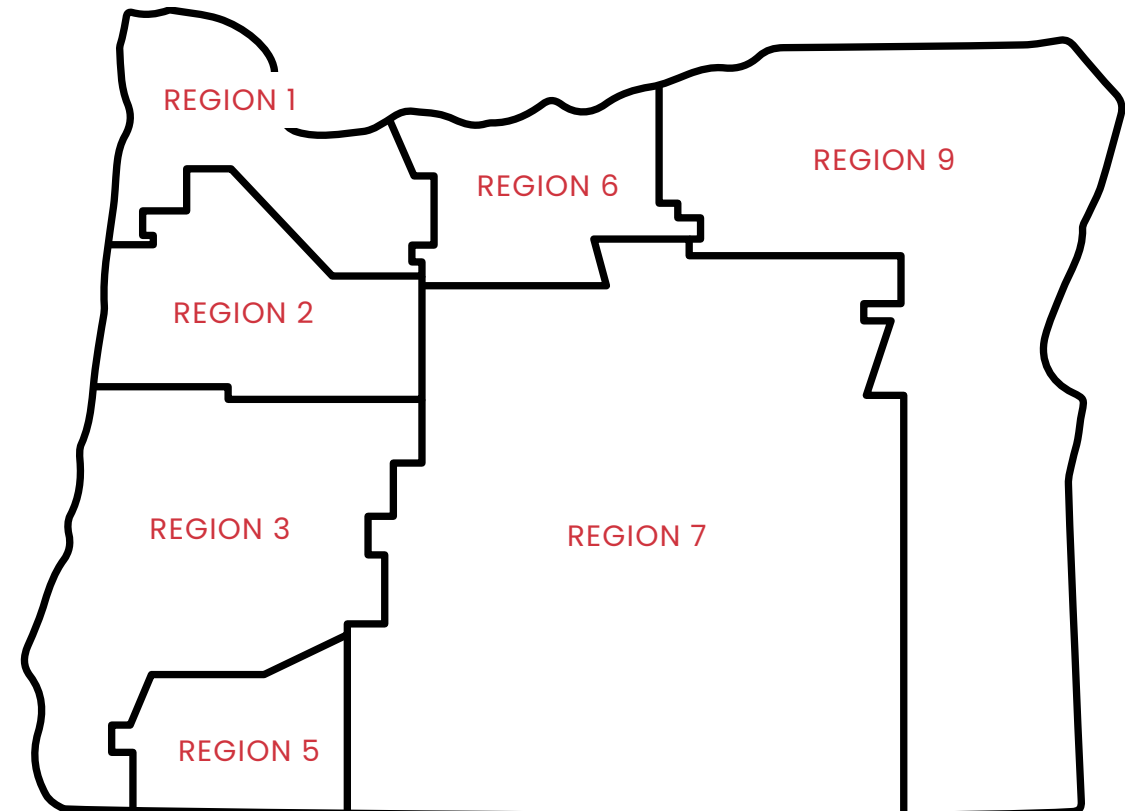
- Asante Rogue Regional

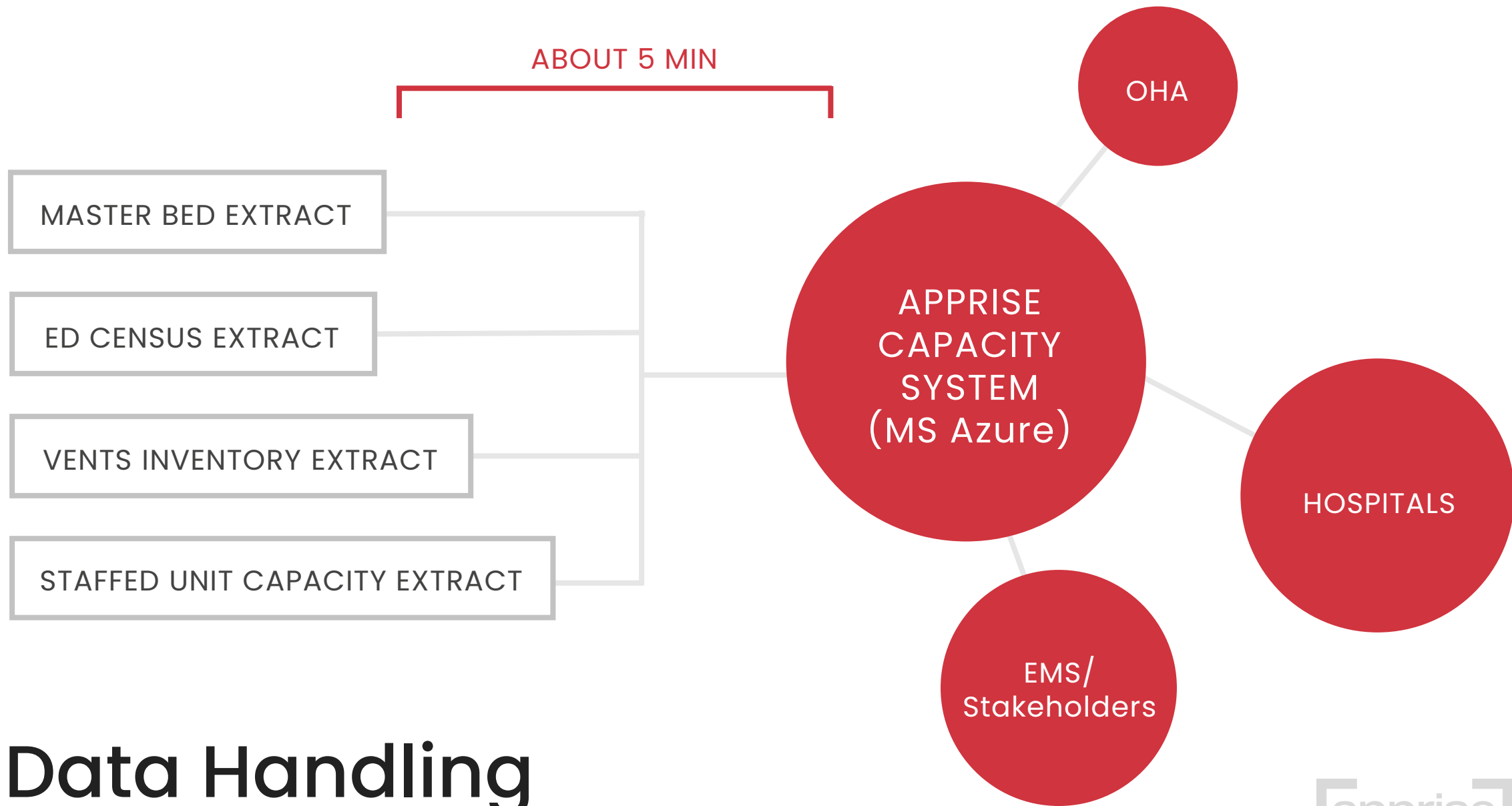
## Region 7

- St. Charles Medical Center

## Region 9

- Grande Ronde Hospital





# Data Handling



# Live System Overview

[oregon.hospitalcapacity.com](https://oregon.hospitalcapacity.com)



CONFIDENTIAL - NOT FOR DISTRIBUTION WITHOUT PERMISSION

OREGON			DIVERT	ALL BEDS	ADULT				PEDS			
Census	Unocc	Capacity		TOTAL	ICU	PCU	MT/MS	OBS	TOTAL	ICU	PCU	
<b>Total</b>				<b>5754</b> 75%	<b>4699</b> 81%	<b>574</b> 81%	<b>423</b> 88%	<b>3656</b> 80%	<b>46</b> 60%	<b>168</b> 57%	<b>20</b> 43%	<b>7</b> 70%
(16) R1: Portland			4 Alert(s)	<b>3369</b> 78%	<b>2580</b> 84%	<b>334</b> 85%	<b>105</b> 91%	<b>2099</b> 84%	<b>42</b> 65%	<b>145</b> 63%	<b>20</b> 43%	- 0%
(1) OHSU OHSU HEALTH			CT	<b>444</b> 73%	<b>366</b> 92%	<b>69</b> 108%	- 0%	<b>297</b> 89%	- 0%	- 0%	- 0%	- 0%
(1) OSV PROVIDENCE S... PROVIDENCE				<b>424</b> 86%	<b>316</b> 87%	<b>37</b> 95%	<b>23</b> 82%	<b>239</b> 86%	<b>17</b> 85%	<b>11</b> 55%	<b>1</b> 33%	- 0%
(1) OPH PROVIDENCE P... PROVIDENCE				<b>373</b> 83%	<b>282</b> 83%	<b>22</b> 110%	- 0%	<b>245</b> 83%	<b>15</b> 68%	- 0%	- 0%	- 0%
(1) SOUTHWEST MEDIC... PEACEHEALTH				<b>340</b> 85%	<b>329</b> 88%	<b>40</b> 80%	<b>23</b> 79%	<b>256</b> 90%	<b>10</b> 91%	<b>0</b> 0%	- 0%	- 0%
(1) SUNNYSIDE MEDICA... KAISER PERMANENTE NW				<b>250</b> 93%	<b>210</b> 93%	<b>30</b> 86%	<b>39</b> 100%	<b>141</b> 93%	- 0%	- 0%	- 0%	- 0%
(1) OHSU ADVENTIST P... OHSU HEALTH				<b>121</b> 55%	<b>118</b> 55%	<b>7</b> 88%	- 0%	<b>111</b> 53%	- 0%	- 0%	- 0%	- 0%
(1) LEGACY SALMON CR... LEGACY HEALTH				<b>187</b> 87%	<b>151</b> 95%	<b>12</b> 80%	- 0%	<b>139</b> 97%	- 0%	- 0%	- 0%	- 0%
(1) LEGACY EMANUEL ... LEGACY HEALTH			Evac	<b>194</b> 92%	<b>194</b> 98%	<b>34</b> 94%	- 0%	<b>160</b> 99%	- 0%	- 0%	- 0%	- 0%
(1) RANDALL CHILDREN... LEGACY HEALTH				<b>111</b> 58%	- 0%	- 0%	- 0%	- 0%	- 0%	<b>61</b> 56%	<b>9</b> 38%	- 0%
(1) OHSU HMC OHSU HEALTH				<b>86</b> 58%	<b>57</b> 84%	<b>4</b> 57%	<b>20</b> 100%	<b>33</b> 80%	- 0%	- 0%	- 0%	- 0%
(1) ST JOHN MEDICAL C... PEACEHEALTH				<b>98</b> 71%	<b>84</b> 67%	<b>11</b> 35%	- 0%	<b>73</b> 78%	- 0%	- 0%	- 0%	- 0%

**OREGON** | **AMBULANCE** | **TRAUMA** | **STEMI** | **STROKE** | **CT** | **LOCKDOWN** | **EVACUATION** | **COMMENT**

Region	Ambulance	Trauma	STEMI	Stroke	CT	Lockdown	Evacuation	Comment
Non-Region1 >								
R1: Central v					2 Alert(s)		1 Alert(s)	1 Alert(s)
OHSU OHSU HEALTH					9d 20h			
LEGACY EMANUEL ... LEGACY HEALTH							26d 22h	
RANDALL CHILDREN... LEGACY HEALTH								
LEGACY GOOD SAM... LEGACY HEALTH								
UNITY CENTER FOR ... LEGACY HEALTH								
OHSU DCH OHSU HEALTH					23d 22h			9d 20h
R1: Western v								
OSV PROVIDENCE S... PROVIDENCE								
OHSU HMC OHSU HEALTH								
LEGACY MERIDIAN P... LEGACY HEALTH								
WESTSIDE MEDICAL... KAISER PERMANENTE NW								

# SETTINGS



## PROFILE

- ★ Default
- Critical Warning
- Divert
- ...Create New

## DEFAULT PROFILE

## VIEW SETUP

### GEOGRAPHICAL GROUPING

Sub-Region 1

### COUNT DISPLAYED

Census

### COLUMNS DISPLAYED (FITS 11 WITHOUT SCROLLING)



### FILTER COLUMNS (1 Filter(s) Applied)



### EXPANDED SECTIONS (Read Only, Adjust On Tile)



## SORT BY

### SORTING

Default Display Order  ON  OFF

FIELD	SORT BY	ORDER BY
All Beds/All-Beds	Count	Ascending

## FILTER HOSPITALS

SAVE SETTINGS

DELETE

CANCEL

APPLY

# Questions?

- How do I submit a support ticket to Apprise?
  - <https://support.hospitalcapacity.com/support/tickets/new>
- What should I do if the data for my hospital appears incorrect on the dashboard?
  - Submit a support ticket above and our team will investigate a solution. It likely has to do with a change or error in the report extract. Additionally, you will want to check with the users at your facilities to see if any data changes were made manually in the configurator tools.
- How is the data on the dashboard being used to help operations and coordination?
  - Our partners at OHA/OEM are using the data for coordination and response as well as resource allocations. Additionally, the RRH use this data to understand the environment within their regions for coordination along with EMS partners. Also, as of 2020, the Oregon Medical Coordination Center (OMCC) has been using this information to help triage critical patient transfers.
- Since the data changes constantly, will we be able to access historical data for trending and reporting purposes?
  - Yes, there will be a companion system that users will be able to access historical data, up to 2 years of bed capacity data and unlimited divert data. Once this system is up and running we will host additional user trainings. This is currently in development.
- Can Apprise submit data to CDC/NHSN on my behalf, or do I still need to continue my current daily data submissions?
  - OCS is leading a national pilot with the OHA and CDC. We are using our experience with OCS to develop a daily feed to the CDC/NHSN for automated reporting. While a handful of facilities do this reporting through HOSCAP today, once the transition occurs, facilities will have to report separately to the CDC until this pilot is complete.

# Transition Date

**MARCH 31, 2023**

HOSCAP will fully transition to the OCS system. Over the next several of weeks, please inform your internal teams of this transition. You may need to review your internal processes prior to March 31.

***DIVERT: You can update divert status in OCS now, however it will not become the official divert notification system until March 31. Divert status will not be acted on within OCS until that time.***



# Trainings and Resources

- Resource Website: <https://oregoncapacity.com/training>
- Jan. 23 Training: Divert & EMS Overview
- Feb. 6 Training: Help Desk Process & FAQ
- Feb. 27 Training: User Accounts & Security Groups
- March 20 Training: Open Forum Before GO LIVE

*These webcasts are open to all OCS end users, and we encourage you to share this information with your team. In addition, we will record these trainings and make them available for future use. Additional trainings may be added.*



# Access OCS

- Request Access Form

<https://oregoncapacity.com/request-ocs-access>

All accounts are organizational based accounts.

Access will be for view only accounts

Prior to March 31, we will rollout new security group-based accounts to hospital primary contacts for data editing

In addition, access will only be given to current employees within hospitals, health systems, county, state and local municipalities, and EMS/911.





# Subscribe to OCS Notices



To join a specific user mailing list, please send an email from your work email account. Your email will be added to the distribution list accordingly. Please only subscribe to a distribution list directly related to your current place of employment. All requests will be reviewed, and you will receive a confirmation email once added.

If you are part of the following user group, send an email to...

- **EMS/911:**  
[OCS-EMS911-SUBSCRIBE-REQUEST@LIST.APPRISEHEALTHINSIGHTS.COM](mailto:OCS-EMS911-SUBSCRIBE-REQUEST@LIST.APPRISEHEALTHINSIGHTS.COM)
- **COUNTIES:**  
[OCS-COUNTY-SUBSCRIBE-REQUEST@LIST.APPRISEHEALTHINSIGHTS.COM](mailto:OCS-COUNTY-SUBSCRIBE-REQUEST@LIST.APPRISEHEALTHINSIGHTS.COM)
- **HOSPITAL:**  
[OCS-HOSPITAL-SUBSCRIBE-REQUEST@LIST.APPRISEHEALTHINSIGHTS.COM](mailto:OCS-HOSPITAL-SUBSCRIBE-REQUEST@LIST.APPRISEHEALTHINSIGHTS.COM)
- **OHA:**  
[OCS-OHA-SUBSCRIBE-REQUEST@LIST.APPRISEHEALTHINSIGHTS.COM](mailto:OCS-OHA-SUBSCRIBE-REQUEST@LIST.APPRISEHEALTHINSIGHTS.COM)