



FISKER
CUSTOMS & LOGISTICS



Spring is Near

Thaw period Canada 2023:

Winter is still in full swing, but people are already looking at the Spring season. In Canada, the so-called “Spring Thaw Period” has been announced for the period from 15 March to the end of May 2023. During this period, the ice melts and roads will be extra weak, causing problems with transit from ports to domestic destinations in the country. As a result, Canadian authorities determine a period every year when less weight can be transported. Our professional team of associates are here to assist you.

Sylvia Beck, Inside Sales Coordinator

IN REVIEW | FEBRUARY 2022

MARINE

February 1 | **“Vancouver Port Moves a Step Closer to Getting a New Terminal.”**

Steven Guilbeault, Canada’s minister of environment and climate change, informed the Vancouver Fraser Port Authority (VFPA) last week of his determination that information provided by the VFPA has satisfied a request for additional details regarding potential effects of the proposed Roberts Bank Terminal 2 project on fish and fish habitat, salinity, and Indigenous people.

“As a result,” wrote the minister in a letter to the VFPA dated January 23, “the federal timeline for the issuance of a decision statement for the Roberts Bank Terminal 2 Project will resume as of today.”

According to a press release from the VFPA, “the additional information provided by the port authority ... further demonstrated the project could be completed in an environmentally responsible manner.”

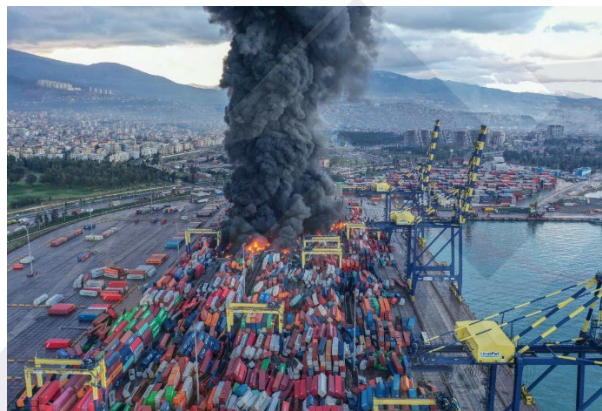
The project will now move, noted the VFPA, to the final stage of the federal environmental assessment process, which started in 2013. *Source: [Splash 247.com](#)*

February 7 | “Earthquake Rattles Turkish Ports.”

A number of ports are still out of action in Türkiye more than 24 hours after the southeast of the nation was rocked by a massive earthquake which has killed more than 4,300 people.

Iskenderun, a major port on the Mediterranean, suffered structural damage, as well as a severe blaze as containers caught fire yesterday. Aerial images show box stacks collapsed across the port, and a blaze in the middle of a container yard, which spread fast.

“The port has unfortunately been subject to severe structural damage, leading to a complete stop of all operations until further notice. Roads have also been heavily affected, and at this time vendors are not moving any trucks in and around the area,” an update from Danish carrier Maersk stated. *Source: Splash 247.com*



February 8 | “Iskenderun Port Decimated – Update to Earthquake in Turkish Ports”

Despite combined aerial and sea efforts, the blaze at Iskenderun Port is ongoing.

Turkey’s air force was deployed yesterday to try and douse the blaze at the wrecked container terminal, but the fire continues to rage this morning.

The fire along with the severe structural damage at the port is expected to result in insurance claims running to hundreds of millions of dollars in what is likely to be the largest port desecration since the explosions registered in Beirut in 2020.

Liners are rerouting ships to alternative ports in the eastern Mediterranean with the port expected to be out of action for months.

Many container stacks toppled over at Iskenderun when the earthquake hit on Monday morning sparking the fire, which then spread rapidly. *Source: Splash 247.com*

February 15 | “Opening Date of Great Lakes-St. Lawrence Seaway 2023 Navigation Season.”

The opening date for the 2023 navigation season is scheduled to take place as follows:

- Montreal / Lake Ontario Section: March 22 – 0800 hours
- Welland Canal: March 22 – 0800 hours

Ship transits will be subject to weather and ice conditions. Restrictions may apply in some areas until lighted navigation aids have been installed. Find more details in this [Seaway notice](#). *Source: CIFFA*

February 15 | “Transport Workers’ Strike Freezes Vessel and Port Operations in Finland.”

Finnish Transport Workers' Union, Auto-ja Kjetusala Työntekijäliitto (AKT), commenced its strike action on 15 February at 06:00 am (local time) impacting all ports and terminals of the country.

The strike that started earlier today will last until further notice with all vessel operations in Finland's ports, gate moves and handling of containers within terminals having been suspended until further notice. *Source: Container News*

February 15 | “Top Carriers Join Forces to Investigate Scourge of Fires at Sea.”

Some of the world's biggest carriers are joining forces with the world's first industrial safety technology accelerator to launch a new innovation initiative to reduce cargo loss at sea.

Evergreen Line, HMM, Maersk, the Offen Group, Ocean Network Express (ONE) and Seaspan, as well as Lloyd's Register, will work with Safetytech Accelerator to find and advance technology innovations from across maritime and other industrial sectors to reduce the incidence and impact of cargo fires or cargo loss overboard.

The scale and breadth of the challenges facing operators is growing and continues to evolve. These include the increasing carriage of lithium-ion batteries either in containers or within electric vehicles on car-carriers and the increasing growth in complexity and size of modern container vessels.

The Safetytech Accelerator Cargo Fire & Loss Innovation Initiative (CFLII) is a collaborative technology acceleration program that will help tackle the issue through shaping joint requirements, identifying technology solutions, undertaking carefully designed trials and developing best practices and recommendations. *Source: CIFFA*

AIR

February 17 | “German Cargo Operations Set to Be Hit by Airport Strikes on Friday”

Airport workers at major hubs in Germany are on February 17 set to take part in a day-long strike causing disruption to airline operations. The strikes organized by the Ver.di union will start in the early hours of the morning and end Friday night at seven airports: Frankfurt Main, Munich Stuttgart, Hamburg, Dortmund, Hannover, and Bremen.

The strikes include public sector workers and ground handlers.

Frankfurt Airport said that operations will be heavily disrupted throughout the day. Munich Airport said flights would be “massively disrupted.”

Read more in an [article from Air Cargo News](#). *Source: CIFFA*

ROAD / RAIL

February 15 | “CN Customer News: Train Length Restrictions in Parts of the Network”

Severe cold and high snowfall present challenging conditions to safe railway operations, primarily to the braking system. As part of CN’s winter operating plan, when temperatures fall below -25C, train length is restricted following a tiered system to ensure safe operations. *Source: CIFFA*



TIER LEVEL	TEMPERATURE		CONVENTIONAL	A – DP (1x1x0)		B – DP (1x0x1)
	°C	°F		HEAD TO MID	MID TO END	HEAD TO END
Intermodal and Single Commodity Bulk Trains						
Tier 1	-25	-13	8,000	8,000	4,000	12,000
Tier 2	-31	-24	6,000	5,667	2,833	8,500
Tier 3	-36 or lower	-33 or lower	4,500	4,500	2,200	6,700

CUSTOMS

February 13 | “Minister of Transport Announces a New Call for Proposals to Support Projects that will Strengthen our Supply Chains Through the Digitalization of Infrastructure.”

The Government of Canada is committed to ensuring that our supply chains are efficient and reliable to help create even more good middle-class jobs and help build an economy that works for everyone, as well as to ensure that Canadians have timely access to affordable goods. To achieve this, digitalization plays an important role in improving the efficiency of our supply chains.

Today, the Minister of Transport, the Honourable Omar Alghabra, announced the launch of a new call for proposals, under the National Trade Corridors Fund, which is called **Advancing Supply Chain Digitalization**. Transport Canada will commit up to \$50 million to support eligible projects.

Under the new call, Transport Canada is seeking industry-led projects that strengthen Canada's digital infrastructure. Projects supported will:

- increase the efficiency and reliability of our transportation supply chains
- relieve bottlenecks
- ensure Canadians have access to all the affordable products and goods that they need
- and help develop digital solutions and optimize Canada's supply chain.

Applicants are invited to submit a to Transport Canada by April 11, 2023, at 17:00 Eastern Standard Time, through the National Trade Corridors Fund online application portal.

This new call for proposals is one of many actions being undertaken under the broader \$136 million Advancing Industry-Driven Digitalization of Canada's Supply Chain initiative, which aims to develop digital solutions to optimize and strengthen Canada's supply chains. *Source:* [CSCB Full Article here](#)

February 17 | US CBP – Customs Broker Modernization Regulations

US Customs Border Protection has updated certain regulations relating to US Importers (including non-resident importers based outside of USA), and US customs brokers.

As of February 17, 2023, brokers holding powers of attorney (POA) for active clients must satisfy the requirements identified in the Modernization of the Customs Broker Regulations Final Rule (87 FR 63267) under 19 CFR 111.36(c)(3). US Brokers will ensure that a POA has been directly executed with an importer of record or drawback claimant (client), and not through a freight forwarder or other (unlicensed) third party, in order to transact customs business for the client.

Further information is available on [CBP's website here](#).

February 19 | Getting Ready for CARM Release 2 (October 2023)

CBSA continues monthly webinars on the topic of CARM, to help guide importers and the trade community with the necessary onboarding and preparation for a major systematic change coming in October 2023.

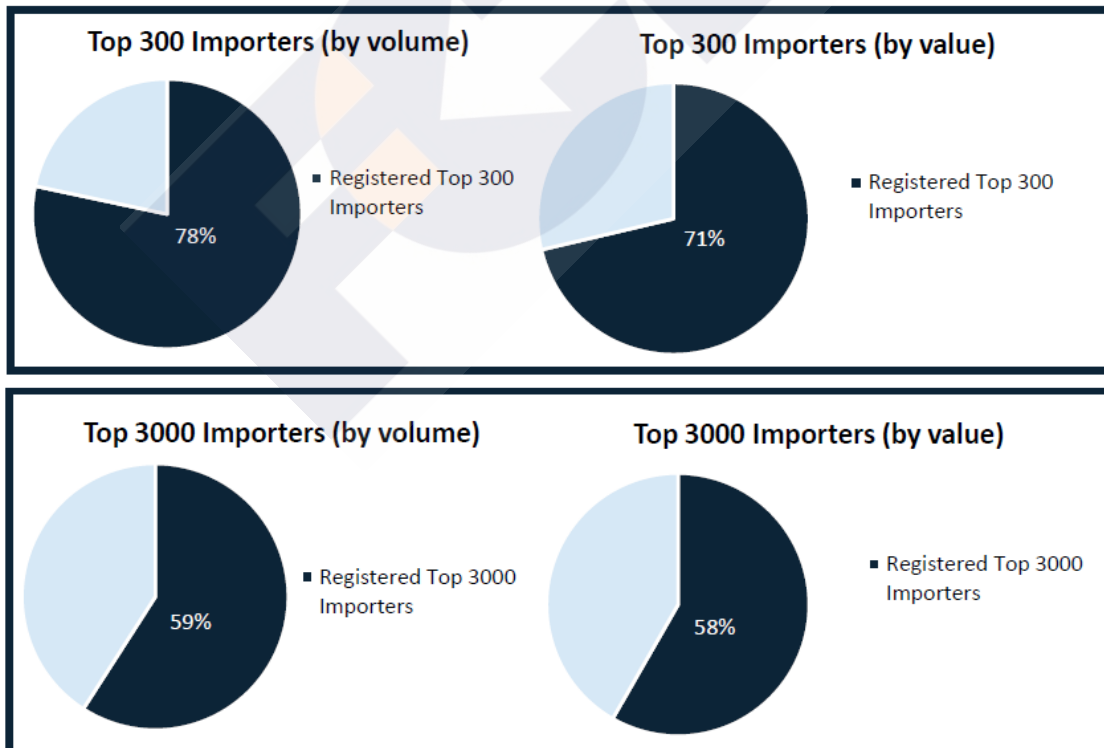
Known as “CARM Release 2”, Importer registration in the CARM Client Portal (CCP) will be essential, in order to be able to process a release request of imported goods with CBSA. Importers will be required to register, establish financial security in relation to future commercial importations, connect with their customs broker and trade advisors in the CCP, in order to continue doing business with CBSA. If you are an importer, and have not yet registered, we strongly recommend that you do so soonest, and consider your security options well in advance of CARM Release 2.

Upcoming CBSA Hosted Webinar: What you need to know with CARM Release 2

Wednesday, March 29th, 2023	1:00pm – 2:30pm EST	Link to Register
-----------------------------	---------------------	----------------------------------

The latest CARM onboarding stats of importers, were published by CBSA in mid-February:

Importers – CARM Client Portal Onboarding Status



Updated January 31st, 2023

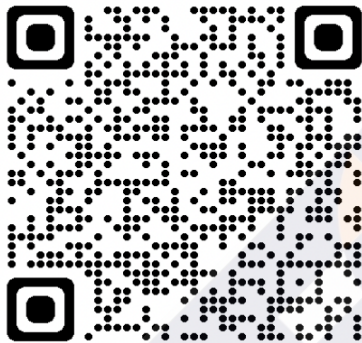
CARM reference materials:

CARM materials, including webinar recordings, can be accessed on CBSA's [CARM Google Drive](#). Additional support materials are available in the [Onboarding Documentation](#) section of the portal.

For more information:

- Visit the [CARM section of the CBSA website](#)
- Visit the [CARM Client Portal](#) and [Onboarding Documentation](#) section for support documents.
- Visit the [CARM Google Drive](#) for additional resources
- Visit CBSA's YouTube Channel – [CARM video tutorials playlist](#)
- Join the email distribution list by emailing [CBSA.CARM_Engagement-Engagement de la GCRA.ASFC@cbsa-asfc.gc.ca](mailto:CBSA.CARM_Engagement-Engagement_de_la_GCRA.ASFC@cbsa-asfc.gc.ca) and the [CARM LinkedIn Group](#) for the latest news
- Questions? Email: [CBSA.CARM_Engagement-Engagement de la GCRA.ASFC@cbsa-asfc.gc.ca](mailto:CBSA.CARM_Engagement-Engagement_de_la_GCRA.ASFC@cbsa-asfc.gc.ca)

CARM QR Code (CBSA reference)



If you need support, please contact the CARM Client Support Helpdesk by web form (<https://www.cbsa-asfc.gc.ca/contact/csform-formulairesc-eng.html>) or by telephone (1-800-461-9999, Menu option #2)

For more information on CARM, please view the [CARM section of the CBSA website](#).

For inquiries about Customs News Articles contact:
Christina Fisker, VP Customs & Compliance: christina@fisker.ca

You are receiving this newsletter as a client of FCL Fisker. To manage your subscription, please reply to sylvia@fisker.ca