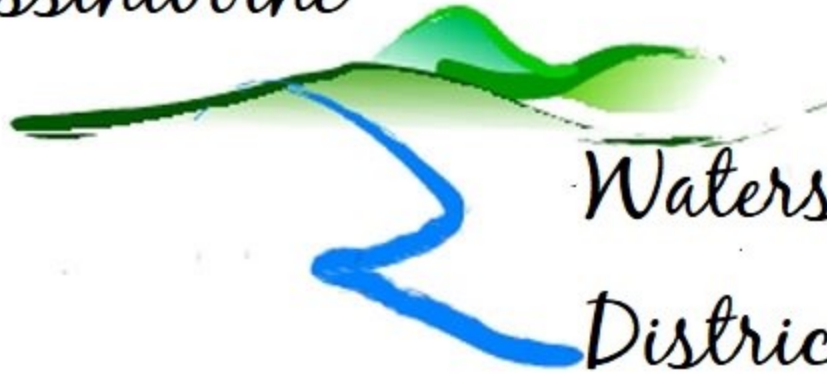
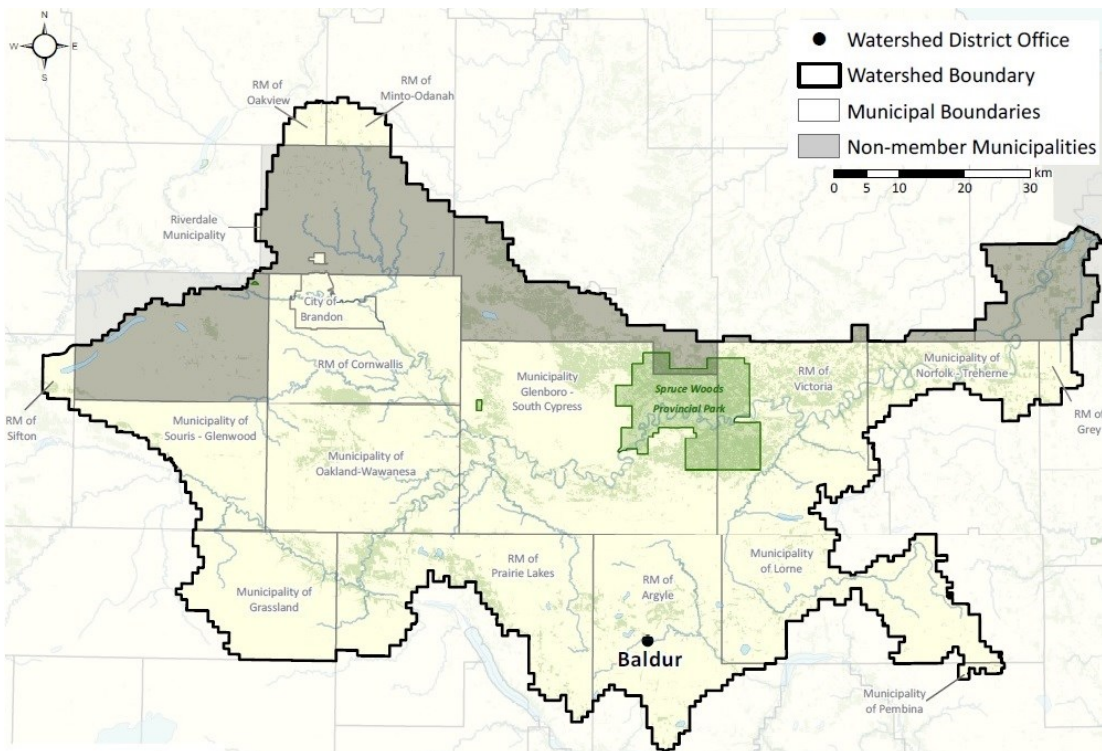


Central  
Assiniboine



Watershed  
District

# New Name, New Partners, New Boundaries!



Shaded municipalities are possible future expansion members of Watershed District.

## Who We Are-What We Do

We are a grassroots organization made of municipal appointed members that strives towards soil and water management. We complete such as water management, grassed waterways, riparian management, upland management, erosion control, perennial cover, and shelter-belt projects. Give a call for any of your soil or watershed management issues.

### In Partnership with the Municipalities of:

Argyle, Cornwallis, Glenboro-South Cypress, Grassland, Grey, Lorne, Minto-Odanah, Norfolk-Treherne, Oakland-Wawanesa, Oakview, Pembina, Prairie Lakes, Riverdale, Sifton, Souris-Glenwood, Victoria, City of Brandon and



## 2020-21 Board by Sub-District

Jeff Elder—Chair

Jack Bolack—Vice Chair

Paul Gaultier—Lower Assiniboine

Myles Kubinec—Cypress River

Heather Dalglish—Epinette/Willow

Hugh Stephenson –Oak Creek

Ken Turner—Souris River

Ted Snure—City of Brandon

Walter Finlay—Little Souris

### HISTORY

The district began in 2001, as Tiger Hills Conservation District in partnership with the municipalities of Argyle, Strathcona, South Cypress, Glenwood, the town of Wawanesa and the Village of Glenboro and the Province of Manitoba.

In 2008 The district re-branded and expanded under the name Assiniboine Hills Conservation District. It comprised of 5,802 kms and had a rural population of 14,204. Partners expanded to include the Municipalities of: *Cornwallis, Grassland, Prairie Lakes, Oakland—Wawanesa, The City of Brandon*

*Fast forward to 2020 and the introduction of the new Watershed Districts. Central Assiniboine Watershed Districts partners now include portions of the municipalities of Grey, Lorne, Minto-Odanah, Norfolk-Treherne, Oakview, Pembina, Riverdale, Sifton, Victoria, and the Province of Manitoba.*

### Assiniboine Water Quality Fund:

The Assiniboine Water Quality is a pot of money that the main board of the Central Assiniboine Watershed District allocates to special projects along the Assiniboine River. The focus of the projects is to improve water quality within the Assiniboine River either upstream or below the City of Brandon. To date the fund has helped complete projects such as small dams, buffer strip land use change, exclusion fencing and off site watering. All these project help reduce nutrients and sediment loading within the Assiniboine River improving river health as it moves through the Central Assiniboine Watershed to the City of Winnipeg before emptying into the Red River.

**\*ALL projects, programs and rebates are pending funding availability and Program Finalization**

**PROGRAMS:****Well Capping**

To maintain present groundwater quality and the removal of hazards to people and livestock. AHCD will cap your well at **'NO CHARGE'**

**Shock Chlorination**

AHCD can shock chlorinate wells using provincial and federal guidelines for \$50 per well, all inclusive. Only available May—October When weather allows.

**BEAVER LEVELLERS:**

50/50 cost share to a maximum of \$1000 and technical assistance for installation of levelers.

**\*\*All requested documentation is required and must be dated within calendar year.**

**REBATES:****Forage Seed Assistance**

Provide financial assistance of \$20 per acre, maximum of 25 acres. *\*\* Epinette/Willow Creek Sub District \$30 per acre, maximum 50 acres. \*\**

**WELL ESTABLISHMENT**

50% of cost to a max of \$1,000 for water supply establishment. (1 time only incentive)

**Fencing**

Financial assistance dependent on project scope.

**Well Head Remediation**

Provide financial assistance of 50%, up to \$500 for costs incurred in upgrading wellheads, removing old pumps and associated materials.

**Trees/Shelterbelts Mulch**

50% of cost of mulch, up to \$500. (Epinette/Willow Subdistrict only) 50% cost share for trees up to \$1500 for 2-10 acre lots; up to \$3,000 for holdings over 10 acres in size

**Shelterbelt**

Contact the office for info on ordering trees.

**PROJECT EXAMPLES INCLUDE:****Alternative Watering Systems:**

Provides financial assistance based on individual merit of project and its benefit to watershed health.

**Livestock Crossings:**

Equipment and cattle crossings

**Grass Waterways:**

Natural or constructed channels used to prevent soil loss and protect water quality.

**Water Management:**

Multipurpose structures for livestock watering, wildlife, flood control.

**Erosion Control:**

To reduce the effects of erosion caused by flowing water.

**Conservation of Class 1 & 2 Wetlands**

Rental payments can be paid to conserving wetlands at 10 year contract lengths.

**Call the office for details.**

**GROW & CONSERVATION TRUST**

Funds generated through a trust fund set up by the Province of Manitoba is allocated to on the ground projects that fit in the following categories.

- ⇒ - Wetland Conservation, Enhancement, Restoration
- ⇒ - Water Retention
- ⇒ - Riparian Area Management (including exclusion fencing and Alternate Watering Systems)
- ⇒ - Buffer Establishment (shelterbelts, multi species buffer strips)
- ⇒ - Upland Area Conservation, Enhancement, Restoration
- ⇒ - Innovation and Conservation Planning
- ⇒ - Connecting People to Nature
- ⇒ - Habitat and Wildlife
- ⇒ - Soil Health

For information on accessing Trust Fund dollars please call

**EQUIPMENT RENTALS:**

**\*\*Staff will be available on a limited basis to assist with equipment delivery, setup and operation. Please inquire for details.\*\***

**Trees Planter**

CAWDD can provide use of a tree planter at the cost of \$50 per day.

**Mulch Applicator:**

Mulch applicator rental is \$50 per day.

**Off-Site Watering Trial**

A solar powered water trough is available for a two week trial period. Trough comes fully equipped and will be delivered and set up by staff. Cost \$100 refundable damage deposit.

**Grass Seeder:**

Quad attached seeder—\$50 refundable damage deposit—maximum of 5 days.

---

## LANDSCAPE CHANGES COME INTO FOCUS WITH WATERSHED CONSERVATION FUNDING

**Baldur, MB** (July 24, 2020) Nearly 2,000 acres of previously vulnerable wetlands, grasslands and riparian areas will be conserved, restored and enhanced on targeted lands by the Central Assiniboine Watershed District (CAWD) as a result of a successful project pitch to a first-year provincial funding trust.

Major funding for the first year of Growing Outcomes in Watersheds (GROW) was announced by the Province of Manitoba yesterday, including more than \$5.6 million for 20 conservation projects, 16 of which will be funded by the new GROW Trust. Manitoba's watershed districts are partnering with farmers to "farm the best, conserve the rest" supported by annual incentive payments from the GROW Trust.

CAWD is receiving a total of \$500,000 for their project "*Farming the Best - Conserving the Rest within the Central Assiniboine Watershed District*". Support for this project has been provided through the GROW Trust which is part of the Manitoba Climate and Green Plan Initiatives, endowed with The Winnipeg Foundation and administered by Manitoba Habitat Heritage Corporation through a competitive annual granting process. Jeff Elder, CAWD board chair and producer in the Wawanesa area, says he is excited to see the program roll out and the opportunities it will provide for producers within the Watershed District. Producers such as Elder are exactly what the Province had in mind when it designed the funding structure.

"Watershed management is an important part of our *Made-in-Manitoba Climate and Green Plan*," said Agriculture and Resource Development Minister Blaine Pedersen. "Local expertise, the commitment of landowners and the support of our partners will help ensure these projects protect our water quality, sustainably manage our natural resources and leave a sustainable legacy for all Manitobans to enjoy."

The CAWD had to secure funds and in-kind work within their own organization as well as partners and landowners to land the project to be eligible for the GROW Trust funding. Zalluski says the GROW Trust funding will support annual payments to producers for practices on their land that benefit the overall health of the watershed and provide ecological goods and services such as improved water quality, flood and drought resilience and biodiversity back to society.

"The landscape changes within the Central Assiniboine Watershed District pose a number of challenges that range from water quality and quantity issues, to the clearing of sensitive lands for farm production," says Neil Zalluski, CAWD manager, adding that the start date for the program was officially June 19, 2020. "Areas that are experiencing severe erosion and cover loss pose a risk to the watershed in a number of ways and the impacts of doing nothing are compounded each year."

### CONTACT INFORMATION:

Phone: (204) 535-2139

Toll Free:  
1-877-535-2139

Cell Phones:  
Manager—204-825-7410  
Technician—204-245-0076

Fax: (204) 535-2215

Email:  
cawd@mymts.net

[www.centralassiniboine.wd.ca](http://www.centralassiniboine.wd.ca)



Water Management Project