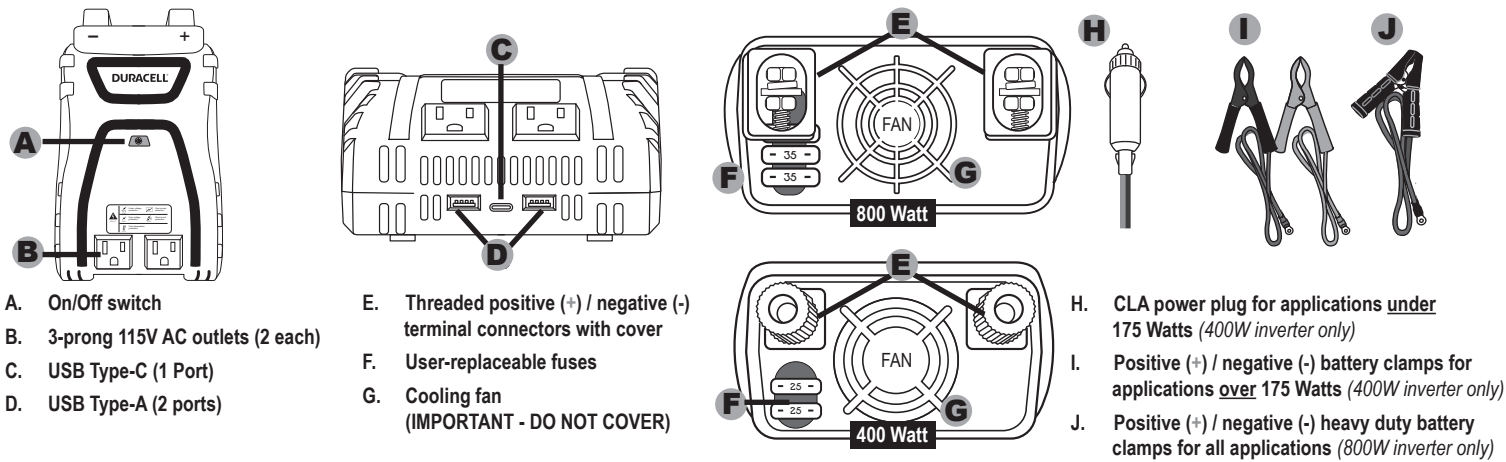


DURACELL® 400 Watt/800 Watt High Power Inverters

User Guide

Product Details



Getting Started

⚠ BEFORE YOU START: See Safety information section for important precautions. Failure to follow these instructions can damage the unit and could also result in personal injury. Sealed Lead Acid batteries have many hazards like high current, gases and acids. Please exercise caution. To avoid excess battery drain, turn the inverter OFF / disconnect after use.

The inverter converts 12 VDC to 115 VAC with a modified sine wave. The modified sine wave output is suitable for most devices, but may not work with some devices that require a pure sine wave.

Make sure that the total power consumption of the connected devices is less than the rating of the inverter. Although the inverter can provide high surge power up to two times the rated output power, some appliances may still trigger the inverter's protection system.

* ⚠ WARNING: Reverse Input

Please ensure that the **red** ring terminal and/or clamp on your input cable connects to the **positive (+)** terminal on both your battery and the inverter. The **black** ring terminal and/or clamp connects to the **negative (-)** terminal on the battery and inverter.

Reverse input will blow the fuse and disable the unit. Replace fuses if this occurs; replacement fuses are located in the back of the inverter unit.

⚠ WARNING: CLA Power Plug

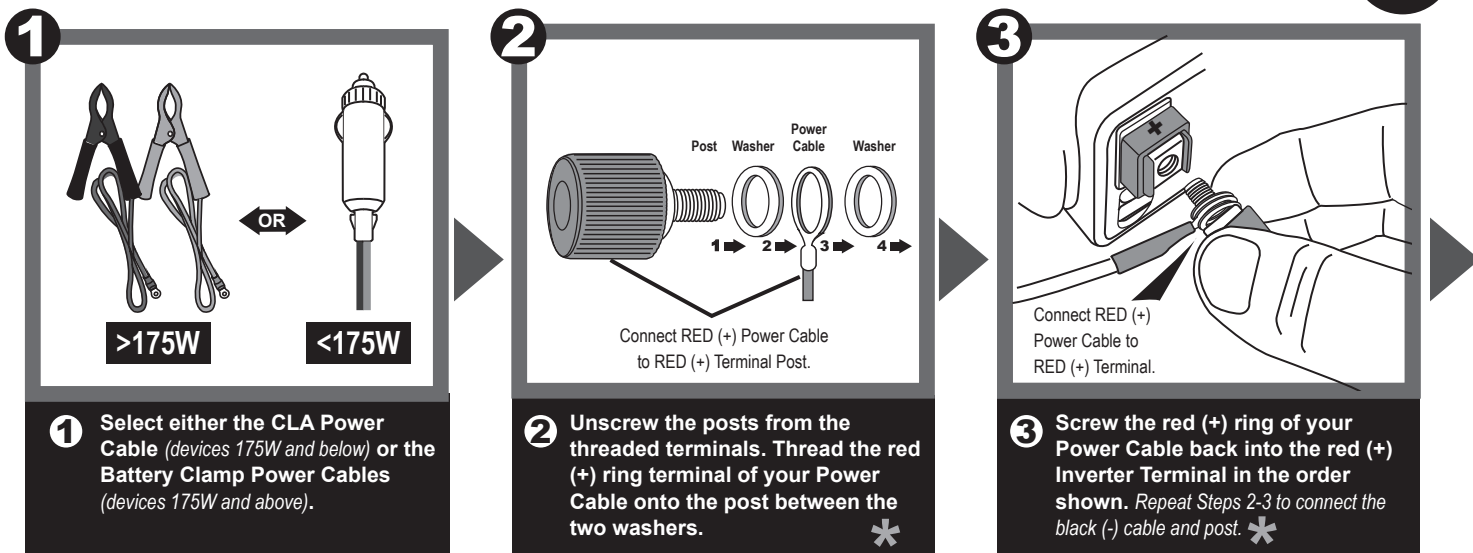
The CLA power plug is designed for lower-wattage applications (>175W) only. Connecting larger devices may overload the inverter may cause an over-current and shut down the inverter (see Troubleshooting Guide).

⚠ WARNING: Battery Voltage

Your inverter is designed to connect to 12 Volt batteries only. Using a higher voltage battery will cause an over-voltage shutdown; using a lower-voltage will cause an under-voltage shutdown (see Troubleshooting Guide).

Operation and Use - 400 Watt Inverter

400 WATTS

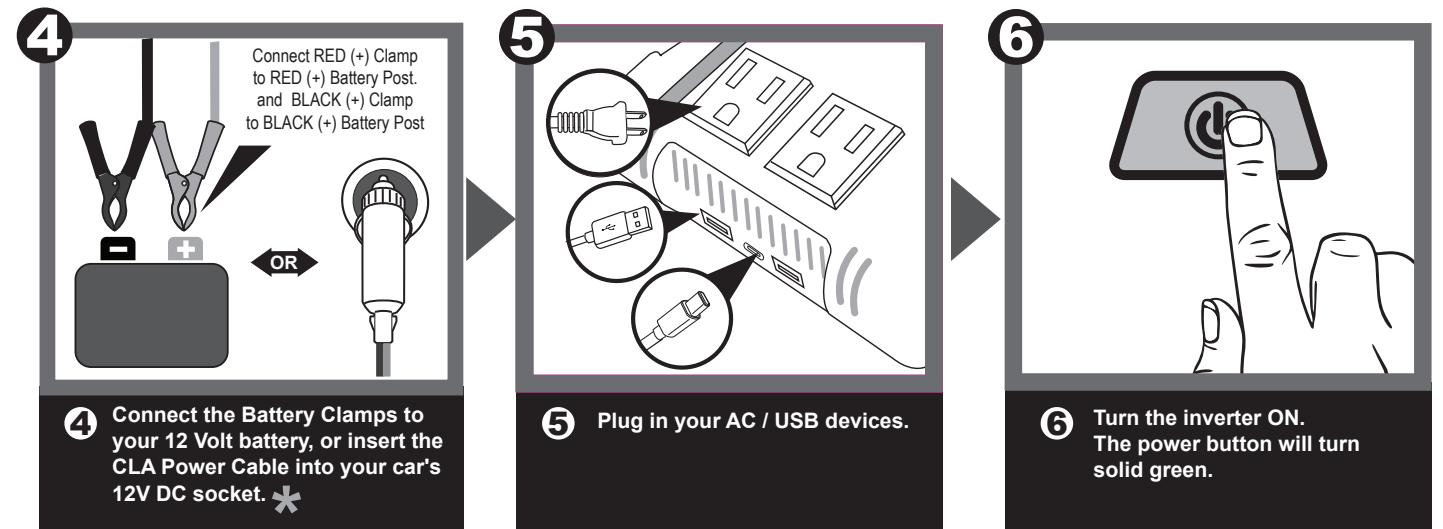


* = See "Reverse Input" warning in "Before You Start" section.

(Continued on next page)

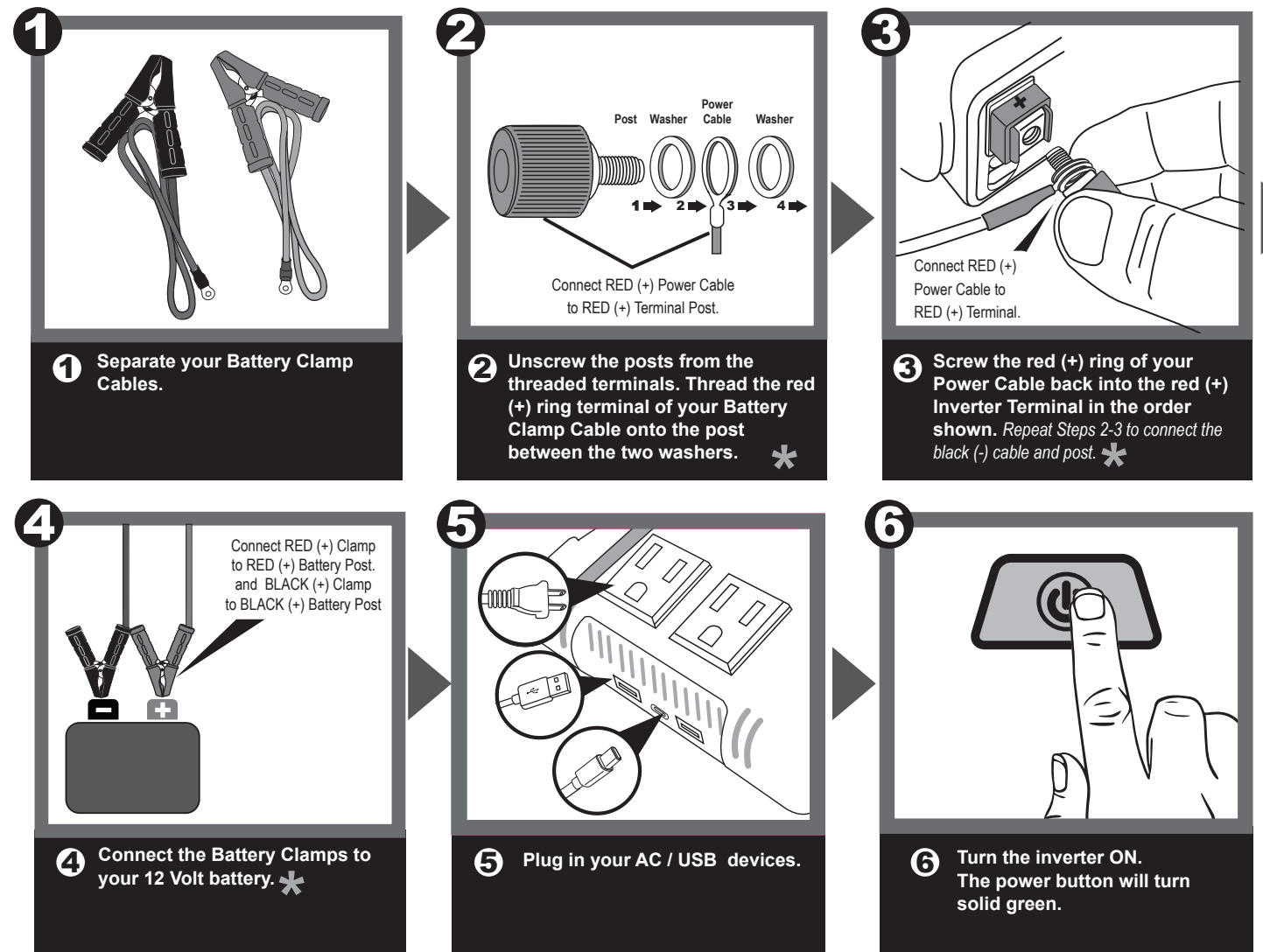
Operation and Use - 400 Watt Inverter (continued)

400 WATTS



Operation and Use - 800 Watt Inverter

800 WATTS



DURACELL® 400 Watt/800 Watt High Power Inverters

User Guide

Compatible Household Items

Below are some examples of common household devices and electronics and their typical wattages that your Duracell inverter can run and recharge.

NOTE: These are estimates of typical power usage only. To find the exact power draw of your individual device, please consult the manufacturer's user manual.



Smartphone/
Tablet
20 Watts



LED Work
Light
90 Watts



Video Game
90 Watts



Laptop
Computer
90 Watts



< 32" TV
70 Watts



Household Fan
200 Watts



32" - 60" LCD TV
70 - 175 Watts



Blender
500 Watts*

*Works with inverters 800 Watts and larger only.

Product Specifications

Output Specifications	400W	800W
Continuous power (Watts)	400	800
Surgepower (Watts)	800	1600
Output wave form	Modified sine wave	Modified sine wave
No-load power draw	<0.45 A DC	<0.45 A DC
Nominal output voltage	115V AC	115V AC
USB	5V DC, 3.1A Shared	5V DC, 3.1A Shared
Protection And Alarms	400W	800W
Low battery alarm	10.5V DC (beeping sound)	10.5V DC (beeping sound)
Low battery shutdown	9.5V DC	9.5V DC
High battery voltage shutdown	15.5V DC	15.5V DC
Fuse (external, user replaceable)	25A x 2 (max)	35A x 3 (max)
Over-temperature protection	Yes	Yes
Cooling fan	Yes, temperature-controlled	Yes, temperature-controlled
Overload and short circuit protection	Yes	Yes
Dimensions And Weight	400W	800W
Dimensions (inches / cm)	7.3 x 4.2 x 1.1 / 18.5 x 10.6 x 6.0	9.0 x 5.0 x 2.7 / 22.9 x 12.6 x 6.9
Weight (lbs / kg)	1.2 / 0.52	2.1 / 0.96

Support and Warranty

Contacting Customer Support

If you experience any problems or have any questions regarding your DURACELL® product, free technical support is available. Call from a phone where you have access to your mobile device.

Be prepared to provide the following information:

- Name, address and telephone number
- Name of the DURACELL® product
- Make and model of your device
- Symptoms of the problem(s) and what led to them

Technical Support is available by telephone:
U.S. and Canada (800) 300-1857
Outside of the US/Canada: (805) 437-7765
Written inquiries should be directed to: Battery-Biz Inc.;
DURACELL® Product Inquiry
1380 Flynn Road, Camarillo, CA 93012, USA

Recycling Information

Battery-Biz is committed to environmental responsibility and recommends that electronic devices be disposed of properly. Please contact your local city offices for information on recycling and disposal programs for e-waste.

For instructions on how to recycle this product visit <http://www.call2recycle.org>.

Three Year Warranty Limited Warranty

The DURACELL® product carries a limited warranty against defects in material and workmanship under normal use and service for three years from the original date of purchase. The manufacturer or distributor, at its option, shall repair or replace the defective unit covered by this warranty. Please retain the dated sales receipt as evidence of the date of purchase as it will be required for any warranty service. In order to keep the warranty in effect, the product must have been handled and used as described in the instructions accompanying this warranty. This warranty does not cover any damage due to accident, misuse, abuse or negligence.

Disclaimer Of Warranty

The limited warranty described herein is your sole remedy. To the extent permitted by law, the manufacturer and distributor disclaim all other implied or express warranties including all warranties of merchantability and/or fitness for any particular purpose.

Limitation Of Liability

Except to the extent of repairing or replacing this product as expressly stated in the limited warranty described herein, the manufacturer and distributor shall not be liable for any damages, whether direct, indirect, incidental, special, consequential, exemplary, or otherwise, including lost revenues, lost profits, loss of use of software, loss or recovery of data, rental of replacement equipment, downtime, damage to property, and third-party claims, arising out of any theory of recovery, including statutory, contract or tort. Notwithstanding the term of any limited or implied warranty, or in the event that any limited warranty fails of its essential purpose, in no event will the manufacturer's and distributors entire liability exceed the purchase price of this product. Some states and provinces do not allow the exclusion or limitation of incidental or consequential damages so the above limitations or exclusions may not apply to you. This limited warranty gives you specific legal rights. You may have other rights which vary from state to state and province to province.

Troubleshooting Guide

Your inverter features several built-in protection features to ensure safe and efficient operation. Below is a guide which shows the typical faults that occur during normal operation and how to correct them to resume using your inverter. If a fault occurs, you will be alerted by an audible alarm (Constant Beep for 30 seconds then silence for 5 minutes; this will repeat until the fault is resolved). The power button LED may also turn red to alert you as well. Please refer to the table below to safely correct any problems and allow your inverter to reset and resume operation. If you have additional questions, please contact Customer Service at (800) 300-1857.

Fault Type	Power Button Color	Inverter shutdown	What it means	What to do	Reset your inverter
Low voltage	Red	Yes (stops operation)	Your source battery is running low/ approaching full discharge	Recharge your battery, or connect the inverter to a new, fully charged battery	Automatic (Once input voltage reaches 12V)
Over voltage	Red	Yes (stops operation)	The voltage of your source battery is too high (exceeds 15.5 Volts)	Connect to a 12 Volt battery	Automatic (Once input voltage is 15V or less)
Over load/ short circuit	Red	Yes (stops operation)	The power draw of your devices exceeds the maximum output of the inverter	Disconnect your devices and ensure that your combined power draw is less than 400 Watts or 800 Watts (varies by inverter)	Manual reset: Press power button and hold for 2 seconds to turn off, then press and hold power button again for 2 seconds to turn on
Over temperature	Red	Yes (stops operation)	Inverter has overheated	Disconnect any devices and allow the inverter to cool down for 10 minutes Ensure that nothing is blocking the cooling fan and that air is circulating freely around the inverter.	Automatic (Once inverter cools down)

Safety Information

This section contains important safety information. Before using the inverter, READ ALL instructions and cautionary markings on or provided with the inverter, and all appropriate sections of this guide. The inverter contains no user-serviceable parts.

⚠ WARNING: FIRE AND/OR CHEMICAL BURN HAZARD
Do not cover or obstruct any air vent openings and/or install in a zero-clearance compartment.

- ⚠ WARNING: FAILURE TO FOLLOW THESE INSTRUCTIONS CAN RESULT IN DEATH OR SERIOUS INJURY**
- Use and store the inverter in an indoor area away from direct sunlight, heat, moisture or conductive contaminants.
 - During use, allow a minimum of three inches of space around the inverter for optimal ventilation.
 - When working with electrical equipment or lead acid batteries, have someone nearby in case of an emergency.
 - Study and follow all the battery manufacturer's specific precautions when installing, using and servicing the battery connected to the inverter.
 - Wear eye protection and gloves.
 - Avoid touching your eyes while using this unit.
 - Keep fresh water and soap on hand in the event battery acid comes in contact with eyes. If this occurs, cleanse right away with soap and water for a minimum of 15 minutes and seek medical attention.

- Use precautions by not smoking or having an open spark or fire near battery installations. Batteries contain flammable materials.
- Keep unit away from moist or damp areas.
- Avoid dropping any metal tool or object on the battery. Doing so could create a spark or short circuit which goes through the battery or another electrical tool that may create an explosion.

⚠ WARNING: Shock Hazard. Keep away from children!
Avoid moisture. Never expose unit to snow, water etc.
Unit provides 115 VAC, treat the output socket the same as regular wall AC sockets at home.

⚠ WARNING: Explosion hazard!
DO NOT use the inverter in the vicinity of flammable fumes or gases (such as propane tanks or large engines).
AVOID covering the ventilation openings. Always operate unit in an open area.

⚠ WARNING: Medical equipment!
This product is NOT tested, designed nor intended to be used with life support systems or any other medical device.

Product Registration

For complete warranty coverage, please register your Duracell product within fourteen days of purchase.

Visit DuracellPower.com/Register

or scan the QR code below to register.



Additional Language Manuals

Manuales en idiomas adicionales • Manuels dans d'autres langues

Spanish and French language user manuals are available at duracellpower.com
Los manuales de usuario en español están disponibles en duracellpower.com
Les manuels d'utilisation en français sont disponibles sur duracellpower.com