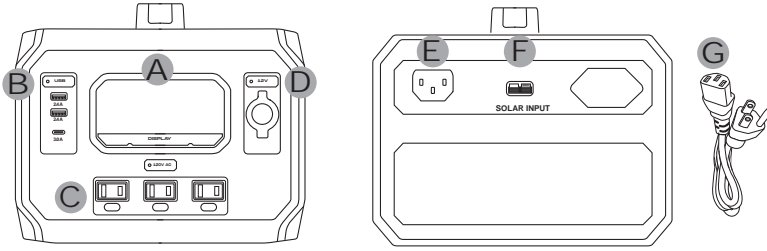


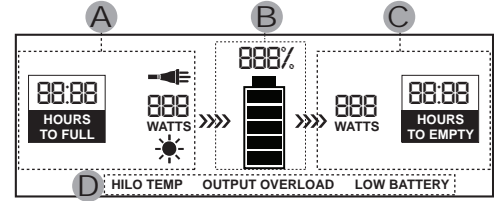
## Product Details



- A. Intelligent LCD screen: See details at right
- B. USB power button and ports
- C. AC power button and outlets
- D. 12V power button and accessory socket

- E. AC input port: Use AC charging cord (included)
- F. Solar charge controller
- G. AC charging cord

## Intelligent LCD Screen Details



### A. Charging Input Indicators

- Time to fully charge (hours to full)
- AC solar charge detected
- Input wattage

### B. Fuel Gauge Indicators

- Percentage of available battery power
- Battery graph fuel gauge

### C. Power Output (Usage) Indicators

- Total output wattage
- Time remaining to empty at current output

### D. Warning Indicators

- HI TEMP/LO TEMP
- OUTPUT OVERLOAD
- LOW BATTERY

## Getting Started: Charging the PowerSource

**⚠ IMPORTANT - CHARGE BEFORE USE:** Fully charge the PowerSource before using it and/or storing it. Keep the unit plugged in when not in use so it is ready when you need it. The charger is designed to maintain the battery in a healthy state.

**⚠ BEFORE YOU START:** See "Safety Information" section for important precautions. The user should conform to all safety precautions in the guide. Keep this guide in a safe place for future reference.

**⚠ IMPORTANT:** The PowerSource should be placed in a dry, well ventilated area with at least 6 inches of space on all sides for proper ventilation.

The PowerSource can be charged from grid power (AC) or solar energy (solar panels).

- When it is being charged and discharged (used to power your items) at the same time:
  - If the input power (charging the PowerSource) is *greater* than the output power (used to power your items), the intelligent LCD screen will show the "Hours to Full".
  - If the input power (charging the PowerSource) is *less* than the output power (used to power your items), the intelligent LCD screen will show the "Hours to Empty".
  - The LCD screen stays on during charging but it can be turned off by pressing the **DISPLAY** button below the screen.

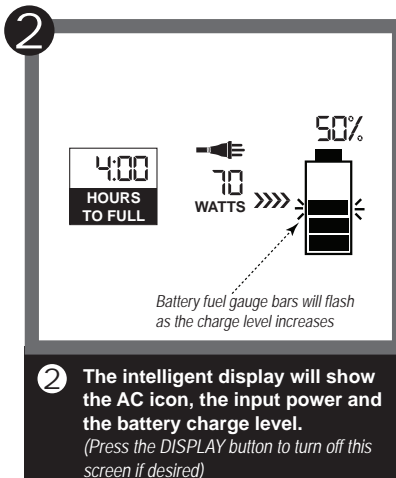
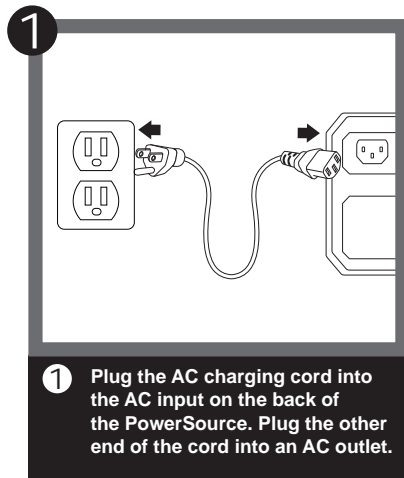
If your PowerSource is fully discharged (0% available power), the intelligent LCD screen will be completely dark. This screen will illuminate as soon as the PowerSource is connected to power, letting you know that the unit is charging, and will continually display the growing power status as the PowerSource charges.

## Charging the PowerSource from an AC outlet

**🕒 Estimated Charge Time: 7 hours to full**

NOTE: The internal 80W charger can deliver a net charge of up to 70W to the battery, so the maximum charging wattage that will show on the intelligent LCD screen is "70W" (this is normal).

NOTE: The 7 hour charge time may vary depending on your AC outlet power and the climate (PowerSource may charge more slowly in very high or low temperatures).



### Keep charged for immediate use

You may keep the PowerSource plugged into your AC outlet for maintenance charging. The internal charger is designed to optimize power without overcharging the battery. We recommend keeping your PowerSource charged so it provides maximum power when you need it.

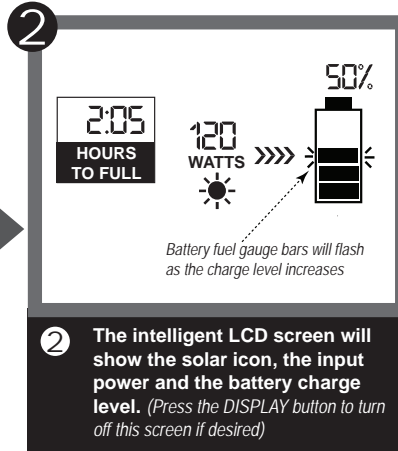
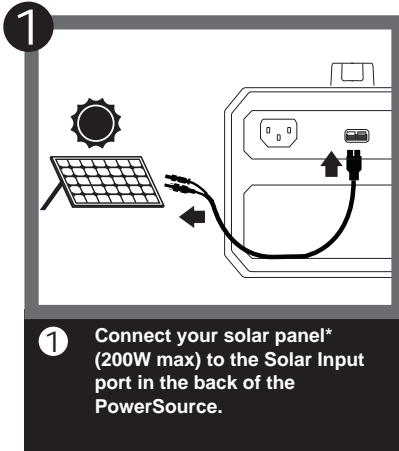
# Getting Started (cont'd)

## Charging the PowerSource from a solar panel

 Estimated Charge Time: 4 hours to full

NOTE: The built-in MPPT solar control will automatically optimize the voltage and current to provide the most efficient charging to the PowerSource.

NOTE: The 4 hour charge time may vary depending on solar exposure and the climate (PowerSource may charge more slowly in very high or low temperatures).



### Optimizing Your Solar Charging


The estimated 4-hour charge time is based on a 200 Watt solar panel in ideal clear, sunny conditions. The PowerSource is compatible with all standard solar panels. You may also use smaller, lower-wattage solar panels to charge your PowerSource (charge times will vary according to the wattage of your panel).

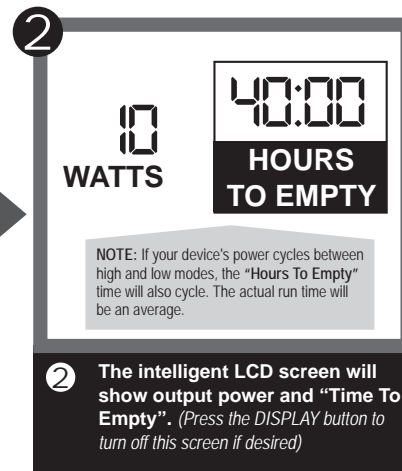
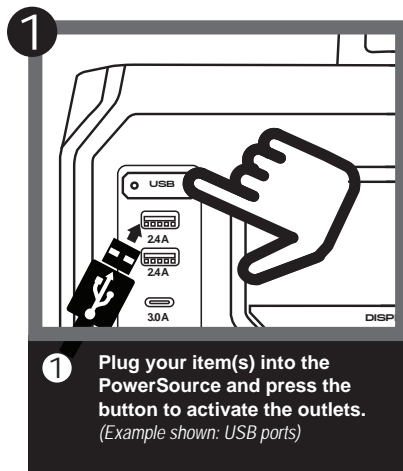
To obtain the fastest charge time, position your solar panel where it will receive the maximum exposure to direct sunlight. If the solar panel is placed in shade or is used in cloudy conditions, it may take significantly longer to charge your PowerSource.

You may also keep the PowerSource connected to the solar panel for continued charging. It is recommended to keep the PowerSource charged so it is ready any time.

\* The solar panel and cable are sold separately.

## Using the PowerSource

 Each output type (USB, AC, DC) has a separate power button with an indicator light to show that it is on. When any port is on the intelligent LCD screen will also turn on. You can turn off the intelligent LCD screen at any time by pressing the DISPLAY button below the screen.



### Connecting Multiple Items

You can power and charge several items at once using any combination of available AC/12V outlets and USB ports, as long as the total combined power draw of all connected items does not exceed 500 Watts.


Please note that the more items are connected, the faster your PowerSource will consume its available battery power and need to be recharged.


### Conserving Battery Power

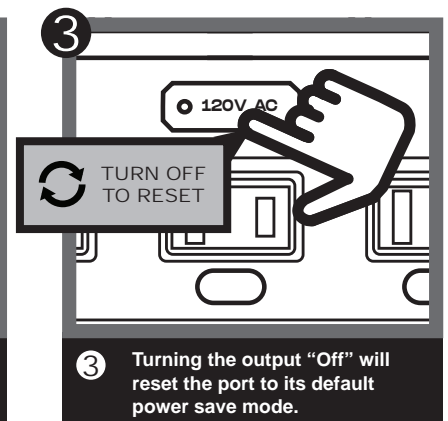
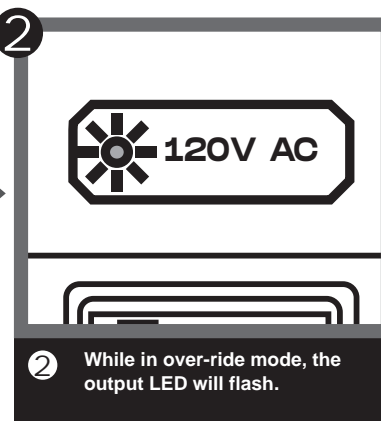
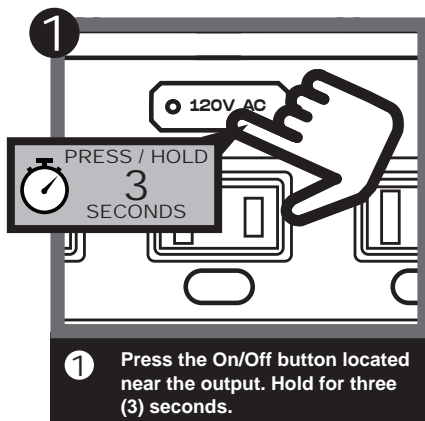
When you are done using the outlet(s) and USB port(s), press the button again to turn them off. This will keep the internal battery from passively draining.

Additionally, when an output is not used for more than one hour it will automatically turn off to conserve battery power.

## Power-Save Over-Ride

 To conserve power, each output is designed to automatically turn off if there is less than 5W-AC or 100mA-USB/12V power output for more than one hour. However, you can over-ride this power save feature by simply pressing and holding the corresponding On/Off button (AC/USB/12V) for 3 seconds.

  
USE THIS MODE FOR  
**CPAP**  
AND  
OTHER  
LOW-DRAW  
APPLIANCES



# Reference

## Household Items: Typical Estimated Run Times With PowerSource

Device	Continuous ADraw (Watts)	Run Time
LED String lights	3.3W	151 hours
LED Light Bulb (100 W Equivalent)	14W	35.5 hours
LED Light Bulb (60 W Equivalent)	8.2W	61 hours
Incandescent light bulb	58.8W	8.5 hours
CPAP	53W	10 hours
TV (42" LED) (100 W) + DVR	48.3W	11 hours
Cable modem + Wi-Fi router	12.5W	40 hours
Bar Fridge (1.7cu ft)	50W	12 hours
Dorm Fridge/Mini Fridge (3.7 cu ft)	40W	12 hours
Mid Size Refrigerator (17 cu ft)	78W	7 hours
Ice Maker	90W	5.5 hours
Blender	200W	2 hours
Sump Pump (1/4 HP)	250W	1.5 hours

### Important Note:

These household items, power draw and run times are examples only and may vary. Consult the manual of your specific device for details on its actual power consumption.

### Not Recommended For:

Air conditioners or items with heating elements such as space heaters, rice cookers and hot plates.  
Additional high-surge devices such as circular saws, blenders and sump pumps are also not recommended for use with the PowerSource.

## Troubleshooting Guide

Your PowerSource features several built-in protection features to ensure safe and efficient operation. Below is a guide which shows the typical faults that occur during normal operation and how to correct them and resume use. If a fault occurs, the following warning(s) will appear on the intelligent LCD screen. Please refer to the table below to safely correct any problems and allow your PowerSource to reset and resume operation. If you have additional questions, please contact Customer Service at 805.437.7777.

Fault Type	PowerSource shutdown	What it means	What to do	Reset (PowerSource resumes operation)
HI TEMP / LO TEMP	Yes (stops operation)	Your PowerSource is too hot or too cold <i>(operating temperature range is -10° to 45° C / 14° to 113° F)</i>	Move the PowerSource to a cooler or warmer location as needed	Automatic (Once proper temperature is reached)
OUTPUT OVERLOAD	Yes (stops operation)	Excessive power draw	Remove some of the connected items to lower the total draw on the PowerSource	Manual (turn inverter ON)
LOW BATTERY	Yes (stops operation)	Low battery voltage (<9V)	Charge the PowerSource	Automatic (Once charged to minimum level)
Flashing ☀ icon	Solar input shutdown	Solar Input range exceeded <i>(See Product Specifications)</i>	Check solar panel configuration	Automatic (Once input is within range)

## Safety Information

This section contains important safety information. Before using the product, READ ALL instructions and cautionary markings on or provided with the product, and all appropriate sections of this guide. The product contains no user-serviceable parts. SAVE THESE INSTRUCTIONS.

### ⚠ IMPORTANT SAFETY INSTRUCTIONS - SAVE THESE INSTRUCTIONS

**WARNING** – When using this product, basic precautions should always be followed, including the following:

- Read all the instructions before using the product.
- To reduce the risk of injury, close supervision is necessary when the product is used near children.
- Do not put fingers or hands into the product.
- Do not expose PowerSource to rain or snow.
- Use of an attachment not recommended or sold by PowerSource manufacturer may result in a risk of fire, electric shock, or injury to persons.
- To reduce risk of damage to the electric plug and cord, pull the plug rather than the cord when disconnecting the PowerSource.

#### ⚠ WARNING: NO USER SERVICEABLE PARTS

- There are no user serviceable parts in this unit, DO NOT attempt to open the PowerSource; this is dangerous and will void the warranty.

#### ⚠ WARNING: HEAT GENERATION DURING CHARGING AND USE

- Charging and discharging generates heat and requires proper air flow. Use in a ventilated area and ensure adequate clearance for the ventilation grills. Blocking the grills may cause overheating and damage to the unit.

- Do not use the PowerSource or appliance that is damaged or modified. A damaged or modified PowerSource may exhibit unpredictable behavior resulting in fire, explosion or risk of injury.
- Do not operate the PowerSource with a damaged cord or plug, or a damaged output cable.
- Do not disassemble the PowerSource, take it to a qualified service person when service or repair is required. Incorrect reassembly may result in a risk of fire or electric shock.
- To reduce the risk of electric shock, unplug the PowerSource from the outlet before attempting any instructed servicing.

#### PERSONAL PRECAUTIONS

- When charging the internal battery, work in a well ventilated area and do not restrict ventilation in any way.
- Do not expose a PowerSource to fire or excessive temperature. Exposure to fire or temperature above 130°C / 266°F may cause explosion.

#### ⚠ WARNING: RISK OF ELECTRIC SHOCK INJURY

- Do not operate or store in moist conditions to avoid electric shock.
- If the unit gets wet wait for it to dry completely before using it.
- Do not insert foreign objects into any of the ports or openings.

#### ⚠ WARNING: RISK OF ELECTRIC SHOCK OR FIRE HAZARD

- Review the specifications of the PowerSource ports and all connected devices you intend to use.
- The output ports can generate dangerous voltages.
- Do not use the PowerSource if it is damaged or any of the input or output cords are damaged.

## Product Specifications

<b>Battery</b>	
Chemistry	Li-Ion
Capacity	478Wh
<b>Input</b>	
AC Charger	120V AC, 60Hz, 80W
Solar Controller - MPPT	13-30V DC, 200W Max.
<b>AC Outlet</b>	
Number of outlets	3
AC Output	120V AC, 60Hz, Pure Sine Wave
AC Output (continuous)	500W
AC Output (5 min PowerBoost)	650W
AC Output (3 sec PowerBoost)	1000W
DC 12V Port (1x)	9-12.6V 10A

<b>USB Ports</b>	
USB - A (2x)	5V, 2.4A, Total 4.8A
USB - C PD (1x)	5V / 9V / 12V / 15V / 20V, 3.0A, 60W Max
<b>Operating Temperatures</b>	
Charging	0-45° C / 32-113° F
Discharging (in use)	-10-45° C / 14-113° F
<b>Certifications</b>	
Safety	ANSI/CAN/UL2743
Efficiency	CEC/BC/DOE
EMI	FCC Part 15
<b>Dimensions and Weight</b>	
Length	27.0 cm / 10.6 in
Width	22.7 cm / 8.9 in
Height	20.0 cm / 7.9 in
Weight	4.8 kg / 10.6 lb

# Support and Warranty

## Maintenance

In order to keep your PowerSource operating efficiently, periodically clean and maintain your unit using the simple steps below.

- Clean the surface of the PowerSource when necessary. Always use a soft sponge or cloth for cleaning. A mild, non-abrasive cleaning detergent may be used to remove stubborn dirt.
- Avoid using your PowerSource in dirty conditions where foreign matter such as dust, dirt and moisture can clog the AC and USB outlets and charging ports. Keep the PowerSource in a well-ventilated area away from direct exposure to outside elements whenever possible.
- Do not attempt to insert anything into the PowerSource's openings to clean them, as this may result in injury or damage to the PowerSource and void the warranty.
- Do not attempt to repair the PowerSource yourself, as this may result in injury or damage to the PowerSource and void the warranty. Please contact our Customer Service at 800-300-1857.

## FCC / ISED Information

This device complies with part 15 of FCC Rules. Operation is subject to the following two conditions: (1) This device may not cause harmful interference, and (2) this device must accept any interference received, including interference that may cause undesired operation.

Changes or modifications not expressly approved by the party responsible for compliance could void the user's authority to operate the equipment.

**NOTE:** This equipment has been tested and found to comply with the limits for a Class B digital device, pursuant to part 15 of the FCC Rules. These limits are designed to provide reasonable protection against harmful interference in a residential installation. This equipment generates, uses and can radiate radio frequency energy and, if not installed and used in accordance with the instructions, may cause harmful interference to radio communications. However, there is no guarantee that interference will not occur in a particular installation. If this equipment does cause harmful interference to radio or television reception, which can be determined by turning the equipment off and on, the user is encouraged to try to correct the interference by one or more of the following measures:

- Reorient or relocate the receiving antenna.
- Increase the separation between the equipment and the receiver.
- Connect the equipment into an outlet on a circuit different from that to which the receiver is connected.
- Consult the dealer or an experienced radio/TV technician for help.

CAN ICES-003 (B) / NMB-003 (B)

## Support and Warranty

### Contacting Customer Support

If you experience any problems or have any questions regarding your product, free technical support is available. Call from a phone where you have access to your product.

Be prepared to provide the following information:

- Name, address and telephone number
- Name of the product
- Make and model of any items or devices that you are using with the product
- Symptoms of the problem(s) and what led to them

Technical Support is available by telephone:

U.S. and Canada 805.437.7777

or by email at [Info@Phase2Energy.com](mailto:Info@Phase2Energy.com)

Written inquiries should be directed to:

Battery-Biz Inc.

PowerSource Product Inquiry

1380 Flynn Road, Camarillo, CA 93012, USA

### Two Year Warranty

#### Limited Warranty

This product (Product) is warranted (Limited Warranty) by Battery-Biz Inc. (Distributor) against defects in material and workmanship under normal use and service to the original purchaser (Purchaser) for a period of 2 (two) years (Warranty Period) from the original date of purchase. The Limited Warranty does not extend to any subsequent owner or other transferee of the Product. Purchaser shall retain the dated sales receipt as evidence of proof and date of purchase as it will be required for any warranty claim or service. In order to keep the Limited Warranty in effect, the Product must have been handled and used as described in the instructions accompanying this Limited Warranty. The Limited Warranty does not cover any damage due to accident, improper storage, improper installation, modifications, unauthorized repair, normal wear and tear, failure to observe product specifications or safety warnings, force majeure, misuse, abuse or negligence. This Limited Warranty shall be null and void if Product's label(s) have been defaced, altered, or removed.

#### Remedies Under Warranty

With respect to a defective Product during the Warranty Period, Distributor in its sole and absolute discretion, will either: (a) repair or replace such Product (or the defective part) free of charge or (b) refund the purchase price of such Product. Distributor will pay for shipping and handling fees to return the repaired or replacement product to the Purchaser during the Warranty Period.

#### Disclaimer Of Warranty

The Limited Warranty described herein is Purchaser's sole remedy. To the extent permitted by law, Distributor disclaims all other implied or express warranties on Product including all warranties of merchantability and/or fitness for any particular purpose.

### Recycling Information

Battery-Biz is committed to environmental responsibility and recommends that electronic devices be disposed of properly. Please contact your local city offices for information on recycling and disposal programs for e-waste.

For instructions on how to recycle this product visit <http://www.call2recycle.org>.

#### Limitation Of Liability

Except to the extent of repairing or replacing Product as expressly stated in the Limited Warranty described herein, Distributor shall not be liable for any damages, whether direct, indirect, incidental, special, consequential, exemplary, or otherwise, including lost revenues, lost profits, loss of use of software, loss or recovery of data, rental of replacement equipment, downtime, damage to property, and third-party claims, arising out of any theory of recovery, including statutory, contract or tort. Notwithstanding the terms of any limited or implied warranty or in the event that the Limited Warranty fails in its essential purpose, in no event will Distributor's entire liability exceed the purchase price of the Product. Some states and provinces do not allow the exclusion or limitation of incidental or consequential damages so the above limitations or exclusions and as a result may not apply to Purchaser. This Limited Warranty gives Purchaser specific legal rights. Purchaser may have other rights which vary from state to state and province to province.

In order to be considered for coverage under this Limited Warranty, all warranty returns of Product to Distributor must include (1) a copy of the original receipt for the purchase of Product, (2) a letter from Purchaser referencing the Return Merchandise Authorization number issued by Distributor to Purchaser with a description of the problem, and (3) Purchaser's contact information including phone number and shipping address. Purchaser is responsible for the cost of the warranty return shipping and handling as well as any related claims that may arise.