



**MESTRA® USA**  
Since 1945

**Work Box**

# Orion

**Specifications**

Height 11.8 in • Width 14.2 in  
Depth 13 in • Weight 5.7 lb

- ✓ High luminosity LED lamp
- ✓ Absence of shadows inside
- ✓ Ergonomic work position
- ✓ Includes support for micromotor in the interior
- ✓ Optimum dust absorption by external suction (not included)
- ✓ Easy cleaning



REF. 080214

**\$414**

**Sandblaster**

# Eclipse II

- ✓ Completely made of ABS
- ✓ High luminosity LED lamp
- ✓ Reduced dimensions but with a large work area
- ✓ They have two mobile micro-blasting nozzles
- ✓ The hopper version has a large sand tank and a 0.12 in static gun
- ✓ Operating pressure 2-5 atm

**Specifications**

Ref. 080220 • Height 13 in • Width 14.2 in  
Depth 17.7 in • Weight 12.6 lb  
Max. air consumption 21.1 gal/min  
Ref. 080228 • Height 19.3 in • Width 14.2 in  
Depth 17.7 in • Weight 17 lb  
Max. air consumption 26.4 gal/min



Eclipse II REF. 080220

**\$827**

Eclipse IIT REF. 080228

**\$993**

**Automatic Polymerizing Pot**

# Autopol Geisser

- ✓ Stainless steel product
- ✓ Two safety valves
- ✓ Easily programmable parameters



**Specifications**

Height 13.8 in • Width 14.2 in • Depth 15.8 in  
Weight 11 lb • Pot Ø 8.7 in • Pot height 6.7 in  
Max. pressure 29 lb/in • Max. Temperature 212°F  
Capacity 1.6 gal • Heating power 600 W

REF. 030425

**\$1355**

**Pneumatic Polymerizing Pot**

- ✓ Air intake valve with backflow preventer
- ✓ Hose with automatic closing and two safety valves
- ✓ For cold and hot polymerizing
- ✓ Stainless steel product



**Specifications**

Height 9.3 in • Width 9.7 in • Depth 16.5 in • Weight 5.3 lb  
Pot Ø 9.7 in • Max. press. 2 bar • Max. temp. 140°F • Capacity 1.6 gal

REF. 030420

**\$325**

**Washing and Polymerizing Machine**

# E2

- ✓ Stainless steel product
- ✓ Polymerization program and shower
- ✓ Quick connector shower for a perfect wax removal
- ✓ Large compartment with room for six clamps with two flasks each
- ✓ Drain cock



**Specifications**

Height (without knob) 17.7 in • Width (with key) 25 in  
Length 15.9 in • Weight 75 lb • Power 2200 + 400 W  
Inside dimensions (L) 15.8×(W) 12.6×(H) 13.8 in

REF. 080060

**\$4809**

**Polymerizer for Flasks**

# M9

- ✓ Stainless steel product
- ✓ Cure 9 flasks with clamp 030390
- ✓ End of treatment buzzer
- ✓ It is equipped with a processor to change the temperature according to a preset program



**Specifications**

Height (with knob) 18.9 in • Width (with key) 10.6 in  
Depth 18.9 in • Weight 33,1 lb • Consumption 1750 W

REF. 080400

**\$2237**

## Sandblaster **Pluton**

- ✓ Stainless steel product
- ✓ With two mobile guns, a pedal and LED lamps



REF. 080253

**\$1005**

### Specifications

Height 11.4 in • Width 13.4 in • Depth 9.3 in

Weight 13.5 lb • Operating pressure 2-5 bars

Consumption 20W • Max. air consumption 21.1 l/min

## Polishing Mini Box **Gorbea**

- ✓ Connection to aspiration
- ✓ LED lamps incorporated
- ✓ Protective shields
- ✓ Safe switch



\*Brushes not included

REF. 080508

**\$727**

### Specifications

Height 9.8 in • Width 15.8 in • Depth 11 in

Weight 66.2 lb • Operating pressure 2-5 bars

Noise 67 dB • Max. air consumption 80 l/min

## Polishing **Box** with Suction

- ✓ Made entirely of stainless steel
- ✓ Lighting by two anti-fatigue lamps
- ✓ Silent autonomous suction unit
- ✓ It has two rubber shields to collect heavy particles
- ✓ Protection against unexpected starts by safety switch with manual reset



REF. 080500

**\$4506**

### Specifications

Height 19.7 in • Width 31.5 in • Depth 19.7 in

Weight 127.9 in • Speed 1500/3000 W • Noise 67 dB

## Box with Suction for Polishing

- ✓ It has a vacuum unit and filter, polycarbonate protective visors and Schuko type socket with manual safety reset to prevent unexpected starts
- ✓ Made of highly resistant polypropylene, with a steel chassis to form a highly robust assembly
- ✓ The machine is supplied with two rubber shields



\*On request can be supplied with 080150, 080160 or 080162 polishers bolted to its base

REF. 080502

**\$2379**

### Specifications

Height 19.7 in • Width 31.5 in • Depth 19.7 in

Weight 66.4 lb • Airflow 500 m<sup>3</sup>/h • Noise 67 dB

## Vacuum Mixer **Iris II**



Iris II Evolution Advanced  
REF. 080518

**\$1249**



Iris II  
REF. 080516

**\$1036**



Iris II Evolution Inverter  
REF. 080517E

**\$1171**

- ✓ Economical and useful vacuum mixer
- ✓ Just place the bowl and press the operation key, the mixer will start and in a few seconds the mixture will be ready
- ✓ There are three versions available that share the motor-pump-chassis structure of recognized solidity and reliability



It has a wide range of bowls with capacities of 0.07, 0.15, 0.19, 0.26 and 0.33 gal (specially designed for alginate mixing) made of resistant transparent polycarbonate, except 080529 (stainless steel)

Optional support  
REF. 080519

**\$217**





### Model Trimmer

# Mulhacen

3000 L

- ✓ Powerful motor with integrated brake
- ✓ Discs with velcro closure (Velcro®)
- ✓ Sophisticated cleaning system
- ✓ Alert light for people with hearing impairment
- ✓ Easily accessible lid (hinged opening)
- ✓ Made of highly resistant technical plastics
- ✓ Corrosion free



REF. 080093

#### Specifications

Height 13.4 in • Width 13.6 in • Depth 16.5 in • Weight 32 lb  
 Power 1600 W • Speed 3000 rpm • Disc Ø 9.8 in

\$806

### Model Trimmer

# RH 3000

- ✓ Side drain designed to avoid obstructions
- ✓ Supported on non-slip rubber
- ✓ The engine is faired providing greater safety at work
- ✓ Made of aluminum
- ✓ Epoxy paint finish



Diamond disc  
REF. 080083

#### Specifications

Height 13.6 in • Width 12.2 in • Depth 17.7 in • Weight 46.3 lb  
 Power 1200 W • Speed 3000 rpm • Disc Ø 9.8-10 in

\$1612

### Polypropylene

# Decanter

- ✓ Made of resistant polypropylene
- ✓ Designed for a quick and easy cleanup
- ✓ The lid closes hermetically and prevents the spread of bad odors
- ✓ Designed to easily install under the sink



REF. 080087

#### Specifications

Height 11.8 in • Diameter 13.8 in  
 Weight 4.9 lb • Capacity 3.7 gal

\$304

### Interior

# Trimmer

- ✓ It has a large base and non-slip rubber feet to prevent unwanted vibrations or movement.
- ✓ 1/3 HP, 3450 rpm motor ensures optimum cutting power
- ✓ Smooth and quiet operation
- ✓ Designed to work with 0.24 in (shank diameter) drill bits
- ✓ It has a Schuko type socket very useful when using an extractor
- ✓ Safety switch to prevent unexpected starts
- ✓ Drill protection screen
- ✓ Supplied with a 12 tooth carbide drill
- ✓ Stainless steel product



REF. 080102

#### Specifications

Height 11.8 in • Width 10.8 in • Depth 10.8 in  
 Weight 24.3 lb • Speed 3450 rpm

\$1124

### Gel Mixer

# Aneto

- ✓ Extremely smooth and quiet operation
- ✓ Housing made of stainless steel and polyurethane
- ✓ High capacity (approximately 1.85 gallon tank)
- ✓ Electronic control for multiple settings



REF. 080512

#### Specifications

Height 18.3 in • Width 13 in • Depth 15.2 in  
 Weight 30.9 lb • Capacity 1.9 gal • Speed 100 rpm

\$3694

### Steam Cleaning Box

# Altamira

- ✓ Polypropylene frame, with wide window
- ✓ It has an efficient double filter system that is accessible and easy to clean
- ✓ Perfect lighting



REF. 080600

\$1080

#### Specifications

Height 22.4 in  
 Width 19.3 in  
 Depth 20.5 in  
 Weight 52.9 lb  
 Capacity 1.6 gal  
 Consumption 140 W

# Electrovibrator Teide Cima

## Specifications

Height 7.8 in  
Width 10.4 in  
Depth 8.9 in  
Weight 12.1 lb



- ✓ Allows you to choose between 5 different types of vibration
- ✓ It has a timer and electronic control to regulate the vibration power
- ✓ Equipped with a ball for easier pouring

REF. 080024

\$472

## Alginate Mixer

REF. 080515

- ✓ Spatule included
- ✓ Transportable
- ✓ Two speeds
- ✓ Ergonomic

## Specifications

Height 9.1 in  
Width 6.9 in  
Depth 9.9 in  
Weight 6.6 lb



\$481

CE Medical Device  
MDR 2017/745

## Hydraulic Press

- ✓ Made of ground hardened and tempered steel
- ✓ Finished with epoxy paint
- ✓ Includes bottom plate recovery springs to always be ready for use
- ✓ The top plate diameter and the width between columns enable to insert and remove the flasks 030380 without having to raise or lower the spindle, thus saving time and trouble



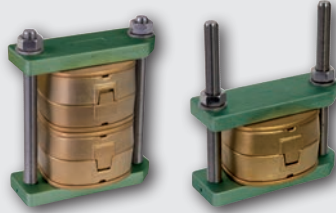
## Specifications

Height 20 in  
Width 9.5 in  
Weight 44 lb

REF. 030350

\$912

## Clamp for Press



- ✓ Made of special hardened and treated aluminium, to give it a greater consistency and recovery

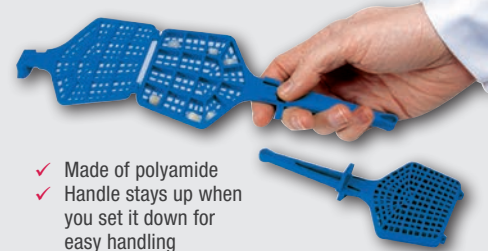
REF. 030380

\$80

## Specifications

Height 0 - 5.7 in • Width 4.5 in  
Weight 3.1 lb

## Grind for Teeth Cleaning



- ✓ Made of polyamide
- ✓ Handle stays up when you set it down for easy handling
- ✓ Easy to handle and safe lock
- ✓ For dental cleaning with a steam machine or washing machine

REF. 050345

\$28

## Specifications

Height 7.1 in • Width 3.4 in  
Thickness 0.5 in • Weight 0.1 lb

## Plastic Flask for Duplicating

- ✓ Made of plastic



## Inside dimensions

Length 3.9 in  
Height 3.3 in  
Width 2.1 in  
Weight 0.3 lb

REF. 020180

\$34

## Flask for Silicone Duplicating

- ✓ Made of plastic



## Inside dimensions

Length 3.4 in  
Height 2.6 in  
Width 1.6 in  
Weight 1.2 lb

REF. 020186

\$26

## Shield for Polisher

- ✓ Made of rubber



## Inside dimensions

Length 11.8 in  
Height 7.5 in  
Width 10.6 in  
Weight 3.1 lb

REF. 080210

\$107

## Pouring Flask



- ✓ All necessary elements for the Resin Pouring Technique
- ✓ Up cover for the pouring and filling with jelly/silicone
- ✓ Supplied with magnet and stainless steel cutting tube
- ✓ Pierced case for the steam cleaning of teeth
- ✓ Working table with central magnet
- ✓ Side holes for the resin pouring

REF. 020202

## Inside dimensions

(L) 4.1 × (W) 3.2 × (H) 2 in • 0.3 lb

\$100



MESTRA® USA

mestra.es

The manufacturer reserves the right to make changes without prior notice  
Not all items are in stock



Management System  
ISO 9001:2015  
www.tuv.com  
ID 1100018003

SALES & MARKETING REPRESENTATION ▼

**Fast Forward Marketing LLC**

Mr. Brian Reichert  
Representing Mestra USA  
# 203 843 4200  
briatfastforward@aol.com