

Available through



135 Duryea Road, Melville, NY 11747
Phone: 1-800-496-9500
Fax: 1-877-303-1100
zahn.sales@henryschein.com
www.zahndental.com

GREAT WHITE®
LAB SERIES
CARBIDE BURS

JAZZ®
LAB GRINDERS • LAB POLISHERS

EXPRESS LINE
DIAMOND DISCS • LAB METAL FINISHING BURS
LAB DIAMONDS - STRAIGHT HANDPIECE INSTRUMENTS

DURADI™
DIAMOND COATED
CAD/CAM CARBIDES
LAZER SHARP™
UNCOATED
CAD/CAM CARBIDES



WHITE Dental®

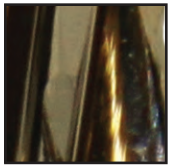
Better Patient Outcomes
Improved Efficiency
Faster Practice Growth

Increased Performance and Durability with Zirconium Nitride Coated Lab Cutters

- 10X increased durability and longevity with extremely hard cutting surface of 2,800 Vickers
- Abrasion resistance reduces surface heat and vibration for a cooler, more consistent surface finish
- Comprehensive selection of shapes, sizes and grits, manufactured with tungsten carbide heads and stainless steel shanks
- Sold in packs of 1 ea.

SGE SERIES™

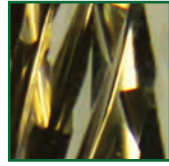
Model Plaster
BULK REDUCTION ON
WET PLASTER
Soft Reline - REMOVAL



Shank	ISO Shape	200	201
SSW Item Number		GW79-050SGE-4	GW79-070SGE-4
ISO Grit		223	223
Head Dia		050	070
Head Length mm		13	14
Color Band			
Max Speed		30K	20K
Brasseler Number		H79SGE.11.050	H79SGE.11.070
HSI Item Code		999-2455	999-2466

GE SERIES™

Model Plaster - BULK MATERIAL REDUCTION OF WET OR DRY PLASTE
Acrylic - BULK REDUCTION
Non-Precious Alloy - BULK REDUCTION

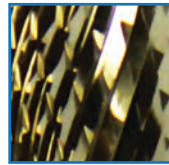


Shank	ISO Shape	143	200	200	200	200	201
SSW Item Number		GW72-060GE-4	GW79-045GE-4	GW79-050GE-4	GW351-060GE-4	GW351-070GE-4	GW79-060GE-4
ISO Grit		220	220	220	220	220	220
Head Dia		060	045	050	060	070	060
Head Length mm		13	13	13	13	13	14
Color Band							
Max Speed		20K	30K	30K	20K	20K	20K
Brasseler Number		-	-	H79GE.11.050	H351GE.11.060	H351GE.11.070	-
HSI Item Code		999-2405	999-2448	999-2453	999-2373	999-2380	999-2459

E SERIES™

Cross Cut

Chrome Cobalt - TRIMMING PARTIAL DENTURE FRAMEWORK
Hard Acrylic - TRIMMING DENTURES, TRAYS, TEMPORARY RESTORATIONS
Metal Alloy - TRIMMING CROWN AND BRIDGE METAL SUBSTRUCTURES
Composite - TRIMMING TEMPORARY APPLIANCE AND RESTORATIONS
Plaster & Stone - TRIMMING MODELS & DIES



Shank	ISO Shape	201	237	257	275
SSW Item Number		GW79-070GE-4	GW77-060GE-4	GW78-060GE-4	GW251-060GE-4
ISO Grit		220	220	220	220
Head Dia		070	060	060	060
Head Length mm		14	11	12	14
Color Band					
Max Speed		20K	20K	20K	20K
Brasseler Number		H79GE.11.070	-	-	H251GE.11.060
HSI Item Code		999-2463	999-2522	999-2425	999-2355

Shank	ISO Shape	001	001	001	001
SSW Item Number		GW71-014E-4	GW71-023E-4	GW71-027E-4	GW71-040E-4
ISO Grit		190	190	190	190
Head Dia		014	023	027	040
L mm		1.25	2.1	2.5	3.5
Color Band					
Max Speed		40K	40K	40K	30K
Brasseler Number		H71E.11.014	H71E.11.023	H71E.11.027	H71E.11.040
HSI Item Code		999-2513	999-2394	999-2395	999-2397

Shank	ISO Shape	001	001	001	110	123	139	141	143	144	144	187
SSW Item Number		GW71-050E-4	GW71-060E-4	GW71-070E-4	GW296-040E-4	GW364-023E-4	GW129-014E-4	GW141-023E-4	GW72-060E-4	GW364-023RE-4	GW293-023E-4	GW257-023E-4
ISO Grit		190	190	190	190	190	190	190	190	190	190	190
Head Dia		050	060	070	040	023	014	023	060	023	023	023
L mm		4.5	5.5	6.5	6	15	4	8	13	15	15	15
Color Band												
Max Speed		30K	20K	20K	30K	40K	40K	40K	20K	40K	40K	40K
Brasseler Number		H71E.11.050	H71E.11.060	H71E.11.070	H296E.11.040	H364E.11.023	H129E.11.014	H141E.11.023	H72E.11.060	H364RE.10.023	H293E.11.023	-
HSI Item Code		999-2399	999-2401	999-2402	999-2510	999-2387	999-2467	999-2494	999-2403	999-2389	999-2504	999-2495

Shank	ISO Shape	198	198	199	199	200	200	200	200	200	201
SSW Item Number		GW138-023E-4	GW351-040E-4	GW261-023E-4	GW79-031E-4	GW79-040E-4	GW79-045E-4	GW79-050E-4	GW351-060E-4	GW351-070E-4	GW257-060RE-4
ISO Grit		190	190	190	190	190	190	190	190	190	190
Head Dia		023	040	023	031	040	045	050	060	070	060
Head Length mm		8	8	11.5	11.5	13	13	13	13	13	14
Color Band											
Max Speed		440K	30K	40K	30K	30K	30K	30K	20K	20K	20K
Brasseler Number		H138E.11.023	H351E.11.040	H261E.11.023	-	H79E.11.040	-	H79E.11.050	H351E.11.060	H351E.11.070	H257RE.11.060
HSI Item Code		999-2483	999-2511	999-2500	999-2427	999-2435	999-2445	999-2450	999-2367	999-2378	999-2365

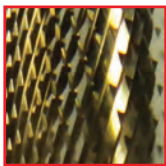
Shank	ISO Shape	201	225	225	225	237	237	237	237	257	257
SSW Item Number		GW79-060E-4	GW137-023E-4	GW137-016E-4	GW137-060E-4	GW77-023E-4	GW77-029E-4	GW77-040E-4	GW77-060E-4	GW78-023E-4	GW78-040E-4
ISO Grit		190	190	190	190	190	190	190	190	190	190
Head Dia		060	023	016	060	023	029	040	060	023	040
Head Length mm		14	5.5	4	8	5.5	5.5	9	11	6	9
Color Band											
Max Speed		20K	40K	40K	20K	40K	40K	30K	20K	40K	30K
Brasseler Number		-	-	H137E.11.016	H137E.11.060	H77E.11.023	H77E.11.029	H77E.11.040	H77E.11.060	H78E.11.023	-
HSI Item Code		999-2456	999-2481	999-2480	999-2343	999-2521	999-2412	999-2415	999-2416	999-2418	999-2420

Shank	ISO Shape	257	273	275	275	275	277	277	277	289	292
SSW Item Number		GW78-060E-4	GW251-040E-4	GW250-040E-4	GW251-060E-4	GW251-070E-4	GW73-023E-4	GW73-040E-4	GW73-060E-4	GW139-023E-4	GW295-023E-4
ISO Grit		190	190	190	190	190	190	190	190	190	190
Head Dia		060	040	040	060	070	023	040	060	023	023
Head Length mm		12	9	13	14	14	3.8	6	10	8	15
Color Band											
Max Speed		20K	30K	30K	20K	20K	40K	30K	20K	40K	40K
Brasseler Number		H78E.11.060	H251E.11.040	H250E.11.040	H251E.11.060	H251E.11.070	H73E.11.023	H73E.11.040	H73E.11.060	H139E.11.023	H295E.11.023
HSI Item Code		999-2422	999-2346	999-2344	999-2348	999-2361	999-2406	999-2408	999-2519	999-2488	999-2507

EF SERIES™

Chrome Cobalt - TRIMMING DENTURE FRAMEWORK
Hard Acrylic - TRIMMING DENTURES, TRAYS, TEMPORARY RESTORATIONS
Metal Alloy - TRIMMING CROWN AND BRIDGE METAL SUBSTRUCTURES
Composite - TRIMMING TEMPORARY APPLIANCE AND RESTORATIONS **Plaster & Stone** - TRIMMING MODELS & DIES

Cross Cut



Shank	ISO Shape	141	144	187	187	198	199	200	200	200
SSW Item Number		GW129-023EF-4	GW364-023REF-4	GW257-023EF-4	GW257-060EF-4	GW138-023EF-4	GW79-031EF-4	GW79-040EF-4	GW79-045EF-4	GW351-060EF-4
ISO Grit		140	140	140	140	140	140	140	140	140
Head Dia		023	023	023	060	023	031	040	045	060
Head Length mm		8	15	15	14	8	11.5	13	13	13
Color Band										
Max Speed		40K	40K	40K	20K	40K	30K	30K	30K	20K
Brasseler Number		H129EF.11.023	H364R.11.023	H257EF.11.023	H257EF.11.060	H138EF.11.023	-	H79EF.11.040	-	H351EF.11.060
HSI Item Code		999-2472	999-2512	999-2496	999-2364	999-2484	999-2428	999-2436	999-2446	999-2371



Shank	ISO Shape	201	237	237	257	275	277	289	292
SSW Item Number		GW79-060EF-4	GW77-023EF-4	GW77-029EF-4	GW78-060EF-4	GW251-060EF-4	GW73-023EF-4	GW139-023EF-4	GW295-023EF-4
ISO Grit		140	140	140	140	140	140	140	140
Head Dia		060	023	029	060	060	023	023	023
Head Length mm		14	5.5	5.5	12	14	3.8	8	15
Color Band									
Max Speed		20K	40K	40K	20K	20K	40K	40K	40K
Brasseler Number		-	H77EF.11.023	H77EF.11.029	H78EF.11.060	H251EF.11.060	H73EF.11.023	H139EF.11.023	H295EF.11.023
HSI Item Code		999-2457	999-2409	999-2413	999-2423	999-2351	999-2407	999-2489	999-2508

Left Handed
EFL SERIES™
Cross Cut

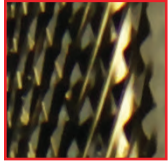
Left Handed
EL SERIES™
Cross Cut

EUF SERIES™ High Noble Alloys - TRIMS WITHOUT FOLDING
Gold Cast Restorations - TRIM AND ADJUST
Cross Cut



Shank	ISO Shape	200	Shank	ISO Shape	199	200	292	Shank	ISO Shape	277	289
SSW Item Number		GW79-040EFL-4	SSW Item Number		GW261-023EL-4	GW79-040EL-4	GW295-023EL-4	SSW Item Number		GW73-014EUF-4	GW139-023EUF-4
ISO Grit		142	ISO Grit		192	192	192	ISO Grit		110	110
Head Dia		040	Head Dia		023	040	023	Head Dia		014	023
Head Length mm		13	L mm		11.5	13	15	L mm		2.9	8
Color Band			Color Band					Color Band			
Max Speed		30K	Max Speed		40K	30K	40K	Max Speed		40K	40K
Brasseler Number		H79EFL.11.040	Brasseler Number		H261EL.11.023	H79EL.11.040	H295EL.11.023	Brasseler Number		H73EUF.11.014	H139EUF.11.023
HSI Item Code		999-2524	HSI Item Code		999-2501	999-2525	999-2509	HSI Item Code		999-2517	999-2490

DF SERIES™ Precision Metal- Crowns and Bridged - FINISHING PRIOR TO VENEERING
Non-Precious Metal - Crowns and Bridged - FINISHING PRIOR TO VENEERING
Porcelain to Metal Margins - FINE ADJUSTMENTS
Cross Cut



Shank	ISO Shape	141	198	199	200	219	289	292
SSW Item Number		GW129-023DF-4	GW138-023DF-4	GW261-023DF-4	GW79-040DF-4	GW136-016DF-4	GW139-023DF-4	GW295-023DF-4
ISO Grit		141	141	141	141	141	141	141
Head Dia		023	023	023	040	016	023	023
L mm		8	8	11.5	13	8	8	15
Color Band								
Max Speed		40K	40K	40K	30K	40K	40K	40K
Brasseler Number		H129DF.11.023	H138DF.11.023	H261DF.11.023	H79DF.11.040	H136DF.11.016	H139DF.11.023	H295DF.11.02
HSI Item Code		999-2471	999-2482	999-2498	999-2431	999-2479	999-2487	999-2505

UM SERIES™ Precious Metal Castings - TRIM, CONTOUR AND FINISH
Chrome Cobalt - ADJUST AND FINISH
Cross Cut

Non-Precious Metal Casting - TRIM, CONTOUR AND FINISH
Partial Denture Framework- TRIM AND CONTOUR



Shank	ISO Shape	141	198	200	200	237	273	275	275	277	289
SSW Item Number		GW129-023UM-4	GW138-023UM-4	GW79-040UM-4	GW351-060UM-4	GW77-023UM-4	GW251-040UM-4	GW250-040UM-4	GW251-060UM-4	GW73-014UM-4	GW139-023UM-4
ISO Grit		145	145	145	145	145	145	145	145	145	145
Head Dia		023	023	040	060	023	040	040	060	014	023
Head Length mm		8	8	13	13	5.5	9	13	14	2.9	8
Color Band											
Max Speed		40K	40K	30K	20K	40K	30K	30K	20K	40K	40K
Brasseler Number		H129UM.11.023	H138UM.11.023	H79UM.11.040	H351UM.11.060	H77UM.11.023	H251UM.11.040	H250UM.11.040	H251UM.11.060	H73UM.11.014	H139UM.11.023
HSI Item Code		999-2478	999-2486	999-2444	999-2377	999-2410	999-2347	999-2345	999-2360	999-2518	999-2493

UK SERIES™

Cross Cut



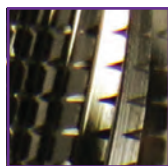
Ceramic Restorations - TRIM AND FINISH
Composite Restorations - TRIM AND FINISH
Acrylic Appliances - TRIM AND CONTOUR



Shank	ISO Shape	198	289
SSW Item Number		GW138-023UK-4	GW139-023UK-4
ISO Grit		144	144
Head Dia		023	023
Head Length mm		8	8
Color Band			
Max Speed		40K	40K
Brasseler Number		H138UK.11.023	H139UK.11.023
HSI Item Code		999-2485	999-2492

Q SERIES™

Cross Cut



Acrylic - ADJUST AND CONTOUR
Titanium - LIGHT TRIMMING
Plaster - TRIM



Shank	ISO Shape	200	200	275
SSW Item Number		GW79-040Q-4	GW351-060Q-4	GW251-060Q-4
ISO Grit		176	176	176
Head Dia		040	060	060
Head Length mm		13	13	14
Color Band				
Max Speed		30K	20K	20K
Brasseler Number		H79Q.11.040	H351Q.11.060	H251Q.11.060
HSI Item Code		999-2443	999-2376	999-2359

FSQ SERIES™

Cross Cut



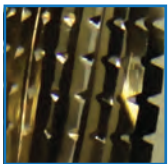
Titanium Implant Abutments - TRIM AND CONTOUR
Soft Acrylic Denture Reline - TRIM
Acrylic Appliances - TRIM



Shank	ISO Shape	141	200	201	275	289
SSW Item Number		GW129-023FSQ-4	GW79-040FSQ-4	GW79-070FSQ-4	GW251-060FSQ-4	GW139-023FSQ-4
ISO Grit		132	132	132	132	132
Head Dia		023	040	070	060	023
Head Length mm		8	13	14	14	8
Color Band						
Max Speed		40K	30K	30K	20K	40K
Brasseler Number		H129FSQ.11.023	H79FSQ.11.040	H79FSQ.11.070	H251FSQ.11.060	H139FSQ.11.023
HSI Item Code		999-2475	999-2437	999-2461	999-2352	999-2491

GSQ SERIES™

Cross Cut

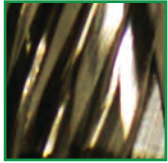


Soft Acrylic or Silicone Denture Reline - TRIM
Non-Precious Alloy - BULK REDUCTION



Shank	ISO Shape	199	200	200	200	201	275
SSW Item Number		GW261-023GSQ-4	GW79-040GSQ-4	GW351-060GSQ-4	GW351-070GSQ-4	GW79-070GSQ-4	GW251-060GSQ-4
ISO Grit		172	172	172	172	172	172
Head Dia		023	040	060	070	070	060
Head Length mm		11.5	13	13	13	14	14
Color Band							
Max Speed		40K	30K	20K	20K	20K	20K
Brasseler Number		H261GSQ.11.023	H79GSQ.11.040	H351GSQ.11.060	-	H79GSQ.11.070	H251GSQ.11.060
HSI Item Code		999-2502	999-2438	999-2374	999-2382	999-2464	999-2356

G SERIES™ Plaster and Stone - TRIM
Acrylic - TRIM
Spiral Fluted



Shank	ISO Shape	143	143	200	200	200	200	201	201	237	257
SSW Item Number		GW72-060G-4	GW72-070G-4	GW79-045G-4	GW79-050G-4	GW351-060G-4	GW351-070G-4	GW79-060G-4	GW79-070G-4	GW77-060G-4	GW78-060G-4
ISO Grit		215	215	215	215	215	215	215	215	215	215
Head Dia		060	070	045	050	060	070	060	070	060	060
Head Length mm		13	13	13	13	13	13	14	14	11	12
Color Band											
Max Speed		20K	20K	30K	30K	20K	20K	20K	20K	20K	20K
Brasseler Number		H72G.11.060	H72G.11.070	-	H79G.11.050	H351G.11.060	H351G.11.070	-	H79G.11.070	H77G.11.060	-
HSI Item Code		999-2404	999-2515	999-2447	999-2452	999-2372	999-2379	999-2458	999-2462	999-2417	999-2424

M SERIES™ Plaster & Stone - TRIM
Acrylic - BULK REDUCTION
Spiral Fluted



Shank	ISO Shape	275	Shank	ISO Shape	001	001	001	143	187	199	199	199	200
SSW Item Number		GW251-060G-4	SSW Item Number		GW71-016M-4	GW71-040M-4	GW71-050M-4	GW72-060M-4	GW257-023M-4	GW261-023M-4	GW79-031M-4	GW79-040M-4	
ISO Grit		215	ISO Grit		175	175	175	175	175	175	175	175	
Head Dia		060	Head Dia		016	040	050	060	023	023	031	040	
Head Length mm		14	Head Length mm		1.4	3.5	4.5	13	15	11.5	11.5	13	
Color Band			Color Band										
Max Speed		20K	Max Speed		40K	30K	30K	20K	40K	40K	30K	30K	
Brasseler Number		-	Brasseler Number		H71.11.016	H71.11.040	H71.11.050	H72.11.060	H257.11.023	H261.11.023	-	H79.11.040	
HSI Item Code		999-2353	HSI Item Code		999-2391	999-2398	999-2400	999-2514	999-2497	999-2503	999-2429	999-2441	



Shank	ISO Shape	200	200	200	200	201	201	201	237	257	257
SSW Item Number		GW79-045M-4	GW79-050M-4	GW351-060M-4	GW351-070M-4	GW257-060RM-4	GW79-060M-4	GW79-070M-4	GW77-060M-4	GW78-023M-4	GW78-060M-4
ISO Grit		175	175	175	175	175	175	175	175	175	175
Head Dia		045	050	060	070	060	060	070	060	023	060
Head Length mm		13	13	13	13	14	14	14	11	6	12
Color Band											
Max Speed		30K	30K	20K	20K	20K	20K	20K	20K	40K	20K
Brasseler Number		-	H79.11.050	H351.11.060	H351.11.070	H257R.11.060	-	H79.11.070	H77.11.060	H78.11.023	H78.11.060
HSI Item Code		999-2449	999-2454	999-2375	999-2384	999-2366	999-2460	999-2465	999-2523	999-2419	999-2426



Shank	ISO Shape	275	275	277
SSW Item Number		GW251-060M-4	GW251-070M-4	GW73-060M-4
ISO Grit		175	175	175
Head Dia		060	070	060
Head Length mm		14	14	10
Color Band				
Max Speed		20K	20K	20K
Brasseler Number		251.11.060	H251.11.070	H73.11.060
HSI Item Code		999-2358	999-2362	999-2520



DIAMOND MODEL TRIMMING WHEELS

EXPRESS LINE

Diamond Trimming Wheels

(Fits most Ray Foster, Renfert & Whip Mix Model Trimmers)

Provides smoother finish than comparable coarse wheels!



- High efficiency cutting increases production
- Designed to last significantly longer than conventional wheels
- Uniform spacing between the diamond aggregates helps ensure immediate removal of debris and less clogging
- Can be used on all gypsum and investment materials of any hardness

AVAILABLE IN 10" AND 12" SIZES

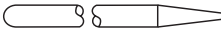
Item	Diameter	Grit	Drive Pin Hole
16196	10"	Medium	Yes
Order #	999-2678		
16198	10"	Medium	No
Order #	999-7425		
16197	12"	Medium	Yes
Order #	999-3912		
16199	12"	Medium	No
Order #	999-6253		

DIAMOND DISCS

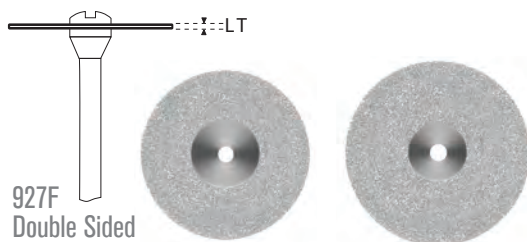
Increase lab efficiency by eliminating wheel changes and cutting with dull wheels. SS White® Diamond Discs provide a smoother finish than comparable coarse wheels and cut faster. Ideal for temporary crown and bridge material and orthodontic stripping. Uniform spacing between the diamond aggregates helps ensure immediate removal of debris and less clogging:

- Designed to last longer than conventional wheels
- Ideal to use on ceramics, acrylics, and plaster
- Reduces black marks on porcelain
- Sold in packs of 1 ea.

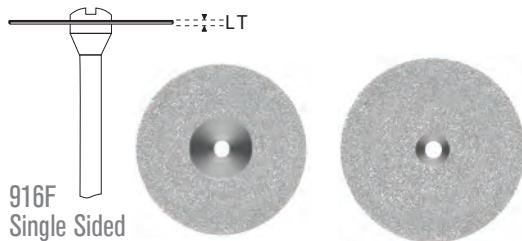
EXPRESS LINE DIAMOND DISCS

Standard
Straight
Handpiece .0925" 
.118" 

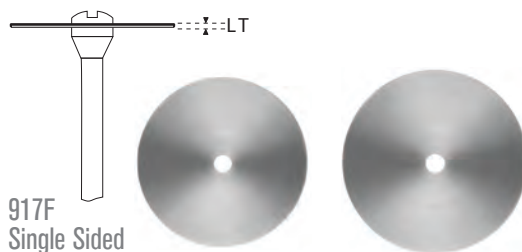
FLEX Mounted Diamond Discs



Order #	999-4536	999-4693
Head Size (1/10mm)	200	220
Thickness (mm)	0.24	0.24
Grit	Medium	Medium

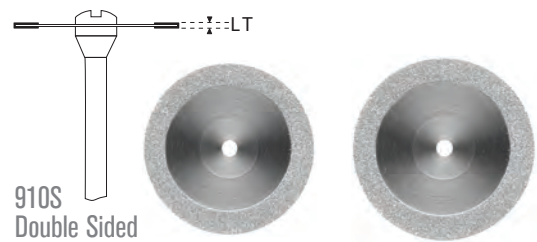


Order #	9992506	9994684
Head Size (1/10mm)	200	220
Thickness (mm)	0.17	0.17
Grit	Medium	Medium

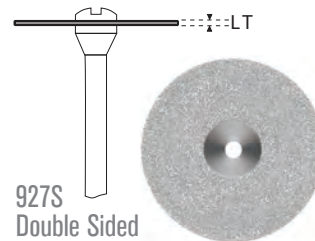


Order #	999-4897	999-5982
Head Size (1/10mm)	200	220
Thickness (mm)	0.17	0.17
Grit	Coarse	Coarse

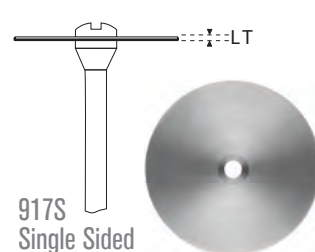
SUPERFLEX Mounted Diamond Discs



Order #	999-4138	999-4221
Head Size (1/10mm)	200	220
Thickness (mm)	0.19	0.19
Grit	Fine	Fine



Order #	9994962
Head Size (1/10mm)	220
Thickness (mm)	0.19
Grit	Fine



Order #	999-4827
Head Size (1/10mm)	220
Thickness (mm)	0.12
Grit	Fine

LABORATORY METAL BURS

The SS White® Express Line Lab Metal Finishing Bur's unique blade geometry cuts easily through metal with minimal heat and hand strain, resulting in less vibration and requiring only a soft touch when cutting:

- Reduced hand fatigue and increased productivity
- Designed to decrease metal finishing time substantially
- Ideal for shaping and gross reduction
- Sold in packs of 5 ea.

EXPRESS LINE LAB METAL FINISHING BURS



FG (25mm) 999-8607 999-1526 999-9994 999-7677 999-9770

EXPRESS LINE® Lab Metal Finishing Bur Kit 999-4428

Kit Contains: One each of the following
Express Line Lab Metal Finishing Burs
EL1, EL2, EL 3, EL4, EL5, FG7006



EXPRESS LINE LAB DIAMONDS - STRAIGHT HANDPIECE INSTRUMENTS

- Excellent abrasive capacity & life
- Ideal for shaping and gross reduction
- Works great on PFM, chrome & ceramic materials
- HP Diamonds on 44.5mm shanks
- Sold in packs of 5 ea.



ROUND
999-2116 999-7040
Item # 16200 16201



INVERTED
CONE
999-5465 999-8694 999-3440 999-4001
16202 16203 16204 16205



CONE FLAT
END
999-9108 999-6137 999-6721
Item # 16206 16207 16208



CONE ROUND
END
999-6064 999-9160
16209 16210



FLAME
999-6189
16211

PRE-SINTERED ZIRCONIA POLISHERS



- Ideal use for pre-sintered (unsintered) Zirconia.
- Contouring 2-in-1 abrasive/polisher
- Quick reduction to final smooth finishing
- Accomplish great result in no time.



Jazz Lab Polisher
GS2S Medium
Ultra Fine Contour Maxi
10x22.7mm
Item #89180
3 PK - HP Shank



Jazz Lab Polisher
GS2S Medium
Ultra Fine Contour Mini
7x19mm
Item #89181
3 PK - HP Shank



Jazz Lab Polisher
GS1S Medium
Contour Bullet
7x13mm
Item #89182
5 PK - HP Shank



Jazz Lab Polisher
GS1S Medium
Contour Point
5.6x13mm
Item #89183
5 PK - HP Shank

HSI Item Code	999-2755	999-2746	999-2747	999-2749
---------------	----------	----------	----------	----------



Jazz Lab Polisher
GS1S Medium
Contour Knife Edge
5x0.3mm
Item #89184
4 PK - HP Shank



Jazz Lab Polisher
GS1S Ultra Fine
White Contour Maxi
10X22.7mm
Item #89185
3 PK - HP Shank



Jazz Lab Polisher
GS1S Ultra Fine
White Contour Mini
7x19mm
Item #89186
3 PK - HP Shank



Jazz Lab Polisher
GS1S Medium
Contour Maxi
10x22.7mm
Item #89187
3 PK - HP Shank

HSI Item Code	999-2750	999-2751	999-2752	999-2753
---------------	----------	----------	----------	----------

After preliminary sprue/connector reduction is completed, make final adjustments with the GS2S Contour 2-Step Instrument . Use with loupes or under a microscope at the very last adjustment point.

Step One: The larger gray segment of this unique instrument quickly reduces the larger final mass (1-2mm) of the connector with minimal risk of damage to the green state zirconia

Step Two : The ultra-fine white tip then gently removes and smooths the final portion of excess material remaining at the connector/restoration junction

Make additional anatomical adjustments using any of our Express Line diamonds or other GS contour instruments.



Jazz Lab Polisher
GS1S Coarse
Large Wheel
22x3.2
Item #89188
5 PK - HP Shank

HSI Item Code	999-2754
---------------	----------

FOR PORCELAIN POLISHING



- Flexible polishing discs for all porcelain materials.
- Diamond grit for highest efficiency.
- Surface corrections without additional glazing.



Lab Polisher P3S
Coarse Large Disc
Item #89153
1 PK HP Shank



Lab Polisher P3S
Coarse Wheel
Unmounted
Item #89154
1 PK



Lab Polisher P3S
Coarse Flame
Item #89155
3 PK HP Shank



Lab Polisher P3S
Coarse Small Wheel
Item #89156
3 PK HP Shank

HSI Item Code 999-2661 999-2652 999-2655 999-2658



Lab Polisher P3S
Medium Large Disc
Item #89157
1 PK HP Shank



Lab Polisher P3S
Medium Wheel
Unmounted
Item #89158
1 PK



Lab Polisher P3S
Medium Flame
Item #89159
3 PK HP Shank



Lab Polisher P3S
Medium Small Wheel
Item #89160
3 PK HP Shank

HSI Item Code 999-2662 999-2653 999-2656 999-2659



Lab Polisher P3S
Fine Large Disc
Item #89161
1 PK HP Shank



Lab Polisher P3S
Fine Wheel
Unmounted
Item #89162
1 PK



Lab Polisher P3S
Fine Flame
Item #89163
3 PK HP Shank



Lab Polisher P3S
Fine Small Wheel
Item #89164
3 PK HP Shank

HSI Item Code 999-2666 999-2663 999-2654 999-2657 999-2660



Jazz Precision Mandrel
#89168
5 PK HP Shank
Dimensions: 303-050 screw top
mandrel with 5mm head size

HSI Item Code 999-2666

FOR DENTURE & ORTHO ACRYLICS



Chairside denture adjustments and polishing.

Silicon carbide abrasive polishers with various grits for different areas of application.

Achieve brilliant results for smoothing, pre-polishing and polishing.

6 PK



Jazz Denture A3S
Coarse Large Flame
Item #89165



Jazz Denture A3S
Medium Large Flame
Item #89166



Jazz Denture A3S
Fine Large Flame
Item #89167

HSI Item Code 999-2629 999-2630 999-2631

Drive Down Material Cost Using Enhanced Performance CAD/CAM Milling Burs with Proven Durability

For Use with Roland Milling Machines

SS White carbide CAD/CAM burs for Roland® milling machines are built to last against hard materials such as zirconium, as well as soft materials like PMMA and wax blanks. The superior design of these burs leads to an extraordinarily long-life advantage compared to competitive burs.

- Diamond coated design increases life of the bur and reduces cost per use
- Reduces remakes by lowering excessive heat and cutting force, often required with lesser quality milling burs
- Sharper cutting efficiency produces superior surface quality
- Ample chip space guarantees efficient chip removal and polished flutes provide bur-free, clean milling results
- Sold in packs of 1 ea.

"Fluid, smooth cutting with longevity. Add in the value vs the competition and I'd recommend these burs to my lab manager without question."

Brian Burkardt
Milling Supervisor
Drake Precision Dental Laboratory



SSWROL-034050-20-02

Head Diameter: .3mm
Shank Diameter: 4mm
Overall Length: 50mm
Cutter Design: 2 Flute Ball End
Milling Machines:
DWX-4, DWX-50, 51D, 52DC
Material Use:
PMMA, Wax, Zirconia, Composite



SSWROL-064050-20-02

Head Diameter: .6mm
Shank Diameter: 4mm
Overall Length: 50mm
Cutter Design: 2 Flute Ball End
Milling Machines:
DWX-4, DWX-50, 51D, 52DC
Material Use:
PMMA, Wax, Zirconia, Composite



SSWROL-084050-20-02

Head Diameter: .8mm
Shank Diameter: 4mm
Overall Length: 50mm
Cutter Design: 2 Flute Ball End
Milling Machines:
DWX-4, DWX-50, 51D, 52DC
Material Use:
PMMA, Wax, Zirconia, Composite



SSWROL-104050-20-02

Head Diameter: 1mm
Shank Diameter: 4mm
Overall Length: 50mm
Cutter Design: 2 Flute Ball End
Milling Machines:
DWX-4, DWX-50, 51D, 52DC
Material Use:
PMMA, Wax, Zirconia, Composite



SSWROL-204050-20-02

Head Diameter: 2mm
Shank Diameter: 4mm
Overall Length: 50mm
Cutter Design: 2 Flute Ball End
Milling Machines:
DWX-4, DWX-50, 51D, 52DC
Material Use:
PMMA, Wax, Zirconia, Composite



HSI Item Code 999-2682

999-2683

999-2685

999-2686

999-2687

4



SSWROL-034050-20-01

Head Diameter: .3mm
Shank Diameter: 4mm
Overall Length: 50mm
Cutter Design: 2 Flute Ball End
Milling Machines:
DWX-4, DWX-50, 51D, 52DC
Material Use:
PMMA, Wax, Zirconia



SSWROL-064050-20-01

Head Diameter: .6mm
Shank Diameter: 4mm
Overall Length: 50mm
Cutter Design: 2 Flute Ball End
Milling Machines:
DWX-4, DWX-50, 51D, 52DC
Material Use:
PMMA, Wax, Zirconia



SSWROL-084050-20-01

Head Diameter: .8mm
Shank Diameter: 4mm
Overall Length: 50mm
Cutter Design: 2 Flute Ball End
Milling Machines:
DWX-4, DWX-50, 51D, 52DC
Material Use:
PMMA, Wax, Zirconia



SSWROL-104050-20-01

Head Diameter: 1mm
Shank Diameter: 4mm
Overall Length: 50mm
Cutter Design: 2 Flute Ball End
Milling Machines:
DWX-4, DWX-50, 51D, 52DC
Material Use:
PMMA, Wax, Zirconia



SSWROL-204050-20-01

Head Diameter: 2mm
Shank Diameter: 4mm
Overall Length: 50mm
Cutter Design: 2 Flute Ball End
Milling Machines:
DWX-4, DWX-50, 51D, 52DC
Material Use:
PMMA, Wax, Zirconia



HSI Item Code 999-2693

999-2694

999-2695

999-2696

999-2697

GREAT WHITE
GOLD SERIES

METAL CUTTING - CAVITY PREPARATION CARBIDE BURS

ROUND



	GW2R	GWSL2R	GW4R	GWSL4R	GW6R	GWSL6R	GW8R
10 PK	999-8103	999-1473	999-0329	999-3520	999-0610	999-9771	999-0782
100 PK	999-4552	5-PACK	999-3372	5-PACK	999-6952	5-PACK	

PEAR



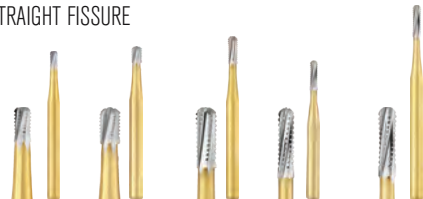
	GW2P	GW330	GW330S
	999-1030	999-1566	999-1690
		999-2110	

INVERTED CONE



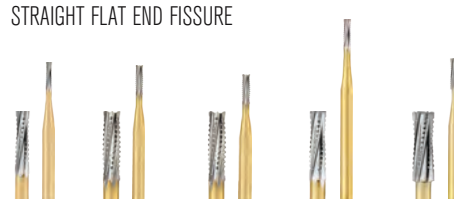
	GW34	GW35	GW37
	999-2529	999-2675	999-2927

STRAIGHT FISSURE



	GWH340	GWH342	GWH342L	GW1557	GWSL1557
10 PK	999-2927	999-0875	999-0876	999-3813	999-1683
100 PK			999-8659	5-PACK	

STRAIGHT FLAT END FISSURE



	GW556	GW557	GW557S	GWSL557	GW558
	999-3176	999-3287	999-3533	999-6841	999-3928
		999-9710		5-PACK	

TAPER FLAT END FISSURE



	GW701	GW702
	999-4193	999-4454

PREPARATION



	GW245
10 PK	997-1256
100 PK	999-1629

RESTORATION REMOVAL



	GW-1	GW-2	GW1S	GW2S
	999-0386	999-0979	999-4562	999-4846
	999-9876	999-3305	999-3910	999-1637

GREAT WHITE Z
ZIRCONIA CUTTING DIAMOND INSTRUMENTS

ROUND END TAPER



	GWZ 856-018
ITEM#	18161

ROUND



	GWZ 801-014
ITEM#	18162



	GWZ 801-018
ITEM#	18163

FOOTBALL



	GWZ 379-023
ITEM#	18164

GREAT WHITE
ULTRA

CROWN & BRIDGE PREPARATION CARBIDE BURS

FOOTBALL



	GWU 379-023
	999-6618

SHORT FLAT END TAPER



	GWU 845KR-016
	999-2191



	GWU 845KR-018
	999-6032



	GWU 845KR-025
	999-2057

FLAT END TAPER



	GWU 847-016
	999-0437



	GWU 847-018
	999-9822



	GWU 847-020
	999-8757

FLAT END TAPER SHORT SHANK



	GWU 847-016S
	999-5084



	GWU 847-018S
	999-9361



	GWU 847-020S
	999-9402

5 PK

HEAD LENGTH (mm)
MAX HEAD
DIAMETER (mm)

	4.2	4.0	4.0	4.0	8.0	8.0	8.0	8.0	8.0	8.0
	2.3	1.6	1.8	2.5	1.6	1.8	2.0	1.6	1.8	2.0

ROUND END TAPER



	GWU 855-025
	999-8624



	GWU 856-016
	999-8624



	GWU 856-018
	999-8805



	GWU 856-020
	999-5315



	GWU856-023
	999-6208

ROUND END TAPER SHORT SHANK



	GWU 856-016S
	999-4390



	GWU 856-018S
	999-6032



	GWU 856-020S
	999-2552

DEPTH CUTTER



	GWDC1	GWDC2
10 PK	999-9003	999-9004

5 PK

HEAD LENGTH (mm)
MAX HEAD
DIAMETER (mm)

	7.0	8.0	8.0	8.0	8.0	8.0	4.0	8.0
	2.5	1.6	1.8	2.0	2.5	1.6	1.8	2.0

HP CARBIDE BURS

Increase your production with SS White[®] industry leading strength, cutting rate and concentricity.



ROUND



10 Pk. HP	999-0013	999-9892	999-0340	999-1083	999-3452	999-1005	999-3203	999-0211	999-0672	999-2142
HP (BULK)		999-0729	999-0821	999-4973		999-5693				999-8725

STRAIGHT/FLAT END PLAIN



57 59

10 Pk. HP	999-4933	999-9326
-----------	----------	----------

STRAIGHT/FLAT END CROSS CUT



557 558 559 560 558L

10 Pk. HP	999-9731	999-1023	999-0396	999-1262	999-3261
-----------	----------	----------	----------	----------	----------

STRAIGHT/ROUND END CROSSCUT



1556 1557 1558

10 Pk. HP	999-5421	999-4039	999-2876
HP (BULK)		999-7871	999-3192

INVERTED CONE



35 36 37 37L 38 39

10 Pk. HP	999-5635	999-6971	999-7718	999-5487	999-1089	9990411
-----------	----------	----------	----------	----------	----------	---------

TAPER/ FLAT END CROSS CUT



699 700 701 702 703 701L 702L 703L

10 Pk. HP	999-1834	999-4022	999-2822	999-8675	999-7655	999-8995	999-9535	999-3900
HP (BULK)			999-6570	999-7156	999-7507			

END CUT



957

HP	999-7042
----	----------

WHEEL



14

HP	999-9476
----	----------

TAPER / ROUND END CROSS CUT



1702 1702L 1703 1703L

10 Pk. HP	999-4380	999-5226	999-0249	999-3540
-----------	----------	----------	----------	----------

