

Vasalta



ROAD ACCESSORIES



Vasalta's line of speed bumps, parking curbs and other rubberized road accessories are eco-friendly, easy to install and built to last.

Made of durable recycled rubber

Easy to install

UV resistant

Temperature resistant

Moisture Resistant

For more information:
www.vasalta.ca

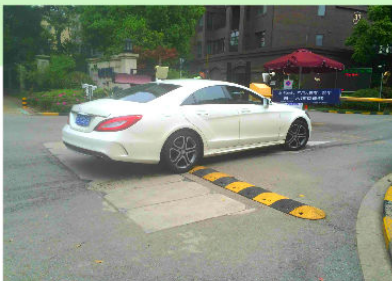


P: 1.587.997.8186
(www.vasalta.ca)
(office@vasalta.ca)

Quik-BumpTM

Customizable Traffic-Calming Device

Quik-Bump is a heavy-duty, rubberized speed bump for residential areas, parking lots and school/ playground zones. It's unique design allows for quick installation (in under an hour by one or two individuals) and can be customized to any desired length or configuration.



What are the benefits of using **Quik-Bump**?

Quick and Easy Installation- Quik-Bump can typically be installed in under an hour. Unlike traditional speed bumps, Quik-Bump does not require a work crew or machinery to install.

Cost effective- Quik-Bump is more economical than traditional speed bumps. Users save money on the costs of labor, heavy machinery and time needed for traditional speed bump construction.

Adaptable and Versatile- Unlike traditional speed bumps, Quik-Bump can easily be moved should traffic-calming strategies change. Users also can arrange the Quik-Bump to any desired length, arrangement or shape.

Eco-friendly- Quik-Bump is made of highly durable recycled rubber (resistant to UV Light, Extreme Temperatures, Heavy Loads, Fading). By using recycled rubber products, we can reduce the amount of rubber in our landfills.

Speed Bumps

Part #

**Dimensions
/Weight**

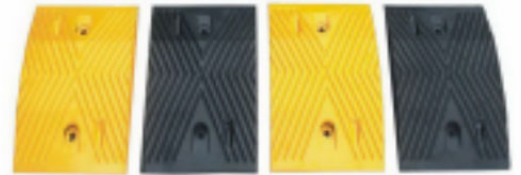
**Speed Bump Body
#VSB1**

**40" x 14" x 2"
Part Weight:16KG**



**Speed Bump
Additional Pieces
#VSB2**

**10" x 14" x 2"
Part Weight:15KG**



**Speed Bump End Caps
#VSB3**

8" x 14" x 2"



**Speed Bump- Single Mold
Two troughs in bottom
#VSB4**

**72" x 12" x 2.5"
Part Weight:26KG**



- Made of Durable, Recycled Rubber
- Easy to Install
- UV Resistant
- Temperature Resistant
- Moisture Resistant
- Designed for Heavy Loads

For More Information:

www.vasalta.ca

Parking Curbs

Part #

**Dimensions
/Weight**

**Slotted locator:
#VTL1**

**20" x 6" x 4"
Part Weight: 10 kg**



**Parking Curb
Reflective Lattice
#VPC1**

**71" x 6" x 4"
Part Weight: 20KG**



**Parking Curb
Reflective Lattice
#VPC2**

**70" x 6" x 4"
Part Weight: 20kg**



**Parking Curb
Reflective Lattice
#VPC3**

**65" x 6" x 4"
Part Weight: 20KG**



- Made of Durable, Recycled Rubber
- Easy to Install
- UV Resistant
- Temperature Resistant
- Moisture Resistant
- Designed for Heavy Loads

For More Information:

www.vasalta.ca