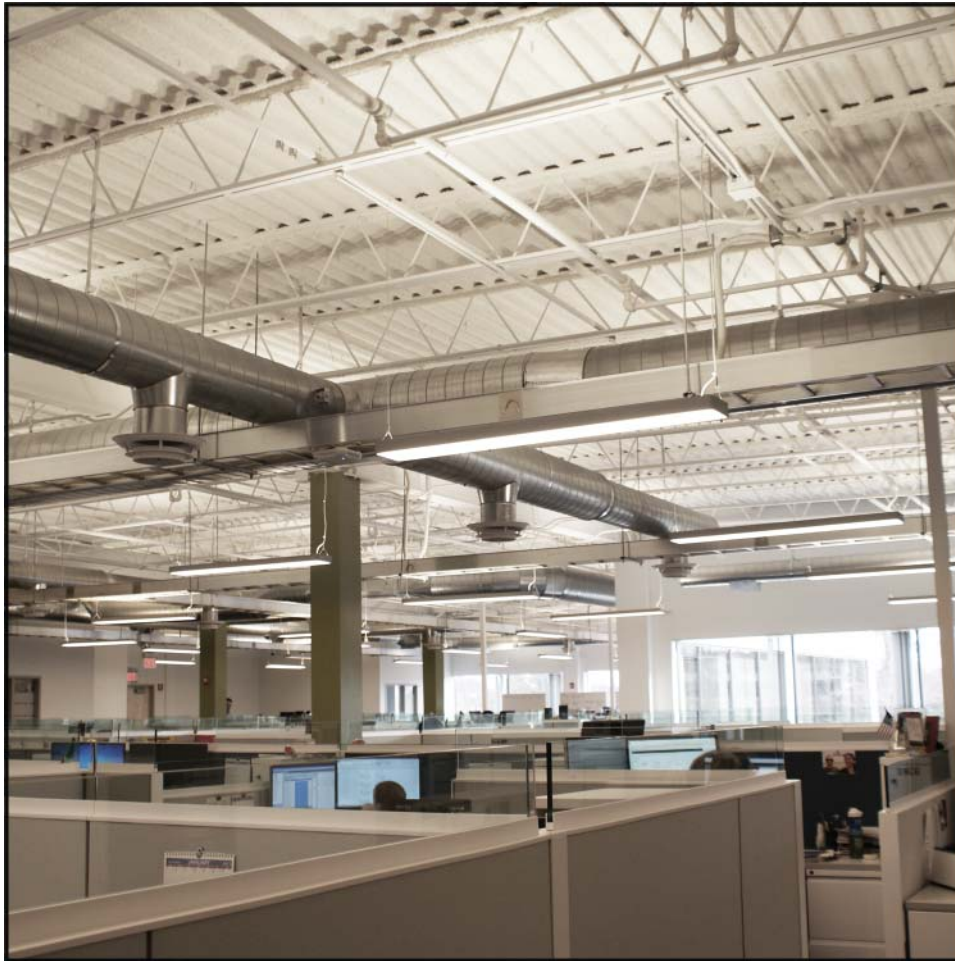


**ati**inc  
acoustical  
thermal  
insulators

101 Old Bedford Road  
Westport, MA 02790

# PROJECT PROFILE

## Comcast Call Center



### PROJECT

Comcast Call Center  
5 Omni Way  
Chelmsford, MA

### ARCHITECT

Maugel Architects  
200 Ayer Road  
Harvard, MA

### DETAILS

SonaSpray "fc" White  
50,000 Square Feet  
.5" Thickness



The architect for the new sprawling Comcast Call Center in Chelmsford Massachusetts knew from past experience that acoustical control would be paramount in this wide open office setting. This retrofit application, applied to a 1.5" fluted deck, seamlessly provides not only a Noise Reduction Coefficient of .75, but supplies the staff with a quiet and relaxing work environment. For more information regarding SonaSpray "fc" call 508-678-1118 or visit our web site @ [www.atiincorporated.com](http://www.atiincorporated.com).

