

# PTSD CAN OCCUR IN COMPANION ANIMALS AFTER DISASTERS

THINGS YOU CAN DO TO HELP YOUR PET

## SET UP A SAFE, SECURE AREA

where the pet can get away from noise, people, and other pets. This can be a crate, a laundry, or a bathroom. Provide separate areas for dogs and cats.

## FAMILIAR OBJECTS

Place familiar objects such as their own bed or mat, toys, or owner's clothing in this safe area if possible.

## MAINTAIN ACTIVITIES

Increase active interaction: take dogs for a daily walk (or better still two), play games like fetch, provide several short positive training sessions each day teaching fun things (not obedience exercises!).

## CALM COMMUNICATION

Provide calm, quiet direction at all times.

## LOTS OF CUDDLES AND LOVE

Extra love hugs and snuggles and praise!

## AVOID ENCOURAGING ATTENTION SEEKING

Do not encourage attention seeking behavior, pre-empt it with other activities such as a walk or teaching the pet to be calm on cue.



FOR MORE INFORMATION ON HOW WE  
CAN HELP YOU AND YOUR PETS

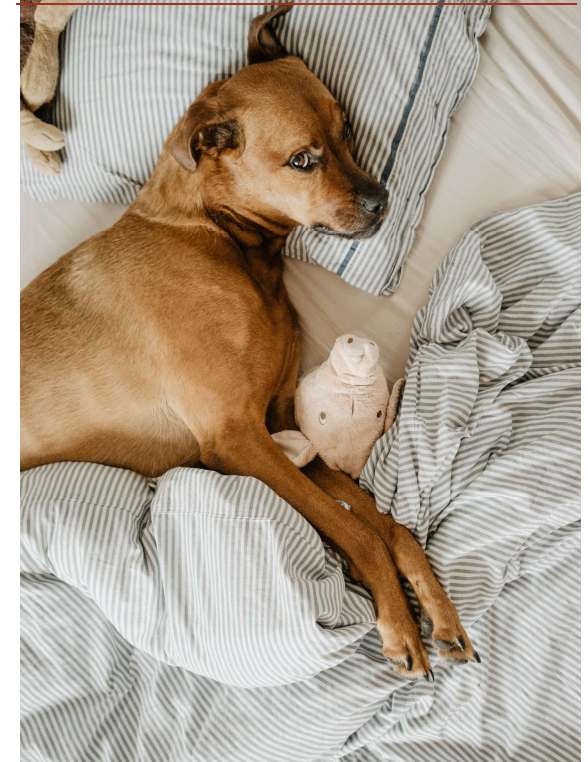
# CALL US 480-202-4032

Ask for the Personal Property Division

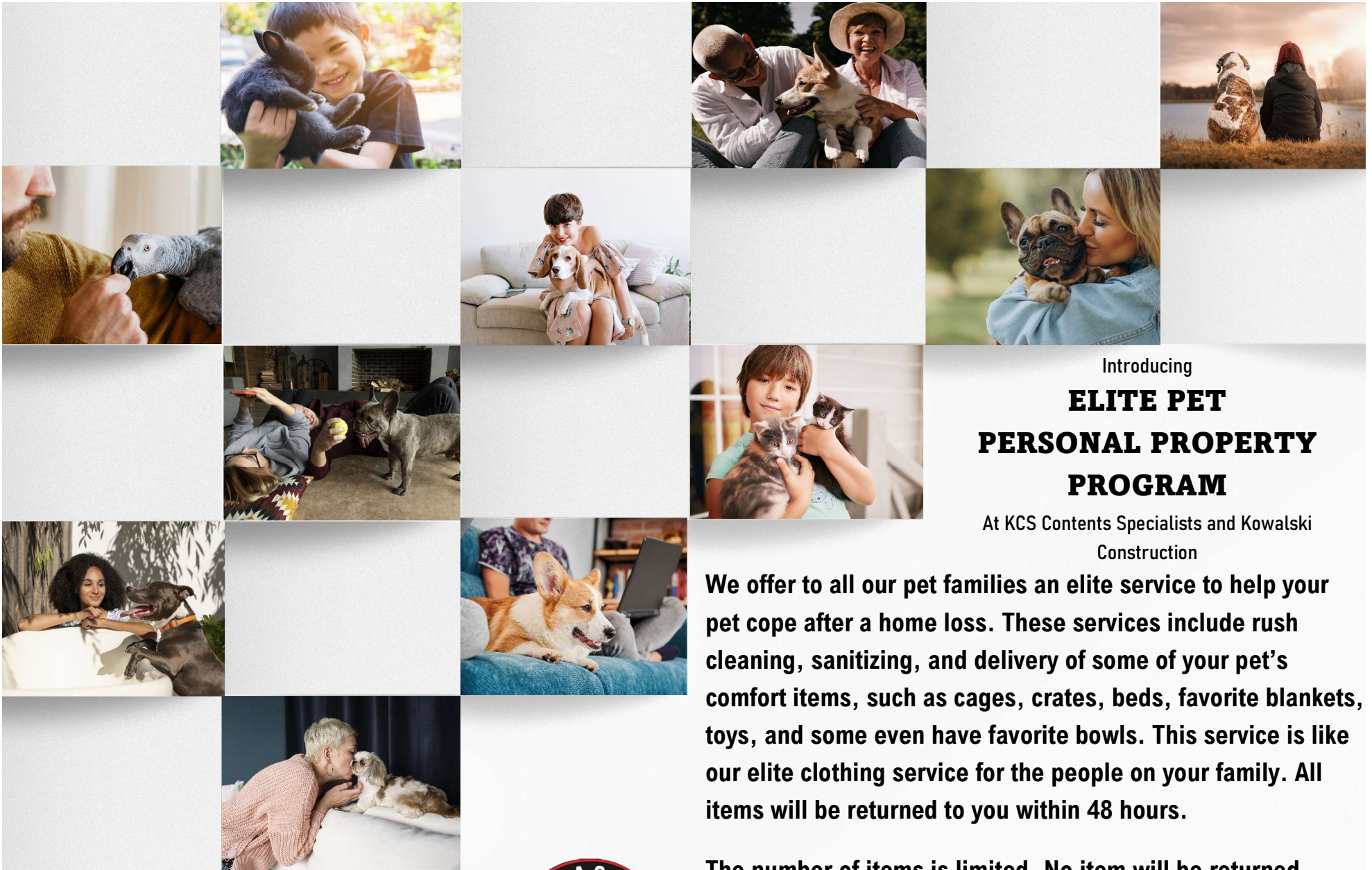


# ELITE PET PROGRAM

BROUGHT TO YOU BY  
KCS CONTENTS SPECIALISTS AND  
KOWALSKI CONSTRUCTION



WE KNOW HOW IMPORTANT YOUR PETS ARE  
TO YOU, WE WANT TO ASSIST YOUR ENTIRE  
FAMILY DURING THE TRANSITIONS YOU ARE  
ALL GOING THROUGH



Introducing  
**ELITE PET  
PERSONAL PROPERTY  
PROGRAM**

At KCS Contents Specialists and Kowalski  
Construction

**We offer to all our pet families an elite service to help your pet cope after a home loss. These services include rush cleaning, sanitizing, and delivery of some of your pet's comfort items, such as cages, crates, beds, favorite blankets, toys, and some even have favorite bowls. This service is like our elite clothing service for the people on your family. All items will be returned to you within 48 hours.**

**The number of items is limited. No item will be returned unless it has passed our safety standards for pets. We do not charge a "rush charge" for this elite service. If the homeowner does not have insurance, there will be no charge.**

