



TEKA UNDERMOUNT SINKS

Price List:  
January - June 2024

# Introduction

## Teka Kitchen Division

In Kitchens, Teka numbers among the leading sink and built-in appliance brand, manufacturing quality home appliances, commercial equipment and most importantly - Kitchen sinks.

It is one of the world's largest producers of sinks and the only technology manufacturer in today's market offering a fully integrated range.

Teka is a world-wide brand with sales offices and production facilities in every corner of the world in over 125 countries in 5 continents. In addition to its own facilities various agents across the world have chosen Teka as their company partner.

## Splash Zone Official Supplier

Teka is a world leader in the field of stainless steel sinks. Originally, Teka was selected as a result of several leading kitchen manufactures requesting a bigger and better range of sinks than what was currently available on the South African market. However, with their superb design and reliable quality, Teka soon became the first choice for more and more home owners throughout South Africa.

Currently Splash Zone, with Teka offers the most extensive range of inset and undermount sinks available on the South African market. The underlining success of the Teka/Splash Zone relationship is based on the thinking that the consumer should select the features they would like to have on a kitchen sink and not the manufacturer. After all, it should not be an unreasonable request to want a sink with deeper bowls.



## Inset Sinks

Teka inset sinks are impressive in every aspect. Inset sinks from Teka are far from the norm, each sink range has its own unique styling on both the bowls and drainer board.

Inset sinks bowls are generally larger and deeper than their competitors, and all feature 18/10 stainless steel with thickness ranging from 0.6mm - 1.2mm. From entry level to exclusive, Teka is sure to have an inset sink to suit your personal taste and budget.

## Mixers

A limited range of Teka mixers are stocked as part of our South African offering.

These mixers are both beautiful in design and excellent in quality. Each mixer contains a ceramic cartridge which allows smooth operation for years to come.

## Contract Sinks

Teka sinks cover every price point without compromising quality.

Specifically manufactured for high quantity development schemes, contractors sinks are manufactured with the same high quality as the rest of the Teka product range.

## Undermount Sinks

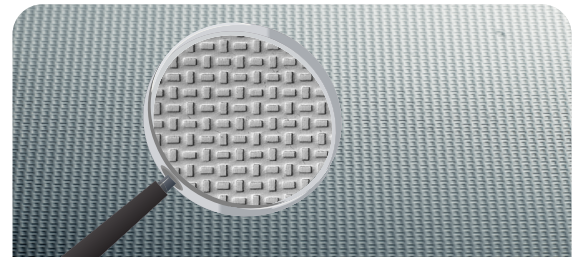
Teka undermounts are by far the most popular sinks in the South African market. We boast the largest range of undermounts in the southern hemisphere and do so because we believe every individual is unique.

Undermounts are manufactured by the highest quality standards with stainless steel thickness of 1.2mm.

## Waste Disposers

Homes that employ the use of waste disposers are entering into the new age of cleaner and greener living.

Food waste is quickly and easily disposed off, eliminating potential pest and smells from sharing your kitchen.



## Microtextured Sinks

Microtextured sinks are manufactured from stainless steel, the textured finish hides scratches while maintaining a stainless steel look and resistance.

Microtexture offers an attractive high relief pattern on the sink's surface. This exclusive finish is also made from 'surgical' stainless steel, i.e. with all the characteristics of stainless. The stainless steel hard-plus finishing gets better result indeed than the standard stainless steel thanks to the special treatment applied to the surface that improves the hardness and the resistance against scratches, making it an ever lasting perfect piece of design in the kitchen.

## Teka, almost 90 years of creative genius

Innovation and a strict commitment to the highest quality standards are two ideals that make Teka the first choice for more and more homes.

Since 1924, Teka group has dedicated all its resources and expertise to achieve one single goal: improving the quality of life of millions of customers.

From an innovative design to improved features, every production process undergoes constant improvement. All this while paying special attention to each detail. Because at Teka, even the smallest detail counts.

When you consider just how much time you spend at the kitchen you realise how important it is to have a kitchen that combines design with user-friendliness.

When purchasing a kitchen sinks it is extremely important to consider each sink's key features and how they can improve your lifestyle.

*are you looking for inspiration?*

# The secrecy of the hidden...

The popularity of undermount sinks is growing because of what they offer to kitchen design. Get the best from your luxury countertop and the desired kitchen design without having any obstacles for cleaning.

Teka undermount series offer a huge collection of shapes, sizes and configurations that can easily be customised adding more single units or accessories. Undermount sinks should be used only with solid countertops of marble, granite or modern composite materials such as Caesarstone. Materials such as Formica and other wooden products are advised against due to the nature of the application and the countertops exposure to water.

Teka undermount sinks are mounted with specialised clips, to ensure that the sink is held strongly in place. Undermounting gives the sink and surroundings a much sleeker appearance. It prevents dirt from getting trapped around or below the rim, it keeps the countertop free from the clutter of daily dishes and kitchen living.

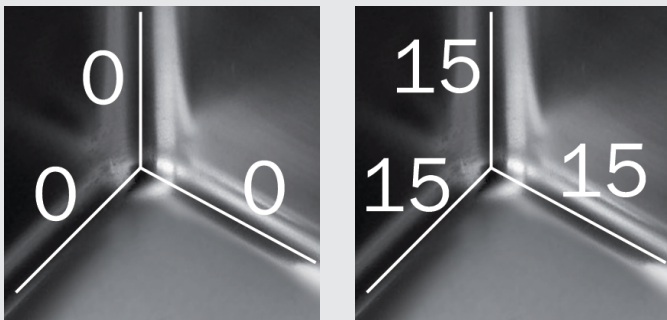
There are many advantages to using undermount sinks :

- Food spills and other debris can be easily collected and pushed right into the sink. It leaves a smooth surface that is easy to clean and you need not worry about materials getting trapped on the rim of the sink
- Due to its seamless nature, it does not require that much attention or maintenance efforts. You can simply wash it with soap and water, or simply wipe it, and its sparkling clean once again.

## Linea R15 undermounts

Trend setters

Just a quick glance is enough to notice that the new Linea sinks are made of something different. Setting new standards is never easy but every once in a while, one new idea shows up leading the way to new concepts that perfectly fit in today's way of life.



**R15** Linea R0 takes on perpendicular lines throughout the sink with 0mm radii at every edge, however perpendicular corners can often be the home of bacteria and dirt when not cleaned correctly.

The R15 range of sinks feature a 15mm radius on the corners of the sink, this makes it easier to clean and has a slight designer curve to it.



## Discover the secret...

# Undermounts

## Linea RS15 2B 740

Double bowl undermount sink

R6,825.00

list price excl. VAT

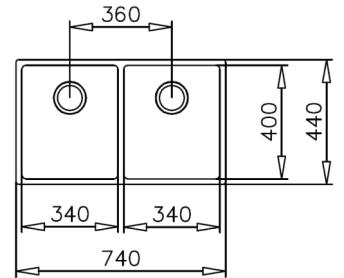
- » **Material**  
Made of polished stainless steel
- » **Measurements in mm**  
Overall (w x h) 740 x 440  
Bowl (w x h x d) 340 x 400 x 200  
Bowl (w x h x d) 340 x 400 x 200  
Thickness: 1mm
- » **Installation**  
Undermount  
Base unit of minimum 800mm wide
- » **Included Accessories**  
90mm basket waste  
Rectangular overflow



Included



Add a pair of angle valves



» **How to Order :**

1 x TE115030007 R6,825.00ea

SPARE WASTE SET TE61001246 R175.00

## Linea RS15 50.40

Single bowl undermount sink

R4,550.00

list price excl. VAT

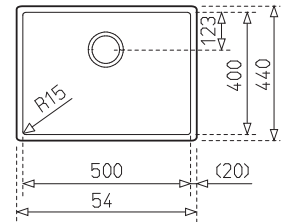
- » **Material**  
Made of polished stainless steel
- » **Measurements in mm**  
Overall (w x h) 540 x 440  
Bowl (w x h x d) 500 x 400 x 193  
Thickness: 1mm
- » **Installation**  
Undermount  
Base unit of minimum 600mm wide
- » **Included Accessories**  
90mm basket waste  
Round overflow



Included



Add a pair of angle valves



» **How to Order :**

1 x TE115000005 R4,550.00ea

SPARE WASTE SET TE61001246 R175.00

## Linea RS15 40.40

Single bowl undermount sink

R3,540.00

list price excl. VAT

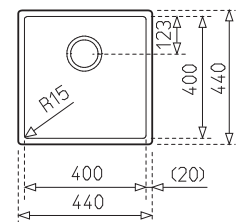
- » **Material**  
Made of polished stainless steel
- » **Measurements in mm**  
Overall (w x h) 440 x 440  
Bowl (w x h x d) 400 x 400 x 184  
Thickness: 1mm
- » **Installation**  
Undermount  
Base unit of minimum 50cm wide
- » **Included Accessories**  
90mm basket waste  
Square overflow



Included



Add a pair of angle valves



» **How to Order :**

1 x TE115000007 R3,540.00ea

SPARE WASTE SET TE61001246 R175.00

## Linea RS15 34.40

Single bowl undermount sink

**R3,330.00**

list price excl. VAT

- » **Material**  
Made of polished stainless steel
- » **Measurements in mm**  
Overall (w x h) 380 x 440  
Bowl (w x h x d) 340 x 400 x 184  
Thickness: 1mm
- » **Installation**  
Undermount  
Base unit of minimum 45cm wide
- » **Included Accessories**  
90mm basket waste  
Round overflow

» **How to Order :**

1 x TE115000008 R3,330.00ea

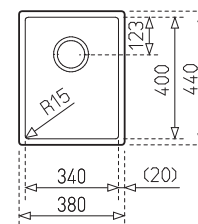
**SPARE WASTE SET TE61001246 R175.00**



Included



Add a pair of angle valves



Looking for excellence...

**BE Undermounts**

There is no better option to accentuate your granite or precious stone countertop than an elegant Teka Undermount. Teka undermounts are supremely constructed and designed to be a showpiece of style and function in the kitchen. Follow the trend of the future... follow Teka.



**BE 74 43 20**

Large bowl undermount sink

**R4,780.00**

list price excl. VAT

- » **Material**  
Made of polished stainless steel
- » **Measurements in mm**  
Overall (w x h) 787 x 482  
Bowl (w x h x d) 736 x 431 x 200  
Thickness: 1mm
- » **Installation**  
Undermount  
Base unit of minimum 90cm wide
- » **Included Accessories**  
90mm basket waste

» **How to Order :**

1 x TE10125121 R4,780.00ea

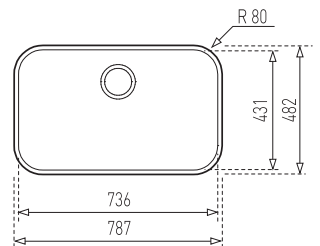
**SPARE WASTE SET TE61001302TEKA R175.00**



Included



Add a pair of angle valves



**BE 50 40 PLUS**

Large bowl undermount sink

**R2,850.00**

list price excl. VAT

- » **Material**  
Made of polished stainless steel
- » **Measurements in mm**  
Overall (w x h) 530 x 430  
Bowl (w x h x d) 500 x 400 x 200  
Thickness: 0.8mm
- » **Installation**  
Undermount  
Base unit of minimum 60cm wide
- » **Included Accessories**  
90mm basket waste  
Round overflow

» **How to Order :**

1 x TE10125122 R2,850.00ea

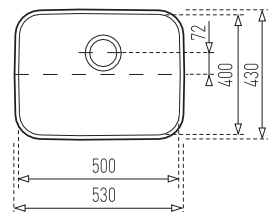
**SPARE WASTE SET TE61001302TEKA R175.00**



Included



Add a pair of angle valves



**BE 40 40 PLUS**

Single bowl undermount sink

**R2,320.00**

list price excl. VAT

- » **Material**  
Made of polished stainless steel
- » **Measurements in mm**  
Overall (w x h) 433 x 433  
Bowl (w x h x d) 406 x 406 x 200  
Thickness: 0,8mm
- » **Installation**  
Undermount  
Base unit of minimum 50cm wide
- » **Included Accessories**  
90mm basket waste  
Round overflow

» **How to Order :**

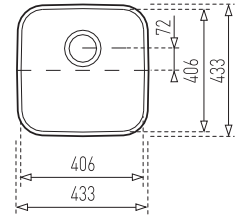
1 x TE10125152 R2,320.00ea

**SPARE WASTE SET TE61001302TEKA R175.00**

Included



Add a pair of angle valves

**BE 34 40 PLUS**

Single bowl undermount sink

**R2,050.00**

list price excl. VAT

- » **Material**  
Made of polished stainless steel
- » **Measurements in mm**  
Overall (w x h) 367 x 427  
Bowl (w x h x d) 340 x 400 x 200  
Thickness: 1mm
- » **Installation**  
Undermount  
Base unit of minimum 450mm wide
- » **Included Accessories**  
90mm basket waste  
Round overflow

» **How to Order :**

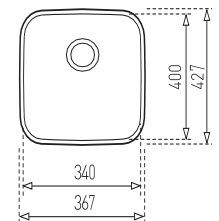
1 x TE10125149 R2,050.00ea

**SPARE WASTE SET TE61001302TEKA R175.00**

Included



Add a pair of angle valves



**BASICO 400**

Single bowl undermount sink

- » **Material**  
Made of unpolished stainless steel
- » **Measurements in mm**  
Overall (w x h) 433 x 433  
Bowl (w x h x d) 406 x 406 x 180  
Thickness: 0.7mm
- » **Installation**  
Undermount  
Base unit of minimum 50cm wide
- » **Included Accessories**  
90mm basket waste  
Round overflow

» **How to Order :**

- 1 x TE10124030 R1,280.00
- 1 x TE61001302TEKA R175.00ea

**SPARE WASTE SET TE61001302TEKA R175.00**

**R1,455.00**

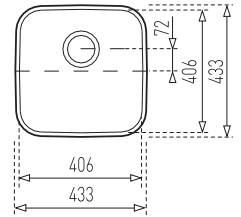
list price excl. VAT



Included



Add a pair of angle valves



**BASICO 280**

Single bowl undermount sink

- » **Material**  
Made of unpolished stainless steel
- » **Measurements in mm**  
Overall (w x h) 307 x 433  
Bowl (w x h x d) 280 x 406 x 180  
Thickness: 0.7mm
- » **Installation**  
Undermount  
Base unit of minimum 45cm wide
- » **Included Accessories**  
90mm basket waste  
Round overflow

» **How to Order :**

- 1 x TE10124048 R1,540.00
- 1 x TE61001302TEKA R175.00ea

**SPARE WASTE SET TE61001302TEKA R175.00**

**R1,715.00**

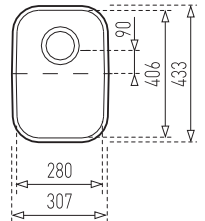
List price excl. VAT



Included



Add a pair of angle valves



**BEX 40 34 T.B.D.**

Single bowl undermount sink

- » **Material**  
Made of polished stainless steel
- » **Measurements in mm**  
Overall (w x h) 427 x 367  
Bowl (w x h x d) 400 x 340 x 200  
Bowl (radius): 25
- » **Installation**  
Undermount  
Base unit of minimum 500mm wide
- » **Included Accessories**  
90mm basket waste  
Round overflow

» **How to Order :**

- 1 x TE10125115 R900.00ea
- 1 x TE61001302 R175.00ea

**SPARE WASTE SET TE61001302TEKA R175.00**

**R1,055.00**

list price excl. VAT

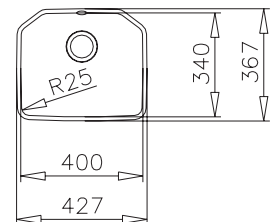
**Price Reduced To Clear**



Included



Add a pair of angle valves





# PREP

## BE 50 40 Oval

Single bowl undermount sink

- » **Material**  
Made of polished stainless steel
- » **Measurements in mm**  
Overall (w x h) 522 x 422  
Bowl (w x h x d) 500 x 400 x 155  
Bowl (radius): 25
- » **Installation**  
Undermount  
Base unit of minimum 600mm wide
- » **Included Accessories**  
90mm basket waste  
Round overflow

» **How to Order :**

1 x TE10125001 R1,500.00ea

**SPARE WASTE SET TE61001302TEKA R175.00**

**R1,500.00**

list price excl. VAT

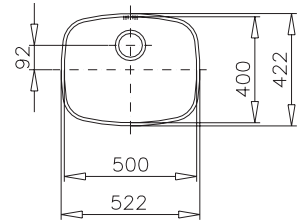
**Price Reduced  
To Clear**



Included



Add a pair of angle valves



BE Double

## BE Double Undermounts

Double the capacity, double the style



### BE 2B 765

Double bowl undermount sink

R4,480.00

list price excl. VAT

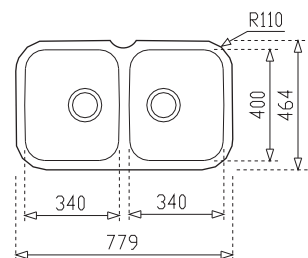
- » **Material**  
Made of polished stainless steel
- » **Measurements in mm**  
Overall (w x h) 780 x 464  
Bowls (w x h x d) 340 x 400 x 200  
Thickness: 1.2mm
- » **Installation**  
Undermount  
Base unit of minimum 80cm wide
- » **Included Accessories**  
90mm basket waste  
Round overflow



Included



Add a pair of angle valves



» **How to Order :**

1 x TE10125150 R4,480.00ea

SPARE WASTE SET TE61001302TEKA R175.00  
TE61001303TEKA R140.00

### BE 625 LHB

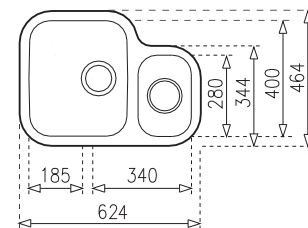
Double bowl undermount sink

R4,000.00

List price excl. VAT

- » **Material**  
Made of unpolished stainless steel
- » **Measurements in mm**  
Overall (w x h x d) 624 x 464 x 200  
Thickness: 1.2mm
- » **Installation**  
Undermount  
Base unit of minimum 800mm wide
- » **Included Accessories**  
90mm basket waste  
Round overflow

**Price Reduced To Clear**



» **How to Order :**

1 x TE10125054 R4,000.00

### BE 625 RHB

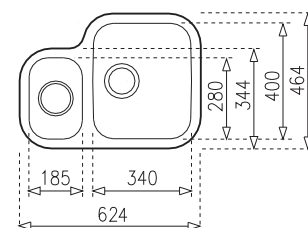
Double bowl undermount sink

R4,000.00

list price excl. VAT

- » **Material**  
Made of unpolished stainless steel
- » **Measurements in mm**  
Overall (w x h x d) 624 x 464 x 200  
Thickness: 1.2mm
- » **Installation**  
Undermount  
Base unit of minimum 800mm wide
- » **Included Accessories**  
90mm basket waste  
Round overflow

**Price Reduced To Clear**



» **How to Order :**

1 x TE10125053 R4,000.00ea

**Teka Spares & Accessories (excl. VAT)**

TE61001302TEKA	90mm waste with overflow	R175.00
TE61001303TEKA	90mm waste without overflow	R140.00
TE20199006	Plug for 90mm waste (old type only)	R110.00

## Sink Care

Problem	Solution	Comments
Routine cleaning- All grades and finishes	BLANCOPOLISH or BLANCOACTIV applied with soft cloth or sponge. Rinse and wipe dry	If possible, use a warm to hand-hot solution. A 5% addition of ammonia is beneficial
Fingerprints- All finishes	Pre-treat marks with alcohol or an organic solvent. Follow immediately with routine cleaning	Minimise re-occurrence by applying a wax or silicone based household polish to the clean, dry surface
Stubborn stains and discolouration- All finishes except coloured Stainless Steel.	Use a small amount of a creamy paste of mild household abrasive cleaner on a cloth made wet with detergent solution as per routine cleaning. Rinse and dry	Repeat several times rather than resorting to a single aggressive cleaning method. If some stubborn stains persist use a fine synthetic scourer pad instead of a cloth. Rub gently
Lime scale deposits from hard water	Prolonged soaking in a 25% vinegar solution or a 5% nitric acid solution. Periodically rub with a nylon bristled brush or fine synthetic scourer pad	Can usually be prevented by regular routine cleaning. Do not allow excessive build-up before treating
Grease, fats and oils- All finishes	Wipe off excess with soft cloth or paper towel. Use a water-borne or water-soluble de-greasing agent followed by Routine cleaning	
Rust marks due to presence of or contact with ferrous materials	If heavy, swab with a sponge moistened with a dilute (10-15%) solution of nitric acid (HN03). Follow by Routine Cleaning	Avoid any contact of ferrous (iron) containing materials with Stainless Steel. Dilute nitric acid (HN03), in strengths of up to 20%, is a "friendly" acid to Stainless Steel. It is the ONLY acid which may be used with no risk to Stainless Steel
Dark oxide scale from welding or heat tints	Pickling and passivating plus thorough water rinsing as outlined previously. Follow by routine Cleaning	Slight heat tints may be removed by repeated application as for stubborn stain and discolouration
Scratches on polished (lined) finishes	Slight scratches - Use a nylon pad loaded with an iron-free abrasive polishing compound. Follow the direction of the original polish lines. Follow with routine cleaning. Deep scratches - coarse abrasives should be used initially. Follow as for slight scratches	Deep scratches will be difficult to remove completely. Do not use metal scourers or wire wool unless they are made from Stainless Steel

It must be appreciated that some of the above suggested procedures will alter the surface appearance of the treated area compared to that of the original surface finish. They should therefore be applied only with due consideration and care

### Cleaning Procedure

Clean the Stainless Steel as often as experience dictates (i.e. when noticeably dull or dirty); and use the simplest cleaning procedure that will effectively "do the job".

- Stainless Steel's best friends are clean water or mild detergent solution, applied with a soft cloth or sponge, rinsed well and wiped dry.
- Routine simple, gentle and inexpensive cleaning will retain both the corrosion resistance and appearance of Stainless Steel through years of exposure and use. Occasionally a small amount of Inox Crème may be used on a soft cloth made wet with the detergent solution to remove stubborn dirt or slight incipient stains. Rub gently

### Cleaning Do's

- Employ regular routine cleaning rather than an occasional aggressive single cleaning.
- Only use propriety brands of cleaners that state "SUITABLE FOR STAINLESS STEEL", such as BLANCOPOLISH.
- Always rinse and dry as the final step in a cleaning procedure

### Cleaning Don'ts

- Do not use coarse abrasive powders.
- Do not use metallic scourers or brushes with metal bristles.
- Do not use the so termed "silver cleaners".
- Do not use acids (except nitric acid in specific instances).

### Storage of Products

Product research has proved that certain household products which may be stored underneath a sink, can lead to damage to the sink's base. Chlorine is the major culprit and can be found in: chlorine for swimming pools; household bleach; bathroom cleaning products like toilet cleaners, mildew treatments and tile cleaners; kitchen cleaning products - especially liquid cleaners; powders for dishwashers and laundry detergents. Preserve the life and beauty of your sink by storing these products away from the sink area in a well ventilated cupboard that is child-proof.

Splashzone (Pty) Ltd.  
Unit 5  
Mount Edgecombe Industrial Estate  
65 Marshall Drive  
Mount Edgecombe  
Durban

These products are imported from Europe and as a result are subject to fluctuations in currency. While we endeavour to keep prices unchanged we reserve the right to change listed prices without notification. Please always confirm prices at the time of placing your order.

While Splashzone has used its best endeavors to ensure that the information provided in this price list - including (but not limited to) technical specifications, measurements, colours and prices - are accurate and up to date at the time of issue, does not warrant that it is correct or complete. We reserve the right to make corrections and changes without notification and unless otherwise stated and agreed upon in writing, Splashzone makes no warranties of any kind, express or implied, that good sold are suitable for any particular purpose or application under any specific condition. It is recommended that every item should be thoroughly tested by the purchaser to determine performance suitability before use of goods.

