

EYE SQUAD

Help Iris & Lash get their project back from Professor Blur!



HEY, KIDS!

Learn all about your eyes through A MAZE, A WORD SEARCH, HIDDEN OBJECTS, A MATCH GAME and MORE!

PARENTS:

1 IN 4 KIDS HAS AN UNDIAGNOSED VISION ISSUE
Learn how eye exams can help put your family in first place.

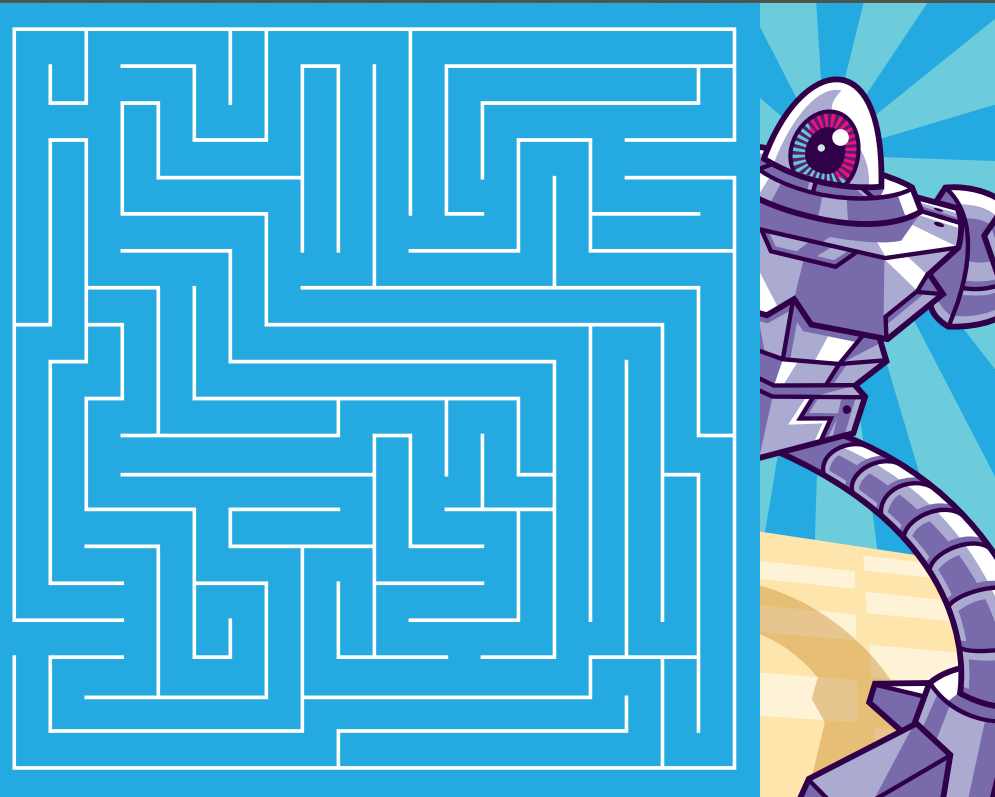
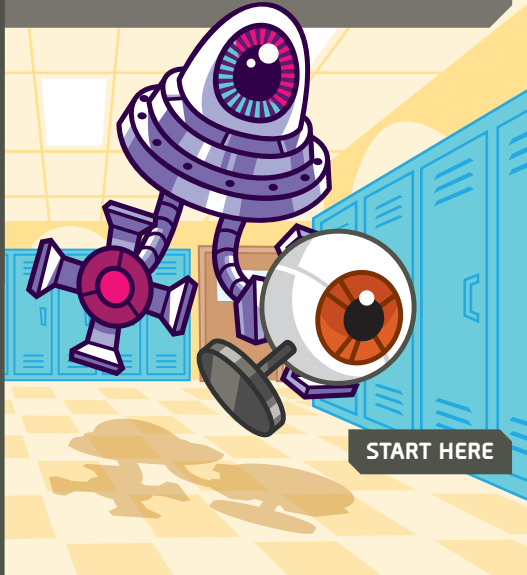


WELCOME TO EYE SQUAD!

Greetings, new recruit. I'm 20/20, your trusty robot companion! Professor Blur will do anything to keep kids from seeing clearly. He's sabotaged the science fair and taken Iris and Lash's model of the human eye. It's up to you to help Eye Squad get it back!

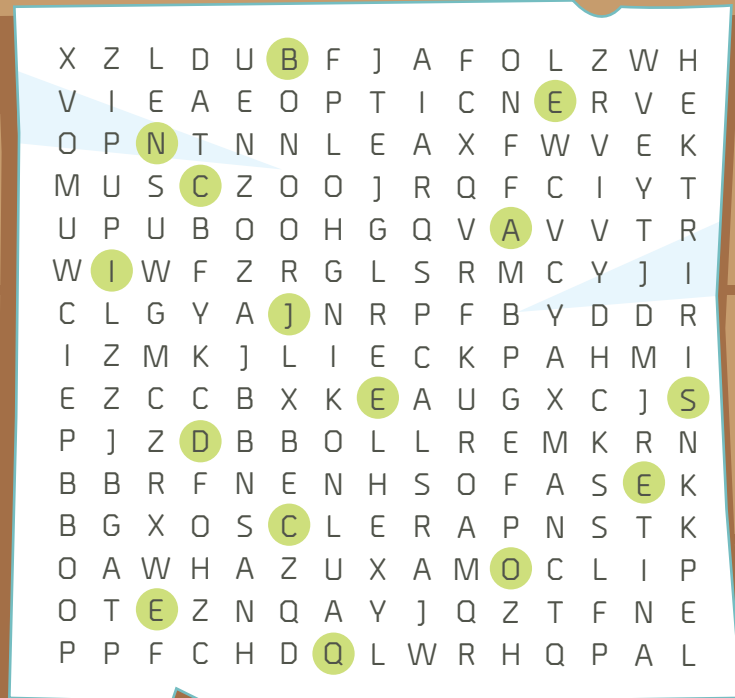
BLUR BOT TRACKER

The Blur Bot has taken Iris and Lash's eye model! Eye Squad needs your help to track down the bot before it hands it off to Professor Blur. Can you trace its location?



THE SEARCH BEGINS

Professor Blur's gone, but he left behind a clue: an eyeball anatomy word search. We need your help to find all seven words. Then use the highlighted letters in each one to identify which classroom the model is hidden in!



ANSWER: SCIENCE

WORD LIST:

HIDDEN WORD:

- IRIS
- CORNEA
- PUPIL
- RETINA
- LENS
- SCLERA
- OPTIC NERVE



STAY FOCUSED

Your eyes focus on 50 different objects every second!



YOU GOT SOME NERVE

Your optic nerve contains more than one million nerve cells!



SIGHT WITH BITE

Shark corneas are so similar to ours they have been used in human eye surgery!

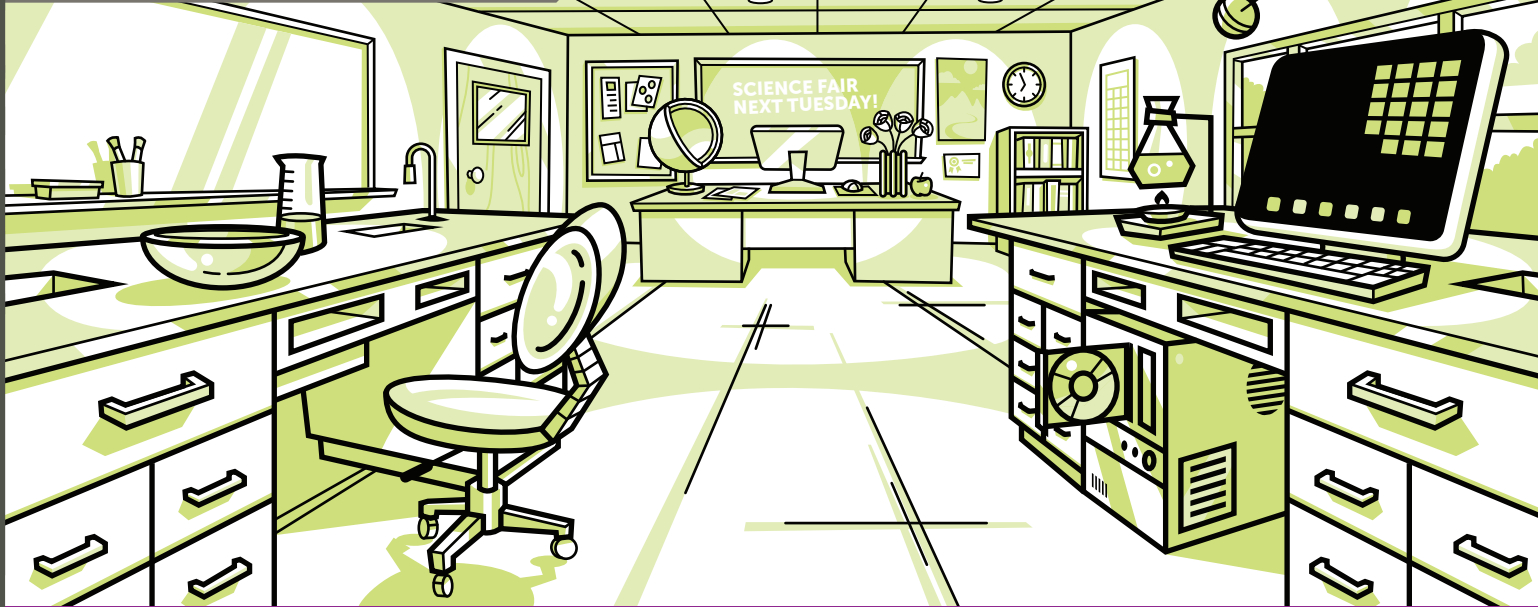


IN A FLASH

Your eye is the fastest-contracting muscle in the body, moving in less than 1/100th of a second!

SCAN THE ROOM

We've found the right classroom, but 20/20's scanner vision is jammed. Can you search the room and find where each piece of the model is hidden?



FIND THESE PIECES:



EYE-CATCHING NAMES

You found all the pieces? Awesome! Can you help Iris and Lash put the model back together before the science fair starts? Match each piece with the correct name and description.

- A CORNEA**
Clear front window of the eye.
- B PUPIL**
The darkest part of the eye where light enters.
- C LENS**
Transparent structure behind the iris that focuses light onto the retina.
- D SCLERA**
White, protective outer layer of the eye.
- E RETINA**
Nerve layer that lines the back of the eye and converts light into electrical signals.
- F OPTIC NERVE**
Nerve that sends the retina's electrical signals directly to the brain.
- G IRIS**
Colored part of the eye that adjusts the size of your pupil depending on the amount of light.



ANSWERS: Top Left to Bottom Right - E, C, D, B, F, G, A

Congratulations! Iris & Lash's science fair project was rebuilt and got first place thanks to you!

You can win too with an eye exam. Then pick up your official Eye Squad Certificate of Acceptance from a Pearle Vision eye care expert to become our newest recruit!



Discover how an eye exam can unlock your child's potential.

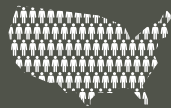


When it comes to the health of the family, there's one area that's often overlooked – their eyes. Pearle Vision is here to ensure that every member of your family gets the eye care and expertise they need to see success.

Below are a few reasons why an annual eye exam is important for your child:

175,000 preschoolers

struggle with common yet untreated vision problems



80% of what your child learns in school

is actually learned through their eyesight

A+

90% of kids ages 5 and younger

have never had a comprehensive eye exam



25% of students in kindergarten – 6th grade

have visual problems that can impede learning



Nearly 60% of vision problems

go undetected in a school vision screening



24% of parents wait until symptoms appear

before scheduling an eye exam for their child



We Work with All Major Health & Vision Plans and Welcome Your Current Prescription. Schedule your family's eye exams today by making an appointment at pearlevision.com.*

EST. 1961
PEARLE VISION

*Eye exams available at the Independent Doctor of Optometry located at or next to Pearle Vision. Doctors in some states are employed by Pearle Vision.
© 2020 Pearle Vision. All Rights Reserved. 3347-001E-KIDBR