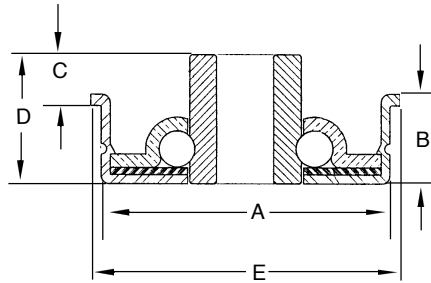


# EAGLE BEARING



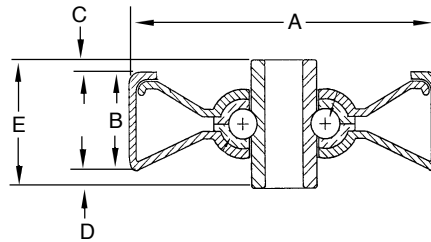
**EAGLE BEARING, LTD.**

P.O. BOX 327  
 NEWBURGH, IN 47629-0327  
 TEL: (812) 491-9667  
 FAX: (812) 491-9668  
 www.eaglebearing.com  
 eaglesales@eaglebearing.com



## CONVEYOR BEARINGS

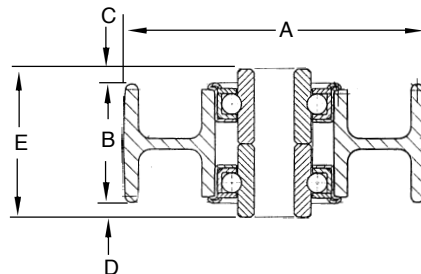
| Item No.    | A     | B     | C     | D     | E     | Bore            | Tube OD | Tube Wall |
|-------------|-------|-------|-------|-------|-------|-----------------|---------|-----------|
| CF1280-250  | 1.281 | 11/32 | 7/32  | 9/16  | 1-3/8 | 0.566-0.558 Rnd | 1.375   | 0.049     |
| CF1280-312H | 1.281 | 11/32 | 7/32  | 9/16  | 1-3/8 | 0.317-0.322 Hex | 1.375   | 0.049     |
| CF1775-312  | 1.775 | 23/64 | 11/64 | 17/32 | 1.900 | 0.315-0.319 Rnd | 1.90    | 0.065     |
| CF1775-437H | 1.775 | 23/64 | 11/64 | 17/32 | 1.900 | 0.450-0.451 Hex | 1.90    | 0.065     |



## CONVEYOR SKATE WHEELS

| Item No.      | Size            | A       | B   | C & D | E     | Bore        | Load Rating |
|---------------|-----------------|---------|-----|-------|-------|-------------|-------------|
| SW2000-20#-7B | 1-15/16" x 5/8" | 1 15/16 | 5/8 | 3/32  | 13/16 | 0.255-0.260 | 50 LBS      |
| SW2000-18#-7B | 1-15/16" x 5/8" | 1 15/16 | 5/8 | 3/32  | 13/16 | 0.255-0.260 | 75 LBS      |
| SW2000-15#-8B | 1-15/16" x 5/8" | 1 15/16 | 5/8 | 3/32  | 13/16 | 0.255-0.260 | 100 LBS     |

SW2000-15#-8B also available with 5/16" Bore.



## PLASTIC PALLET WHEELS

| Item No.    | A     | B      | C & D | E     | Bore        |
|-------------|-------|--------|-------|-------|-------------|
| PW-2880-375 | 2 7/8 | 1 3/32 | 9/32  | 1 3/8 | 0.376-0.381 |

Bearings may be ordered dry, with light oil or grease packed lubricant.