

ROLLER BEARINGS

EAGLE BEARING



EAGLE BEARING, LTD.

P.O. BOX 327
 NEWBURGH, IN 47629-0327
 TEL: (812) 491-9667
 FAX: (812) 491-9668
 www.eaglebearing.com
 eaglesales@eaglebearing.com

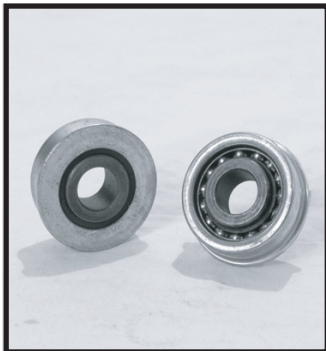


Item No.	Manufacturer Number	Description	Dimensions in Inches		
			Outside Dia. A	Bore B	Width C
87410	Roller Bearing		1 3/8"	3/4"	1 1/2"
87411	Roller Bearing		1 3/8"	3/4"	1 3/4"
87413	Roller Bearing		1 3/8"	3/4"	2 1/2"
87420	Roller Bearing		1 3/8"	3/4"	3"
87430	Roller Bearing		1 3/16"	3/4"	1 1/4"
87431	Roller Bearing		1 3/16"	3/4"	1 3/8"
87432	Roller Bearing		1 3/16"	3/4"	1 7/8"

PRECISION BEARINGS



Item No.	Manufacturer Number	Description	Dimensions in Millimeters		
			Outside Dia. A	Bore B	Width C
86952	204PY3 8728	Agricultural	45.225 mm	16.03 mm	18.67 mm



Item No.	Manufacturer Number	Description	Dimensions in Millimeters		
			Outside Dia. A	Bore B	Width C
86940	56F40P	Open Back	44.7 mm	16 mm	17.25 mm

BEARING SIZING & MODIFICATIONS

- For information on other bearing sizes and types, contact our sales office.
- Any bearing can be modified to meet special requirements.

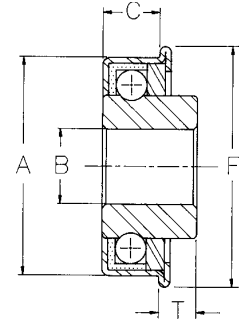
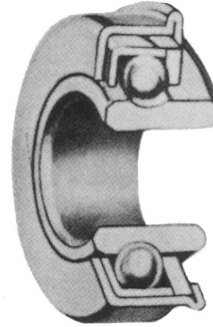
FLANGED BALL BEARINGS

EAGLE BEARING



EAGLE BEARING, LTD.

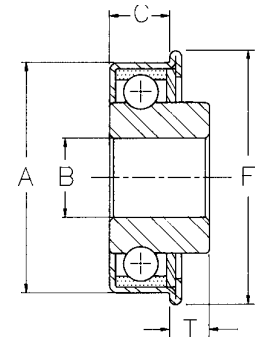
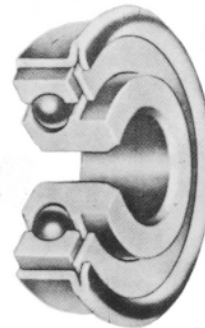
P.O. BOX 327
 NEWBURGH, IN 47629-0327
 TEL: (812) 491-9667
 FAX: (812) 491-9668
 www.eaglebearing.com
 eaglesales@eaglebearing.com



Single Grooved Bearing

Single Grooved Bearing

Item No.	Size	Description	Dimensions in Inches					Radial Load Rating at 300 RPM in Lbs.
			Outside Dia. A	Bore B	Front Extension T	C	Flange Dia. F	
83212	3/8" x 1-1/8"		1.126-1.132	0.376-0.381	0.118-0.132	0.293-0.297	1-1/8"	65
84210	7/16" x 1-1/8"	w/ Ext Race (13/16")	1.126-1.132	0.438-0.444	0.118-0.132	0.293-0.297	1-1/8"	65
84211	7/16" x 1-1/8"		1.126-1.132	0.438-0.444	0.118-0.132	0.293-0.297	1-1/8"	65
85201	1/2" x 1-1/8"	w/ Black Seal	1.126-1.132	0.502-0.508	0.118-0.132	0.293-0.297	1-1/8"	65
85202	1/2" x 1-1/8"		1.126-1.132	0.502-0.508	0.118-0.132	0.293-0.297	1-1/8"	65
85214	1/2" x 1-1/8"	w/ Ext Race (1")	1.126-1.132	0.501-0.506	0.100-0.120	0.293-0.297	1-1/8"	65
85215	1/2" x 1-3/8"		1.375-1.380	0.501-0.507	0.115-0.135	0.378-0.386	1-3/8"	100
85220	1/2" x 1-1/8"		1.126-1.132	0.502-0.506	0.120-0.130	0.293-0.297	1-1/8"	65
86210	5/8" x 1-3/8"		1.375-1.380	0.628-0.633	0.115-0.135	0.378-0.386	1-3/8"	100
87210	3/4" x 1-3/8"		1.375-1.380	0.752-0.757	0.115-0.135	0.350-0.358	1-3/8"	100



Double Grooved Bearing

Double Grooved Bearing: Inner wire race is grooved to take heavier loads at higher RPM.

Item No.	Size	Description	Dimensions in Inches					Radial Load Rating at 600 RPM in Lbs.
			Outside Dia. A	Bore B	Front Extension T	F C	Flange Dia.	
81210	1" x 2"		2.130-2.146	1.008-1.017	0.626-0.634	0.457-0.449	2"	420
85219	1/2" x 1-3/8"	w/ Black Seal	1.375-1.380	0.501-0.507	0.115-0.135	0.378-0.382	1-3/8"	200
85221	1/2" x 1-3/8"		1.376-1.381	0.501-0.505	0.115-0.135	0.311-0.319	1-3/8"	200
85230	1/2" x 1-1/8"	w/ Black Seal	1.126-1.132	0.501-0.505	0.116-0.136	0.293-0.297	1-1/8"	120
86213	5/8" x 1-3/8"		1.376-1.381	0.626-0.630	0.115-0.135	0.311-0.319	1-3/8"	220
86216	5/8" x 1-3/8"	w/ Black Seal	1.375-1.380	0.626-0.632	0.115-0.135	0.378-0.382	1-3/8"	200
87213	3/4" x 1-3/8"		1.376-1.381	0.752-0.756	0.115-0.135	0.311-0.319	1-3/8"	220
87214	3/4" x 1-3/8"	w/ Black Seal	1.375-1.380	0.751-0.757	0.130-0.150	0.378-0.382	1-3/8"	200

BEARING MODIFICATIONS: The listed bearings can be modified to meet special requirements. Bores of other diameters, hexagonal and square holes, inner races of special width, inner races with tapped set screw holes, etc., can be furnished.

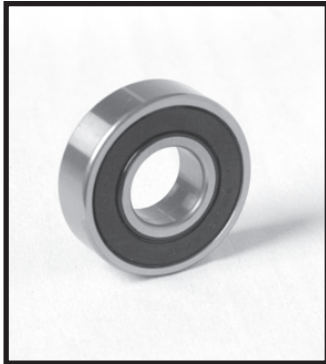
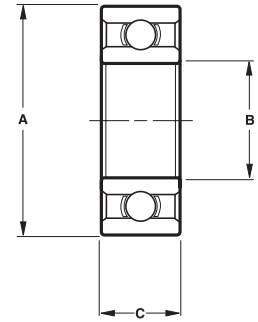
DOUBLE SEALED PRECISION BEARINGS

EAGLE BEARING

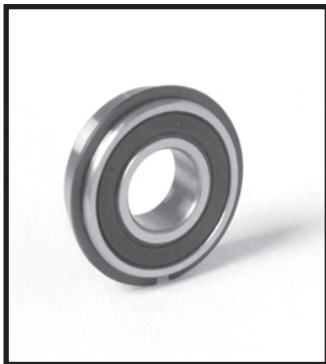


EAGLE BEARING, LTD.

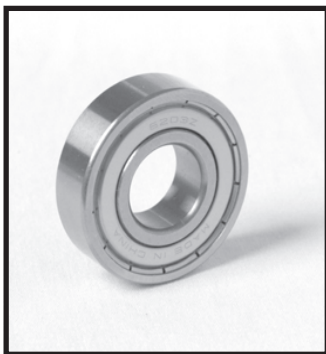
P.O. BOX 327
 NEWBURGH, IN 47629-0327
 TEL: (812) 491-9667
 FAX: (812) 491-9668
 www.eaglebearing.com
 eaglesales@eaglebearing.com



Item No.	Manufacturer Number	Description	Dimensions in Millimeters		
			Outside Dia. A	Bore B	Width C
82930	6205-2RS		52 mm	25 mm	15 mm
82931	6204-2RS		47 mm	20 mm	14 mm
82932	99502H		34.925 mm	15.875 mm	11 mm
82933	6203-2RS		40 mm	15.875 mm	12 mm
82936	6203-2RS-5/8"	w / 5/8" Bore	40 mm	15.75 mm	12 mm
85940	1616-2RS		28.575 mm	12.7 mm	9.525 mm



Item No.	Manufacturer Number	Description	Dimensions in Millimeters		
			Outside Dia. A	Bore B	Width C
86912	99502H NR	w / Snap Ring	34.925 mm	15.875 mm	11 mm
81923	1641-2RS NR	w / Snap Ring	50.8 mm	25.4 mm	14.27 mm
82939	1635-2RS NR	w / Snap Ring	44.5 mm	12.65 mm	19 mm
85941	1621-2RS NR	w / Snap Ring	34.925 mm	12.7 mm	11.113 mm



Item No.	Manufacturer Number	Description	Dimensions in Millimeters		
			Outside Dia. A	Bore B	Width C
82934	6203ZZ	w / Metal Shields	40 mm	17 mm	12 mm
82937	P204RR6 A 4362	w / Metal Shields	45.25 mm	15.50 mm	19 mm
82938	6305ZZ	w / Metal Shields	62 mm	17 mm	25 mm
82940	99502H-RST	w / Metal Shields	34.925 mm	15.875 mm	11 mm
82941	6203-2RST-10	w / Metal Shields	60 mm	17 mm	12 mm
87960	P204RR6	w / Metal Shields	45.225 mm	19.05 mm	15.5 mm

BEARING SIZING & MODIFICATIONS

- For information on other bearing sizes and types, contact our sales office.
- Any bearing can be modified to meet special requirements.

CUP, CONE & SEAL

EAGLE BEARING



EAGLE BEARING, LTD.

P.O. BOX 327
 NEWBURGH, IN 47629-0327
 TEL: (812) 491-9667
 FAX: (812) 491-9668
 www.eaglebearing.com
 eaglesales@eaglebearing.com



Item No.	Manufacturer Number	Description	Dimensions in Millimeters		
			Outside Dia. A	Bore B	Width C
87418	LM11910	Cup	45.237 mm	35.83 mm	12.065 mm



Item No.	Manufacturer Number	Description	Dimensions in Millimeters		
			Outside Dia. A	Bore B	Width C
87419	LM11949	Cone	38.5 mm	19.05 mm	16.637 mm
87421	LM11949-G	Cone w / Grease	38.5 mm	19.05 mm	16.637 mm



Item No.	Manufacturer Number	Description	Dimensions in Millimeters		
			Outside Dia. A	Bore B	Width C
87422	11178VHY	Seal	45.3 mm	27 mm	12 mm

BEARING SIZING & MODIFICATIONS

- For information on other bearing sizes and types, contact our sales office.
- Any bearing can be modified to meet special requirements.

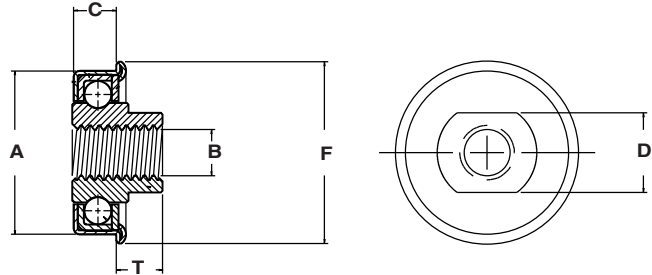
CHAIR BALL BEARINGS

EAGLE BEARING

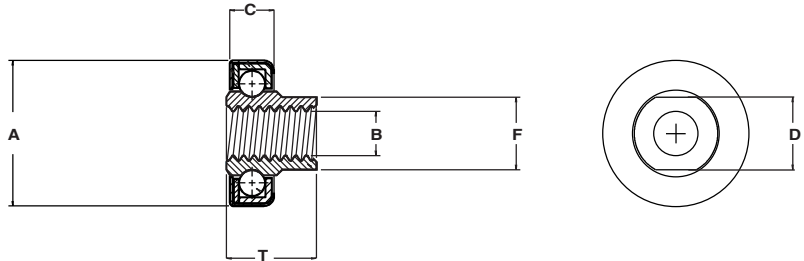


EAGLE BEARING, LTD.

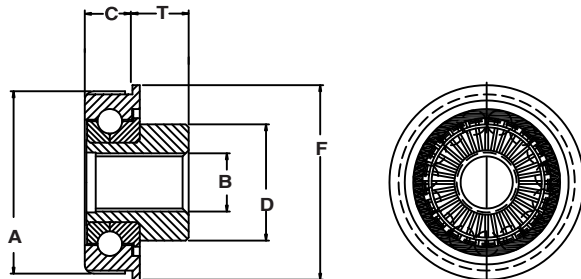
P.O. BOX 327
 NEWBURGH, IN 47629-0327
 TEL: (812) 491-9667
 FAX: (812) 491-9668
 www.eaglebearing.com
 eaglesales@eaglebearing.com



Item No.	Size	Description	Dimensions in Inches					
			Outside Dia. A	Bore B	Front Extension T	C	Flange Dia. F	D
89250	1 1/8" x 5/16"	Rocker Bearing	1.128 - 1.124	.319	.333 - .329	.293 - .289	1.268 - 1.252	.555 - .547
89251	1 1/8" x 1/4"	Rocker Bearing	1.132 - 1.126	.264	.325 - .321	.297 - .293	1.268 - 1.252	.555 - .547



Item No.	Size	Description	Dimensions in Inches					
			Outside Dia. A	Bore B	T	C	F	D
89252	7/8" x 1/4"	Rocker Bearing	.874 - .866	.264	.539 - .528	.266 - .258	.433	.430



Item No.	Size	Description	Dimensions in Inches					
			Outside Dia. A	Tread B	Front Extension T	C	Flange Dia. F	D
83218	1 1/8" x 3/8"	Kauriled Bearing	1.135-1.125	3/8" - 16	.327 - .317	.345 - .335	1.250 - 1.240	.750 - .740

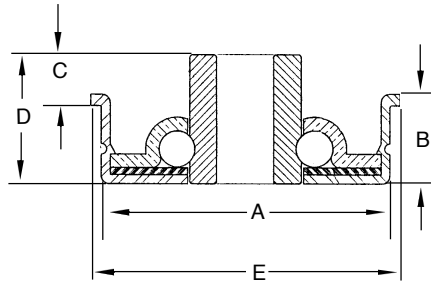
BEARING MODIFICATIONS: The listed bearings can be modified to meet special requirements. Bores of other diameters, hexagonal and square holes, inner races of special width, inner races with tapped set screw holes, etc., can be furnished.

EAGLE BEARING



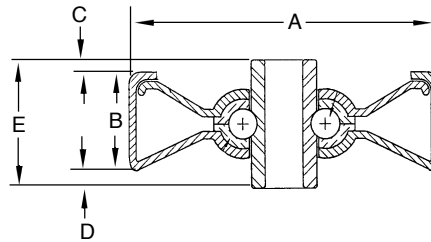
EAGLE BEARING, LTD.

P.O. BOX 327
 NEWBURGH, IN 47629-0327
 TEL: (812) 491-9667
 FAX: (812) 491-9668
 www.eaglebearing.com
 eaglesales@eaglebearing.com



CONVEYOR BEARINGS

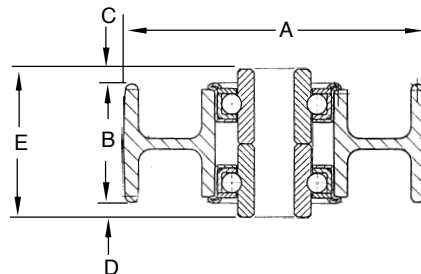
Item No.	A	B	C	D	E	Bore	Tube OD	Tube Wall
CF1280-250	1.281	11/32	7/32	9/16	1-3/8	0.566-0.558 Rnd	1.375	0.049
CF1280-312H	1.281	11/32	7/32	9/16	1-3/8	0.317-0.322 Hex	1.375	0.049
CF1775-312	1.775	23/64	11/64	17/32	1.900	0.315-0.319 Rnd	1.90	0.065
CF1775-437H	1.775	23/64	11/64	17/32	1.900	0.450-0.451 Hex	1.90	0.065



CONVEYOR SKATE WHEELS

Item No.	Size	A	B	C & D	E	Bore	Load Rating
SW2000-20#-7B	1-15/16" x 5/8"	1 15/16	5/8	3/32	13/16	0.255-0.260	50 LBS
SW2000-18#-7B	1-15/16" x 5/8"	1 15/16	5/8	3/32	13/16	0.255-0.260	75 LBS
SW2000-15#-8B	1-15/16" x 5/8"	1 15/16	5/8	3/32	13/16	0.255-0.260	100 LBS

SW2000-15#-8B also available with 5/16" Bore.



PLASTIC PALLET WHEELS

Item No.	A	B	C & D	E	Bore
PW-2880-375	2 7/8	1 3/32	9/32	1 3/8	0.376-0.381

Bearings may be ordered dry, with light oil or grease packed lubricant.