

It Takes Us to make a Home



JS

RAHATH RESIDENCE

About Us

A Bangalore based, famous for layouts and independent house developments, "JS Developers Pvt, Ltd", is a name trusted for quality. we have the experience and expertise to turn your desires and dreams into reality.

We proudly announce launching our ambitious mega running project "JS Royal Residency" at Bhanugudi centre, Kakinada. We are now launching "JS Rahat Residency", a new place to dwell in an ambiance of peace and tranquility. A home built aesthetically to ensure optimum comfort adequate privacy and ample ventilation with all modern amenities planned, designed and developed having your comfort in mind.

Our prestigious Projects:



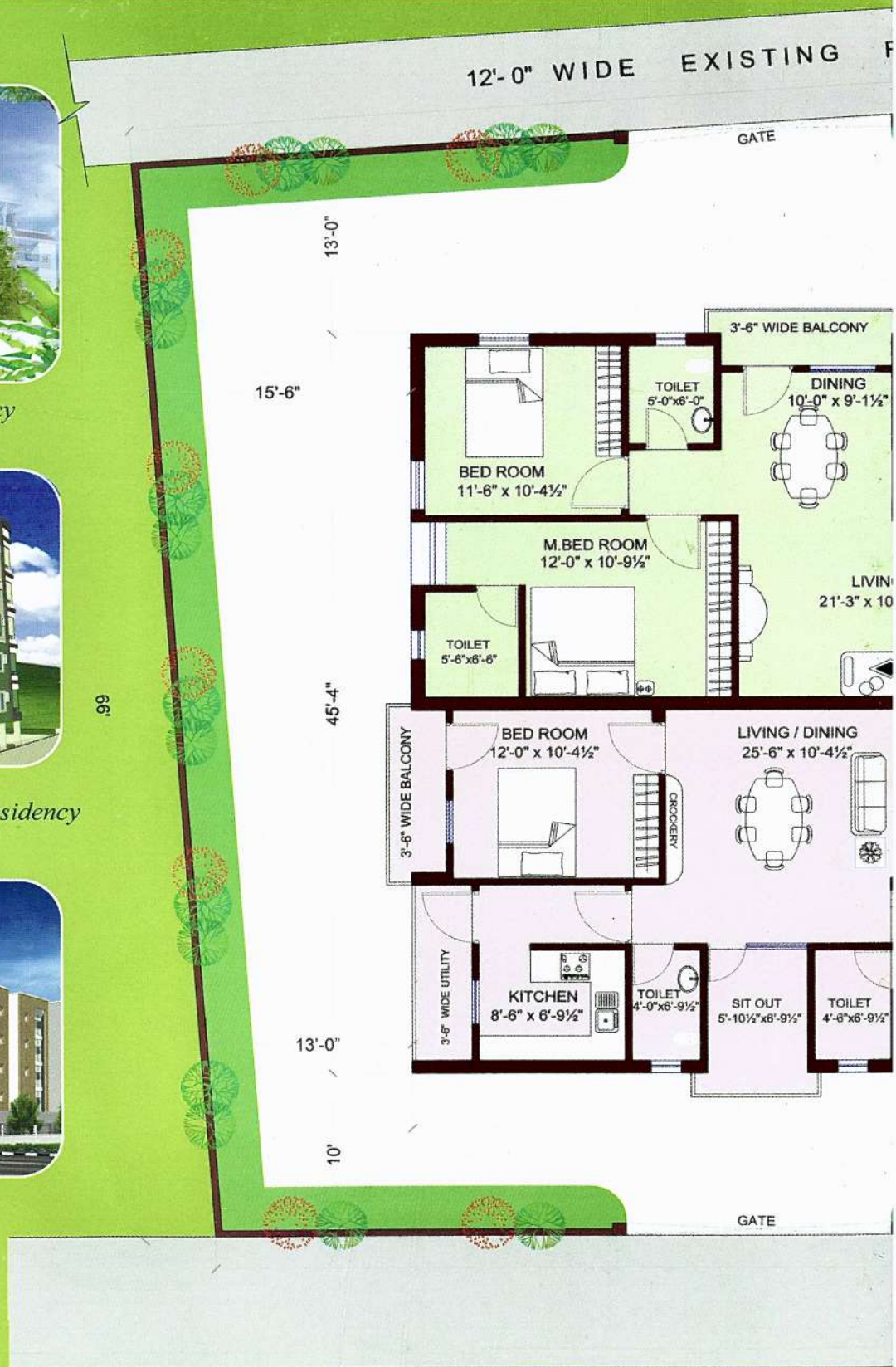
Running project: *JS Royal Residency* at Bhanugudi



Newly Launching Project: *JS Rahat Residency* at Samalkot



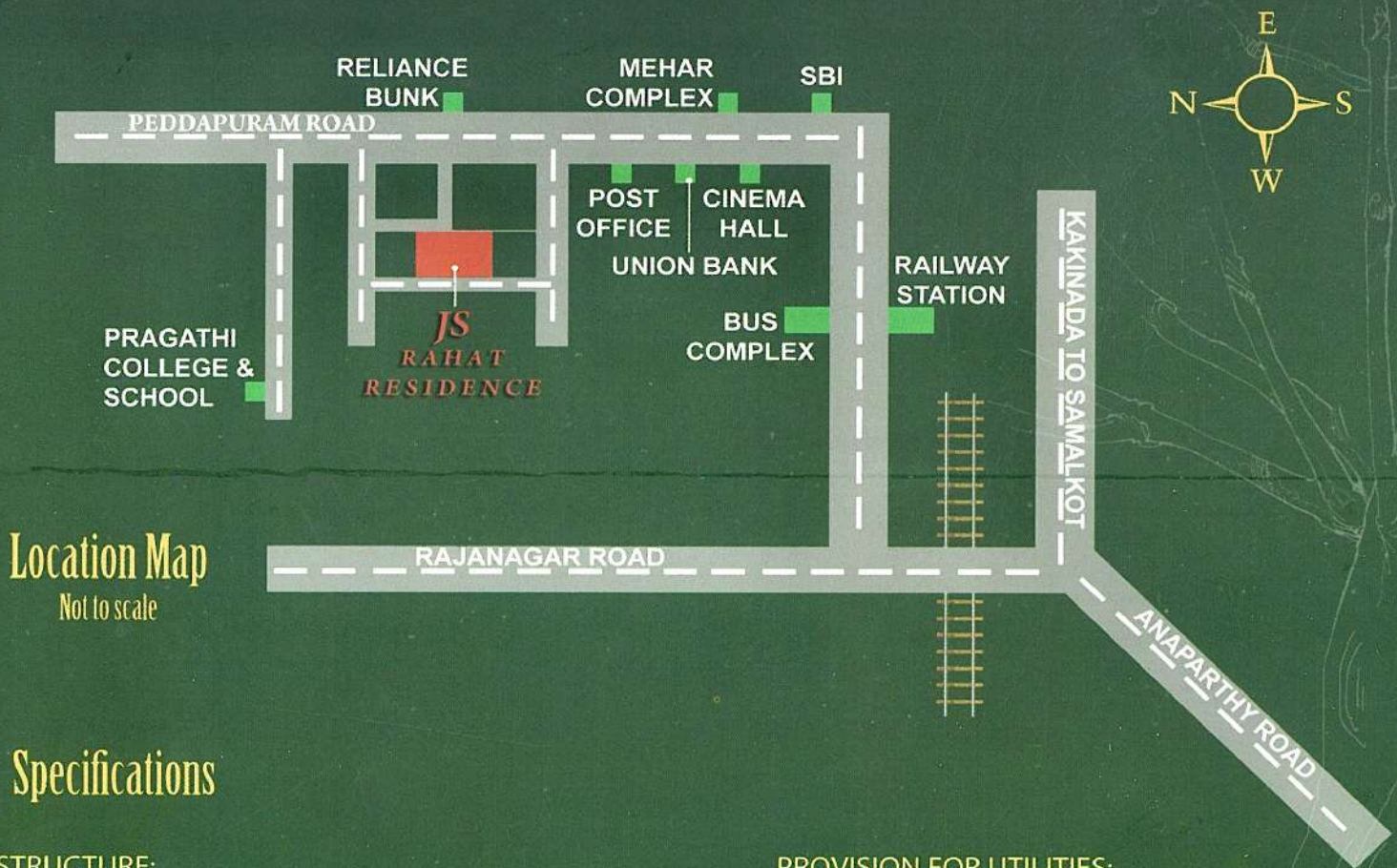
Upcoming Project at Turangi Kakinada



Typical Floor Plan



Area Statements	Flat No.	1	2	3	4
	Area in Sft.	1250	1250	1200	1190



Location Map

Not to scale

Specifications

STRUCTURE:

Reinforced Cement Concrete.

SUPER STRUCTURE:

Brick Masonary in Cement Mortar.

DOORS & WINDOWS:

Main door- Teak Wood paneled with Brass Hardware.
Other Doors- Country Wood frame and Flush shutters with Aluminium hardware.
Windows- Country Wood frame with Glazed shutters.

FLOORING:

Vitrified Tiles for Living, Dining and Bedrooms.
Antiskid Ceramic Tiles for Toilets.
Ceramic tiles for Kitchen and Balconies.

KITCHEN:

20 mm Thk Polished Granite slab for platform with Stainless Steel Sink.

DADOING:

Kitchen- 2'-0" Ht above the Granite platform.
Toilets- upto 7' height.

Site Address :

18-1-40, Ganapathi Nagar
Opp. Reliance Petrol Bunk
Peddapuram Road, Samalkot - 533 440
Tel: 0884 2373091, Mob: 98483 94999
E-mail: jafar@jsdevelopers.net, sadiq@jsdevelopers.net
jsduranikkd@gmail.com

PROVISION FOR UTILITIES:

Washing Machine in utility platform.
Exhaust fan in kitchen.
Geyser point.

TOILET FITTINGS & ACCESSORIES:

Light coloured Sanitaryware of Hindustan or equivalent.
Jaquar or equivalent for plumbing.

ELECTRICAL:

Standard Electrical cables.
Switches from Anchor or equivalent.

PAINTING:

Interior-Plastic Emulsion
Exterior-Textured paint..

FEATURES:

Designed for natural lighting and ventilation with 100% vastu in each flat.
24 hours water supply.

LIFT:

Standard Lift with 6 passengers capacity.

PROMOTERS, ARCHITECTS & ENGINEERS

JS DEVELOPERS (P) LTD

Office : # 20-1-43, Main Road, Opp. S.R.M.T.,
Kakinada - 533 001, Tel: 0884 2373091, Mob: 98483 94999
E-mail: jafar@jsdevelopers.net, sadiq@jsdevelopers.net
jsduranikkd@gmail.com
Web: www.jsdevelopers.net