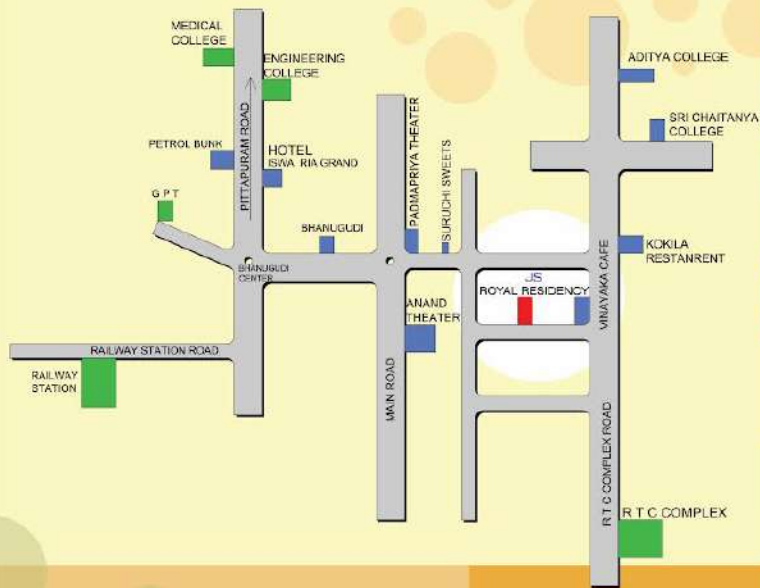


LOCATION MAP LOCATION MAP



Location
not to scale



PROMOTERS, ARCHITECTS & ENGINEERS

JS DEVELOPERS (P) LTD

20-1-43, Main Road, Opp. S.R.M.T., Kakinada - 533 001

Tel: 0884 2373091, Mob: 98483 94999

E-mail: dumi@jsdevelopers.com, support@jsdevelopers.com

Web: www.jsdevelopers.com

This Brochure is conceptual in nature and is by no means a legal offering. The promoters reserve the right to change, delete or add any specifications or plan mentioned herein.

*Enhance
Your Lifestyle*

JS
ROYAL RESIDENCY



ABOUT US

A Bangalore based, famous for layouts and independent house developments, "JS Developers Pvt. Ltd", is a name trusted for quality. We have the experience and expertise to turn your desires and dreams into reality.

We proudly announce launching our ambitious mega project "JS Royal Residency" a new place to dwell in an ambience of peace and tranquility.

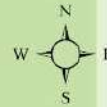
A home built aesthetically to ensure optimum comfort adequate privacy and ample ventilation with all modern amenities planned, designed and developed having your comfort in mind.

JS Royal Residency, the right choice @ the right place @ the right time @ the right price.

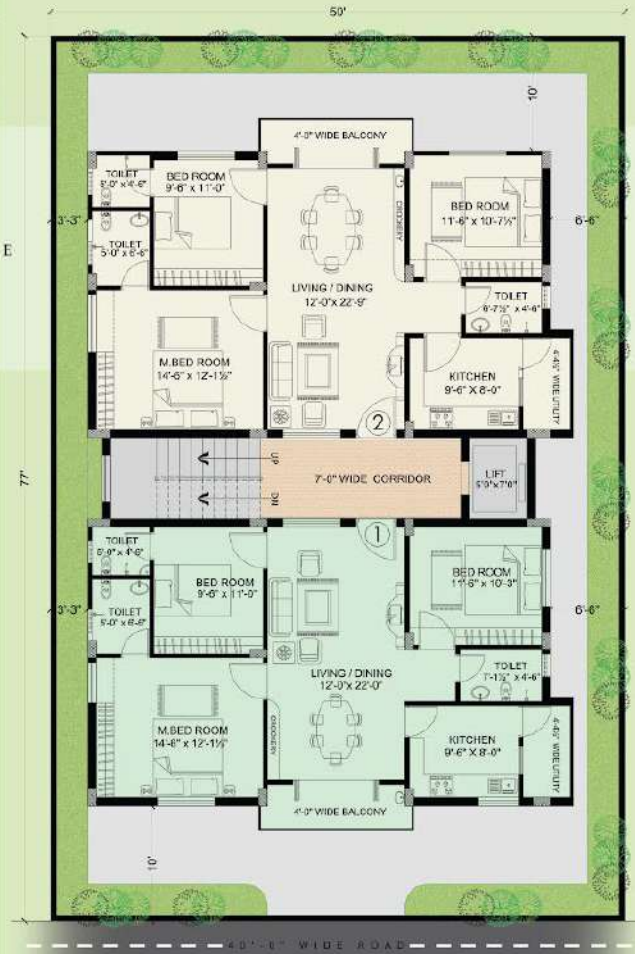


SPECIFICATIONS

- STRUCTURE:**
 - Reinforced Cement Concrete.
- SUPER STRUCTURE:**
 - Brick Masonry in Cement Mortar.
- DOORS & WINDOWS:**
 - Main door- Teak Wood paneled with Brass Hardware.
 - Other Doors- Country Wood frame and Flush shutters with Aluminium hardware.
 - Windows- Country Wood frame with Glazed shutters.
- FLOORING:**
 - Vitrified Tiles for Living, Dining and Bedrooms.
 - Antiskid Ceramic Tiles for Toilets.
 - Ceramic Tiles for Kitchen and Balconies.
- KITCHEN:**
 - 20 mm Tsk Polished Granite slab for platform with Stainless Steel Sink.
- DADDING:**
 - Kitchen- 2' 0" H above the Granite platform.
 - Toilets- upto 7' height.
- PROVISION FOR UTILITIES:**
 - Washing Machine in utility platform.
 - Exhaust fan in kitchen.
 - Geyser point.
- TOILET FITTINGS & ACCESSORIES:**
 - Light coloured Sanitaryware of Hiedustan or equivalent.
 - Jaquer or equivalent for plumbing.
- ELECTRICAL:**
 - Standard Electrical cables.
 - Switches from Anchor or equivalent.
- PAINTING:**
 - Interior-Plastic Emulsion
 - Exterior-Textured paint.
- FEATURES:**
 - Designed for natural lighting and ventilation with 100% vastu in each flat.
 - 24 hours water supply.
- LIFT:**
 - Standard Lift with 6 passengers capacity.



TYPICAL FLOOR PLAN



AREA STATEMENTS	Flat No.	1	2
AREA STATEMENTS	Area in Sft.	1054	1064