



1967 BUICK ASSEMBLY INSTRUCTION MANUAL

SPECIAL - SKYLARK 43000 - 44000 SERIES TRANSMISSIONS - CLUTCH & LOWER CONTROLS (SECTION 7)

<u>INDEX</u>	<u>PAGE NO.</u>	<u>INDEX</u>	<u>PAGE NO.</u>
Transmission Identification and Usage Chart	7-1.2	Clutch Pedal and Controls Installation - 446 G.S.	7-9.1
Transmission Lower Controls 3 Speed Manual - Installation See 9-3.1 for Upper Controls	7-2.1	Clutch - Information Assembly Specials and LeSabre	7-10.1
Transmission Lower Controls Automatic - Installation See 9-4.1 for Upper Controls	7-3.1	Clutch - Information Assembly 446 - G.S.	7-11.1
Transmission Controls 3 Speed Floor Shift	7-4.1	Transmission Oil Filler and Vacuum Modulator Pipe Installation	7-12.1
Transmission Controls (Manual) 4 Speed Floor Shift - 446 G.S.	7-5.1	*Transmission Oil Filler and Vacuum Modulator Pipes 3 Sp. Auto ST-400 Trans. Installations	7-13.1
Transmission Controls - Automatic Console Shift. Installations and Adjustments	7-6.1		
Transmission Oil Cooler Pipe Lines Installation - 2 Speed Automatic ST-300	7-7.1		
Clutch Pedal and Controls Installation - Reg. Jobs	7-8.1		

5-3-66

PART NUMBER-1379480

PAGE NUMBER- 7-1.0



1967 BUICK ASSEMBLY INSTRUCTION MANUAL

SPECIAL - SKYLARK 43000 - 44000 SERIES TRANSMISSION - CLUTCH & LOWER CONTROLS (SECTION 7)

1967 TRANSMISSION USAGE - CHART

TRANS.	PART NO.	SHOWN ON	MAN. CODE	V6		V8		SPORT WAGON V8 340		GRAN SPORT V8 400			
				REG	K33	300		340		REG	K33	REG	K33
						REG	K33	REG	K33				
3 Spd Man	3860040	3859000	QP	X									
3 Spd Man	3860097	3859000	RJ			X		X		X			
3 Spd Man	9777226	9781076	DB									X	
4 Spd Man	3879668		HE									X	
2 Spd Auto	1377111	1379925	LJ	X									
2 Spd Auto	1377112	1381790	LZ		X								
2 Spd Auto	1377116	1379925	MJ			X							
2 Spd Auto	1377124	1381790	MZ				X						
2 Spd Auto	*1384311	1379925	*MM					X					
2 Spd Auto	*1384312	1381790	*MW						X				
2 Spd Auto	1377119	1379925	MR						X				
2 Spd Auto	1377125	1381790	MY							X			
3 Spd Auto	8625665	8624886	BW						X				
3 Spd Auto	8625675	8625670	BA								X	N.A.	

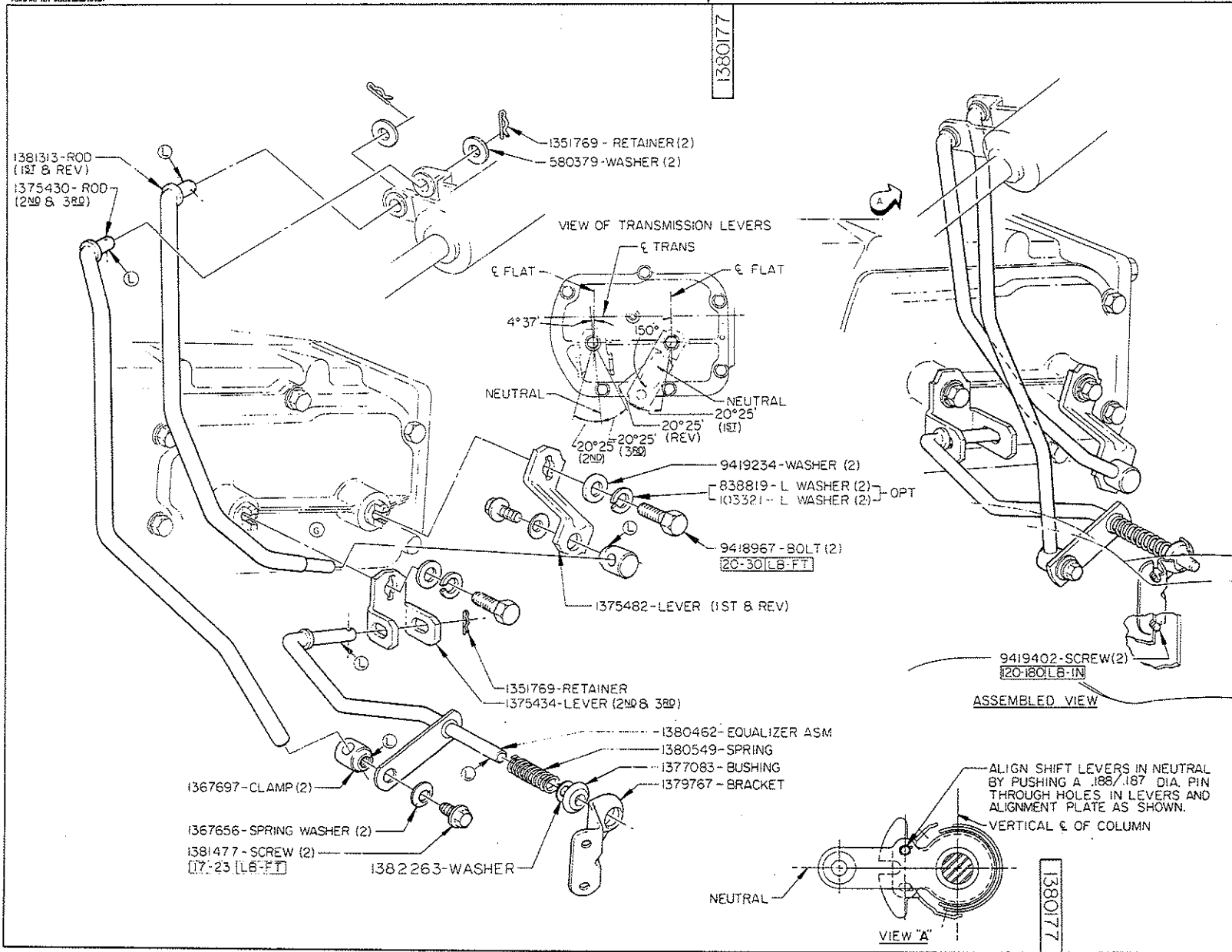
*ECR 71473

*1-4-67

PART NUMBER-1379480

PAGE NUMBER- 7-1.2

BUICK MOTOR DIVISION
GENERAL MOTORS CORPORATION
WARREN, MICH., U.S.A.



1380177

1380177

DATE	SYM.	REVISION RECORD	AUTH.	DR.	CHK.
12-8-65	A	REMOVED			
12-8-65	B	9419402 TO 9419404			
8-14-66	C	1375430 TO 1375434			
12-20-66	D	1380462 TO 1380462			
8-22-66	E	1375430 REVISED			
8-22-66	F	NOTE REVISED TO 803 SHEET			
8-22-66	G	1382263 WASHER ADDED TO 803 SHEET			
7-25-66	H	1377404 REMOVED			

CONTROL ADJUSTMENT

- 1 SET TRANSMISSION CONTROL LEVERS IN NEUTRAL POSITION. (SEE VIEW A).
- 2 SET BOTH SHIFT LEVERS ON TRANSMISSION ASM IN NEUTRAL POSITION.
- 3 TIGHTEN SCREW ON EACH ADJUSTING SWIVEL CLAMP TO SPECIFIED TORQUE.

LUBRICATE AREAS INDICATED (L) WITH 9985024 BEFORE ASSEMBLY.

DO NOT SCALE		REPORT ERRORS	
TOLERANCES UNLESS OTHERWISE SPECIFIED		— ALLOWED ON TWO PLACE DECIMALS	
ε .010 ALLOWED ON THREE PLACE DECIMALS		COMMERCIAL TOLERANCES APPLY TO STANDARD PARTS - ROLLED SECTIONS - SHEET METAL GAGES - DRILLED AND PUNCHED HOLES - BURR ALL DRILLED HOLES. COUNTERSINK ALL TAPPED HOLES .030 X 90°.	
DWG. DATE	SCALE	DR.	J. ALLEN
12-8-65		CHK.	
FIRST USED 1967 33-34		APPR.	
43-44	LESS 46		
REFERENCE	BL-15804	APPR.	
3-SPD. MANUAL			
NAME TRANS. LOWER CONTROL INFORMATION ASSEMBLY			
PART NO.	INDEX		
1380177	7-2.1		



1967 BUICK ASSEMBLY INSTRUCTION MANUAL

SPECIAL - SKYLARK 43000 - 44000 SERIES

TRANSMISSION - CLUTCH & LOWER CONTROLS (SECTION 7)

ASSEMBLY PRECAUTIONS - (CLUTCH TO TRANSMISSION)

Install two guide pins in the rear face of the clutch housing long enough to guide the transmission input shaft as it enters the housing. This prevents possible damage to the clutch release bearing, yoke assembly, and clutch driven member assembly.

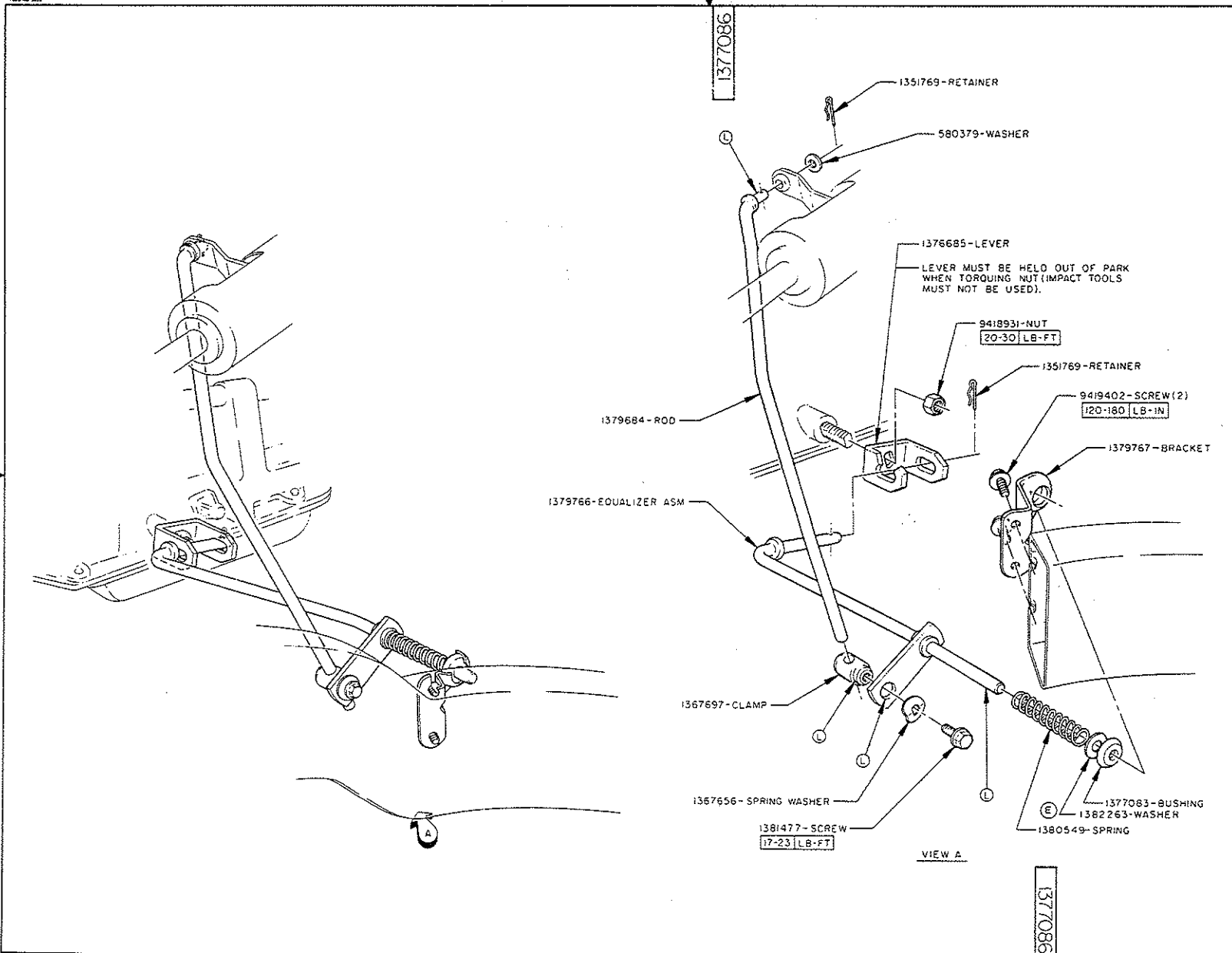
Input shaft must slide through the clutch release bearing freely. Do not force shaft through the bearings. Random torque attaching transmission to housing bolts.

*9-20-66

PART NUMBER-1379480

PAGE NUMBER- 7-2.2

DIVISION
 GENERAL MOTORS CORPORATION
 FLINT, MI 48801 U.S.A.



DATE	SYMBOL	REVISION RECORD	AUTH.	INDEX
1964-08	A	X-REMOVED		
1964-08	B	REVISED TO 1380549		
1964-08	C	CONTROL ADJUSTMENT		
1967-03	D	NOTE REVISED		
1967-03	E	1367656-SPRING WASHER		

LUBRICATE AREAS INDICATED (L) WITH 9985024 LUB BEFORE ASSEMBLY.

- CONTROL ADJUSTMENT**
- 1 SET TRANSMISSION SELECTOR LEVER IN DRIVE DETENT.
 - 2 SET STEERING COLUMN SHIFT LEVER AGAINST DRIVE STOP.
 - 3 TIGHTEN SCREW IN CLAMP TO SPECIFIED TORQUE.

DO NOT SCALE TOLERANCES UNLESS OTHERWISE SPECIFIED
 REPORT ERRORS UNLESS OTHERWISE SPECIFIED
 ± ALLOWED ON TWO PLACE DECIMALS
 ± .010 ALLOWED ON THREE PLACE DECIMALS
 COMMERCIAL TOLERANCES APPLY TO STANDARD PARTS-ROLLED SECTIONS-SHEET METAL GAGES-DRILLED AND PUNCHED HOLES.
 BURR ALL DRILLED HOLES. COUNTERSINK ALL TAPPED HOLES .030 X 90°.

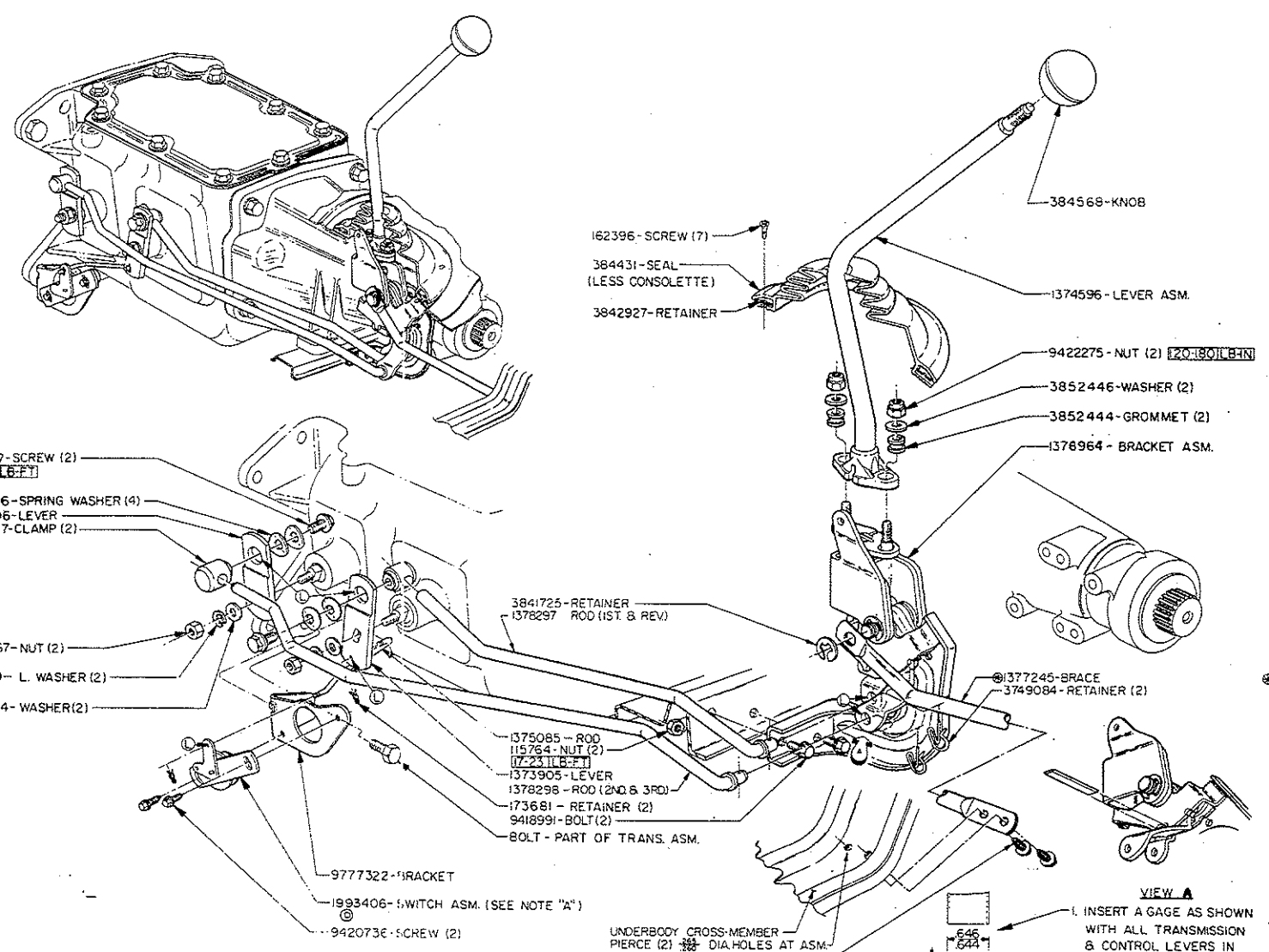
DRG. DATE 10-5-65 SCALE NONE DR. J. ALLEN
 FIRST USED 33-34 CR. *J. Allen*
 1967-03-44-46 APPR. *J. Allen*
 REFERENCE BL-15815 APPR. *J. Allen*

ST-300 AUTO.	
NAME TRANSMISSION LOWER CONTROL INFORMATION ASSEMBLY	
PART NO. 1377086	INDEX 7-3.1

C2V3 P4515

1380199

REV	DATE	DESCRIPTION	BY	CHK
1				
2				
3				
4				
5				
6				
7				
8				
9				
10				
11				
12				
13				
14				
15				
16				
17				
18				
19				
20				
21				
22				
23				
24				
25				
26				
27				
28				
29				
30				
31				
32				
33				
34				
35				
36				
37				
38				
39				
40				
41				
42				
43				
44				
45				
46				
47				
48				
49				
50				



1380199

NOTE "A"
 INSTALL BACK-UP LIGHT SWITCH WITH MOUNTING SLOTS CENTERED. ADJUST AS REQUIRED TO ASSURE THAT LIGHTS ARE ON WITH TRANSMISSION SHIFTED INTO REVERSE BUT NEVER WHEN SHIFTED INTO ANY OTHER SHIFT POSITION.

○ CENTERLINE OF BRACE MUST BE PARALLEL WITH CENTERLINE OF CAR WITHIN .025 INCH.

LUBRICATE AREAS INDICATED ○ WITH 9985Q24 BEFORE ASSEMBLY.

VIEW A

1. INSERT A GAGE AS SHOWN WITH ALL TRANSMISSION & CONTROL LEVERS IN NEUTRAL POSITION.
2. TIGHTEN SHIFT RODS AT TRANSMISSION.

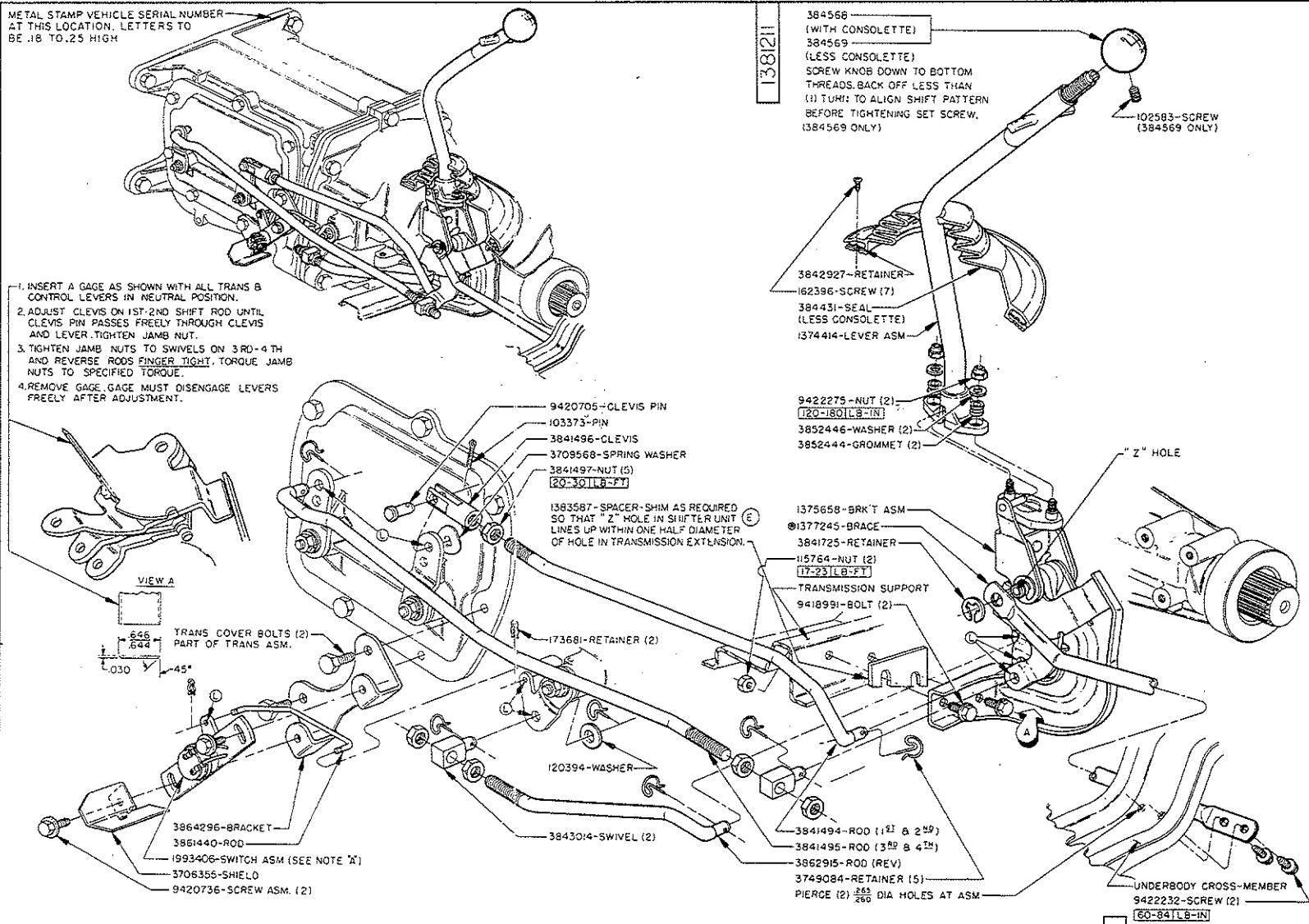
REV	DATE	DESCRIPTION	BY	CHK
1				
2				
3				
4				
5				
6				
7				
8				
9				
10				
11				
12				
13				
14				
15				
16				
17				
18				
19				
20				
21				
22				
23				
24				
25				
26				
27				
28				
29				
30				
31				
32				
33				
34				
35				
36				
37				
38				
39				
40				
41				
42				
43				
44				
45				
46				
47				
48				
49				
50				

1380199 7-4

METAL STAMP VEHICLE SERIAL NUMBER
AT THIS LOCATION. LETTERS TO
BE .18 TO .25 HIGH

1. INSERT A GAGE AS SHOWN WITH ALL TRANS B CONTROL LEVERS IN NEUTRAL POSITION.
2. ADJUST CLEVIS ON 1ST, 2ND SHIFT ROD UNTIL CLEVIS PIN PASSES FREELY THROUGH CLEVIS AND LEVER. TIGHTEN JAMB NUT.
3. TIGHTEN JAMB NUTS TO SWIVELS ON 3RD-4TH AND REVERSE RODS FINGER TIGHT. TORQUE JAMB NUTS TO SPECIFIED TORQUE.
4. REMOVE GAGE. GAGE MUST DISENGAGE LEVERS FREELY AFTER ADJUSTMENT.

DUNLAP MOTOR DIVISION
GENERAL MOTORS CORPORATION
DETROIT, MICH. U. S. A.



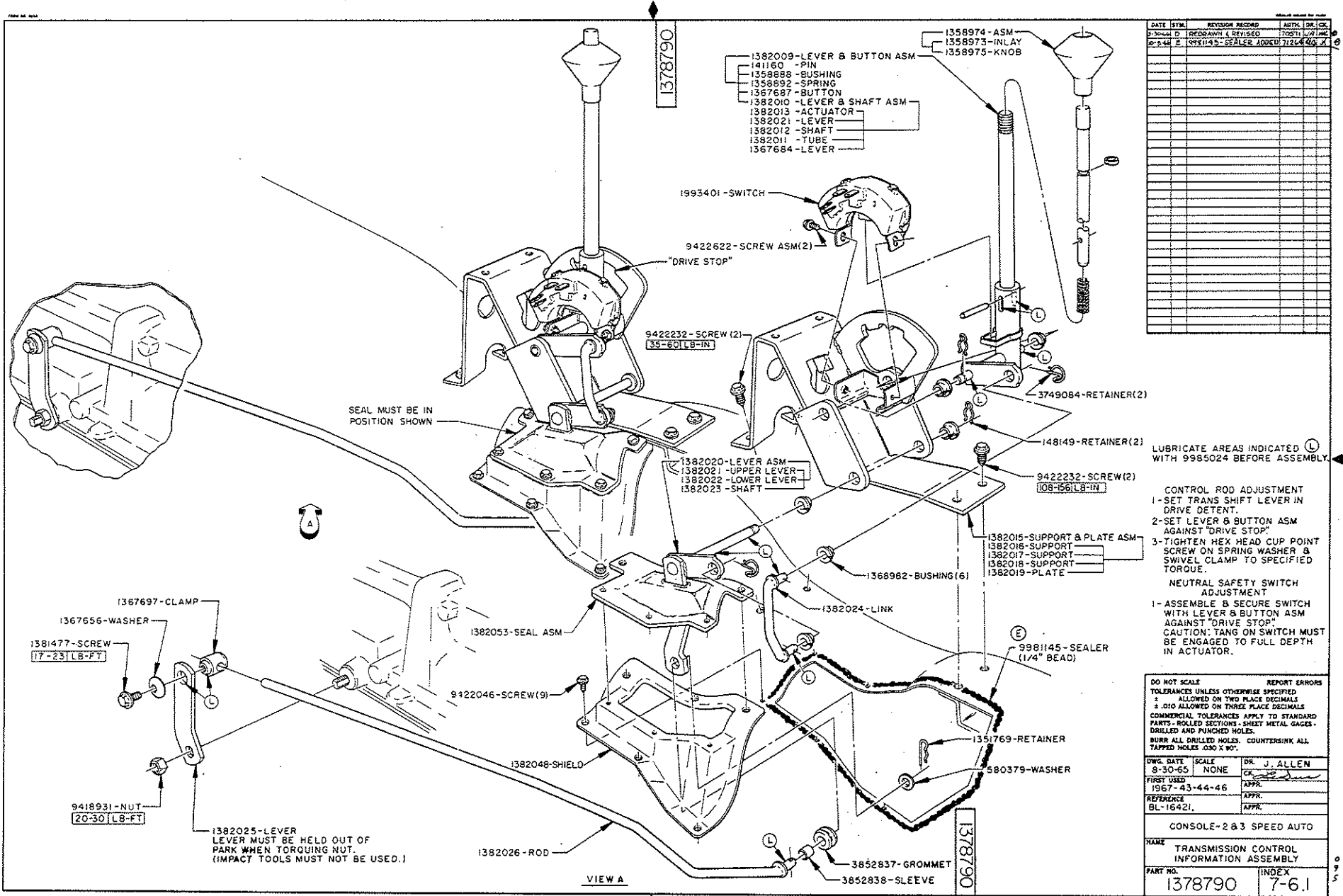
DATE	BY	REVISION RECORD	AUTH.	CHKD.
		SKGA NOTE DELETED		
		SKGB NOTE ADDED		
		SKGC 1383383 TO 14035404 DATED 10/1/58		
		SKGD 173311 & 9420712 E		
		138479 REMOVED		
		1385587 & INFO. ADDED		

NOTE "A"
INSTALL BACK-UP LIGHT SWITCH WITH
MOUNTING SLOTS CENTERED. ADJUST
AS REQUIRED TO ASSURE THAT LIGHTS
ARE ON WITH TRANSMISSION SHIFTED
INTO REVERSE, BUT NEVER ON WHEN
SHIFTED INTO ANY OTHER SHIFT
POSITION.

◎ CENTERLINE OF BRACE MUST BE
PARALLEL WITH CENTERLINE OF CAR
WITHIN .025 INCH.

LUBRICATE AREAS INDICATED (L) WITH
9985024 BEFORE ASSEMBLY.

DO NOT SCALE	REPORT ERRORS
TOLERANCES UNLESS OTHERWISE SPECIFIED = ALLOWED ON TWO PLACE DECIMALS = .010 ALLOWED ON THREE PLACE DECIMALS COMMERCIAL TOLERANCES APPLY TO STANDARD PARTS - ROLLED SECTIONS - SHEET METAL GAGES - DRILLED AND PUNCHED HOLES. Burr ALL DRILLED HOLES. COUNTERSINK ALL TAPPED HOLES .030 X 90°.	
DRG. DATE 1-24-66	SCALE DR. R. SHIER
FIRST USED 1967-46	CHKD.
REFERENCE BL-16346	APPR.
	APPR.
4-SPEED MANUAL	
NAME TRANSMISSION CONTROL INFORMATION ASM	
PART NO. 1381211	INDEX 7-51



DATE	BY	REVISION RECORD	APPR.	DR.	CK.
8-30-64	D	DRAWING REVISED		JOHN L. J. MC	
8-30-64	E	KEYWAY SEALER ADDED		71264400	J.

LUBRICATE AREAS INDICATED (L) WITH 9985024 BEFORE ASSEMBLY.

- CONTROL ROD ADJUSTMENT
- 1- SET TRANS SHIFT LEVER IN DRIVE DETENT.
 - 2- SET LEVER & BUTTON ASM AGAINST "DRIVE STOP"
 - 3- TIGHTEN HEX HEAD CUP POINT SCREW ON SPRING WASHER & SWIVEL CLAMP TO SPECIFIED TORQUE.

- NEUTRAL SAFETY SWITCH ADJUSTMENT
- 1- ASSEMBLE & SECURE SWITCH WITH LEVER & BUTTON ASM AGAINST "DRIVE STOP"
- CAUTION: TANG ON SWITCH MUST BE ENGAGED TO FULL DEPTH IN ACTUATOR.

DO NOT SCALE TOLERANCES UNLESS OTHERWISE SPECIFIED

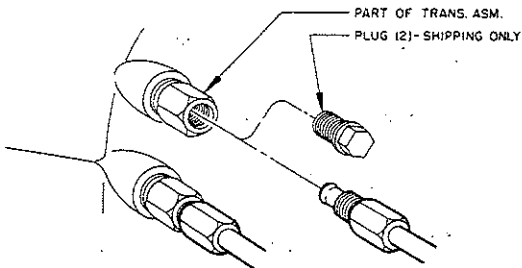
- * ALLOWED ON TWO PLACE DECIMALS
- * .010 ALLOWED ON THREE PLACE DECIMALS

COMMERCIAL TOLERANCES APPLY TO STANDARD PARTS - ROLLED SECTIONS - SHEET METAL GAGES - DRILLED AND PUNCHED HOLES. BURR ALL DRILLED HOLES. COUNTERSINK ALL TAPPED HOLES .030 X 90°.

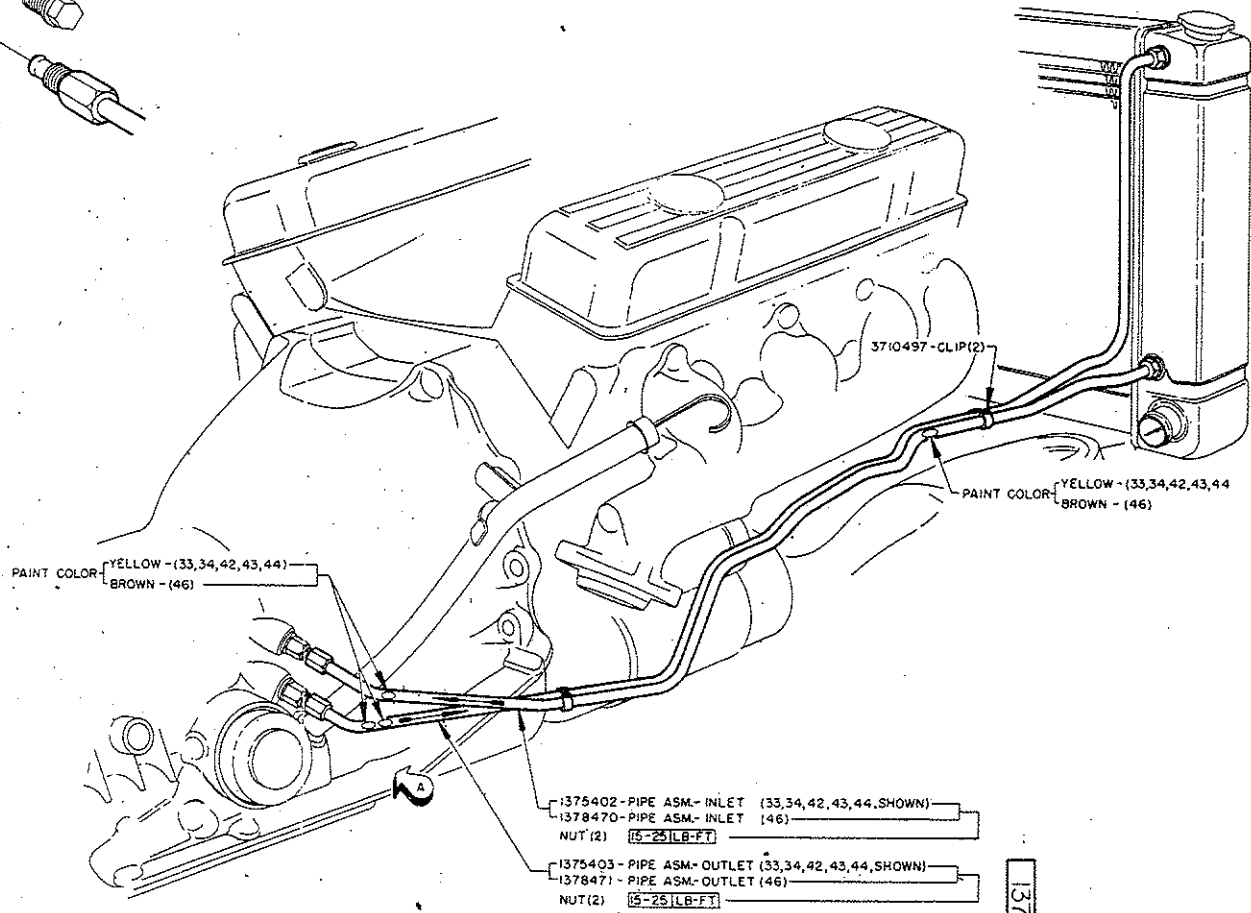
DWG. DATE	SCALE	DR.	J. ALLEN
8-30-65	NONE	CK.	
FIRST USED		APPR.	
1967-43-44-46		APPR.	
REFERENCE		APPR.	
BL-16421.		APPR.	

CONSOLE-2 & 3 SPEED AUTO	
NAME	TRANSMISSION CONTROL INFORMATION ASSEMBLY
PART NO.	1378790
INDEX	7-6.1

137789I



VIEW A



DATE	BY	REVISION	REMOVED	AUTH.	OR (C)

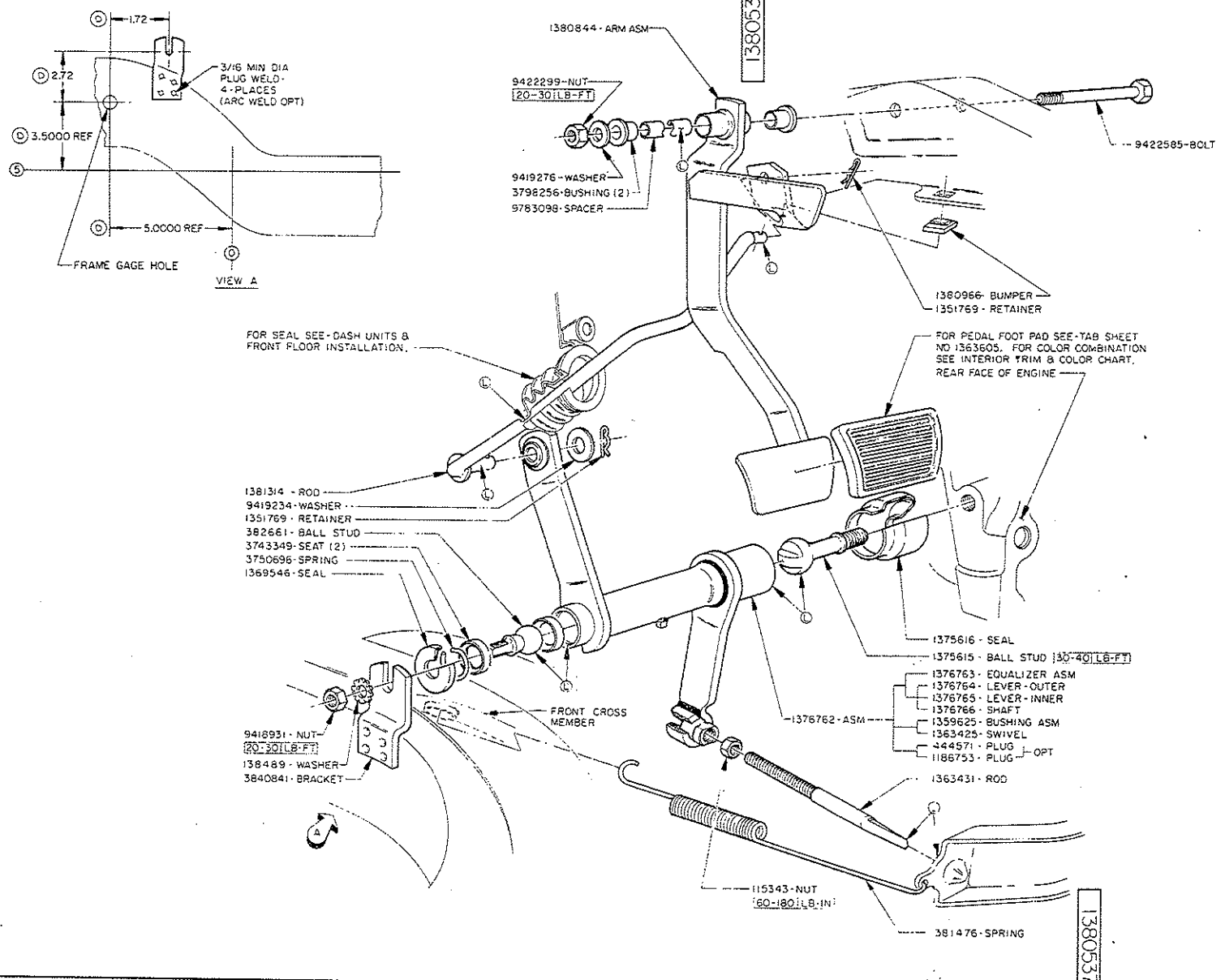
ALL LINES & CONNECTIONS MUST
 BE FREE OF LEAKS UNDER
 OPERATING CONDITIONS.

 LINES MUST NOT CONTACT CHASSIS
 COMPONENTS.

DO NOT SCALE		REPORT ERRORS
TOLERANCES UNLESS OTHERWISE SPECIFIED		
± ALLOWED ON TWO PLACE DECIMALS		
±.010 ALLOWED ON THREE PLACE DECIMALS		
COMMERCIAL TOLERANCES APPLY TO STANDARD PARTS - ROLLED SECTIONS - SHEET METAL GAGES - DRILLED AND PUNCHED HOLES.		
Burr All Drilled Holes. Countersink All Tapped Holes .030 X 90°.		
DWG. DATE	SCALE	DR. NIERGARTH
9-9-65	1/1	CK. <i>[Signature]</i>
FIRST USED	1967	APPR.
33,34,42,43,44,46		APPR.
REFERENCE	BL-15730 BL-1560B	APPR.
ST-300		
NAME TRANSMISSION OIL COOLER PIPES INFORMATION ASSEMBLY		
PART NO.	INDEX	
137789I	7-7.1	

137789I

DATE	BY	REVISION RECORD	AUTH	DR	CK
11-14-64	A	REVISED			
11-14-64	B	1380537 TO 1381314			
11-14-64	C	1380537 TO 1381314			
		1380537 REMOVED			
		1380537 REVISED TO			
		(DETAIL & NOTE ADDED)			
11-14-64	D	1380537, 7.22, 6.0000 REF.			
		4.0000 REF. REMOVED			
		1.72, 2.72, 3.0000 REF.			
		13.0000 REF. ADDED			



CLUTCH LASH ADJUSTMENT WITH CLUTCH PEDAL AT FULL RELEASE POSITION CONTACTING RUBBER BUMPER STOP, ADJUST CLUTCH RELEASE ROD TO GIVE ZERO LASH AT CLUTCH PEDAL. BACK OFF CLUTCH RELEASE ROD APPROX 2-TURNS TO GIVE .62-.76 LASH AT PEDAL PAD. TIGHTEN LOCKNUT ON CLUTCH RELEASE ROD TO TORQUE SPECIFIED.

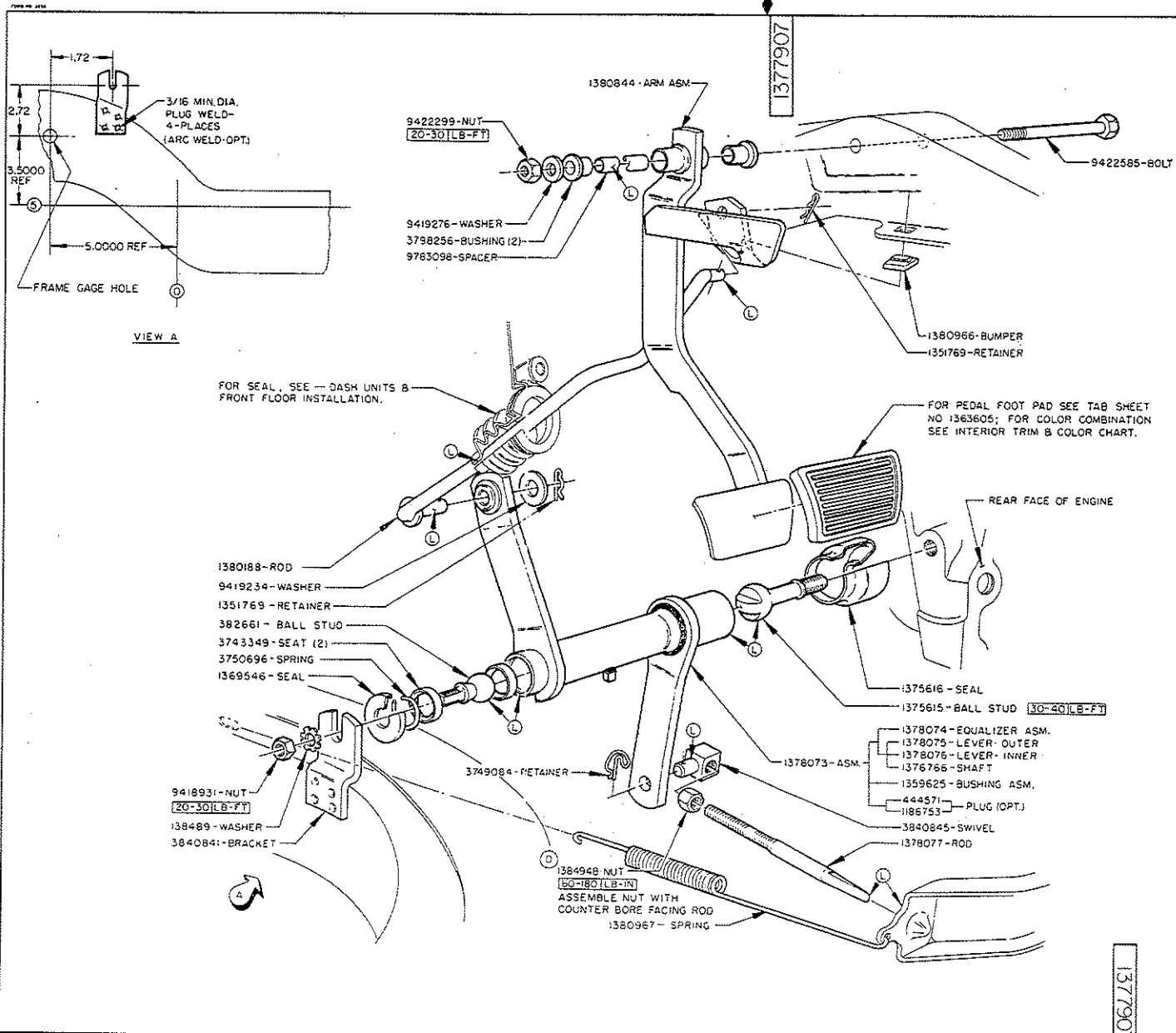
LUBRICATE AREAS INDICATED WITH 9985024.

DO NOT SCALE REPORT ERRORS TOLERANCES UNLESS OTHERWISE SPECIFIED .02 ALLOWED ON TWO PLACE DECIMALS .010 ALLOWED ON THREE PLACE DECIMALS COMMERCIAL TOLERANCES APPLY TO STANDARD PARTS - ROLLED SECTIONS - SHEET METAL GAGES - DRILLED AND PUNCHED HOLES. BURR ALL DRILLED HOLES. COUNTERSINK ALL TAPPED HOLES .030 X 90°.

DATE	SCALE	DR. H. ANDERSON
1-7-65		DR. H. ANDERSON
FIRST USED 1967		CK. [Signature]
33-34-d3-94		APPR.
REFERENCE		APPR.
BL-15814		APPR.

NAME	INDEX
CLUTCH PEDAL & CONTROL INFORMATION ASSEMBLY	
PART NO. 1380537	INDEX 7-8.1

BUICK MOTOR DIVISION
GENERAL MOTORS CORPORATION
FLINT, MICH., U.S.A.



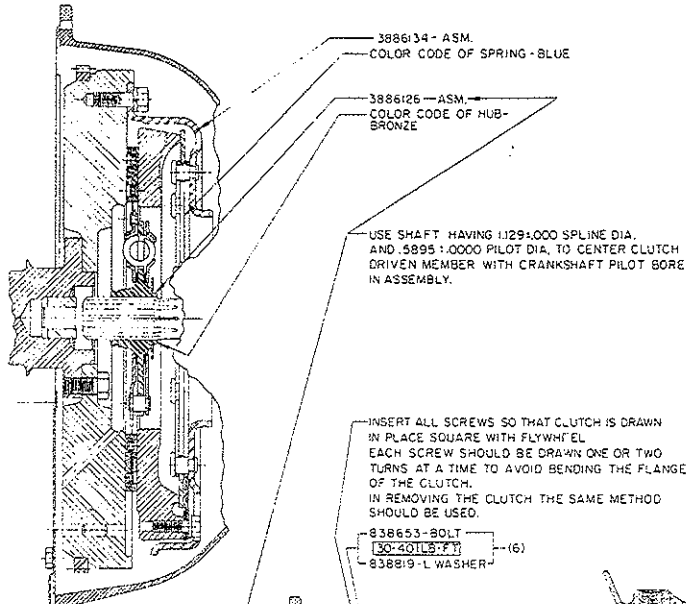
DATE	SYMBOL	REVISION RECORD	AUTH.	DR.	CK.
1-6-66	A	IX REMOVED			
5-24-64	B	DESIGNS REMOVED & 1380844 REVISED TO			
		DETAIL			
11-16-64	C	9-28-7-22 1380000 REF.	JA	PO	
		1380000 REF. REMOVED			
		172 2-32 B SCOOPER			
		1380000 REF. ADDED.	LA	PO	
2-24-67	D	1151947 TO 1384948 Z			
		NOTE ADDED	715745	MS	

CLUTCH LASH ADJUSTMENT ---
WITH CLUTCH PEDAL AT FULL
RELEASE POSITION CONTACTING
RUBBER BUMPER STOP, ADJUST
CLUTCH RELEASE ROD TO GIVE
ZERO LASH AT CLUTCH PEDAL.
BACK OFF CLUTCH RELEASE ROD
APPROX 2 TURNS TO GIVE .62-.76
LASH AT PEDAL PAD. TIGHTEN
LOCKNUT ON CLUTCH RELEASE ROD
TO TORQUE SPECIFIED.

LUBRICATE AREAS INDICATED WITH 9985024.

DO NOT SCALE TOLERANCES UNLESS OTHERWISE SPECIFIED	REPORT ERRORS
± .02 ALLOWED ON TWO PLACE DECIMALS	
± .010 ALLOWED ON THREE PLACE DECIMALS	
COMMERCIAL TOLERANCES APPLY TO STANDARD PARTS - ROLLED SECTIONS - SHEET METAL GAGES - DRILLED AND PUNCHED HOLES.	
BURR ALL DRILLED HOLES - COUNTERSINK ALL TAPPED HOLES .030 X 90°.	
DWG. DATE 8-3-65	SCALE DR. NIEGARTH CK. <i>[Signature]</i>
FIRST USED 1957-46	APPR.
REFERENCE BL-15713	APPR.
NAME CLUTCH PEDAL & CONTROL INFORMATION ASSEMBLY	
PART NO. 1377907	INDEX 7-9.1

BUICK MOTOR DIVISION
WARREN, MICHIGAN, U.S.A.



CLUTCH ASSEMBLY
(V-6)
FOR COMPLETE INFO. SEE (V-8).

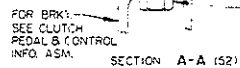
1378623 - ASM.
COLOR CODE OF HUB - YELLOW

WIPE I.D. OF BUSHING WITH GREASE 1364654 APPROX. .04 OUNCE

1378869 - OPT.
USE WITH 9785581 HOUSING ONLY
383732 - OPT.
USE WITH 9774035 HOUSING ONLY

① 9/16-12 BOLT
[R5-20T L5-F-T]
2 - WITH 9785581 HOUSING
4 - WITH 9774035 HOUSING

CLUTCH ASSEMBLY
(V-8)



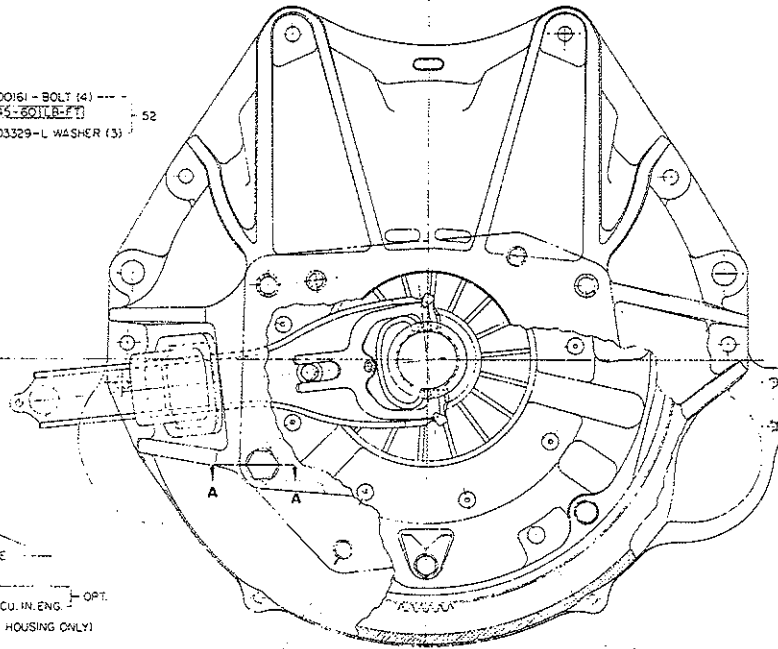
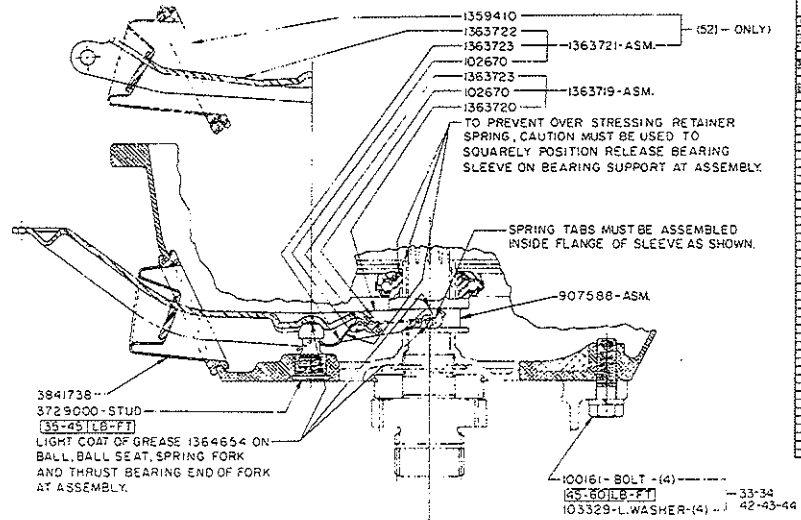
FILL RECESS ON INSIDE OF RELEASE SLEEVE WITH GREASE 1364654 APPROX. .08 OUNCE

3799139 - ASM.
COLOR CODE OF SPRING - ORANGE

9774035 - HOUSING

9785581 - HOUSING - LESS 3.40 CU. IN. ENG. OPT.

9422332 - SCREW (WITH 9785581 HOUSING ONLY)
[R5-20T L5-F-T]



9776400 - PLUG (2)
(USED WITH 9785581 HOUSING ONLY)

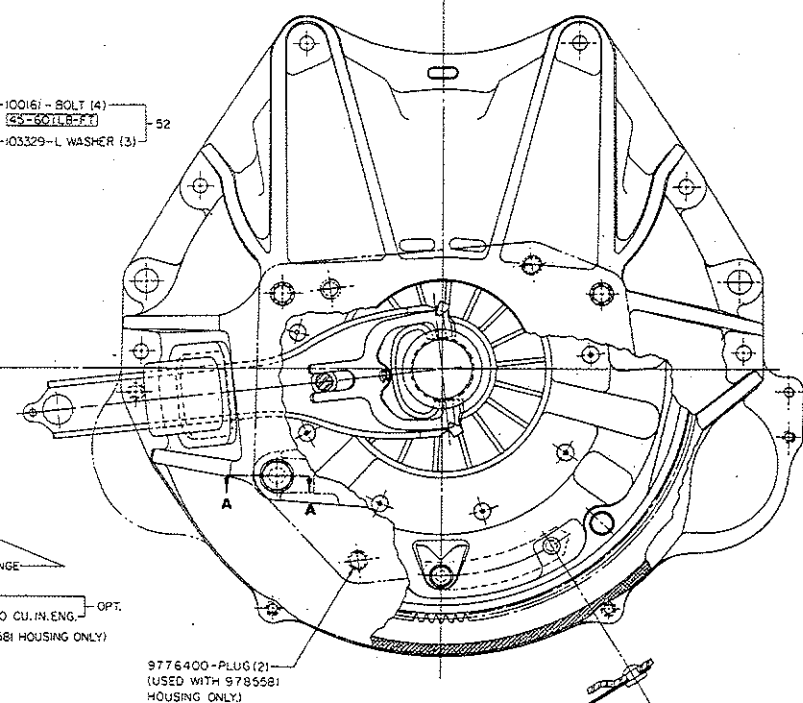
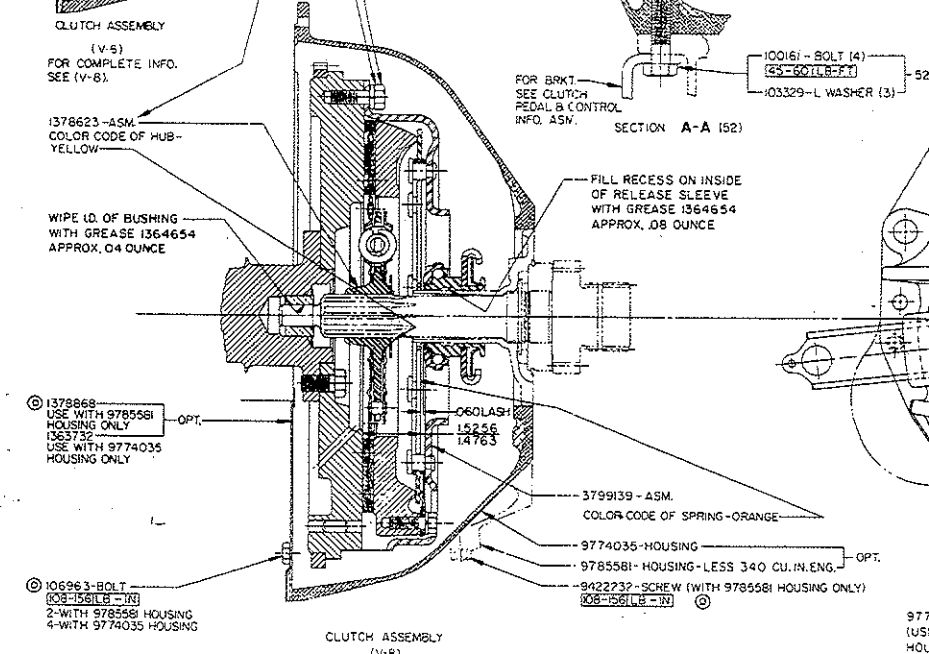
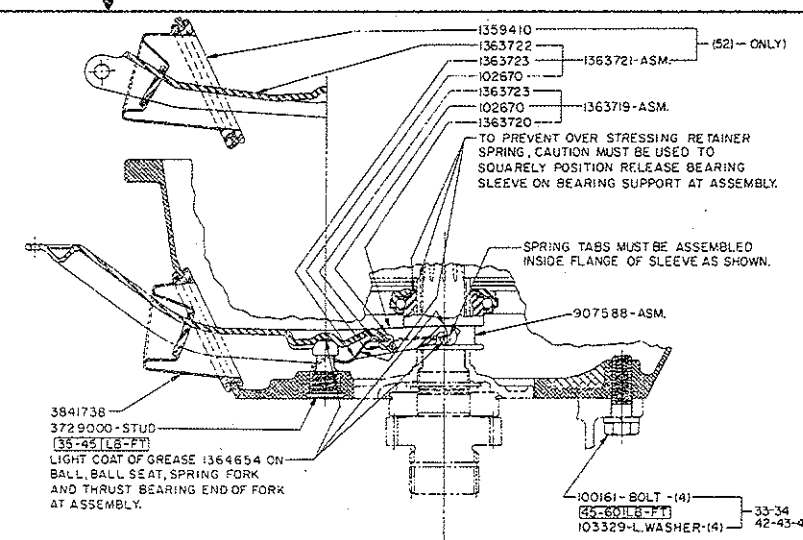
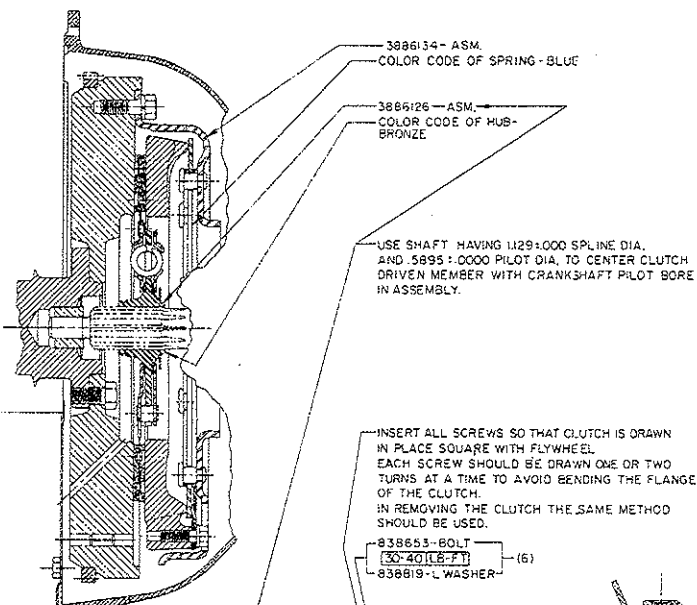
1380366

REV.	DATE	DESCRIPTION	BY	CHKD.
1	12-17-59	ISSUED	JWA	
2	12-17-59	REVISED	JWA	
3	12-17-59	REVISED	JWA	
4	12-17-59	REVISED	JWA	
5	12-17-59	REVISED	JWA	
6	12-17-59	REVISED	JWA	
7	12-17-59	REVISED	JWA	
8	12-17-59	REVISED	JWA	
9	12-17-59	REVISED	JWA	
10	12-17-59	REVISED	JWA	
11	12-17-59	REVISED	JWA	
12	12-17-59	REVISED	JWA	
13	12-17-59	REVISED	JWA	
14	12-17-59	REVISED	JWA	
15	12-17-59	REVISED	JWA	
16	12-17-59	REVISED	JWA	
17	12-17-59	REVISED	JWA	
18	12-17-59	REVISED	JWA	
19	12-17-59	REVISED	JWA	
20	12-17-59	REVISED	JWA	
21	12-17-59	REVISED	JWA	
22	12-17-59	REVISED	JWA	
23	12-17-59	REVISED	JWA	
24	12-17-59	REVISED	JWA	
25	12-17-59	REVISED	JWA	
26	12-17-59	REVISED	JWA	
27	12-17-59	REVISED	JWA	
28	12-17-59	REVISED	JWA	
29	12-17-59	REVISED	JWA	
30	12-17-59	REVISED	JWA	
31	12-17-59	REVISED	JWA	
32	12-17-59	REVISED	JWA	
33	12-17-59	REVISED	JWA	
34	12-17-59	REVISED	JWA	
35	12-17-59	REVISED	JWA	
36	12-17-59	REVISED	JWA	
37	12-17-59	REVISED	JWA	
38	12-17-59	REVISED	JWA	
39	12-17-59	REVISED	JWA	
40	12-17-59	REVISED	JWA	
41	12-17-59	REVISED	JWA	
42	12-17-59	REVISED	JWA	
43	12-17-59	REVISED	JWA	
44	12-17-59	REVISED	JWA	
45	12-17-59	REVISED	JWA	
46	12-17-59	REVISED	JWA	
47	12-17-59	REVISED	JWA	
48	12-17-59	REVISED	JWA	
49	12-17-59	REVISED	JWA	
50	12-17-59	REVISED	JWA	

1380366

CLUTCH INFORMATION ASSEMBLY

PART NO. 1380366



1380366

REV.	DESCRIPTION	DATE
1	ISSUED	12-17-55
2	REVISED	1-11-56
3	REVISED	2-16-56
4	REVISED	3-15-56
5	REVISED	4-19-56
6	REVISED	5-15-56
7	REVISED	6-15-56
8	REVISED	7-15-56
9	REVISED	8-15-56
10	REVISED	9-15-56
11	REVISED	10-15-56
12	REVISED	11-15-56
13	REVISED	12-15-56
14	REVISED	1-15-57
15	REVISED	2-15-57
16	REVISED	3-15-57
17	REVISED	4-15-57
18	REVISED	5-15-57
19	REVISED	6-15-57
20	REVISED	7-15-57
21	REVISED	8-15-57
22	REVISED	9-15-57
23	REVISED	10-15-57
24	REVISED	11-15-57
25	REVISED	12-15-57
26	REVISED	1-15-58
27	REVISED	2-15-58
28	REVISED	3-15-58
29	REVISED	4-15-58
30	REVISED	5-15-58
31	REVISED	6-15-58
32	REVISED	7-15-58
33	REVISED	8-15-58
34	REVISED	9-15-58
35	REVISED	10-15-58
36	REVISED	11-15-58
37	REVISED	12-15-58
38	REVISED	1-15-59
39	REVISED	2-15-59
40	REVISED	3-15-59
41	REVISED	4-15-59
42	REVISED	5-15-59
43	REVISED	6-15-59
44	REVISED	7-15-59
45	REVISED	8-15-59
46	REVISED	9-15-59
47	REVISED	10-15-59
48	REVISED	11-15-59
49	REVISED	12-15-59
50	REVISED	1-15-60
51	REVISED	2-15-60
52	REVISED	3-15-60
53	REVISED	4-15-60
54	REVISED	5-15-60
55	REVISED	6-15-60
56	REVISED	7-15-60
57	REVISED	8-15-60
58	REVISED	9-15-60
59	REVISED	10-15-60
60	REVISED	11-15-60
61	REVISED	12-15-60
62	REVISED	1-15-61
63	REVISED	2-15-61
64	REVISED	3-15-61
65	REVISED	4-15-61
66	REVISED	5-15-61
67	REVISED	6-15-61
68	REVISED	7-15-61
69	REVISED	8-15-61
70	REVISED	9-15-61
71	REVISED	10-15-61
72	REVISED	11-15-61
73	REVISED	12-15-61
74	REVISED	1-15-62
75	REVISED	2-15-62
76	REVISED	3-15-62
77	REVISED	4-15-62
78	REVISED	5-15-62
79	REVISED	6-15-62
80	REVISED	7-15-62
81	REVISED	8-15-62
82	REVISED	9-15-62
83	REVISED	10-15-62
84	REVISED	11-15-62
85	REVISED	12-15-62
86	REVISED	1-15-63
87	REVISED	2-15-63
88	REVISED	3-15-63
89	REVISED	4-15-63
90	REVISED	5-15-63
91	REVISED	6-15-63
92	REVISED	7-15-63
93	REVISED	8-15-63
94	REVISED	9-15-63
95	REVISED	10-15-63
96	REVISED	11-15-63
97	REVISED	12-15-63
98	REVISED	1-15-64
99	REVISED	2-15-64
100	REVISED	3-15-64

1380366

DO NOT SCALE

TOLERANCES UNLESS OTHERWISE SPECIFIED

FRACTIONS ARE TO BE PLACED ORIGINAL

COMMERCIAL TOLERANCES APPLY TO STANDARD

FINISHES UNLESS OTHERWISE SPECIFIED

ALL DIMENSIONS ARE IN INCHES UNLESS OTHERWISE SPECIFIED

DATE: 12-17-55

DRAWN BY: [signature]

CHECKED BY: [signature]

APPROVED BY: [signature]

MANUAL TRANS.

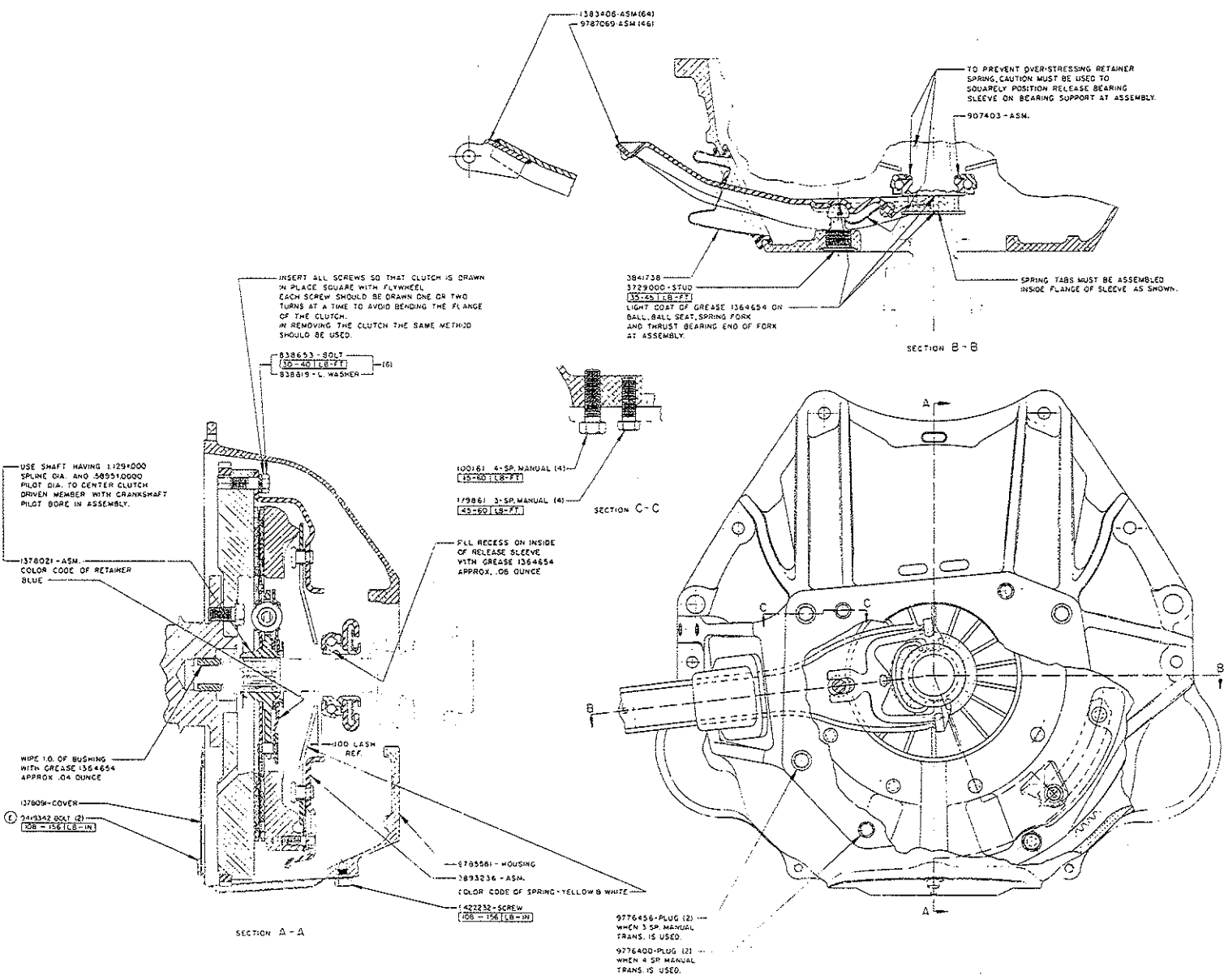
CLUTCH INFORMATION ASSEMBLY

1380366 7-10-1

1380647

DATE	ISSUE	BY	CHKD
1967-06-04	1	J. VIRSKUS	
1967-06-04	2	J. VIRSKUS	
1967-06-04	3	J. VIRSKUS	
1967-06-04	4	J. VIRSKUS	
1967-06-04	5	J. VIRSKUS	
1967-06-04	6	J. VIRSKUS	
1967-06-04	7	J. VIRSKUS	
1967-06-04	8	J. VIRSKUS	
1967-06-04	9	J. VIRSKUS	
1967-06-04	10	J. VIRSKUS	
1967-06-04	11	J. VIRSKUS	
1967-06-04	12	J. VIRSKUS	
1967-06-04	13	J. VIRSKUS	
1967-06-04	14	J. VIRSKUS	
1967-06-04	15	J. VIRSKUS	
1967-06-04	16	J. VIRSKUS	
1967-06-04	17	J. VIRSKUS	
1967-06-04	18	J. VIRSKUS	
1967-06-04	19	J. VIRSKUS	
1967-06-04	20	J. VIRSKUS	

BUICK MOTOR DIVISION
WARREN, MICH.
GM 1380647



1380647

CLUTCH DRIVEN MEMBER ASSEMBLY IS PRECISION STRAIGHTENED AND BALANCED HANDLE WITH CARE TO PREVENT DAMAGE AND THE FACING BEING CONTAMINATED WITH OIL.

DO NOT SCALE

TOLERANCES UNLESS OTHERWISE SPECIFIED:
 1 - ALLOWED ON THREE PLACE DECIMALS
 COMMERCIAL TOLERANCES APPLY TO STANDARD PARTS. HOLLOW SECTIONS - SHEET METAL GAUGES, HOLES AND FINISHED HOLES.
 HUMAN ALL DRILLED HOLES - COUNTERSINK ALL TAPPED HOLES 50% TYP.

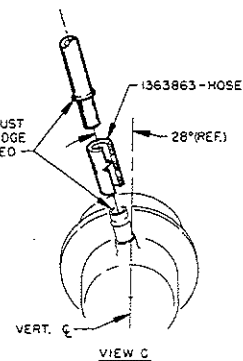
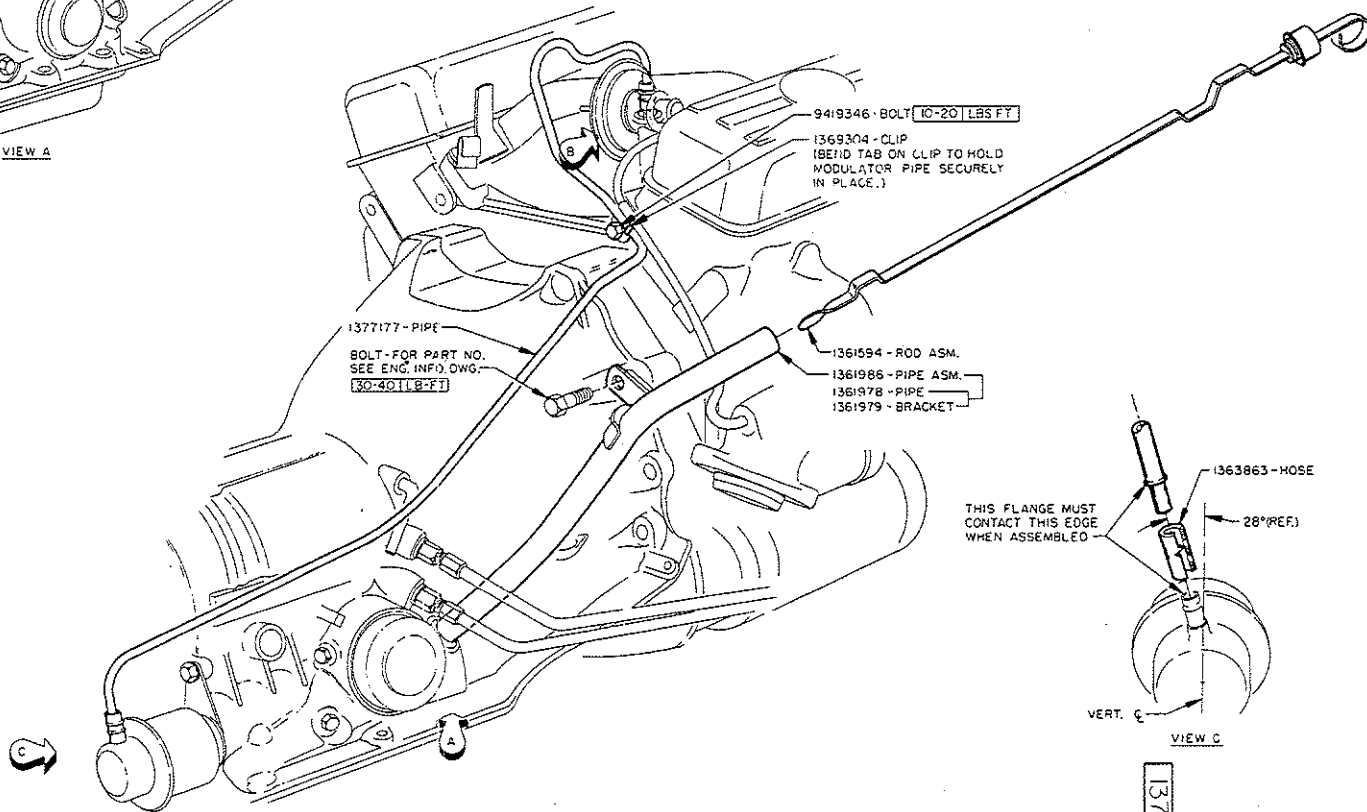
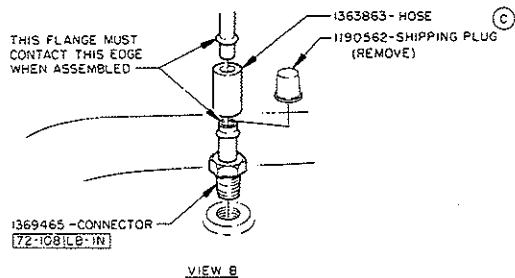
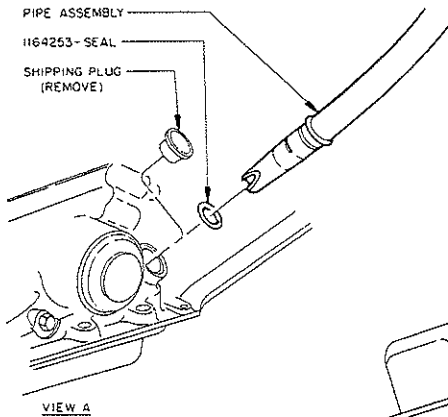
REV.	DATE	SCALE	BY	J. VIRSKUS
1	1-77-06	FULL	BY	
2	1967-06-04	TYP	BY	
3	1967-06-04	TYP	BY	
4	1967-06-04	TYP	BY	
5	1967-06-04	TYP	BY	
6	1967-06-04	TYP	BY	
7	1967-06-04	TYP	BY	
8	1967-06-04	TYP	BY	
9	1967-06-04	TYP	BY	
10	1967-06-04	TYP	BY	
11	1967-06-04	TYP	BY	
12	1967-06-04	TYP	BY	
13	1967-06-04	TYP	BY	
14	1967-06-04	TYP	BY	
15	1967-06-04	TYP	BY	
16	1967-06-04	TYP	BY	
17	1967-06-04	TYP	BY	
18	1967-06-04	TYP	BY	
19	1967-06-04	TYP	BY	
20	1967-06-04	TYP	BY	

MANUAL TRANS.

CLUTCH INFORMATION ASSEMBLY

1380647 INDEX 7-111

1379217



1379217

DATE	SYMBOL	REVISION RECORD	AUTH.	DR.	CHK.
10-18-55	A	REMOVED		BL	DR
12-28-58	B	43-44 SERVO REMOVED		DR	DR
1-5-61	C	HYDRAZINE ADDED		DR	DR

ALL LINES & CONNECTIONS MUST BE FREE OF LEAKS UNDER OPERATING CONDITIONS.

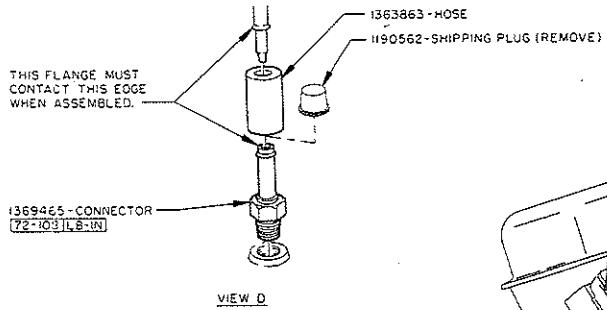
DO NOT SCALE		REPORT ERRORS	
TOLERANCES UNLESS OTHERWISE SPECIFIED			
± .010 ALLOWED ON THREE PLACE DECIMALS			
COMMERCIAL TOLERANCES APPLY TO STANDARD PARTS - ROLLED SECTIONS - SHEET METAL GAGES - DRILLED AND PUNCHED HOLES			
BURR ALL DRILLED HOLES, COUNTERSINK ALL TAPPED HOLES .000 X 90°			
DWG. DATE	SCALE	DR.	NIERGARTH
10-18-55		CHK.	
FIRST USED	1967-33-34	APPR.	
	43-44-52	APPR.	
REFERENCE		APPR.	
	BL-15790	APPR.	
ST-300			
NAME TRANSMISSION OIL FILLER & VACUUM MODULATOR PIPES INFO ASM.			
PART NO.	INDEX		
1379217	7-121		

BUICK MOTOR DIVISION
GENERAL MOTORS CORPORATION
WARREN, MICH. U.S.A.

FIGURE NO. 2333

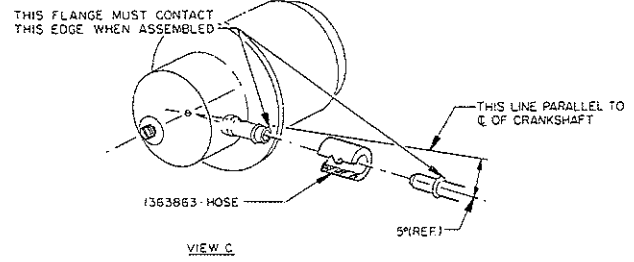
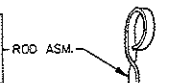
1379168

DATE	SYN.	REVISION RECORD	AUTH.	CHK.
10-12-65	B	REVISED TO DETAIL		
10-12-65	B	42 SERIES ADDED		
10-12-65	C	142 TO 144 ADDED		
10-12-65	D	1570002 TO 1562144		
10-12-65	E	1190562 ADDED		
10-12-65	F	1382144 TO 138220104		
		44-46 GMAD ONLY 8 94		
		ONLY 8 94		

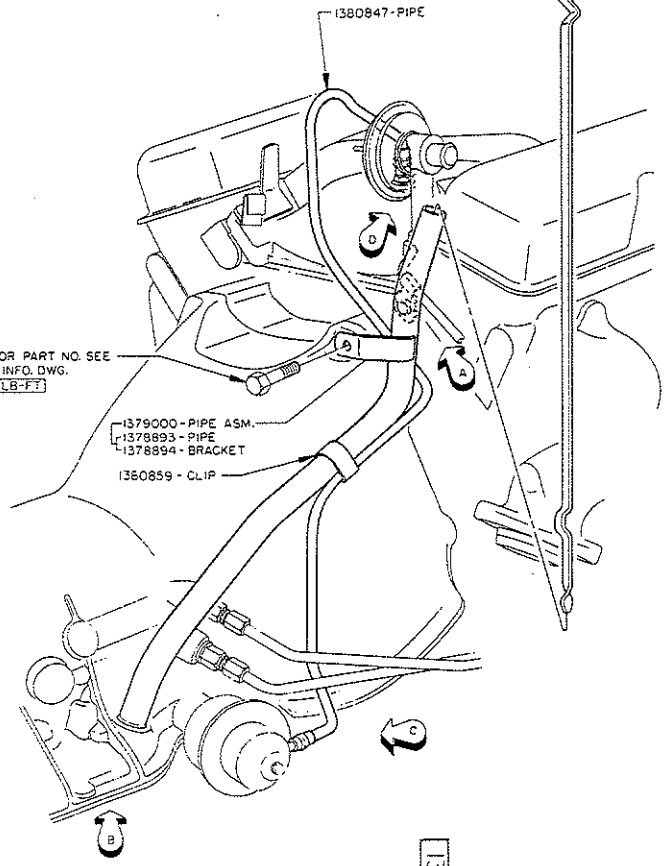
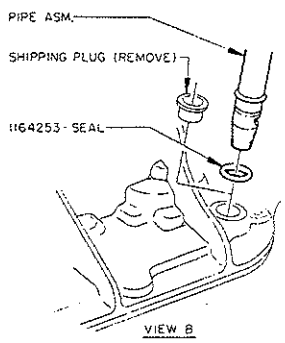
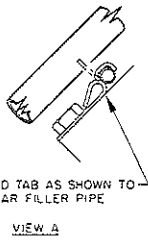


1383668
(44-46 FLINT ONLY
& 52-64-82)

1382144
(44-46 GMAD ONLY
& 94)



ROLY - FOR PART NO. SEE
ENGINE INFO. DWG.
45-601LB-FT



1379168

ALL LINES & CONNECTIONS MUST BE FREE OF LEAKS UNDER OPERATING CONDITIONS.

DO NOT SCALE TOLERANCES UNLESS OTHERWISE SPECIFIED ± ALLOWED ON TWO PLACE DECIMALS ± .010 ALLOWED ON THREE PLACE DECIMALS COMMERCIAL TOLERANCES APPLY TO STANDARD PARTS: ROLLED SECTIONS - SHEET METAL GAGES - DRILLED AND PUNCHED HOLES. BURR ALL DRILLED HOLES. COUNTERSINK ALL TAPPED HOLES .030 X 90°.

DWG. DATE	SCALE	DR.	J. NIERGARTH
10-12-65		CK.	J. L.
FIRST USED	1967	APPR.	
44-5C-144-82-94-46		APPR.	
REFERENCE		APPR.	
BL-16365		APPR.	

ST-400	
NAME	TRANSMISSION OIL FILLER & VACUUM MODULATOR PIPES INFO ASM.
PART NO.	1379168
INDEX	7-131

Insert long sheet 1379925 here.