



1967 BUICK ASSEMBLY INSTRUCTION MANUAL

SPECIAL - SKYLARK 43000 - 44000 SERIES

ELECTRICAL - SPEEDO CABLES & RADIO (SECTION 12)

	PAGES		PAGES
Delcotron Code Identification	12-1.2	Battery Cable Installation & Wiring Information	12-6.6 & 12-6.7
Battery Cable Code Identification	12-1.3	Wiring Information Rear Lamps & Fuel Gage	12-6.8
Instrument Cluster Identification	12-1.4	For Station Wagons See	12-6.9
*Page 12-1.5 cancelled (8-1-66) See 12-4.1		Wiring Information Air Condition	12-7.1
Wire Harness Identification & Usage Chart	12-1.6	Wiring Information For Hydraulic Cruise Control	12-8.1
Lamp & Fuse Chart	12-2.1	Wiring Information (Power Top)	12-9.1
Head Lamp Aim - Chart	12-3.1	Wiring Information Power Tail Gate	12-9.2
*Speedometer Cable Routing & Installation & Identification Code	12-4.1 thru 12-4.3	Antenna Installation	12-10.1
*Page 12-5.1 cancelled (8-1-66) See 12-4.2 & 12-4.3		Radio Receiver Installation & Antenna Trim Adjustment	12-11.1
Wire Harness - Instrument Panel Wiring	12-6.1 thru 12-6.3	Radio Rear Speaker Installation	12-12.1
Forward Lamp Wiring	12-6.4	*Wiring Diagrams	12-14.2 thru 12-16.1
Engine Wire Harness Wiring	12-6.5		*8-2-66

PART NUMBER-1379480
PAGE NUMBER- 12-1.0



1967 BUICK ASSEMBLY INSTRUCTION MANUAL

SPECIAL - SKYLARK 43000 - 44000 SERIES

ELECTRICAL - SPEEDO CABLES & RADIO (SECTION 12)

DELCO TRON CODE IDENTIFICATION

The code is stamped on top of drive end frame as installed on engine.

PART NO.	CODE	OUTPUT (AMP.)	END FRAME POSITION	PULLEYS		USAGE
				DIA.	GROOVES	
1100761	VA	37	Upright	2.50	1	Non A/C with V6 Engine
*1100691	BA	*42	Upright	2.50	1	Non A/C with V8 Engine
1100774	BD	55	Upright	2.50	2	All Air Cond. Jobs

*11-28-66

PART NUMBER-1379480

PAGE NUMBER- 12-1.2



1967 BUICK ASSEMBLY INSTRUCTION MANUAL
SPECIAL - SKYLARK 43000 - 44000 SERIES

ELECTRICAL (SECTION 12)

BATTERY CABLE CODE IDENTIFICATION

PART NO.	CODE	CABLE USAGE	MODEL
*6289159	RT	Cable Asm - Bat. Pos.	433-34-35-36-42-43-44 (V6 & V8)
6290277	RU	Cable Asm - Bat. Pos.	466 (Gran Sport)
2983780	JE	Cable Asm - Bat. Neg.	434-36-42-44 (V8)
6286159	RP	Cable Asm - Bat. Neg.	433-35-43 (V6) - T60
6289127	JB	Cable Asm - Bat. Neg.	446 (Gran Sport)

*10-31-66

PART NUMBER-1379480

PAGE NUMBER- 12-1.3



1967 BUICK ASSEMBLY INSTRUCTION MANUAL
SPECIAL - SKYLARK 43000 - 44000 SERIES

ELECTRICAL & INSTRUMENTS (SECTION 12)

INSTRUMENT CLUSTER IDENTIFICATION

PART NO.	MODEL	CODE	KILOS	BUZZER	SHIFT IND.	REMARKS
6458778	A	AA	-	-	2 Sp.	<u>Hydraulic Cruise Control not in Cluster</u>
6458709	A	AD	-	*	2 Spd.	
6459069	A	AC	-	-	-	Manual Trans.
6458710	A	AE	*	*	2 Sp.	
6458780	A	AF	-	N.A.	2 Sp.	Police
6459563	A	AG	-	*	3 Sp.	Sportwagon 400
6459564	A	AH	-	-	3 Sp.	Sportwagon 400

*Indicates Option

Note: Electro Cruise Control is not available in these series.

3-29-66

PART NUMBER-1379480

PAGE NUMBER- 12-1.4

08724



1967 BUICK ASSEMBLY INSTRUCTION MANUAL
SPECIAL - SKYLARK 43000 - 44000 SERIES

ELECTRICAL (GROUP 12)

SPEEDOMETER CABLE CODE IDENTIFICATION

PART NO.	CODE	SERIES USAGE	LENGTH
6454600	*BB	- 3 Speed Manual - 2 Speed Automatic - 3 Speed Automatic	57.00"
6454656	*BA	G. S. - 3 Speed Manual - 4 Speed Manual	70.00"

*4-7-66

PART NUMBER-1379480

PAGE NUMBER- 12-1.5

02M



1967 BUICK ASSEMBLY INSTRUCTION MANUAL

SPECIAL - SKYLARK 43000 - 44000 SERIES

WIRE HARNESS CODE IDENTIFICATION

All wire harnesses are identified by code tape bearing letters and the last four digits of the part number.

PART NAME	CODE	PART NAME	SERIES	USAGE
6290575	SF	Engine Wiring	A Jobs	V-6 Engine
6290576	SG	Engine Wiring	A Jobs	V-8 Engine
*6292004	SH	Engine Wiring	G.S. Jobs	400 Cu. In. Engine
*6291869	SL	Forward Lamp	A Jobs	All
6291793	SA	Inst. Panel	A Jobs	Standard
6291794	SB	Inst. Panel	A Jobs	Composite
6291795	SD	Inst. Panel	G.S. Jobs	Long Console D55
6291796	SC	Inst. Panel	G.S. Jobs	Short Console D57 & V16
2989489	SU	Ccnsole	All	With D55 & M33

*9-7-66

PART NUMBER-1379480

PAGE NUMBER 12-1.6

LAMPS

PART NUMBER	WHERE USED	LAMP NO.	NO. USED	CANDLE POWER	MODEL
FRONT					
5956001	HEADLAMP - 5-3/4 DIA. TYPE - 1	4003	2	37.5 W	ALL
5956002	HEADLAMP - 5-3/4 DIA. TYPE - 2	4002-L	2	37.5 - 55 W	ALL
5948928	HEADLAMP - 5-3/4 DIA. TYPE - 2 (EXPORT)	4003	2	37.5 - 55 W	ALL
9423295	PARK & DIR. SIGNAL LAMP	1157 NA	2	34/4	ALL
274931	SPOT LAMP	4604	1	30 W	ALL
REAR					
9417867	TAIL STOP & DIR. SIGNAL LAMP	1157	2	32/4	ALL
9417866	BACK UP LAMP	1156	2	32	ALL
9421777	LICENSE LAMP	97	1	4	ALL
142452	LUGGAGE COMPARTMENT	89	1	6	ALL
344136	TROUBLE LAMP	1004	1	15	ALL
INSTRUMENT PANEL					
9421330	INDIRECT LAMP	194	3	2	ALL
INDICATORS					
9417561	HEADLAMP HI BEAM	161	1	1	ALL
9417561	DIR. SIGNAL	161	2	1	ALL
9421330	OIL PRESSURE	194	1	2	ALL
9421331	WATER TEMP.	194	1	2	ALL
9421330	GEN. CHARGE	194	1	2	ALL
131282	CRUISE CONTROL	53	1	1	ALL
SERVICE ILLUMINATION					
9416927	AUTO. TRANSMISSION DIAL	1893	1	2	ALL
9416224	RADIO DIAL	1891	1	2	ALL
9416927	HEATER - DEFROSTER CONTROL DIAL	1893	2	2	ALL
274934	ASH RECEIVER	2445	1	5	ALL
9421230	BRAKE WARNING	194	1	7	ALL
131282	TACHOMETER	53	1	1	ALL
9416927	GLOVE COMPARTMENT LAMP	1893	1	2	ALL
131282	AUTO TRANSMISSION DIAL CONSOLE	53	2	1	ALL
INTERIOR ILLUMINATION					
9414045	DOME - ROOF CENTER	211	1	15	ALL
383638	FLASHER DIR. SIGNAL (OPT. WITH 383639)		1		ALL
383639	FLASHER DIR. SIGNAL (OPT. WITH 383638)		1		ALL
142453	COURTESY - RT. & LT. SAIL PANELS	90	2	6	SKYLARK COUPES ONLY
142452	COURTESY LIGHT INST. PANEL	89	2	6	ALL
142453	COURTESY LIGHT INTERIOR	90	3	6	WAGONS ONLY
142453	COURTESY LIGHT (CONSOLE)	90	1	6	43 - 44 - 46
9883744	FLASHER HAZARD (OPT. WITH 1381307)		1		ALL
1381303	FLASHER HAZARD (OPT. WITH 9883744)		1		ALL

1378596

FUSES

G.M. PART NUMBER	WHERE USED	AMP	TYPE	LENGTH	MODEL
117142	[RADIO - DIR. SIGNAL]	10	AGC	1-1/4	ALL
106653	[STOP LAMPS] & HAZARD FLASHER	20	SFE	1-1/4	ALL
459844	[BLOWER MOTOR (HEATER AND/OR AIR CONDITIONING & COMPRESSOR CLUTCH) POWER WDW RELAY COIL]	25	AGC	1-1/4	ALL
148511	[INSTRUMENT LIGHTS (ILLUMINATION)]	4	AGC	1-1/4	ALL
106653	[WIPERS]-TRANS. SOLENOIDS - BACK UP LIGHTS-INDICATOR LAMPS - BUZZER - CRUISE CONTROL	20	AGC	1-1/4	ALL
106653	[CIGAR LIGHTER - TAIL LIGHTS] - CLOCK - LICENSE, COURTESY, DOME, GLOVE BOX, TRUNK LIGHTS	20	SAE	1-1/4	ALL
126049	REAR WINDOW DEFROSTER BLOWER (INLINE FUSE)	5	AGC	5/8	ALL
FUSIBLE LINK REPAIR PARTS					
G.M. PART NUMBER	WHERE USED	GAGE	COLOR	LENGTH	MODEL
6292178	HEADLIGHT FEED CIRCUIT	16	BLACK	7.0	ALL
6292179	IGNITION & ACCESSORY FEED CIRCUIT	14	BROWN	7.0	ALL

1378596

DATE	REVISION RECORD	AUTH.	CHK.
6/7/66	A X - REMOVED		IM J
6/24/66	B 130037344182003		IM J
	ADDED		IM J
6/24/66	C 1344610 1344610 1344610		IM J
	[BRAKE WARNING]		IM J
	1344610 (DIR. SIG. LT)		IM J
	REMOVED		IM J
6/24/66	D 1344610 1344610 1344610		IM J
6/24/66	E 130037344182003		IM J
	DATA REVISED		IM J
	1344610 ADDED POWER WDW RELAY COIL		IM J
	ADDED TO ASSY # 4		IM J
	CRUISE CONTROL		IM J
	ADDED TO 10 6 6 5 3		IM J
6/24/66	F 1344610 1344610 1344610		IM J
	1344610 DATA ADDED		IM J

WORDS MARKED THUS [] INDICATES ABBREVIATED IDENTIFICATION OF FUSE CAVITY IN FUSE BLOCK.

⊕ OMIT ON CONVERT. & SPECIAL TRIM.

DO NOT SCALE REPORT ERRORS TOLERANCES UNLESS OTHERWISE SPECIFIED
 2 ALLOWED ON TWO PLACE DECIMALS
 3 .010 ALLOWED ON THREE PLACE DECIMALS
 COMMERCIAL TOLERANCES APPLY TO STANDARD PARTS - ROLLED SECTIONS - SHEET METAL GAGES - DRILLED AND PUNCHED HOLES.
 BURR ALL DRILLED HOLES. COUNTERSINK ALL TAPPED HOLES .030 X 90°.

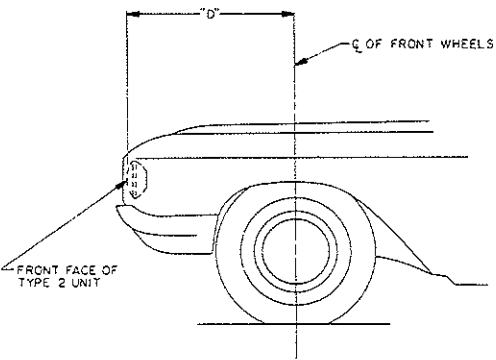
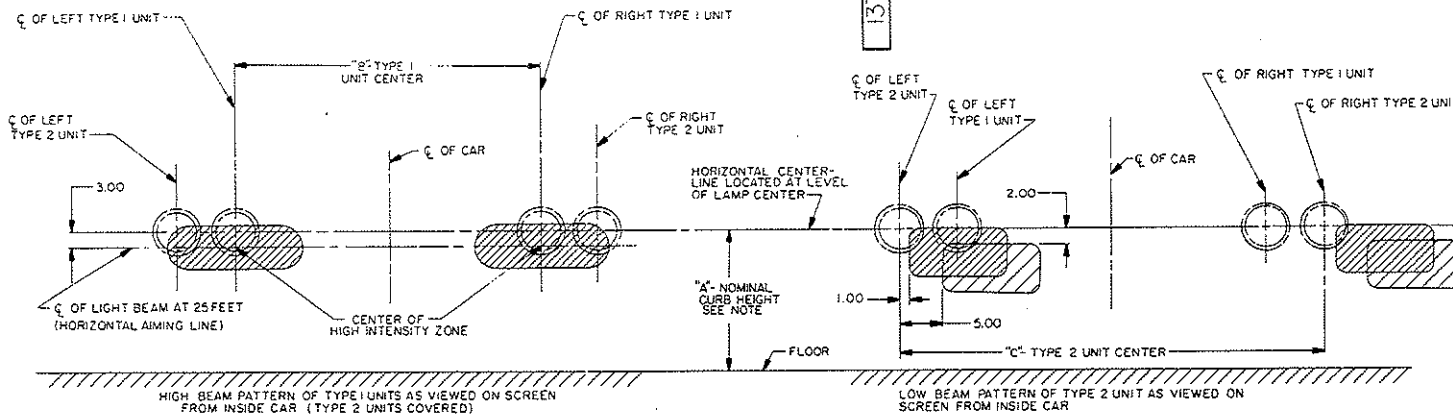
DWG. DATE	SCALE	DR.	IM
7-16-66		CK.	
FIRST USED		APP.	
1/66 - 34-42-43-44-46		APP.	
REFERENCE		APP.	

MATERIAL SPEC.

NAME

CHART - LAMP & FUSE

PART NO. 1378596 INDEX 12-21



1. FLOOR ON WHICH CAR IS TESTED MUST BE PERFECTLY LEVEL, DOORS MUST BE CLOSED & CAR ROCKED SIDEWAYS PRIOR TO AIMING.
 2. MEASURE DIMENSION "A" FOR LAMP AIM RECHECKS ON SCREEN.
 3. ALLOWANCE OF 1.00 OVER THE CAR NOMINAL CURB HEIGHT HAS BEEN MADE FOR EMPTY GAS TANK & SETTLING OF SPRINGS.
 4. UNITS AIMED ELECTRICALLY SHALL BE AIMED WITH 12.8 ± 1.4 VOLTS AT HEADLAMP TERMINALS.
 5. ALL UNITS MUST MEET THE FOLLOWING AIMING TOLERANCES.
- AIM INSPECTION LIMITS**

TYPE 1 UNITS-HIGH BEAM
 VERTICAL AIM - THE CENTER OF THE HIGH INTENSITY ZONE TO BE ±1.00 INCH FROM A LINE 3.00 INCHES BELOW THE HORIZONTAL CENTERLINE OF THE LAMP.
 HORIZONTAL AIM - THE CENTER OF THE HIGH INTENSITY ZONE TO BE ±4.00 INCHES FROM THE VERTICAL CENTERLINE OF THE LAMP.

TYPE 2 UNITS-LOW BEAM
 VERTICAL AIM - THE TOP EDGE OF THE HIGH INTENSITY ZONE TO BE LOCATED AT THE HORIZONTAL CENTERLINE OF THE LAMP TO 2.00 INCHES BELOW THE HORIZONTAL CENTERLINE OF THE LAMP.
 HORIZONTAL AIM - THE LEFT EDGE OF THE HIGH INTENSITY ZONE TO BE LOCATED FROM 1.00 INCH TO 5.00 INCHES TO THE RIGHT OF THE VERTICAL CENTERLINE OF THE LAMP.

CAUTION- DO NOT AIM TYPE 2 UNITS ON THE UPPER BEAM.

SERIES	43-44000	43335 43435-635	44855-65 44455-65	44600	45000	46000	48000	49000
DIM.	"A"	27.29	27.67	27.81	26.54	27.79	27.26	27.44
	"B"	49.40	49.40	49.40	49.40	52.60	52.60	52.60
	"C"	63.20	63.20	63.20	63.20	65.52	65.52	65.52
	"D"	28.04	28.04	28.04	28.04	28.75	28.75	30.75

Ⓢ

Ⓢ

1379601

1379601

DATE	SYM.	REVISION	RECORD	AUTH.	OR.	CHK.
5-11-66	A	X	REMOVED			JDR
4-30-66	B		124-11 TO 24-97(DIM. A)			AMJ
5-4-66	C		124-97 TO 27-28(DIM. A)			JDR
			27-40 TO 27-79(DIM. A)			JDR

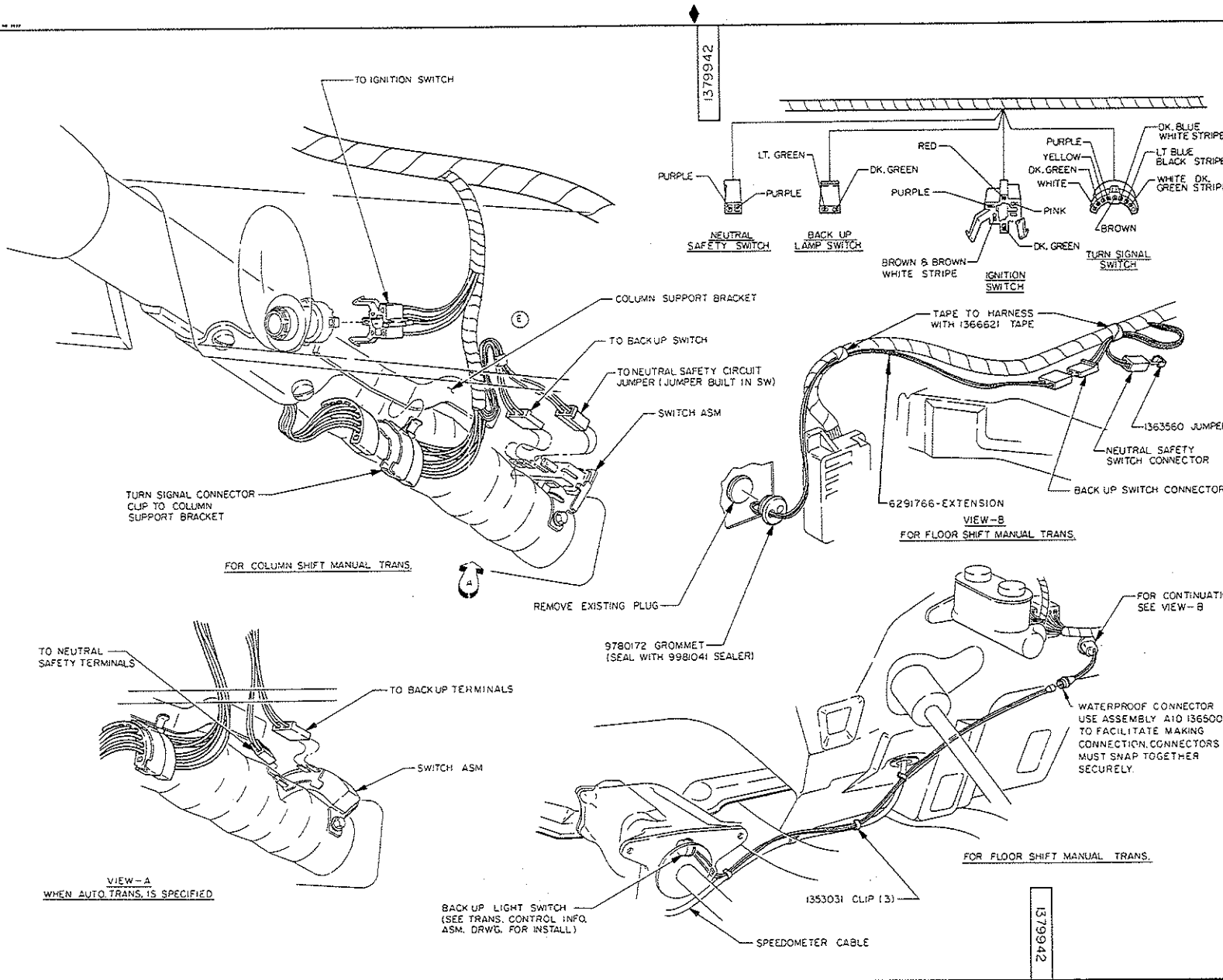
THIS CHART FOR RIGHT HAND RULE OF THE ROAD DRIVING FOR LEFT HAND RULE OF THE ROAD DRIVING THE LOW BEAM PATTERN IS SYMMETRICALLY OPPOSITE FROM THE PATTERN AS SHOWN. THE HIGH BEAM PATTERN REMAINS AS IS.

ALL DIM. ARE DESIGN DIM. AND DO NOT INCLUDE TOLERANCES.

DO NOT SCALE		REPORT ERRORS	
TOLERANCES UNLESS OTHERWISE SPECIFIED			
± ALLOWED ON TWO PLACE DECIMALS		± .010 ALLOWED ON THREE PLACE DECIMALS	
COMMERCIAL TOLERANCES APPLY TO STANDARD PARTS - ROLLED SECTIONS - SHEET METAL GAGES - DRILLED AND PUNCHED HOLES			
BURR ALL DRILLED HOLES. COUNTERSINK ALL TAPPED HOLES .030 X 90°.			
DWG. DATE	SCALE	DR. J. DRISCOLL	
11-8-65		CK. R.P. DRISCOLL	
FIRST USED		APPR.	
1957 A-B-C-B-E		APPR.	
REFERENCE		APPR.	
MATERIAL SPEC.			
NAME			
CHART - HEADLAMP AIMING			
PART NO.		INDEX	
1379601		12-3.1	

BUICK MOTOR DIVISION
GENERAL MOTORS CORPORATION
WARREN, MICH., U.S.A.

DATE	BY	REVISION RECORD	AUTH.	DR.	COL.
8-24-64	A	REVISED			
8-24-64	B	WIRE ROUTING REVISED			
8-24-64	C	WIRE ROUTING & NOTE			
		ADDED			
8-24-64	D	WIRE ROUTING REVISED			
8-24-64	E	TAPPING OF COLUMN WIRE REVISED			



VIEW - A
WHEN AUTO TRANS. IS SPECIFIED

VIEW - B
FOR FLOOR SHIFT MANUAL TRANS.

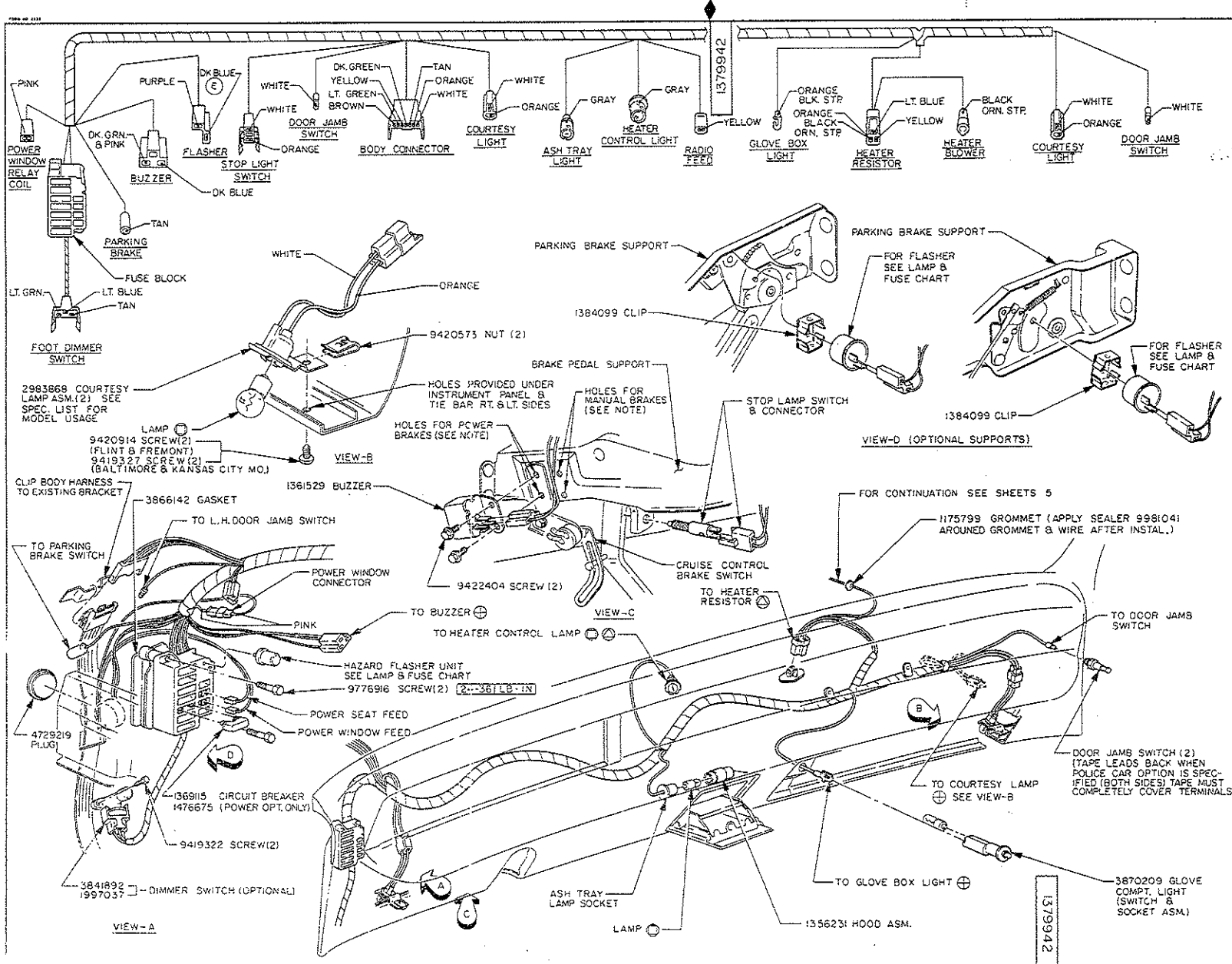
DO NOT SCALE REPORT ERRORS
TOLERANCES UNLESS OTHERWISE SPECIFIED
= ALLOWED ON TWO PLACE DECIMALS
±.010 ALLOWED ON THREE PLACE DECIMALS
COMMERCIAL TOLERANCES APPLY TO STANDARD
PARTS - ROLLED SECTIONS - SHEET METAL GAGES -
DRILLED AND PUNCHED HOLES.
BURR ALL DRILLED HOLES. COUNTERSINK ALL
TAPPED HOLES .030 X 90°

DWG. DATE	SCALE	DR.	BY
3-1-66	NONE	DR. B J CIEN	DR. J. P. ...
FIRST USED	1967-33	APPR.	
REFERENCE	34, 43, 44, 46	APPR.	

NAME	
WIRING INFORMATION ASSEMBLY	
PART NO.	INDEX
1379942	12-6.2
SHEET 2 OF 9 SHEETS	

DATE	BY	REVISION RECORD	AUTH.	DR.	CHK.
10-24-66	A. V. DEAN	REVISED			
11-22-66	B. INOTE	REVISED			
12-22-66	C. POWER WINDOW RELAY WIRING				
1-15-67	D. REVISED				
2-14-67	D. 137175 TO 138409 (2 PLACES)				
10-27-67	E. BROWN TO DK BLUE				

BUICK MOTOR DIVISION
 GENERAL MOTORS CORPORATION
 WARREN, MICH., U. S. A.



⊕ TAPE LEAD BACK TO HARNESS WHEN OPTION IS NOT SPECIFIED WITH 1366621 TAPE.

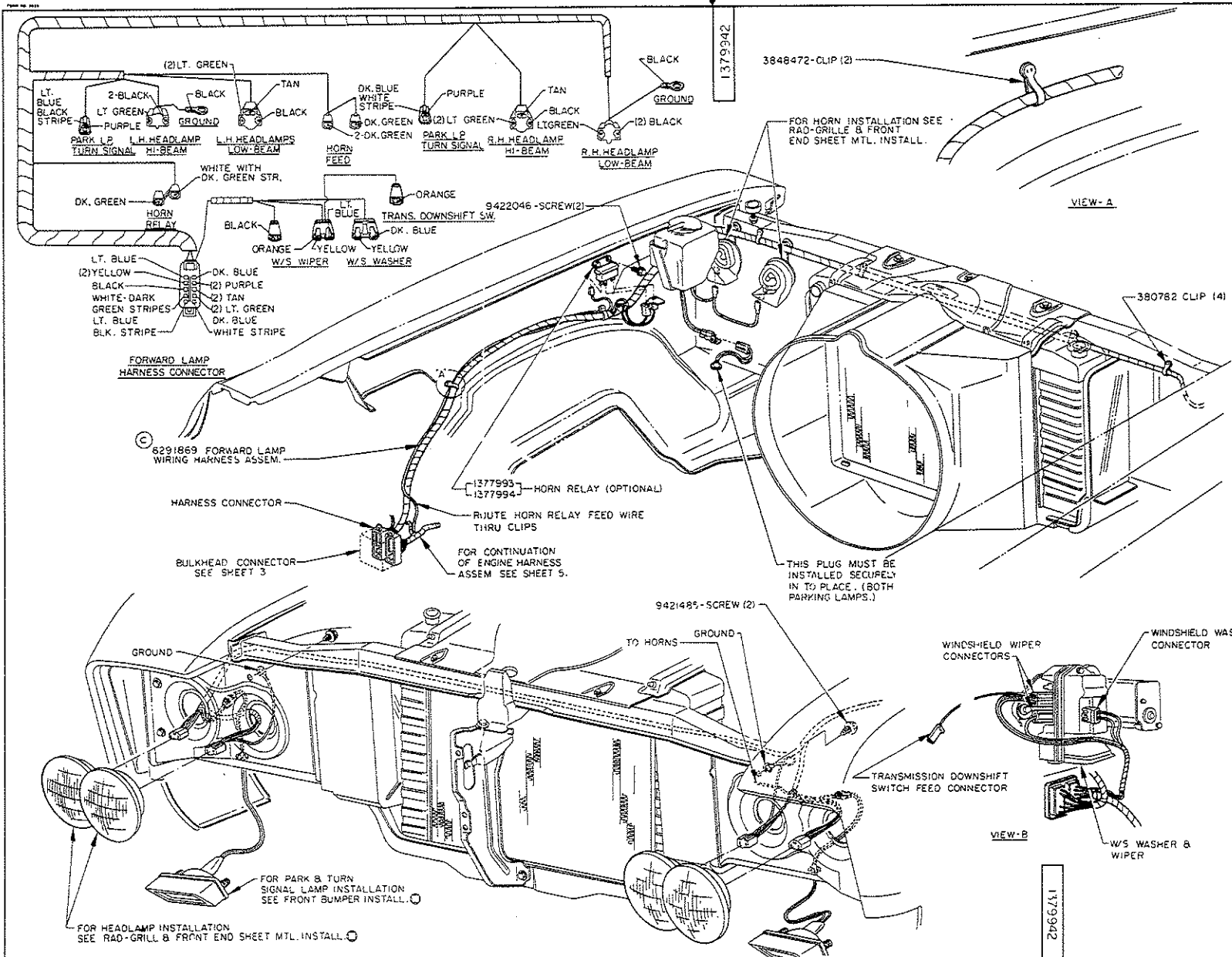
⊕ TEAR FREE FROM TAPE INTO POSITION SHOWN WHEN OPTION IS SPECIFIED

⊕ FOR BULB SIZE INFORMATION SEE LAMP & FUSE CHART.

WHEN CRUISE CONTROL BRAKE SWITCH IS SPECIFIED ALONG WITH BUZZER, INSTALL SWITCH SCREWS INTO HOLES INDICATED. WHEN BUZZER ALONE IS SPECIFIED USE HOLES MARKED POWER BRAKES.

DO NOT SCALE	REPORT ERRORS
TOLERANCES UNLESS OTHERWISE SPECIFIED	= ALLOWED ON TWO PLACE DECIMALS
X .010 ALLOWED ON THREE PLACE DECIMALS	COMMERCIAL TOLERANCES APPLY TO STANDARD PARTS - ROLLED SECTIONS - SHEET METAL GAUGES - DRILLED AND PUNCHED HOLES.
BURR ALL DRILLED HOLES. COUNTERSINK ALL TAPPED HOLES .030 X 90°.	
DWG. DATE 2-22-66	SCALE NONE
FIRST USED 1967-33	DR. S. J. CIEN
REFERENCE 34, 43, 44, 46	CHK. J. B. HARRIS
	APPR. _____
	APPR. _____

INSTRUMENT PANEL WIRING	
NAME _____	
WIRING INFORMATION ASSEMBLY	
PART NO. 1379942	INDEX
SHEET 3 OF 9 SHEETS	12-63



DATE	SYMBOL	REVISION RECORD	AUTH.	DR.	CHK.
12-26-66	A	V. BENTON		SOLO	
1-14-67	B	9422046 TO 6422048		MMK	
1-14-67	C	6291869 TO 6291869		MMK	

○ FOR BULB SIZES SEE LAMP AND FUSE CHART.

DO NOT SCALE REPORT ERRORS
TOLERANCES UNLESS OTHERWISE SPECIFIED
± ALLOWED ON TWO PLACE DECIMALS
± .010 ALLOWED ON THREE PLACE DECIMALS
COMMERCIAL TOLERANCES APPLY TO STANDARD PARTS - ROLLED SECTIONS - SHEET METAL GAGES - DRILLED AND PUNCHED HOLES.
BURN ALL DRILLED HOLES. COUNTERSINK ALL TAPPED HOLES .030 X 90°.

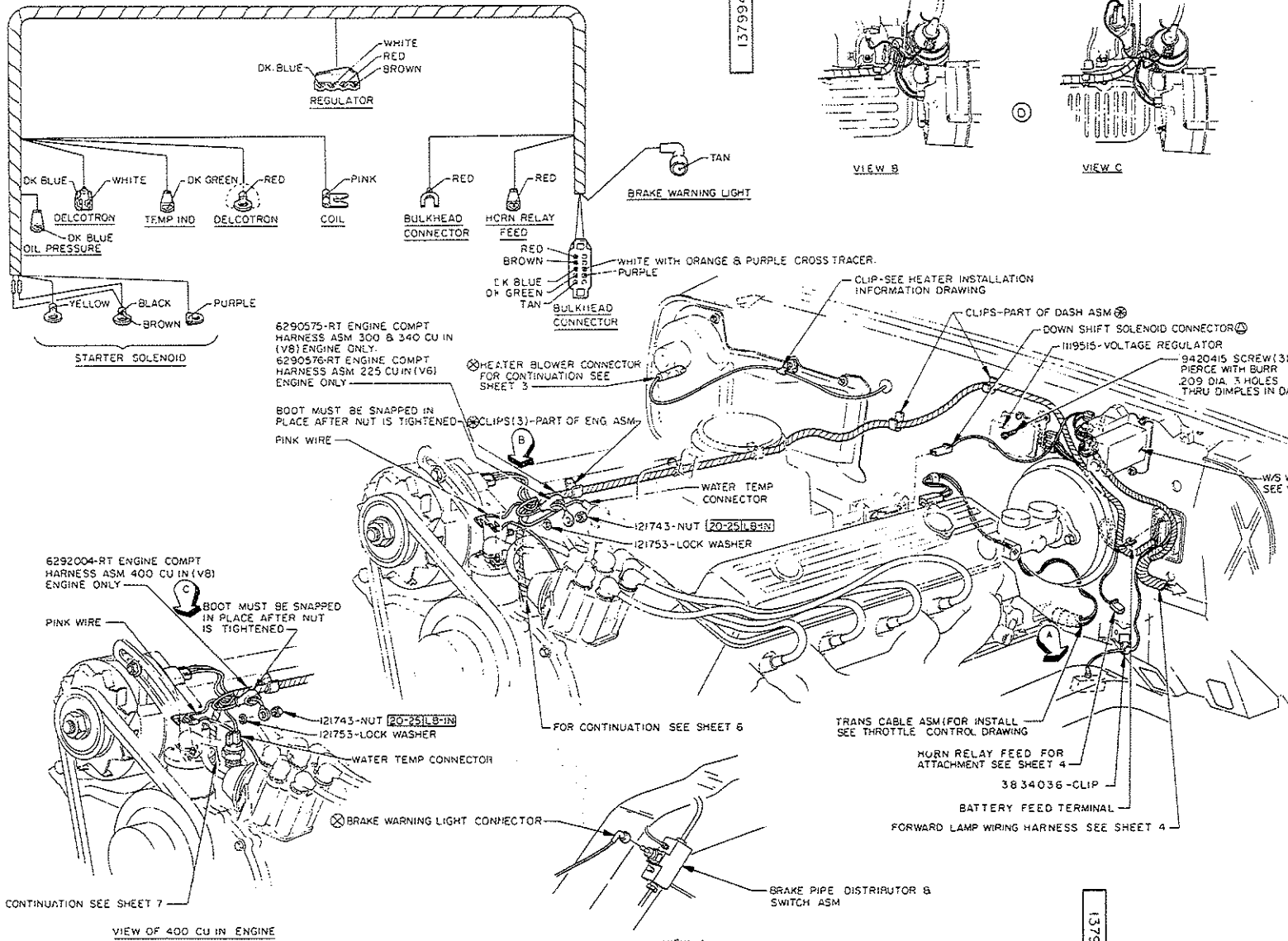
DWG. DATE	SCALE	DR. R. CHALUPIAK
3-4-66		CK. [Signature]
FIRST USED	1967 33-34	APPR.
REFERENCE	43-44-46	APPR.

FORWARD LAMP WIRING HARNESS

NAME	WIRING INFORMATION ASSEMBLY
PART NO.	1379942
SHEET 4 OF 9 SHEETS	INDEX 12-64

BUICK MOTOR DIVISION
GENERAL MOTORS CORPORATION
WARREN, MICH. U.S.A.

Form 48 (Rev. 1-65)



DATE	SYM.	REVISION RECORD	AUTH.	CHK.
12-9-65	A	REVISED	DR. JOHNSON	
1-18-66	B	REVISED		
2-11-66	C	REVISED		
3-15-66	D	REVISED		
4-19-66	E	REVISED		
5-23-66	F	REVISED		
6-27-66	G	REVISED		
7-31-66	H	REVISED		
8-31-66	I	REVISED		
9-30-66	J	REVISED		
10-31-66	K	REVISED		
11-30-66	L	REVISED		
12-31-66	M	REVISED		
1-31-67	N	REVISED		
2-28-67	O	REVISED		
3-29-67	P	REVISED		
4-27-67	Q	REVISED		
5-25-67	R	REVISED		
6-23-67	S	REVISED		
7-21-67	T	REVISED		
8-19-67	U	REVISED		
9-17-67	V	REVISED		
10-15-67	W	REVISED		
11-13-67	X	REVISED		
12-11-67	Y	REVISED		
1-9-68	Z	REVISED		

DO NOT SCALE	REPORT ERRORS
TOLERANCES UNLESS OTHERWISE SPECIFIED	1 ALLOWED ON TWO PLACE DECIMALS
7 .010 ALLOWED ON THREE PLACE DECIMALS	COMMERCIAL TOLERANCES APPLY TO STANDARD PARTS-ROLLED SECTIONS-SHEET METAL GAGES-DRILLED AND PUNCHED HOLES.
BURR ALL DRILLED HOLES. COUNTERSINK ALL TAPPED HOLES .030 X 90°.	
DWG. DATE 12-9-65	SCALE
FIRST USED 1967-33,34,43,44,46	DR. JOHNSON
	CHK. J. P. O.
	APPR.
	APPR.
	APPR.
ENGINE WIRING HARNESS	
NAME	
WIRING INFO ASSEMBLY	
PART NO. 1379942	IND. #
CHEE 1 5 OF 9 SHEETS	12-6.5

1379942

11/15/15

