

LOS VAQUEROS RESERVOIR JOINT POWERS AUTHORITY

LOS VAQUEROS RESERVOIR EXPANSION PROJECT



PROJECT OBJECTIVES

- Develop water supplies for environmental water management
- Increase municipal and industrial water supply reliability
- Improve the quality of water deliveries

PURPOSE

WATER FOR WETLANDS



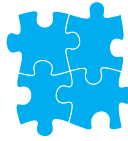
Reliable water supply for South of Delta wildlife refuges

WATER FOR COMMUNITIES



Reliable water supply for 11 million Californians

REGIONAL INTEGRATION



High potential for regional water system integration

WATER QUALITY



Protection of delivered water quality

RECREATION



Recreation facility enhancement

JPA MEMBERS

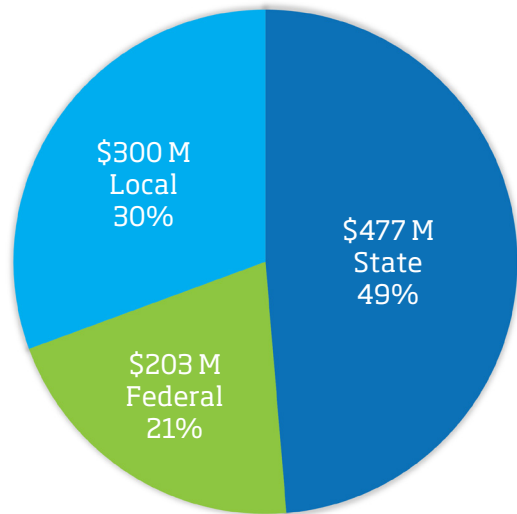
These agencies are members of the Los Vaqueros Reservoir Joint Powers Authority and seek to diversify their water supply portfolios against drought, emergencies, climate change and regulatory challenges.

- Los Vaqueros Reservoir
- 1 Alameda County Water District
- 2 Contra Costa Water District
 - City of Brentwood
- 3 East Bay Municipal Utility District
- 4 Grassland Water District
- 5 San Francisco Public Utilities Commission
 - Bay Area Water Supply & Conservation Agency
- 6 San Luis & Delta-Mendota Water Authority
 - Byron Bethany Irrigation District
 - City of Tracy
 - Del Puerto Water District
 - Panoche Water District
 - Westlands Water District
- 7 Santa Clara Valley Water District
- 8 Zone 7 Water Agency



PROJECT FUNDING

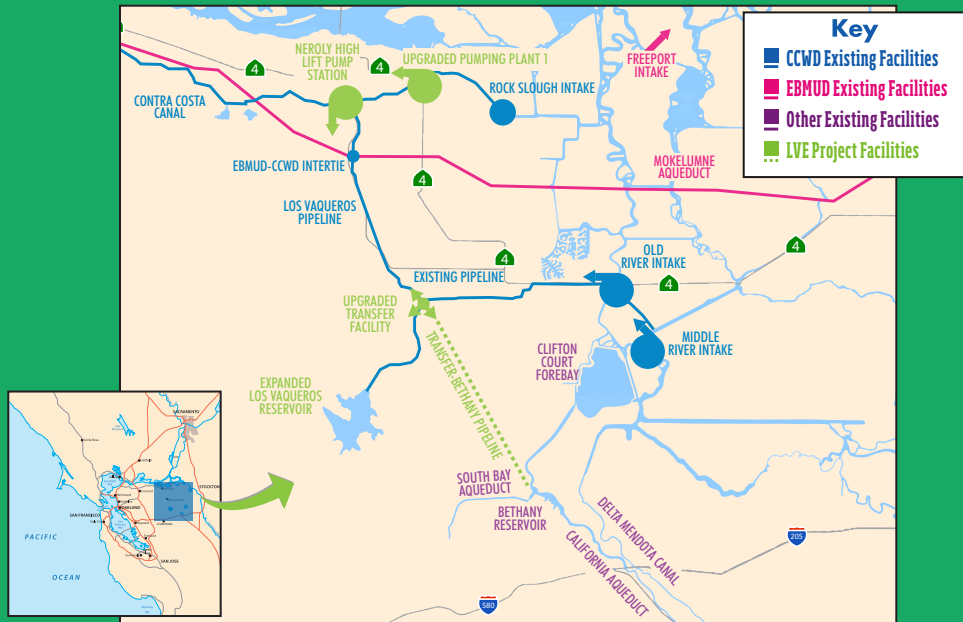
- Total development and construction cost ~\$980 M* (2022 Dollars)
 - Since the passage of Prop 1 in November 2014, inflation has increased construction costs by more than 40% based on ENR index
- State funding from California Water Commission
 - Total project development and construction costs escalated through the end of construction ~\$1.25 B
 - Supports public benefits, maximizing wildlife refuge benefits
- Local funding from partner agencies
 - JPA is seeking a WIFIA Loan
 - Supports regional reliability
- Federal funding from WIIN Act and Bipartisan Infrastructure Law funding has been authorized
 - Supports wildlife refuges



*The source of the cost estimate is the WIFIA Loan Letter of Interest submitted to US EPA in September 2022.

HOW IT WORKS

- 1 Water is pumped into the system from one of four existing Delta Intakes.
- 2 Once in the system, water is sent to an upgraded Transfer Facility pump station.
- 3 From CCWD's Transfer Facility, water can be delivered directly to local agency partners and wildlife refuges or pumped into an expanded Los Vaqueros Reservoir for later delivery.



NEXT STEPS

The JPA is currently working with state and federal agencies, including wildlife refuge managers, to advance the project to construction.

