



### Museum Closed

In the best interest of our visitors and volunteers at the museum, we will remain closed for the month of June.

The museum will be open July 1, see page 8 for details.

We are postponing all Historical Society events and visitation to the museum until the Covid-19 virus pandemic is well under control and no longer a threat to our community.

### *Message from the President . . .*

Hi All,

### *Building Addition Construction Continues*

With the ferry dock fixed and able to transport concrete trucks again, along with the Covid-19 lockdown being lifted for construction projects, the work on our museum addition has begun again.

Last fall we were preparing to install the concrete floor when the ferry dock broke. We could not get concrete to the island. However, we did install temporary plywood flooring in areas so that the electricians, plumbers and heating contractors could continue their work. Their work was then completed in the winter and construction halted while we waited for concrete. Then along came the Covid-19 virus pandemic and all construction in the State was stopped by order of the Governor. In mid-May the lockdown on construction was lifted under a strict set of rules regarding monitoring the health of workers and practicing social distancing. Under those new rules we had a couple of college students come in and get the temporary interior scaffolding down and the

*continued on page 2 . . .*

### *What Was It Like Back Then?*

This year our newsletters are going to feature a new section called "What Was It Like Back Then?". Each month this section will highlight how people lived in the 18<sup>th</sup> and 19<sup>th</sup> centuries.

Finally, the weather is getting nicer, temperature is increasing, and the rainstorms are shorter (1 day versus 2 weeks). As temperature goes up so does our craving for ice cream.

### *Ice Cream*

Before the invention of the home refrigerator, ice cream was a treat since it required ice. If you had an icehouse to store the ice cut from the river during the winter, you could make ice cream.

Another important ingredient was the sabottiere. The sabottiere is the inner canister shown in the picture on the next page. The prepared ingredients would be placed in the canister with the lid secured. The sabottiere was then placed in a bucket where a mixture of ice and salt was packed around it.

The handle of the canister would be turned clockwise and then counterclockwise, for whatever length of time the recipe specified.

*continued on page 2 . . .*

*President's Letter . . . continued from page 1 . . .*

temporary plywood flooring up and stored away. The addition is now ready for the installation of the concrete floor, which is scheduled to go in the first half June. After that we will be installing insulation and metal furring inside on the block walls, followed by drywall. Then we need painting, floor finishes, one partition and some electrical fixtures. At that point we will be ready to move in and build storage shelving and displays.

Of course, we had originally hoped to open the addition for a tenth anniversary celebration in May on Memorial Day weekend. Unfortunately, due to the construction delays and the virus this did not happen. It is our hope that we can have some type of event later this year to celebrate the completion of the building addition, even if we do not have displays in place. Only time will tell.

Stay safe,

Bob Williams, President (xharpspah@aol.com)

*What Was It Like Back Then? . . . continued from page 1 . . .*

Whether you like ice cream, gelato, sherbet, Italian ice, sorbet, frozen custard, frozen yogurt, soft-serve or a snow cone . . .

ENJOY!



## Ice Cream Recipe from Thomas Jefferson

**ICE CREAM.**

A quart of rich cream.  
Half a pound of powdered loaf sugar.  
The juice of two large lemons, or a pint of strawberries or raspberries.

Put the cream into a broad pan. Then stir in the sugar by degrees, and when all is well mixed, strain it through a sieve.

Put it into a tin that has a close cover, and set it in a tub. Fill the tub with ice broken into very small pieces, and strew among the ice a large quantity of salt, taking care that none of the salt gets into the cream. Scrape the cream down with a spoon as it freezes round the edges of the tin. While the cream is freezing, stir in gradually the lemon-juice, or the juice of a pint of mashed strawberries or raspberries. When it is all frozen, dip the tin in lukewarm water; take out the cream, and fill your glasses; but not till a few minutes before you want to use it, as it will very soon melt.

You may heighten the colour of the red fruit, by a little cochineal.

Cochineal is red food coloring – I had to look it up ☺

Source: <https://damselsinregress.wordpress.com/2010/07/04/ice-cream-a-la-1800s/>

## Help Us Record This Historic Time

By Bob Williams

This is truly an historic time in the world and right here on the island. The island, as you know, is also dealing with the high-water crisis and the ferry dock problem, which led to a lack of being able to bring sand to the island to aid in shoreline protection.

I have a favor to ask.

Decades from now people visiting our museum will be asking what was happening on the island during the pandemic and how did it affect the islanders. I believe that, as a Society, we need to not only make available the history we know of but also to record history as it happens.

Recently I received an email from the Historical Society of Michigan (HSM) describing a project they have undertaken for the Library of Michigan, to record stories of this time in Michigan's history. Some of the text from that email is copied for you at the bottom of this message. HSM is asking Michiganders to write their story of their experiences during this historic time.

Being quite involved in family tree research, I have many times wondered what my ancestors were doing and thinking during events such as the Great Depression, the world wars, or the pandemic of 1918. As a result, I began a diary about eight weeks ago, for the purpose of leaving a record for my descendants. I also plan to leave a copy of that diary in the files of our museum. I would like to encourage you to add to that file by writing a bit about your experiences during this time in your life on the island. It is our intent to collect all of the articles received and compile them into one document that will not only be on file at the museum but will also be submitted to the Library of Michigan to become a part of their project.

If you are interested in being a part of this project, please send your writings to me at [xharpspah@aol.com](mailto:xharpspah@aol.com) . If you would like a few ideas to get started, you can see the HSM webpage about their project at: <https://bit.ly/2ynT8rj>

Thank you and stay safe.

Robert Williams

---

---

### BELOW IS PART OF THE EMAIL I RECEIVED FROM HSM ABOUT THEIR PROJECT

The Historical Society of Michigan is sponsoring an effort of the Library of Michigan to collect your stories of life during the coronavirus pandemic.

The COVID-19 pandemic has affected all of us in many different ways, and we are all eyewitnesses to the events that have been unfolding in the last few weeks. This is a time for us to record our daily experiences, thoughts, and feelings in diary form, either in writing or video.

The Library of Michigan and the Historical Society of Michigan envision collecting and preserving these stories of our daily lives during the crisis to provide future historians, researchers, and students with information and data on life in Michigan communities during the pandemic.

Please take the time each day to record your activities, thoughts, and/or feelings in diary form. The entries can be handwritten, typed, or in video format, and they can be as long or short as you want. Don't worry about handwriting, spelling, or punctuation. The goal is to capture your personal experiences.

Please consider saving and sharing your story of life during this pandemic for the Library of Michigan.



## Grand Pointe Hotel

By Chris Knight

There have been many hotels on Harsens Island in the past 130 years and many thriving from the 1880s through the 1930s, when large passenger steamboats brought visitors from Detroit. One of the grandest, the Grand Pointe Hotel, had the shortest life. The hotel opened in 1890 with 60 rooms and added rooms in 1902 and 1906 bringing the total to 150 rooms. Tragically, the hotel burnt down in 1909 and was never rebuilt.

The hotel had a handsome park of 10 acres and was adjacent to Grand Pointe Farm which supplied the fresh fruits, vegetables, butter, eggs, Jersey milk, and cream daily. All the rooms had a view of the water and on the north side there was a beautiful gravel and sand beach. Many rooms had private bathrooms. The hotel had elegant parlors for the ladies, smoking rooms for the gentlemen, a large dance hall and playrooms for the children.



*Grand Pointe Hotel*

RATES (1907) \$2.50 to \$3.00 Per Day	AMUSEMENTS: Fishing, cruising, bowling, bathing, bicycling, driving, tennis, dancing, boating. Complete outfit of launches, row boats, fishing tackle, bait, etc., at the Boat House.
--	---

**A DAY'S OUTING:**

Special arrangements have been made with the White Star Line, so Detroiters may have a delightful day's outing on the elegant Steamer Tashmoo, which includes a ride to and from Grande Pointe, dinner at the Hotel, half a day's outing on the island, all for \$1.25.

*continued on page 5 . . .*

*Grand Pointe Hotel . . . continued from page 4 . . .*



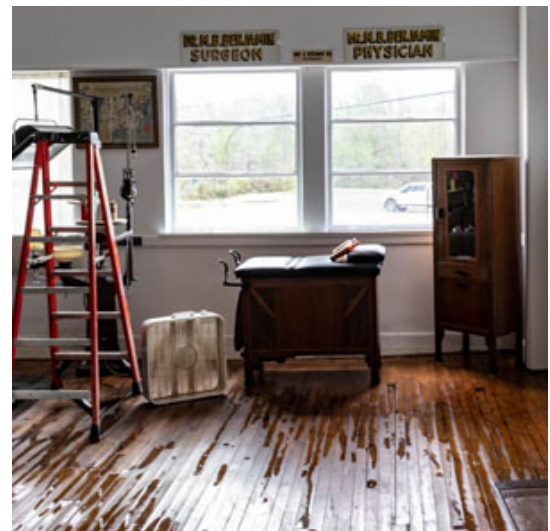
*Grand Pointe Hotel Burning in 1906*

### **Midland County Historical Museums Flood Relief**

As most of you know Midland County was devastated by a flood when two of their dams failed. The flooding impacted Midland and Sanford affecting many residents and two historical societies; The Midland County Historical Society and the Sanford Centennial Museum complex.

If you can help these organizations go to GoFundMe and search for:

**[Midland County History Museums Flood Relief](#)**





### Mid-Channel Golf and Country Club

I was looking through Jane Wright's Scrapbook from the Museum's Library and I found this brochure from circa 1920s – 1930s. I thought you might enjoy a look at the offerings of the Country Club from 100 years ago.




CIRCA 1920-1930s

### Water Way to A Golfing Day

## Mid-Channel Golf and Country Club

Harsen's Island, Adjoining Tashmoo Park

A beautiful ride through Detroit River, passing Grosse Pointe Shores, across Lake St. Clair, along the Venice of America with its Beautiful Club Houses and Summer Homes. Music and Dancing until you arrive at Tashmoo.

**T**HE Mid-Channel Golf and Country Club is the sunshine golf course of the Venice of America; situated on Harsen's Island, just two and one-half hours ride across the beautiful Lake St. Clair, along the main channel to Tashmoo Park. After enjoying the music and dancing while crossing the lake, you will have four hours to enjoy yourself at the Mid-Channel Golf and Country Club, so don't forget your clubs. You need not walk from Tashmoo Park, as there will be a bus to take you to the Mid-Channel Golf and Country Club; one of the most beautiful golf clubs in the world.

This golf club has an eighteen-hole course surrounded by beautiful trees and fairways. There is always a cool river breeze blowing across the course no matter how warm the day. There are other amusements for those who do not golf, such as Tennis, Croquet, Archery, Swings and Bridge.

Birds Eye View of the Fairway, 18 Hole Course



*continued on page 7...*

*Mid-Channel Golf and Country Club . . . continued from page 6 . . .*



Approaching a Cool Spot on the Fairway

Power boats, drawing five feet of water, can tie up the entire width of the golf course. There are three cuts dredged to the proper depth on the middle channel just off of the north channel. All these lead to the golf course.



OUR BUSS

Will pick you up at the Tashmoo landing and take you to the Links. Just a short ride.



View of Our Club House

The Mid-Channel Golf and Country Club has its clubhouse situated among beautiful shade trees with a spacious veranda surrounding it. The clubhouse can take care of one hundred guests and is fully equipped with lockers, showers, dormitories, a large lounging room and rest rooms for ladies. Meals can be served in private dining rooms by calling Algonac 100 for reservations.

The Mid-Channel Golf and Country Club green fees on week days are \$1.50, and on Sundays and Holidays \$2.00. This includes the trip by bus to and from the golf course which is only a short distance.

The Mid-Channel Golf and Country Club can also be reached by ferry from Algonac if you wish to drive.



View of Lounging Room



### **Museum will be Open to Visitors July 1, 2020**

The Harsens Island St. Clair Flats Historical Society Museum is planning to open for the summer beginning July 1, 2020, subject to compliance with all orders of the Governor of the State of Michigan and the following procedure established by the Board of Directors of the museum. This plan is subject to change prior to July 1.

1. No donated items are being accepted at this time.
2. Admission to the museum will be by appointment only.
3. Museum will be available for **appointments on Saturdays and Sundays from Noon to 3 PM.**
4. Appointments can be made by calling Bob Williams at 248-388-0465 or emailing [xharpspah@aol.com](mailto:xharpspah@aol.com)
5. When the museum is opened for a pre-arranged appointment, no additional walkup visitors will be admitted.
6. At each appointment time only one family of no more than ten persons will be admitted.
7. Museum appointment visits are limited to 20 minutes unless special arrangements are made in advance.
8. All visitors over the age of two must wear face masks at all times in the museum.
9. Visitors must come prepared with their own face masks.
10. Gloves are optional for visitors. Optional gloves would be the responsibility of the visitor.
11. Hand sanitizer will be available at the door as you enter.
12. All visitors must use the hand sanitizer upon entering the museum.
13. We ask that all visitors refrain from touching displays, objects and surfaces, except the door handle and the hand sanitizer bottle.
14. Toilet facilities will not be available to visitors.
15. Visitors should maintain social distancing from the museum host.
16. Sales from the gift shop will be at the discretion of the host on duty. Any purchases made should be done with exact change.



# Harsens Island Historical Society Calendar 2020

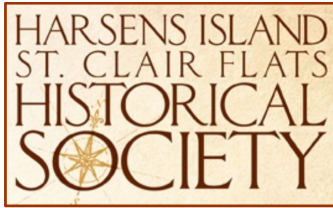
All events and meeting are subject to change due to Stay-at-Home orders from the state of Michigan

Date	Day	Time	Event
Postponed			Museum Host Orientation at the Museum
Cancelled			Board / Membership Meeting at the Museum (June)
Cancelled			Social Hour at the Museum (June)
July 3	Friday	8:00 PM	Board / Membership Meeting at the Museum
July 10	Friday	6:00 PM – 8:00 PM	Social Hour at the Museum
August 14	Friday	6:00 PM – 8:00 PM	Social Hour at the Museum
August 15	Saturday	4:30 PM – 5:00 PM 5:00 PM – 6:00 PM	Wine and Appetizers at the Museum Annual Membership Meeting (Election results)
September 13	Friday	6:00 PM – 8:00 PM	Social Hour at the Museum
October 3	Saturday	10:00 AM – 1:00 PM	Pie Sale at the Museum
October 10	Saturday	10:30 AM	Board / Membership Meeting at Museum
December 5	Saturday	10:00 AM – 1:00 PM	Cookie Walk at the Museum



## Museum Hours (Subject to change)

Summer Schedule
June
Closed
July (by appointment)
Saturday and Sunday Noon to 3 PM
August
To be Announced
Winter Schedule (September through May)
Closed but Open by appointment



A publication of the Harsens Island St. Clair Flats Historical Society

**Mailing Address:**

PO Box 44  
Harsens Island MI 48028

**Museum Address:**

3058 S. Channel Dr.

<https://harsensislandhistory.org>

**HISCFHS Board of Directors**

Chairman of the Board

**Open Position**

President

**Bob Williams**

1st Vice President

**Sue Wrobel**

2nd Vice President

**Corinne Trexler**

Treasurer

**Joyce Hassen**

Secretary

**Nancy Bonacquisti**

Directors

**Terry Wiggins**

**Donna Krispin**

**Christine Knight**



The historical society is still collecting photos and stories about the high water of 2019 and 2020. Please contact our interim curator, Chris Knight ([chris.knight@comcast.net](mailto:chris.knight@comcast.net)).

---

---

**Please Vote**

Ballots have been mailed to members. This year we have three candidates for the two three-year positions on the Board of Directors. The three candidates are:

- Sue Wrobel
- Ellen Probst
- Linda Schoonover

Please complete the ballot and return by July 3rd to the Historical Society per the instructions on the ballot.

---

---

**Volunteer to be a Host at the Museum this Summer**

**Volunteer for 3 (2 hour) shifts and get a Free T-Shirt from the Museum Gift Shop**

**Orientation – To Be Announced**

**Contact Corinne Trexler for additional information 313-530-9173**

