

# Reducing lamb losses for Better Returns



**The information in this booklet was compiled by Katie Brian and Liz Genever, EBLEX.**

**The Sheep Better Returns Programme is grateful to all those who have commented and contributed to this publication.**

**Photography: Fiona Lovatt, NADIS, Shearwell**

For more information contact:

**Better Returns Programme  
EBLEX  
Stoneleigh Park  
Kenilworth  
Warwickshire  
CV8 2TL  
Tel: 0870 241 8829  
Fax: 0844 774 6253**

**Email: [brp@eblex.ahdb.org.uk](mailto:brp@eblex.ahdb.org.uk)  
[www.eblex.org.uk](http://www.eblex.org.uk)**

EBLEX is a division of the Agriculture and Horticulture Development Board (AHDB).

©Agriculture and Horticulture Development Board 2012.  
All rights reserved.

While the Agriculture and Horticulture Development Board, operating through its EBLEX division, seeks to ensure that the information contained within this document is accurate at the time of printing, no warranty is given in respect thereof and, to the maximum extent permitted by law, the Agriculture and Horticulture Development Board accepts no liability for loss, damage or injury howsoever caused (including that caused by negligence) or suffered directly or indirectly in relation to information and opinions contained in or omitted from this document.

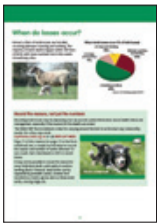
The text of this document (this excludes, where present, any logos) may be reproduced free of charge in any format or medium providing that it is reproduced accurately and not in a misleading context. The material must be acknowledged as Agriculture and Horticulture Development Board copyright and the document title specified. Where third party material has been identified, permission from the respective copyright holder must be sought.

Any enquiries regarding this document should be sent to: EBLEX Division, AHDB, Stoneleigh Park, Kenilworth, Warwickshire CV8 2TL.



**Better Returns  
Programme**

# Contents



## 2 When do losses occur?

## 3 Why do losses occur?

## 4 Choice of production system

## 6 Match sheep to the system

## 7 Improving output potential before lambing starts

## 8 Other ewe issues

## 9 Reducing the risk of abortion

## 10 Give lambs the best start in life

## 12 Reducing very young lamb deaths

## 17 Infectious diseases

## 19 Problems in ewes that can affect lamb survival

## 20 Health issues causing losses in older lambs

## 21 Lamb losses record sheet



Improving animal performance and reducing physical losses is key to ensuring sheep farming is profitable.

Recent data from a lambing project carried out in Wales, suggest losses of around 10–25% between scanning the ewes and the sale of their lambs. Generally, most occur during pregnancy or in the first week of life.

Farmers are often surprised to find out just how many lambs they do lose. This is partly because many are not visualised as dead animals, ie they either die inside the ewe, or are aborted as fetuses.

Infectious abortions continue to account for a significant percentage of losses on lowland farms. Weather is also a significant factor – impacting on ewe condition leading up to lambing, and affecting lambs at birth.

Reducing lamb losses has to take various factors into account, including the sheep farming system, ewe body condition, nutrition, health planning and stockmanship. The target should be to optimise scanning percentage, ie the number of embryos created, and to minimise lamb losses to the point of sale.

The first step is to look at and analyse farm records to understand what is happening now. Comparing scanning, lambing and rearing percentages between years, and with national benchmarks, will highlight where problems occur and indicate where action is needed.



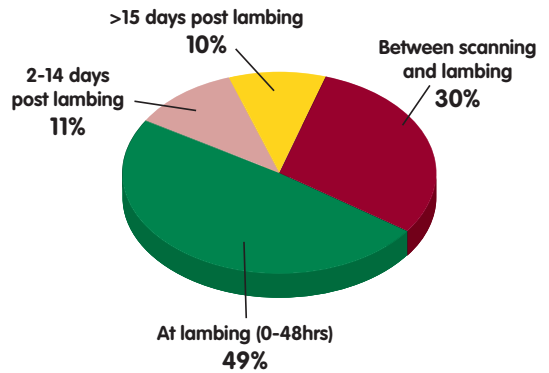
Katie Brian  
EBLEX Project Manager

# When do losses occur?

Almost a third of lamb losses are 'invisible', occurring between scanning and lambing. The majority of lamb deaths happen within 48 hours of birth, with lower numbers lost in the weeks immediately after.



When lamb losses occur (% of total losses)



Source: HCC lambing project 2010/11

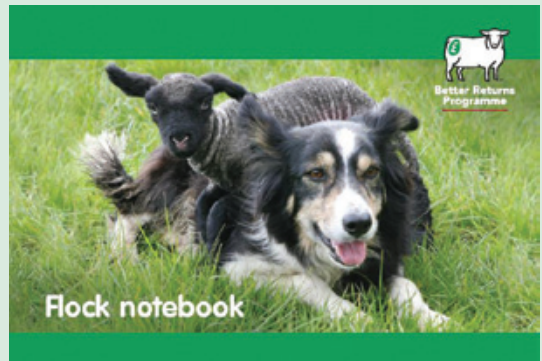
## Record the reasons, not just the numbers

Recording lamb losses may be depressing, but can provide useful information about health status and management, especially if the reasons for the deaths are noted.

The EBLEX BRP **Flock notebook** is ideal for carrying around the farm to write down any noteworthy events. For a free copy email [brp@eblex.ahdb.org.uk](mailto:brp@eblex.ahdb.org.uk) or call **0870 241 8829**.

Page 21 of this manual (or page 12 in the Flock notebook) has a sample record sheet to record the reason and number of lambs affected. Or use a wall chart, blackboard or EID to record losses.

It may not be possible to record the reason for every individual death, particularly in outdoor lambing flocks. However, dead lambs can be separated by probable causes, counted and recorded as a batch, eg two laid on, three small lambs, one big single, etc.





# Why do losses occur?

Recording events at and around lambing offers clues to why losses are happening. Five key measures will indicate where the problems lie.

**A Ewes tupped** – the total number of ewes/ewe lambs put to the tup

**B Lambs scanned** – calculated from the results of pregnancy. Scanning percentage is the number of lambs scanned divided by the number of ewes put to the tup x 100

**C Lambing percentage** – when compared to lambs scanned, this indicates how many lambs have been lost during pregnancy through absorption or abortion. When compared to the number of lambs born dead it can highlight health problems such as underlying infectious abortion or nutritional deficiencies

**D Lambs turned out** – when compared to lambs born, shows how many lambs are lost during the first few days of life. A fall in numbers could indicate underlying health problems, hygiene issues or problems with colostrum intake

**E Rearing percentage** – comparing rearing percentage, or lambs weaned/sold, to lambs turned out gives an indication of mortality during the lambs first few months. These are more likely to be related to health problems, such as inadequate control of worms and infectious diseases. Rearing percentage is the number of lambs reared divided by the number of ewes put to the tup x 100

Where ewes give birth outdoors, lambing percentage and lambs turned out may be replaced by a figure for lambs tailed. This is generally done a couple of weeks after lambing, but is still an important measure. The target for tailing could be based on the lambs turned out figure

	System standards		
	Lowland	Upland	Hill
A Ewes tupped	100	100	100
B Lambs scanned	195	175	116
C Lambing percentage	183	166	112
D Lambs turned out	172	156	104
E Rearing percentage	168	151	100
<b>Lamb losses</b>			
Scanning to birth (B-C)	12 (6%)	9 (5%)	4 (3%)
Birth to turn-out (C-D)	11 (6%)	20 (6%)	8 (7%)
Turn-out to weaning/sale (D-E)	4 (2%)	5 (3%)	4 (3%)
Birth to sale (C-E)	15 (8%)	15 (9%)	12 (10%)
Scanning to sale (B-E)	27 (14%)	24 (14%)	16 (14%)

# Choice of production system

## Indoor lambing



Pros	Cons
Protects the sheep and staff from the weather at this stressful time	Higher cost as more labour required which has to be justified by higher output
Gives pasture a chance to recover/grow	Increased risk of infectious disease
Increased supervision	Risk of mis-mothering

## Best practice

- Employ one experienced lamber for every 250 ewes
- Keep group pens freshly bedded (clean and dry)
- Offer adequate lying area in each pen. For a 60-90kg ewe: 1.2-1.4m<sup>2</sup> during pregnancy and 2.0-2.2m<sup>2</sup> with lambs (reduce by 10% for shorn sheep)
- Allow one individual pen for a maximum of eight to ten ewes
- Spread dry disinfectant or quick lime before re-bedding individual pens between ewes. Ensure walls and floors are also treated
- Provide small group pens for ewes to mother-up – especially important for weak and fostered lambs
- Provide one adopter pen and one isolation pen per 50 ewes
- Supply adequate fresh clean water for ewes – they can drink seven to ten litres a day when lambed
- Organise lambing equipment well in advance, including spare colostrum supplies and lamb warming box
- Employ high hygiene standards – treat navels, use disposable gloves and wash hands regularly
- Provide hot and cold water for lambers
- Ensure enough power points are available

If housing is limited give priority to older ewes, first crop ewes, ewes expecting multiple lambs and ewes with a Body Condition Score (BCS) below target.

## Outdoor lambing



Pros	Cons
Can reduce feed and labour costs	Can be more difficult to collect data and tag at birth
Less interference for the ewes	Less supervision and more difficult to foster if required
Reduced risk of infectious disease	Higher losses may occur, especially if weather is poor

### Best practice

- Employ one experienced lamber for 600-1000 ewes
- Select sheltered fields
- Manage grazing to ensure pasture is available to freshly lambing ewes and their offspring. Aim for 6cm sward height or 1800kg DM/ha to avoid mis-mothering and abandonment
- Some individual pens should be available for any problems
- Supply adequate fresh clean water for ewes
- Organise lambing equipment well in advance, including spare colostrum supplies and lamb warming box
- Employ high hygiene standards if assisting ewes lambing – use disposable gloves and wash hands regularly

# Match sheep to the system

## Ewes

Outdoor lambing ensures a strong selection pressure for ewes that are able to lamb with least intervention.

Reducing the labour requirement should also be a goal for producers lambing indoors.

Permanently marking ewes physically with an ear notch or electronically, for poor mothering behaviour or problems such as low colostrum yield will help cull undesirable traits out of the flock.



When breeding replacements, either for indoor or outdoor lambing systems, maternal traits are extremely important.

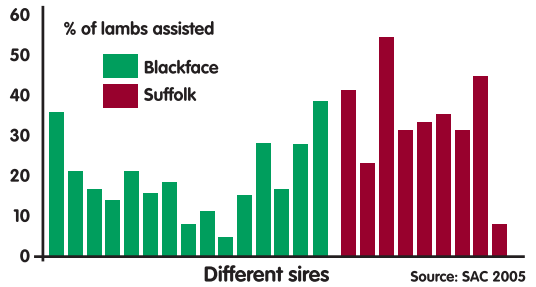
Give each ewe and female lamb a lambing score. Using this system to cull poor mothers and select replacements can significantly improve the flock's maternal ability in future years.

Score	-1	0	+1
Lambing ease	Assisted	Minor help	No assistance
Mothering ability	Leaves lambs	Stands well back	Follows whatever
Lamb vigour	Needs help to suck	Slow to suck	Up and sucks

## Rams

Different rams will produce different types of lambs in terms of their 'get-up-and-go' at birth – see the graph below.

Differences between sires and breeds in % of lambs assisted to be born



Purchase or select sires for ability to lamb without assistance. Rams that were born without help, are more likely to produce offspring that do not need help at lambing.

	Typical lowland breed	Easier management goal
Time to stand	50 mins	25 mins
Time to suck successfully	100 mins	30 mins

The faster a lamb is up and sucking, the less need there will be for human intervention.

If breeding ram lambs use lambing scores to assess which to keep for breeding. Castrate any with a negative score.

Estimated Breeding Values (EBVs) for lamb vigour, lambing ease and birthweight are now available for certain breeds, and can be used to select rams to produce ewes that are more likely to lamb without any assistance.



# Improving output potential before lambing starts

There are non-infectious issues to consider before lambing which can improve ewe and lamb survival.

## Body condition

Management of body condition is the driver for every sheep enterprise. Ensuring ewes are on target at various stages of the production year ensures they are fit and robust, which will help reduce lamb losses.

Body condition targets			
	Hill ewes	Upland ewes	Lowland ewes
At weaning	2	2	2.5
At tupping	2.5	3	3.5
Mid-pregnancy	2	2.5	3
At lambing	2	2.5	3

Stress can increase losses, especially during early and mid-pregnancy, so handle ewes quietly. Prolonged cold weather or limited grazing can also stress ewes at this critical time and cause embryo death.

## Nutrition

The size of the lamb can be the reason for a loss – either too big or too small. This problem can be reduced through careful feeding pre-lambing.

Use body condition scores and the results of scanning at around 70 days to group ewes into similar batches. Pay special attention to triplets which require supplementary feeding sooner than those carrying twins or singles.

It is essential to analyse winter forages and ensure rations are balanced to stop problems arising. Aim for a tight lambing period so more ewes will have a similar feed requirement at the same time.

Overfeeding concentrates adds cost, reduces forage intake and can cause acidosis which damages the rumen lining.

Underfeeding pregnant ewes can lead to them giving birth to light or sickly lambs. It can also reduce their milk yield, reducing lamb growth rates and increasing the risk of mastitis, as their lambs persistently nudge the udder for more milk.

EBLEX recommends asking the vet to blood test a group of ten to 12 ewes, three to four weeks before lambing and, ideally four hours after the last supplementary feed. The vet will look for levels of beta-hydroxybutyrate (BOHB) and urea. BOHB is produced when ewes mobilise body reserves in the absence of sufficient dietary energy. The Moredun Research Institute regards BOHB levels of 1.1 mmol/litre or higher, as a sign that additional feed energy may be needed to guard against twin lamb disease.

Blood urea is a by-product of dietary protein broken down in the liver. Levels of less than 2-3 mmol/litre suggests the diet is lacking protein.



EBLEX Sheep BRP Manual 11 – **Target ewe fertility for Better Returns** has more details on how to look after ewes at each stage of pregnancy.

Email [brp@eblex.ahdb.org.uk](mailto:brp@eblex.ahdb.org.uk) or call **0870 241 8829** for a free copy, or download from [www.eblex.org.uk](http://www.eblex.org.uk).



EBLEX Sheep BRP Manual 12 – **Improving ewe nutrition for Better Returns** has more details on feeding ewes at each stage of production.

Email [brp@eblex.ahdb.org.uk](mailto:brp@eblex.ahdb.org.uk) or call **0870 241 8829** for a free copy, or download from [www.eblex.org.uk](http://www.eblex.org.uk).

# Other ewe issues

## Prolapse



Prolapse is a major cause of ewe deaths at lambing, and occurs in late pregnancy. It results in mild to extreme damage to the cervix.

Close observation of ewes is essential to intervene at the earliest possible time. Affected ewes need a restraining harness or possibly veterinary treatment. Those carrying multiple litters are more prone to prolapse but overfeeding in late pregnancy will also increase the incidence.

## Pregnancy toxæmia (Twin lamb disease)

A metabolic disorder that occurs in the last four to six weeks of pregnancy. Twin lamb disease can affect any ewe, but those with low or high BCS or carrying multiples are most at risk. It occurs due to a lack of energy intake and decreased blood glucose levels.

The ewe isolates herself, looks dull, will not eat, might appear blind and lies down. She will require glucose treatment as soon as she goes off her food to give the best chance of survival for both the ewe and the lambs.

## Hypocalcaemia

A metabolic disorder that normally occurs in the last four weeks of pregnancy due to the lamb's demand for calcium being greater than the diet is providing. Affected ewes are unsteady, lie down and gradually become comatose and die.

Treat by giving a calcium injection (50-80ml) under the skin. Within an hour the ewe should look brighter. Check the diet if a number of ewes are affected.

## Feeding ewes lambing outdoors

For outdoor lambing flocks, start ewes lean at body condition score 2.5-3.0 and match lambing date to a time when pasture growth picks up in spring. Ensure there is 6cm of sward height when the ewes have started lambing. Do not feed concentrates in troughs as this disturbs grazing and lambing behaviour. However, supplementary feeds provided in buckets or blocks can improve colostrum quality and lamb survival.

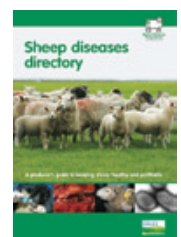


Problems such as parasitic gastroenteritis (internal worms) and liver fluke will lower the body condition of ewes. This will be made worse for ewes with large litter sizes. If not corrected,

they are likely to give birth to small lambs and have poor colostrum supply.

The BRP **Sheep Diseases Directory** provides an A-Z of the most common sheep diseases and is available free of charge from EBLEX.

Email [brp@eblex.ahdb.org.uk](mailto:brp@eblex.ahdb.org.uk) or call **0870 241 8829** or download at [www.eblex.org.uk](http://www.eblex.org.uk).



# Reducing the risk of abortion

Three types of infectious abortion are responsible for 86% of all sheep abortions.

## Enzootic abortion (EAE) (52%)

Caused by the bacteria *Chlamydia abortus*. Results in full-term still-born or weak lambs. It can affect litter mates to different degrees, eg one can be dead and one alive.



### Transmission:

From sheep to sheep, only at lambing time as pasture/bedding is contaminated by aborted/infected lambs. Sheep and lambs that have been infected will be carriers.

**Action:** Do not keep infected sheep or their lambs for replacements. Isolate aborted sheep for at least three to four weeks. Vaccinate all sheep at least four weeks before tupping. Have a vaccination programme for all replacements as part of the flock health plan.

## Toxoplasmosis (25%)

Caused by a protozoan parasite *Toxoplasma gondii*. If infection occurs in early pregnancy the embryo dies and is reabsorbed. In mid-pregnancy the foetus dies and is mummified. Infection in late pregnancy produces full-term still-born or weak lambs.

**Transmission:** Cats to sheep, perhaps through feed, water or pasture contaminated with cat faeces. Young cats become infected when they start to hunt. Older cats have immunity.

**Action:** Isolate aborted sheep from pregnant ewes, but they can be kept with sheep that have lambed. Keep cats away from feed. Vaccinate all sheep at least four weeks before tupping. Have a vaccination programme for all replacements as part of the flock health plan.

## Campylobacter (9%)

Caused by the bacteria *Campylobacter fetus*. Results in full-term still-born or weak lambs.

**Transmission:** Sheep to sheep, but infection can be carried by birds.

**Action:** Isolate aborted sheep from pregnant ewes, but they can be kept with lambed sheep. This deliberate spread of infection will raise the immunity, as no vaccine is available.

### Standard procedure for aborted sheep

- 1 Isolate and permanently mark affected ewes
- 2 Adhere to strict biosecurity procedures, including disinfection when inspecting aborted ewes or dealing with infected materials
- 3 Collect samples of the foetus/lamb and afterbirth. Arrange test with a vet
- 4 Dispose of bedding and other infected materials carefully
- 5 Reduce stocking rate to reduce the risk of infection
- 6 Once cause is identified, consult with the vet for best treatment and control
- 7 Vaccinate flock, if vaccine is available

### Actions to prevent future infections

- Determine prevalence and cause of lamb losses
- Aim to reduce abortions to less than 2%, and barren rate to less than 5%
- Establish a health plan with the vet, which may include a vaccination programme
- Follow a strict biosecurity protocol for dealing with aborted ewes
- Check health status when purchasing replacement ewes

# Give lambs the best start in life

## Normal lambing behaviour

Ewes exhibit certain types of behaviour when they are about to lamb including:

- Pawing at the ground
- Alternate standing and lying
- Walking in circles
- Vocalisation/bleating

Labour is usually short but varies with litter size. The time between lambs arriving is normally about 20 minutes. Assistance should be given if labour for one lamb has lasted longer than one hour in experienced ewes, and over two hours in ewe lambs.



A long labour is associated with a large lamb, incorrect positioning, eg legs or head back, breach, or under-nutrition during pregnancy.

## Labour times for ewes with different litter sizes

Litter Size	Time taken (minutes) from the start of intense straining to birth of all lambs
Single	65
Twins	90
Triplets	120
Quads	160

(Source: Lynch, Hinch and Adams, 1992)

## Assistance at lambing

Most ewes will lamb without difficulty, but it is important to observe the ewes quietly to detect any problems that do arise. If a ewe needs assistance always have the following to hand:

- Disposable gloves (to reduce picking up any diseases and prevent spreading infections between ewes)
- Disinfectant
- Lubricant
- Antibiotic treatment (as prescribed by the vet)
- Pain relief/anti-inflammatory medication (as prescribed by the vet)

## Hygiene

- Keep all lambing equipment as clean as possible, disinfecting between births
- Wash hands before touching another sheep
- Wear disposable gloves to assist ewes
- Bed lambing areas well with clean straw
- Treat the lambs' navels with strong iodine solution, preferably alcohol-based, within 15 minutes of being born. Repeat at least once two to four hours later





Poor hygiene standards can increase the risk of infections in lambs such as watery mouth, joint ill, navel ill, and mastitis and metritis (uterus infection) in ewes. Strategic use of disinfectants can help reduce the incidence of these diseases.

## Lamb survival

It is important to have all the equipment ready that might be required to optimise lamb survival.

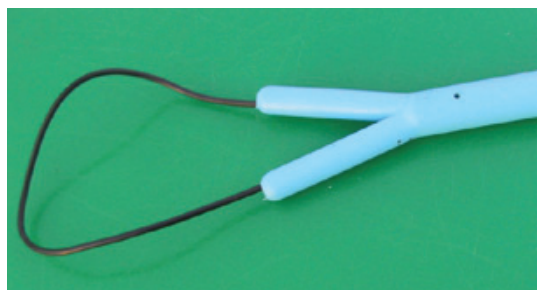
The lambing kit should contain:

- Lambing snare or lambing ropes
- Prolapse harnesses
- Strong iodine solution
- Sterile needles and syringes
- Thermometer
- Stomach tubes and syringes
- Michel's entropion clips to uncurl rolled up eyelids
- 40% glucose (dextrose) solution for injection
- Calcium borogluconate solution
- Twin lamb oral supplement for ewes
- Colostrum supply – ideally ewe colostrum, artificial ewe colostrum substitute, or pooled colostrum from Clostridial vaccinated cows
- Electrolyte sachets
- Sterilising solution for feeding bottles and stomach tubes



- Medicines as directed by the vet: anti-inflammatory drugs (reduce inflammation and pain) and antibiotics
- Disinfectant for floors and surfaces
- Reliable and readily available source of hot water
- Warming box
- Notebook, chart or other recording system for recording lamb and ewe losses, medication given etc
- Phone number of the vet and AHVLA centre

There should be hospital facilities on the farm where sick lambs or ewes can be isolated and treated.





# Reducing very young lamb deaths (under three days)

## Birthweight

Careful feeding of ewes will ensure optimum lamb birthweights, ie not too small and not too large.

Here are some example optimum lamb birthweights for ewes weighing 70-85kg tupped with a terminal sire.

- Single 4.5-6.0kg
- Twin 3.5-4.5kg
- Triplets – greater than 3.5kg

Birthweights more than 1kg lighter than these suggest under-nutrition of the ewe during late pregnancy. If birthweights are more than 1kg higher, there is a risk of lambing problems due to the large size of the lamb, increasing the chances of losses.

Hill breeds will have lambs with birthweights 1.0-1.5kg lighter than the figures above.

Small or weak lambs often fail to take in sufficient colostrum, and subsequently die from a variety of causes, including starvation, hypothermia, watery mouth and being laid on.

Stillbirths are the biggest loss recorded at lambing. Stillbirths can be due to infectious diseases but many occur from difficult lambings through injuries, trauma, or lack of oxygen.

Ensure ewes are fed according to litter size, and avoid under- or over-feeding.

## Lambing problems

Lambs that are poorly presented can become stuck inside the ewe, and 'drown' before they make it out. High birthweights and disturbance levels increase the risk, as do high litter size and low supervision levels.

## Mis-mothering

Mothering ability varies, but ewes in good condition, fed well and not disturbed in labour and just after giving birth, tend to be good mothers.

If ewes are disturbed they may leave their newborn lambs. Young ewes can become especially alarmed and may need to be penned to help them bond with

their offspring. Helping their lambs to start suckling may make them more accepting.



## Colostrum intake

Make sure lambs receive 50ml/kg of colostrum within the first four to six hours of life and continue to consume it during the first 24 hours of life.

In 24 hours, a newborn lamb must receive the equivalent of 200ml/kg bodyweight in colostrum. For example, a 5kg lamb needs 1 litre of colostrum in the first day of life.

Taking in sufficient colostrum is vital to provide the lamb with essential immunoglobulins and to protect against clostridial and other diseases depending on the ewe's vaccination status. Colostrum also provides energy, proteins, vitamins and minerals. It is nutritionally complete and a natural laxative.

Studies show that many lambs, particularly triplets and small lambs, do not receive sufficient colostrum during the first hours of life.

If extra supplies are needed, colostrum from another ewe in the flock is ideal. Frozen cows' colostrum can be used but discuss the risks of anaemia with the vet.

Do not overheat when thawing out frozen colostrum, as this destroys the vital antibodies.

## Weather

Poor weather around lambing can cause significant problems, especially if wet, cold and windy. Lambs are unable to maintain body temperature for long periods especially if colostrum intake is insufficient.

## Turned out too quickly

Lambs born indoors should only be turned out if:

- Dry
- Suckling well
- Well-bonded to their mothers
- The weather is not cold, wet or windy
- The ewe has plenty of milk

Turn out small groups at a time, allowing mothers and lambs to pair up.

Turning out weak lambs and mis-mothering can lead to high losses. Ensure field boundaries are secure so lambs cannot be mixed up. This will also prevent predators such as foxes gaining access.

Closely observe ewes and their lambs for the first few days. Ensure there is shelter from the weather. Provide trailers and or bales if no hedges are available. Make sure the ewes have plenty of food to maintain milk supply. Supplement with concentrate feed if grass growth is poor.

## Exposure and starvation

The biggest causes of young lambs dying are exposure and starvation.

Exposure leads to hypothermia which is caused when the lamb cannot produce heat as quickly as it loses it, eg when an unlicked, abandoned, wet lamb is left to shiver in cold weather. Starvation also leads to hypothermia – in essence a shortage of blood glucose, in lambs over 12 hours old which have none of the brown fat they were born with left, and no colostrum in their stomach.

This can often occur when lambs mis-mother, even if the weather is fine.

Look out for lambs with dirty necks as it can indicate stealing milk from other ewes.

## Take a lamb's temperature

- Insert thermometer into rectum to 4cm
- Read temperature after 30 seconds
- More than 40°C (104°F) – fever or overheating due to too much warming
- 39-40°C (102-104°F) – normal
- 37-39°C (99-102°F) – moderate hypothermia
- Less than 37°C (99°F) – severe hypothermia

Consider the age of the lamb. If it is more than five hours old, it is unlikely to have significant stores of brown fat left. Therefore, it is important not to warm it without providing glucose or milk first (see flow chart page 15).



## Warming a lamb

- Dry with a towel first
- Use warming boxes (at least 1.5m<sup>2</sup> and 1m high) with warm air fans. Aim for 35-37°C (95-99°F)
- Avoid infrared lamps as overheating can easily occur
- Retake temperature every 30 minutes. When over 37°C (99°F) remove lamb from box and give milk via stomach tube



## Feeding a lamb with a stomach tube

Lambs should be given extra colostrum if the ewe is lacking milk or it is of poor quality.

- Do not tube very weak or unconscious lambs
- Feed lambs with colostrum four to five times in the first 24 hours
- Prepare colostrum or, if lamb is older than 24 hours, the milk to blood temperature, but not in a microwave as it destroys the antibodies
- Sit on a bale with lamb on your lap
- Gently introduce a clean stomach tube via the left side of the mouth
- Do not force the tube down. Softening plastic tubes in warm water helps
- The tube should only reach to just below the lamb's shoulder. In small lambs measure the length of the tube from tip of nose to behind the shoulder before inserting to check it does not go too far in (see below)
- If lamb shows signs of distress remove and try again
- When tube in place, the lamb should show no sign of distress
- Attach syringe of colostrum/milk and depress plunger slowly for 20 seconds
- Leave tube in place and repeat until all feed given
- Remove tube and syringe
- Wash and sterilise tube and syringes. Leave in hypochlorite solution such as a baby bottle sterilising solution until required again



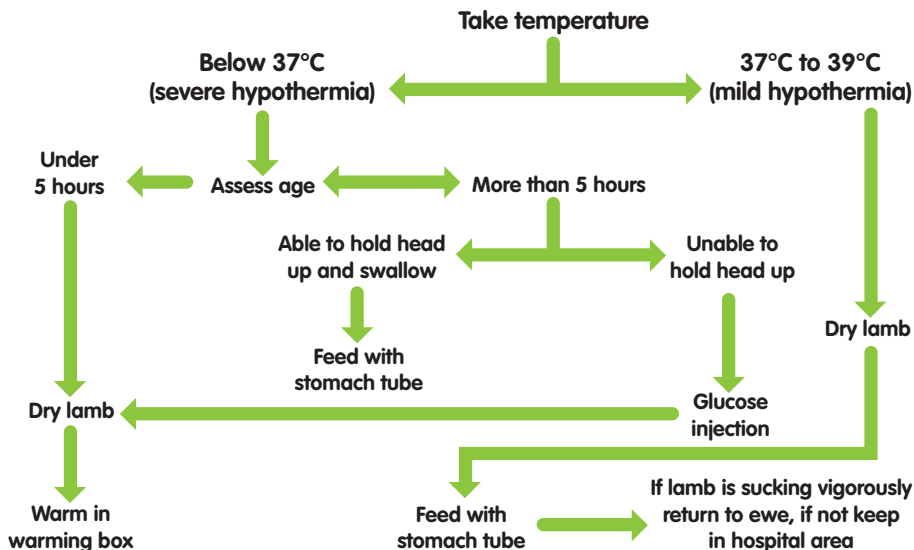
## Giving a glucose injection

- Ask the vet for a demonstration
- Use a sterile syringe and new needle each time
- Do not give to scouring lambs or those with watery mouth
- Prepare 10ml of 20% glucose solution per 1kg of bodyweight immediately before use. To make up a 20% solution draw up 10ml dextrose 40% or 40% glucose solution and add 10ml recently boiled water – ensure this is at blood temperature, ie warm but not a very hot solution
- Hold lamb by front legs and allow body to hang down
- Spray injection site – approximately 2.5cm (1inch) to the side and 2.5cm (1inch) below the navel – with iodine spray/antibacterial spray



- Use a 19 gauge 2.5cm (1inch) long needle
- Insert needle into the abdominal cavity at a 45° angle, so needle is aimed towards the lamb's rump (insert needle to the hub)
- Draw back slightly with syringe to check that no blood, urine or milk appear in syringe. If this happens, detach needle and syringe, and start again using a fresh needle and fresh solution
- Empty syringe and carefully withdraw
- Dispose of needle and disinfect syringe
- The vet may recommend a precautionary injection of long-acting antibiotic
- After the lamb has received glucose, warm up first and then give colostrum feed

## Lamb survival flow chart



## Lamb post mortem examination

Lamb survival is key to maximising rearing percentage, so it is worth spending time investigating the cause of any lamb deaths that do occur.

It is important to consult your veterinary surgeon and AHVLA for post mortem examinations and further investigations, but learning to open up young lambs three days old or less, to rule out common issues such as starvation, cold or difficult lambing, can help identify problems and inform changes in management or possible solutions. This is particularly useful for those lambs that may have been laid on and not seen sucking or standing.

**CAUTION:** Due to zoonotic risks (diseases transmitted from sheep to humans) never open up lambs that are suspected abortion cases or have abnormalities – always consult the vet on these cases.

Look at the coat, feet, navel, head and body for obvious signs of damage or abnormalities. Also at the fat reserves and for any blood clots in the abdomen, chest, stomach, intestines, lungs or thyroid glands.



Collect information on the age and sex, and whether there was any intervention at birth or treatments given, such as a stomach tube or antibiotics.

Simply weighing the lamb can provide useful information. Under 3kg suggests undernutrition and lack of body reserves. Heavier than 6kg would have increased the risk of lambing problems. Meconium staining, when the coat is yellow, indicates stress during delivery.

## Lamb post mortem on-farm investigation example

Example: Did the lamb die from starvation?		
Has the lamb been licked?	Yes	
Has the lamb walked?	Yes	The membranes (slippers) are no longer on its hooves
Is the navel normal?	Yes	No swelling. Starting to dry
Is the head normal?	Yes	No swelling
Is the body normal?	Yes	No swelling. No meconium (yellow) staining on fleece
Are the brown fat reserves still around the kidneys and heart?	No	The lamb used up its first energy reserves (generally within hours of birth)
Are there any blood clots in chest or abdomen?	No	If present it suggests birth difficulties
Is there any milk in the stomach or intestines?	No	No milk in the stomach or intestines suggests the lamb did not suckle
Did the lamb breathe?	Yes	Place a small piece of lung in water to see if it floats. Un-inflated lungs sink, which means the lamb never breathed
Any sign of iodine deficiency (enlarged thyroid glands)?	No	
<b>Answer: Yes the lamb died of starvation.</b>		
<p><b>If a lamb has died from starvation, it is worth checking:</b></p> <ul style="list-style-type: none"> <li>• Are both the ewe's teats clear and producing milk?</li> <li>• Is the colostrum supply good enough?</li> <li>• Are the ewes mis-mothering their lambs to look for feed?</li> <li>• Was the stocking density too high so ewes and lambs got confused?</li> <li>• Are the lambs checked for whether they have sucked within six hours?</li> <li>• Was it one of a triplet?</li> <li>• Is the lambing site exposed?</li> <li>• Has the weather been bad?</li> </ul>		

A post mortem form is available in the BRP section of the EBLEX website, visit [www.eblex.org.uk](http://www.eblex.org.uk).



# Infectious diseases and other issues that can affect young lambs

## Entropion (in-turned lower eyelids)

A common problem in some flocks, this condition is where the lower eyelids are rolled up and eyelashes constantly rub against the surface of the eye. This is very uncomfortable and makes the lamb's eyes runny and the cornea cloudy.

It can easily be corrected if detected early by pulling out the skin of the eyelid and pinching it slightly. Repeat if necessary until it stays in place. If not spotted at birth it has to be corrected by injecting antibiotics into the bottom lid or by using purpose-made Michel clips.



## Joint ill

Joint ill is caused by infection, which can be ingested or may enter the body through open wounds such as the navel in very young lambs or through tagging, docking or castration wounds in slightly older lambs.

Affected lambs are usually dull, with one or more swollen, painful joints. Infection can also occur in the spine, resulting in paralysis of either the hind limbs only, or all four legs.



## Navel infection

When ewes lamb outdoors, navel infections are rare unless the field is overcrowded or muddy. The risk with indoor lambing is much higher so it is very important to treat navels with strong iodine to encourage them to shrivel up and dry.

Wet navels can easily become infected with bacteria from the lambing environment. There is a danger that infections that start in the navel will track up the cord up to the liver. Lambs often do not respond to treatment.

Keep the lambing environment as clean as possible and the lying areas well bedded.



## Physical deformities

Lambs can be born with no opening to the rectum on the outside. The lamb appears normal until it cannot pass faeces. Its stomach becomes swollen and it stops suckling. There is little that can be done successfully to alleviate the problem and culling is the kindest course of action.



## Scouring

Diarrhoea in lambs can be caused by a number of reasons – nutritional changes (often seen in artificially reared lambs), bacteria (eg *E.coli*, *salmonellosis*, *clostridia*), virus infections (eg *rotavirus*) or protozoa (eg *cryptosporidiosis*). Scouring lambs do not thrive. If they are scouring due to an infection they will look ill.

## Trace element deficiencies

Copper, selenium and iodine deficiencies can all lead to problems in young lambs.

Copper is a difficult element to correct; too much is toxic and too little can cause swayback – causing



incoordination and a tendency to sway on their back legs. Some breeds are more susceptible than others.

Ewes that suffer from selenium deficiency can give birth to weak lambs. In older lambs up to six months old this manifests as White Muscle Disease (stiff lamb disease).

If issues like this arise, discuss them with the vet to find the best solution for the farm.

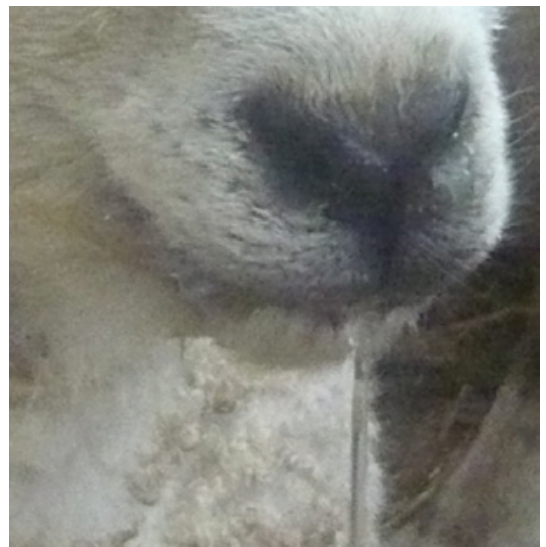
For more detailed information on trace elements and minerals see the BRP+ document **Trace Element Supplementation of Beef Cattle and Sheep** at [www.eblex.org.uk](http://www.eblex.org.uk).

## Watery Mouth

A common problem in many flocks, watery mouth is caused by lambs swallowing bacteria from the environment. The bacteria produces toxins which when absorbed by the lamb cause drooling, and swelling of the abdomen.

Affected lambs usually stop feeding, show signs of abdominal pain and are wet around the mouth. Lambs need to be treated rapidly with antibiotics and anti-inflammatory drugs or they will quickly die.

*E.coli* is commonly isolated from cases. However, inadequate colostrum intake is usually the underlying cause. Discuss control and prevention with the vet and check that ewe nutrition, body condition, and hygiene practices at lambing time are all optimal.



# Problems in ewes that can affect lamb survival

## Mastitis

Acute mastitis in ewes is rare and is usually seen in the first weeks after lambing. The ewe may stop her lambs suckling as her udder may become hot, swollen and painful. Infected ewes may not have milk in the affected half of her udder, but instead a watery liquid that may contain pus or blood. The amount of milk available to the lambs is reduced significantly.

Most cases of mastitis are sub-clinical udder infections carried over from the previous lambing, or chronic mastitis which usually occurs at weaning. The ewe may not look ill but overall milk yield will be reduced.



## Metritis

This is an infection in the uterus caused by an infectious abortion or after unhygienic interference for a difficult or assisted lambing. It can also be common following replacement of a uterus prolapse.

The ewe looks depressed, will not eat, or show interest in her lambs and she will often have a swollen vulva with a smelly discharge. The ewes milk yield will be reduced. She will require antibiotics and anti-inflammatory treatment.



## Listeriosis

This can occur at anytime of the year but most common when ewes are fed silage so must be considered if ewes are ill late pregnancy. During this time their immune system is less effective so they are more susceptible to disease.

The bacteria that cause listeriosis are found in the soil. If this is incorporated into the silage – if the grass was cut too low or there were a lot of molehills, the bacteria multiply, especially if air is present.

Ewes look dull, show slight paralysis and can circle. If caught early the vet can treat with intra-venous antibiotics but if progressed far, treatment often does not work. Best practice silage making will reduce the risk of disease.





# Health issues causing losses in older lambs

## Coccidiosis

This disease strikes lambs at four to six weeks old and is prevalent in intensive systems. Infection is caused by a small protozoan parasite which invades the intestinal cells of lambs

Mortality can be high and animals that recover are permanently damaged.

Risk factors include the use of nursery paddocks, poor colostrum intake, mixed age groups and high stocking rates.

Risk can be reduced by managing lambs of different ages in separate groups, or introducing a coccidiostat into the creep feed. Discuss targeted drench treatments with the vet.



## Liver fluke

Liver fluke disease is caused by a parasite living in the bile ducts of sheep. Incidence is increasing in the UK due to milder winters and wetter summers which favour populations of the mud-snail – the essential intermediate host of the parasite.

Lambs can become infested on 'flukey farms' during summer and growth rates suffer and they will not finish as quickly as expected. Lambs need to be treated in the autumn. Consult the vet for the best products to use.

Follow SCOPS guidelines to reduce the risk of resistance of liver fluke to wormers.

## Nematodirus

This worm infestation usually affects lambs in spring (April/May), and is worst when warm weather follows a cold snap.

Unlike other worms, nematodirus passes from lamb to lamb. It usually takes a year to complete its lifecycle so risk is highest in pastures that carried lambs the previous spring.

Regional warnings are given by organisations such as the National Animal Diseases Information Service (NADIS) or consult the vet.

DO NOT assume that scouring lambs have worms. Take faecal worm egg counts (FEC) to monitor worm burdens in lambs before treating.

Affected lambs can be treated by drenching with a white (BZ) wormer. Check the efficacy of this treatment by performing a post-drench FEC 14 days later.

## Orf

Orf is a highly contagious skin condition which affects mainly young lambs. The virus causes lesions to develop on their mouths. The lambs normally manage to suckle and recover after a couple of weeks but ewes can suffer if it transfers to their udders. It can affect milk supply and there is a great risk of mastitis.

Ewes and lambs can be vaccinated on farms with a known orf problem – but should not be used on farms that do not have a history of it.



# Lamb losses record sheet

Keep a tally using a sheet like this, wall chart or blackboard to record lamb losses. This will help identify what the diseases/main problems are. Then put management practices in place to prevent further losses now and in the future.

		5	10	15	20
Watery Mouth	X	X			
Stillborn - difficult lambing	X	X	X	X	
Large Lamb					
Small/weak lamb					
Abnormality					
Abortion					
Bad/mis-mothering					
Disease					
Weather					
Starvation					
Predation					
Ewe died					
Hypothermia					
Lamb laid on					

**Cause of loss examples**

- Stillbirth unknown
- Stillbirth difficult lambing
- Large Lamb
- Small/weak lamb
- Abnormality
- Abortion
- Bad/mis-mothering
- Disease
- Weather
- Starvation
- Predation
- Ewe died
- Hypothermia
- Lamb laid on





# Other BRP publications available

## Sheep BRP

- Manual 1 – Marketing Prime Lamb for Better Returns
- Manual 2 – Target Ram Selection for Better Returns
- Manual 3 – Target Lamb Management for Better Returns
- Manual 4 – Target Ewe Management for Better Returns
- Manual 5 – Target Store Lamb Management for Better Returns
- Manual 6 – Target Easier Management for Better Returns
- Manual 7 – Target Lameness for Better Returns
- Manual 8 – Target Worm Control for Better Returns
- Manual 9 – Improving Ewe Breeding for Better Returns
- Manual 10 – Controlling External Parasites for Better Returns
- Manual 11 – Target Ewe Fertility for Better Returns
- Manual 12 – Improving Ewe Nutrition for Better Returns
- Manual 13 – Improving Sheep Handling for Better Returns
- Manual 14 – Reducing Lamb Losses for Better Returns

## Joint Beef and Sheep BRP

- Manual 1 – Improving Pasture for Better Returns
- Manual 2 – Improved Costings for Better Returns
- Manual 3 – Improving Soils for Better Returns
- Manual 4 – Managing Clover for Better Returns
- Manual 5 – Making Grass Silage for Better Returns
- Manual 6 – Using Brassicas for Better Returns
- Manual 7 – Managing Nutrients for Better Returns

## For more information contact:

**Better Returns Programme**  
EBLEX  
Stoneleigh Park  
Kenilworth  
Warwickshire  
CV8 2TL  
Tel: 0870 241 8829  
Fax: 0844 774 6253

**Email: [brp@eblex.ahdb.org.uk](mailto:brp@eblex.ahdb.org.uk)**  
**[www.eblex.org.uk](http://www.eblex.org.uk)**

EBLEX is a division of the Agriculture and Horticulture Development Board (AHDB).

©Agriculture and Horticulture Development Board 2012.  
All rights reserved.

