

## New Inverted Biological Microscope – All Phase Contrast



### Easy to use, Outstanding Views

Designed to plug in and use, this Jenco International Inverted microscope set up and operation is quick and easy.

Begin cell counts or check for viability immediately.

Optimum views, quickly.

**Fixed Stage - flat 9" x 9"**

### Brilliant Phase Contrast, including 5X, 10X and 20X

semi transparent specimens appear in detailed image with sharp contrast.

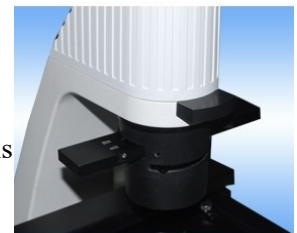
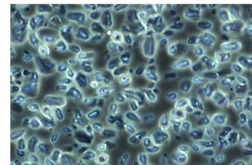
Determine cell types, morphology of Mammalian Cells, Epithelial Cells, Cell counting, Cell Culture, Cell lines



### Comfort, Convenience

10X eye pieces create Large Field, See more specimen:

Φ22mm high eye point, 45° incline Trinocular head – attach camera for Digital imaging,



9 watt LED with dimmer control lasts 10,000 hours. Bright, powerful, this light source is centered and positioned for optimum illumination

Condenser Long working distance: 70mm pre-centered at proper height

Smooth operation, focus/light Controls a natural fit when you sit in front of this instrument

If relocating, use Integrated Handle

### Objective Lens Specifications - Jenco model CP-5S:

Infinity Objectives	Magnification	Numerical Aperture (mm)	Field of View with 10X Eye Piece (mm)	Working Distance Bright Field (mm)
Phase Planachromatic	5X	0.1	1.8	8.1
Phase Planachromatic	10X	0.25	1.8	8.1
Phase Planachromatic	20X	0.4	0.72	4.8

Standard with 10X eye pieces, Φ 22mm. inclined 45°; phase telescoping eyepiece, Infinity Plan objectives below, dust cover, spare fuse, power cord and anti-microbial treatment on frame, head

Power AC 110-220V, 50/60 Hz

Dimensions: LWH (inches/cm) 22 x 8.7 x 20/ 56 x 22 x 51 Weight 25 lbs. 11.4 Kg.