

Woodlawn Memorial Park

11365 Ocean Gateway
Easton, MD 21601
(410) 822-4282

All Inclusive Packages for Woodlawn Memorial Park

Single Interment

\$8,140.00

- Gravesite with Perpetual Care
- Weekday Opening/ Closing
- Admin Fee
- Regular Concrete Graveliner
- Premium Single Bronze Monument

Single Interment

\$6,930.00

- Weekday Opening/ Closing
- Admin Fee
- Regular Concrete Graveliner
- Premium Single Bronze Monument

Garden of Magnolias Package:

- 2 Gravesites with Perpetual Care

\$10,000

- 44 x 14 Premium Companion Monument with Vase

Cremation Burial

\$6,265.00

- Gravesite with Perpetual Care
- Weekday Opening/ Closing
- Admin Fee
- Universal Urn Vault
- Premium Single Bronze Marker

Cremation Burial

\$5,055.00

- Weekday Opening/ Closing
- Admin Fee
- Universal Urn Vault
- Premium Single Bronze Marker

Cremation with

\$1,650.00

Columbarium Placement

- Purchase of Columbarium Niche
 - Prayer 2 or Heaven Level
- Urn for cremated remains
- Standard Bronze Memorial Plaque
- Admin Fee
- Opening and Closing of Niche Space

Cremation with

\$550.00

Columbarium Placement

- Urn for cremated remains
- Standard Bronze Memorial Plaque
- Admin Fee
- Opening and Closing of Niche Space

Green Burial Packages

Green Burial

\$5,255.00

- Gravesite with Perpetual Care
- 1 Weekday Hand dug opening/closing
 - Includes Green Burial Set Up
- Admin Fee
- 1 River rock Marker

Green Cremation Burial

\$4,255.00

- Gravesite with Perpetual Care for 2 sets of cremated remains
- 1 Weekday Hand Dug opening/closing
 - Includes Green Burial Set Up
- Admin Fee
- 1 River rock Marker

Effective March 1, 2024

Woodlawn Memorial Park General Price List

Land Charges

*Does Not Include Perpetual Care Fee

Single Gravesite	\$1,100	_____
Columbarium Niche – Includes Urn and Bronze Plaque	Starting at \$1,250	_____
Green Burial Gravesite	\$1,600	_____
Upright Monument Garden	\$1,600	_____
Second Right of Interment	\$ 600	_____
Easements (Bench Rights)	\$ 800	_____

Interment/Entombment Service Fees (opening/ closing)

Adult Interment Fee (weekdays 9am-3:00pm) *	\$1,720	_____
Entombment Fee (weekdays 9am-3:00pm) *	\$2,150	_____
Infant/Child Fee (weekdays 9am-3:00pm)	\$ 400	_____
Extra Depth Fee (double depth) – in addition to interment fee ~Where offered~	\$ 650	_____
Hand dug opening/ closing for Green Burial (casket)	\$2,995	_____
Hand dug opening/ closing for Green Burial (cremation)	\$2,195	_____
Professional Funeral / Service Oversight	\$ 500	_____
Professional staff to assist with services when no funeral home is present.		
Staff to assist with directing traffic, parking vehicles, greeting guests, opening and closing services, etc.		

Outer Burial Containers

Concrete Graveliner	\$1,375	_____
Burial Vaults	Starting at \$1,895	_____

Disinterment Fees (Weekdays Only)

Service Charge	Pricing Available Upon Request	_____
----------------	--------------------------------	-------

Cremation Inurnment Fees

Niche Opening and Closing (weekdays)	\$ 450	_____
Ground Inurnment Fee (weekdays before 3pm) *	\$1,280	_____

Options for Cremated Human Remains

Urn Vault Combo (Marbelon/McKenzie Style)	\$ 450	_____
Universal Urn Vault	\$ 550	_____
Executive Urn Vault	\$ 600	_____
Benches	Pricing available upon request	_____

*Full Set-up Included: Tent, Chairs, Greens, Lowering Device/Urn Table

Effective March 1, 2024

Woodlawn Memorial Park General Price List

After Hours Service Fees (additional)

After 3:00pm any day per 1 hour	\$ 150/hr.	_____
Saturday Fees (9am-3:00pm)	\$ 425	_____
Sunday Fee (9am-3:00pm Only)	\$ 600	_____
Holiday Fee (9am-3:00pm Only)	\$ 700	_____

These fees do not include Vault Company Overtime Charges

Memorial *Not including tax

Pricing Includes required Endowment Guarantee, Staking, Installation & Admin Fees

Bronze Memorials	Starting at \$3,250	_____
Foundation for Upright Granite Section	\$ 200 - \$600 (dependent on size)	_____
Temporary Grave Marker	\$ 25	_____
Staking and Marking of Memorial	\$ 150	_____
Installation Fee	\$ 150	_____
Triscroll (Date Only)	\$ 360	_____
Full Scroll (Name and Dates)	\$ 630	_____
Vase	Starting at \$ 650	_____
6" Granite Corner Marker with 2 ¾" bronze top (set of 4)	\$1,950	_____
Columbarium Niche – Signature Plaque with Portrait	\$ 750	_____
Columbarium Niche – Vase	\$ 650	_____
Mausoleum Lettering	Pricing available upon request	_____
Holiday Wreath Program	\$ 49.99 - \$ 69.99	_____
Endowment Guarantee	\$ 850	_____

Funds set aside to cover the upkeep and care of the ground around the memorial – property owned by a family on cemetery land. This includes upkeep and care of the ground around the memorial for settling, dipping, et. The Endowment Guarantee does not pertain to care for the memorial itself

Miscellaneous Fees

Replacement / Care Plan	\$ 600	_____
Admin Fee on all Contracts over \$250	\$ 125	_____
*Includes Required MD State Office of Cemetery Oversight Fee of \$15		
Returned Check Fee	\$ 75	_____
Deed Transfer	\$ 150	_____
Perpetual Care Fee	10% Land Charges	_____

Payment Policy-

Payment must be made in FULL at least 1 business day prior to burial. Payment may be made by cash, check, or credit card.

** Cemetery will require the installation of an outer burial container for the casket to preserve the stability of the ground and grave site which does not have pre-installed lawn crypts, in all sections with the exception of the Green Burial Section**

** Cemetery will require the use of an urn vault, marble urn vault combo, or other nonbiodegradable, non-crushable urn to preserve the stability of the ground in all sections with the exception of the Green Burial Section** ** These items are available for purchase in advance or when the space is used. **

Effective March 1, 2024

Monuments

Pricing Effective: March 1, 2024

Individual Markers

Minimal Single Marker - *\$3,250*

- 20"x10" Bronze
- 24"x14" Standard Granite
- No Flower Vase
- Year of Birth and Death ONLY

Standard Single Marker - *\$3,995*

- 24"x14" Bronze
- 28"x18" Standard Granite
- Choice of Frame
- Up to 6 words
- Up to 2 emblems
- No Flower Vase

Premium Single Marker - *\$4,995*

- 24"x14" Bronze
- 28"x18" Standard Granite
- Choice of Frame
- Up to 6 words
- Up to 2 emblems
- Flower Vase

Companion Markers

Standard Companion Marker - *\$5,835*

- 36"x13" Bronze
- 40"x17" Standard Granite
- Choice of Frame
- Up to 6 words
- Up to 4 emblems
- No Flower Vase

Premium Companion Marker - *\$6,850*

- 36"x13" Bronze
- 40"x17" Standard Granite
- Choice of Frame
- Up to 6 words
- Up to 4 emblems
- Flower Vase

Garden of Magnolia Package - *\$10,000*

Two grave spaces, perpetual care and monument

- 44"x14" Bronze on 48"x18" Standard Granite
- Choice of Frame
- Up to 6 words and up to 4 emblems
- Flower Vase Included

Ledger Markers

Standard Double Marker – *\$5,895*

- 16"x24" Bronze
- 20"x28" Standard Granite
- Choice of Frame
- Up to 4 words
- Up to 2 emblems
- Flower Vase

Premium Double Marker – Starting at *\$4,495*

- Up to 2 - 24"x12" Bronze Markers
- 28"x38" Standard Granite
- Choice of Frames
- Up to 6 words per bronze marker
- Up to 2 emblems per bronze marker
- Choice of Flower Vase

3rd Party Memorial Policy –

Woodlawn Memorial Park requires approval by Management of all memorials ordered from outside vendors prior to placement. All fees MUST be paid prior to the installation of all memorial markers.

Delivery Policy –

A written notice of intent to deliver must be provided at least 1 FULL business day prior to delivery.

Does not include tax

Effective March 1, 2024

Monuments

Minimal Single Marker



Standard Double Marker



Premium Single Marker

(Picture shows vase in the stored position)



Premium Double Marker



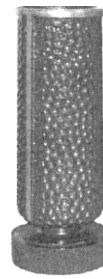
Companion Marker



Vase Options and Accessories



Patrician Vase
10" x 4"
Standard Colors
\$650



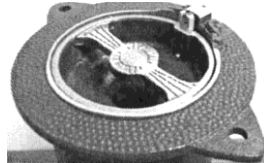
Garden Vase
11" x 4"
Standard Colors
\$650

Vase Options – NOT included in vase price

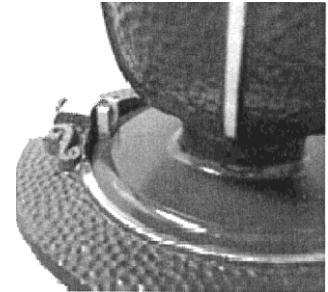
- \$65 Cross on Vase (Not available with threaded plug.)
- \$75 Threaded Vase Plug (To modify vase to hold water for live flowers.)
- Add Vase Guard** to Assembled Memorial - to deter theft. (See images.)**



Vase Base



Inverted Vase, in Ring



**A vase guard can be added to most memorials and any 6" vase ring.

6" Vase Rings - Attached with cinch anchors and screws. Top mounted - Fits 5 1/4" core hole.

\$375



6" Plain



6" Together Forever



6" In Loving Memory



6" Military

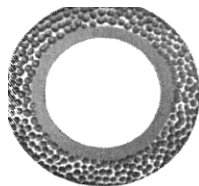
7" Vase Rings - includes ring, bolts, retention ring and nuts. Bottom mounted - Fits 6" core hole.

(Not available with a vase guard.)

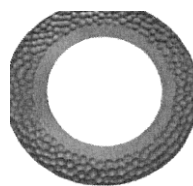
\$405



7" Star



7" Polished Pebble



7" Plain Pebble

8 1/4" Remembrance Ring

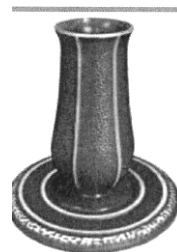
\$495



Includes ring, bolts, retention ring and nuts.
Bottom mounted - Fits 6" core hole.

(Not available with a vase guard.)

Includes up to four words in 1/2" lettersize. Flat



\$155 **Add inscription** - only available on 6" Plain vase ring. (up to four words) Add per additional word. \$20.00

Effective March 1, 2024

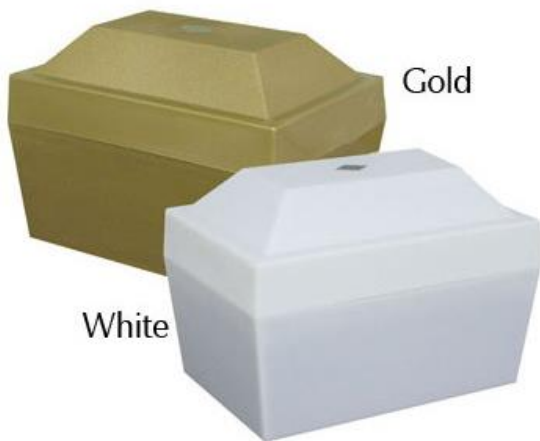
Urn Vault Options

Marble Urn Vault Combo: \$450.00

(Engraving Available for additional fee)



Universal Urn Vault: \$550



Interior Dimensions: 12.7" x 8.5" x 9.6"
Exterior Dimensions: 14.5" x 10" x 10"

Executive Urn Vault: \$600

Cultured Marble



Interior Dimensions: 9.25" x 8" x 12.25"
Exterior Dimensions: 12.5" x 11" x 15.5"

Outer Burial Containers

Pricing Effective: March 1, 2024



GRAVELINER

DESCRIPTION

Unpainted, Unsealed and unlined Concrete Burial Vault

I.D.: 30"W x 25.25"H x 86"L

O.D.: 34"W x 33"H x 90"L

Name Plate Included: No

Vinyl or Applique Included: No

\$1,375.00



TITAN

DESCRIPTION

Painted, Sealed and Polymer Lined Concrete Burial Vault

I.D.: 30"W x 23.75"H x 86"L

O.D.: 34.75"W x 33.75"H x 90.5"L

Name Plate Included: Yes

Vinyl or Applique Included: No

\$1,895.00



TIARA

DESCRIPTION

Painted, Sealed and Polymer Lined Concrete Burial Vault

I.D.: 30"W x 23.75"H x 86"L

O.D.: 34.75"W x 33.75"H x 90.5"L

Name Plate Included: Yes

Vinyl or Applique Included: No

\$2,065.00

Outer Burial Containers

Pricing Effective: March 1, 2024



PATRICIAN

DESCRIPTION

\$2,635.00

Painted, Sealed, Lined and ABS encased with Decorative Handles

Available in White Marble, Black Marble and Pink Marble

Available with raised Rose emblem or smooth carapace

I.D.: 30"W x 23.75"H x 86"L

O.D.: 34.75"W x 33.75"H x 90.5"L

Name Plate Included: No

Vinyl or Applique Included: Yes



HEALING TREE

DESCRIPTION

\$3,525.00

Simulated White Marble with Healing Tree Carapace and 20 Memory Rings Polymer encased

I.D.: 30"W x 25.5"H x 86"L

O.D.: 34"W x 34"H x 90"L

Name Plate Included: No

Vinyl or Applique Included: Vinyl and 20 Healing Tree Coins



ATHENIAN

DESCRIPTION

\$4,475.00

Painted, Stainless Steel Lined and Carapace

I.D.: 30"W x 23.75"H x 86"L

O.D.: 34.75"W x 33.75"H x 90.5"L

Name Plate Included: No

Vinyl or Applique Included: Yes