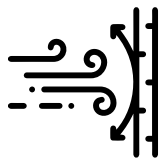


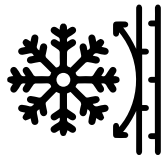
Pictured:
8'x10' Container w/ double door option and
RAL 1003 Signal Yellow powder coat paint.

AVAILABLE SIZES: 8'X7' | 8'X10' | 8'X13' | 8'X16' | 8'X20'

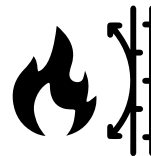
- A** EZ Double Door Handle
- B** Quality Hinges
- C** 2 High-Tech Locks
- D** Fork lift Pockets
- E** Built-in Rain Gutters



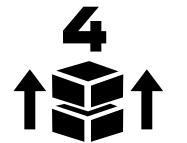
140 MPH WIND RATING



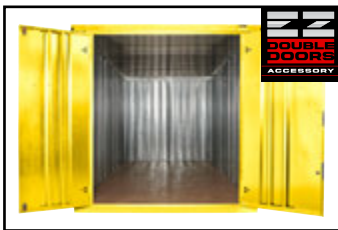
135 LBS. SQ. FT.
SNOW LOAD RATING



1.5 HOUR FIRE RATING



MAX STACK
STACK UP TO 4 HIGH



DOUBLE DOOR

69" width



EZ SHELVES

Steel Shelves easily install



EZ RAMPS

Steel Entry Ramps



EZ LINKS

Link side to side



59 Beta Shoe Factory Acc Rd.
Beverly, WV | 26253 | US



info@armorclad.com



1-304-969-1700 Corp. Office

ARMORCLAD.COM



**CUSTOMIZE
YOUR NEEDS**

ARMORCLAD
STORE. MOVE. PROTECT.

Specifications		CP87	CP810	CP813	CP816	CP820
Exterior	Length (in.)	90.2	117	153	192.2	231.5
	Width (in.)	90.3	90.3	90.3	90.3	90.3
	Height (in.)	87.8	87.8	87.8	87.8	87.8
Interior	Length (in.)	83.9	111.7	146.7	185.9	225.2
	Width (in.)	83.5	83.5	83.5	83.5	83.5
	Height (in.)	81.7	81.7	81.7	81.7	81.7
	Sq. (ft.)	49	65	85	108	131
	Cu. (ft.)	331	441	579	734	889
Doorway	Height (in.)	74	74	74	74	74
	Width (in.)	49 or 69	49 or 69	49 or 69	49 or 69	49 or 69
Component Weight	Roof (lbs.)	92	208	295	393	460
	Long Wall x2 (lbs.)	91	126	164	208	250
	End Wall (lbs.)	78	78	78	78	78
	Door Wall (lbs.)	171	171	171	171	171
	Base (lbs.)	233	299	349	555	723
	Total Weight* (lbs.)	756	1008	1221	1613	1932
Floor	Type	OSB/PLY or Custom	OSB/PLY or Custom	OSB/PLY or Custom	OSB/PLY or Custom	OSB/PLY or Custom
Walls/Roof	Galvanized Steel (ga.)	20	20	20	20	20

* Dimensions are based on general manufacturing estimates.



STORE. MOVE. PROTECT.

- Custom colors available
- Temporary or permanent construction
- Stacks up to 4 high
- EZ Accessory compatible
- Fully modular
- Make any length you want with EZ-End Link Kits
- Widths up to 14' with EZ-Side Link Kits



Custom Designs



IMPRINT AREA