

ARMORCLAD

STORE. MOVE. PROTECT.

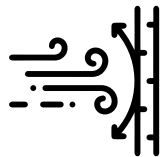
**PRO
SERIES
INSULATED
CABIN**



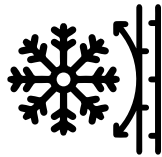
Pictured:
8'x7' Cabin with glazed u-PVC windows
RAL 3020 Traffic Red powder coat paint.

AVAILABLE SIZES: 8'X 7' | 8'X 10' | 8'X 13 | 8'X 16' | 8'X 20'

- A** EZ Entry Door Handle
- B** Quality Hinges
- C** Built-in Rain Gutters
- D** Double Insulated Windows
- E** Fork lift Pockets



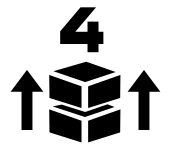
140 MPH WIND RATING



135 LBS.SQ.FT.
SNOW LOAD RATING



1.5 HOUR FIRE RATING

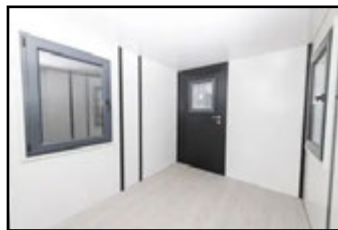


4
MAX STACK
STACK UP TO 4 HIGH



WINDOW OPTIONS

Different window styles



WIDE SPACE

Top-quality finishings



EZ RAMPS

Steel Entry Ramps



EZ HANDLE

Hi-Tech Lock System



59 Beta Shoe Factory Acc Rd.
Beverly, WV | 26253 | US



info@armorclad.com



1-304-969-1700 Corp. Office

ARMORCLAD.COM



**CUSTOMIZE
YOUR NEEDS**

ARMORCLAD
STORE. MOVE. PROTECT.

Specifications		ICP87	ICP810	ICP813	ICP816	ICP820
Exterior	Length (in.)	90.2	117	153	192.2	231.5
	Width (in.)	90.3	90.3	90.3	90.3	90.3
	Height (in.)	87.8	87.8	87.8	87.8	87.8
Interior	Length (in.)	82.2	109	145	184.2	223.5
	Width (in.)	82.8	82.8	82.8	82.8	82.8
	Height (in.)	87.8	87.8	87.8	87.8	87.8
	Sq. (ft.)	47	63	83	106	129
	Cu. (ft.)	346	459	610	775	940
Doorway	Height (in.)	76	76	76	76	76
	Width (in.)	33.5	33.5	33.5	33.5	33.5
Window x2	Height (in.)	44.7	44.7	44.7	44.7	44.7
	Width (in.)	32.3	32.3	32.3	32.3	32.3
Component Weight	Roof (lbs.)	171	350	487	603	733
	Long Wall x2 (lbs.)	171	212	272	320	399
	End Wall (lbs.)	130	130	130	130	130
	Door Wall (lbs.)	266	266	266	266	266
	Base (lbs.)	490	502	575	850	1152
	Total Weight* (lbs.)	1399	1672	2002	2489	3079
Floor	Type	Marine Plywood Vinyl or Custom	Marine Plywood Vinyl or Custom	Marine Plywood Vinyl or Custom	Marine Plywood Vinyl or Custom	Marine Plywood Vinyl or Custom
Walls/Roof	Galvanized Steel (ga.)	20	20	20	20	20
Insulation	R-Factor	12	12	12	12	12

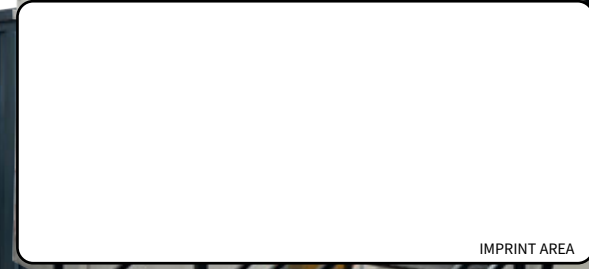
* Dimensions are based on general manufacturing estimates.

STORE. MOVE. PROTECT.

- Factory Insulated
- Premium Powder coat paint optional
- Stackable and linkable design
- Windows Easily Added
- 4 Point Lift
- Forklift Pockets
- Fully modular
- Weathertight
- Safe & Secure



Custom Designs



IMPRINT AREA